



# Cisco 2.4/5/6 GHz Tri-Band Omnidirectional Antenna (IW-ANT-OMV-2567-N)

---

This chapter contains the following sections:

- [Overview, on page 1](#)
- [Specifications, on page 3](#)
- [Radiation Patterns, on page 4](#)

## Overview

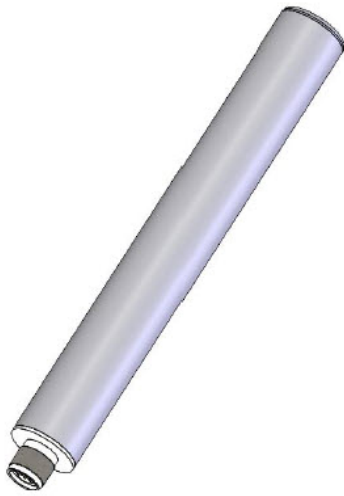
The Cisco 2.4/5/6 GHz Tri-Band Omnidirectional Antenna (IW-ANT-OMV-2567-N), is especially designed to complement interior or exterior mounted wireless network systems.

The integrated male N(m) connector is embedded in the antenna base cap for direct mounting to the chosen AP. The ingress protection rating of this antenna element permits either upright or inverted orientation in outdoor locations. The antenna may also be pole-mounted when separation from the AP is required for optimum positioning.

The IW-ANT-OMV-2567-N is a self-identifying antenna having circuitry that enables supported Cisco access points (APs) to self-identify the antenna. This antenna has a built-in EEPROM that the APs read to automatically configure the antenna type and the gain in the wireless controller.

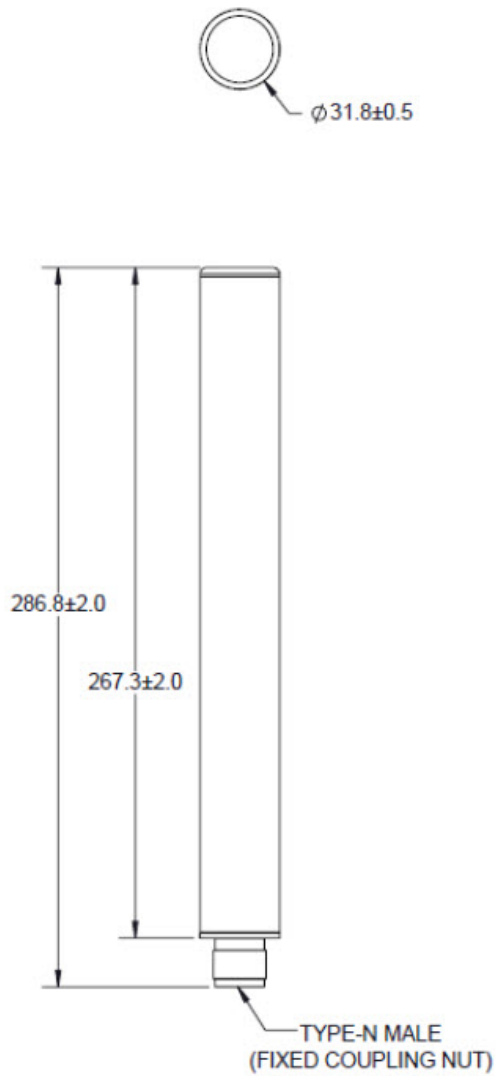
The following figure shows the IW-ANT-OMV-2567-N:

*Figure 1: IW-ANT-OMV-2567-N*



The following figure shows the mechanical diagram and mounting instructions:

Figure 2: IW-ANT-OMV-2567-N Mechanical Diagram



## Specifications

This section provides tables that show the antenna specifications.

**Table 1: Mechanical Specifications**

Cisco PID	IW-ANT-OMV-2567-N
Characteristic Impedance	50 Ohm
Antenna Type	Dipole

Polarization	Linear, Vertical
Maximum Input Power	2 W
Operational Temperature	-40 to +70 °C
Storage Temperature	-40 to +85 °C
Ingression Protection	IP67
Weight	137g (0.3 lb)
Wind Loading, (survival)	165 mph

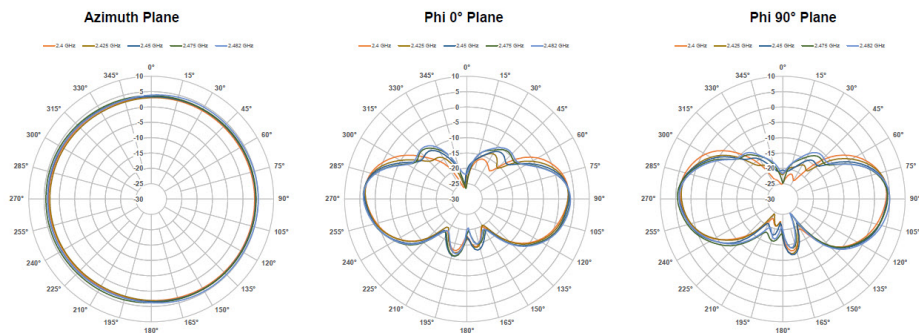
**Table 2: Electrical Specifications**

Operating Frequency	2400-2484 MHz	4900-4990 MHz	5170-5330 MHz	5490-6875 MHz
VSWR, Max	2.5:1	2.2:1	2.0:1	2.0:1
Peak Gain, Max	4 dBi	7 dBi	7 dBi	7 dBi
Average Gain, Near Horizon	3.5+/-0.5 dBi	5.0+/-1.0 dBi	4.0+/-1.0 dBi	5.5+/-1.0 dBi
Elevation Plane 3 dB Beamwidth	37°	23°	22°	20°
Azimuth Plane 3 dB Beamwidth	Omni-directional			

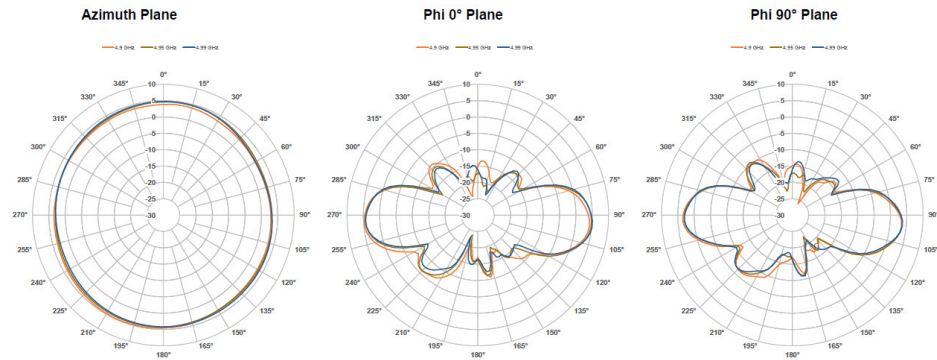
## Radiation Patterns

This section shows the various radiation patterns for the antenna at different frequencies.

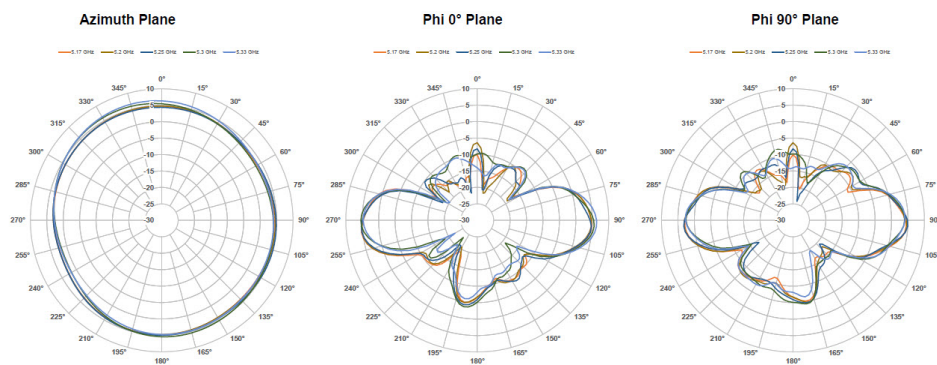
### 2400-2484 MHz



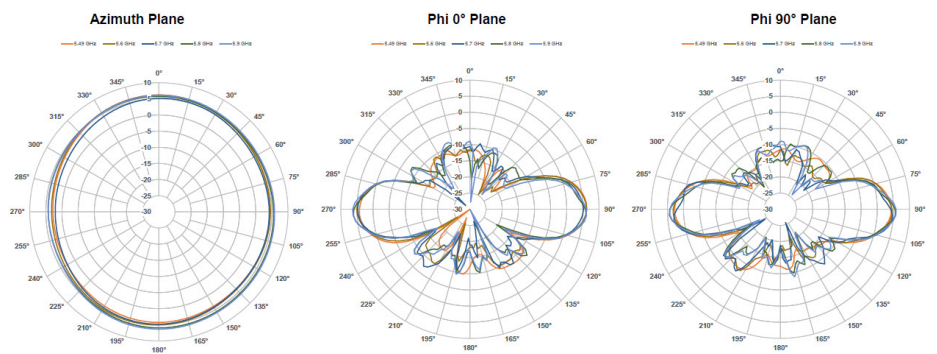
**4900-4990 MHz**



**5170-5330 MHz**



**5490-5900 MHz**



Radiation Patterns