

# Determine the Amount of Physical Memory on a Microsoft Windows NT/2000 Workstation

Document ID: 20480

## Contents

### Introduction

#### Prerequisites

Requirements

Components Used

Conventions

#### Microsoft Windows NT

#### Microsoft Windows 2000

#### Related Information

## Introduction

This document describes how to run Microsoft WinMSD in order to determine the amount of physical memory on a Windows NT/2000 workstation. WinMSD is a utility used to gather detailed configuration information about computers that run Microsoft Windows NT/2000.

## Prerequisites

### Requirements

Cisco recommends that you have knowledge of these topics:

- Microsoft Windows NT Server 4.0
- Microsoft Windows 2000

### Components Used

The information in this document is based on these software and hardware versions:

- Microsoft Windows NT Server 4.0
- Microsoft Windows 2000

The information in this document was created from the devices in a specific lab environment. All of the devices used in this document started with a cleared (default) configuration. If your network is live, make sure that you understand the potential impact of any command.

### Conventions

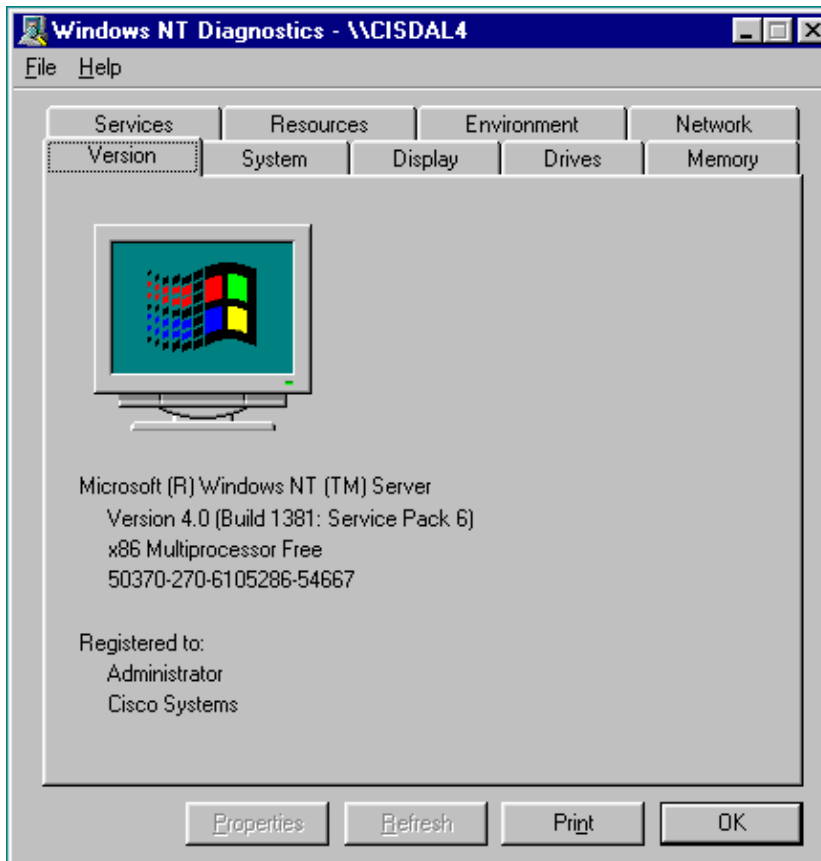
Refer to Cisco Technical Tips Conventions for more information on document conventions.

## Microsoft Windows NT

Follow this step-by-step procedure to determine the amount of physical memory installed on an individual Cisco Intelligent Contact Management (ICM) node in a Windows NT environment:

1. In a command window or from the **Run** dialog box, type **winmsd**.
2. Press **Enter**. Windows NT Diagnostics window opens, as shown in Figure 1.

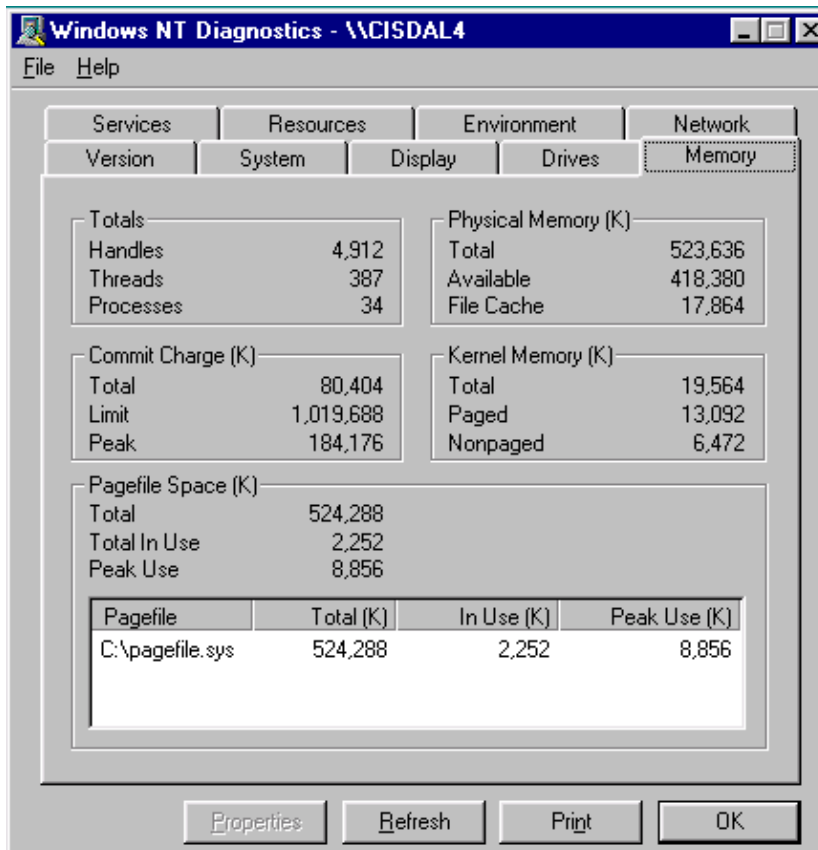
**Figure 1 Windows NT Diagnostics**



3. Click the **Memory** tab, refer to Figure 2, that provides you with all pertinent information regarding memory. This example shows the physical memory allocation is as follows:

- ◆ Total Physical Memory: 523,636 KB
- ◆ Available Physical Memory: 418,380 KB

**Figure 2 Windows NT Memory Information**

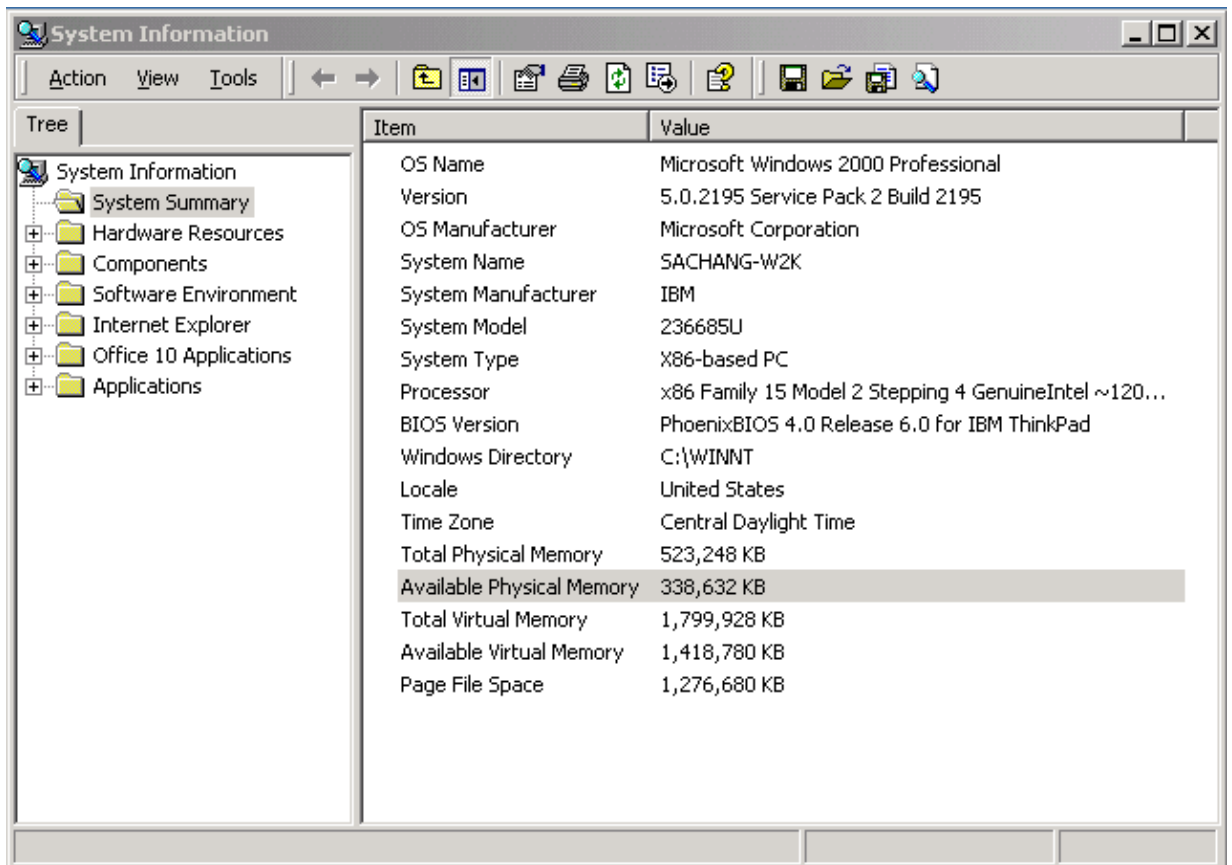


## Microsoft Windows 2000

This step-by-step procedure helps you determine the amount of physical memory installed on an individual Cisco ICM node in a Windows 2000 environment:

1. In a command window or from the **Run** dialog box, type **winmsd**.
2. Press **Enter**, the System Information window opens, Figure 3. The physical memory allocation is:
  - ◆ Total Physical Memory: 523,248 KB
  - ◆ Available Physical Memory: 338,632 KB

**Figure 3 System Information Window**



## Related Information

- [Technical Support & Documentation – Cisco Systems](#)

---

[Contacts & Feedback](#) | [Help](#) | [Site Map](#)

© 2014 – 2015 Cisco Systems, Inc. All rights reserved. [Terms & Conditions](#) | [Privacy Statement](#) | [Cookie Policy](#) | [Trademarks of Cisco Systems, Inc.](#)

---

Updated: Jul 22, 2005

Document ID: 20480

---