



# CHAPTER 17

## LDAP Directory Integration

---

**Last revised on: September 18, 2009**

Directories are specialized databases that are optimized for a high number of reads and searches, and occasional writes and updates. Directories typically store data that does not change often, such as employee information, user policies, user privileges, and group membership on the corporate network.

Directories are extensible, meaning that the type of information stored can be modified and extended. The term *directory schema* defines the type of information stored, its container (or attribute), and its relationship to users and resources.

The Lightweight Directory Access Protocol (LDAP) provides applications with a standard method for accessing and potentially modifying the information stored in the directory. This capability enables companies to centralize all user information in a single repository available to several applications, with a remarkable reduction in maintenance costs through the ease of adds, moves, and changes.

This chapter covers the main design principles for integrating a Cisco Unified Communications system based on Cisco Unified Communications Manager (Unified CM) with a corporate LDAP directory. The main topics include:

- [What is Directory Integration?, page 17-2](#)

This section analyzes the various requirements for integration with a corporate LDAP directory in a typical enterprise IT organization.

- [Directory Access for IP Telephony Endpoints, page 17-3](#)

This section describes the technical solution to enable directory access for Cisco Unified Communications endpoints and provides design best-practices around it.

- [Directory Integration with Unified CM, page 17-5](#)

This section describes the technical solutions and provides design best-practices for directory integration with Cisco Unified CM, including the LDAP synchronization and LDAP authentication functions.

The considerations presented in this chapter apply to Cisco Unified CM as well as the following applications bundled with it: Cisco Extension Mobility, Cisco Unified Communications Manager Assistant, WebDialer, Bulk Administration Tool, and Real-Time Monitoring Tool.

For Cisco Unity, refer to the *Cisco Unity Design Guide* and to the following white papers: *Cisco Unity Data and the Directory*, *Active Directory Capacity Planning*, and *Cisco Unity Data Architecture and How Cisco Unity Works*, also available at

<http://www.cisco.com>

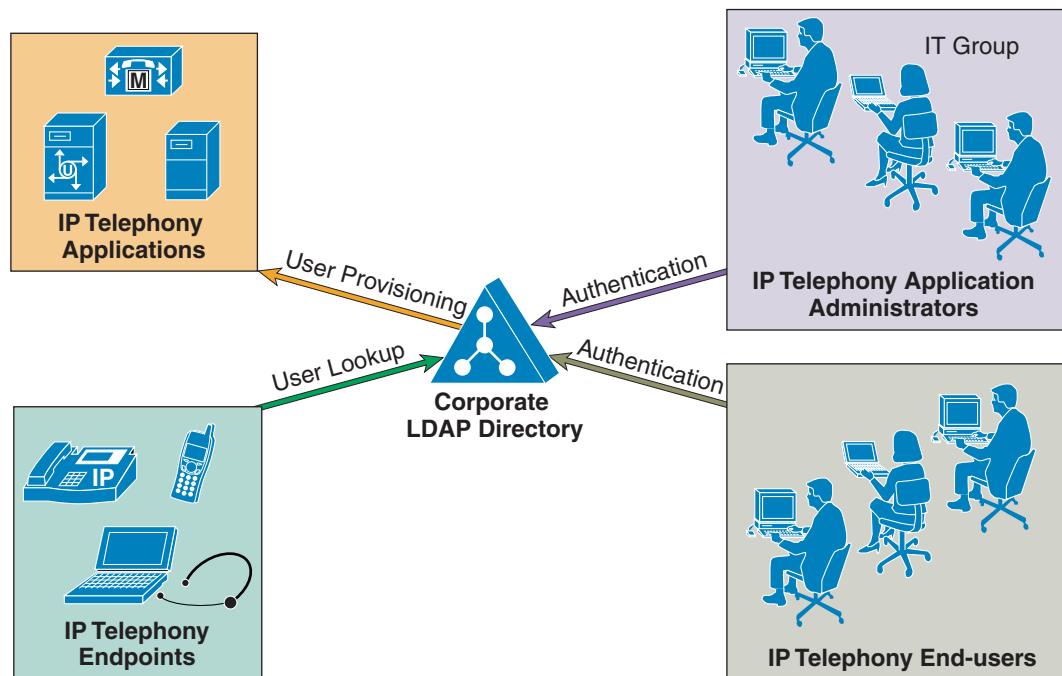
## What's New in This Chapter

Many sections of this chapter were reorganized or rewritten to improve clarity, and some new information was added. Cisco recommends reading this entire chapter before attempting to integrate an LDAP directory with your Cisco Unified Communications system.

## What is Directory Integration?

Integrating voice applications with a corporate LDAP directory is a common task for many enterprise IT organizations. However, the exact scope of the integration varies from company to company, and can translate into one or more specific and independent requirements, as shown in [Figure 17-1](#).

**Figure 17-1** Various Requirements for Directory Integration



One common requirement is to enable user lookups (sometimes called the "white pages" service) from IP phones or other voice and/or video endpoints, so that users can dial contacts quickly after looking up their numbers in the directory.

Another requirement is to provision users automatically from the corporate directory into the user database of voice and/or video applications. This method avoids having to add, remove, or modify core user information manually each time a change occurs in the corporate directory.

Authentication of end-users and administrators of the voice and/or video applications using their corporate directory credentials is also a common requirement. Enabling directory authentication allows the IT department to deliver single log-on functionality while reducing the number of passwords each user needs to maintain across different corporate applications.

As shown in [Table 17-1](#), within the context of a Cisco Unified Communications system, the term *directory access* refers to mechanisms and solutions that satisfy the requirement of user lookups for IP Telephony endpoints, while the term *directory integration* refers to mechanisms and solutions that satisfy the requirements of user provisioning and authentication (for both end users and administrators).

**Table 17-1** *Directory Requirements and Cisco Solutions*

Requirement	Cisco Solution	Cisco Unified CM Feature
User lookup for endpoints	Directory access	Cisco Unified IP Phone Services SDK
User provisioning	Directory integration	LDAP Synchronization
Authentication for IP Telephony end users	Directory integration	LDAP Authentication
Authentication for IP Telephony application administrators	Directory integration	LDAP Authentication

The remainder of this chapter describes how to address these requirements in a Cisco Unified Communications system based on Cisco Unified CM.



**Note**

Another interpretation of the term *directory integration* revolves around the ability to add application servers to a Microsoft Active Directory domain in order to centralize management and security policies. Cisco Unified CM is an appliance that runs on a customized embedded operating system, and it cannot be added to a Microsoft Active Directory domain. Server management for Unified CM is provided through the Cisco Real Time Monitoring Tool (RTMT). Strong security policies tailored to the application are already implemented within the embedded operating system.

## Directory Access for IP Telephony Endpoints

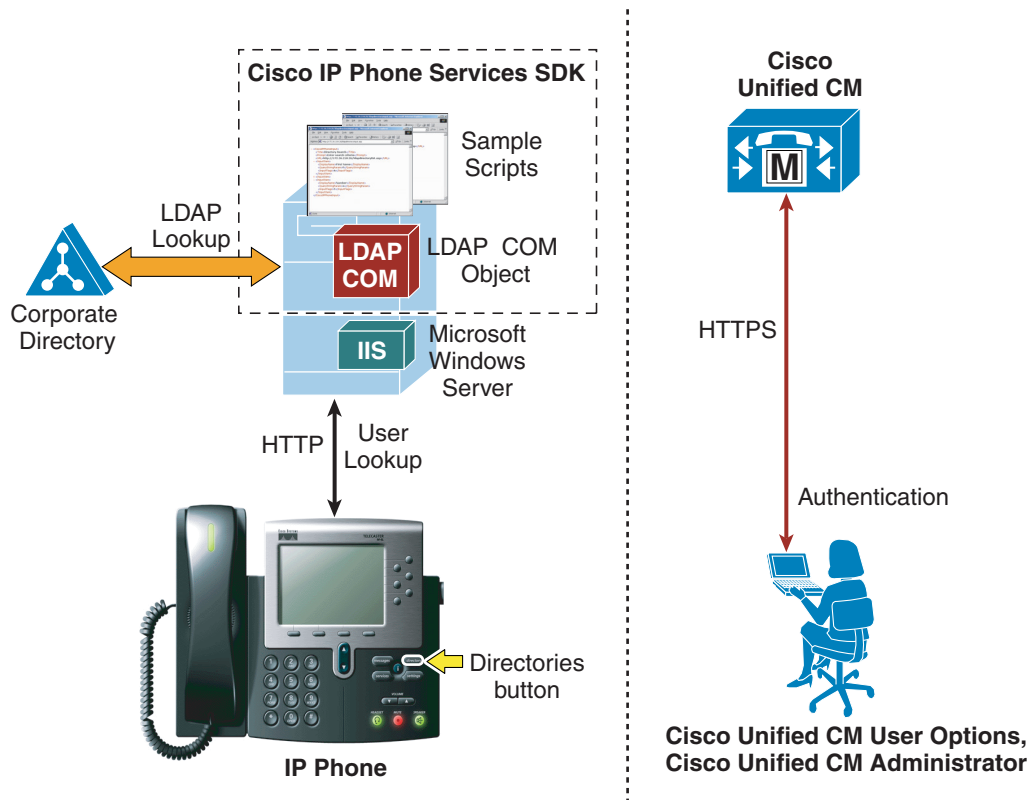
This section describes how to configure corporate directory access to any LDAP-compliant directory server to perform user lookups from Cisco Unified Communications endpoints (such as Cisco Unified IP Phones). The guidelines contained in this section apply regardless of whether Unified CM or other IP Telephony applications have been integrated with a corporate directory for user provisioning and authentication.

Cisco Unified IP Phones equipped with a display screen can search a user directory when a user presses the Directories button on the phone. The IP Phones use Hyper-Text Transfer Protocol (HTTP) to send requests to a web server. The responses from the web server contain specific Extensible Markup Language (XML) objects that the phone interprets and displays.

By default, Cisco Unified IP Phones are configured to perform user lookups against Unified CM's embedded database. However, it is possible to change this configuration so that the lookup is performed on a corporate LDAP directory. In this case, the phones send an HTTP request to an external web server that operates as a proxy by translating the request into an LDAP query which is then processed by the corporate directory. The web server encapsulates the LDAP response into an XML object that is sent back to the phone using HTTP, to be rendered to the end user.

[Figure 17-2](#) illustrates this mechanism in a deployment where Unified CM has not been integrated with the corporate directory. Note that, in this scenario, Unified CM is not involved in the message exchange. The authentication mechanism to Unified CM web pages, shown on the right half of [Figure 17-2](#), is independent of how directory lookup is configured.

**Figure 17-2** Directory Access for Cisco Unified IP Phones Using the Cisco Unified IP Phone Services SDK



In the example shown in [Figure 17-2](#), the web server proxy function is provided by the Cisco LDAP Search Component Object Model (COM) server, which is included in the Cisco Unified IP Phone Services Software Development Kit (SDK) version 3.3(4) or later. You can download the latest Cisco Unified IP Phone Services SDK from the Cisco Developer Community at

<http://developer.cisco.com/web/ipps/home>

The IP Phone Services SDK can be installed on a Microsoft Windows web server running IIS 4.0 or later, but it cannot be installed on a Unified CM server. The SDK includes some sample scripts to provide simple directory lookup functionality.

To set up a corporate directory lookup service using the IP Phone Services SDK, perform the following steps:

- 
- Step 1** Modify one of the sample scripts to point to your corporate LDAP directory, or write your own script using the LDAP Search COM Programming Guide provided with the SDK.
  - Step 2** In Unified CM, configure the URL Directories parameter (under **System > Enterprise Parameters**) to point to the URL of the script on the external web server.
  - Step 3** Reset the phones to make the changes take effect.
-

**Note**

If you want to offer the service only to a subset of users, configure the URL Directories parameter directly within the Phone Configuration page instead of the Enterprise Parameters page.

In conclusion, the following design considerations apply to directory access with the Cisco Unified IP Phone Services SDK:

- User lookups are supported against any LDAP-compliant corporate directory.
- When querying Microsoft Active Directory, you can perform lookups against the Global Catalog by pointing the script to a Global Catalog server and specifying port 3268 in the script configuration. This method typically results in faster lookups. Note that a Global Catalog does not contain a complete set of attributes for users. Refer to Microsoft Active Directory documentation for details.
- There is no impact on Unified CM when this functionality is enabled, and only minimal impact on the LDAP directory server.
- The sample scripts provided with the SDK allow only a minimal amount of customization (for example, you can prefix a digit string to all returned numbers). For a higher degree of manipulation, you will have to develop custom scripts, and a programming guide is included with the SDK to aid in writing the scripts.
- This functionality does not entail provisioning or authentication of Unified CM users with the corporate directory.

## Directory Integration with Unified CM

This section describes the mechanisms and best practices for directory integration with Cisco Unified CM to allow for user provisioning and authentication with a corporate LDAP directory. This section covers the following topics:

- [Cisco Unified Communications Directory Architecture, page 17-6](#)

This section provides an overview of the user-related architecture in Unified CM 7.x.

- [LDAP Synchronization, page 17-9](#)

This section describes the functionality of LDAP synchronization and provides design guidelines for its deployment, with additional considerations for Microsoft Active Directory.

- [LDAP Authentication, page 17-17](#)

This section describes the functionality of LDAP authentication and provides design guidelines for its deployment, with additional considerations for Microsoft Active Directory.

[Table 17-2](#) specifies the currently supported LDAP directories for both synchronization and authentication on Cisco Unified Communication Manager.

**Table 17-2** LDAP Directory Support

LDAP Directory Type	Cisco Unified CM 5.x	Cisco Unified CM 6.x	Cisco Unified CM 7.x
Microsoft AD 2000	Yes	Yes	Yes
Microsoft AD 2003			Cisco Unified CM 7.1(3) or later release is required for Microsoft ADAM and LDS.
Microsoft AD 2008			
Microsoft ADAM 2003			
Microsoft LDS 2008			

**Table 17-2** LDAP Directory Support (continued)

LDAP Directory Type	Cisco Unified CM 5.x	Cisco Unified CM 6.x	Cisco Unified CM 7.x
Netscape 4.x	Yes	Yes	No longer supported <sup>1</sup>
iPlanet 5.0	Yes	Yes	No longer supported <sup>1</sup>
iPlanet 5.1	Yes	Yes	Yes
SunOne 5.2			
SunOne 6.x	No	Yes	Yes
OpenLDAP 2.3.39	No	No	Yes <sup>2</sup>
OpenLDAP 2.4			

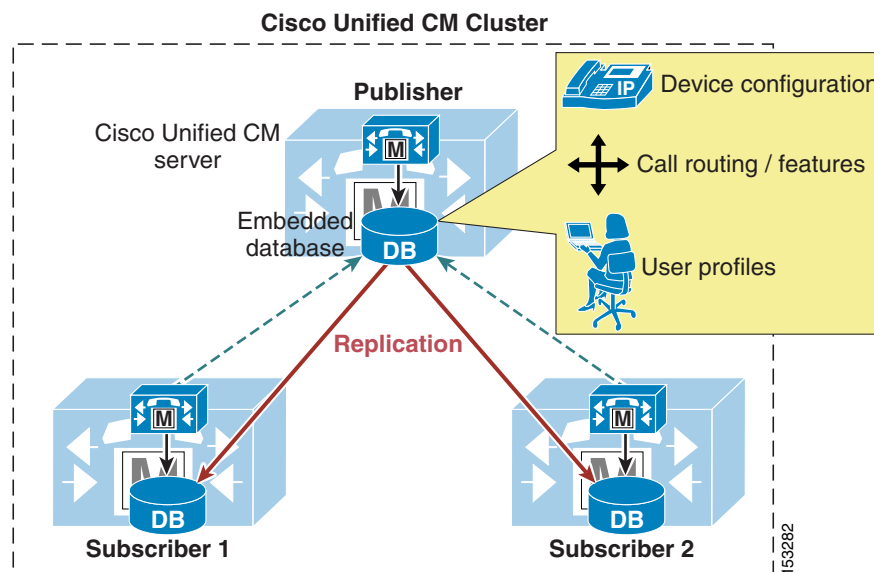
1. The directory vendor indicates that this solution has reached End of Life.
2. This directory type is supported only with Cisco Unified CM 7.1(2) and later releases.

**Note**

All Microsoft Directory products listed in [Table 17-2](#) have equivalent support by Cisco Unified CM. All references to AD in this document are applicable to all the Microsoft products listed in this table.

## Cisco Unified Communications Directory Architecture

[Figure 17-3](#) shows the basic architecture of a Unified CM cluster. The embedded database stores all configuration information, including device-related data, call routing, feature provisioning, and user profiles. The database is present on all servers within a Unified CM cluster and is replicated automatically from the publisher server to all subscriber servers.

**Figure 17-3** Cisco Unified CM Architecture

By default, all users are provisioned manually in the publisher database through the Unified CM Administration web interface. Cisco Unified CM has two types of users:

- End users — All users associated with a physical person and an interactive login. This category includes all IP Telephony users as well as Unified CM administrators when using the User Groups and Roles configuration (equivalent to the Cisco Multilevel Administration feature in prior Unified CM versions).
- Application users — All users associated with other Cisco Unified Communications features or applications, such as Cisco Attendant Console, Cisco Unified Contact Center Express, or Cisco Unified Communications Manager Assistant. These applications need to authenticate with Unified CM, but these internal "users" do not have an interactive login and serve purely for internal communications between applications.

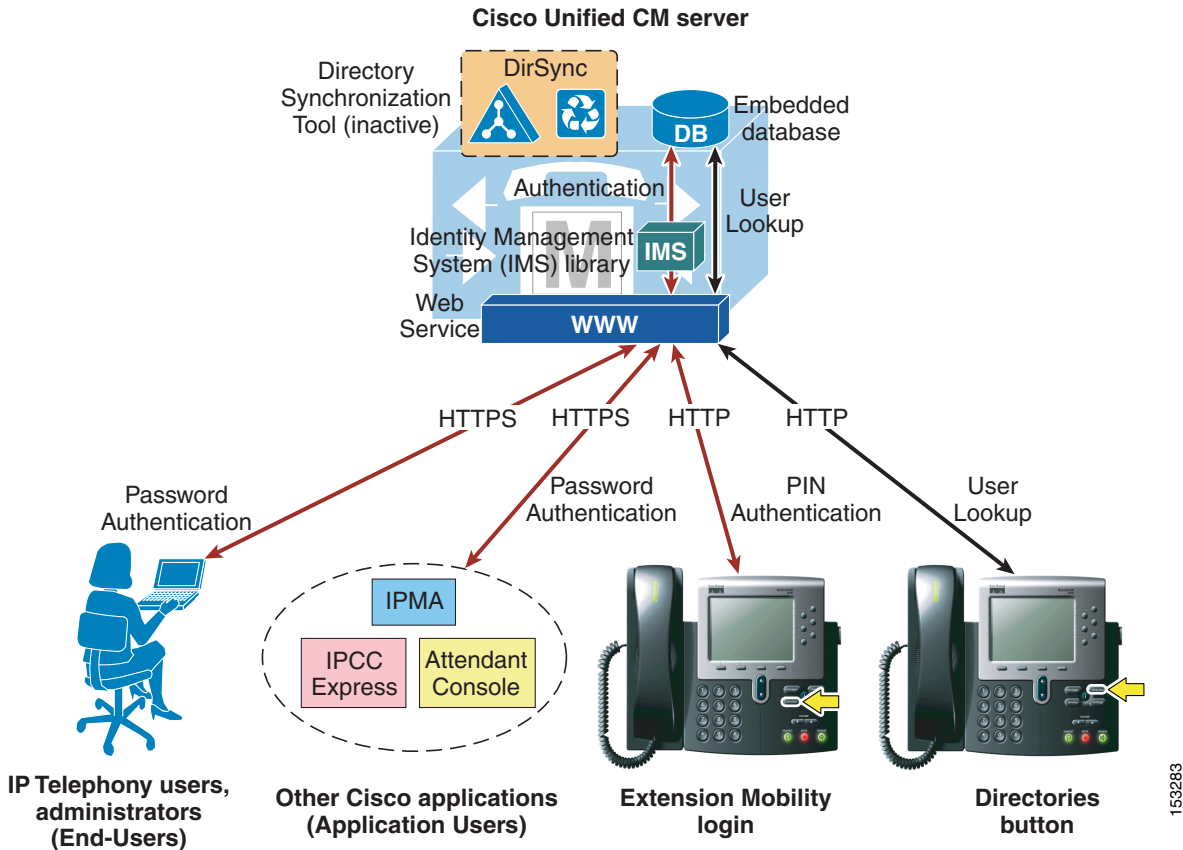
[Table 17-3](#) lists the application users created by default in the Unified CM database, together with the feature or application that uses them. Additional application users can be created manually when integrating other Cisco Unified Communications applications (for example, the **ac** application user for Cisco Attendant Console, the **jtapi** application user for Cisco Unified Contact Center Express, and so forth).

**Table 17-3** Default Application Users for Unified CM

Application User	Used by:
CCMAdministrator	Unified CM Administration (default "super user")
CCMQRTSecureSysUser	Cisco Quality Reporting Tool
CCMQRTSysUser	
CCMSysUser	Cisco Extension Mobility
IPMASecureSysUser	Cisco Unified Communications Manager Assistant
IPMASysUser	
WDSecureSysUser	Cisco WebDialer
WDSysUser	

Based on these considerations, [Figure 17-4](#) illustrates the default behavior in Unified CM for user-related operations such as lookups, provisioning, and authentication.

Figure 17-4 Default Behavior for User-Related Operations for Unified CM



159283

End users access the Unified CM User Options page via HTTPS and authenticate with a user name and password. If they have been configured as administrators by means of User Groups and Roles, they can also access the Unified CM Administration pages with the same credentials.

Similarly, other Cisco features and applications authenticate to Unified CM via HTTPS with the user name and password associated with their respective application users.

The authentication challenge carried by the HTTPS messages are relayed by the web service on Unified CM to an internal library called Identity Management System (IMS). In its default configuration, the IMS library authenticates both end users and application users against the embedded database. In this way, both "physical" users of the IP Communications system and internal application accounts are authenticated using the credentials configured in Unified CM.

End users may also authenticate with their user name and a numeric password (or PIN) when logging into the Extension Mobility service from an IP phone. In this case, the authentication challenge is carried via HTTP to Unified CM but is still relayed by the web service to the IMS library, which authenticates the credentials against the embedded database.

In addition, user lookups performed by IP Telephony endpoints via the Directories button communicate with the web service on Unified CM via HTTP and access data on the embedded database.

The importance of the distinction between End Users and Application Users becomes apparent when integration with a corporate directory is required. As mentioned in the previous section, this integration is accomplished by means of the following two separate processes:

- LDAP synchronization

This process uses an internal tool called Cisco Directory Synchronization (DirSync) on Unified CM to synchronize a number of user attributes (either manually or periodically) from a corporate LDAP directory. When this feature is enabled, users are automatically provisioned from the corporate directory. This feature applies only to End Users, while Application Users are kept separate and are still provisioned via the Unified CM Administration interface. In summary, End Users are defined in the corporate directory and synchronized into the Unified CM database, while Application Users are stored only in the Unified CM database and do not need to be defined in the corporate directory.

- LDAP authentication

This process enables the IMS library to authenticate user credentials against a corporate LDAP directory using the LDAP standard Simple\_Bind operation. When this feature is enabled, End User passwords are authenticated against the corporate directory, while Application User passwords are still authenticated locally against the Unified CM database. Cisco Extension Mobility PINs are also still authenticated locally.

Maintaining and authenticating the Application Users internally to the Unified CM database provides resilience for all the applications and features that use these accounts to communicate with Unified CM, independently of the availability of the corporate LDAP directory.

Cisco Extension Mobility PINs are also kept within the Unified CM database because they are an integral part of a real-time application, which should not have dependencies on the responsiveness of the corporate directory.

The next two sections describe in more detail LDAP synchronization and LDAP authentication, and they provide design best-practices for both functions.

**Note**

As illustrated in the section on [Directory Access for IP Telephony Endpoints, page 17-3](#), user lookups from endpoints can also be performed against a corporate directory by configuring the Cisco Unified IP Phone Services SDK on an external web server.

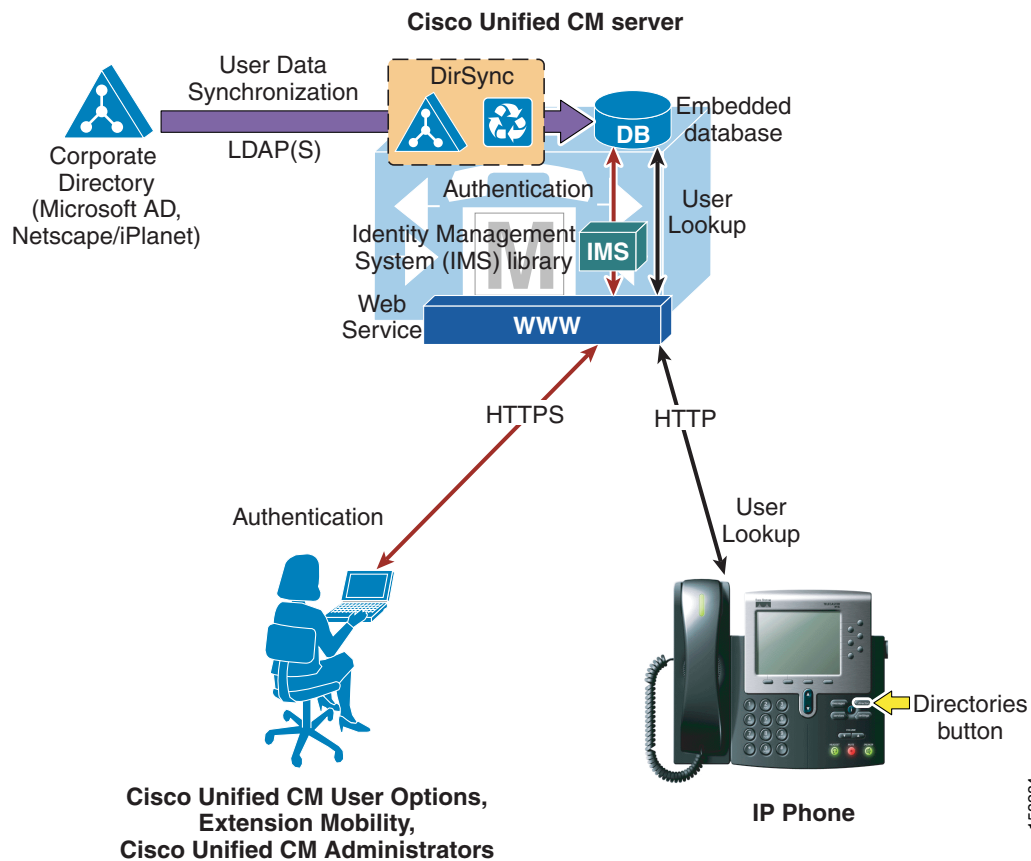
## LDAP Synchronization

Synchronization of Unified CM with a corporate LDAP directory allows the administrator to provision users easily by mapping Unified CM data fields to directory attributes. Critical user data maintained in the LDAP store is copied into the appropriate corresponding fields in the Unified CM database on a scheduled or on-demand basis. The corporate LDAP directory retains its status as the central repository. Unified CM has an integrated database for storing user data and a web interface within Unified CM Administration for creating and managing user accounts and data. When LDAP synchronization is enabled, the local database is still used, but the Unified CM facility to create end-user accounts is disabled. Management of end-user accounts is then accomplished through the interface of the LDAP directory. (See [Figure 17-5](#).) Accounts for application users can still be created and managed using the Unified CM Administration web interface.

The user account information is imported from the LDAP directory into the database located on the Unified CM publisher server. Information that is imported from the LDAP directory may not be changed by Unified CM. Additional user information specific to Cisco Unified Communications is managed by Unified CM and stored only within its local database. For example, device-to-user associations, speed

dials, call forward settings, and user PINs are all examples of data that is managed by Unified CM and does not exist in the corporate LDAP directory. The user data is then propagated from the Unified CM publisher server to the subscriber servers through the built-in database synchronization mechanism.

**Figure 17-5** Enabling Synchronization of User Data



When LDAP synchronization is activated, only one type of LDAP directory may be chosen globally for the cluster at any one time. Also, one attribute of the LDAP directory user is chosen to map into the Unified CM User ID field. Unified CM uses standard LDAPv3 for accessing the data.

Cisco Unified CM imports data from standard attributes. Extending the directory schema is not required. [Table 17-4](#) lists the attributes that are available for mapping to Unified CM fields. The data of the directory attribute that is mapped to the Unified CM User ID must be unique within all entries for that cluster. The attribute mapped to the Cisco UserID field must be populated in the directory and the `sn` attribute must be populated with data, otherwise those records are skipped during this import action. If the primary attribute used during import of end-user accounts matches any application user in the Unified CM database, that end user is not imported from the LDAP directory.

[Table 17-4](#) lists the attributes that are imported from the LDAP directory into corresponding Unified CM user fields, and it describes the mapping between those fields. Some Unified CM user fields might be mapped from one of several LDAP attributes.

**Table 17-4 Synchronized LDAP Attributes and Corresponding Unified CM Field Names**

Unified CM User Field	Microsoft Active Directory	Netscape, iPlanet, or Sun ONE	OpenLDAP <sup>1</sup>
User ID	<i>One of:</i> sAMAccountName mail employeeNumber telephoneNumber userPrincipalName	<i>One of:</i> uid mail employeeNumber telephonePhone	<i>One of:</i> uid mail employeeNumber telephonePhone
First Name	givenName	givenname	givenname
Middle Name	<i>One of:</i> middleName initials	initials	initials
Last Name	sn	sn	sn
Manager ID	manager	manager	manager
Department	department	departmentnumber	departmentnumber
Phone Number	<i>One of:</i> telephoneNumber ipPhone	telephonenumber	telephonenumber
Mail ID	<i>One of:</i> mail sAMAccountName	<i>One of:</i> mail uid	<i>One of:</i> mail uid

1. This directory type is supported only with Cisco Unified CM 7.1(2) and later releases.

Table 17-5 contains a list of additional attributes that are imported by the Dirsynch process and copied into the Unified CM database but are not displayed in the administrator user configuration web pages. The attribute msRTCSIP-PrimaryUserAddress is populated in AD when Microsoft OCS is used. This table is included for completeness.

**Table 17-5 Synchronized LDAP Attributes that Are Not Displayed**

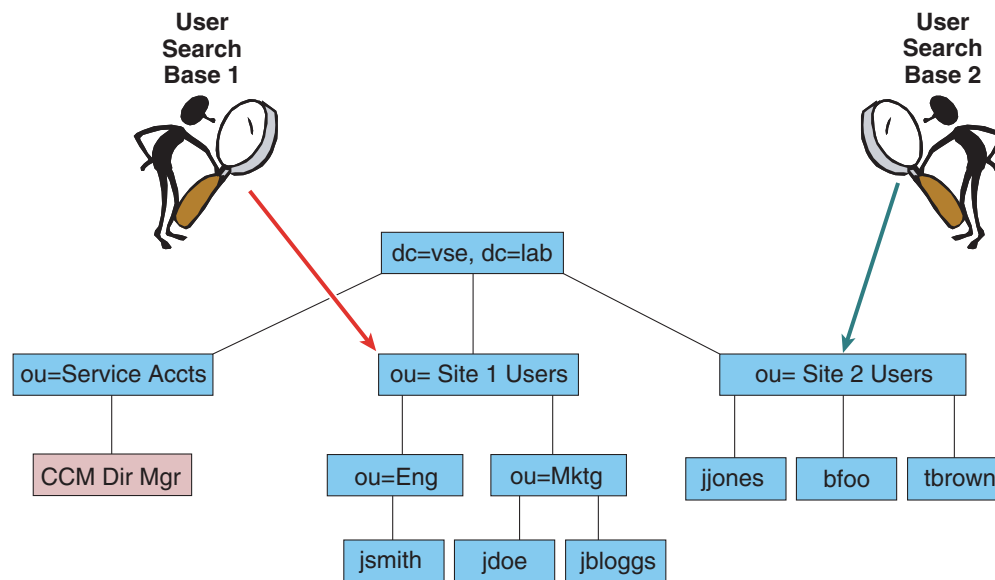
Unified CM User Field	Microsoft Active Directory	Netscape, iPlanet, or Sun ONE	OpenLDAP <sup>1</sup>
objectGUID	objectGUID	Not applicable	Not applicable
OCSPPrimaryUserAddress	msRTCSIP-PrimaryUserAddress 1	Not applicable	Not applicable
Title	title	Title	title
Home Phone Number	homePhone	Homephone	hometelephonenumber
Mobile Phone Number	mobile	Mobile	Mobitelephonenumber
Pager Number	pager	Pager	pagertelephonenumber

1. This directory type is supported only with Cisco Unified CM 7.1(2) and later releases.

The synchronization is performed by a process called Cisco DirSync, which is enabled through the Serviceability web page. When enabled, it allows one to five synchronization agreements to be configured in the system. An agreement specifies a search base that is a position in the LDAP tree where Unified CM will begin its search for user accounts to import. Unified CM can import only users that exist in the domain specified by the search base for a particular synchronization agreement.

In [Figure 17-6](#), two synchronization agreements are represented. One synchronization agreement specifies User Search Base 1 and imports users jsmith, jdoe and jblogs. The other synchronization agreement specifies User Search Base 2 and imports users jjones, bfoo, and tbrown. The CCMDirMgr account is not imported because it does not reside below the point specified by a user search base. When users are organized in a structure in the LDAP directory, you can use that structure to control which user groups are imported. In this example, a single synchronization agreement could have been used to specify the root of the domain, but that search base would also have imported the Service Accts. The search base does not have to specify the domain root; it may specify any point in the tree.

**Figure 17-6** User Search Bases



153285

To import the data into the Unified CM database, the system performs a bind to the LDAP directory using the account specified in the configuration as the LDAP Manager Distinguished Name, and reading of the database is done with this account. The account must be available in the LDAP directory for Unified CM to log in, and Cisco recommends that you create a specific account with permissions to allow it to read all user objects within the sub-tree that was specified by the user search base. The sync agreement specifies the full Distinguished Name of that account so that the account may reside anywhere within that domain. In the example in [Figure 17-6](#), CCMDirMgr is the account used for the synchronization.

It is possible to control the import of accounts through use of permissions of the LDAP Manager Distinguished Name account. In this example, if that account is restricted to have read access to ou=Eng but not to ou=Mktg, then only the accounts located under Eng will be imported.

Synchronization agreements have the ability to specify multiple directory servers to provide redundancy. You can specify an ordered list of up to three directory servers in the configuration that will be used when attempting to synchronize. The servers are tried in order until the list is exhausted. If none of the directory servers responds, then the synchronization fails, but it will be attempted again according to the configured synchronization schedule.

## Synchronization Mechanism

The synchronization agreement specifies a time for synchronizing to begin and a period for re-synchronizing that can be specified in hours, days, weeks, or months (with a minimum value of 6 hours). A synchronization agreement can also be set up to run only once at a specific time.

When synchronization is enabled for the first time on a Unified CM publisher server, user accounts that exist in the corporate directory are imported into the Unified CM database. Then either existing Unified CM end-user accounts are activated and data is updated, or a new end-user account is created according to the following process:

1. If end-user accounts already exist in the Unified CM database and a synchronization agreement is configured, all pre-existing accounts are marked inactive in Unified CM. The configuration of the synchronization agreement specifies a mapping of an LDAP database attribute to the Unified CM UserID. During the synchronization, accounts from the LDAP database that match an existing Unified CM account cause that Unified CM account to be marked active again.
2. After the synchronization is completed, any accounts that were not set to active are permanently deleted from Unified CM when the garbage collection process runs. Garbage collection is a process that runs automatically at the fixed time of 3:15 AM, and it is not configurable. The deletion of Unified CM accounts that do not match LDAP directory accounts is necessary because Unified CM cannot manage accounts while synchronization is configured.
3. Subsequently when changes are made in the corporate directory, the synchronization from Microsoft Active Directory occurs as a full re-synchronization at the next scheduled synchronization period. On the other hand, the iPlanet and Sun ONE directory products perform an incremental synchronization triggered by a change in the directory. The following sections present examples of each of these two scenarios.



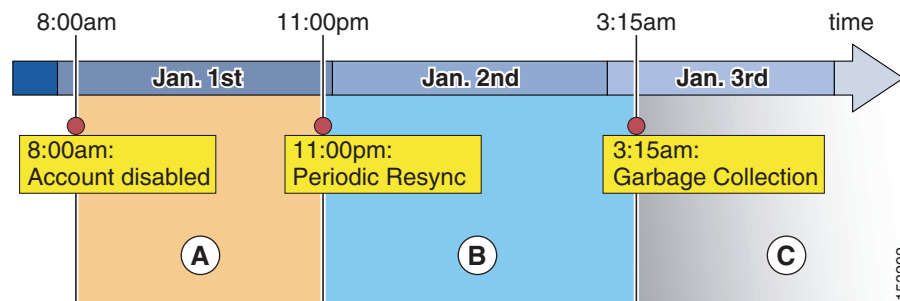
### Note

Once users are synchronized from LDAP into the Unified CM database, deletion of a synchronization configuration will cause users that were imported by that configuration to be marked inactive in the database. Garbage collection will subsequently remove those users.

## Account Synchronization with Active Directory

Figure 17-7 shows an example timeline of events for a Unified CM deployment where LDAP Synchronization and LDAP Authentication have both been enabled. The re-synchronization is set for 11:00 PM daily.

**Figure 17-7** Change Propagation with Active Directory



After the initial synchronization, the creation, deletion, or disablement of an account will propagate to Unified CM according to the timeline shown in [Figure 17-7](#) and as described in the following steps:

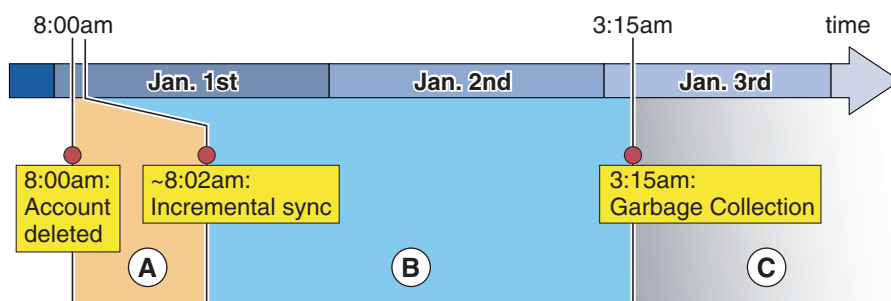
1. At 8:00 AM on January 1, an account is disabled or deleted in AD. From this time and during the whole period A, password authentication (for example, Unified CM User Options page) will fail for this user because Unified CM redirects authentication to AD. However, PIN authentication (for example, Extension Mobility login) will still succeed because the PIN is stored in the Unified CM database.
2. The periodic re-synchronization is scheduled for 11:00 PM on January 1. During that process, Unified CM will verify all accounts. Any accounts that have been disabled or deleted from AD will at that time be tagged in the Unified CM database as inactive. After 11:00 PM on January 1, when the account is marked inactive, both the PIN and password authentication by Unified CM will fail.
3. Garbage collection of accounts occurs daily at the fixed time of 3:15 AM. This process permanently deletes user information from the Unified CM database for any record that has been marked inactive for over 24 hours. In this example, the garbage collection that runs at 3:15 AM on January 2 does not delete the account because it has not been inactive for 24 hours yet, so the account is deleted at 3:15 AM on January 3. At that point, the user data is permanently deleted from Unified CM.

If an account has been created in AD at the beginning of period A, it will be imported to Unified CM at the periodic re-synchronization that occurs at the beginning of period B and will immediately be active on Unified CM.

### Account Synchronization with iPlanet or Sun ONE

The iPlanet and Sun ONE products support incremental synchronization agreements and use a different synchronization timeline than Microsoft Active Directory. The synchronization makes use of the Persistent Search mechanism defined by an IETF Draft and supported by many LDAP implementations. [Figure 17-8](#) shows an example of this synchronization timeline for a Unified CM deployment with LDAP Synchronization and LDAP Authentication both enabled.

**Figure 17-8** Change Propagation with iPlanet and Sun ONE



The example in [Figure 17-8](#) involves the following steps:

1. An account is deleted from the corporate directory at 8:00 AM on January 1, which causes an incremental update to be sent from the LDAP server to Unified CM. Unified CM sets its corresponding copy of the data to inactive. Because LDAP authentication is configured, the user will be unable to log in via password as soon as the LDAP server has deleted the record. Also, the PIN may not be used for login at the moment the Unified CM record is marked inactive.
2. During period B, the user's record is still present in Unified CM, albeit inactive.

3. When the garbage collection runs at 3:15 AM on January 2, the record has not yet been inactive for 24 hours. The data remains in the Unified CM database until the beginning of period C on January 3, when the garbage collection process runs again at 3:15 AM and determines that the record has been inactive for 24 hours or more. The record is then permanently deleted from the database.

Accounts that are newly created in the directory are synchronized to Unified CM via incremental updates as well, and they may be used as soon as the incremental update is received.

## Security Considerations

During the import of accounts, no passwords or PINs are copied from the LDAP directory to the Unified CM database. If LDAP synchronization is not enabled in Unified CM, the password for the end user is managed by using Unified CM Administration. The password and PIN are stored in an encrypted format in the Unified CM database. The PIN is always managed on Unified CM. If you want to use the LDAP directory password to authenticate an end user, see the section on [LDAP Authentication](#), page 17-17.

The connection between the Unified CM publisher server and the directory server can be secured by enabling Secure LDAP (SLDAP) on Unified CM and the LDAP server. Secure LDAP enables LDAP to be sent over a Secure Socket Layer (SSL) connection and can be enabled by uploading the SSL certificate from within the Unified CM Platform Administration. For detailed procedure steps, refer to the Unified CM product documentation available at <http://www.cisco.com>. Refer to the documentation of the LDAP directory vendor to determine how to enable SLDAP.

## Best Practices for LDAP Synchronization

Observe the following design and implementation best practices when deploying LDAP synchronization with Cisco Unified CM:

- Use a specific account within the corporate directory to allow the Unified CM synchronization agreement to connect and authenticate to it. Cisco recommends that you use an account dedicated to Unified CM, with minimum permissions set to "read" all user objects within the desired search base and with a password set never to expire. The password for this account in the directory must be kept in synchronization with the password configuration of the account in Unified CM. If the service account password changes in the directory, be sure to update the account configuration in Unified CM.
- All synchronization agreements on a given cluster must integrate with the same family of LDAP servers (either Microsoft AD, iPlanet, or Sun ONE).
- Stagger the scheduling of synchronization agreements so that multiple agreements are not querying the same LDAP servers simultaneously. Choose synchronization times that occur during quiet periods (off-peak hours).
- If security of user data is required, enable Secure LDAP (SLDAP) by checking the **Use SSL** field on the LDAP Directory configuration page in Unified CM Administration.
- Ensure that the LDAP directory attribute chosen to map into the Unified CM UserID field is unique within all synchronization agreements for that cluster.
- The attribute chosen as UserID must not be the same as that for any of the Application Users defined in Unified CM.
- An existing account in the Unified CM database before synchronization is maintained only if an account imported from the LDAP directory has a matching attribute. The attribute that is matched to the Unified CM UserID is determined by the synchronization agreement.

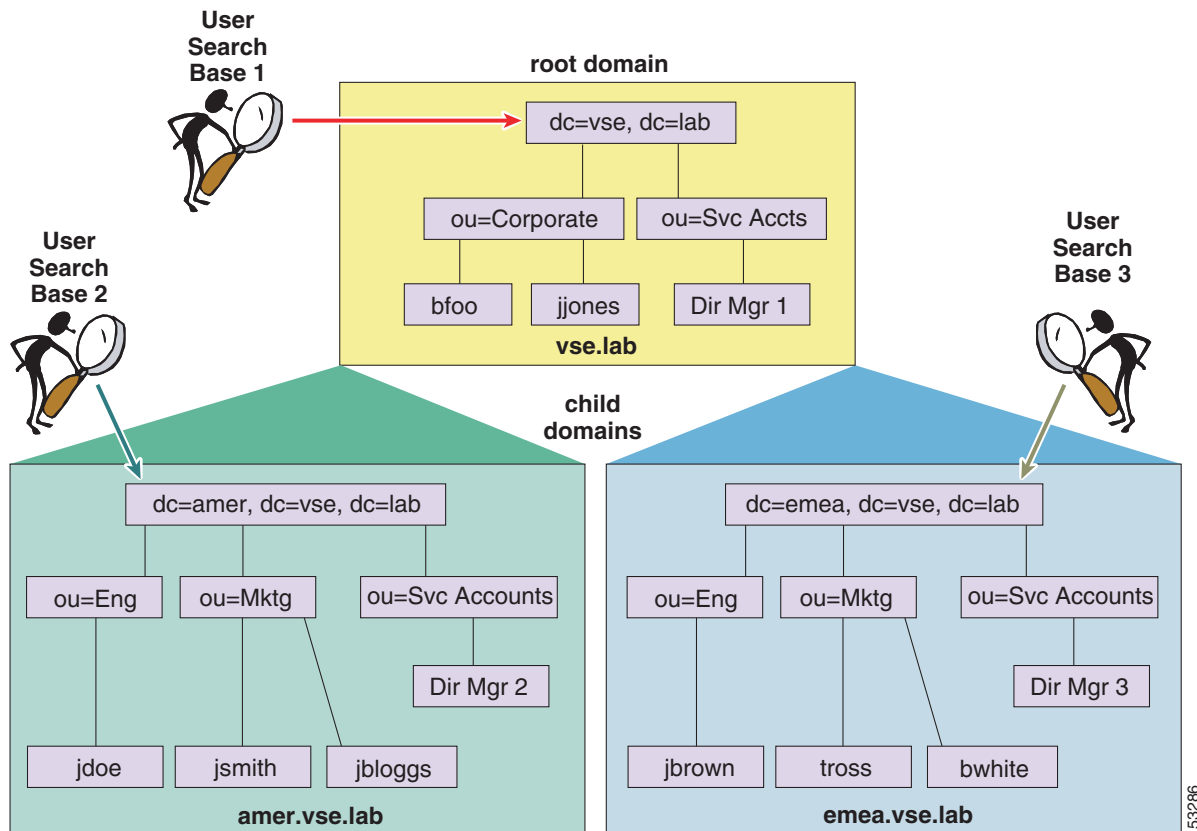
- Configure at least two LDAP servers for redundancy. You can use IP addresses instead of host names to eliminate dependencies on Domain Name System (DNS) availability.
- Administer end-user accounts through the LDAP directory's management tools, and manage the Cisco-specific data for those accounts through the Unified CM Administration web page.
- For AD deployments, the ObjectGUID is used internally in Unified CM as the key attribute of a user. The attribute in AD that corresponds to the Unified CM User ID may be changed in AD. For example, if sAMAccountname is being used, a user may change their sAMAccountname in AD, and the corresponding user record in Unified CM would be updated.

With all other LDAP platforms, the attribute that is mapped to User ID is the key for that account in Unified CM. Changing that attribute in LDAP will result in a new user being created in Unified CM, and the original user will be marked inactive.

## Additional Considerations for Microsoft Active Directory

A synchronization agreement for a domain will not synchronize users outside of that domain nor within a child domain because Unified CM does not follow AD referrals during the synchronization process. The example in [Figure 17-9](#) requires three synchronization agreements to import all of the users. Although Search Base 1 specifies the root of the tree, it will not import users that exist in either of the child domains. Its scope is only VSE.LAB, and separate agreements are configured for the other two domains to import those users.

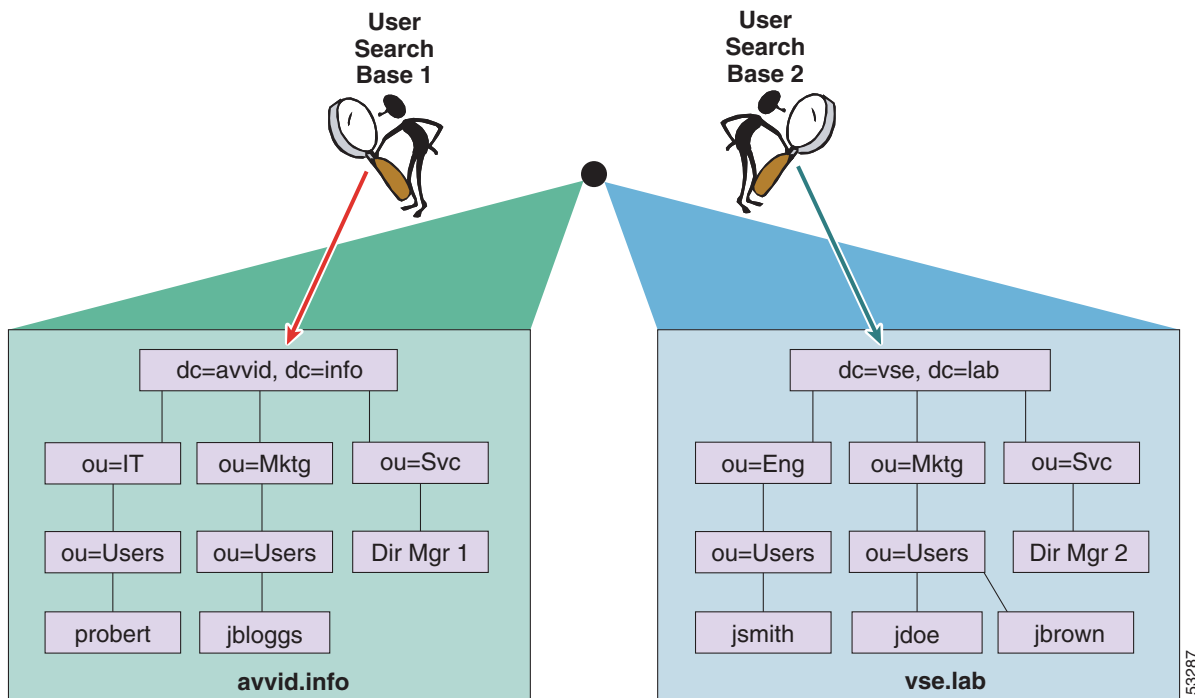
**Figure 17-9** Synchronization with Multiple Active Directory Domains



In [Figure 17-9](#), each of the domains and sub-domains contains at least one domain controller (DC) associated to them, and the three synchronization agreements each specify the appropriate domain controller. The DCs have information only on users within the domain where they reside, therefore three synchronization agreements are required to import all of the users.

When synchronization is enabled with an AD forest containing multiple trees, as shown in [Figure 17-10](#), multiple synchronization agreements are still needed for the same reasons listed above. Additionally, the UserPrincipalName (UPN) attribute is guaranteed by Active Directory to be unique across the forest and must be chosen as the attribute that is mapped to the Unified CM UserID. For additional considerations on the use of the UPN attribute in a multi-tree AD scenario, see the section on [Additional Considerations for Microsoft Active Directory](#), page 17-20.

**Figure 17-10** Synchronization with Multiple AD Trees (Discontiguous Namespaces)

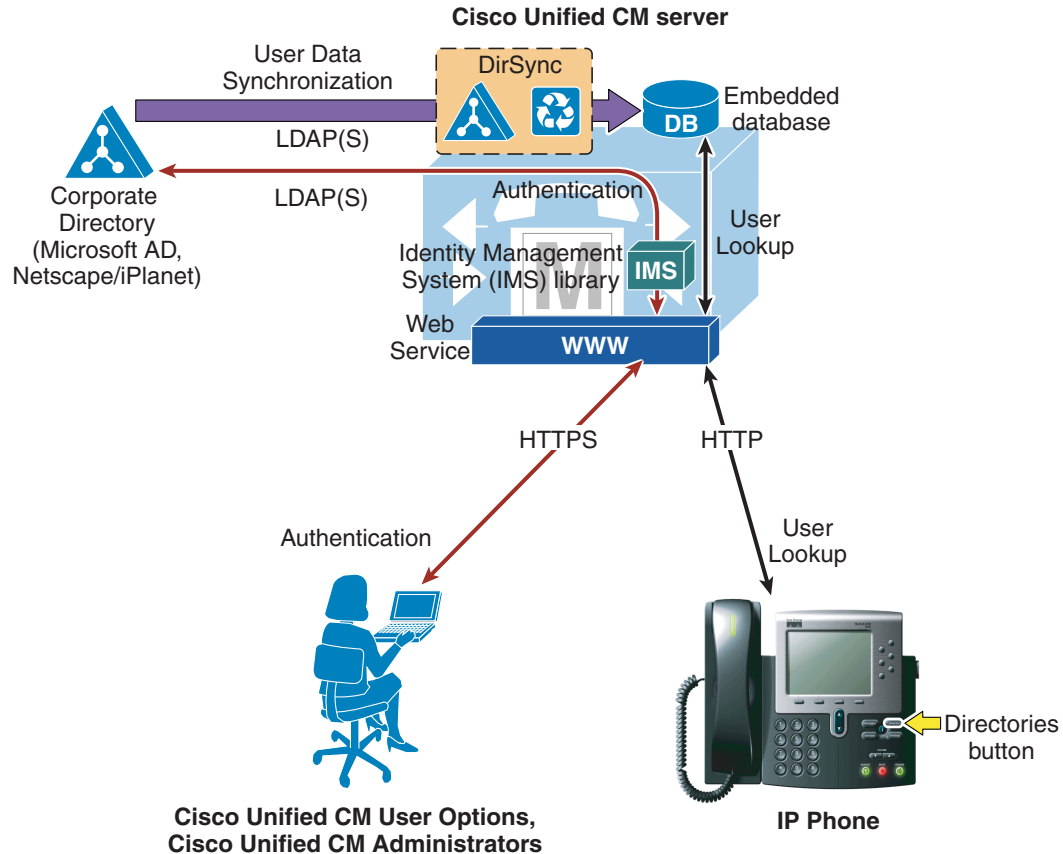


Unified CM sends an LDAP search filter string to AD when performing the synchronization of accounts. One of the clauses is to not return accounts that have been marked as disabled in AD. An account marked disabled by AD, such as when failed login attempts are exceeded, will be marked inactive if synchronization runs while the account is disabled.

## LDAP Authentication

The LDAP authentication feature enables Unified CM to authenticate end user passwords against a corporate LDAP directory instead of using the embedded database. This authentication is accomplished with an LDAPv3 connection established between the IMS module within Unified CM and a corporate directory server, as shown in [Figure 17-11](#).

Figure 17-11 Enabling LDAP Authentication



To enable authentication, a single authentication agreement may be defined for the entire cluster. The authentication agreement supports configuration of up to three LDAP servers for redundancy and also supports secure connections LDAP over SSL (SLDAP) if desired. Authentication can be enabled only when LDAP synchronization is used.

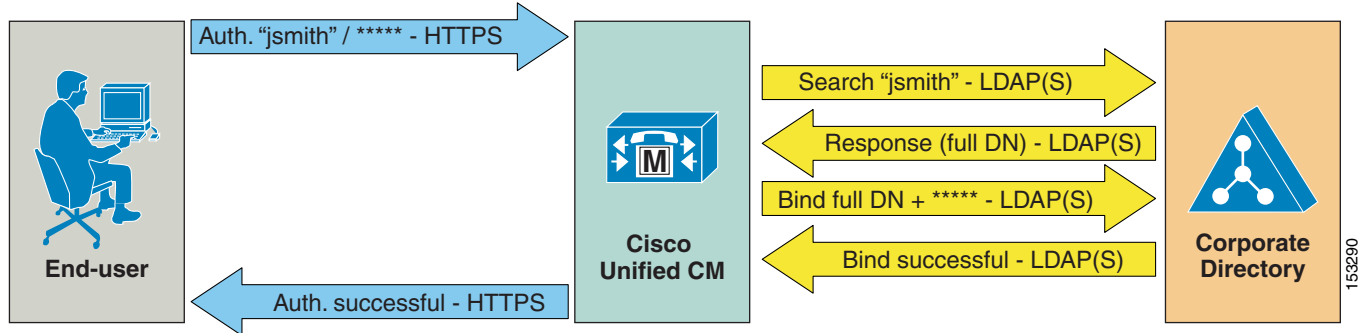
The following statements describe Unified CM's behavior when authentication is enabled:

- End user passwords are authenticated against the corporate directory by a simple bind operation.
- Application user passwords are authenticated against the Unified CM database.
- End user PINs are authenticated against the Unified CM database.

This behavior is in line with the guiding principle of providing single logon functionality for end users while making the operation of the real-time IP Communications system independent of the availability of the corporate directory, and is shown graphically in [Figure 17-12](#).



Figure 17-13 Authentication Process



Observe the following design and implementation best-practices when deploying LDAP authentication with Cisco Unified CM:

- Create a specific account within the corporate directory to allow Unified CM to connect and authenticate to it. Cisco recommends that you use an account dedicated to Unified CM, with minimum permissions set to "read" all user objects within the desired search base and with a password set to never expire. The password for this account in the directory must be kept in synchronization with the password configuration of the account in Unified CM. If the account password changes in the directory, be sure to update the account configuration in Unified CM. If LDAP synchronization is also enabled, you can use the same account for both functions.
- Enable LDAP authentication on Unified CM by specifying the credentials of the aforementioned account under LDAP Manager Distinguished Name and LDAP Password, and by specifying the directory subtree where all the users reside under LDAP User Search Base.
- Configure at least two LDAP servers for redundancy. You can use IP addresses instead of host names to eliminate dependencies on Domain Name System (DNS) availability.
- This method provides single logon functionality to all end users: when they log in to the Unified CM User Options page, they can now use their corporate directory credentials.
- Manage end-user passwords from within the corporate directory interface. Note that the password field is no longer displayed in the Unified CM Administration pages when authentication is enabled.
- Manage end-user PINs from the Unified CM Administration web pages or from the Unified CM User Options page.
- Manage Application User passwords from the Unified CM Administration web pages. Remember that these application users facilitate communication and remote call control with other Cisco Unified Communications applications and are not associated with real people.
- Enable single logon for Unified CM administrators by adding their corresponding end user to the Unified CM Super Users user group from the Unified CM Administration web pages. Multiple levels of administrator rights can be defined by creating customized user groups and roles.

## Additional Considerations for Microsoft Active Directory

In environments that employ a distributed AD topology with multiple domain controllers geographically distributed, authentication speed might be unacceptable. When the Domain Controller for the authentication agreement does not contain a user account, a search must occur for that user across other domain controllers. If this configuration applies, and login speed is unacceptable, it is possible to set the authentication configuration to use a Global Catalog Server.

An important restriction exists, however. Because a Global Catalog does not carry the Employee ID attribute, this method cannot be used if the Employee ID is used as the login. Only Domain Controllers may be used with this attribute.

To enable queries against the Global Catalog, simply configure the LDAP Server Information in the LDAP Authentication page to point to the IP address or host name of a Domain Controller that has the Global Catalog role enabled, and configure the LDAP port as 3268.

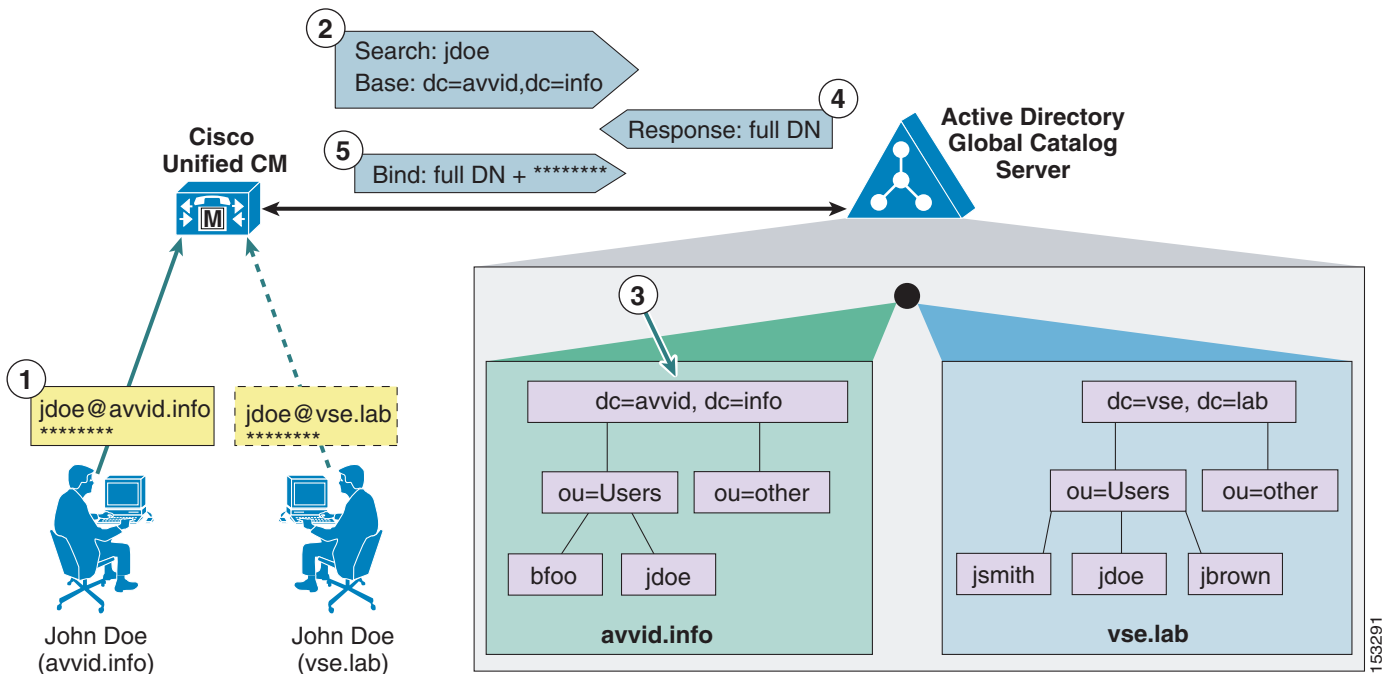
The use of Global Catalog for authentication becomes even more efficient if the users synchronized from Microsoft AD belong to multiple domains, because it allows Unified CM to authenticate users immediately without having to follow referrals. For these cases, point Unified CM to a Global Catalog server and set the LDAP User Search Base to the top of the root domain.

In the case of a Microsoft AD forest that encompasses multiple trees, some additional considerations apply. Because a single LDAP search base cannot cover multiple namespaces, Unified CM must use a different mechanism to authenticate users across these discontinuous namespaces.

As mentioned in the section on [LDAP Synchronization, page 17-9](#), in order to support synchronization with an AD forest that has multiple trees, the UserPrincipalName (UPN) attribute must be used as the user ID within Unified CM. When the user ID is the UPN, the LDAP authentication configuration page within Unified CM Administration does not allow you to enter the LDAP Search Base field, but instead it displays the note, "LDAP user search base is formed using userid information."

In fact, the user search base is derived from the UPN suffix for each user, as shown in [Figure 17-14](#). In this example, a Microsoft Active Directory forest consists of two trees, `avvid.info` and `vse.lab`. Because the same user name may appear in both trees, Unified CM has been configured to use the UPN to uniquely identify users in its database during the synchronization and authentication processes.

**Figure 17-14 Authentication with Microsoft AD Forests with Multiple Trees**



As shown in [Figure 17-14](#), a user named John Doe exists in both the avvid.info tree and the vse.lab tree. The following steps illustrate the authentication process for the first user, whose UPN is `jdoue@avvid.info`:

1. The user authenticates to Unified CM via HTTPS with its user name (which corresponds to the UPN) and password.
2. Unified CM performs an LDAP query against a Microsoft Active Directory Global Catalog server, using the user name specified in the UPN (anything before the @ sign) and deriving the LDAP search base from the UPN suffix (anything after the @ sign). In this case, the user name is `jdoue` and the LDAP search base is `"dc=avvid, dc=info"`.
3. Microsoft Active Directory identifies the correct Distinguished Name corresponding to the user name in the tree specified by the LDAP query. In this case, `"cn=jdoue, ou=Users, dc=avvid, dc=info"`.
4. Microsoft Active Directory responds via LDAP to Unified CM with the full Distinguished Name for this user.
5. Unified CM attempts an LDAP bind with the Distinguished Name provided and the password initially entered by the user, and the authentication process then continues as in the standard case shown in [Figure 17-13](#).


**Note**

Support for LDAP authentication with Microsoft AD forests containing multiple trees relies exclusively on the approach described above. Therefore, support is limited to deployments where the UPN suffix of a user corresponds to the root domain of the tree where the user resides. AD allows the use of aliases, which allows a different UPN suffix. If the UPN suffix is disjointed from the actual namespace of the tree, it is not possible to authenticate Unified CM users against the entire Microsoft Active Directory forest. (It is, however, still possible to use a different attribute as user ID and limit the integration to a single tree within the forest.)

## Sizing Unified CM Database Synchronization

The Unified CM Database Synchronization feature provides a mechanism for importing a subset of the user configuration data (attributes) from the LDAP store into the Unified CM publisher database. Once synchronization of a user account has occurred, the copy of each user's LDAP account information may then be associated to additional data required to enable specific Unified Communications features for that user. When authentication is also enabled, the user's credentials are used to bind to the LDAP store for password verification. The end user's password is never stored in the Unified CM database when enabled for synchronization and/or authentication.

User account information is cluster-specific. Each Unified CM publisher server maintains a unique list of those users receiving Unified Communications services from that cluster. Synchronization agreements are cluster-specific, and each publisher has its own unique copy of user account information.

The Unified CM database supports up to 60,000 configured or synchronized user accounts. To optimize directory synchronization performance, Cisco recommends considering the following points:

- Directory lookup from phones and web pages may use the Unified CM database or the IP Phone Service SDK. When directory lookup functionality uses the Unified CM database, only users who were configured or synchronized from the LDAP store are shown in the directory. If a subset of users are synchronized, then only that subset of users are seen on directory lookup.
- When the IP Phone Services SDK is used for directory lookup, but authentication of Unified CM users to LDAP is needed, the synchronization can be limited to the subset of users who would log in to the Unified CM cluster.

- If only one cluster exists, and fewer than 60,000 users exist in the LDAP store, and directory lookup is implemented to the Unified CM database, then it is possible to import the entire LDAP directory.
- When multiple clusters exist and the number of users in LDAP is less than 60,000, it is possible to import all users into every cluster to ensure directory lookup has all entries.
- If the number of user accounts in LDAP exceeds 60,000 and the entire user set should be visible to all users, it will be necessary to use the Unified IP Phone Services SDK to off-load the directory lookup from Unified CM.
- If both synchronization and authentication are enabled, user accounts that have either been configured or synchronized into the Unified CM database will be able to log in to that cluster. The decision about which users to synchronize will impact the decision on directory lookup support.

**Note**

---

Cisco supports the synchronization of up to 60,000 user accounts per cluster, but does not enforce this limit. Synchronizing more than 60,000 user accounts can lead to starvation of disk space, slower database performance, and longer upgrade times.

---

## Using the LDAP Structure to Control Synchronization

Many deployments of LDAP directories use the Organizational Unit Name (OU) to group users into a logical order and sometimes hierarchical order. If the LDAP directory has a structure that organizes users into multiple OUs, then it often is possible to use that structure to control the groups of users imported. Each individual Unified CM synchronization agreement specifies a single OU. All active accounts under the specified OU, even within sub-OUs, are imported. Only those users in the OU are synchronized. When multiple OUs containing users are required in a cluster, multiple synchronization agreements are required. When an OU contains users that will not be assigned Unified Communications resources, Cisco recommends omitting those OUs from the directory synchronization.

The same technique may be used with AD, which defines containers. A synchronization agreement may specify a particular container in the directory tree and thereby limit the extent of the import.

Because there are only five synchronization agreements available, LDAP deployments with many OUs or containers can quickly exhaust this technique. One possible method to synchronize users in a multi-OU environment is to control the permissions assigned to the synchronization service account. Configure the synchronization agreement to a tree node that contains a mix of users, and then restrict the system account from read access to selected parts of the subtree. Refer to your LDAP vendor documentation on how to restrict this access.

