



CHAPTER 6

Installing Cisco Prime Network Using the Wizard

This chapter covers the typical installation of the gateway and unit using the installation wizard.

This chapter includes:

- [Installation Overview, page 6-1](#)
- [Installing the Gateway Using the Install Wizard, page 6-2](#)
- [Installing the Unit Using the Install Wizard, page 6-6](#)
- [What's Next?, page 6-9](#)

Installation Overview

You can install Cisco Prime Network gateway and unit in one of the two ways:

- Using command line instructions.
- Using the installation wizard.

This chapter covers the installation using only the wizard.

For CLI installation of the gateway with and without embedded database, see [Chapter 4, “Installing Gateway With an Embedded Database”](#) and [Chapter 5, “Installing Gateway With an External Database”](#).

For CLI installation of the unit, see [Chapter 7, “Installing Cisco Prime Network Unit”](#).

Before You Begin

Before you begin the installation using the wizard, see the following prerequisites are met:

- Java 1.6 or later installed on the local machine.
- An X client is available on the local machine.
- Gateway and Unit requirements are met as in [Chapter 2, “Installation Requirements”](#).
- If installing an embedded database, verify that all the embedded database installation requirements are met as in [Chapter 4, “Installing Gateway With an Embedded Database”](#).

Installing the Gateway Using the Install Wizard

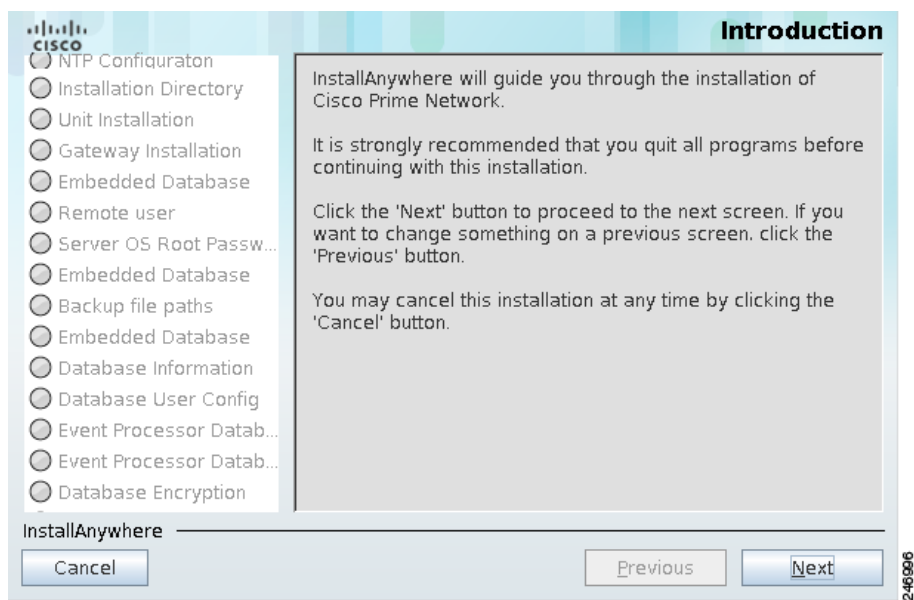
This section describes how to install the gateway using the install wizard. To install the gateway using the wizard:

Step 1 Launch the installer (install.bin) using the X client and enter the following details:

- a. Gateway hostname or IP address.
- b. Gateway username and password.

The install wizard launches and the Introduction window is displayed (Figure 6-1).

Figure 6-1 Cisco Prime Network Install Wizard



Step 2 Click **Next**. The Installation Setup window is displayed.

Step 3 In the Installation Setup window, do the following:

- a. Enter the name of the user account (*network user*) for the Cisco Prime Network application.
- b. Select the Prime Network server type as Gateway.

Step 4 Click **Next**. The Server OS Root Password window is displayed.

Step 5 In the Server OS Root Password window, enter the password of the OS root user.

Step 6 Click **Next**. The Installation Directory window is displayed.



Note The default installation location is `/export/home/network user`, where *network user* is the operating system user account (username in [Step 3](#)) for the Prime Network application.

Step 7 To change the default installation location, click **Choose...** and choose the preferred installation directory.

Step 8 After choosing the required directory, click **OK**, or click **Cancel** to return to the default installation location.

Step 9 Click **Next** to accept the installation directory location. The Gateway Installation window is displayed.

Step 10 In the Gateway Installation window, do the following:

- a. Select the installation mode:
 - Suite-integrated: Select this option to install the Prime Network as part of the IP-NGN suite. If the installation is suite-integrated, an additional window - Prime Central Information window appears in the install wizard. Enter the fields as shown in [Table 6-1](#).

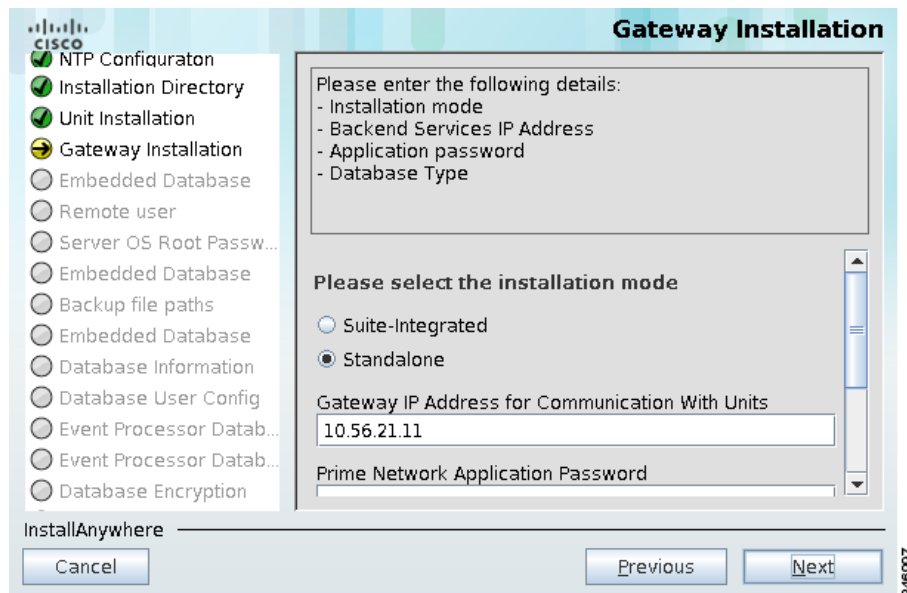
Table 6-1 Suite Information

Field	Enter..
Cisco Prime Central DB Server IP Address	DB Server IP address
Cisco Prime Central DB Port	Oracle's listener port number
Cisco Prime Central DB SID	Oracle's SID (example: mcdb)
Cisco Prime Central DB Username	Username of the Prime Central DB
Cisco Prime Central DB password	Password of the Prime Central DB

- Standalone: Select this option to install a standalone gateway.

b. Enter the gateway IP address for communication with the units, as shown in [Figure 6-2](#)

Figure 6-2 Gateway Installation Window



- c. Enter the Prime Network application password and re-enter the password to confirm.
- d. Select the database type. Depending on the database type selected, do one of the following:
 - For Embedded Database.

Select **Embedded Database** and click **Next**. The Embedded Database window is displayed. The following table lists the fields and values to enter.

Table 6-2 Embedded Database Fields

Field	Enter..	Notes
Database Server	Server hostname/IP address.	
Database OS User	The username of the Unix user of the database. The default is oracle.	
Database Zip Files Path	Location where the database Zip files are located.	
Database Home Directory	Path to the Oracle user home directory. The default is /export/home/oracle.	
Data files path	Path to the folder in which the data files are located.	
Redo Logs path	Path to the redo logs.	On a Solaris server, use UFS partition mounted with the forcedirectio option. On a Linux server, use ext3 partition mounted with the default mount options. The locations of the redo logs, archive and backup files should not reside on the same disk as the data files.
Archive Logs path	Path to the directory containing the archive logs.	The locations of the redo logs, archive and backup files should not reside on the same disk as the data files.
Backup files path	Path to the directory containing the backup files.	This directory must have three times the amount of free disk space as the database size. The locations of the redo logs, archive and backup files should not reside on the same disk as the data files.
SMTP Server IP Address/Hostname	company-email-server-address	You must have SMTP server access from the gateway in order to receive email notifications. Port 25 must be available.
Email for Receiving Alerts	username@company-name.com	E-mail address to receive notification when database errors occur.

Field	Enter..	Notes
Would you like to enable Database auto-backup?	Yes/No	
Select a database profile (RAM sizes are the minimal requirement for the database)	Select from the available list based on the RAM size available.	For more information on database profile, see “Configuring the Database Size” in Creating and Configuring an Oracle Database , page 5-2.

- For External Database:
 - a. Select **External Database** and click **Next**. The Database Information window is displayed. The following table lists the fields and values to enter.

Table 6-3 Database Information fields

Field	Enter..
Database Server	Server hostname/IP address.
Database Port	Oracle listener port number.
SID	Oracle’s SID.
Administrator username	Oracle’s admin username.
Administrator password	Oracle’s admin password.
Data Files Path	Location of the datafiles.
Does your database require an encrypted connection?	Yes/No
Prime Network setup can create the necessary database users, or it can use any predefined users. Do you want Prime Network to create the users?	Yes/No
Do you want the same Schema settings for the Event Processor? ¹	Select yes to apply the same schema setting for Event Processor database. Select no to enter database configuration and encryption information in the Event Processor Database Config and Event Processor Database Encryption windows.

1.If you select separate schema setting for Event Processor database, two additional windows, Event Processor Database Config and Event Processor Database Encryption window are displayed. The fields in these windows are same as that in the Cisco Prime Network Database Information and Database Encryption window.

- b. Click **Next**. The Database Encryption window is displayed. The following table lists the fields and values to enter in this window. If you are selecting separate schema setting for the Event Processor in the Database Information window in [Table 6-3](#), the Event Processor Data Encryption window will also appear after the Database Encryption window.

Table 6-4 Database Encryption fields

Field	Enter..
Encryption Method (Accepted, Requested or Required)	Default is Required.
Encryption Algorithm	Select from the available list of algorithms.

c. Click **Next**. The Pre-Installation Summary window is displayed.

Step 11 Click **Install** to start the installation, or click **Previous** to modify values on any of the previous windows.

Step 12 When the installation is complete, click **Finish**.

The following logs are available:

- Installation logs at `/var/adm/cisco/prime-network/logs/`.
- Embedded database configuration logs at `NETWORKHOME/local/scripts/embedded_oracle`.
- Configuration logs at `NETWORKHOME/Main/logs`.

Step 13 A prompt appears to start the gateway. Click **Yes** to start the gateway or **No** to start later.



Note If the gateway is started for the first time, launching the gateway will take around 15 mins.

Installing the Unit Using the Install Wizard

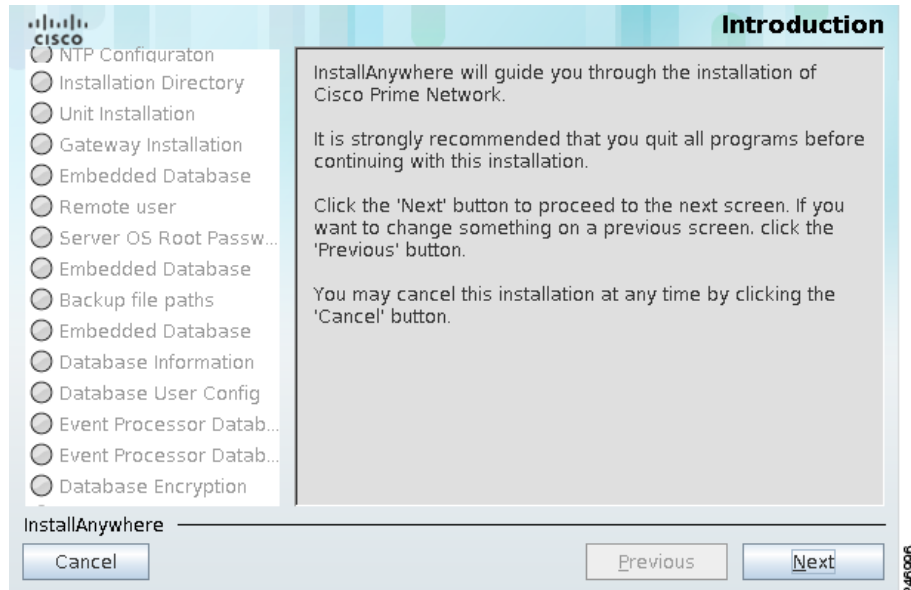
This section tells you how to install the Prime Network unit using the install wizard. To install the unit using the wizard:

Step 1 Launch the installer (`install.bin`) using the X client and enter the following details:

- Gateway hostname or IP address.
- Gateway username and password.

The install wizard launches and the Introduction window is displayed ([Figure 6-3](#)).

Figure 6-3 Cisco Prime Network Install Wizard



Step 2 Click **Next**. The Installation Setup window is displayed.

Step 3 In the Installation Setup window, do the following:

- a. Enter the name of the user account (*network user*) for the Cisco Prime Network application.



Note You must enter the same username that you used when you installed the gateway. (If the gateway and unit have different usernames, the unit will not start.)

- b. Select the Prime Network server type as Unit.

Step 4 Click **Next**. The Server OS Root Password window is displayed.

Step 5 In the Server OS Root Password window, enter the password of the OS root user.

Step 6 Click **Next**. The Installation Directory window is displayed.

Step 7 To change the default installation location in the Installation Directory window, click **Choose...** and select the preferred installation directory.



Note The default installation location is `/export/home/network user`, where *network user* is the operating system user account (username in [Step 3](#)) for the Prime Network application.

Step 8 After choosing the required installation directory, click **OK**, or click **Cancel** to return to the default installation location.

Step 9 Click **Next**. The Unit Installation window is displayed, as shown in [Figure 6-4](#).

Figure 6-4 Unit Installation Window

Step 10 Enter the fields in the Unit Installation window, as shown in [Table 6-5](#).

Table 6-5 Unit Installation Fields

Field	Enter..	Notes
Gateway IP Address	IP address of the gateway	Please make sure that the gateway is up and running.
Unit IP Address	IP address of the unit.	
Prime Network Application Admin User	The username for the Prime Network administrator.	Prime Network internal admin user, used for secure communication with the gateway.
Prime Network Application Admin Password	The password for the Prime Network administrator.	
Select the unit's work mode	Select Active Unit or Standby Unit as required.	
Unit Unique Name	Name of the unit.	
Units's Protection Group	Enter the protection group for the unit.	
Prime Network Main Schema Database IP address accessible from Prime Network Unit	IP address of the Prime Network main schema database.	This is required in case of incase of incompatible Gateway/Database interface types.
Prime Network EP Schema Database IP address accessible from Prime Network Unit	IP address of the Prime Network EP schema database.	

- Step 11** Click **Next**. The system configuration might take some time. The Pre-installation summary appears.
- Step 12** Click **Install** to start the Unit installation.
- Step 13** When the installation is complete, click **Finish**.
-

What's Next?

- (Optional) [Enabling the Network Discovery Feature, page 9-1](#). Use this section to automatically discover the devices that exist in the network.

