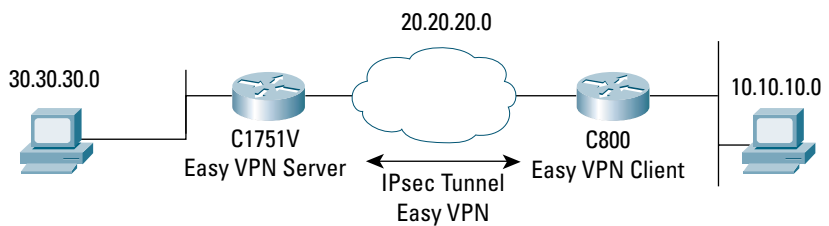


CONFIGURING CISCO IOS EASY VPN REMOTE WITH CLIENT MODE

Figure 1
 Network Diagram



INTRODUCTION

This document describes how to configure a router-to-router Easy VPN Solution, based on the Cisco Easy VPN Client and Cisco Easy VPN Server features. The sample configuration presented in this document uses Cisco 831 for the client and Cisco 1751 Router for the server. The Cisco Easy VPN negotiates tunnel parameters and establishes IPsec tunnels.

PREREQUISITES

The sample configuration of the router-to-router Easy VPN Solution is based on the following assumptions:

- The IP address at the Cisco Easy VPN Server is static.
- The IP address at the Cisco Easy VPN Client is dynamic.
- All traffic, including Internet traffic, from the Cisco Easy VPN Client is forwarded to the hub.
- Traffic from the remote host is forwarded after applying Network Address Translation/Port Address Translation (NAT/PAT).

COMPONENTS USED

The sample configuration uses the following releases of the software and hardware:

- Cisco 831 with Cisco IOS[®] Software Release 12.2(4)YA1 (C831-K9OSY6-M)
- Cisco 1751V with Cisco IOS Software Release 12.2(8)T (C1700-K9O3SV3Y7-M)

Figure 1 illustrates the network for the sample configuration.

The information presented in this document was created from devices in a specific lab environment. All of the devices started with a cleared (default) configuration. In a live network, it is imperative to understand the potential impact of any command before implementing it.

EASY VPN CONFIGURATIONS

The Cisco Easy VPN configuration implements the Cisco Unity Client protocol, which simplifies configuring the detailed information on the client router because most VPN parameters are defined at the VPN remote access server. The server can be a dedicated VPN device, such as a VPN 3000 concentrator or a Cisco PIX Firewall, or a Cisco IOS Software router that supports the Cisco Unity Client protocol. The sample configuration uses the Cisco 1751 for the Easy VPN Server.

This sample configuration also uses client mode on the remote Easy VPN Client. In client mode, the entire LAN behind the Easy VPN Client undergoes NAT to the mode config ip address that is pushed down by the Easy VPN Server. Cisco 831 forwards the Internet traffic to the Easy VPN Server, and denies any direct access to the Cisco 831 other than the encrypted traffic from the Easy VPN Server.

For additional information about configuring Easy VPN Client, refer to *Cisco IOS Easy VPN Client feature*.

CISCO 831 VPN ROUTER CONFIGURATION

```
version 12.2
no service pad
service timestamps debug uptime
service timestamps log uptime
no service password-encryption
!
hostname Cisco831
!
enable password cisco
!
username cisco password 0 cisco
ip subnet-zero
no ip domain-lookup
ip domain-name cisco.com
ip dhcp excluded-address 10.10.10.1
!
ip dhcp pool CLIENT
import all
network 10.10.10.0 255.255.255.0
default-router 10.10.10.1
option 150 ip 30.30.30.200
dns-server 30.30.30.60
!
ip ssh time-out 120
ip ssh authentication-retries 3
!
!
crypto ipsec client ezvpn hw-client
group hw-client-groupname key hw-client-password
mode client
peer 20.20.20.2
!
interface Ethernet0
description connected to BRANCH LAN
```

```

    ip address 10.10.10.1 255.255.255.0
    no cdp enable
    !
interface Ethernet1
    description connected to INTERNET
    ip address 20.20.20.1 255.255.255.0
    no cdp enable
    crypto ipsec client ezvpn hw-client
    !
ip classless
ip route 0.0.0.0 0.0.0.0 Ethernet1
ip route 30.30.30.0 255.255.255.0 Ethernet1
ip http server
ip pim bidir-enable
!
!
line con 0
    exec-timeout 120 0
    stopbits 1
line vty 0 4
    exec-timeout 0 0
    no login
    length 0
!
scheduler max-task-time 5000
end

```

CISCO 1751V VPN ROUTER CONFIGURATION

```

version 12.2
no service pad
service timestamps debug uptime
service timestamps log uptime
no service password-encryption
service internal
!
hostname Cisco1751
!
aaa new-model
!
!
aaa authorization network hw-client-groupname local
aaa session-id common
enable password cisco
!
memory-size iomem 15
clock timezone - 0 6
ip subnet-zero
no ip source-route
!
!
ip domain-name cisco.com
!
ip audit notify log
ip audit po max-events 100
!
crypto isakmp policy 1
    encr 3des

```

```

    authentication pre-share
    group 2
crypto isakmp client configuration address-pool local dynpool
!
crypto isakmp client configuration group hw-client-groupname
key hw-client-password
dns 30.30.30.10 30.30.30.11
wins 30.30.30.12 30.30.30.13
domain cisco.com
pool dynpool
!
!
crypto ipsec transform-set transform-1 esp-3des esp-sha-hmac
!
crypto dynamic-map dynmap 1
set transform-set transform-1
reverse-route
!
!
crypto map dynmap isakmp authorization list hw-client-groupname
crypto map dynmap client configuration address respond
crypto map dynmap 1 ipsec-isakmp dynamic dynmap
!
!
interface Ethernet0/0
description connected to INTERNET
ip address 20.20.20.2 255.255.255.0
half-duplex
no cdp enable
crypto map dynmap
!
interface FastEthernet0/0
description connected to HQ LAN
ip address 30.30.30.1 255.255.255.0
speed auto
no cdp enable
!
ip local pool dynpool 30.30.30.20 30.30.30.30
ip classless
ip route 0.0.0.0 0.0.0.0 Ethernet0/0
no ip http server
ip pim bidir-enable
!
!
no cdp run
!
line con 0
line aux 0
line vty 0 4
password cisco
!
end

```

VERIFYING THE RESULTS

This section provides information that can be used to confirm that configuration is working properly.

Verifying the Cisco 831 Status

```
Cisco831#show crypto ipsec clien ezvpn
Easy VPN Remote Phase: 2
Tunnel name : hw-client
Inside interface list: Ethernet0,
Outside interface: Ethernet1
Current State: IPSEC_ACTIVE
Last Event: SOCKET UP
Address: 30.30.30.20
Mask: 255.255.255.255
DNS Primary: 30.30.30.10
DNS Secondary: 30.30.30.11
NBMS/WINS Primary: 30.30.30.12
NBMS/WINS Secondary: 30.30.30.13
Default Domain: cisco.com
Cisco831#show crypto ipsec sa
Cisco831#show crypto ipsec sa
interface: Ethernet1
Crypto map tag: Ethernet1-head-0, local addr. 20.20.20.1
protected vrf:
local ident (addr/mask/prot/port): (30.30.30.20/255.255.255.255/0/0)
remote ident (addr/mask/prot/port): (0.0.0.0/0.0.0.0/0/0)
current_peer: 20.20.20.2:500
PERMIT, flags={origin_is_acl,}
#pkts encaps: 114, #pkts encrypt: 114, #pkts digest 114
#pkts decaps: 29, #pkts decrypt: 29, #pkts verify 29
#pkts compressed: 0, #pkts decompressed: 0
#pkts not compressed: 0, #pkts compr. failed: 0
#pkts not decompressed: 0, #pkts decompress failed: 0
#send errors 0, #recv errors 0
local crypto endpt.: 20.20.20.1, remote crypto endpt.: 20.20.20.2
path mtu 1500, media mtu 1500
current outbound spi: F20ADD52
inbound esp sas:
spi: 0xB7FFB8C1(3086989505)
transform: esp-3des esp-sha-hmac ,
in use settings ={Tunnel, }
slot: 0, conn id: 20, flow_id: 1, crypto map: Ethernet1-head-0
sa timing: remaining key lifetime (k/sec): (4499008/3229)
IV size: 8 bytes
replay detection support: Y
inbound ah sas:
inbound pcp sas:
outbound esp sas:
spi: 0xF20ADD52(4060798290)
transform: esp-3des esp-sha-hmac ,
in use settings ={Tunnel, }
slot: 0, conn id: 21, flow_id: 2, crypto map: Ethernet1-head-0
sa timing: remaining key lifetime (k/sec): (4499000/3228)
IV size: 8 bytes
replay detection support: Y
outbound ah sas:
outbound pcp sas:
```

Verifying the Cisco 1751 Status

```
Cisco1751#show crypto ipsec sa
interface: Ethernet0/0
  Crypto map tag: dynmap, local addr. 20.20.20.2
  protected vrf:
  local ident (addr/mask/prot/port): (30.30.30.0/255.255.255.0/0/0)
  remote ident (addr/mask/prot/port): (30.30.30.20/255.255.255.255/0/0)
  current_peer: 20.20.20.1:500
  PERMIT, flags={}
  #pkts encaps: 0, #pkts encrypt: 0, #pkts digest 0
  #pkts decaps: 13, #pkts decrypt: 13, #pkts verify 13
  #pkts compressed: 0, #pkts decompressed: 0
  #pkts not compressed: 0, #pkts compr. failed: 0
  #pkts not decompressed: 0, #pkts decompress failed: 0
  #send errors 0, #recv errors 0
  local crypto endpt.: 20.20.20.2, remote crypto endpt.: 20.20.20.1
  path mtu 1500, media mtu 1500
  current outbound spi: 239C766E
  inbound esp sas:
    spi: 0xE89E6649(3902694985)
    transform: esp-3des esp-sha-hmac ,
    in use settings ={Tunnel, }
    slot: 0, conn id: 200, flow_id: 1, crypto map: dynmap
    sa timing: remaining key lifetime (k/sec): (4458452/3335)
    IV size: 8 bytes
    replay detection support: Y
  inbound ah sas:
  inbound pcp sas:
  outbound esp sas:
    spi: 0x239C766E(597456494)
    transform: esp-3des esp-sha-hmac ,
    in use settings ={Tunnel, }
    slot: 0, conn id: 201, flow_id: 2, crypto map: dynmap
    sa timing: remaining key lifetime (k/sec): (4458454/3335)
    IV size: 8 bytes
    replay detection support: Y
  outbound ah sas:
  outbound pcp sas:
Cisco1751#show crypto isakmp sa
dst src state conn-id slot
20.20.20.2 20.20.20.1 QM_IDLE 1 0
Cisco1751#show crypto engine connections active
ID Interface IP-Address State Algorithm Encrypt Decrypt
1 Ethernet0/0 20.20.20.2 set HMAC_SHA+3DES_56_C 0 0
200 Ethernet0/0 20.20.20.2 set HMAC_SHA+3DES_56_C 0 538
201 Ethernet0/0 20.20.20.2 set HMAC_SHA+3DES_56_C 133 0
```

TROUBLESHOOTING THE CONFIGURATION

Certain **show** commands are supported by the *Output Interpreter Tool* (registered customers only), which analyzes **show** command output.

Note: Before issuing **debug** commands, see *Important Information about Debug Commands*.

- **debug crypto isakmp**—Displays errors during Phase 1.
- **debug crypto ipsec**—Displays errors during Phase 2.

- **debug crypto engine**—Displays information from the crypto engine.
- **debug ip your routing protocol**—Displays information about routing transactions of the routing protocol.
- **clear crypto connection connection-id [slot | rsm | vip]**—Terminates an encrypted session currently in progress. Encrypted sessions normally terminate when the session times out. Use the **show crypto cisco connections** command to see the connection-id value.
- **clear crypto isakmp**—Clears the Phase 1 security associations.
- **clear crypto sa**—Clears the Phase 2 security associations.

RELATED INFORMATION

- IPsec Support Page
- An Introduction to IP Security (IPsec) Encryption
- Cisco VPN Client Feature
- Cisco IOS Easy VPN Server
- Configuring IPSec Network Security
- Configuring Internet Key Exchange Security Protocol
- Command Lookup Tool (registered customers only)
- Technical Support—Cisco Systems



Corporate Headquarters
 Cisco Systems, Inc.
 170 West Tasman Drive
 San Jose, CA 95134-1706
 USA
www.cisco.com
 Tel: 408 526-4000
 800 553-NETS (6387)
 Fax: 408 526-4100

European Headquarters
 Cisco Systems International BV
 Haarlerbergpark
 Haarlerbergweg 13-19
 1101 CH Amsterdam
 The Netherlands
www-europe.cisco.com
 Tel: 31 0 20 357 1000
 Fax: 31 0 20 357 1100

Americas Headquarters
 Cisco Systems, Inc.
 170 West Tasman Drive
 San Jose, CA 95134-1706
 USA
www.cisco.com
 Tel: 408 526-7660
 Fax: 408 527-0883

Asia Pacific Headquarters
 Cisco Systems, Inc.
 168 Robinson Road
 #28-01 Capital Tower
 Singapore 068912
www.cisco.com
 Tel: +65 6317 7777
 Fax: +65 6317 7799

Cisco Systems has more than 200 offices in the following countries and regions. Addresses, phone numbers, and fax numbers are listed on the **Cisco Web site at www.cisco.com/go/offices**

Argentina • Australia • Austria • Belgium • Brazil • Bulgaria • Canada • Chile • China PRC • Colombia • Costa Rica • Croatia • Cyprus
 Czech Republic • Denmark • Dubai, UAE • Finland • France • Germany • Greece • Hong Kong SAR • Hungary • India • Indonesia • Ireland
 Israel • Italy • Japan • Korea • Luxembourg • Malaysia • Mexico • The Netherlands • New Zealand • Norway • Peru • Philippines • Poland
 Portugal • Puerto Rico • Romania • Russia • Saudi Arabia • Scotland • Singapore • Slovakia • Slovenia • South Africa • Spain • Sweden
 Switzerland • Taiwan • Thailand • Turkey • Ukraine • United Kingdom • United States • Venezuela • Vietnam • Zimbabwe

All contents are Copyright © 1992–2004 Cisco Systems, Inc. All rights reserved. Cisco, Cisco Systems, and the Cisco Systems logo are registered trademarks of Cisco Systems, Inc. and/or its affiliates in the United States and certain other countries.

All other trademarks mentioned in this document or Website are the property of their respective owners. The use of the word partner does not imply a partnership relationship between Cisco and any other company.
 (0403R) 204026_ETMG_SH_06.04