

# Managing Objects in Cisco EMF

---

Network elements being managed by CEMF are referred to as “managed objects”. These managed objects are represented in CEMF by icons. Different icons represent different managed objects, depending on the network elements being managed. These icons or objects are displayed in the different applications such as the Map Viewer and the Object Group Manager.

Tasks can be carried out on any managed objects within Cisco EMF. These tasks or functions that can be carried out on the managed objects are referred to as “services” on objects, and are easily accessed from the different applications including the Map Viewer (refer to Chapter 3, “Map Viewer”), the Event Browser (refer to Chapter 6, “Event Browser”), and the Object Group Manager (refer to Chapter 7, “Object Group Manager”).

You can select one or more objects and right click the right mouse button. This displays the list of services or actions available for that object in a pop up menu. The services available depend on the object’s type and on the user’s access privileges. Access to the features in the application is managed by Access Control, refer to Chapter 9, “User Access Control.”

---

**Note** If multiple objects are selected, only the services common to all the objects are available.

---

The following options are available on every object, as described in Chapter 3, “Map Viewer”:

- Rename Object
- Reparent Object(s)
- Remove Object(s)
- Add Object(s) to
- Open Object Configuration
- Get Object Group Membership.

The pop up menus available on selected objects also give the option to open Cisco EMF applications such as the Event Browser, Object Group Manager, or Element Management specific windows.

**Select all Children** is available as an option on a selected object in the Object Selector and Parent Selector windows (refer to the “Select all Children” section on page 10-8.)

## Context Sensitive Pop Up Menus

Context sensitive pop up menus are menus that are accessed by clicking the right mouse button over a managed object or group of managed objects. The services or options available in the pop up menu depend on the “context” of the managed object. For example, a pop up menu for a managed object representing a managed network element allows you to launch applications such as the Device Configuration, Event Browser, and Object Group Manager, while a pop up menu for an object representing a region offers different services.

Throughout Cisco EMF, you can access context sensitive pop up menus as follows:

**Step 1** Open the appropriate window to display the required network element.

**Step 2** Place the cursor over the element.

**Step 3** Click and hold the right mouse button.

A pop up menu is displayed. This menu details all of the options that can be accessed from the selected object. The options are split into functional groups. Each functional group is separated with a horizontal bar.

**Step 4** Move the cursor to the required service on the menu, then release the right mouse button.

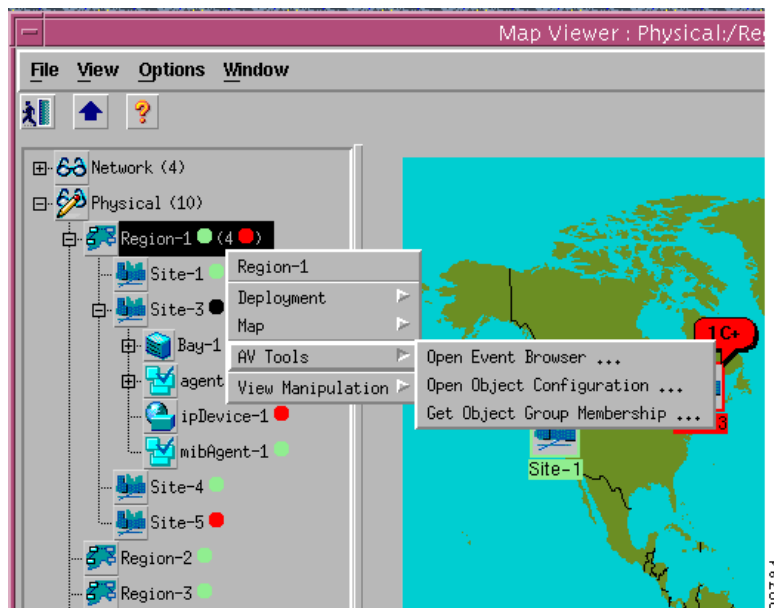
---

**Note** If a service has multiple options, an arrow is displayed beside it. If this service is highlighted, a second pop up menu appears, displaying the available services.

---

The selected application window is displayed.

**Figure 10-1** Example Pop Up Menu



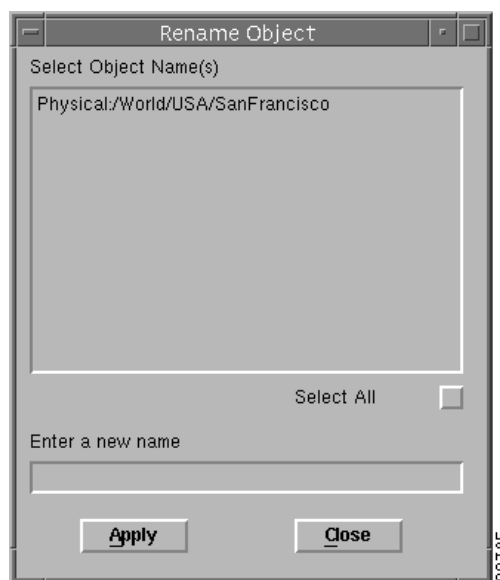
## Renaming an Object

An object can be located in more than one place in the network view. Each reference to the object has a name. The name may be the same in all locations, or it can be different. For example, an object may have a name which relates to its physical location (`San Francisco`) and another name which relates to its relation to other objects in a hierarchy (`obj1`). To rename an object, proceed as follows:

**Step 1** Right click on the object(s) you want to rename. From the pop up menu, select **Rename Object**.

A window similar to Figure 10-2 is displayed. All references to the selected object are shown.

**Figure 10-2** Rename Object Window



**Step 2** Select a single object name or multiple object names, or click the **Select All** button to select all the names in the list. Enter the new name in the prompt.

**Step 3** Click **Apply** to proceed or **Close** to cancel.

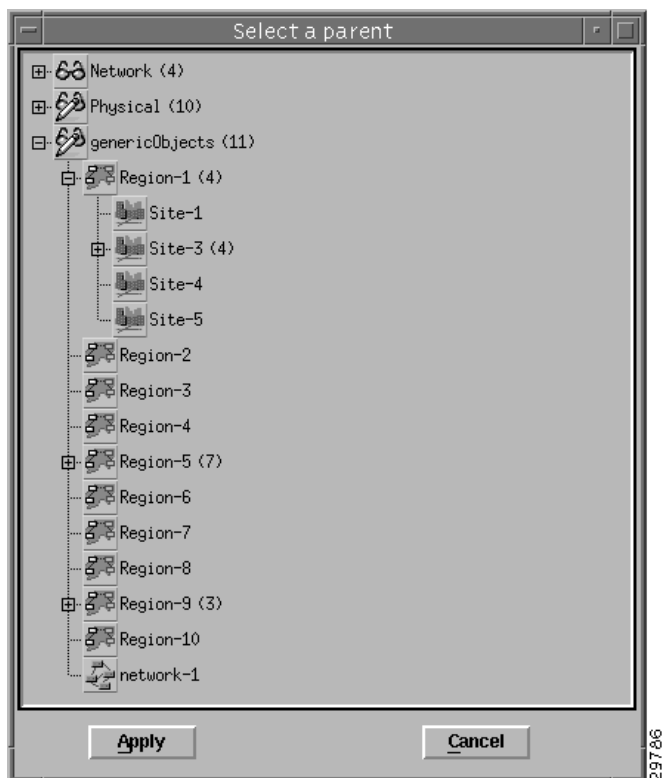
## Moving Objects Around the Network Hierarchy

You may want to move an object or several objects to a different position in the hierarchy. For example, you may want to move the `Main Office` site from the `USA` to `Europe`. Before the move, the `Main Office` has the parent `USA` and after the move, it will have the parent `Europe`. The service that allows you to move one or more objects is called **Reparent Object**. To move object(s), proceed as follows:

**Step 1** Right click on the object(s) you want to reparent. From the pop up menu, select **Reparent Object(s)**.

A window similar to Figure 10-3 is displayed.

**Figure 10-3**    **Select a Parent Window**



**Step 2**    Select the new parent from the hierarchy (in this example, select `Europe`).

**Step 3**    Click **Apply** to proceed or **Close** to cancel.

The position of the selected object in the view is moved to reflect the change.

## Removing Objects

Any managed object can be removed from Cisco EMF as long as you have the correct user access. To remove objects, proceed as follows:

**Step 1**    Right click on the object(s) you want to remove. From the pop up menu, select **Remove Object**.

**Step 2**    A dialog box asking `Are you sure you want to remove the selected objects?` is displayed. Click **Yes** to continue or **No** to cancel.

The object(s) is removed.

## Adding Objects

This option allows you to add a reference to a selected object to another position in the hierarchy.

**Step 1**    Right click on the objects you want to add to another position. From the pop up menu, select **Add Object(s) to**.

A window similar to Figure 10-3 is displayed.

- Step 2** Select the new position, below which, it will be added in the hierarchy.
- Step 3** Click **Apply** to proceed or **Close** to cancel.

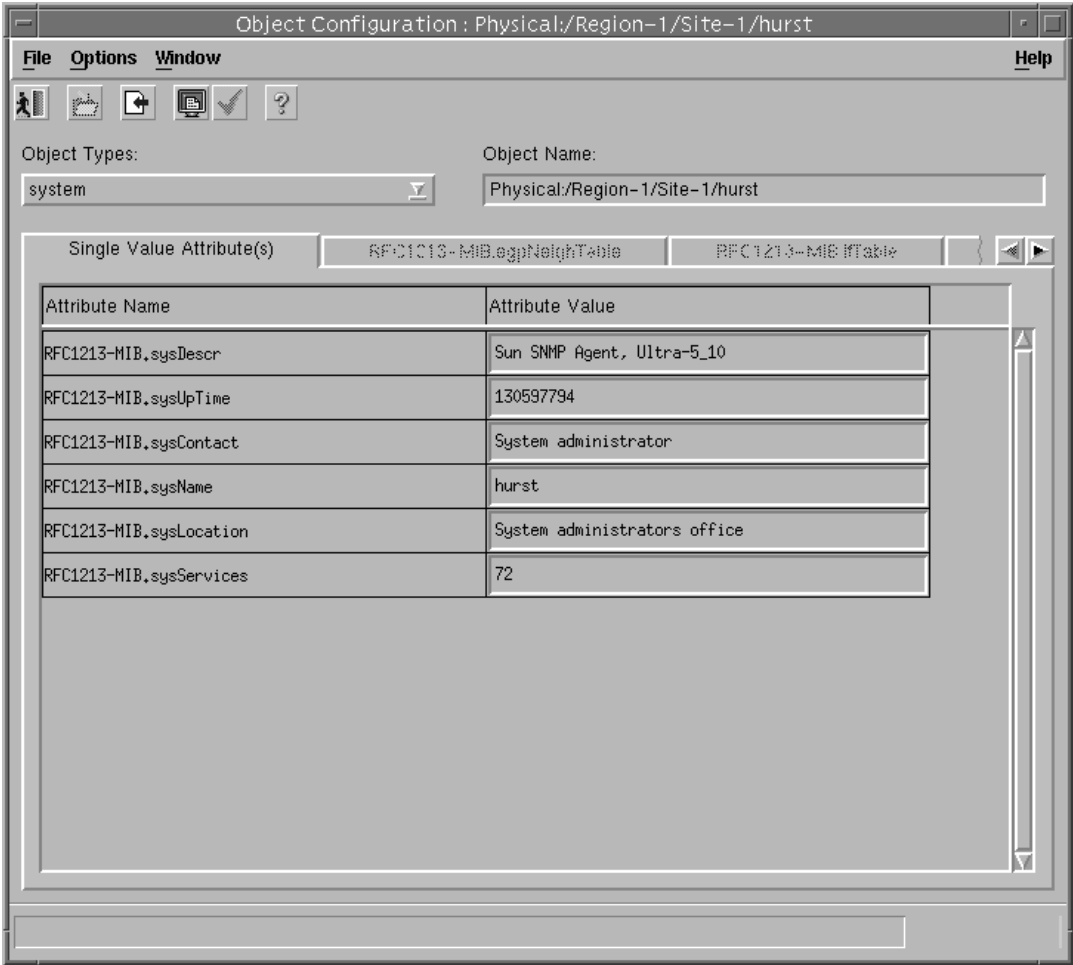
The reference to the object is shown below the new position in the hierarchy.

## Viewing and Opening Object Configuration

All managed objects have a configuration that is particular to the network element which it represents. You can view and then edit this configuration by selecting the object in the Map Viewer as follows:

- Step 1** Right click on the object(s) you want to configure or view the configuration. From the pop up menu, select **Open Object Configuration**.  
The Object Configuration window, shown in Figure 10-4 is displayed.

**Figure 10-4 Object Configuration Window**



**Note** The **Object Name** box gives the location of the selected object in the current view.

From this window, you can:

- change or set attributes of an object
- view attributes of an object
- acknowledge value changes on an object.

To change or set configuration attributes of a selected object:

**Step 2** In the Object Configuration window, select the type of managed object from the **Object Types** drop down list, for example IP Manageable or SNMP.

---

**Note** The number of Object Types listed depends on the selected managed object.

---

**Step 3** Each Object Type (such as IP Manageable and SNMP) has its own set of attributes which are displayed below the object type. Locate the relevant attributes listed under the **Single Value Attribute(s)** tab. Depending on the attribute, you can edit the value manually, or select one of the option's values allowed for that attribute.

**Step 4** You can change the value of the attribute by one of the following methods:

- (a) Delete the value in the data entry box and then enter the new value.
- (b) Select the drop down menu and highlight the required value or click the **Goto Table** button beside the relevant attribute. The window now displays the **Table** tab. Change the values as required within the table.

---

**Note** To return to the **Single Value Attribute(s)** tab, select **First Page** from the **Actions** menu.

---

**Step 5** From the **File** menu, select **Save**.

---

**Note** You must save any changes before closing the window or the changes are discarded.

---

**Step 6** From the **File** menu, select **Close** or press **Ctrl + W**.

You are returned to your original application window.

---

**Note** Changes may occur to the attribute values of a managed object within Cisco EMF. If attributes have changed, they are shown in the data entry boxes on the Object Configuration window as blue text. You can acknowledge that the changes have been seen by selecting **Acknowledge** from the **Actions** menu.


---

## Checking if an Object is in an Object Group

Objects can be members of one or more object groups (refer to Chapter 7, “Object Group Manager.”) At any time, you can investigate or check to see if the object is a member of the object group. To check which object group an object is a member of, proceed as follows:

**Step 1** Right click on the selected object(s) you want to discover the Object Group Membership for. From the pop up menu, select **Get Object Group Membership**.

The Object Group List window, which lists the Object Group(s) the selected object group belongs to, is displayed.

**Step 2** Select **Close** from the **File** menu, or click the  icon on the toolbar to return to the previous window.

## Editing Maps

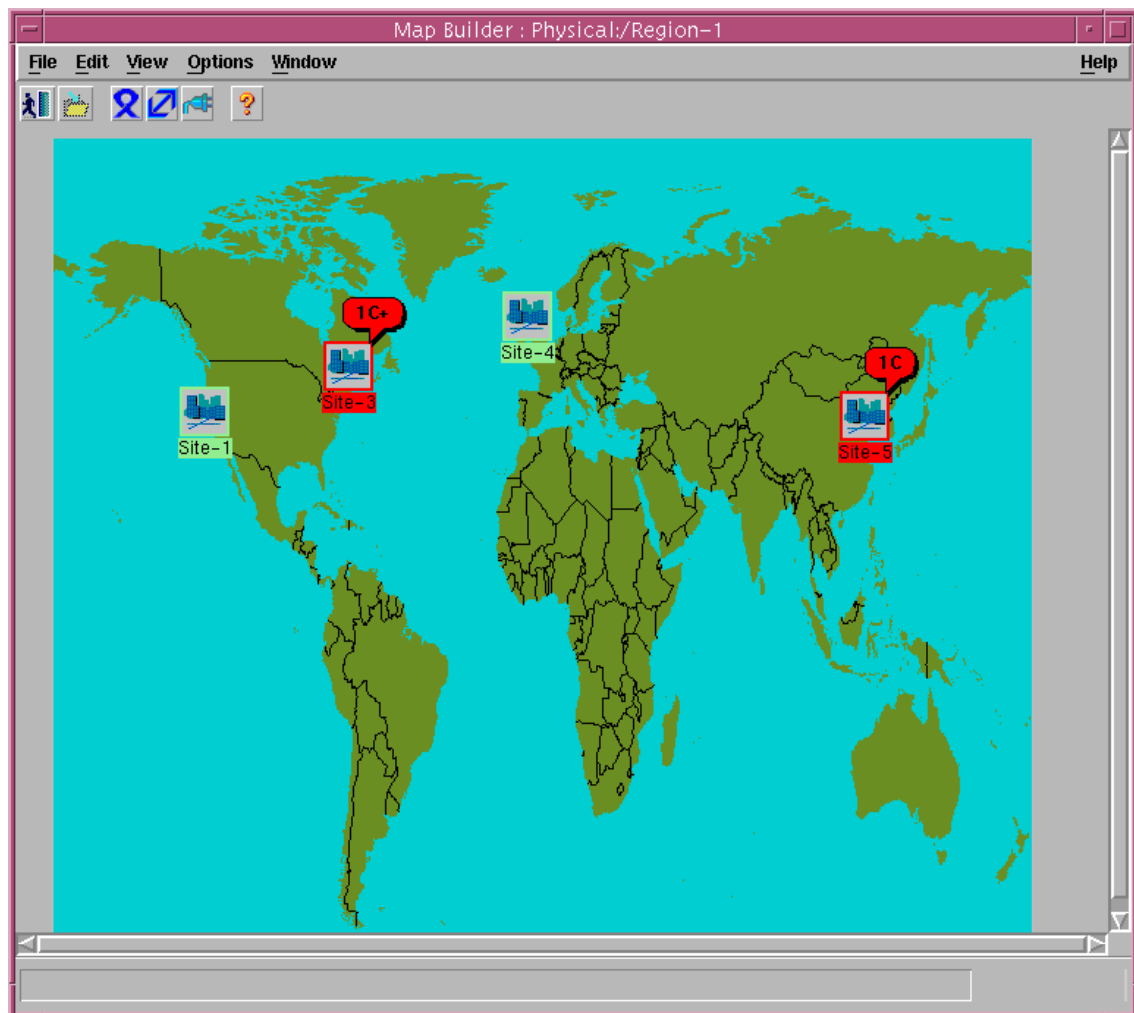
The Map View application shows several views of the network. These maps can be changed or edited to reflect changes in the network. For example, new objects representing new sites or regions may be added to the map. The Map Builder is used to carry out these changes. The Map Builder window is launched from the **Edit Map** service on the pop up menu available on a selected object. The path of the selected object is shown as part of the window’s title. The associated Class Palette is also opened. Refer to Figure 10-5 for more information.

---

**Note** When a map is being edited, it is locked. Only one user can edit a map at any one time. Any other user can view the map, however, it does not show the new changes. If another user attempts to edit the map, the Map Builder window appears, as well as a dialog box, which informs them the map is locked. Click **Ok**. The Map Builder window closes.

---

Figure 10-5 Map Builder Window



## Deployment

This service provides the **Deploy Objects** and **Delete Objects** deployment options.

Select the **Deploy Objects** option to open a Deployment Wizard template and proceed with deployment of the selected object(s). Refer to Chapter 4, "Deployment Wizard," for more information about Cisco EMF Deployment.

Select the **Delete Objects** option to delete the selected object.

## Select all Children

**Select all Children** is available from a selected parent object in the Object Selector and Add Parent windows.