



Using On-Demand Address Pools

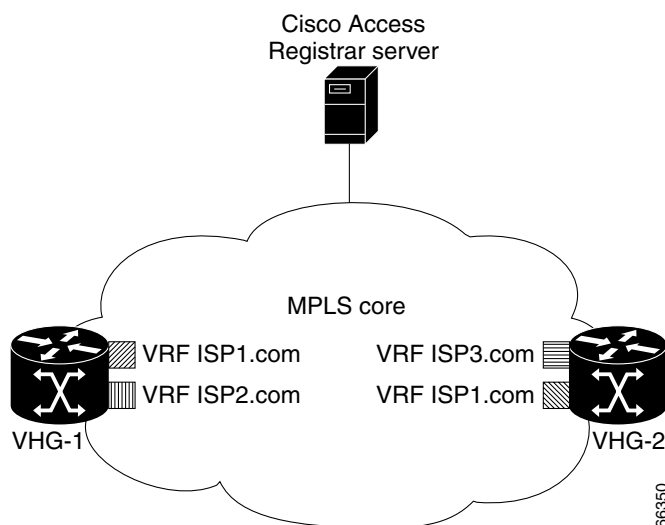
Cisco Access Registrar provides support for On-Demand Address Pools (ODAP). Using ODAP, the Cisco AR server manages pools of addresses. Each pool is divided into subnets of various sizes, and the Cisco AR server assigns the subnets to virtual home gateways (VHG) and Provider Edge (PE) routers. The VHG/PE router has one On-Demand Address Pool configured for each VPN supported by that VHG/PE.

Cisco Access Registrar has been enhanced to make ODAP functionality more accessible and to enable ODAP requests and normal user authentication to occur on the same Cisco Access Registrar server. To achieve this functionality, a new Cisco vendor script **CiscoWithODAPIncomingScript** was written to direct ODAP requests to particular services and session managers. **CiscoWithODAPIncomingScript** also provides the same functionality as the previous **CiscoIncomingScript**.

Additionally, Cisco Access Registrar has a new vendor type, **CiscoWithODAP** which references **CiscoWithODAPIncomingScript** as its IncomingScript and references the existing script, **CiscoOutgoingScript**, as its Outgoing Script.

[Figure 11-1](#) shows a simple MPLS VPN network with two VHG/PE routers, VHG-1 and VHG-2. The Cisco AR server allocates IP subnets to the VHGs by way of VRFs which contain the subnets and addresses (address space) available.

Figure 11-1 MPLS Core



In Cisco AR, the VRFs are configured as users in an ODAP-users list under **/Radius/UserLists**. The VRF name is set in IOS for the ODAP pool. When a VRF requests a pool of addresses, Cisco AR directs the request to a Session-Manager configured with the name **odap-<VRF name>**. Cisco AR also directs ODAP accounting requests to the service **odap-accounting**.

In the example network shown in [Figure 11-1](#), the VRFs are configured with the following address spaces:

- VRF-ISP1.com—consists of the address range 10.255.0.0 - 10.255.255.255 divided among the following subnets:
 - 10.255.0.0/24
 - 10.255.1.0/24
 - ...
 - 10.255.255.0/24
- VRF-ISP2.com—consists of the address ranges 10.0.0.0 - 10.10.255.255 and 10.255.0.0 - 10.255.10.255 divided among the following subnets:
 - 10.0.0.0/16
 - 10.1.0.0/16
 - ...
 - 10.10.0.0/16

and:

- 10.255.0.0/24
- 10.255.1.0/24
- ...
- 10.255.10.0/24



Note VRF-ISP2.com requires two ResourceManagers because it has subnets of two different sizes.

- VRF-ISP3.com—consists of the address range 172.21.0.0 - 172.21.255.255 divided among the following subnets:
 - 172.21.0.0/18
 - 172.21.64.0/18
 - 172.21.128.0/18

and

- 172.21.192.0/24
- 172.21.193.0/24
- ...
- 172.21.255.0/24



Note VRF-ISP3.com requires two ResourceManagers because it also has subnets of two different sizes.

Cisco-Incoming Script

Cisco Access Registrar 1.7R1 includes a new Cisco AR script, **CiscoWithODAPIncomingScript**, that makes ODAP functionality more accessible. The script eases the configuration required to enable ODAP requests and normal user authentication to occur on the same Cisco Access Registrar server.

CiscoWithODAPIncomingScript also provides the functionality of the original **CiscoIncomingScript**.

If the Cisco AR server receives an ODAP request, the server sets the Session-Key from the AcctSessionID and sets the services and session managers.

If the Cisco AR server receives a non-ODAP request, other scripts, rules or policies that you might already have in place on the Cisco AR server handle these requests.

How the Script Works

The following describes how the script **CiscoWithODAPIncomingScript** works.

1. The script examines the incoming NAS-Identifier sent by the client (VHG). If the NAS-Identifier does not equal *odap-dhcp* then this request is not an ODAP request. Since this is not an ODAP request, the script does not do any more ODAP-specific processing and just calls **CiscoIncomingScript** to allow that script to process the request. If this is an ODAP request, this script removes the NAS-Identifier attribute because it is no longer needed.
2. The script sets the Authentication-Service and the Authorization-Service to *odap-users*, and it sets the Accounting-Service to *odap-accounting*.
3. The Cisco AR server sends the request to the appropriate Session Manager based on the username. Session Managers with *odap-<username>* must be created and configured in Cisco AR.
4. The script then uses Session IDs to identify each ODAP request. The script uses the Acct-Session-Id attribute as the Session-Key.

CiscoWithODAPIncomingScript

The following is a Tcl script example of the script **CiscoWithODAPIncomingScript**.



Note

CiscoWithODAPIncomingScript is written in C language. This example script is more easily understood in Tcl.

```
proc CiscoWithODAPIncomingScript {request response environ} {
    set RequestType [ $environ get Request-Type ]

    if { [ string compare $RequestType "Access-Request" ] == 0 ||
        [ string compare $RequestType "Accounting-Request" ] == 0 } {

        set NasID [ $request get NAS-Identifier ]

        if { [ string compare $NasID "odap-dhcp" ] == 0 } {
```

```

# Remove the NAS-Identifier - it has done it's job
$request remove NAS-Identifier

set UserName [ $enviro get User-Name ]
if { [ string length $UserName ] == 0 } { set UserName [ $request get User-Name ] }

# ODAP SUBNET ASSIGNMENT
$enviro put Authentication-Service "odap-users"
$enviro put Authorization-Service "odap-users"
$enviro put Accounting-Service "odap-accounting"
$enviro put Session-Manager "odap-$UserName"

set AcctSessionId [ $request get Acct-Session-Id ]
if { [ string length $AcctSessionId ] != 0 } { $enviro put Session-Key $AcctSessionId
} else {
$enviro log LOG_ERROR "Missing Acct-Session-Id attribute in request-unable to set Session-Key"
}
}
}
CiscoIncomingScript $request $response $enviro
}

```

**Note**

The final line in the example above is not how the script really works because a Tcl script can't call a C script. This is one reason why **CiscoWithODAPIncomingScript** was written in C.

Vendor Type CiscoWithODAP

Cisco Access Registrar 1.7R1 includes a new vendor type, **CiscoWithODAP**. You must configure any Clients that might forward ODAP requests to the Cisco AR server as being of Vendor **CiscoWithODAP**.

This vendor type references the new script, **CiscoWithODAPIncomingScript**, as its IncomingScript and references the existing script, CiscoOutgoingScript, as its OutgoingScript.

After setting Vendor to **CiscoWithODAP**, ODAP requests are directed to the AA service, set to **odap-users**, the accounting service is set to **odap-accounting**, and the Session Manager is set to **odap-username**, where username is filled from the request. The username received in the request is a VRF name, the request is directed to the appropriate Session Manager.

Configuring Cisco Access Registrar to Work with ODAP

This section provides information about how to configure Cisco AR to work with ODAP.

Configuration Summary

This section provides the steps required to configure Cisco AR to work with ODAP. For detailed information about configuring Cisco AR to work with ODAP, refer to the following section, [Detailed Configuration](#).

1. Create and configure an ODAP-users UserList
All ODAP users are configured under this UserList.
2. Add all ODAP users to the ODAP-users UserList

- Username must be of the form `<vrf name>` with the `AllowAnonymousPassword` property set to `TRUE`.
3. Create and configure a service for ODAP-users
 4. Create and configure an ODAP accounting service
Set the accounting service Type to *file* and FilenamePrefix *odap-accounting*.
 5. Create a Session Manager for each of the VRFs
There must be a separate Session Manager for each VRF pool.
 6. Create and configure Resource Managers to be referenced by the Session Managers
Subnet pools of different sizes (different subnet masks) require separate Resource Managers.
 7. Configure the Session Managers with the Resource Managers
 8. Configure any Clients that might send ODAP requests to Vendor type `CiscoWithODAP`
 9. Save your configuration

Detailed Configuration

The following steps provide a detailed description of configuring Cisco Access Registrar to work with ODAP.

Setting Up an ODAP UserList

- Step 1** Create a UserList for ODAP users.

```
--> cd /radius/userlists

[ //localhost/Radius/UserLists ]
  Entries 1 to 1 from 1 total entries
  Current filter: <all>

  Default/

--> add odap-users

Added odap-users
```

Adding ODAP Users

- Step 2** Add the ODAP users to the ODAP UserList and set the `AllowAnonymousPassword` property to `TRUE`.
Each user is a VRF name set for each ODAP client.

```
[ //localhost/Radius/UserLists/odap-users ]

  Entries 0 to 0 from 0 total entries
  Current filter: <all>

  Name = odap-users
  Description =

--> add vrf-ISP1.com
```

```

Added vrf-ISP1.com

--> add vrf-ISP2.com

Added vrf-ISP2.com

--> add vrf-ISP3.com

Added vrf-ISP3.com

--> ls

[ //localhost/Radius/UserLists/odap-users ]
  Entries 1 to 3 from 3 total entries
  Current filter: <all>

  Name = odap-users
  Description =
  vrf-ISP1.com/
  vrf-ISP2.com/
  vrf-ISP3.com/

```

Step 3 Set the AllowNullPassword property to TRUE for each ODAP user.

```

--> cd vrf-ISP2.com

[ //localhost/Radius/UserLists/odap-users/vrf-ISP2.com ]
  Name = vrf-ISP2.com
  Description =
  Password =
  Enabled = TRUE
  Group~ =
  BaseProfile~ =
  AuthenticationScript~ =
  AuthorizationScript~ =
  UserDefined1 =
  AllowNullPassword = FALSE

--> set AllowNullPassword TRUE

```

Setting Up an ODAP-Users Service

Step 4 Add and configure a service for ODAP Users.

```

--> cd /radius/services

[ //localhost/Radius/Services ]
  Entries 1 to 2 from 2 total entries
  Current filter: <all>

  local-file/
  local-users/

--> add odap-users

```

```
Added odap-users

--> cd odap-users

[ //localhost/Radius/Services/odap-users ]
  Name = odap-users
  Description =
  Type =
  IncomingScript~ =
  OutgoingScript~ =

--> set type local

Set Type local

--> set userlist odap-users

Set UserList odap-users

--> ls

[ //localhost/Radius/Services/odap-users ]
  Name = odap-users
  Description =
  Type = local
  IncomingScript~ =
  OutgoingScript~ =
  OutagePolicy~ = RejectAll
  OutageScript~ =
  UserList = odap-users
```

Setting Up an ODAP Accounting Service

Step 5 Add and configure an ODAP accounting service.

```
--> cd /radius/services

[ //localhost/Radius/Services ]
  Entries 1 to 3 from 3 total entries
  Current filter: <all>

  local-file/
  local-users/
  odap-users/

--> add odap-accounting

Added odap-accounting

--> cd odap-accounting

[ //localhost/Radius/Services/odap-accounting ]
  Name = odap-accounting
  Description =
  Type =
  IncomingScript~ =
  OutgoingScript~ =
```

```

--> set type file

Set Type file

--> ls

[ //localhost/Radius/Services/odap-accounting ]
  Name = odap-accounting
  Description =
  Type = file
  IncomingScript~ =
  OutgoingScript~ =
  OutagePolicy~ = RejectAll
  OutageScript~ =
  FilenamePrefix = accounting
  MaxFileSize = "10 Megabytes"
  MaxFileAge = "1 Day"
  RolloverSchedule =

--> set FilenamePrefix odap-accounting

Set Filenameprefix odap-accounting

```

Adding Session Managers

Step 6 Create one Session Manager for each of the VRF pools.

Create one Session Manager for each of the users you specify in the odap-users UserList. The Session Managers must be called odap-VRF_name to meet the requirements of CiscoWithODAPIncomingScript.

```

--> cd /radius/sessionmanagers

[ //localhost/Radius/SessionManagers ]
  Entries 1 to 1 from 1 total entries
  Current filter: <all>

  session-mgr-1/

--> add odap-vrf-ISP1.com

Added odap-vrf-ISP1.com

--> add odap-vrf-ISP2.com

Added odap-vrf-ISP2.com

--> add odap-vrf-ISP3.com

Added odap-vrf-ISP3.com

```

Setting Up Resource Managers

Step 7 Set up subnet-dynamic Resource Managers that are to be referenced by the Session Managers.

Session Managers can manage multiple Resource Managers. One or more subnet pools can be set up of varying sizes to allocate the ranges of subnet addresses you have available. Subnets of different sizes require different Resource Managers.

```
--> cd /radius/resourcemanagers
```

```
[ //localhost/Radius/ResourceManagers ]
  Entries 1 to 5 from 5 total entries
  Current filter: <all>
```

```
  IPA-Pool/
  IPA-Pool-2/
  IPX-Pool/
  Per-Group/
  Per-User/
```

```
--> add odap-vrf-ISP1.com
```



Note The names of Resource Managers do not have to be related to VRFs.

```
Added odap-vrf-ISP1.com
```

```
--> cd odap-vrf-ISP1.com
```

```
[ //localhost/Radius/ResourceManagers/odap-vrf-ISP1.com ]
  Name = odap-vrf-ISP1.com
  Description =
  Type =
```

```
--> set type subnet-dynamic
```

```
Set Type subnet-dynamic
```

```
--> ls
```

```
[ //localhost/Radius/ResourceManagers/odap-vrf-ISP1.com ]
  Name = odap-vrf-ISP1.com
  Description =
  Type = subnet-dynamic
  NetMask =
  SubnetAddresses/
```

```
-> set netmask 255.255.255.0
```

```
Set NetMask 255.255.255.0
```

```
-> cd subnetaddresses
```

```
[ //localhost/Radius/ResourceManagers/odap-vrf-ISP1.com/SubnetAddresses ]
  Entries 0 to 0 from 0 total entries
  Current filter: <all>
```

```
--> add 10.255.0.0-10.255.255.255
```

```
Added 10.255.0.0-10.255.255.255
```

**Note**

Two Resource Managers are required for VRF-ISP3.com and VRF-ISP2.com because their address spaces are made up of subnets of the different sizes.

```
--> cd /radius/resourcemanagers
```

```
[ //localhost/Radius/ResourceManagers ]
  Entries 1 to 5 from 5 total entries
  Current filter: <all>
```

```
  IPA-Pool/
  IPA-Pool-2/
  IPX-Pool/
  odap-vrf-ISP1.com/
  Per-Group/
  Per-User/
```

```
--> add odap-vrf-ISP3-a.com
```

```
Added odap-vrf-ISP3-a.com
```

```
--> cd odap-vrf-ISP3-a.com
```

```
[ //localhost/Radius/ResourceManagers/odap-vrf-ISP3-a.com ]
  Name = odap-vrf-ISP3-a.com
  Description =
  Type =
```

```
--> set type subnet-dynamic
```

```
Set Type subnet-dynamic
```

```
--> ls
```

```
[ //localhost/Radius/ResourceManagers/odap-vrf-ISP3-a.com ]
  Name = odap-vrf-ISP3-a.com
  Description =
  Type = subnet-dynamic
  NetMask =
  SubnetAddresses/
```

```
-> set netmask 255.255.192.0
```

```
Set NetMask 255.255.192.0
```

```
-> cd subnetaddresses
```

```
[ //localhost/Radius/ResourceManagers/odap-vrf-ISP3-a.com /SubnetAddresses ]
  Entries 0 to 0 from 0 total entries
  Current filter: <all>
```

```
--> add 171.21.0.0-172.21.191.255
```

```
Added 172.21.0.0-172.21.191.255

-> cd /radius/resourcemanagers
[ //localhost/Radius/ResourceManagers ]
  Entries 1 to 10 from 10 total entries
  Current filter: <all>

  IPA-Pool/
  IPA-Pool-2/
  IPX-Pool/
  odap-vrf-ISP1.com/
  odap-vrf-ISP3-a.com /
  Per-Group/
  Per-User/

--> add odap-vrf-ISP3-b.com

Added odap-vrf-ISP3-b.com

--> cd odap-vrf-ISP3-b.com

[ //localhost/Radius/ResourceManagers/odap-vrf-ISP3-b.com ]
  Name = odap-vrf-ISP3-b.com
  Description =
  Type =

--> set type subnet-dynamic

Set Type subnet-dynamic

--> ls

[ //localhost/Radius/ResourceManagers/odap-vrf-ISP3-b.com ]
  Name = odap-vrf-ISP3-b.com
  Description =
  Type = subnet-dynamic
  NetMask =
  SubnetAddresses/

-> set netmask 255.255.255.0

Set NetMask 255.255.255.0

-> cd subnetaddresses

[ //localhost/Radius/ResourceManagers/odap-vrf-ISP3-b.com /SubnetAddresses ]
  Entries 0 to 0 from 0 total entries
  Current filter: <all>

--> add 172.21.191.0-172.21.255.255

Added 172.21.191.0-172.21.255.255

-> cd /radius/resourcemanagers
[ //localhost/Radius/ResourceManagers ]
  Entries 1 to 10 from 10 total entries
```

```

Current filter: <all>

IPA-Pool/
IPA-Pool-2/
IPX-Pool/
odap-vrf-ISP1.com/
odap-vrf-ISP3-a.com /
odap-vrf-ISP3-b.com /
Per-Group/
Per-User/

--> add odap-vrf-ISP2-a.com

Added odap-vrf-ISP2-a.com

--> cd odap-vrf-ISP2-a.com

[ //localhost/Radius/ResourceManagers/odap-vrf-ISP2-a.com ]
  Name = odap-vrf-ISP2.com
  Description =
  Type =

--> set type subnet-dynamic

Set Type subnet-dynamic

--> ls

[ //localhost/Radius/ResourceManagers/odap-vrf-ISP2-a.com ]
  Name = odap-vrf-ISP2-a.com
  Description =
  Type = subnet-dynamic
  NetMask =
  SubnetAddresses/

-> set netmask 255.255.0.0

Set NetMask 255.255.0.0

-> cd subnetaddresses

[ //localhost/Radius/ResourceManagers/odap-vrf-ISP2-a.com /SubnetAddresses ]
  Entries 0 to 0 from 0 total entries
  Current filter: <all>

--> add 10.0.0.0-10.10.255.255

Added 10.0.0.0-10.255.255.255

-> cd /radius/resourcemanagers

[ //localhost/Radius/ResourceManagers ]
  Entries 1 to 10 from 10 total entries
  Current filter: <all>

IPA-Pool/
IPA-Pool-2/
IPX-Pool/
odap-vrf-ISP1.com/

```

```

odap-vrf-ISP3-a.com /
odap-vrf-ISP3-b.com /
odap-vrf-ISP2-a.com /
Per-Group/
Per-User/

--> add odap-vrf-ISP2-b.com

Added odap-vrf-ISP2-b.com

--> cd odap-vrf-ISP2-b.com

[ //localhost/Radius/ResourceManagers/odap-vrf-ISP2-b.com ]
Name = odap-vrf-ISP2-b.com
Description =
Type =

--> set type subnet-dynamic

Set Type subnet-dynamic

--> ls

[ //localhost/Radius/ResourceManagers/odap-vrf-ISP2-b.com ]
Name = odap-vrf-ISP2-b.com
Description =
Type = subnet-dynamic
NetMask =
SubnetAddresses/

-> set netmask 255.255.255.0

Set NetMask 255.255.255.0

-> cd subnetaddresses

[ //localhost/Radius/ResourceManagers/odap-vrf-ISP2-b.com /SubnetAddresses ]
Entries 0 to 0 from 0 total entries
Current filter: <all>

--> add 10.255.0.0-10.255.10.255

Added 10.255.0.0-10.255.10.255

```

Configuring Session Managers



Note

It is not necessary to configure Session Managers in two instances. All SessionManager configuration can be done at one time before configuring the Resource Managers.

Step 8

Configure the Session Managers to be referenced by the Resource Managers.

```
--> cd/radius/sessionmanagers
```

```

[ //localhost/Radius/SessionManagers ]
  Entries 1 to 4 from 4 total entries
  Current filter: <all>

  odap-vrf-ISP1.com/
  odap-vrf-ISP2.com/
  odap-vrf-ISP3.com/
  session-mgr-1/

--> cd odap-vrf-ISP2.com

[ //localhost/Radius/SessionManagers/odap-vrf-ISP2.com ]
  Name = odap-vrf-ISP2.com
  Description =
  AllowAccountingStartToCreateSession = FALSE
  ResourceManagers/

--> cd resourcemanagers

--> set 1 odap-vrf-ISP2-a.com

Set 1 odap-vrf-ISP2-a.com

--> set 2 odap-vrf-ISP2-b.com

Set 2 odap-vrf-ISP2-b.com

--> cd/radius/sessionmanagers

[ //localhost/Radius/SessionManagers ]
  Entries 1 to 4 from 4 total entries
  Current filter: <all>

  odap-vrf-ISP1.com/
  odap-vrf-ISP2.com/
  odap-vrf-ISP3.com /
  session-mgr-1/

--> cd odap-vrf-ISP3.com

[ //localhost/Radius/SessionManagers/odap-vrf-ISP3.com ]
  Name = odap-vrf-ISP3.com
  Description =
  AllowAccountingStartToCreateSession = FALSE
  ResourceManagers/

--> cd resourcemanagers

--> set 1 odap-vrf-ISP3-a.com

Set 1 odap-vrf-ISP3-a.com

--> set 2 odap-vrf-ISP3-b.com

Set 2 odap-vrf-ISP3-b.com

--> cd/radius/sessionmanagers

```

```

[ //localhost/Radius/SessionManagers ]
  Entries 1 to 4 from 4 total entries
  Current filter: <all>

  odap-vrf-ISP1.com/
  odap-vrf-ISP2.com/
  odap-vrf-ISP3.com/
  session-mgr-1/

--> cd odap-vrf-ISP1.com

[ //localhost/Radius/SessionManagers/odap-vrf-ISP1.com ]
  Name = odap-vrf-ISP1.com
  Description =
  AllowAccountingStartToCreateSession = FALSE
  ResourceManagers/

--> cd resourcemanagers

--> set 1 odap-vrf-ISP1.com

Set 1 odap-vrf-ISP1.com

```

Configure Clients

- Step 9** For any client that might forward ODAP requests to the Cisco AR server, set the Vendor property to CiscoWithODAP.

```

--> cd /radius/clients

[ //localhost/Radius/Clients ]
  Entries 1 to 2 from 2 total entries
  Current filter: <all>

  localhost/
  vhg-1/
  vhg-2/

--> cd vhg-1

[ //localhost/Radius/Clients/vhg-1 ]
  Name = vhg-1
  Description =
  IPAddress = 209.165.200.225
  SharedSecret = secret
  Type = NAS
  Vendor =
  IncomingScript~ =
  OutgoingScript~ =
  UseDNIS = FALSE
  DeviceName = a_name
  DevicePassword = password

--> set vendor CiscoWithODAP

Set Vendor CiscoWithODAP

```

Save Your Configuration

Step 10 After completing the configuration, save your changes.

```
--> save
```

```
Validating //localhost...  
Saving //localhost...
```
