

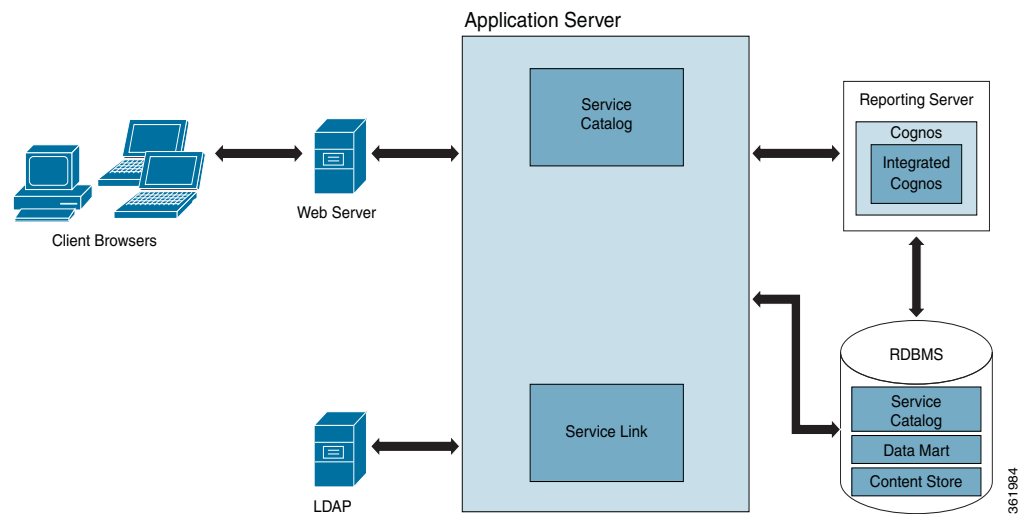


Installation Overview

Deployment Topology

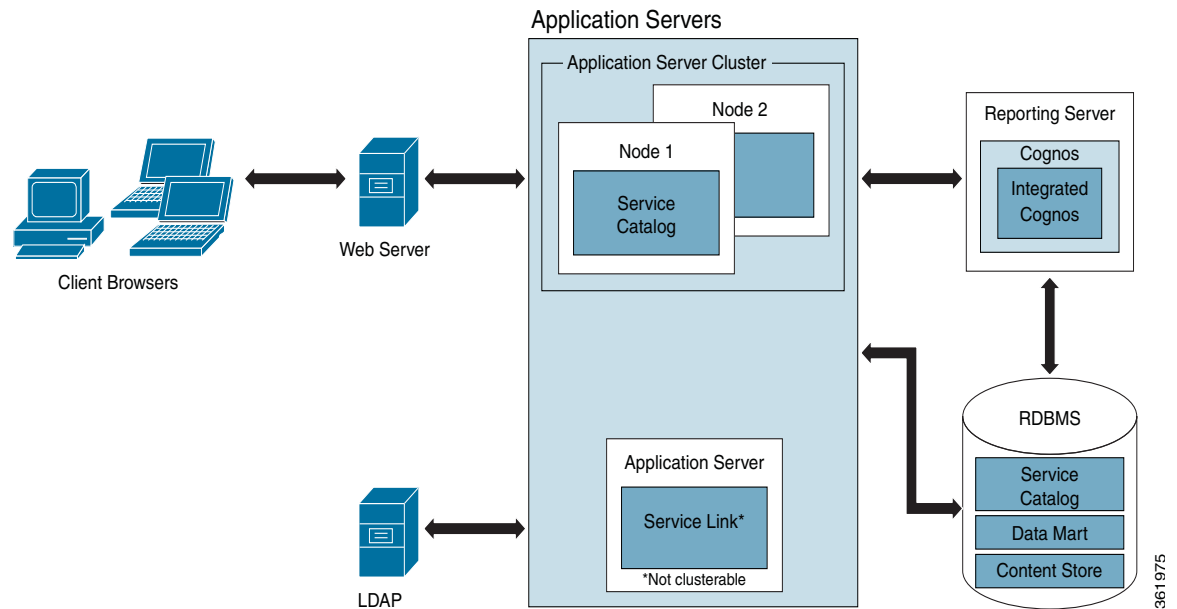
Cisco Prime Service Catalog comprises of two required component applications, Service Catalog and Service Link, and one optional component application called Reporting.

Figure 1-1 Typical Topology



For a WebLogic Cluster environment, the topology may include multiple application server machines. The following diagram shows an example of an application server cluster with two nodes containing the Service Catalog component application, and a standalone application server containing the Service Link component application:

Figure 1-2 *Clustered Topology*

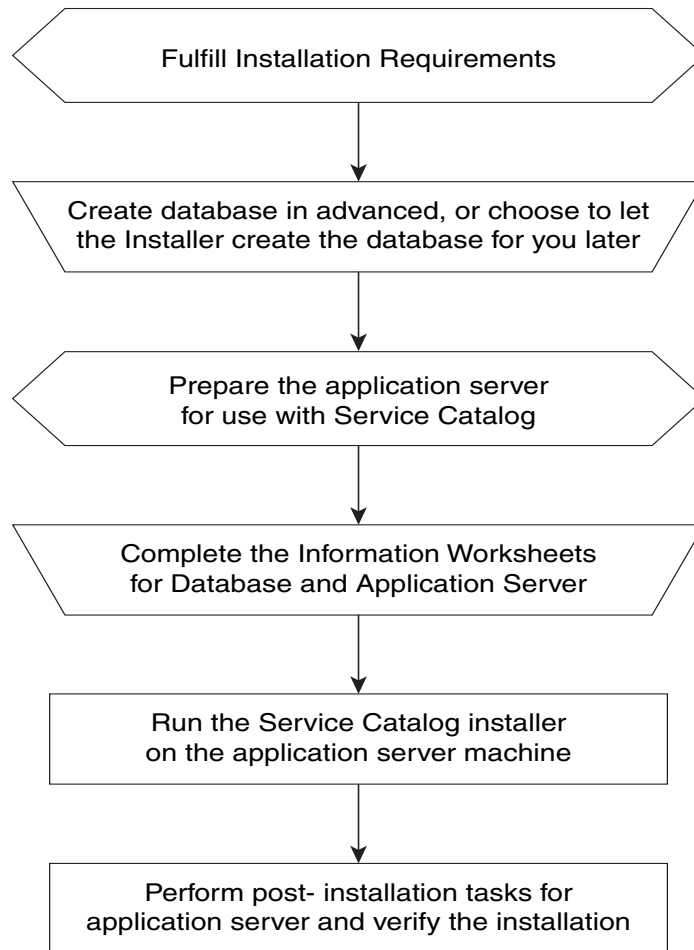


Subsequent sections in this chapter describe the software and hardware requirements for a typical deployment topology.

High-level Installation Flow

The following flowchart provides a high level flow of Prime Service Catalog installation.

Figure 1-3 Common Installation Steps



364203

High-level Installation Overview

This section provides a road map of the installation process for Prime Service Catalog:

-
- Step 1** Follow the instructions provided in [Installation Requirements](#) to ensure that you have adequately addressed the minimum hardware and software requirements, and installed the prerequisite software.
- Step 2** Create the Service Catalog database, as described in [Configuring the Service Catalog Database](#) and complete the [Database Information Worksheet](#). You will need this information when running the Prime Service Catalog installation wizard.
- Step 3** Prepare the application server for use with Prime Service Catalog, by performing the tasks described in one of the following sections:
- a. For JBoss, go to the [Preinstallation Configuration for JBoss](#).
 - b. For WebLogic, go to the [Preinstallation Configuration for WebLogic](#).
- Complete the respective Application Server Information Worksheet as described in the [Worksheets](#) section. You will need this information when running the Prime Service Catalog installation wizard.
- Step 4** Run the Prime Service Catalog installer on the application server machine, as described in the [Performing a Typical Installation](#). If you are performing an upgrade installation from a previous release, see [Upgrading Prime Service Catalog](#) in conjunction with this section.
- Step 5** Perform the post installation tasks for your application server and verify your installation as described in one of the following sections:
- a. For JBoss, go to the [Postinstallation Configuration for JBoss](#).
 - b. For WebLogic, go to the [Postinstallation Configuration for WebLogic](#).
- Step 6** To fully enable the Reporting features, you also need to install the Reporting software module and the Cognos software, and configure the Cognos Server to integrate with the Prime Service Catalog application. When you are ready to do this, follow the instructions in [Installing and Upgrading Reporting Module](#).
-