

Cisco Unified Access Portfolio

WLAN Controller Portfolio

Large Campus

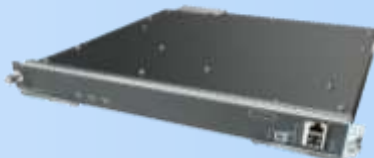
Catalyst 3850



5508



WISM2



5760



Service Provider

8500



- 1 to 50 APs per switch/stack (Directly connected APs)
- 2000 clients per stack
- 40 Gbps per switch

- 12 to 500 APs
- 7000 clients
- 8 Gbps

- 100 to 1000 APs
- 15,000 clients
- 20 Gbps

- 25 to 1000 APs
- 12,000 clients
- 60 Gbps

- 300 to 6000 APs
- 64,000 clients
- 10 Gbps

Small Campus / Branch (Controller On-Premise)

SRE
ISR G2



2500



Virtual
Controller



Catalyst
3850/3650/Su
p8



Virtual
Controller



Flex 7500



- 5 to 50 APs
- 500 clients
- 500 Mbps

- 5 to 75 APs
- 1000 clients
- 1 Gbps

- 5 to 200 APs
- 3000 clients
- 500 Mbps

- 1 to 50 APs (25 3650) per switch/stack (Directly connected)
- 2000 clients per stack
- 40 Gbps per switch

- 5 to 200 APs
- 3000 clients
- 500 Mbps

- 300 to 6000 APs
- 64,000 clients
- 1 Gbps

Virtual Controller

Midmarket-Focused Solution

New since 7.3

Product Scope

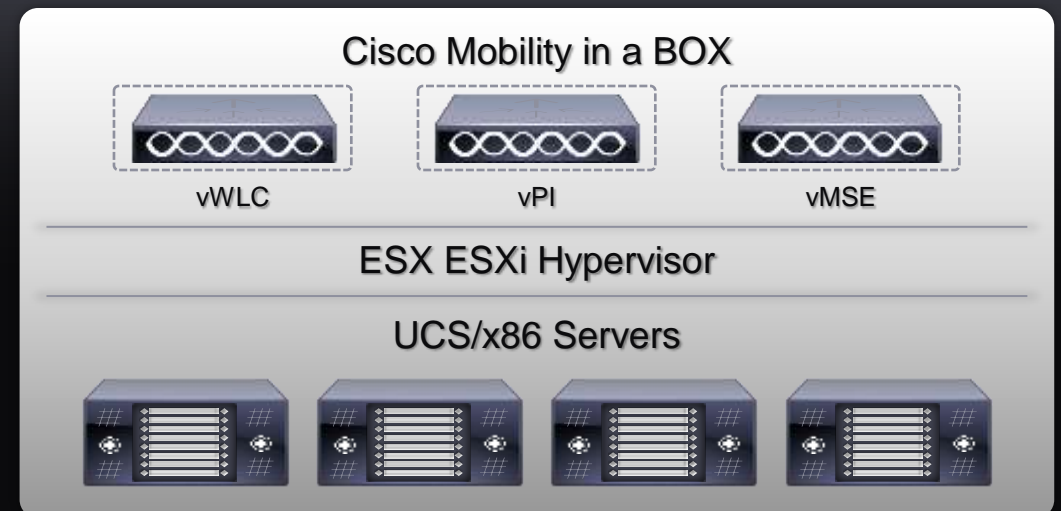
- 5 to 200 AP support, 3,000 clients
- One AP adder license
- FlexConnect mode only
- Support on VMware ESX/ESXi at FCS (similar to NCS and MSE)
- Support on Cisco UCS C-Series and B-Series and equivalent servers

Pricing

- Base SKU (with five AP licenses) = \$750
- One AP Adder license = \$150

Target Market

- Mid-market with spare compute platform
- Alternative to Flex 7500 for customers with fewer branches
- Partner/MSP-hosted Wi-Fi service
- NOT for large campus



Cisco Aironet Indoor Access Point

Industry's Best 802.11n and 802.11ac Series

Mission Specific

600 & 700

NEW



- 2x2:2 Dual-Band Dual-Radio
- 702w: Wall Plate AP
 - Dorms, hospitality
- 702i: Compact Mid-market AP
- 600: Teleworker

Enterprise Class

1600



- 3x3:2 Dual-Band Dual-Radio
- CleanAir Express*
- ClientLink 2.0
- VideoStream

Mission Critical

2600



- 3x4:3 Dual-Band Dual-Radio
- High Client Scalability
- CleanAir
- ClientLink 2.0
- VideoStream

Best in Class

3700

NEW



- 4x4:3 Dual-Band Dual-Radio
- Over 1 Gbps, 802.11ac support
- High Density Experience
- CleanAir 80 MHz, ClientLink 3.0, VideoStream
- Future proof modularity: Security, 3G Small Cell or Wave 2 802.11ac

Flexibility

Enterprise

Mission Critical

Best In Class

Cisco High Density Experience Technology

Performance, Mitigation, Scalability and Roaming Optimized for high Client Density Networks

CleanAir 80 MHz

Optimal performance for high throughput, high density environments

RF interference detection & mitigation optimized for 802.11ac's wider channel bandwidths

ClientLink 3.0

Increase performance & range by up to 60%

Cisco patented implicit beamforming technology for 802.11ac clients, complementing Explicit BF. Also extend capabilities to 802.11a/g/n clients.



RF Turbo Performance

Support highly dense clients without performance degradation

Scale seamlessly to 60+ 802.11ac clients using interactive video and multimedia traffic with no performance degradation.

Optimized Roaming

Intelligently assist client roaming based on configurable attributes

Right size WiFi cell to better assist client handoff in a dense network

RF Noise Reduction*

Enables higher density AP deployments to support client density and increased bandwidth

Increase spectrum usage efficiency to improve co-channel performance

Cisco Aironet 700W Access Point Series

Wall Mount, Dual Radio with 4 (four) integrated GbE ports

New
Q2 2014

- Target Hospitality, Dorm, Multi Dwelling
- Enterprise class RF performance, integrated antennas, Dual Radio 2x2:2
- 4x GbE local ports with 1x PoE out
- Sleek design in a small form factor (6 x 4 x 1.5 in)
- Purpose-built bracket for ease of mounting to numerous wall-box standards
- Physical security enhancements: Torx screw or Kensington lock



Cisco Aironet 802.11x G2 Series Comparison Matrix

*Per Radio **Available as a Software Upgrade in 1HCY14

Indoor Access Point Series	600 Teleworker	700 (Shipping)	1600	2600	3600	3700 (Dec CY13) 
Max Data Rate*	300 Mbps	300 Mbps	300 Mbps	450 Mbps	1.3 Gbps	1.3 Gbps
RF Design MIMO:Spatial Stream	2x3:2	2x2:2	3x3:2	3x4:3	11n: 4x4:3 11ac: 3x3:3	4x4:3
Performance/Coverage/ Investment Protection	◆◆	◆◆	◆◆◆	◆◆◆◆	◆◆◆◆◆	◆◆◆◆◆
Max No. of Clients*	15	100	128	200	200 50 - .11ac Module	200
RRM		✓	✓	✓	✓	✓
CleanAir		TBD	CleanAir Express**	✓	✓	✓
ClientLink		ECBF	ClientLink 2.0	ClientLink 2.0	ClientLink 2.0 for 802.11agn EBF for 802.11ac	ClientLink 3.0 for 802.11a/g/n/ac & ECBF for 802.11ac
Max No. of ClientLink Clients*			32	128	128 - ClientLink 32 – ECBF	128
BandSelect		✓	✓	✓	✓	✓
VideoStream		✓	✓	✓	✓	✓
Rogue AP Detection		✓	✓	✓	✓	✓
Adaptive wIPS		✓	✓	✓	✓	✓
External Antenna Opt		(Future)	✓	✓	✓	✓
Module Options	Multiple Local Ethernet Ports				WSSI (Security) – Shipping 802.11ac - Shipping Cisco 3G Small Cell – Q4CY13 802.11ac Wave 2 – CY15	WSSI (Security) Cisco 3G Small Cell – Q4CY13 802.11ac Wave 2 – CY15
List Price	\$419	\$495	\$695	\$1095	\$1495 - AP \$500 – Module	\$1495

Controller comparison Matrix

	Virtual controller	Controller for ISRG2	2500 series	5500 series	WiSM2	7500 series	8500 series
Target deployments	Small or midsized business Branch	Small or midsized business Branch	Small or midsized business Branch	Midsized to large enterprise	Midsized to large enterprise	Large number of branches	Large enterprise and service provider
Form factor	Virtual Machine Software	ISR SRE	Desktop	1RU Appliance	Catalyst 6500 Module	1RU appliance	1RU appliance
DEPLOYMENT MODES							
FlexConnect	✓	✓	✓	✓	✓	✓	✓
Local Mode	-	✓	✓	✓	✓	-	✓
Mesh	-	✓	✓	✓	✓	-	✓
OfficeExtend	-	-	✓	✓	✓	✓	✓
SCALE							
Min Access points	5	5	5	12	100	300	300
Max Access points	200	50	50	500	1000	6000	6000
Max Client support	3000	500	500	7,000	15,000	64,000	64,000
Max RF Tag support	3000	500	500	5,000	5,000	50,000	50,000
Max Throughput	500 Mbps	500 Mbps	500 Mbps	8 Gbps	20 Gbps	1 Gbps	10 Gbps
Max # of AP groups	200	30	30	500	1000	6000	6000
Max Number of Flex groups	100	30	30	100	100	2000	2000
Max Access points per group	100	25	25	25	25	100	100
Max WLANs	512	16	16	512	512	512	512
Max VLANs	512	16	16	512	512	4095	4095

Controller comparison Matrix

Based on 7.3 rel

	Virtual controller	Controller for ISR G2	2500 series	5500 series	WISM2	7500 series	8500 series
FEATURE SUPPORT							
Workgroup bridge	✓	✓	✓	✓	✓	✓	✓
LAG	-	-	-	✓	-	-	-
Mobility	L2	L2/L3	L2/L3	L2/L3	L2/L3	L2	L2/L3
DTLS	-	-	✓	✓	✓	✓	✓
CAC	✓	✓	✓	✓	✓	✓	✓
Cisco VideoStream	-	✓	✓	✓	✓	-	✓
Guest svcs (wireless)	✓	✓	✓	✓	✓	✓	✓
Guest svcs (wired)	-	-	-	✓	✓	-	-
Guest anchor	-	-	-	✓	✓	-	-
PLATFORM DETAILS							
Interfaces	2 vNICs	ISR G2 backplane	4 x 1GbE	8 x 1GbE	Catalyst 6500 backplane	2 x 10GbE	2 x 10GbE
Redundant Power	NA	✓ (option)	No	✓ (option)	✓	✓ (installed)	✓ (installed)
Redundant Fans	NA	✓	Fanless	✓	✓	✓	✓
Max Power	-	Refer to SRE	80W	125W	220W	675W	675W
Hardware Warranty	NA	90 days	90 days	90 days	90 days	90 days	90 days
Software Warranty	90 days	90 days	90 days	90 days	90 days	90 days	90 days

Short videos that explain our Key Innovations

Please connect to the Internet and click the YouTube icon in slide show mode to activate VoD

- Converged Access



- Connected Mobile Experience



- Gigabit Wi-Fi – 802.11ac



- CleanAir



- Application Visibility & Control



- Identity Services Engine



- Stateful Switchover



- Prime Infrastructure



- Bonjour Services Directory



Thank You

