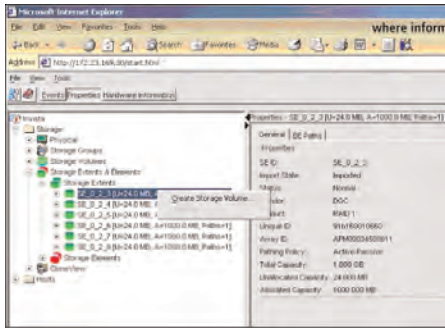


## At-A-Glance

Storage virtualization is an enabling technology that simplifies management of complex infrastructures, enables nondisruptive operations, and facilitates critical elements of a proactive information lifecycle management (ILM) strategy. The Cisco® MDS 9000 Family helps enable networked storage virtualization with the 32-port storage services module (SSM). EMC Invista is a high-performance networked storage virtualization solution that runs on the Cisco MDS 9000—placing virtualization intelligence in your existing storage area network (SAN) infrastructure. EMC Invista takes advantage of specialized processing power in the switch to perform I/O redirection and other virtualization tasks at wire speed. Best of all, you can integrate EMC Invista into your current SAN environment and start to benefit from networked storage virtualization immediately (Table 1).

**Table 1.** Benefits of EMC Invista on the Cisco MDS 9000

Customer Benefit	Proof Points
<b>Information Lifecycle Management</b>	<ul style="list-style-type: none"> <li>• Simplified management</li> <li>• Non-disruptive data migration across tiered storage</li> </ul>
<b>Increased Storage Usage</b>	<ul style="list-style-type: none"> <li>• Heterogeneous storage pooling</li> <li>• Flexible storage provisioning</li> </ul>
<b>Improved Business Continuity</b>	<ul style="list-style-type: none"> <li>• Supports point-in-time copy (clones)</li> <li>• Flexible data protection services</li> </ul>



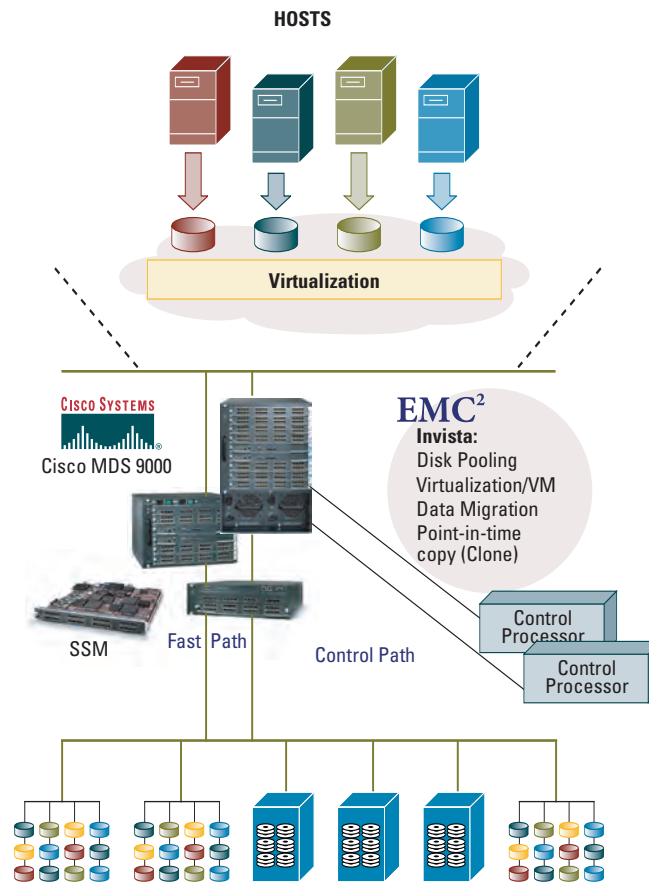
EMC Invista running on the Cisco MDS 9000 enables heterogeneous storage pooling and dynamic storage provisioning, allowing allocation of any storage to any application. High availability is increased with seamless data migration. Appropriate class of storage is allocated to point-in-time copies (clones). With EMC Invista on the Cisco MDS 9000, you can:

- **Keep Applications Available**—by reducing planned downtime and other disruptions.
- **Reduce Administrative Overhead**—by simplifying storage allocation and centralizing volume management.

- **Get More from Your Current Storage Resources**—by using them more effectively and efficiently.
- **Reduce Costs**—by maximizing your storage investment and minimizing management effort.

### THE SOLUTION

**Figure 1** Networked storage virtualization with EMC Invista's fast path hosted on any modular Cisco MDS 9000 with an SSM.



The Cisco MDS 9000 SSM contains 32 Fibre Channel ports and provides the additional purpose-built hardware required to run fabric-hosted applications. It fits into any Cisco MDS 9000 Family switch or director that has an open slot, helping to maximize the flexibility and return on investment (ROI) for the customer. By adding SSMs, organizations can improve virtualization performance and server connectivity in increments of 32 ports. As a result, an organization can be confident that as it grows, its system can grow with it.

Networked virtualization solutions, such as EMC Invista, are greatly enhanced through close integration with the underlying layer of network intelligence and capability. The Cisco MDS 9000 offers high port density, scalability, and many features that contribute to the overall manageability and capability of the solution, including VSANs, SAN security, quality of service (QoS), and multiprotocol connectivity.

### HOW TO PURCHASE

For more information on the solution or purchasing the solution, please contact your Cisco account manager or send an e mail to [invista@cisco.com](mailto:invista@cisco.com).