



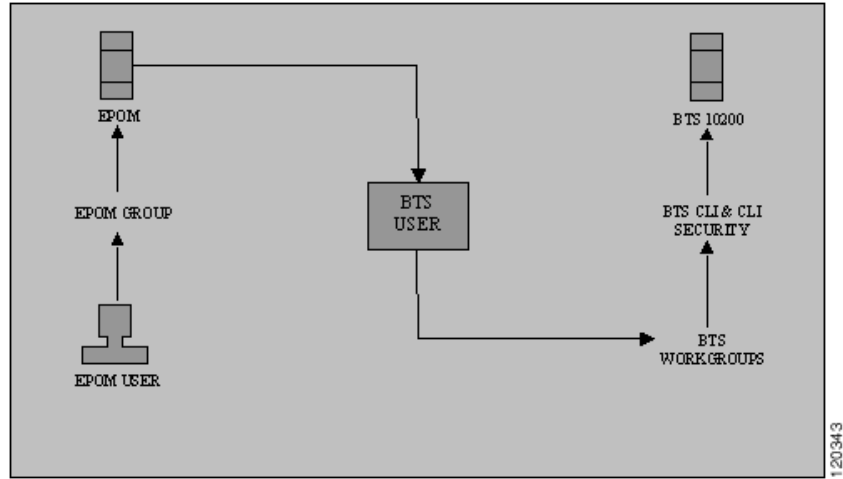
Advanced EPOM Usage

EPOM Groups and Restricted BTS Command Access

There is a general misconception that provisioning a BTS account with restricted BTS CLI access and simultaneously adding the same account to EPOM would automatically lead to that EPOM account gaining the same privileges as the BTS account.

In reality EPOM doesn't provision restricted BTS command access on per EPOM user basis, but it is based on a per EPOM Group basis. With each EPOM Group associated to a BTS user account, desired instances of EPOM users are created and associated to that particular EPOM Group.

A single EPOM Group is generally associated with a single BTS login (therefore a single BTS device, unless multiple BTS devices have similar logins and restricted access applied to them). However, a single EPOM user can be associated with multiple EPOM Groups to provision restricted access across various BTS devices across the network.



Analysing portions of defaulttree.xml

```
<tree name="default">
```

The above line defines the tree name, when customizing the tree, say in Group settings you gave the navigation tree name as customizedtree. In this if \$EPOM_INSTALL_DIR is the EPOM installation directory then you would create a new xml file named customizedtree.xml under the directory \$EPOM_INSTALL_DIR/tomcat/webapps/ROOT/xml/bts/navigation.

Now change the above line to **<tree name="customizedtree">**

```
<baseurl name="bts">
```

```
    <urlprefix><![CDATA[/bts/btscomp.jsp?_inv=[_inv]&_noun=]]></urlpre
    fix>
</baseurl>
```

```
<baseurl name="btssearch">
```

```
    <urlprefix><![CDATA[/bts/btscompsearch.jsp?_inv=[_inv]&_noun=]]></
    urlprefix>
</baseurl>
```

```

<baseurl name="btsstatus">

    <urlprefix><![CDATA[/bts/btscompstatus.jsp?_inv=[_inv]&_noun=]]></urlprefix>
</baseurl>

<baseurl name="btsdiag">

    <urlprefix><![CDATA[/bts/btscompdiag.jsp?_inv=[_inv]&_noun=]]></urlprefix>
</baseurl>

<baseurl name="btsreset">

    <urlprefix><![CDATA[/bts/btscompreset.jsp?_inv=[_inv]&_noun=]]></urlprefix>
</baseurl>

<baseurl name="btswizard">

    <urlprefix><![CDATA[/bts/btswizard.jsp?_inv=[_inv]&_noun=]]></urlprefix>
</baseurl>

```

various BTS CLI nouns. Following is the summary of associations they make:

-
- Step 1** bts keyword is associated with the btscomp.jsp page.
 - Step 2**
 - Step 3**
 - Step 4**
 - Step 5**
 - Step 6**
 - Step 7**
-

These associations are further extended in the next section and finally used on a per BTS CLI noun basis.

```
<branch reskey="bts.head.ain">
  <node reskey="bts.ani_wb_list">
    <url base="bts">ani_wb_list</url>
  </node>
</branch >

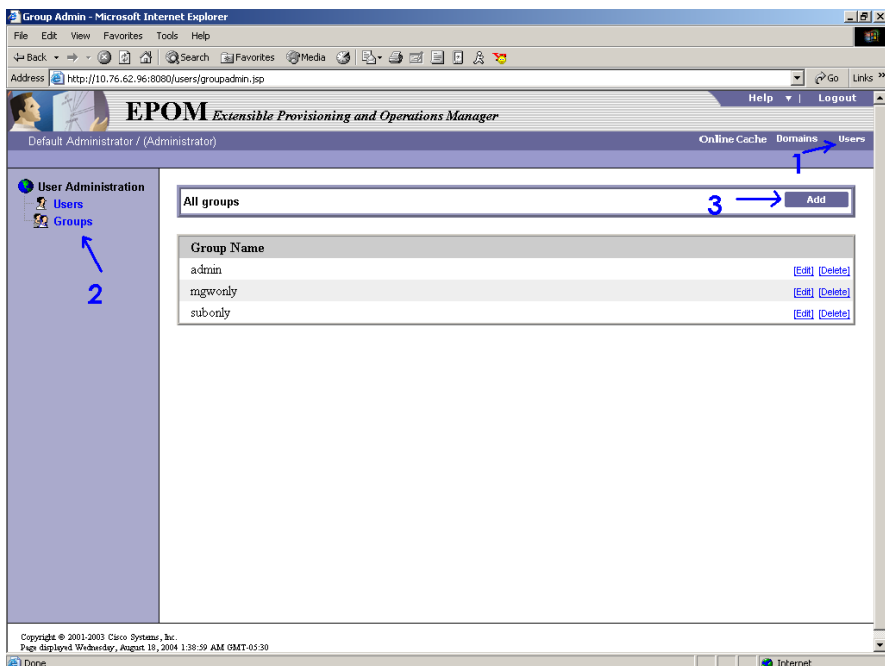
<branch reskey="bts.head.isdn">
  <node reskey="bts.isdn_bchan" image="btssearch">>
    <url base="btssearch">isdn_bchan</url>
  </node>
</branch >
```

- The first `<branch....ain>`, statement defines that the `ain`, would be displayed as the heading under which all other nouns would appear. Noticeably in our example `ani_wb_list` would appear after node `ain` is expanded. The `<url base="bts">` signifies that show verb would be used for that noun and it would be invoked in `btscomp.jsp`.

The second `<branch....isdn>`, statement defines that the `isdn`, would be displayed as the heading under which all other nouns would appear. Noticeably in our example `isdn_bchan` would appear after node `isdn` is expanded. The `<url base="btssearch">` signifies that show verb would be used for that noun and it would be invoked in `btscompsearch.jsp`. Where before invoking show command, parameters would be accepted to build where clauses while searching the noun.

Aim: To provide access to just subscriber show, change.

- Step 1** Create a new BTS user restrictedBTSUser, with just show privileges on subscriber noun. Associate it properly with BTS workgroups.
- Step 2** Add a group in EPOM:
 - a. Click on "Users" (#1) in the primary navigation
 - b. Click on Groups in the left side navigation tree, (#2)
 - c. Click on the "Add" button, (#3)



Use parameters as

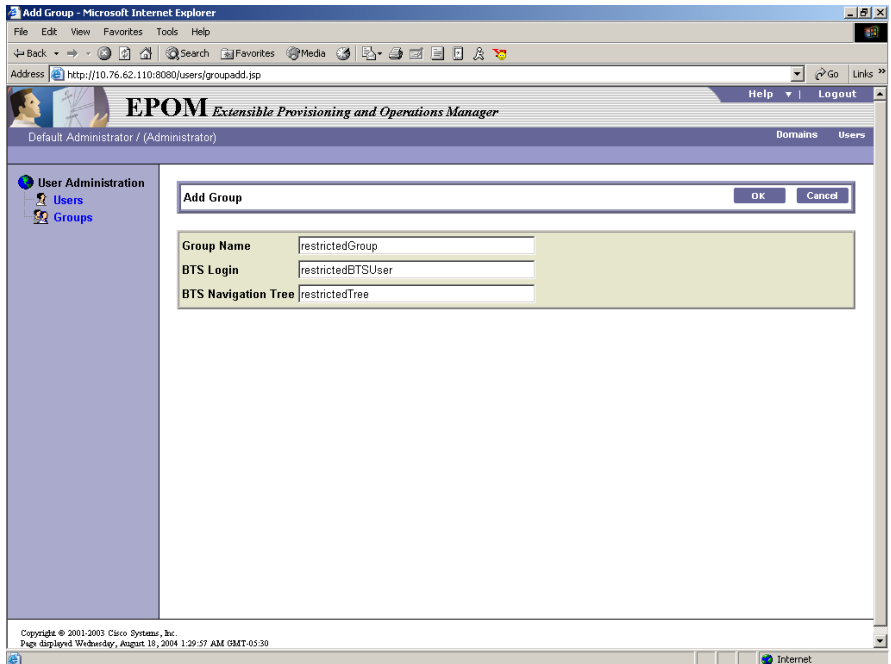
Groupname: restrictedGroup

This is the EPOM group that you are creating.

This points to the XML file that you put on the EPOM server, customized using the Navigation Trees section in this document. Do remember to change `<tree name="restrictedTree">` in the file `$EPOM_INSTALL_DIR/tomcat/webapps/ROOT/xml/bts/navigation/restrictedTree.xml`. Review the example `restrictedTree.xml` file at end of the document

Specifying the BTS Login ID indicates that EPOM users of group `restrictedGroup` can only issue BTS commands with the authority and privilege of BTS user `restrictedBTSUser`. By creating the `restrictedBTSUser` user in the BTS CLI file, you are limiting the commands that the users can perform.

The BTS Navigation tree identifies an XML file that will be used to list the users of the `restrictedGroup` the BTS configuration items for them to select.



120345

d.

e. Hit OK

Logout, log back in as one of the users that you created in Step 5.

They should only have access to see and to do:

-

restrictedTree.xml

```
<image name="BTS10200">
  <url base="images">16x16_BTS_10200_Softswitch_Blue.gif</url>
</image>

<image name="tablegrp">
  <url base="images">table16_window.gif</url>
</image>
<image name="bts">
  <url base="images">table16.gif</url>
</image>
<image name="btssearch">
  <url base="images">table16_basicquery.gif</url>
</image>
<image name="btsstatus">
  <url base="images">table16_show.gif</url>
</image>
<image name="btsdiag">
  <url base="images">table16_diag.gif</url>
</image>

<image>
  <url base="images">menu_folder_open.gif</url>
</image>

<image>
  <url base="images">menu_folder_closed.gif</url>
</image>

<image>
  <url base="images">menu_corner.gif</url>
</image>

<image>
  <url base="images">menu_corner_plus.gif</url>
</image>

<image>
```

```
<branch name="Restricted Commands">

<node reskey="bts.subscriber" image="btssearch">
  <url base="btssearch">subscriber</url>
</node>

</branch>
</root>
</tree>
```

bts_export

is used to query a BTS server and outputs a file that contains the CLI commands, used to populate the BTS server. Generally it is used for backing up the currently provisioned BTS state and also used before a BTS upgradation. The resultant CLI file can be secure FTPed to the concerned BTS server in the **/opt/ems/ftp/deposit**

```
root@cyber229:opt 21> /opt/CSCOepom/bin/bts_export
NAME
```

```
bts_export - BTS Config Export
SYNOPSIS
    bts_export -h hostname -v BTSver of hostname -o outfile [-l login
-p password
]
DESCRIPTION
    Export a BTS Configuration.
OPTIONS
    -h    Hostname
    -v    BTSversion of hostname (3.5,4.1,4.2,4.4.0)
    -o    Output file
    -l    Login
    -p    Password
    -s    Site ID
EXAMPLES
    1. bts_export -h bts_host -v host_bts_ver -o config.cli
    2. bts_export -h bts_host -v host_bts_ver -l login -p passwd -s
        siteid -o con
        fig.cli
```

Other Important Scripts in EPOM

genInsCmds.sh

produces a file of equip and control commands to place all MGWs in-service, all subscriber-terminations and trunk-termination in-services.

If any of the exported commands contain the option – *<term_type>*

BTS Import

command is a utility for bulk configuration of Cisco BTS 10200 servers that uses SSL to transfer BTS 10200 CLI commands from Cisco EPOM server to the Cisco 10200 BTS server. **bts_import** is used in scenarios when a CLI

file generated from `bts_export` of a Cisco BTS 10200 server is used to configure a Cisco BTS 10200 server. The utility can configure thousands of BTS 10200 CLI commands on a particular Cisco BTS 10200 server with one shot.

Following is the usage description of `bts_import`:

`-u` User name

EXAMPLES

1. `bts_import -h bts_host -u username -f config.cli`