

CISCOVIEW DEVICE MANAGER FOR THE CISCO CATALYST 6500 SERIES SWITCH VERSION 1.0

CiscoView Device Manager for the Cisco® Catalyst® 6500 Series Switch resides in the switch and manages several Layer 2 and Layer 3 features for a single chassis. A task-based tool, CiscoView Device Manager eases the initial setup and deployment of end-to-end services across modules by offering configuration templates based on recommended practices. It further enhances the user-friendliness of the Cisco Catalyst 6500 Series through graphical representation of the VLAN, and by providing a single launch point for multiple module managers. CiscoView Device Manager is a free application with a small footprint that easily can be downloaded and installed on the supervisor engine Flash memory.

THE NEXT GENERATION OF DEVICE-EMBEDDED SOLUTIONS

Managing the Cisco Catalyst 6500 Series Switch requires a high level of command-line interface (CLI) awareness for users to completely control the versatility of all the features and services available. Some typical challenges faced by users include:

- Support of initial deployment of several services, such as firewalls, content load balancing, and intrusion detection
- Complete “service deployment” instead of only “module configuration”
- Visualization of VLAN interconnectivity between services

CiscoView Device Manager for the Cisco Catalyst 6500 Series manages several Layer 2 and Layer 3 features on the Catalyst 6500 Series and helps users accomplish these tasks with ease. CiscoView Device Manager offers the following features:

- Easy-to-use graphical interface for VLAN visualization, monitoring, and port setup
- Configuration based on templates and recommended practices to simplify the initial setup of services
- Comprehensive end-to-end services setup using a single tool

GRAPHICAL VLAN VISUALIZATION

CiscoView Device Manager makes it easier than was previously possible through the CLI to visualize the Cisco Catalyst 6500 “network-in-a-box.”

Users create configurations by responding to a series of questions in user-friendly wizards and dialog boxes, and CiscoView Device Manager designs the recommended-practice CLI configuration based on those responses. At the end of the process, users view the CLI command syntax created and decide whether to deploy the configurations to the chassis immediately or to save them for future editing.

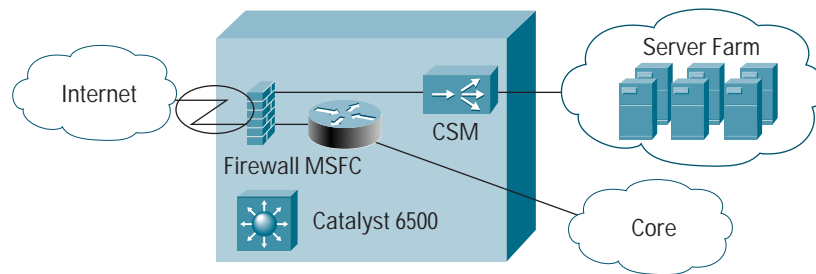
CiscoView Device Manager includes the following templates for initial configuration:

Firewall Inside—This scenario typically is used in the Internet data center. Placing the Multilayer Switch Feature Card (MSFC) outside the Cisco Catalyst 6500 Series Firewall Services Module (FWSM) makes it possible for the MSFC to perform routing toward the core network. The FWSM provides routing to the border routers and the demilitarized zone (DMZ).

Firewall Inside with Cisco Content Switching Module (CSM)—This scenario typically is used in intranet data centers. Placing the MSFC outside the Cisco Catalyst 6500 Series FWSM in the intranet data center means that the MSFC faces the core. In this design, the default gateway for the servers is either the FWSM or the Cisco CSM.

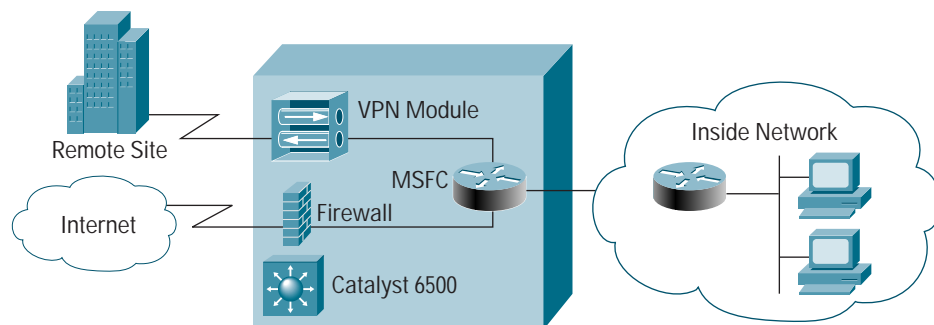
Firewall Outside—This scenario typically is used in Internet data centers. Placing the Cisco Catalyst 6500 Series FWSM outside the MSFC in the Internet data center allows the MSFC to face the core. In this design, the default gateway for the servers is the FWSM.

Figure 3
Firewall Outside with Cisco CSM Template



Firewall Outside with Cisco CSM—This scenario is usually used in Internet data centers. Placing the Cisco Catalyst 6500 Series FWSM outside the MSFC means that the MSFC performs routing toward the core. The FWSM performs routing toward the border routers and the DMZ.

Figure 4
VPN and Firewall Template

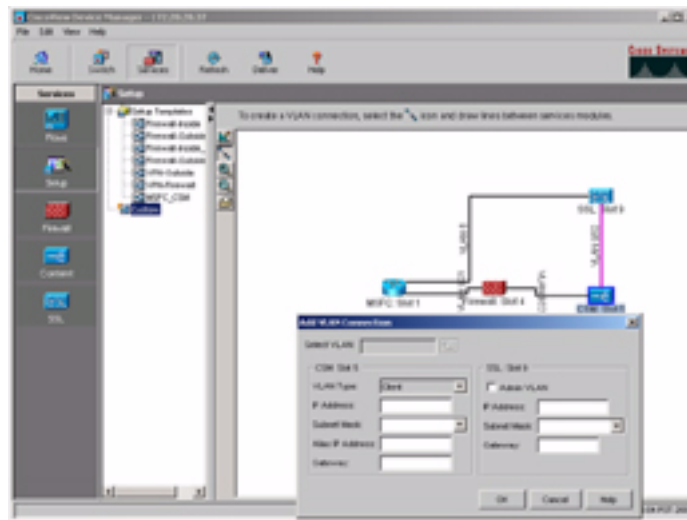


VPN and Firewall—This scenario usually is used to terminate secure connections to remote offices and telecommuters while providing the firewall function to the general public accessing an Internet server farm. The Cisco Catalyst 6500 Series FWSM is used to apply firewall policies to untrusted clients while the Cisco 7600/Catalyst 6500 IPsec VPN Services Module (VPN SM) provides secure access to the internal network.

VPN Outside—This scenario is used when the Cisco 7600/Catalyst 6500 IPsec VPN SM serves as the headend VPN termination platform for either remote access or enterprise customers. The VPN SM and Cisco Catalyst 6500 Series FWSM protect the internal and DMZ networks.

MSFC and Cisco CSM—This scenario configures connectivity between the MSFC and Cisco CSM modules. The Cisco CSM provides load-balancing services for the server farm.

Figure 5
Custom VLAN Creation by "Drag-and-Drop" of Lines Between Modules

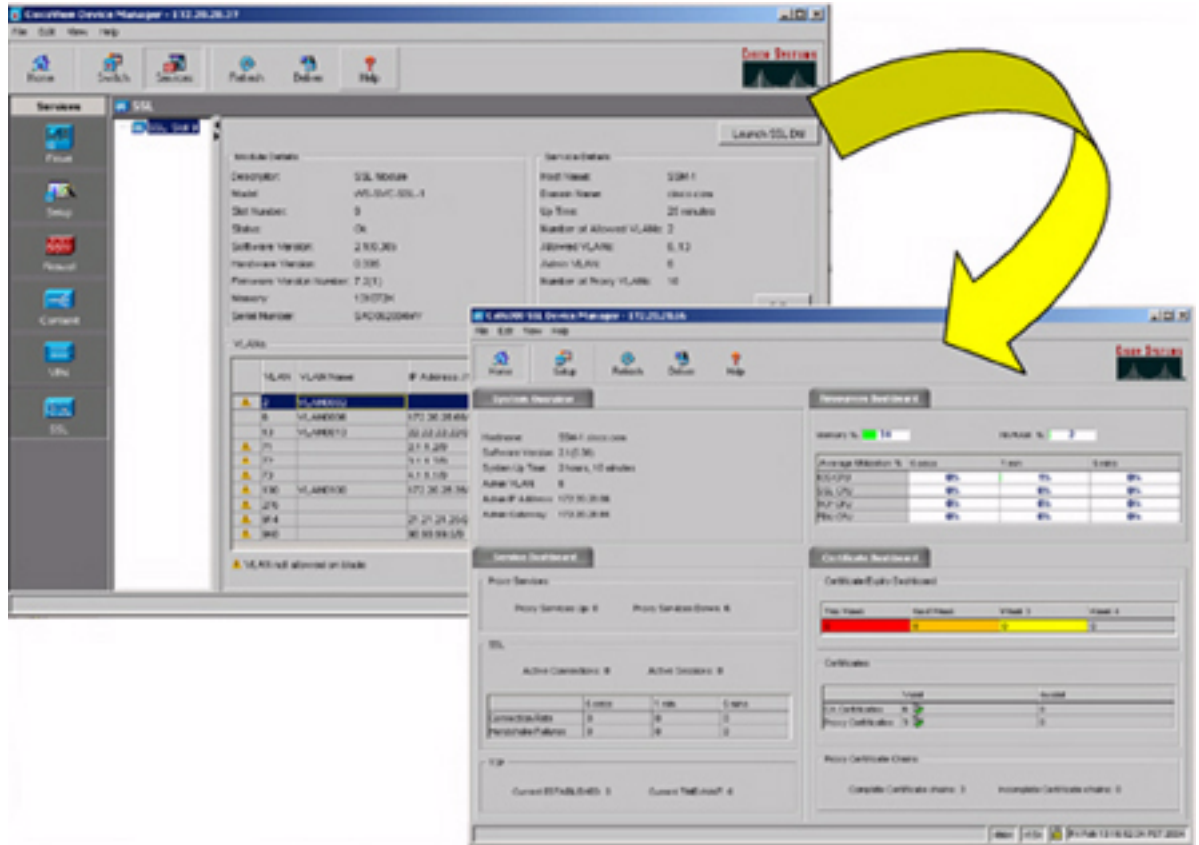


A *custom* setup mode is available that allows additional services to be specified, where VLANs can be created by drag-and-drop of lines between any modules on the topology map. CiscoView Device Manager intelligently detects VLANs being created between modules that should not be directly connected and cautions users against connecting them.

END-TO-END SETUP USING A SINGLE TOOL

Users not familiar with the CLI can create complex end-to-end service configurations using CiscoView Device Manager.

Figure 6
End-to-End Configuration Using GUI Tools



CiscoView Device Manager configures global parameters, such as spanning tree, banners, and other chassis-level features such as setting up connectivity to individual modules. After the configurations are complete, users can launch the embedded managers for each of the modules (such as CiscoView Device Manager for the Secure Sockets Layer [SSL] module, Firewall Device Manager on the firewall module, etc.) for deeper module-specific configuration.

Providing a single launch point for the device managers for each module in a Cisco Catalyst 6500 Series chassis, CiscoView Device Manager makes configuring end-to-end services smooth, reducing error-prone tasks associated with using a CLI.

Table 1 Specifications for Using CiscoView Device Manager for the Cisco Catalyst 6500 Series

Parameter	Specifications
Chassis Supported	Catalyst 6503, Catalyst 6506, Catalyst 6509, Catalyst 6509 NEBS, 6509-NEBS-A, Catalyst 6513
Supervisor Cards Supported	Supervisor Engine IA, Supervisor Engine II, Supervisor Engine 720
Modules Supported	WS-X6066-SLB-APC (CSM), WS-SVC-FWM-1-K9 (Firewall Services Module), WS-SVC-SSL-1-K9 (SSL Services Module), WS-SVC-IPSEC-1 (VPN Service Module), WS-SVC-NAM-1/2 (Network Analysis Module), WS-SVC-IDSM2-BUN-K9 (IDS Service Module)
Client Operating System	Windows 2000 (Professional, Server) Service Pack 2 and Service Pack 3, Windows XP Service Pack 1; Solaris 2.8, and 2.9

Table 1 Specifications for Using CiscoView Device Manager for the Cisco Catalyst 6500 Series (Continued)

Parameter	Specifications
Browsers	Internet Explorer 6.0 Service Pack 1 on Windows Netscape Navigator 7.0 on Solaris and 7.1 on Windows
Java Plug-in	Java Plug-in 1.4.1_05
Memory Requirements	Minimum 3 MB of free Flash memory on the Supervisor Engine
Recommended Connection Speed	56 Kbps or higher

Table 2 Cisco IOS Software Release Support^a

Module	Cisco IOS Release	Software Release for Services Module
Supervisor IA	12.1(13)E, 12.1(19)E, 12.1(20)E	–
Supervisor II	12.2S(14)Y, 12.1(13)E, 12.1(19)E, 12.1(20)E	
Supervisor 720	12.2(14)SX1, 12.2(17A)SX1, 12.1(17B)SXA	–
VPN	12.2S(14)Y, 12.1(17B)SXA	–
CSM	12.1(13)E, 12.1(19)E, 12.1(20)E, 12.2(14)SX1, 12.2(17A)SX1, 12.1(17B)SXA	3.1(4) and higher
Intrusion Detection System Module (IDSM) II	12.2S(14)Y, 12.1(19)E, 12.2(14)SX1, 12.2(17A)SX1, 12.1(17B)SXA, 12.1(20)E	4.0, 4.1
FWSM	12.2S(14)Y, 12.1(13)E, 12.1(19)E, 12.2(14)SX1, 12.2(17A)SX1, 12.1(17B)SXA, 12.1(20)E	1.1(2), 1.1(3), 1.1(4), 2.2
Network Analysis Module (NAM) (I and II)	12.2S(14)Y, 12.1(13)E, 12.1(19)E, 12.2(14)SX1, 12.2(17A)SX1, 12.1(17B)SXA, 12.1(20)E	2.2, 3.1
SSL Service Module (SSLSM)	12.1(13)E, 12.1(19)E, 12.2(14)SX1, 12.2(17A)SX1, 12.1(17B)SXA, 12.1(20)E	1.1(1), 1.2(1) and higher
Ethernet and Gigabit Ethernet Cards	12.2S(14)Y, 12.1(13)E, 12.1(19)E, 12.2(14)SX1, 12.2(17A)SX1, 12.1(17B)SXA, 12.1(20)E	–

a.CiscoView Device Manager for the Cisco Catalyst 6500 Switch v1.0 Supports Native Mode Deployments Only

Table 3 Layer 2 Features Supported

Feature	Functions
System	Hostname, IP address, domain name, default gateway, contact, uptime
Cisco[®] Discovery Protocol	Enable/disable Cisco [®] Discovery Protocol, Cisco Discovery Protocol timers such as hold time, Cisco Discovery Protocol packet rate, show Cisco [®] Discovery Protocol neighbor information

Table 3 Layer 2 Features Supported (Continued)

Feature	Functions
Ports	<p>Port types: Support configuration of Ethernet, Fast Ethernet, Gigabit Ethernet (GbE), 10 GbE ports only; other port types are supported only in read-only mode</p> <p>Basic port configuration: Speed, duplex mode, link negotiation, flow control, Unidirectional Link Detection Protocol</p> <p>Supports bulk port configuration</p>
VLAN	Supports configuration of Ethernet VLANs, supports bulk VLAN configuration, add/edit/delete VLANs and switch virtual interfaces
Spanning Tree	Supports only Per VLAN Spanning Tree Plus, global spanning tree parameters, per VLAN and per port spanning tree parameters. Only global Spanning Tree Protocol parameters are supported for other Spanning Tree Protocol modes.
Miscellaneous	Global, clock, enable Secure Shell Protocol

Table 4 Services Module Support

Service	Discovery	Initial Setup	Launch Embedded Manager
Supervisor (IA, II and 720)	x	x	–
VPN	x	x	(VPN Device Manager)
CSM	x	x	(CiscoView Device Manager for CSM)
IDS/SM II	x	x	(IDS Manager)
FW/SM	x	x	(Firewall Device Manager)
NAM (I & II)	x	x	(NAM Traffic Analyzer)
SSL SM	x	x	(CiscoView Device Manager for SSL SM)
All Other CiscoView-supported Cards	x	–	–



Corporate Headquarters

Cisco Systems, Inc.
 170 West Tasman Drive
 San Jose, CA 95134-1706
 USA
 www.cisco.com
 Tel: 408 526-4000
 800 553-NETS (6387)
 Fax: 408 526-4100

European Headquarters

Cisco Systems International BV
 Haarlerbergpark
 Haarlerbergweg 13-19
 1101 CH Amsterdam
 The Netherlands
 www-europe.cisco.com
 Tel: 31 0 20 357 1000
 Fax: 31 0 20 357 1100

Americas Headquarters

Cisco Systems, Inc.
 170 West Tasman Drive
 San Jose, CA 95134-1706
 USA
 www.cisco.com
 Tel: 408 526-7660
 Fax: 408 527-0883

Asia Pacific Headquarters

Cisco Systems, Inc.
 168 Robinson Road
 #28-01 Capital Tower
 Singapore 068912
 www.cisco.com
 Tel: +65 6317 7777
 Fax: +65 6317 7799

Cisco Systems has more than 200 offices in the following countries and regions. Addresses, phone numbers, and fax numbers are listed on the Cisco Web site at www.cisco.com/go/offices

Argentina • Australia • Austria • Belgium • Brazil • Bulgaria • Canada • Chile • China PRC • Colombia • Costa Rica • Croatia Czech Republic • Denmark • Dubai, UAE • Finland • France • Germany • Greece • Hong Kong SAR • Hungary • India • Indonesia • Ireland Israel • Italy • Japan • Korea • Luxembourg • Malaysia • Mexico • The Netherlands • New Zealand • Norway • Peru • Philippines • Poland Portugal • Puerto Rico • Romania • Russia • Saudi Arabia • Scotland • Singapore • Slovakia • Slovenia • South Africa • Spain • Sweden Switzerland • Taiwan • Thailand • Turkey • Ukraine • United Kingdom • United States • Venezuela • Vietnam • Zimbabwe