

CVDM FOR THE CISCO® CATALYST® 6500 SERIES SSL SERVICES MODULE VERSION 1.0

The CiscoView Device Manager for the Cisco® Catalyst® 6500 Series SSL Services Module (SSL Services Module) enables users easily to configure Secure Sockets Layer (SSL) services on their Catalyst SSL Services Module. A task-based tool that allows users to take advantage of the versatility of their Catalyst 6500 Series SSL Services Module, it offers configuration wizards based on best practices in tasks such as setting up trustpoints and proxy services. CiscoView Device Manager is a free embedded manager that resides in the Catalyst SSL Services Module Flash memory.

THE NEXT-GENERATION OF DEVICE-EMBEDDED SOLUTIONS

The Cisco Catalyst 6500 Series SSL Services Module is a feature-rich content load-balancing solution from Cisco Systems®. Managing a trustpoint on the Catalyst SSL Services Module requires a high level of awareness of the public key infrastructure (PKI) as well as the command-line interface (CLI) for users to take advantage of its versatility. Typical challenges faced by users include importing certificate authority (CA) certificates, importing or generating key pairs, registering certificates with CAs, and checking the status of registered certificates.

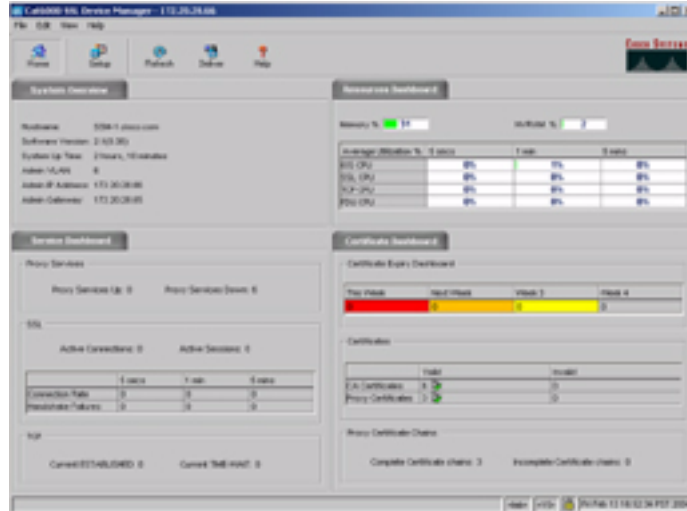
The CiscoView Device Manager for the Cisco Catalyst 6500 Series SSL Services Module manages several SSL Services Module features and helps users accomplish these tasks with ease. CiscoView Device Manager offers the following features:

- Customizable initial setup wizards
- Comprehensive configuration of SSL services using a single tool

CiscoView Device Manager for the SSL Services Module supports several features in SSL Services Module Versions 1.2 and 2.1, such as:

- Configuring trustpoint, proxy services, CA pools, and certificate access control lists
- Configuring SSL, TCP, header insertion, and URL rewrite policies
- Showing TCP and SSL statistics
- Visual indication of expiring and missing configured certificates
- Grouping and sorting of the trustpoints by CA, enrollment status, and expiration date

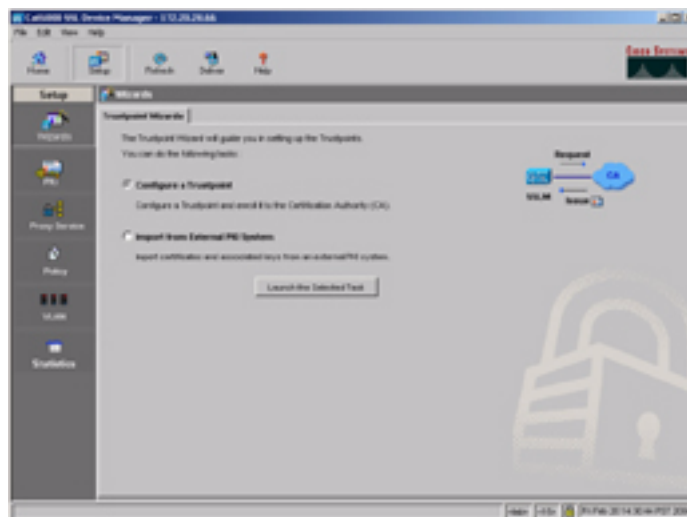
Figure 1
CiscoView Device Manager for Catalyst SSL Services Module Home Page



WIZARDS FOR CONFIGURING COMPLEX TASKS

CiscoView Device Manager for the SSL Services Module provides end-to-end configurations completely through GUI tools such as wizards, which guide users through options that are available for configuring trustpoints and proxy services. This includes importing certificate and key pairs, configuring CA parameters, registering certificates with a CA, and checking certificate status.

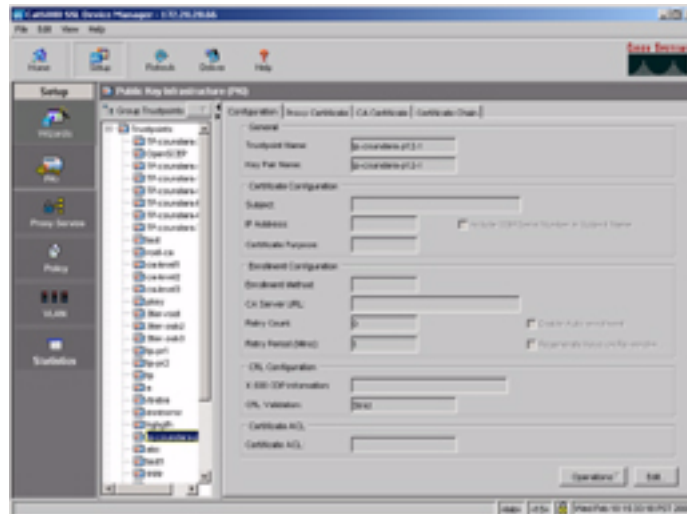
Figure 2
CiscoView Device Manager for the SSL Services Module Allows Users to Follow a Wizard-Based Configuration



CONFIGURING PKI MANAGEMENT

The SSL protocol relies on certificates and public-private key pairs to provide authentication, privacy, and data integrity for data transactions. Setting up the PKI on the SSL Services Module is a primary requirement for enabling SSL services. CiscoView Device Manager simplifies the management of PKI by assisting with trustpoint management and key-pair management.

Figure 3
Trustpoint Configuration



Trustpoint management allows users to view trustpoints and their certificates, configure trustpoints either by importing certificates in both Privacy-Enhanced Mail (PEM) and Public-Key Cryptography Standard (PKCS)12 formats or by defining a certificate and enrolling it with a CA. CA enrollment either can be manual or automated. For N-tier certificates, CiscoView Device Manager provides visualization of the certification chain. CiscoView Device Manager allows users to delete trustpoints and export certificates from them.

Key-pair management generates new RSA key pairs, exports key pairs from PKI, imports key pairs from external PKI systems, and deletes key pairs.

CONFIGURING VLAN MANAGEMENT

CiscoView Device Manager allows users to view and modify VLAN configurations, including the IP configuration.

CONFIGURING PROXY SERVICES

CiscoView Device Manager supports configuration of proxy services. This includes viewing the configured proxy service status, creating new proxy services, and assigning trustpoints and policies to these services.

CONFIGURING POLICY MANAGEMENT

CiscoView Device Manager supports defining policies for proxy services. Policy templates help administrators refine the attributes associated with the SSL and TCP stack to suit their needs. The policies supported by CiscoView Device Manager include:

- TCP policy—Refines the TCP connection parameters
- SSL policy—Refines the SSL session parameters
- URL rewrite
- HTTP header insertion

CONFIGURING NETWORK ADDRESS TRANSLATION

CiscoView Device Manager supports the configuration of client Network Address Translation (NAT) pools and supports the configuration of server NAT.

DYNAMIC SORTING AND GROUPING OF TRUSTPOINTS

Dynamic sorting and grouping is useful when several trustpoints are configured on an SSL Services Module. It allows users to group trustpoints by CA, certificate expiration date, or the current status of certificates. This helps users quickly to locate certificates that expire in a particular month, for example, or all trustpoints that use a particular CA.

Figure 4
Dynamic Sorting or Grouping of Trustpoints

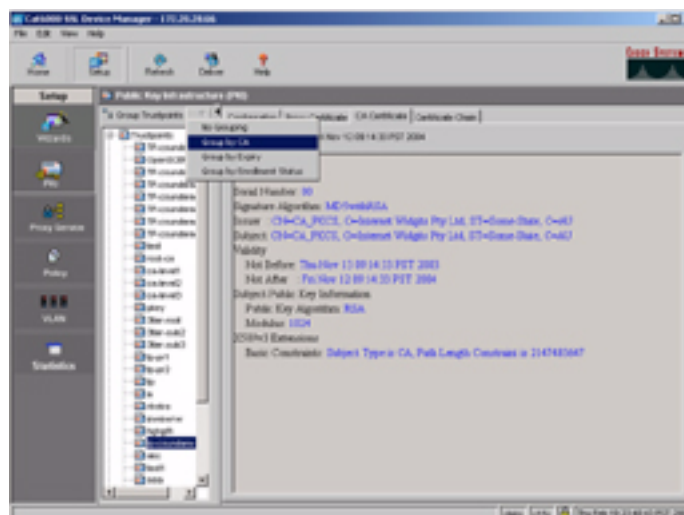


Table 1 SSL Features Supported

Feature Category	SSL Services Module Features	Comments	
Basic Setup	<ul style="list-style-type: none"> Administrative VLAN setup Remote access configuration 	Must be done from the console	
PKI	Declare trustpoints <ul style="list-style-type: none"> Simple Certificate Enrollment Protocol enrollment Manual enrollment 	Configuration	
	Import certificates to trustpoint <ul style="list-style-type: none"> PEM PKCS12 	—	
	Export certificates from trustpoint	—	
	View certificates associated with trustpoints	—	
	Client and server certificate authentication	Configuration	
	Certificate security attribute-based access control	Configuration only (no statistics support)	
	Generate key pairs	Configuration	
	Zeroize key pairs	—	
	Import and export key pairs	—	
	Proxy Service	Setup server proxy	—
		Setup client proxy and back-end encryption service	—
Policy	Setup TCP policy	—	
	Setup SSL policy	—	
	Setup URL rewrite policy	—	
	Setup HTTP header insertion policy	—	
NAT	NAT pool	Configuration	
—	VLAN modification	—	
Statistics	TCP	Basic statistics	
	SSL	Basic statistics	
	PKI	Basic statistics	

Table 2 System Specifications

Parameter	Specifications
Chassis	Catalyst 6503, Catalyst 6506, Catalyst 6509, Catalyst 6509 NEBS, 6509-NEBS-A, Catalyst 6513
Supervisor Engine Cards	Supervisor Engine IA, Supervisor Engine II, Supervisor Engine 720

Table 2 System Specifications

Parameter	Specifications
Client Operating System	Windows 2000 (Professional, Server) Service Pack 2 and Service Pack 3, Windows XP Service Pack 1; Solaris 2.8 and 2.9
Browsers	Internet Explorer 6.0 Service Pack 1 on Windows platforms. Netscape Navigator 7.0 on Solaris and 7.1 on Windows platforms
Java Plug-in	Java Plug-in 1.4.1_05
Memory Requirements	Requires minimum 2.5 MB of free Flash memory on the SSL Services Module
Recommended Connection Speed	56 Kbps or higher

Table 3 Cisco IOS® Software Release Support

Service	Cisco IOS Software Release	Software Release for Services Module
SSL Service Module (SSLSM)	12.1(13)E, 12.1(19)E, 12.2(14)SX1, 12.2(17A)SX1, 12.1(17B)SXA, 12.1(20)E	1.1(1), 1.2(1) and higher

**Corporate Headquarters**

Cisco Systems, Inc.
 170 West Tasman Drive
 San Jose, CA 95134-1706
 USA
 www.cisco.com
 Tel: 408 526-4000
 800 553-NETS (6387)
 Fax: 408 526-4100

European Headquarters

Cisco Systems International BV
 Haarlerbergpark
 Haarlerbergweg 13-19
 1101 CH Amsterdam
 The Netherlands
 www-europe.cisco.com
 Tel: 31 0 20 357 1000
 Fax: 31 0 20 357 1100

Americas Headquarters

Cisco Systems, Inc.
 170 West Tasman Drive
 San Jose, CA 95134-1706
 USA
 www.cisco.com
 Tel: 408 526-7660
 Fax: 408 527-0883

Asia Pacific Headquarters

Cisco Systems, Inc.
 168 Robinson Road
 #28-01 Capital Tower
 Singapore 068912
 www.cisco.com
 Tel: +65 6317 7777
 Fax: +65 6317 7799

Cisco Systems has more than 200 offices in the following countries and regions. Addresses, phone numbers, and fax numbers are listed on the Cisco Web site at www.cisco.com/go/offices

Argentina • Australia • Austria • Belgium • Brazil • Bulgaria • Canada • Chile • China PRC • Colombia • Costa Rica • Croatia Czech Republic • Denmark • Dubai, UAE • Finland • France • Germany • Greece • Hong Kong SAR • Hungary • India • Indonesia • Ireland Israel • Italy • Japan • Korea • Luxembourg • Malaysia • Mexico • The Netherlands • New Zealand • Norway • Peru • Philippines • Poland Portugal • Puerto Rico • Romania • Russia • Saudi Arabia • Scotland • Singapore • Slovakia • Slovenia • South Africa • Spain • Sweden Switzerland • Taiwan • Thailand • Turkey • Ukraine • United Kingdom • United States • Venezuela • Vietnam • Zimbabwe