

Element Manager Software for the Cisco Catalyst 6500 Series and Cisco 7600 Series

Product Overview

The Element Manager Software (EMS) for the Cisco Catalyst 6500 Series and the Cisco 7600 Series meets the current and future business requirements of service providers and enterprises, providing a robust management, deployment, and provisioning solution for Cisco Catalyst® 6500 Series switches and the Cisco 7600 Series. This software enhances the ability to deliver new, profitable IP-based services to customers while containing operating costs and improving service levels.

The Element Manager Software module leverages the Cisco Element Manager Framework (CEMF) version 3.2 to manage and monitor one or more Cisco Catalyst 6500 Switches or 7600s. Through an intuitive user interface, the EMS solution eases and accelerates deployment, enables efficient operation of large network environments, and streamlines the provisioning process. It also provides fault and element management for the Cisco Catalyst 6500 Series and Cisco 7600 without requiring detailed knowledge of the Cisco IOS® Software or Simple Network Management Protocol (SNMP).

Specifically, the EMS provides standard element management capabilities such as fault, configuration, accounting, performance, and security (FCAPS) for the Cisco Catalyst 6500 Series and Cisco 7600 Series. The EMS can be used via the CEMF GUI interface or through higher-level applications that access the EMS using Northbound (CORBA) interfaces provided by CEMF.

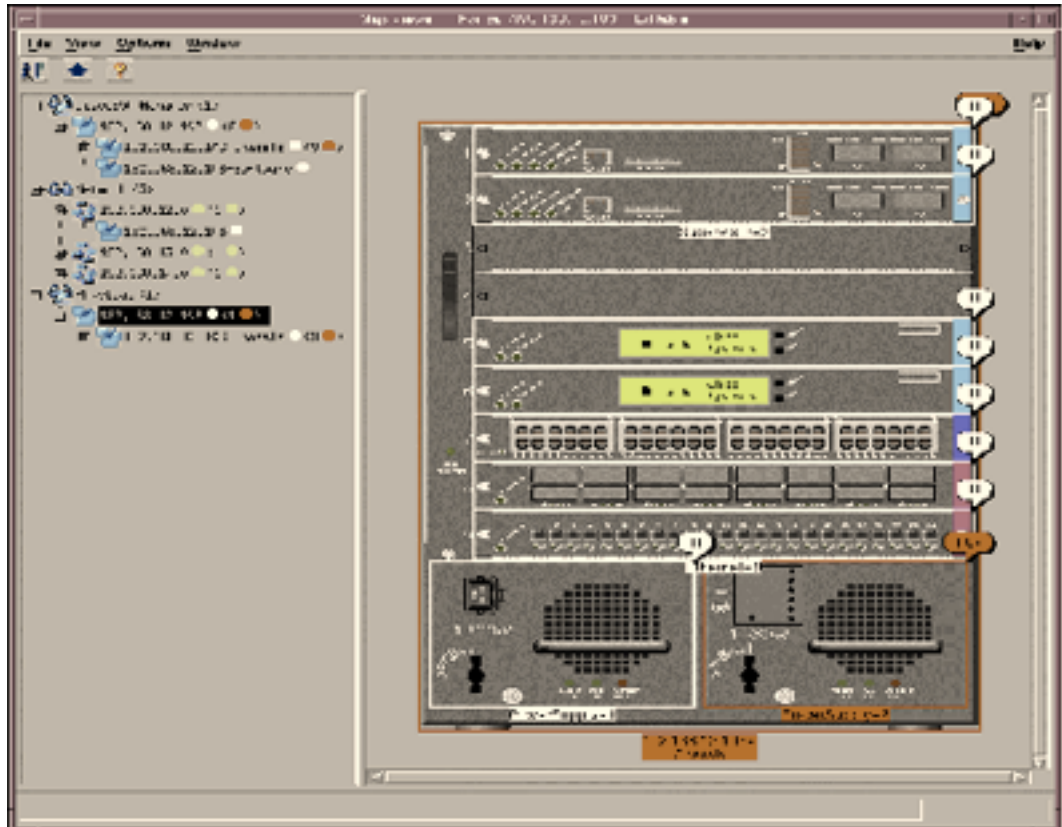
The EMS for the Cisco Catalyst 6500 Series and Cisco 7600 Series provides device-specific element management for the Cisco Catalyst 6500 Series and Cisco 7600 Series in the following areas:

- **Fault management**—Provides status updates on chassis, module, interfaces, and the mapping of system log (syslog) messages and MIB traps to alarms.
- **Configuration management**—Enables configuration of chassis IP details; provides the ability to download new versions of the Cisco IOS Software; enables configuration of virtual LANs (VLANs), VTP, EtherChannels, Border Gateway Protocol (BGP), Enhanced Interior Gateway Routing Protocol (EIGRP), and Open Shortest Path First (OSPF), Hot Routing Standby Routing Protocol (HSRP), IS-IS; and provides inventory details for chassis and modules.
- **Accounting**—Is delivered via third-party ecosystem partners and OSS vendors such as Portal, Belle, and Convergys.



- Performance monitoring—Provides statistics such as CPU and memory usage on the supervisor and backplane utilization.
- Security—Provides a flexible way to restrict access by user, group, and feature.

Figure 1
Physical View of the Cisco Catalyst 6500 Series

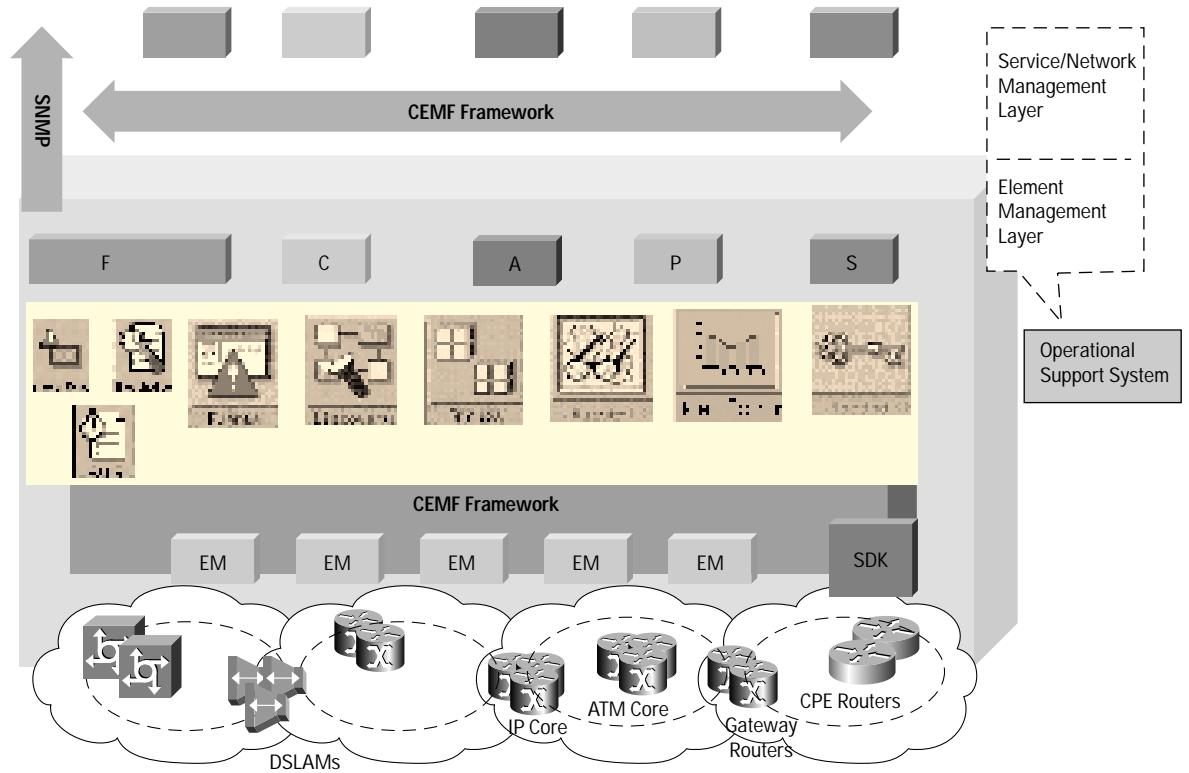




Product Solutions and Services

Figure 2

Cisco Element Management—Cisco Element Manager Framework with Individual Element Managers

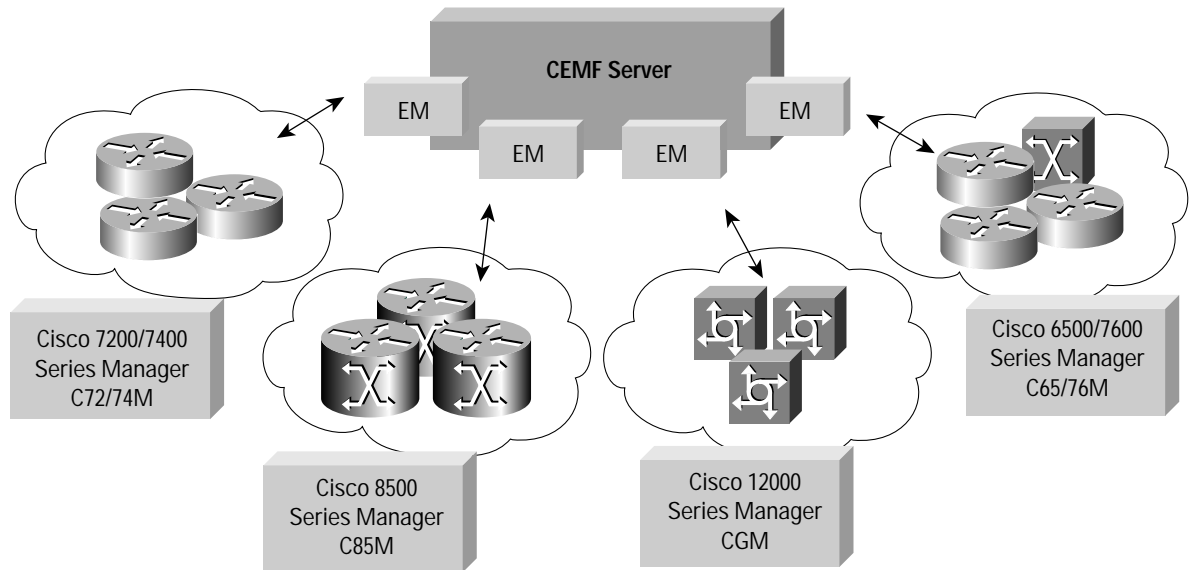


CEMF provides consistency and powerful event management across a common user interface.



Element Management Software—Cisco Catalyst 6500 Series and Cisco 7600 Series

- An application for managing a specific type of network device
- "Plugs" into CEMF and provides technology-specific functionality
- Interacts with users through GUIs and hooks into other CEMF applications



Product Specifications for C65/76M 2.0

Compatibility

- CEMF 3.2 and Solaris 2.8; CEMF 3.1 and Solaris 2.6
- Supports Cisco Catalyst 6500 or Cisco 7600 with the following Cisco IOS Software Releases
- Supervisor 1A with MSFC or MSFC2:
- 12.1(3a)E3 to 12.1(10)EX
 - EMS for the Cisco Catalyst 6500 Series and Cisco 7600 runs on Sun computer systems (workstations and servers)

Server System Requirements

- The EMS can be deployed in several different configurations, from a single hardware system to a multisite distributed management system.
 - Use Sun Ultra 60 or enterprise-class server such as Sun Enterprise 450, configured as follows:
 - 17-inch color monitor
 - 6 x 9 GB 10,000-rpm disks on three Ultra SCSI controllers
 - 2 GB memory per CPU (440-MHz processors for large scale)
 - 2 GB swap space
 - 24-bit Sun graphics card
 - Miscellaneous resources: CD-ROM drive, DAT tape backup
- Note:** For large-scale deployments, fault-tolerant options are available (for example, Sun Netra FT1800)



Product Specifications for C65/76M 2.0

Supported Line Cards

- WS-C6006-6 slot Cisco Catalyst 6000 series chassis
- WS-C6009-9 slot Cisco Catalyst 6000 series chassis
- WS-C6506-6 slot Cisco Catalyst 6500 series chassis
- WS-C6509-9 slot Cisco Catalyst 6500 series chassis
- WS-C6513-13 slot Cisco Catalyst 6500 series chassis
- OSR-7603-3 slot Cisco 7600 chassis
- OSR-7606-6 slot Cisco 7600 chassis
- OSR-7609-9 slot Cisco 7600 chassis
- WS-C6509-NEB Vertical 9-slot chassis
- WS-CAC-4000W 4000W AC power supply
- WS-CAC-2500W 2500W AC power supply
- WS-CDC-2500W 2500W DC power supply
- WS-CDC-1900W 1900W DC power supply
- WS-CAC-1900W 1900W AC power supply
- WS-CAC-1300W 1300W AC power supply
- WS-CDC-1300W 1300W DC power supply
- WS-CAC-1000W 1000W AC power supply
- WS-CAC-950W 950W AC power supply
- WS-CDC-950W 950W DC power supply
- WS-C6500-SFM Switch Fabric Module
- WS-C6500-SFM2 Switch Fabric Module 2
- WS-X6182-2PA
- WS-X6066-SLB-APC
- WS-X6K-SUP1A-MSFC Supervisor 1A with MSFC
- WS-X6K-S1A-MSFC2 Supervisor 1A with MSFC2
- WS-X6K-S2-MSFC Supervisor 2 with MSFC2
- WS-X6224-100FX-MT 24-port 100FX, MT-RJ
- WS-X6324-100FX-MM 24-port 100FX, MT-RJ, multimode fiber, 128k per port packet buffers
- WS-X6248-RJ-45 48-port 10/100TX, RJ-45
- WS-X6248-TEL 48-port 10/100TX, RJ-21
- WS-X6248A-TEL 48-port 10/100TX, RJ-21, 128K per port packet buffers
- WS-X6348-RJ-45 48-port 10/100TX, RJ-45, 128k per port packet buffers
- WS-X6348-RJ45V 48-port 10/100TX, RJ-45, 128k per port packet buffers with inline power
- WS-X6408-GBIC 8-port Gigabit Ethernet
- WS-X6408A-GBIC 8-port Gigabit Ethernet with enhanced quality of service (QoS)
- WS-X6416-GBIC 16-port Gigabit Ethernet
- WS-X6416-GE-MT 16-port Gigabit Ethernet, MT-RJ
- WS-X6416-GE-MT 16-port Gigabit Ethernet, single fabric-enabled connection
- WS-X6316-GE-TX 16-port Gigabit Ethernet, RJ-45
- WS-X6501-10GEX4
- WS-X6816-GBIC
- WS-X6516-GE-TX
- WS-X6524-100FX-MM
- WS-X6548-RJ21



Product Specifications for C65/76M 2.0

- WS-X6548-RJ45
- WS-X6348-RJ21(V)
- OSM-4GE-WAN-GBIC
- OSM-1CHOC48/T3-SS
- OSM-1CHOC48/T3-SI
- OSM-2CHOC48/T3-SI
- OSM-2CHOC48/T3-SS
- OSM-4CHOC12/T3-SI
- OSM-8CHOC12/T3-SI
- OSM-10C48-POS-SI
- OSM-10C48-POS-SL
- OSM-10C48-POS-SS
- OSM-20C12-POS-MM
- OSM-20C12-POS-SI
- OSM-20C12-POS-SL
- OSM-40C12-POS-MM
- OSM-40C12-POS-SI
- OSM-40C12-POS-SL
- OSM-80C3-POS-MM
- OSM-80C3-POS-SI
- OSM-80C3-POS-SL
- OSM-16OC3-POS-MM
- OSM-16OC3-POS-SI
- OSM-16OC3-POS-SLPA-2E3
- PA-2H
- PA-2T3
- PA-2T3+
- PA-4T+
- PA-8T-232
- PA-8T-V35
- PA-8T-X21
- PA-A3-E3
- PA-A3-OC3MM
- PA-A3-OC3SMI
- PA-A3-OC3SML
- PA-A3-T3
- PA-SAN-FC1
- PA-E3
- PA-H
- PA-MC-2T3+
- PA-MC-8E1/120
- PA-MC-8T1
- PA-MC-E3
- PA-MC-T3
- PA-POS-OC3MM
- PA-POS-OC3SMI
- PA-POS-OC3SML



Product Specifications for C65/76M 2.0

	<ul style="list-style-type: none">• PA-T3
	<ul style="list-style-type: none">• PA-T3+WS-C6006 6-slot Cisco Catalyst 6000 series chassis
Supported Line Cards	<ul style="list-style-type: none">• WS-C6009 9-slot Cisco Catalyst 6000 series chassis

Availability and Ordering Information

Product Descriptions	Part Number
Cisco 6500/7600 Series Manager 2.0 CD+Doc Set and CEMF 3.2 CD+Doc set	EMS-65-76-KIT-2.0=
Management license for 5 Cisco Catalyst 6500 chassis and Cisco 7600 chassis (spare part number that appears as an option under chassis ordering)	EMS-65-76-005-2.0 =
Management license for 25 Cisco Catalyst 6500 chassis and Cisco 7600 chassis (spare part number that appears as an option under chassis ordering)	EMS-65-76-025-2.0=
Management license for 100 Cisco Catalyst 6500 chassis and Cisco 7600 chassis (spare part number that appears as an option under chassis ordering)	EMS-65-76-100-2.0=
Management license for an unlimited number Cisco Catalyst 6500 and Cisco 7600 chassis (spare part number that appears as an option under chassis ordering)	EMS-65-76-UNL-2.0 =



Corporate Headquarters
Cisco Systems, Inc.
170 West Tasman Drive
San Jose, CA 95134-1706
USA
www.cisco.com
Tel: 408 526-4000
800 553-NETS (6387)
Fax: 408 526-4100

European Headquarters
Cisco Systems Europe
11 Rue Camille Desmoulins
92782 Issy-les-Moulineaux
Cedex 9
France
www-europe.cisco.com
Tel: 33 1 58 04 60 00
Fax: 33 1 58 04 61 00

Americas Headquarters
Cisco Systems, Inc.
170 West Tasman Drive
San Jose, CA 95134-1706
USA
www.cisco.com
Tel: 408 526-7660
Fax: 408 527-0883

Asia Pacific Headquarters
Cisco Systems, Inc.
Capital Tower
168 Robinson Road
#22-01 to #29-01
Singapore 068912
www.cisco.com
Tel: +65 317 7777
Fax: +65 317 7799

Cisco Systems has more than 200 offices in the following countries and regions. Addresses, phone numbers, and fax numbers are listed on the
Cisco Web site at www.cisco.com/go/offices

Argentina • Australia • Austria • Belgium • Brazil • Bulgaria • Canada • Chile • China PRC • Colombia • Costa Rica • Croatia
Czech Republic • Denmark • Dubai, UAE • Finland • France • Germany • Greece • Hong Kong SAR • Hungary • India • Indonesia • Ireland
Israel • Italy • Japan • Korea • Luxembourg • Malaysia • Mexico • The Netherlands • New Zealand • Norway • Peru • Philippines • Poland
Portugal • Puerto Rico • Romania • Russia • Saudi Arabia • Scotland • Singapore • Slovakia • Slovenia • South Africa • Spain • Sweden
Switzerland • Taiwan • Thailand • Turkey • Ukraine • United Kingdom • United States • Venezuela • Vietnam • Zimbabwe

All contents are Copyright © 1992–2002, Cisco Systems, Inc. All rights reserved. CCIP, the Cisco *Powered* Network mark, the Cisco Systems Verified logo, Cisco Unity, Fast Step, Follow Me Browsing, FormShare, Internet Quotient, iQ Breakthrough, iQ Expertise, iQ FastTrack, the iQ logo, iQ Net Readiness Scorecard, Networking Academy, ScriptShare, SMARTnet, TransPath, and Voice LAN are trademarks of Cisco Systems, Inc.; Changing the Way We Work, Live, Play, and Learn, Discover All That's Possible, The Fastest Way to Increase Your Internet Quotient, and iQuick Study are service marks of Cisco Systems, Inc.; and Aironet, ASIST, BPX, Catalyst, CCDA, CCDP, CCIE, CCNA, CCNP, Cisco, the Cisco Certified Internetwork Expert logo, Cisco IOS, the Cisco IOS logo, Cisco Press, Cisco Systems, Cisco Systems Capital, the Cisco Systems logo, Empowering the Internet Generation, Enterprise/Solver, EtherChannel, EtherSwitch, GigaStack, IOS, IP/TV, LightStream, MGX, MICA, the Networkers logo, Network Registrar, *Packet*, PIX, Post-Routing, Pre-Routing, RateMUX, Registrar, SlideCast, StrataView Plus, Stratm, SwitchProbe, TeleRouter, and VCO are registered trademarks of Cisco Systems, Inc. and/or its affiliates in the U.S. and certain other countries.

All other trademarks mentioned in this document or Web site are the property of their respective owners. The use of the word partner does not imply a partnership relationship between Cisco and any other company.
(0201R) LW3021 03/02