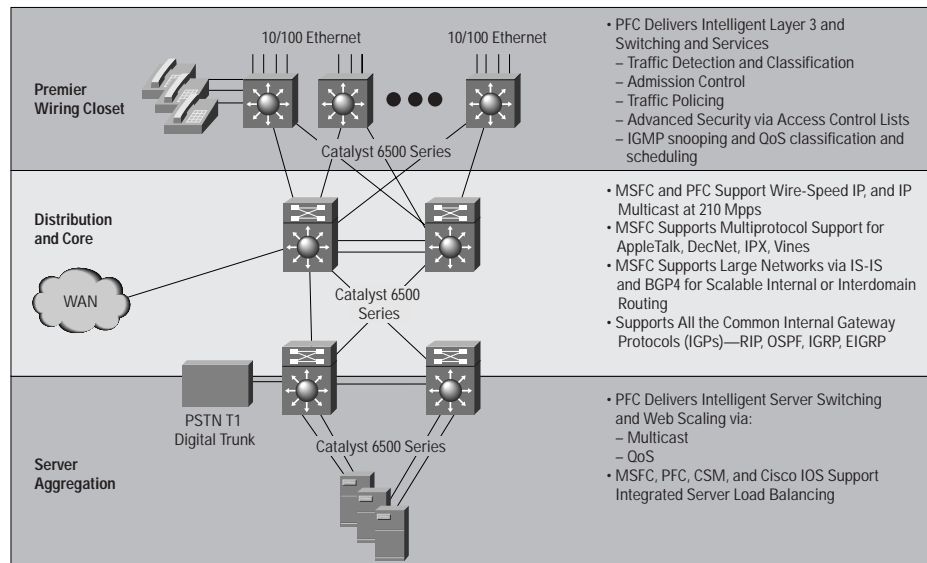


Catalyst 6500 Series Quick Look

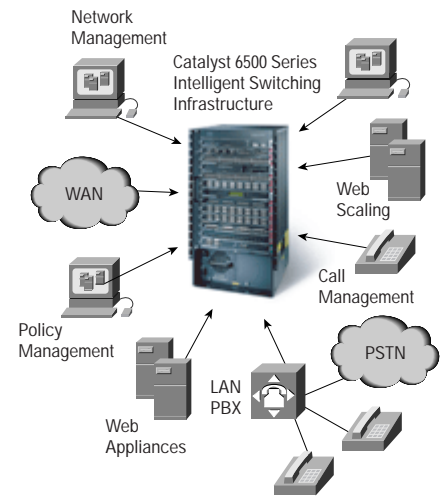
High-performance, multilayer switches optimized for the most demanding Enterprise and Service Provider applications. The Catalyst 6500 series is the foundation for secure converged network services providing data and voice integration, LAN/WAN/Metro consolidation, and intelligent multilayer switching in core, distribution, datacenter, and wiring closet topologies.

Compare the Features

Catalyst 6500 Series delivers the security and high availability needed for mission critical applications or converged data/voice/video networks.



Catalyst 6500 Series Addresses New World Networking through Functional Integration



- Six, nine or thirteen-slot modular chassis Catalyst 6506, 6509, 6513 and a NEBS level 3 compliant version of the 6509
- High-availability design throughout the system
- 32-Gbps integrated switching fabric, upgradeable to 256Gbps with crossbar Switch Fabric Module
- 15-30Mpps of L3 forwarding using Supervisor I/II respectively, scales to over 210Mpps of IP traffic with Distributed CEF forwarding architecture and DFC cards.
- Maximum 10/100 Ethernet port density: 240 (six-slot chassis) and 384 (nine-slot chassis) and 576 (13 Slot Chassis)
- Maximum Gigabit Ethernet port density: 82 (six-slot chassis) and 130 (nine-slot chassis) and 194 (13-slot chassis)
- EtherChannel[®] aggregation, load balancing, and fail-over on every port, even across modules for high availability applications.
- 10 Gigabit Ethernet with Serial 1550nm (40k) or Serial 1310nm (10k) 1-port modules
- Intelligent multilayer switching
- Extensive quality of service (QoS), security, VLAN, and multicast support
- Full interoperability with other Catalyst switches and Cisco routers
- Enhanced Security & network management through IDS and NAM Modules
- L5-7 Content Switching services with high-performance Content Switching Module.
- Wide range of multiprotocol WAN modules from T1/E1, T3/E3, through OC-48, ATM, POS/SDH, POS/DPT.



Key Benefits	When to Buy
<ul style="list-style-type: none"> • Application-aware networking with multilayer switching intelligence and fully integrated QoS feature support for application prioritization. • High-availability features deliver maximum uptime for mission-critical application support <ul style="list-style-type: none"> – Hitless software upgrades – Stateful supervisor failover and 2-3 second stateful failover • Investment protection in a high-density and scalable platform. • Interoperability with other Cisco Catalyst switches and standards-compliant, third-party hardware • Broad support for network services through Cisco IOS® technologies • CEF Technology scales performance linearly, even in a flow-intensive environment 	<p>Buy the Catalyst 6500 Series when you require:</p> <ul style="list-style-type: none"> • A highly available and scalable platform that will meet the most demanding requirements in any topology. The high availability, flexibility of interfaces, and scalable system architecture allow the Catalyst 6500 to be deployed in the datacenter, core, distribution, wiring closet, and WAN aggregation enterprise and service provider topologies. <p>Catalyst 6500 series solutions:</p> <ul style="list-style-type: none"> • Enterprise campus core and distribution—With industry-leading port densities, performance, and high availability solutions to keep business critical applications available and performing. • Server aggregation—For Gigabit wire-speed access to mission-critical server farms while providing security at wire-rate. Leveraging the Content Switching Module the Catalyst 6500 fully integrates L4-7 Load Balancing capabilities. • High-capacity wiring closets—In mission critical and large deployments, the Catalyst 6500 Series delivers advanced Layer 2, 3, and 4 switching in wiring closets, as well as fully integrated inline power as a standard component on all 10/100 interfaces • WAN/LAN/MAN integration—A single integrated platform simplifies network design, decreases rack space requirements, and decreases overall administration costs

How the Catalyst 6500 Series Stacks Up

Ordering Information	
Chassis and Power Supplies	Catalyst 6500 Series
WS-C6506 Catalyst 6506 chassis	
WS-C6509 Catalyst 6509 chassis	
WS-C6509-NEB Catalyst 6509 chassis for NEBS environments	
WS-C6513 Catalyst 6513 Chassis	
WS-CAC-1000W Catalyst 6000 1000W AC power supply	
WS-CAC-1300W Catalyst 6000 1300W AC power supply	
WS-CDC-1300W Catalyst 6000 1300W DC power supply	
WS-CAC-2500W Catalyst 6000 2500W AC Power Supply	
WS-CAC4000W Catalyst 6500 4000W Power Supply	



Ordering Information

Catalyst 6500 Series Supervisors Modules	SMARTnet Maintenance
<ul style="list-style-type: none"> WS-X6K-SUP1A-2GE Catalyst 6000 Supervisor Engine1-A, Enhanced QoS, 2 Gigabit Ethernet (Requires GBICs) WS-X6K-S1A-MSFC2 Supervisor Engine 1A for Catalyst 6500 Series, two Gigabit Ethernet uplinks, enhanced QoS, supports MSFC2 and PFC WS-X6K-S2-PFC2 Supervisor Engine 2 for Catalyst 6500 Series, two Gigabit Ethernet uplinks, fabric enabled, supports fabric-enabled GE modules, enhanced QoS, Standard PFC2, supports MSFC2 	<ul style="list-style-type: none"> CON-SNT-WS-C6006 SMARTnet 8x5xnb CON-SNTE-WS-C6006 SMARTnet 8x5x4 CON-SNTP-WS-C6006 SMARTnet 24x7x4 CON-OS-WS-C6006 SMARTnet Onsite 8x5xnb CON-OSE-WS-C6006 SMARTnet Onsite 8x5x4 CON-OSP-WS-C6006 SMARTnet Onsite 24x7x4 CON-SNT-WS-C6009 SMARTnet 8x5xnb CON-SNTE-WS-C6009 SMARTnet 8x5x4 CON-SNTP-WS-C6009 SMARTnet 24x7x4
<ul style="list-style-type: none"> WS-X6K-S2-MSFC2 Supervisor Engine 2 for Catalyst 6500 Series, two Gigabit Ethernet uplinks, fabric enabled, supports fabric-enabled GE modules, Enhanced QoS, PFC2, MSFC2 WS-X6K-S2U-MSFC2 Supervisor Engine 2 for Catalyst 6500 Series, two Gigabit Ethernet uplinks, fabric enabled, supports fabric-enabled GE modules. Enhanced QoS, PFC2, MSFC2. Required for Cisco IOS on Supervisor Engine 2 WS-C6500-SFM Catalyst 6500 Switch Fabric Module WS-X6500-SFM2 Catalyst 6500 Switch Fabric Module 2 WS-F6K-DFC= Catalyst 6500 Distributed Forwarding Card (DFC) for WS-X6516-GBIC, WS-X6548-RJ-45, WS-X6548-RJ-21, or WS-X6548-RJ-45 WS-F6K-MSFC2= Catalyst 6000 Multilayer Switch Feature Card (MSFC)II, Spare <p>10/100 Ethernet Modules</p> <ul style="list-style-type: none"> WS-X6024-10FL-MT Catalyst 6000 24-port 10BaseFL MT-RJ module WS-X6148-RJ45V Cisco Catalyst 6500 48-port 10/100 Inline Power, RJ-45 WS-X6148-RJ21V Cisco Catalyst 6500 48-port 10/100 Inline Power, RJ-21(Telco) WS-X6324-100FX-MM Catalyst 6000 24-port 100FX, Enh QoS, MT-RJ, MMF WS-X6324-100FX-SM Catalyst 6000 24-port 100FX, Enh QoS, MT-RJ, SMF WS-X6248A-TEL Catalyst 6000 48-port 10/100, enhanced QoS, Telco WS-X6348-RJ-45 Catalyst 6000 48-port 10/100, upgradeable to voice, enhanced QoS WS-X6416-GE-MT Catalyst 6000 16-port Gig-Ethernet module MT-RJ WS-X6408A-GBIC Catalyst 6000 8-port Gigabit Ethernet, enhanced QoS (Requires GBICs) WS-X6416-GBIC Catalyst 6000 16-port Gigabit Ethernet module (Requires GBICs) WS-X6348-RJ45V Catalyst 6000 48-port 10/100, Inline Power, RJ-45 WS-X6548-RJ-45 Catalyst 6500 fabric-enabled 48-port 10/110 RJ45, field-upgradeable to support distributed forwarding with the addition of the Distributed Forwarding daughter card (WS-F6K-DFC=) WS-X6548-RJ-21 Catalyst 6500 fabric-enabled 48-port 10/110 RJ21 (telco), Inline Power Ethernet module, field-upgradeable to support distributed forwarding with the addition of the Distributed Forwarding daughter card (WS-F6K-DFC=) WS-F6K-VPWR= Catalyst 6000 Voice Power Feature Card for WS-X6348-RJ-45 	<ul style="list-style-type: none"> CON-OS-WS-C6009 SMARTnet Onsite 8x5xnb CON-OSE-WS-C6009 SMARTnet Onsite 8x5x4 CON-OSP-WS-C6009 SMARTnet Onsite 24x7x4 CON-SNT-WS-C6506 SMARTnet 8x5xnb CON-SNTE-WS-C6506 SMARTnet 8x5x4 CON-SNTP-WS-C6506 SMARTnet 24x7x4 CON-OS-WS-C6506 SMARTnet Onsite 8x5xnb CON-OSE-WS-C6506 SMARTnet Onsite 8x5x4 CON-OSP-WS-C6506 SMARTnet Onsite 24x7x4 CON-SNT-WS-C6509 SMARTnet 8x5xnb CON-SNTE-WS-C6509 SMARTnet 8x5x4 CON-SNTP-WS-C6509 SMARTnet 24x7x4 CON-OS-WS-C6509 SMARTnet Onsite 8x5xnb CON-OSE-WS-C6509 SMARTnet Onsite 8x5x4 CON-OSP-WS-C6509 SMARTnet Onsite 24x7x4 <p>Software</p> <ul style="list-style-type: none"> CON-SNT-C6509WCB SMARTnet 8x5xNBD Svc, Cat6509 wiring closet bundle * CON-SNTE-C6509WCB SMARTnet 8x5x4 Svc, Cat6509 wiring closet bundle * CON-SNTP-C6509WCB SMARTnet 24x7x4 Svc, Cat6509 wiring closet bundle * CON-OS-C6509WCB SMARTnet Onsite 8x5xNBD Svc, Cat6509 wiring closet bundle * CON-OSE-C6509WCB SMARTnet Onsite 8x5x4 Svc, Cat6509 wiring closet bundle * CON-OSP-C6509WCB SMARTnet Onsite 24x7x4 Svc, Cat6509 wiring closet bundle * <p><i>* exclusively available to new Catalyst 6500 wiring closet bundles.</i></p>



Ordering Information

Catalyst 6500 Modules	Software
<p>Gigabit Ethernet</p> <ul style="list-style-type: none"> • WS-X6316-GE-TX Catalyst 6000 16-port 1000TX GE Mod., RJ-45 • WS-X6516-GBIC Catalyst 6500 16-port GigE (Fabric Enabled) (Requires GBICs) • WS-X6816-GBIC Catalyst 6500 16-port GigE with DFC (Fabric Enabled) (Requires GBICs) • WS-X6524-100FX-MM 24-port, fabric-enabled 100FX Module for the Cisco Catalyst 6500 Series Switches; field-upgradable to support distributed forwarding with the addition of the Distributed Forwarding daughter card (WS-F6K-DFC=) • WS-G6488 Catalyst 6500 10GBASE-LR Serial 1310nm long haul OIM (SMF) • WS-X6502-10GE Catalyst 6500 10 Gigabit Ethernet Base Module (Req. OIM) • WS-G6488 Catalyst 6500 10GBASE-LR Serial 1310nm long haul OIM (SMF) • WS-6483 Cat 6500 10GBASE-ER Serial 1550nm extended reach OIM (SMF) <p>Advanced Services Modules</p> <ul style="list-style-type: none"> • WS-X6380-NAM Catalyst 6000 Network Analysis Module • WS-X6381-IDS Catalyst 6000 Intrusion Detection System • WS-X6624-FXS Catalyst 6000 24 port FXS Analog Station Interface Module • WS-X6608-T1 Catalyst 6000 8 port Voice T1 and Services Module • WS-X6608-E1 Catalyst 6000 8 port Voice E1 and Services Module <p>WAN Modules</p> <ul style="list-style-type: none"> • WS-X6101-OC12-MMF Catalyst 6000 1-port multimode OC-12 ATM module • WS-X6101-OC12-SMF Catalyst 6000 1-port single-mode OC-12 ATM module • OSM-4GE-WAN-GBIC 4-port Gigabit Ethernet Optical Services Module • OSM-1CHOC48/T3-SS One-Port Singlemode Short Reach OC48 to T3 with 4 Gigabit Ethernet • OSM-2OC12-POS-MM 2-port OC-12/STM-4 SONET/SDH OSM, MM with 4 GE • OSM-2OC12-POS-SI 2-port OC-12/STM-4 SONET/SDH OSM, SM-IR with 4 GE • OSM-2OC12-POS-SL 2-port OC-12/STM-4 SONET/SDH OSM, SM-LR with 4 GE • OSM-4OC12-POS-MM 4-port OC-12/STM-4 SONET/SDH OSM, MM with 4 GE • OSM-4OC12-POS-SI 4-port OC-12/STM-4 SONET/SDH OSM, SM-IR with 4 GE • OSM-4OC12-POS-SL 4-port OC-12/STM-4 SONET/SDH OSM, SM-LR with 4 GE 	<p>Catalyst OS (CatOS)</p> <ul style="list-style-type: none"> • SC6K-SUP2K8-7.2.2 Cisco Catalyst 6000 Supervisor 2 Flash Image, Release 7.2.2 • SC6K-SUP2K9-7.2.2 Cisco Catalyst 6000 Supervisor 2 Flash Image w/SSH, Release 7.2.2 • SC6K-SUP2CV-6.3.1 Cat6K Supervisor 2 Flash Image w/ CiscoView, Release 6.3.1 • SC6K-SCVK9-6.3.1 Catalyst 6000 Supervisor 1Flash Image w/ CiscoView & SSH, Release 6.3.1 <p>Cisco IOS Running on Supervisor (aka Native)</p> <ul style="list-style-type: none"> • S6S12AV-12111E Cisco Catalyst 6000 Supervisor 1/MSFC2 IOS Enterprise Software Release 12.1(11b)E • S6S12ZV-12111E Cisco Catalyst 6000 Supervisor 1/MSFC2 IOS Service Provider Software Release 12.1(11b)E • S6S22AV-12111E Cisco Catalyst 6000 Supervisor 2/MSFC2 IOS Enterprise Software Release 12.1(11b)E • S6S22ZV-12111E Cisco Catalyst 6000 Supervisor 2/MSFC2 IOS Service Provider Release 12.1(11b)E • S6S12AV-12111EX Cisco Catalyst 6000 Supervisor 1/MSFC2 IOS Enterprise Software Release 12.1(11b)EX • S6S12ZV-12111EX Cisco Catalyst 6000 Supervisor 1/MSFC2 IOS Service Provider Software Release 12.1(11b)EX • S6S22AV-12111EX Cisco Catalyst 6000 Supervisor 2/MSFC2 IOS Enterprise Software Release 12.1(11b)EX • S6S22ZV-12111EX Cisco Catalyst 6000 Supervisor 2/MSFC2 IOS Service Provider Software Release 12.1(11b)EX • S6S12AV-12108EX Cisco Catalyst 6000 Supervisor 1/MSFC2 IOS Enterprise Software Release 12.1(8)EX • S6S12ZV-12108EX Cisco Catalyst 6000 Supervisor 1/MSFC2 IOS Service Provider Software Release 12.1(8)EX • S6S22AV-12108EX Cisco Catalyst 6000 Supervisor 2/MSFC2 IOS Enterprise Software Release 12.1(8)EX • S6S22ZV-12108EX Cisco Catalyst 6000 Supervisor 2/MSFC2 IOS Service Provider Software Release 12.1(8)EX • FR-IRC6 Catalyst 6000 Inter-Domain Routing feature License • FR-C6FW Catalyst 6000 family IOS Firewall Feature Set • FR-IOSSLB Catalyst 6000 Supervisor IOS SLB Feature License • WS-C6x06-EMS-LIC Catalyst 6X06 RMON agent license • WS-C6x09-EMS-LIC Catalyst 6X09 RMON agent license

Catalyst 6500 Series Supervisors and Line Card Modules

- OSM-4OC12-POS-SI 4-port OC-12/STM-4 SONET/SDH OSM, SM-IR with 4 GE *T3/E3 & STM-1 Port Adapters*
- OSM-4OC12-POS-SL 4-port OC-12/STM-4 SONET/SDH OSM, SM-LR with 4 GE
- OSM-4OC3-POS-SI 4-port OC-3/STM-1 SONET/SDH OSM, SM-IR with 4 GE
- OSM-8OC3-POS-MM 8-port OC-3/STM-1 SONET/SDH OSM, MM with 4 GE
- OSM-8OC3-POS-SI 8-port OC-3/STM-1 SONET/SDH OSM, SM-IR with 4 GE
- OSM-8OC3-POS-SL 8-port OC-3/STM-1 SONET/SDH OSM, SM-LR with 4 GE
- OSM-16OC3-POS-MM 16-port OC-3/STM-1 SONET/SDH OSM, MM with 4 GE
- OSM-16OC3-POS-SI 16-port OC-3/STM-1 SONET/SDH OSM, SM-IR with 4 GE
- OSM-16OC3-POS-SL 16-port OC-3/STM-1 SONET/SDH OSM, SM-LR with 4 GE
- OSM-10C48-POS-SS 1-port OC-48c/STM-1 SONET/SDH OSM, SM-SR with 4 GE
- OSM-10C48-POS-SI 1-port OC-48c/STM-1 SONET/SDH OSM, SM-IR with 4 GE
- OSM-10C48-POS-SL 1-port OC-48/STM-1c SONET/SDH OSM, SM-LR with 4 GE
- WS-X6182-2PA Catalyst 6000 FlexWAN module (supports up to 2 Cisco 7200/7500 port adapters listed below)

Supported 7200/7500 Series WAN Port Adapters

T1/E1 Port Adapters

- PA-4T+
- PA-8T-V35
- PA-8T-232
- PA-8T-X21
- PA-MC-4T1
- PA-MC-8T1
- PA-MC-8E1/120

- PA-T3
- PA-T3+
- PA-E3
- PA-2T3
- PA-2T3+
- PA-2E3
- PA-MC-T3
- PA-MC-E3
- PA-MC-STM-1

HSSI

- PA-H
- PA-2H

ATM

- PA-A3-T3
- PA-A3-E3
- PA-A3-OC3MM
- PA-A3-OC3SMI
- PA-A3-OC3SML

Packet over SONET (POS)

- PA-POS-OC3MM
- PA-POS-OC3SMI
- PA-POS-OC3SML



Corporate Headquarters
Cisco Systems, Inc.
170 West Tasman Drive
San Jose, CA 95134-1706
USA
www.cisco.com
Tel: 408 526-4000
800 553-NETS (6387)
Fax: 408 526-4100

European Headquarters
Cisco Systems Europe
11 Rue Camille Desmoulins
92782 Issy-les-Moulineaux
Cedex 9
France
www-europe.cisco.com
Tel: 33 1 58 04 60 00
Fax: 33 1 58 04 61 00

Americas Headquarters
Cisco Systems, Inc.
170 West Tasman Drive
San Jose, CA 95134-1706
USA
www.cisco.com
Tel: 408 526-7660
Fax: 408 527-0883

Asia Pacific Headquarters
Cisco Systems, Inc.
Capital Tower
168 Robinson Road
#22-01 to #29-01
Singapore 068912
www.cisco.com
Tel: +65 317 7777
Fax: +65 317 7799

Cisco Systems has more than 200 offices in the following countries and regions. Addresses, phone numbers, and fax numbers are listed on the
Cisco Web site at www.cisco.com/go/offices

Argentina • Australia • Austria • Belgium • Brazil • Bulgaria • Canada • Chile • China PRC • Colombia • Costa Rica • Croatia
Czech Republic • Denmark • Dubai, UAE • Finland • France • Germany • Greece • Hong Kong SAR • Hungary • India • Indonesia • Ireland
Israel • Italy • Japan • Korea • Luxembourg • Malaysia • Mexico • The Netherlands • New Zealand • Norway • Peru • Philippines • Poland
Portugal • Puerto Rico • Romania • Russia • Saudi Arabia • Scotland • Singapore • Slovakia • Slovenia • South Africa • Spain • Sweden
Switzerland • Taiwan • Thailand • Turkey • Ukraine • United Kingdom • United States • Venezuela • Vietnam • Zimbabwe

All contents are Copyright © 1992-2002, Cisco Systems, Inc. All rights reserved. Cisco, Cisco IOS, Cisco Systems, the Cisco Systems logo, and EtherChannel are registered trademarks of Cisco Systems, Inc. and/or its affiliates in the U.S. and certain other countries.

All other trademarks mentioned in this document or Web site are the property of their respective owners. The use of the word partner does not imply a partnership relationship between Cisco and any other company.
(0203R)
02