

Catalyst 5000 Supervisor Engine I Memory Upgrade

Overview

This memory upgrade provides an additional 16 MB of DRAM memory, providing a total of 20 MB available for use on the Catalyst 5000 Supervisor Engine I models (WS-X5005/WS-X5006/WS-X5009).

This Product Bulletin describes how to identify Supervisor modules and explains which memory upgrades should be ordered for different revisions of the Supervisor Engine I. Two 16-MB Single Inline Memory Modules (SIMMs) are offered, a custom SIMM for earlier Supervisor revisions up to and including Revision 1.6 and a standard SIMM for Supervisors produced after Revision 1.6. The document concludes with questions and answers about the Supervisor module upgrade.

Identifying Supervisor Modules

Supervisor Engine I modules with a hardware version number of 1.6 or lower require the custom SIMM memory upgrade, while hardware version 1.7 and above require the standard SIMM upgrade. Customers can easily identify Catalyst 5000 supervisor modules that require the custom SIMM memory upgrade using one of the following three methods.

Command Line Interface (CLI) Method

Using the **show version** command on the Catalyst 5000 command line interface, users can identify the hardware version of the Catalyst 5000 supervisor module as shown in Table 1.

CLI Command Method

```
c5000-3-lnd> show ver
WS-C5000 Software, Version McpSW: 1.417 NmpSW: 1.417
Copyright (c) 1995 by Cisco Systems
NMP S/W compiled on Dec 15 1995, 17:58:17
MCP S/W compiled on Dec 15 1995, 18:09:14
System Bootstrap Version: 1.3
Hardware Version: 1.402 Model: WS-X5009 Serial #: 000102694
4096K bytes of DRAM memory.
4096K bytes of FLASH memory.
128K bytes of non-volatile configuration memory.
```

Table 1 Hardware versions of the Catalyst 5000 supervisor module

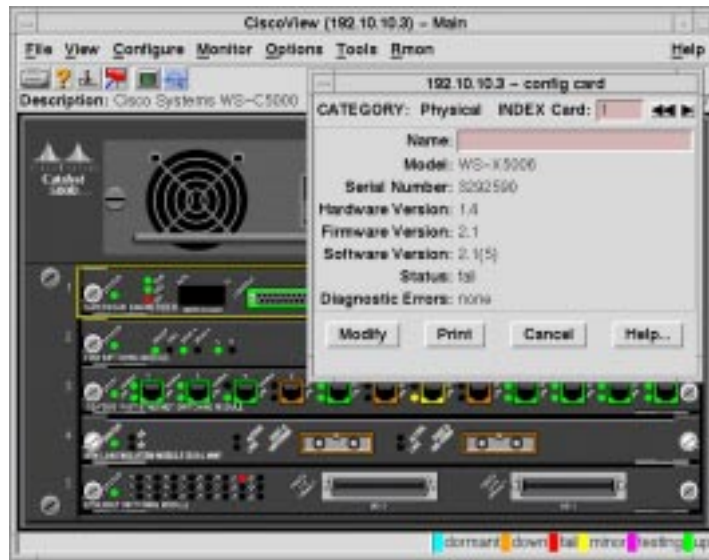
Module	Ports	Model	Serial #	Hw	Fw	Fwl	Sw
1	2	WS-x5009	000102694	1.402	1.3	1.3	1.417
3	24	Ws-C5000	000129133	1.301	1.3	—	1.417

The example in Figure 1 has a Supervisor module (WS-X5009) with a hardware revision level of 1.402 and would require the custom SIMM upgrade, because the Supervisor hardware revision level is 1.6 or lower.

CiscoView Method

By highlighting the Supervisor module and then selecting the Configure menu selection and choosing Card, users can quickly identify the supervisor hardware revision using CiscoView™ as shown in Figure 1.

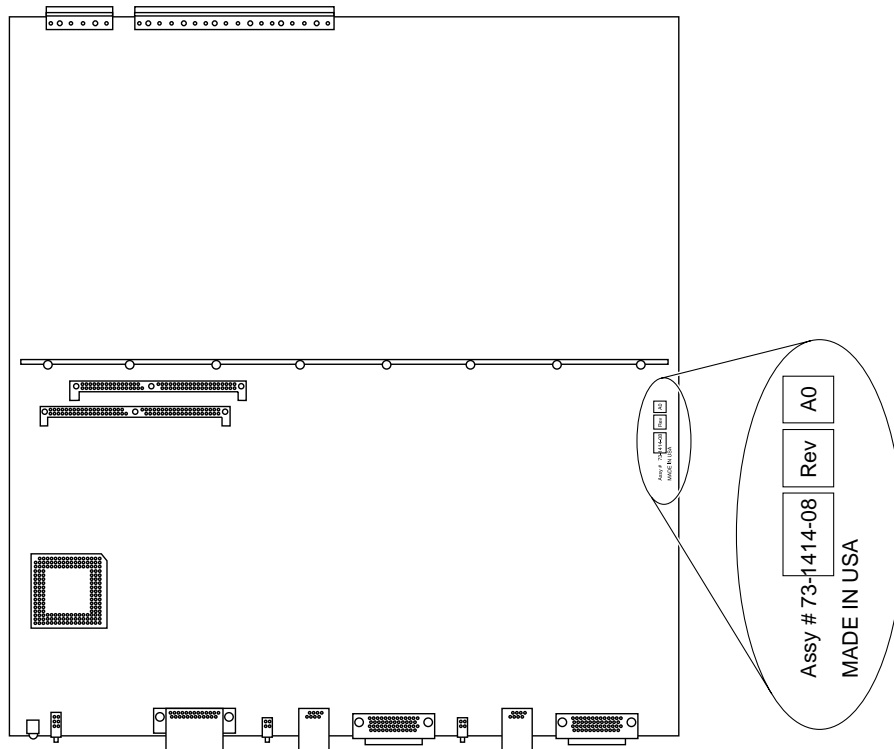
Figure 1 The example in Figure 1 has a Supervisor module (WS-X5009) with a hardware revision level of 1.402 and would require the custom SIMM upgrade, because the Supervisor hardware revision level is 1.6 or lower.



Supervisor Physical Inspection Method

The third method for identifying Supervisor hardware revision levels is by physical inspection of the module. The proper procedure for removing and inspecting the Catalyst 5000 Supervisor module is explained in Cisco document number 78-3988-01, *Catalyst 5000 16-MB Single Inline Memory Module Upgrade Configuration Note*. The location of the Supervisor assembly revisions is illustrated in Figure 2.

Figure 2 Supervisor Assembly Level



Supervisor assembly revisions up to and including 73-1414-08, Revision A0, require the custom SIMM upgrade. Supervisor assembly revisions 73-1414-09 and above require the standard SIMM to upgrade. In the example shown in Figure 2, the Supervisor assembly requires the custom SIMM because its revision level is 73-1414-08, Revision A0.

Questions and Answers

Q. Can customers purchase their own SIMMs and upgrade their Supervisor modules?

A. For Catalyst Supervisor hardware revisions up to and including 1.6 (or assembly revisions up to and including 73-1414-08) which require the custom SIMM supplied by this upgrade, the answer is no. Hardware revisions later than 1.6 require the standard SIMM. Customers with later revision hardware will have the option of purchasing the SIMMS from third-party sources, but Cisco does not recommend doing so. Since only qualified parts are certain to meet specific system timing requirements, using third-party sources may present a higher degree of risk to normal operations.

Q. How much memory will the Supervisor module have after the upgrade?

A. After the installation of this upgrade, the Supervisor module will have 20 MB.

Additional Documentation

“Catalyst 5000 16 MB Single In-Line Memory Module Upgrade Configuration Note.” Doc No. 78-3988-01

Ordering Information

Table 2 Memory Upgrade Ordering Information

Product Number	Description
MEM-C5K-16M-Custom=	Catalyst 5000 Custom Memory Upgrade
MEM-C5K-16M=	Catalyst 5000 Memory Upgrade



Corporate Headquarters

Cisco Systems, Inc.
170 West Tasman Drive
San Jose, CA 95134-1706
USA

<http://www.cisco.com>
Tel: 408 526-4000
800 553-NETS (6387)
Fax: 408 526-4100

European Headquarters

Cisco Systems Europe s.a.r.l.
Parc Evolic, Batiment L1/L2
16 Avenue du Quebec
Villebon, BP 706
91961 Courtaboeuf Cedex
France

<http://www-europe.cisco.com>
Tel: 33 1 6918 61 00
Fax: 33 1 6928 83 26

Americas

Headquarters
Cisco Systems, Inc.
170 West Tasman Drive
San Jose, CA 95134-1706
USA

<http://www.cisco.com>
Tel: 408 526-7660
Fax: 408 527-0883

Asia Headquarters

Nihon Cisco Systems K.K.
Fuji Building, 9th Floor
3-2-3 Marunouchi
Chiyoda-ku, Tokyo 100
Japan

<http://www.cisco.com>
Tel: 81 3 5219 6250
Fax: 81 3 5219 6001

Cisco Systems has more than 200 offices in the following countries. Addresses, phone numbers, and fax numbers are listed on the Cisco Connection Online Web site at <http://www.cisco.com>.

Argentina • Australia • Austria • Belgium • Brazil • Canada • Chile • China (PRC) • Colombia • Costa Rica • Czech Republic • Denmark
England • France • Germany • Greece • Hungary • India • Indonesia • Ireland • Israel • Italy • Japan • Korea • Luxembourg • Malaysia
Mexico • The Netherlands • New Zealand • Norway • Peru • Philippines • Poland • Portugal • Russia • Saudi Arabia • Scotland • Singapore
South Africa • Spain • Sweden • Switzerland • Taiwan, ROC • Thailand • Turkey • United Arab Emirates • United States • Venezuela