

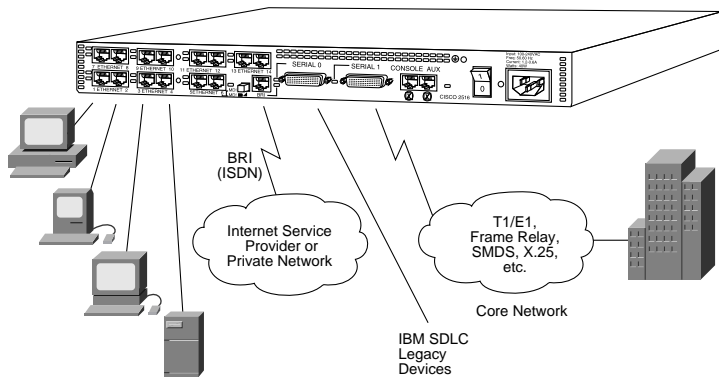
Data Sheet

Cisco 2505, Cisco 2507, Cisco 2516

The Cisco 2505, 2507, and 2516 are fully integrated hub/routers that enable remote offices to provide both LAN and internetwork connectivity. These hub/routers combine the functions of a stand-alone hub and router in one chassis to provide simpler setup, improved serviceability and reliability, and integrated remote Simple Network Management Protocol (SNMP) network management.

Cisco 2516: ISDN Port Enables High-Speed, Low-Cost WAN Access

The Cisco 2516 includes an Integrated Services Digital Network (ISDN) Basic Rate Interface (BRI) port, allowing dial-up, high-speed access up to 128 kilobits per second (kbps). In addition, through the BRI port, dial-up access is provided for backup or for low-cost, high-speed connectivity to private or public internetworks. The two high-speed, synchronous serial WAN interfaces on each model deliver unprecedented flexibility, enabling access to leased lines, packet- and circuit-switched services, as well as support of



Cisco 2500 Family of Hub/Routers

Two serial ports on the Cisco 2516 enable remote offices to support local SDLC devices, as well as high-speed access to core locations. The ISDN BRI port provides cost-effective connections to public or private networks using dial-up lines.

legacy systems such as IBM Synchronous Data Link Control (SDLC) devices.

All models use low-cost, unshielded twisted-pair cable wired in a star configuration for easy installation and offer from 8 (Cisco 2505), 14 (Cisco 2516), or 16 (Cisco 2507) Ethernet 10BaseT hub ports. No hub-to-router cabling is required—everything is neatly contained in one compact desktop, rack-, or wall-mounted chassis. The switch-selectable media dependent interface/hub interface (MDI/MDI-X) on the Cisco 2516 allows easy expansion by enabling additional units to be daisy-chained together using one of the 10BaseT ports.

Central Network Management Eliminates Need for Remote Site Expertise

Cisco's hub/routers are easily managed from a central site using the CiscoWorks™ graphical network management applications. Rather than managing a router and hub separately, CiscoWorks manages each hub/router with one consistent user interface. In addition, managers at central sites can:

- Configure hub ports using CiscoWorks. This suite of management applications automatically "learns" the model and hardware configuration of the device and provides a hub port configuration window.
- Graphically depict the router and hub physical configuration, including interface and port descriptions.
- Depict the status of interfaces and ports to easily identify problems at a glance.
- Troubleshoot routine problems, including resetting a port or interface and gathering traffic statistics.

Cisco Internetwork Operating System Feature Sets

Cisco 2500 hub/routers can be ordered with any of seven Cisco Internetwork Operating Systems™ (Cisco IOS) feature sets. They range from low-cost, IP-specific feature sets to Enterprise (EN) sets that contain the full Cisco IOS™ protocol suite. Each set includes Cisco's unique AutoInstall capability, the "plug-and-play" router feature that allows rapid, economical router installation with minimal expertise at remote sites.

Breadth of Software Functionality Delivers Cost Savings

Cisco 2500 hub/routers are available with a range of software features that deliver significant savings on transmission costs. Dial-on-demand routing (DDR) facilitates use WAN links only when necessary. This reduces the cost of wide-area access and makes efficient use of ISDN or serial dial-up lines as alternatives to costly leased lines. The Cisco 2500 family of hub/routers also supports link compression for up to 128 kbps with Link Access Procedure, Balanced (LAPB) encapsulation, X.25 payload compression, and Frame Relay header compression.

Dial backup provides a more economical solution than a second leased line when users require a backup link for disaster recovery. If access over the primary WAN link fails, the second dial-up line

is automatically brought on line. This feature also supports the activation of a second line for load-share traffic if the primary link becomes congested.

Cisco 2500 Hub/Router Family

Cisco 2505	Cisco 2507	Cisco 2516
8 Ethernet Ports	16 Ethernet Hub Ports	14 Ethernet Hub Ports
		1 MDI/MDI-X Switch
2 Sync. Serial	2 Sync. Serial	2 Sync. Serial
		1 ISDN BRI
1 Low-Speed Async. Serial	1 Low-Speed Async. Serial	1 Low-Speed Async. Serial
1 Console	1 Console	1 Console

Hardware Specifications

- Dimensions (height x width x depth): 1.75 x 17.5 x 10.6 in (4.44 x 44.45 x 28.62 cm)
- Weight: 10 lb (4.5 kg)
- Connectors: RJ-45 for 10BaseT (UTP), V.35, EIA/TIA-232, -449, -530, X.21 (Cisco 2505, 2507, 2516), RJ-45 for ISDN BRI (Cisco 2516)

Environmental Specifications

- Operating temperature range: 32° to 104° F (0° to 40° C)
- Nonoperating temperature range: -40° to 185° F (-40° to 85° C)
- Humidity: 5% to 95%, noncondensing
- Power consumption: 40 watts max (135.5 Btu/hour)
- Input: 100 to 240 VAC, universal, 1.0 amp @ 100V
- Frequency: 50 to 60 Hz
- Agency Approvals: UL 1950, CSA 22.2 through 950, EN 60950, EN 41003, BABT, AUSTEL (AS3260, AST001), TÜV-GS mark, FCC Class A, VDE 0878 Part 3 and 30, Class B, CISPR 22 Class B, VCCI Class 2 (Japan), NFC 98020 (France), CE Mark (Europe), IEC 801-2, 3, 4, 5, 6
- Main Processor: MC 68030, 4 or 8 megabytes (MB) Flash memory*, 2, 4, or 6 MB DRAM* (expandable to 16 MB Flash, up to 18 MB DRAM)
- Serial Interfaces: V.35, EIA 530, RS-232, RS-449, X.21, NRZ, NRZI, DTE or DCE (DTE only for EIA 530). Two high-speed serial interfaces. Compatible with leased lines, circuit-switched, and packet-switched services. Speeds up to 4 Mbps.
- ISDN Interface (Cisco 2516 only): Basic Rate (2 B channels and 1 D channel)
- Packet-Switched Interfaces: Frame Relay, X.25, X.25 DDN, SMDS

* *Dependent upon IOS feature set ordered*

Corporate Headquarters

Cisco Systems, Inc.
170 West Tasman Drive
San Jose, CA 95134-1706
USA
Tel: 408 526-4000
800 553-NETS (6387)
Fax: 408 526-4100

European Headquarters

Cisco Systems Europe s.a.r.l.
Z.A. de Courtaboeuf
16 avenue du Quebec
91961 Les Ulis Cedex
France
Tel: 33 1 6918 61 00
Fax: 33 1 6928 83 26

European Offices

Austria
Tel: 43 1 71110 6233
Fax: 43 1 71110 6017
USA
Belgium
Tel: 32 2 778 42 00
Fax: 32 2 778 43 00
Denmark
Tel: 45 33 37 71 57
Fax: 45 33 37 71 53
Germany
Tel: 49 89 32 15070
Fax: 49 89 32 150710
Italy
Tel: 39 2 62 726 43
Fax: 39 2 62 729 13
The Netherlands
Tel: 31 18 30 22988
Fax: 31 18 30 22404

Norway

Tel: 47 22 83 06 31
Fax: 47 22 83 22 12

Spain

Tel: 34 1 57 203 60
Fax: 34 1 57 045 99

Sweden

Tel: 46 8 681 41 60
Fax: 46 8 19 04 24

Switzerland

Tel: 41 55 93 22 66
Fax: 41 55 95 64 14

United Arab Emirates
Tel: 971 4 313712
Fax: 971 4 313493

United Kingdom
Tel: 44 81 81 81 400
Fax: 44 81 89 32 824

Intercontinental Headquarters

Asia, Australia, Canada, Latin America, Mexico, New Zealand
Cisco Systems, Inc.
170 West Tasman Drive
San Jose, CA 95134-1706 USA
Tel: 408 526-7660
Fax: 408 526-4646

Asia

Hong Kong
Tel: 852 583 9110
Fax: 852 824 9528

Beijing

Tel: (861) 501 8888 X820
Fax: (861) 501 3333 X820

Korea

Tel: (82 2) 551 2730
Fax: (82 2) 551 2710

Singapore

Tel: 65 320-8350
Fax: 65 320-8307

Taipei, Taiwan, R.O.C.

Tel: 886 2 545 0039
Fax: 886 2 719 4537

Regional Offices

Argentina
Tel: 54 1 814 1391
Fax: 54 1 814 1846

Australia
Tel: 61 2 957 4944
Fax: 61 2 957 4077

Brazil
Tel: 55 11 822-5413
Fax: 55 11 853-3104

Canada
Tel: 416 217-8000
Fax: 416 217-8099

Latin America
Tel: 408 526-7660
Fax: 408 526-4646

Mexico

Tel: 525 628 1239
Fax: 525 628 1212
New Zealand
Tel: 64 9 358 3776
Fax: 64 9 358 4442

Japanese Headquarters

Nihon Cisco Systems K.K.
Seito Kaikan 4F
5, Sanbancho, Chiyoda-ku
Tokyo 102, Japan
Tel: 81 3 5211 2800
Fax: 81 3 5211 2810

Cisco Systems has over 100 sales offices worldwide. Call 408 526-4000 to contact your local account representative or, in North America, call 800 553-NETS (6387).