

Cisco Router Web Setup Tool (CRWS)

Simple Setup for Cisco SOHO Series and 800 Series Broadband Routers

The Cisco Router Web Setup tool (CRWS) provides a graphical user interface (GUI) for configuring Cisco SOHO series and 800 series routers, allowing users to set up their routers quickly and easily. Users without the knowledge to configure a supported Cisco router with the Cisco IOS® Software command line interface (CLI) can use the CRWS to configure the router in just a few simple steps. By utilizing this tool, Cisco SOHO and 800 series customers can leverage the power of Cisco IOS Software without having the technical skills typically needed for router configuration.

CRWS gives users direct access to:

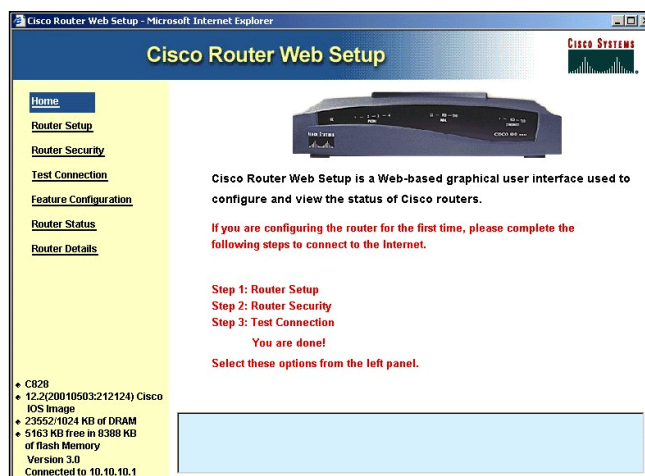
- Simplified Setup
- Advanced Configuration Features (NAT, port filtering, DNS, etc.)
- Security including Firewall and VPNs
- Router Monitoring

Additionally, CRWS is available in English, German, and French simply by using a pull down menu and selecting a language.

Simplified Setup - With Autodetect of WAN Perimeters
 Users can configure supported Cisco routers in just a few simple steps, without technical expertise. First, users connect provided cables, power on the router, and point a browser to the router. Users then enter some individual information and choose between multiple configuration options. For users that don't know the answers to these questions, CRWS will automatically detect the encapsulation and/or PVC. This patented technology is unique to this tool and utilizes the debugging capabilities of Cisco IOS.

The CRWS completes the configuration process, sending the working configuration to the router. CRWS automatically detects the encapsulation of the line, whether it is PPPoE, PPPoA or bridged eliminating the need for the user to determine this configuration setting. CRWS will also auto-detect the VPI/VCI required by the service provider.

Figure 1
 Cisco Router Web Setup Tool





Advanced Configuration Features

CRWS gives users the power to set up advanced configurable router functions. This allows users flexibility in how the router will function in the networks it is connected to. These functions include:

- NAT/PAT
- DHCP Server/Relay
- Firewall
- Voice-over IP dial plans (Cisco 827-4V router)
- Changing the LAN addresses, and at the same time reconfiguring the DHCP server
- Cisco Easy VPN configuration and tunnel login (if needed)

Security

With an always-on broadband connection, network security must be addressed. Cisco routers provide many standard and optional security features to keep the router and the network safe from unauthorized access. The CRWS tool lets users assign a name and password for the router, to prevent tampering with the router's configuration. Additionally, Network Address Translation (NAT) can be enabled, allowing users on the LAN to share one common public IP address while the router assigns private addresses, keeping individual users from being seen by the outside world. The optional Stateful Inspection Firewall can also be enabled through the tool, allowing users to block certain types of inbound and outbound application traffic. For models that support VPNs, the new

Cisco Easy VPN feature allows users to configure a VPN connection to a Cisco Easy VPN Server without complicated preshared keys or configuration steps. Users simply use CRWS to enter in VPN configuration information such as user name and password and the router then establishes a VPN connection to the main office.

Figure 2
Cisco Router Web Setup Tool - Quick Setup

Cisco Router Web Setup

Enter the following security information.

Router Security

Router Name:

* Please remember this router name. You will need to enter this router name in the user name field the next time you launch this program.

Read-Only Password:

Confirm Read-Only Password:

Read/Write (Enable) Password:

Confirm Read/Write (Enable) Password:

** Please remember this password. You will need to enter this password the next time you launch this program.

Router Security is second step necessary to configure your router. Enter the parameters that prevent unauthorized access to the router configuration. When these parameters are submitted to the router, you will be asked to use this information to log into the router.

Home
Router Setup
Router Security
Test Connection
Feature Configuration
Router Status
Router Details

C828
12-2(20010503:212124) Cisco
IOS image
23552/1024 KB of DRAM
5163 KB free in 8388 KB of flash Memory
Version 3.0
Connected to 10.10.10.1



Router Monitoring

With CRWS, users can use the following features to monitor a router through a browser:

- Interface Summary—shows the configuration of the LAN and WAN ports, and if the ports are active (up/down)
- System Information—provides details on which Cisco IOS image the router is running, how much memory/Flash is installed, and so on
- DSL or WAN Statistics—explains all information about the ATM or Ethernet WAN interface such as up/down and IP address (the Cisco SOHO series routers have DSL WAN ports; the Cisco 806 and Cisco 830 series routers have an Ethernet WAN port)
- Show Commands—allows users with knowledge of the Cisco IOS CLI to enter IOS SHOW commands, such as: show running config, show tech, show ip
- Show VPN tunnel status (up/down/login)

Figure 3
Cisco Router Web Setup Tool Router Monitoring

The screenshot shows the Cisco Router Web Setup interface. The main content area is titled "Interface Summary" and displays the following information:

Interface Summary displays the status of the LAN/WAN interface, Up or Down. It also gathers the details of the LAN/WAN interface, such as the IP address, VPI/VCI numbers, and the DHCP server information configured on the router.

LAN SUMMARY

Interface Status	:	up
Interface IP Address	:	10.10.10.1
Interface Subnet Mask	:	255.255.255.0
DHCP Server Enabled	:	Yes
DHCP Network Address	:	10.10.10.0
Default Router	:	10.10.10.1
DHCP Lease	:	1 Day
Primary DNS Server	:	Not configured
Secondary DNS Server	:	Not configured

WAN SUMMARY

Router Details:

- C828
- 12.2(20010503:212124) Cisco IOS Image
- 23552/1024 KB of DRAM
- 5163 KB free in 8388 KB of flash Memory
- Version 3.0
- Connected to 10.10.10.1

A small image of the router is shown above the summary table. A green square is visible over the LAN port, indicating it is up.

Availability

The CRWS is supported on all Cisco SOHO series and 800 series routers shipped after April 2001. Users can also download a copy of Cisco Connection Online at:

<http://www.cisco.com/go/CRWS>

Additional Information

For more information on Cisco 800 Series routers:

<http://www.cisco.com/go/800>

For more information on Cisco SOHO Series routers:

<http://www.cisco.com/go/SOHO70>

CISCO SYSTEMS



Corporate Headquarters
Cisco Systems, Inc.
170 West Tasman Drive
San Jose, CA 95134-1706
USA
www.cisco.com
Tel: 408 526-4000
800 553-NETS (6387)
Fax: 408 526-4100

European Headquarters
Cisco Systems Europe
11 Rue Camille Desmoulins
92782 Issy-les-Moulineaux
Cedex 9
France
www-europe.cisco.com
Tel: 33 1 58 04 60 00
Fax: 33 1 58 04 61 00

Americas Headquarters
Cisco Systems, Inc.
170 West Tasman Drive
San Jose, CA 95134-1706
USA
www.cisco.com
Tel: 408 526-7660
Fax: 408 527-0883

Asia Pacific Headquarters
Cisco Systems, Inc.
Capital Tower
168 Robinson Road
#22-01 to #29-01
Singapore 068912
www.cisco.com
Tel: +65 317 7777
Fax: +65 317 7799

Cisco Systems has more than 200 offices in the following countries and regions. Addresses, phone numbers, and fax numbers are listed on the

Cisco Web site at www.cisco.com/go/offices

Argentina • Australia • Austria • Belgium • Brazil • Bulgaria • Canada • Chile • China PRC • Colombia • Costa Rica • Croatia
Czech Republic • Denmark • Dubai, UAE • Finland • France • Germany • Greece • Hong Kong SAR • Hungary • India • Indonesia • Ireland
Israel • Italy • Japan • Korea • Luxembourg • Malaysia • Mexico • The Netherlands • New Zealand • Norway • Peru • Philippines • Poland
Portugal • Puerto Rico • Romania • Russia • Saudi Arabia • Scotland • Singapore • Slovakia • Slovenia • South Africa • Spain • Sweden
Switzerland • Taiwan • Thailand • Turkey • Ukraine • United Kingdom • United States • Venezuela • Vietnam • Zimbabwe

All contents are Copyright © 1992–2002, Cisco Systems, Inc. All rights reserved. CCIP, the Cisco *Powered* Network mark, the Cisco Systems Verified logo, Cisco Unity, Follow Me Browsing, FormShare, Internet Quotient, iQ Breakthrough, iQ Expertise, iQ FastTrack, the iQ logo, iQ Net Readiness Scorecard, Networking Academy, ScriptShare, SMARTnet, TransPath, and Voice LAN are trademarks of Cisco Systems, Inc.; Changing the Way We Work, Live, Play, and Learn, Discover All That's Possible, The Fastest Way to Increase Your Internet Quotient, and iQuick Study are service marks of Cisco Systems, Inc.; and Aironet, ASIST, BPX, Catalyst, CCDA, CCDP, CCIE, CCNA, CCNP, Cisco, the Cisco Certified Internetwork Expert logo, Cisco IOS, the Cisco IOS logo, Cisco Press, Cisco Systems, Cisco Systems Capital, the Cisco Systems logo, Empowering the Internet Generation, Enterprise/Solver, EtherChannel, EtherSwitch, Fast Step, GigaStack, IOS, IP/TV, LightStream, MGX, MICA, the Networkers logo, Network Registrar, *Packet*, PIX, Post-Routing, Pre-Routing, RateMUX, Registrar, SlideCast, StrataView Plus, Stratm, SwitchProbe, TeleRouter, and VCO are registered trademarks of Cisco Systems, Inc. and/or its affiliates in the U.S. and certain other countries.

All other trademarks mentioned in this document or Web site are the property of their respective owners. The use of the word partner does not imply a partnership relationship between Cisco and any other company.
(0203R) 04/02 LDI-3947 ms 12/13/02