

# ISM over VDLC Configuration Relationships

This scenario illustrates the basic CiscoWorks Blue Internetwork Status Monitor (ISM) over virtual data-link control (VDLC) configuration of the routers and relates the router configurations to the XCA Major Node and the Switched Major Node definitions in Virtual Telecommunications Access Method (VTAM). Figure 1 and Figure 2 show the network setup for ISM over VDLC test. Figure 3 details the relationships between configuration parameters (the OS/390 Input/Output Configuration Program [IOCP] generation commands were removed to improve readability). In this scenario, the Channel Interface Processor (CIP) connects to the host via an ESCON Director and the routers are connected by a serial link. This document assumes knowledge of the command structure but not the parameter relationships.

Figure 1 ISM over VDLC Network Scenario

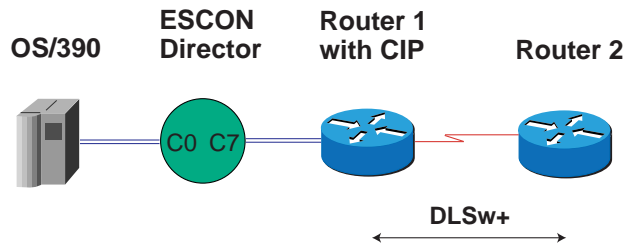


Figure 2 Logical View of ISM over VDLC

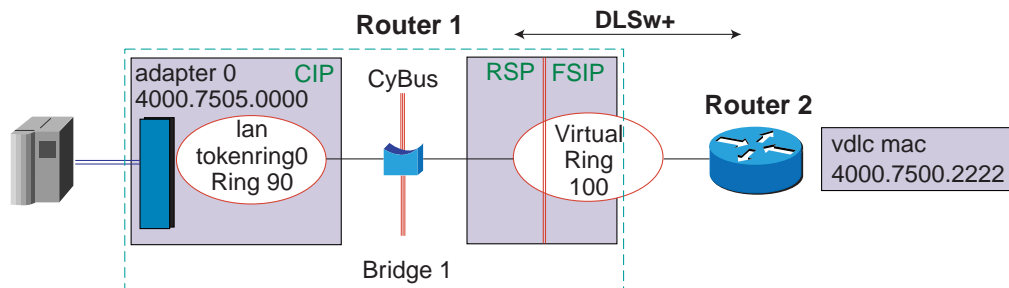
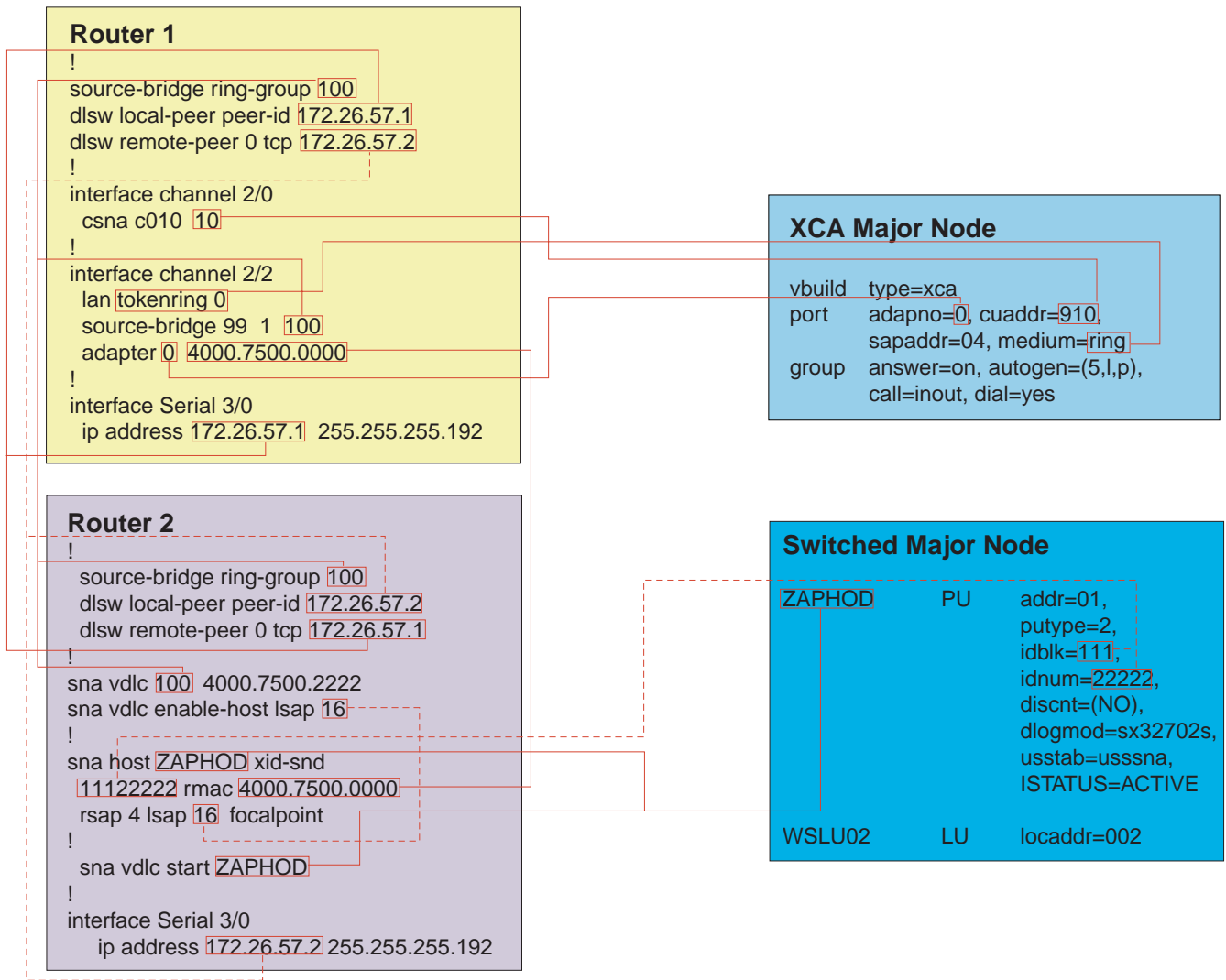


Figure 3 ISM over VDLC Parameter Relationships





**Corporate Headquarters**

Cisco Systems, Inc.  
170 West Tasman Drive  
San Jose, CA 95134-1706  
USA  
<http://www.cisco.com>  
Tel: 408 526-4000  
800 553-NETS (6387)  
Fax: 408 526-4100

**European Headquarters**

Cisco Systems Europe  
11, Rue Camille Desmoulins  
92782 Issy Les Moulineaux  
Cedex 9  
France  
<http://www-europe.cisco.com>  
Tel: 33 1 58 04 60 00  
Fax: 33 1 58 04 61 00

**Americas  
Headquarters**

Cisco Systems, Inc.  
170 West Tasman Drive  
San Jose, CA 95134-1706  
USA  
<http://www.cisco.com>  
Tel: 408 526-7660  
Fax: 408 527-0883

**Asia Headquarters**

Nihon Cisco Systems K.K.  
Fuji Building, 9th Floor  
3-2-3 Marunouchi  
Chiyoda-ku, Tokyo 100  
Japan  
<http://www.cisco.com>  
Tel: 81 3 5219 6250  
Fax: 81 3 5219 6001

**Cisco Systems has more than 200 offices in the following countries. Addresses, phone numbers, and fax numbers are listed on the  
Cisco Connection Online Web site at <http://www.cisco.com/go/offices>.**

Argentina • Australia • Austria • Belgium • Brazil • Canada • Chile • China • Colombia • Costa Rica • Croatia • Czech Republic • Denmark • Dubai, UAE  
Finland • France • Germany • Greece • Hong Kong • Hungary • India • Indonesia • Ireland • Israel • Italy • Japan • Korea • Luxembourg • Malaysia  
Mexico • The Netherlands • New Zealand • Norway • Peru • Philippines • Poland • Portugal • Puerto Rico • Romania • Russia • Saudi Arabia • Singapore  
Slovakia • Slovenia • South Africa • Spain • Sweden • Switzerland • Taiwan • Thailand • Turkey • Ukraine • United Kingdom • United States • Venezuela

Copyright © 2000, Cisco Systems, Inc. All rights reserved. Printed in the USA. Cisco, Cisco Systems, and the Cisco Systems logo are registered trademarks of Cisco Systems, Inc. or its affiliates in the U.S. and certain other countries. All other trademarks mentioned in this document are the property of their respective owners. The use of the word partner does not imply a partnership relationship between Cisco and any of its resellers. (9912R) SPS 4/00