



CHAPTER 1

Overview

Cisco 2700 series location appliances operate within the Cisco Unified Wireless Network (CUWN) infrastructure. Location appliances compute, collect, and store historical location data using Cisco wireless LAN controllers and access points to track the physical location of wireless devices. Up to 2,500 laptop clients, palmtop clients, VoIP telephone clients, active Radio Frequency Identifier (RFID) asset tags, rogue access points and clients can be tracked.

The collected location data can be viewed in GUI format in the Cisco Wireless Control System (WCS), the centralized WLAN management platform.

However, before you can use Cisco WCS, initial configuration for the location server is required using a command-line (CLI) console session. Details are described in the *Cisco 2700 Series Location Appliance Installation and Configuration Guide*.

You can find the latest version of this manual online at:

http://www.cisco.com/en/US/products/ps6386/prod_installation_guides_list.html

The following sections describe the main topics covered in this guide:

- “Display of Location Data” section on page 1-2
- “Event Notification” section on page 1-2
- “Configuration and Administration” section on page 1-3
- “Configuration and Administration” section on page 1-3
- “Monitoring Capability” section on page 1-3
- “Maintenance Operations” section on page 1-4
- “Compatibility Matrix” section on page 1-4

Display of Location Data

After it is configured, each location server communicates directly with the Cisco wireless LAN controllers to which it was assigned to collect operator-defined location data. You can then use the associated Cisco WCS server to communicate with each location server to transfer and display selected data.

You can configure location appliances to collect data for Cisco Wireless LAN Solution clients, rogue access points, rogue clients, mobile stations, and active RFID asset tags at separate intervals which you define.

Event Notification

Location servers provide the functionality for sending event notifications to registered listeners over the following transport mechanisms:

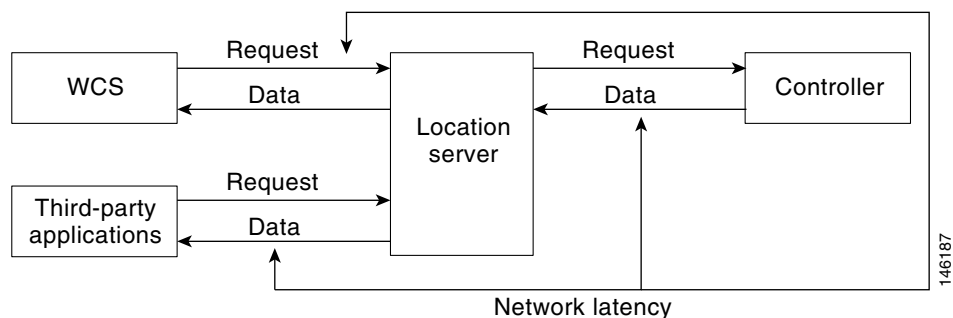
- Simple Object Access Protocol (SOAP)
- Simple Mail Transfer Protocol (SMTP) mail
- Simple Network Management Protocol (SNMP)
- SysLog


Note

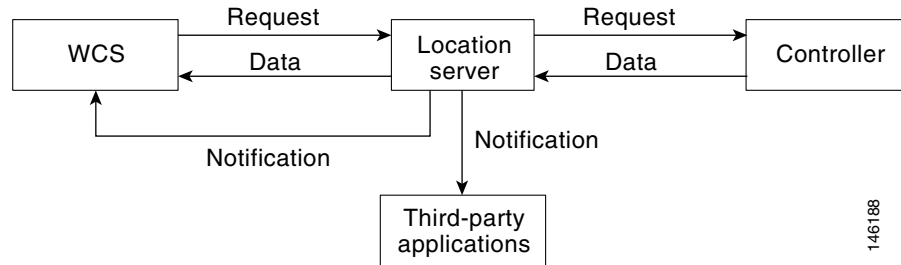
WCS can act as a listener receiving event notifications over SNMP.

Without event notification, Cisco WCS and third-party applications will need to periodically request location information from location servers. (Figure 1-1).

Figure 1-1 Pull Communication Model



The pull communication model, however, is not suitable for applications that require more real-time updates to location information. For these applications, you can configure location servers to send event notifications (push) when certain conditions are met by the registered listeners (Figure 1-2).

Figure 1-2 Push Communication Model

Configuration and Administration

You can use Cisco WCS to perform different configuration and administrative tasks, including adding and removing location servers, configuring location server properties and managing users and groups. Refer to Chapters 2, 4 and 5, respectively for specifics.

Location Server Synchronization

To maintain accurate location information, you can use Cisco WCS to configure location servers so that they are synchronized with network design, event group, and controller elements. Cisco WCS provides you with two ways to synchronize these elements and locations servers: manual and automatic (auto-sync). Additionally, you need to set the time zone for the associated controller to ensure continued synchronization. Refer to [Chapter 3, “Synchronizing Location Servers with Cisco Wireless LAN Controllers and Cisco WCS”](#) for specifics.

Location Planning and Verification

To plan and optimize access point deployment, you can use Cisco WCS to use either apply location readiness or calibration to examine location quality. Additionally, you can analyze the location accuracy of non-roguer and roguer clients and asset tags using testpoints on an area or floor map; and, use chokepoints to enhance location accuracy for tags. Refer to [Chapter 7, “Location Planning and Verification”](#) for specifics.

Monitoring Capability

You can use Cisco WCS to monitor alarms, events and logs generated by location servers. You can also monitor the status of location servers, clients and tagged asset status. Additionally, you can generate a location server utilization report to determine CPU and memory utilization as well as counts for clients, tags and roguer elements (access points and clients). Refer to [Chapter 8, “Monitoring Location Servers and Site”](#) for specifics.

Maintenance Operations

You can use Cisco WCS to import and export asset location information, recover a password, back up the location server to a predefined FTP folder on any Cisco WCS server at defined intervals, and restore the location server data from that Cisco WCS Server. Other location server maintenance operations that you can perform include downloading new application code to all associated location server from any Cisco WCS server, defragmenting the Cisco WCS database, restarting location servers, shutting down location servers and clearing location server configurations. Refer to [Chapter 9, “Performing Maintenance Operations”](#) for specifics.

Compatibility Matrix

[Table 1-1](#) describes compatibility between WCS and location server versions

Table 1-1 WCS and Location Server Compatibility Matrix

WCS \ Location Server	LOC 1.1	LOC 1.2	LOC 2.0	LOC 2.1	LOC 3.0	LOC 3.1
WCS 3.0	Supported	Supported ¹	Not supported	Not supported	Not supported	Not supported
WCS 3.1	Supported ²	Supported	Supported from WCS 3.1.35.0 onward ³	Supported from WCS 3.1.35.0 onward ³	Supported from WCS 3.1.35.0 onward ^{3,6,8}	Not supported
WCS 3.2	Supported ^{2,3,4,5}	Supported ^{3,4,5}	Supported	Supported ⁶	Supported ^{6,8}	Not supported
WCS 4.0	Supported ^{2,3,4,5,6}	Supported ^{3,4,5,7}	Supported ⁷	Supported	Supported ⁸	Supported
WCS 4.1	Supported ^{2,3,4,5,6,9}	Supported ^{3,4,5,7,9}	Supported ^{7,9}	Supported ⁹	Supported	Supported
WCS 4.2	Not supported	Not supported	Not supported	Supported	Supported	Supported

1. Certain antenna attributes are ignored by WCS.
2. Certain antenna attributes are ignored by the location server.
3. Asynchronous notification features are ignored by the location server.
4. Backup and restore operations for the location server may time out.
5. Searching for elements by a specific MAC address or asset name will not work until the location server SW is upgraded.
6. Battery level and location notification update features are ignored by the location server. Location smoothing parameters and contributing access point debug options are ignored by the location server.
7. Battery level and location notification update features are ignored by Cisco WCS. Location smoothing parameters and contributing access point debug options are ignored by Cisco WCS.
8. CCX tags, telemetry, chokepoint, and emergency capabilities are ignored by Cisco WCS.
9. CCX tags, telemetry, chokepoint, and emergency capabilities are ignored by the location server.

**Note**

-
- Controllers operating with Release 4.2 are compatible with location servers operating with release 3.1.
 - Controllers operating with Release 4.2 are not compatible with location servers operating with Release 3.0 or lower releases.
 - Controllers operating with Release 4.1 are compatible with location servers operating with Releases 3.1 and 3.0.
-

