

ASA 8.0: How To Change the WebVPN Logo

Document ID: 98577

Introduction

Prerequisites

- Requirements

- Components Used

- Conventions

Change the WebVPN Logo

- Upload and Configure the Logo

- Apply the Customization

- Customize the AnyConnect VPN Client Logo

Verify

Troubleshoot

[NetPro Discussion Forums – Featured Conversations](#)

Related Information

Introduction

This document illustrates how to change the logo that appears on the WebVPN login and portal pages. By using customizations that can be edited with the web-based Customization Editor, the Adaptive Security Appliance (ASA) provides a means to change nearly everything about the look and feel of the WebVPN portal.

In this document, the Adaptive Security Device Manager (ASDM) and the Customization Editor are used to upload a new logo to the ASA. Then the new logo is configured to appear before and after users log in. This configuration is performed using ASDM 6.0(2) on an ASA that runs software version 8.0(2).

This document is part of a set of documents about configuring WebVPN on the ASA.

Prerequisites

Requirements

There are no specific requirements for this document.

Components Used

The information in this document is based on ASDM 6.0(2) on an ASA that runs software version 8.0(2).

Conventions

Refer to Cisco Technical Tips Conventions for more information on document conventions.

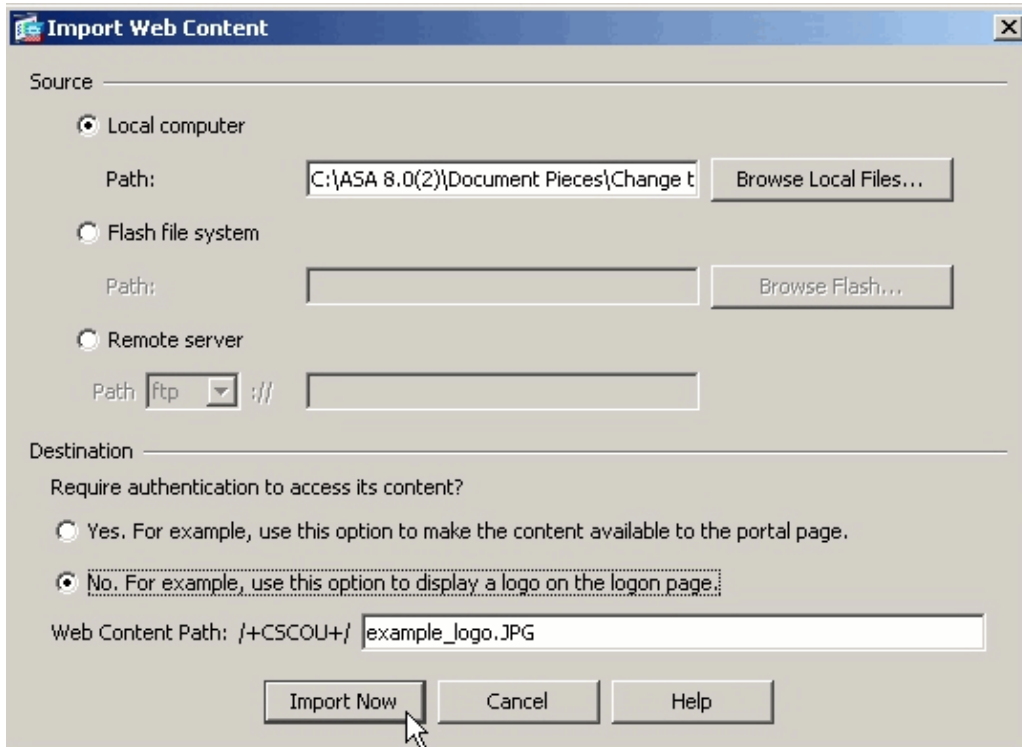
Change the WebVPN Logo

In this section, you are presented with the information to upload a new logo and configure the ASA in order to display it on the WebVPN login and portal pages.

Upload and Configure the Logo

Complete these steps in order to upload and configure the new logo:

1. Navigate to **Configuration > Remote Access VPN > Clientless SSL VPN Access > Portal > Web Contents**.
2. Point the ASA to your logo and click **Import Now** in order to upload it. Make sure you choose **No** under Destination if you want this logo to appear before a user logs in.

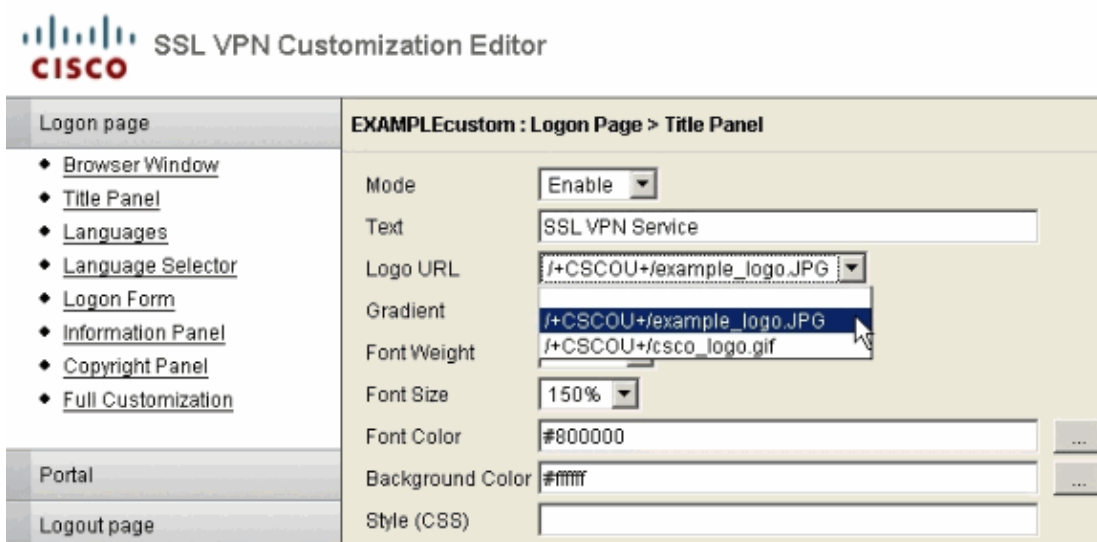


The screenshot shows the 'Import Web Content' dialog box. It has three radio buttons for source: 'Local computer' (selected), 'Flash file system', and 'Remote server'. The 'Local computer' section has a 'Path' field containing 'C:\ASA 8.0(2)\Document Pieces\Change t' and a 'Browse Local Files...' button. The 'Flash file system' section has an empty 'Path' field and a 'Browse Flash...' button. The 'Remote server' section has a 'Path' dropdown set to 'ftp' and an empty field. Below these is the 'Destination' section with the question 'Require authentication to access its content?'. There are two radio buttons: 'Yes. For example, use this option to make the content available to the portal page.' (unselected) and 'No. For example, use this option to display a logo on the logon page.' (selected). A 'Web Content Path' field contains '/+CSCOU+/ example_logo.JPG'. At the bottom are 'Import Now', 'Cancel', and 'Help' buttons.

3. Once you have uploaded the logo, navigate to **Configuration > Remote Access VPN > Clientless SSL VPN Access > Portal > Customization**.
4. Choose a customization to edit, or create a new one.

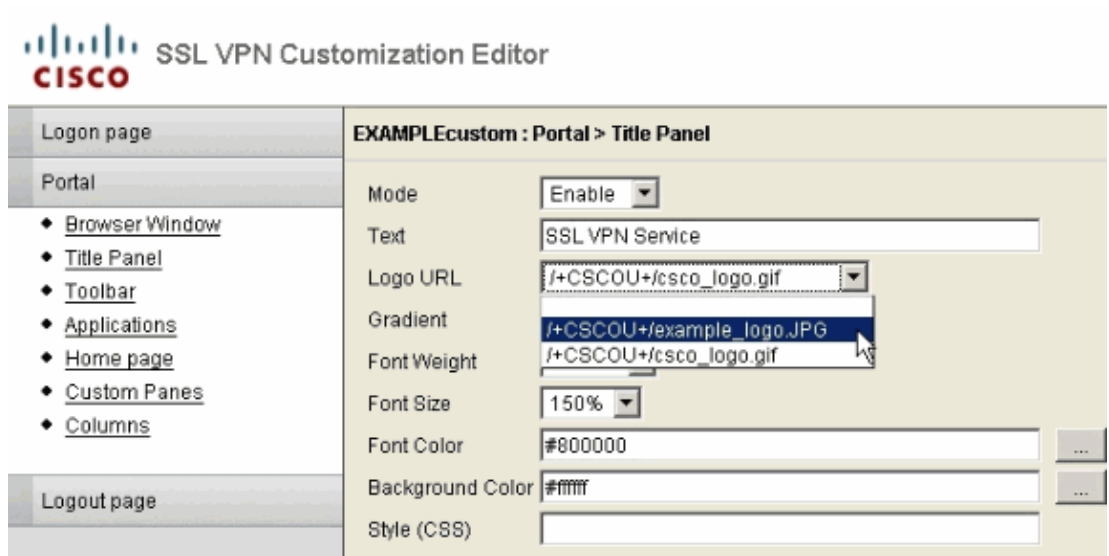
Note: Cisco does not recommend that you make substantial changes to the Default Customization.

5. On the Editor web page that appears, navigate to **Title Panel** under Logon Page.
6. Select your logo in the **Logo URL** drop-down.



The screenshot shows the 'SSL VPN Customization Editor' interface. The title bar says 'SSL VPN Customization Editor' with the Cisco logo. On the left is a navigation pane with 'Logon page' selected, containing links for 'Browser Window', 'Title Panel', 'Languages', 'Language Selector', 'Logon Form', 'Information Panel', 'Copyright Panel', and 'Full Customization'. Below this are 'Portal' and 'Logout page' sections. The main area is titled 'EXAMPLEcustom : Logon Page > Title Panel'. It contains several configuration fields: 'Mode' (Enable), 'Text' (SSL VPN Service), 'Logo URL' (dropdown with '/+CSCOU+/example_logo.JPG' selected), 'Gradient' (dropdown with '/+CSCOU+/example_logo.JPG' selected), 'Font Weight' (dropdown with '/+CSCOU+/cisco_logo.gif' selected), 'Font Size' (150%), 'Font Color' (#800000), 'Background Color' (#ffff), and 'Style (CSS)'. There are '...' buttons next to the Font Color and Background Color fields.

- Navigate to **Title Panel** under **Portal**.
- Select your logo in the **Logo URL** drop-down.



- Click **Save** in the upper right and close the Editor web page.

Apply the Customization

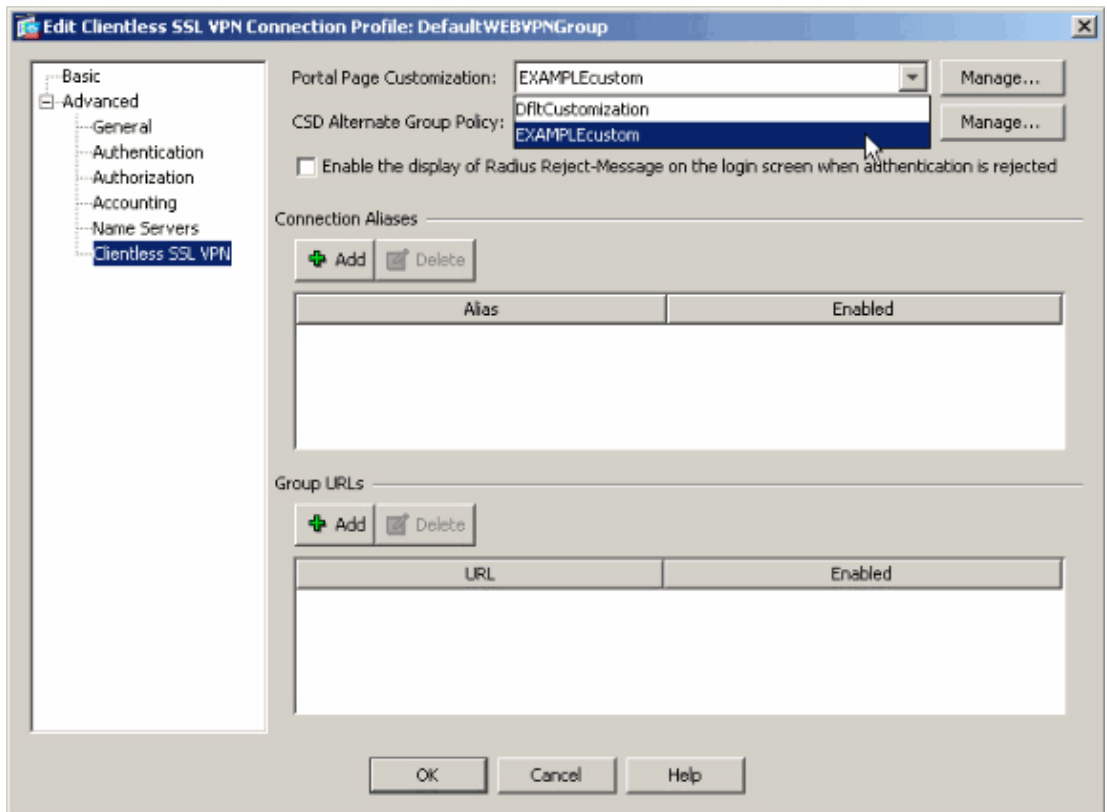
It is important to make sure that the customization that you have configured is applied to the correct connection profile (tunnel group) in order for the logo to appear on the login and portal pages. Unless users connect to the ASA with a group-url, **it is necessary to apply the customization to the DefaultWEBVPNGroup for the logo to appear before login.**

This table shows where the customization should be applied for a given configuration:

	User Login Method		
	Login without Group Selection (use default)	Login with Group Selection	Group-URL
Customization visible on Login Page	DefaultWEBVPNGroup	DefaultWEBVPNGroup	User's Connection Profile (tunnel group)
Customization visible on Portal Page	DefaultWEBVPNGroup	User's Connection Profile (tunnel group)	User's Connection Profile (tunnel group)

Complete these steps in order to configure the customization in the connection profile (tunnel group):

- Navigate to **Configuration > Remote Access VPN > Clientless SSL VPN Access > Connection Profiles**.
- Select the **DefaultWEBVPNGroup** (or your desired group) and click **Edit**.
- Select **Advanced > Clientless SSL VPN** in the left pane.
- Verify that your customization is selected from the Portal Page Customization drop-down.



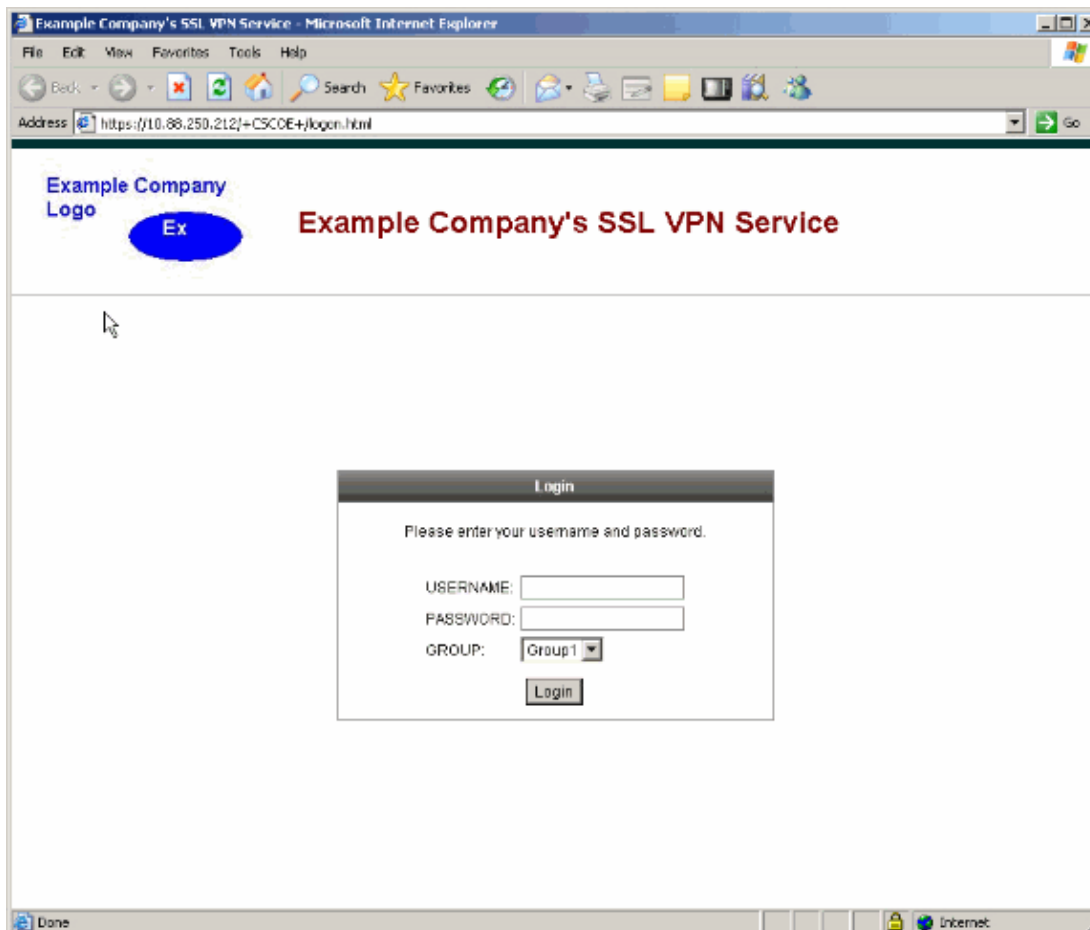
Customize the AnyConnect VPN Client Logo

You can customize certain elements, such as the corporate logo, of the AnyConnect client graphical user interface that the remote user sees when logging in. You customize the AnyConnect client user interface by replacing files that affect the interface with your own custom files. For example, with a Windows installation, you can change the company logo from the default Cisco logo by replacing the *company_logo.bmp* file with your own file.

Refer to Customizing the End-user Experience of the Cisco AnyConnect VPN Client Administrator Guide, Version 2.0 for more information on the configuration.

Verify

Navigate to the WebVPN login page of the ASA to verify that the logo has been changed and that the customization is properly applied.



Troubleshoot

If the logo does not appear, make sure that the customization is applied to the correct connection profile (tunnel group). See the Apply the Customization section for more information.

NetPro Discussion Forums – Featured Conversations

Networking Professionals Connection is a forum for networking professionals to share questions, suggestions, and information about networking solutions, products, and technologies. The featured links are some of the most recent conversations available in this technology.

NetPro Discussion Forums – Featured Conversations for VPN
Service Providers: VPN Service Architectures
Service Providers: Network Management
Virtual Private Networks: General

Related Information

- [Technical Support & Documentation – Cisco Systems](#)

