

# T1 PRI Troubleshooting Flowchart

Document ID: 9344

---

**Introduction**

**Prerequisites**

Requirements

Components Used

Conventions

**Flowchart**

**Related Information**

---

## Introduction

This document shows the flowchart for T1 PRI troubleshooting.

## Prerequisites

### Requirements

There are no specific requirements for this document.

### Components Used

This document is not restricted to specific software and hardware versions.

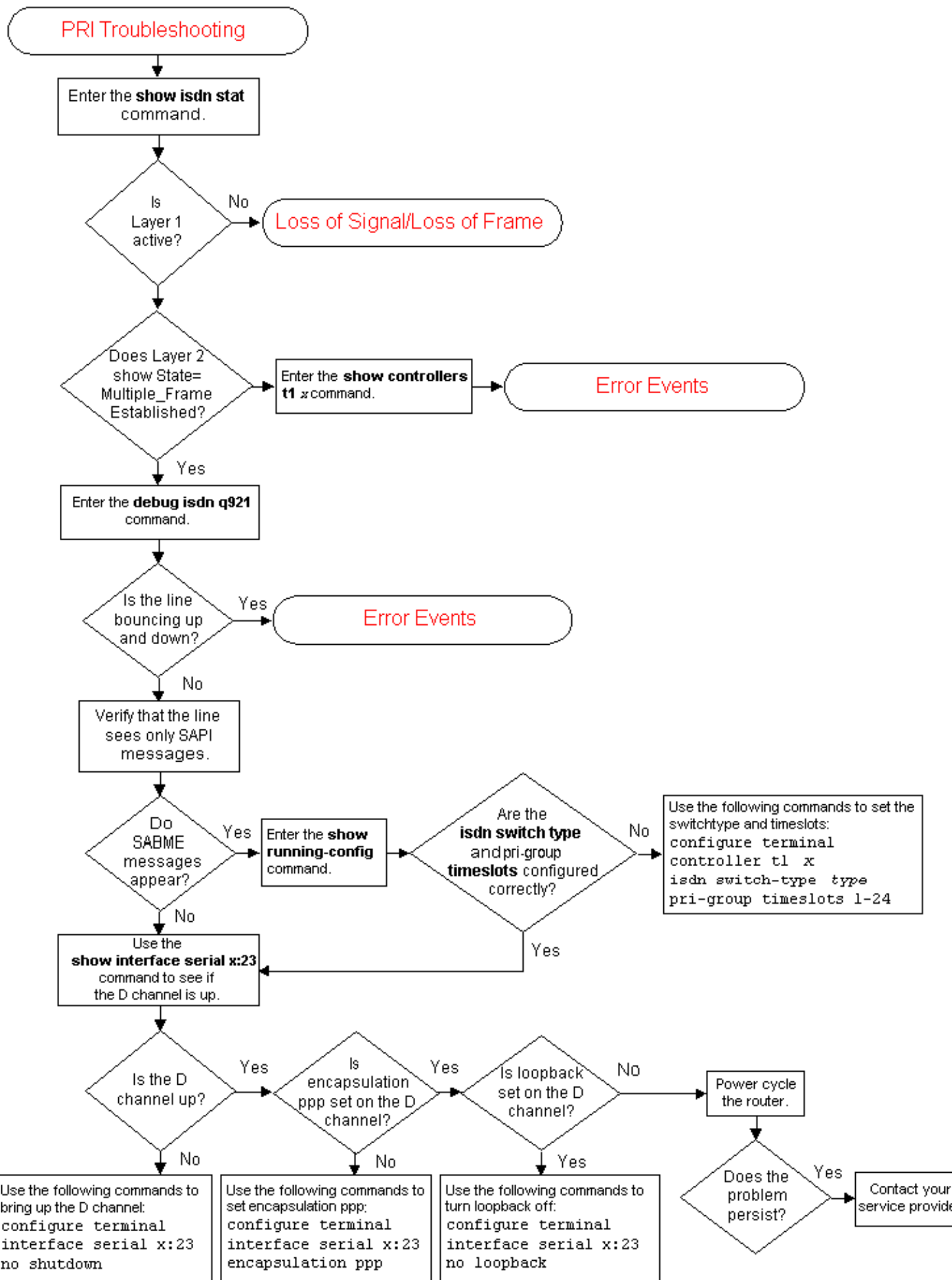
The information in this document was created from the devices in a specific lab environment. All of the devices used in this document started with a cleared (default) configuration. If your network is live, make sure that you understand the potential impact of any command.

### Conventions

For more information on document conventions, refer to the Cisco Technical Tips Conventions.

## Flowchart

To see more information, click the command boxes. Click the information in red to go to the next flow chart.



## Related Information

- **T1 Troubleshooting**
  - **T1 Layer 1 Troubleshooting**
  - **T1 Alarm Troubleshooting**
  - **T1 Error Event Troubleshooting**
  - **Hard Plug Loopback Test**
  - **Technical Support – Cisco Systems**
- 

[Contacts & Feedback](#) | [Help](#) | [Site Map](#)

© 2008 – 2009 Cisco Systems, Inc. All rights reserved. [Terms & Conditions](#) | [Privacy Statement](#) | [Cookie Policy](#) | [Trademarks of Cisco Systems, Inc.](#)

---

Updated: Feb 17, 2005

Document ID: 9344

---