

Hard Plug Loopback Test

Document ID: 9343

Introduction

Prerequisites

Requirements

Components Used

Conventions

Flowchart

Related Information

Introduction

This document provides a flowchart for the hard plug loopback test.

Prerequisites

Requirements

There are no specific requirements for this document.

Components Used

This document is not restricted to specific software and hardware versions.

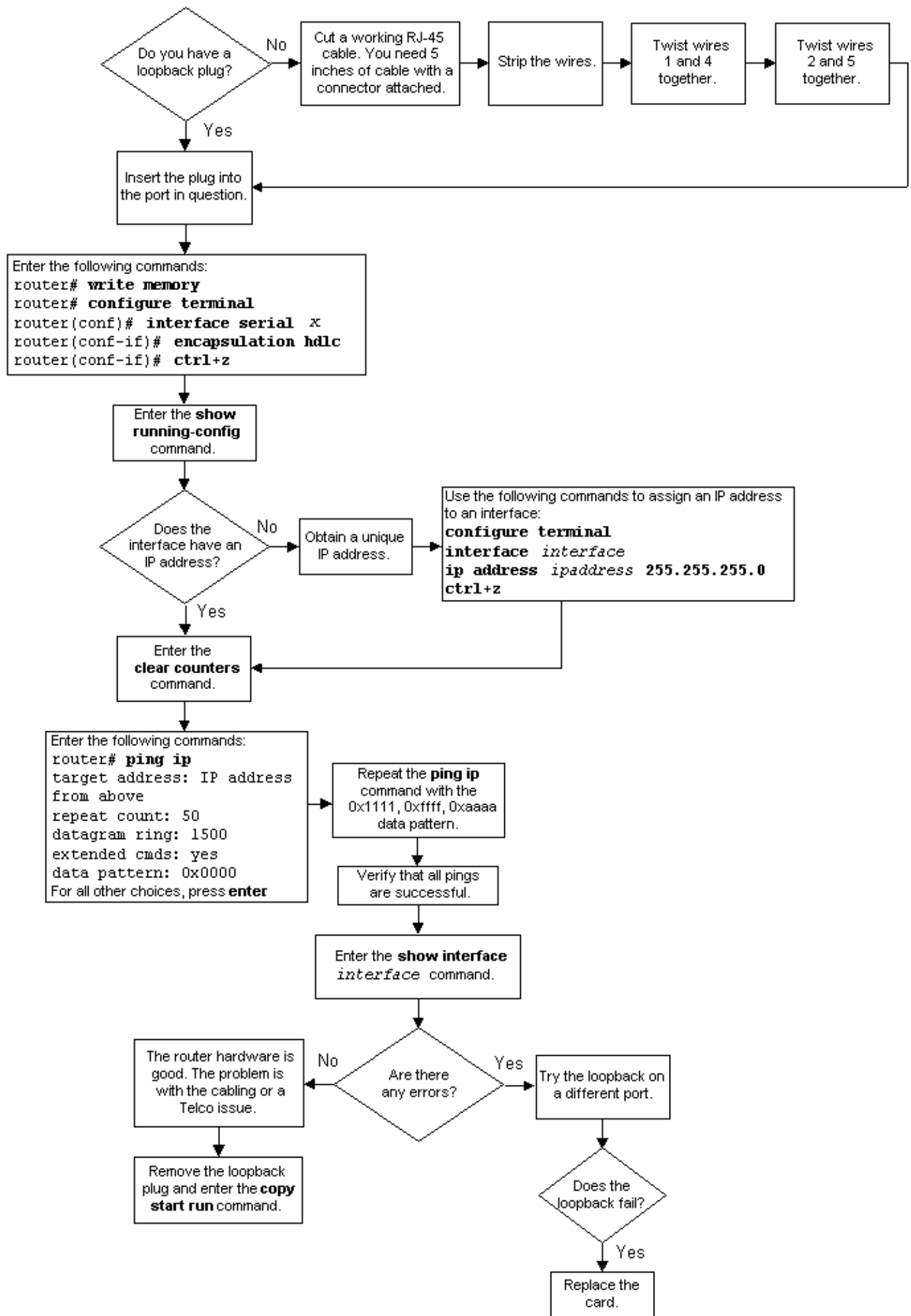
The information in this document was created from the devices in a specific lab environment. All of the devices used in this document started with a cleared (default) configuration. If your network is live, make sure that you understand the potential impact of any command.

Conventions

For more information on document conventions, refer to the Cisco Technical Tips Conventions.

Flowchart

Click the command boxes in the diagram for more information.



Related Information

- **T1 Troubleshooting**
 - **T1 Layer 1 Troubleshooting**
 - **T1 Alarm Troubleshooting**
 - **T1 Error Event Troubleshooting**
 - **T1 PRI Troubleshooting**
 - **Technical Support & Documentation – Cisco Systems**
-

[Contacts & Feedback](#) | [Help](#) | [Site Map](#)

© 2008 – 2009 Cisco Systems, Inc. All rights reserved. [Terms & Conditions](#) | [Privacy Statement](#) | [Cookie Policy](#) | [Trademarks of Cisco Systems, Inc.](#)

Updated: Jun 23, 2005

Document ID: 9343
