

AP Group VLANs with Wireless LAN Controllers Configuration Example

Document ID: 71477

Introduction

Prerequisites

- Requirements
- Components Used
- Conventions

Background Information

- Network Setup

Configure

- Network Diagram
- Configure the Student-VLAN and Staff-VLAN Dynamic Interfaces
- Create the AP Groups for Students and Staff
- Assign LAs to the Appropriate AP Group

Verify

Troubleshoot

NetPro Discussion Forums – Featured Conversations

Related Information

Introduction

This document demonstrates how to configure access point (AP) Group VLANs with Wireless LAN Controllers (WLCs) and Lightweight Access Points (LAPs).

Prerequisites

Requirements

Ensure that you meet these requirements before you attempt this configuration:

- Basic knowledge of the configuration of LAPs and Cisco WLCs
- Basic knowledge of Lightweight Access Point Protocol (LWAPP)

Refer to Understanding the Lightweight Access Point Protocol (LWAPP) for more information.

Components Used

The information in this document is based on these software and hardware versions:

- Cisco 4400 WLC that runs firmware release 4.0
- Cisco 1000 Series LAPs
- Cisco 802.11a/b/g Wireless Client Adapter that runs firmware release 2.6
- Cisco 2811 Router that runs Cisco IOS® Software Release 12.4(2)XA
- Two Cisco 3500 XL Series Switches that run Cisco IOS Software Release 12.0(5)WC3b

The information in this document was created from the devices in a specific lab environment. All of the devices used in this document started with a cleared (default) configuration. If your network is live, make sure

that you understand the potential impact of any command.

Conventions

Refer to Cisco Technical Tips Conventions for more information on document conventions.

Background Information

In typical deployment scenarios, each WLAN is mapped to a single dynamic interface per WLC, but consider a deployment scenario where there is a 4404–100 WLC that supports the maximum number of APs (100). Now consider a scenario where 25 users are associated to each AP. That would result in 2500 users who share a single VLAN. Some customer designs can require substantially smaller subnet sizes. One way to deal with this is to break up the WLAN into multiple segments. The AP grouping feature of the WLC allows a single WLAN to be supported across multiple dynamic interfaces (VLANs) on the controller. This is done when a group of APs is mapped to a specific dynamic interface. APs can be grouped logically by employee workgroup or physically by location.

AP Group VLANs are used in a setup where a Universal WLAN (service set identifier [SSID]) is required but clients need to be differentiated (placed on different interfaces configured on the WLC) by virtue of physical LAPs they associate with.

AP Group VLANs, also called Site–Specific VLANs, is a way to allow load balancing on a WLAN by creating groups of Cisco LAPs that override the interface normally provided by the WLAN. When a client joins a WLAN, the interface used is determined by the LAP it is associated with, and by looking up the AP Group VLAN and WLAN for that LAP.

The traditional method of assigning an interface to a device is based on the SSID or AAA policy override. In this case, if a client wants to broadcast information to another client on a WLAN, the broadcast is received by all the clients on that WLAN irrespective of whether it was intended for them or not.

The AP Group VLANs feature is an additional method used to limit the broadcast domains to a minimum. This is done by logically segmenting a WLAN into different broadcast domains. It limits the broadcast of a WLAN to a smaller group of LAPs. This helps to manage load balancing and bandwidth allocation more effectively. The AP Group VLANs feature creates a new table in the controller which lists the interfaces for every WLAN ID. Each entry in the table is indexed using a location name (which defines the group of LAPs).

Note: AP groups do not allow multicast roaming across group boundaries. AP groups allow APs on the same controller to map the same WLAN (SSID) to different VLANs. If a client roams between APs in different groups, the multicast session does not function properly because this is currently not supported. Currently, the WLC forwards multicast only for the VLAN configured on the WLAN and does not take into consideration VLANs configured in AP groups.

This document gives a configuration example that illustrates the use of this feature and also explains how to configure Site–Specific VLANs.

Network Setup

In this network setup, there are two separate buildings. Building 1 houses students and Building 2 houses staff. Each building has its own set of LAPs that talk to the same WLC but advertise just one WLAN (SSID) called **School**. There are five LAPs in Building 1 and five LAPs in Building 2.

The LAPs in Building 1 should be grouped to AP group **Students** tied to the dynamic interface called **Student–VLAN**. The LAPs in Building 2 should be grouped to AP group **Staff** tied to the dynamic interface

called **Staff-VLAN**. With this configured on the WLC, all clients that are associated to LAPs in Building 1 are put on the Student-VLAN interface and are assigned an IP address from the DHCP scope configured for the Students AP group. Clients that are associated to LAPs in Building 2 are put on the Staff-VLAN interface and are assigned an IP address from the DHCP scope configured for the Staff AP group, even though all clients associate to the same WLAN (SSID) called School.

This example shows how to configure the WLC and LAPs for this setup. These parameters are used for the network setup in this document:

AP Group 1:

AP Group Name : Students
Dynamic Interface : Student-VLAN
DHCP server: 172.16.1.30 (Internal DHCP Server on the WLC)
DHCP Scope: 10.0.0.2-10.0.0.15
Authentication : none
SSID: School

AP Group 2:

AP Group Name : Staff
Dynamic Interface : Staff-VLAN
DHCP server: 172.16.1.30 (Internal DHCP Server on the WLC)
DHCP Scope: 192.168.1.2-192.168.1.15
Authentication : none
SSID: School

Configure

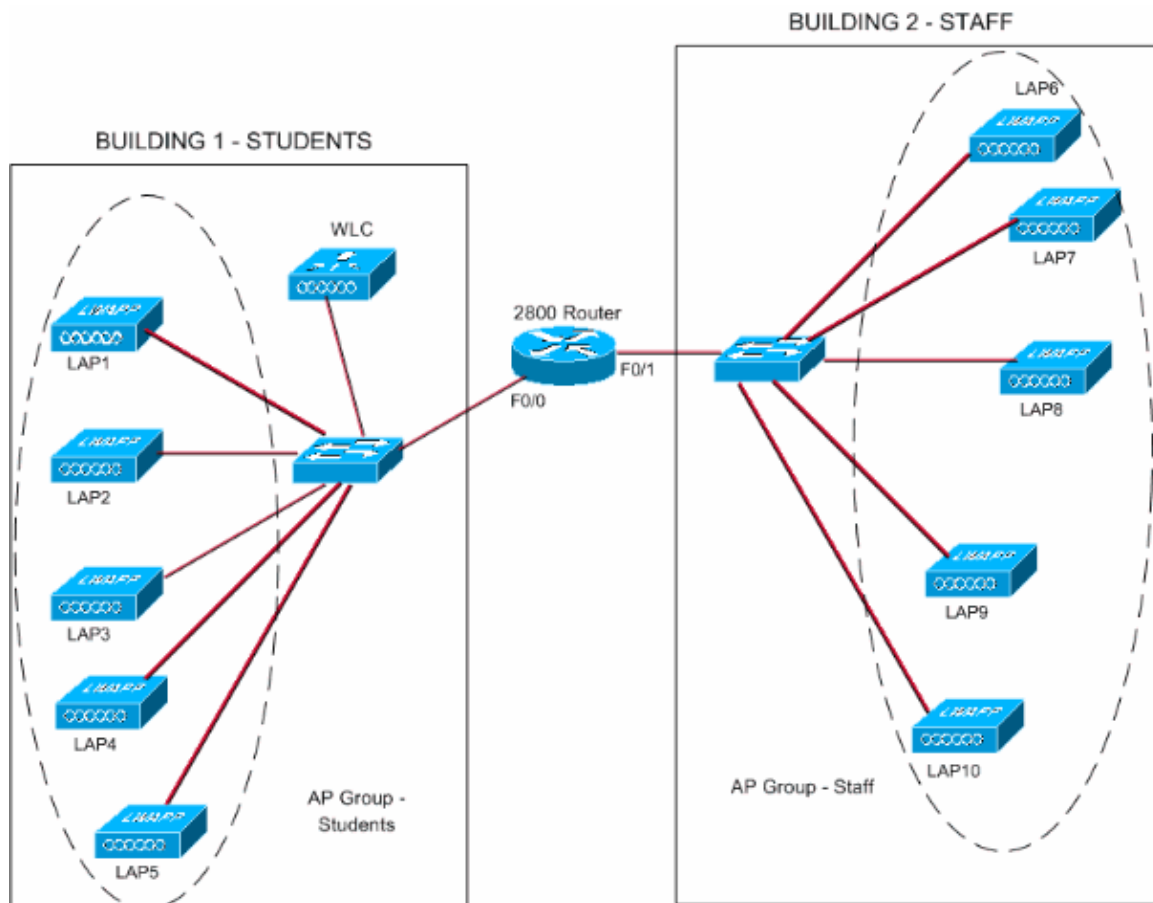
Before you configure the AP Group VLANs feature, you must configure the WLC for basic operation and register the LAPs to the WLC. This document assumes that the WLC is configured for basic operation and that the LAPs are registered to the WLC. If you are a new user trying to setup the WLC for basic operation with LAPs, refer to [Lightweight AP \(LAP\) Registration to a Wireless LAN Controller \(WLC\)](#).

Once the LAPs are registered to the WLC, you can configure the AP Group VLANs feature.

Complete these tasks in order to configure the LAPs and WLC for this setup:

1. Configure the Student-VLAN and Staff-VLAN dynamic interfaces.
2. Create the AP groups for Students and Staff.
3. Assign LAPs to the appropriate AP group.
4. Verify the configuration.

Network Diagram



Configure the Student-VLAN and Staff-VLAN Dynamic Interfaces

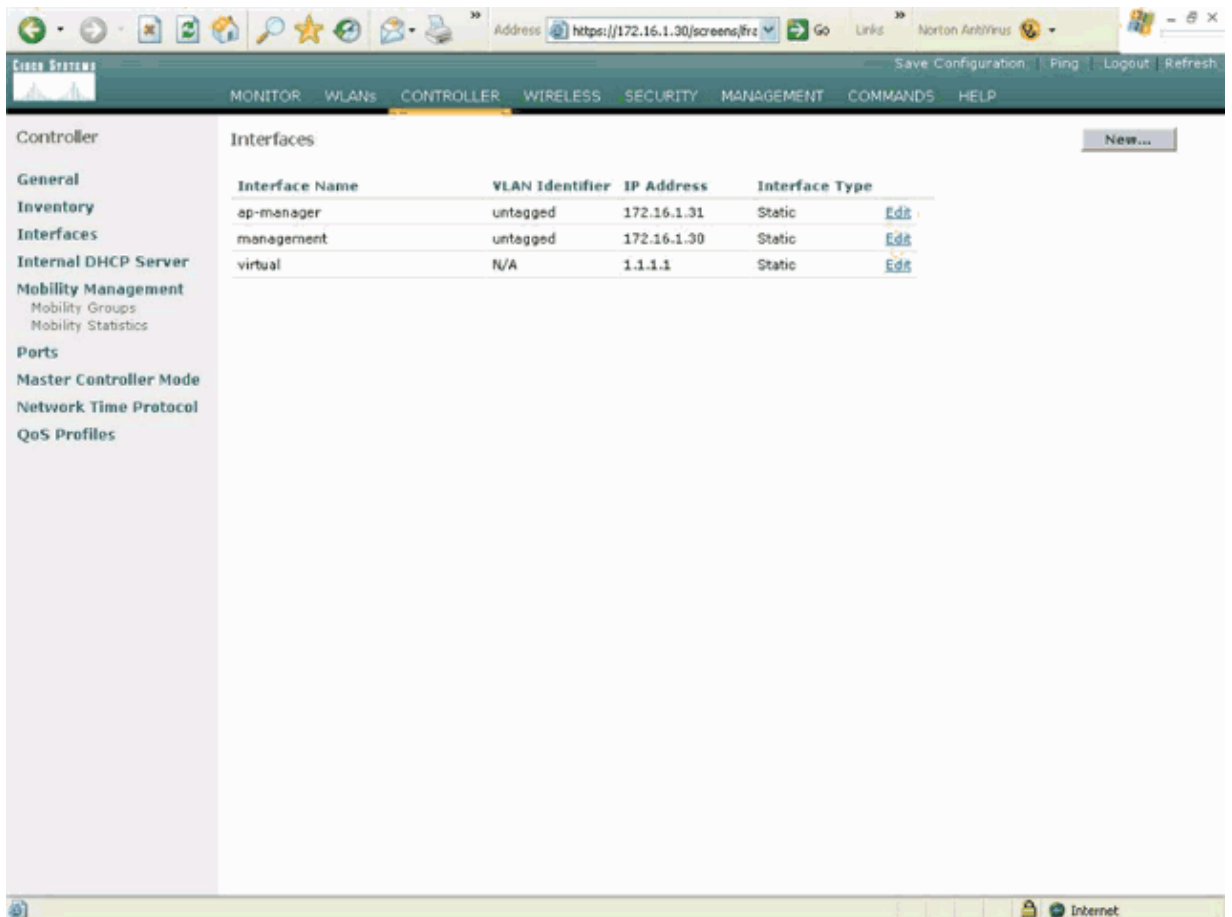
Complete these steps in order to create the dynamic interfaces on the WLC:

1. Go to the WLC GUI and choose **Controller > Interfaces**.

The Interfaces window appears. This window lists the interfaces that are configured on the controller. This includes these interfaces:

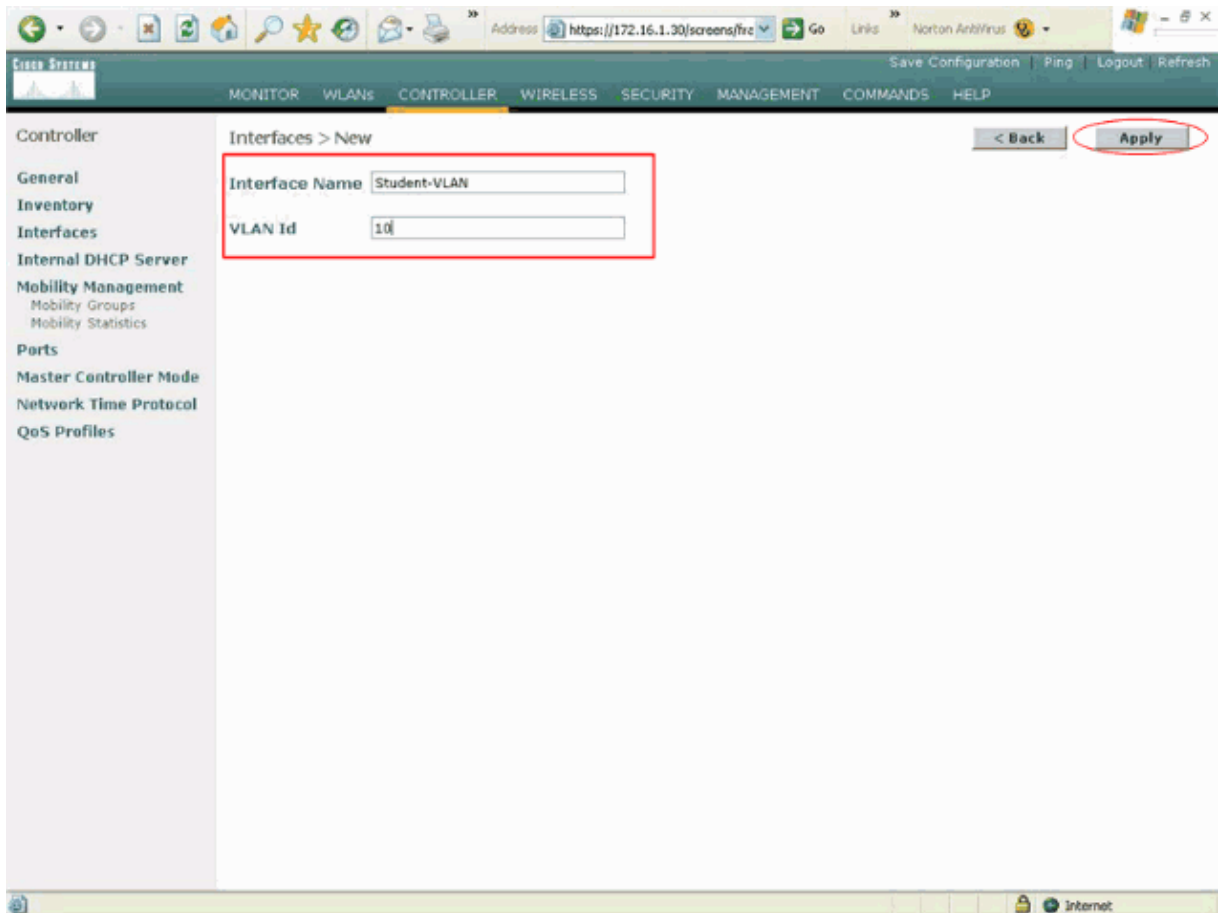
- ◆ management interface
- ◆ ap-manager interface
- ◆ virtual interface
- ◆ service port interface
- ◆ user defined dynamic interfaces

Click **New** in order to create a new dynamic interface.



2. In the Interfaces > New window, enter the Interface Name and the VLAN ID. Then click **Apply**.

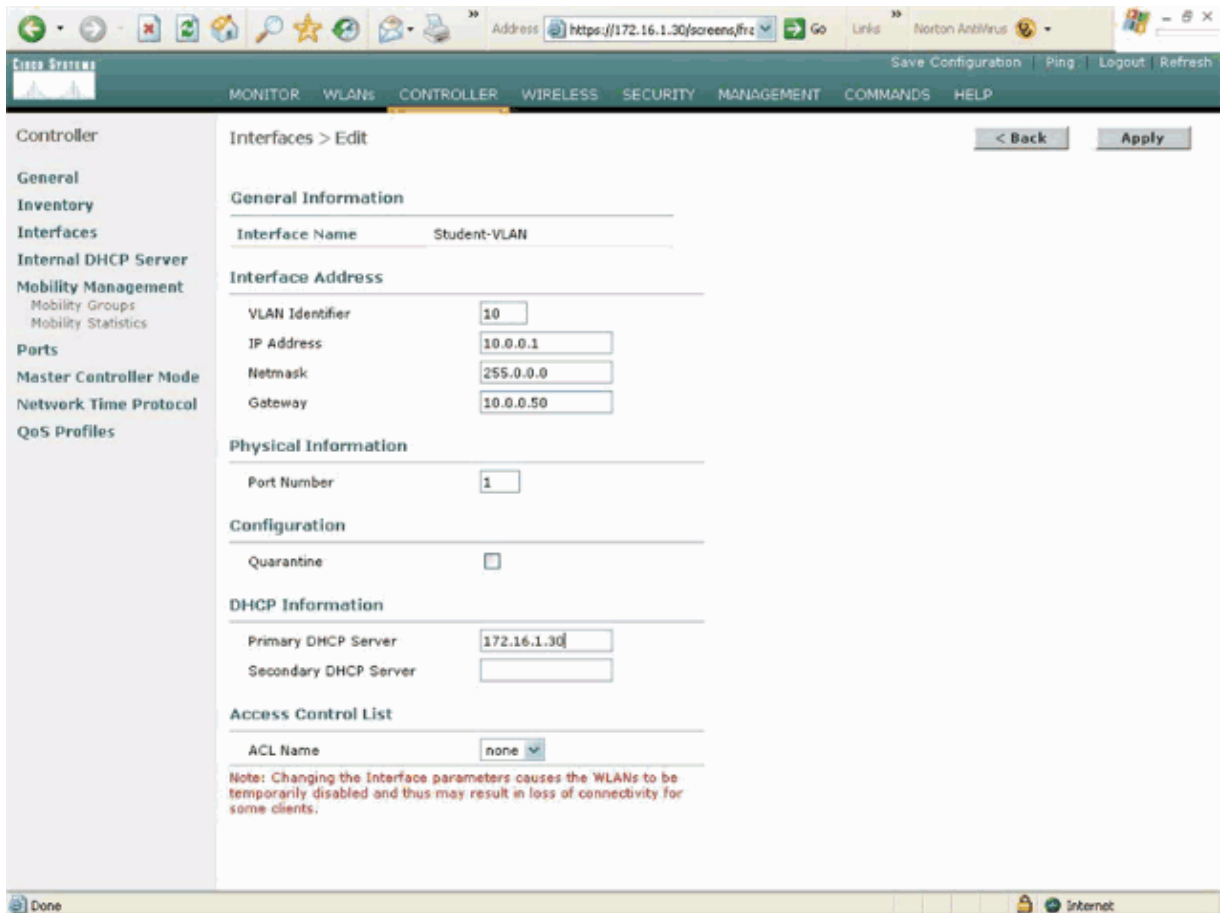
In this example, the dynamic interface is named Student-VLAN and the VLAN ID is assigned 10.



3. In the **Interfaces > Edit** window, enter the IP address, the subnet mask, and the default gateway for the dynamic interface. Assign it to a physical port on the WLC, and enter the IP address of the DHCP server. Then click **Apply**.

For this example, these parameters are used for the Student-VLAN interface:

```
Student-VLAN
IP address: 10.0.0.1
Netmask: 255.0.0.0
Default gateway: 10.0.0.50
Port on WLC: 1
DHCP server: 172.16.1.30 (Internal DHCP server on the WLC)
```



4. Repeat steps 1 through 3 in order to create a dynamic interface for Staff-VLAN.

This example uses these parameters for the Staff-VLAN interface:

```
Staff-VLAN
IP address: 192.168.1.1
Netmask: 255.255.255.0
Default gateway: 192.168.1.50
Port on WLC: 1
DHCP server: 172.16.1.30 (Internal DHCP server on the WLC)
```

Browser address bar: <https://172.16.1.30/screens/frc>

Navigation: Save Configuration | Ping | Logout | Refresh

Menu: MONITOR | WLANs | CONTROLLER | WIRELESS | SECURITY | MANAGEMENT | COMMANDS | HELP

Controller

- General
- Inventory
- Interfaces
- Internal DHCP Server
- Mobility Management
 - Mobility Groups
 - Mobility Statistics
- Ports
- Master Controller Mode
- Network Time Protocol
- QoS Profiles

Interfaces > New

< Back **Apply**

Interface Name: Staff-VLAN

VLAN Id: 20

Browser status bar: <https://172.16.1.30/screens/banner.html#> Internet

Browser address bar: <https://172.16.1.30/screens/frc>

Navigation: Save Configurabon | Ping | Logout | Refresh

Menu: MONITOR | WLANs | CONTROLLER | WIRELESS | SECURITY | MANAGEMENT | COMMANDS | HELP

Controller

- General
- Inventory
- Interfaces
- Internal DHCP Server
- Mobility Management
 - Mobility Groups
 - Mobility Statistics
- Ports
- Master Controller Mode
- Network Time Protocol
- QoS Profiles

Interfaces > Edit

< Back **Apply**

General Information

Interface Name: Staff-VLAN

Interface Address

VLAN Identifier: 20

IP Address: 192.168.1.1

Netmask: 255.255.255.0

Gateway: 192.168.1.50

Physical Information

Port Number: 1

Configuration

Quarantine:

DHCP Information

Primary DHCP Server: 172.16.1.30

Secondary DHCP Server:

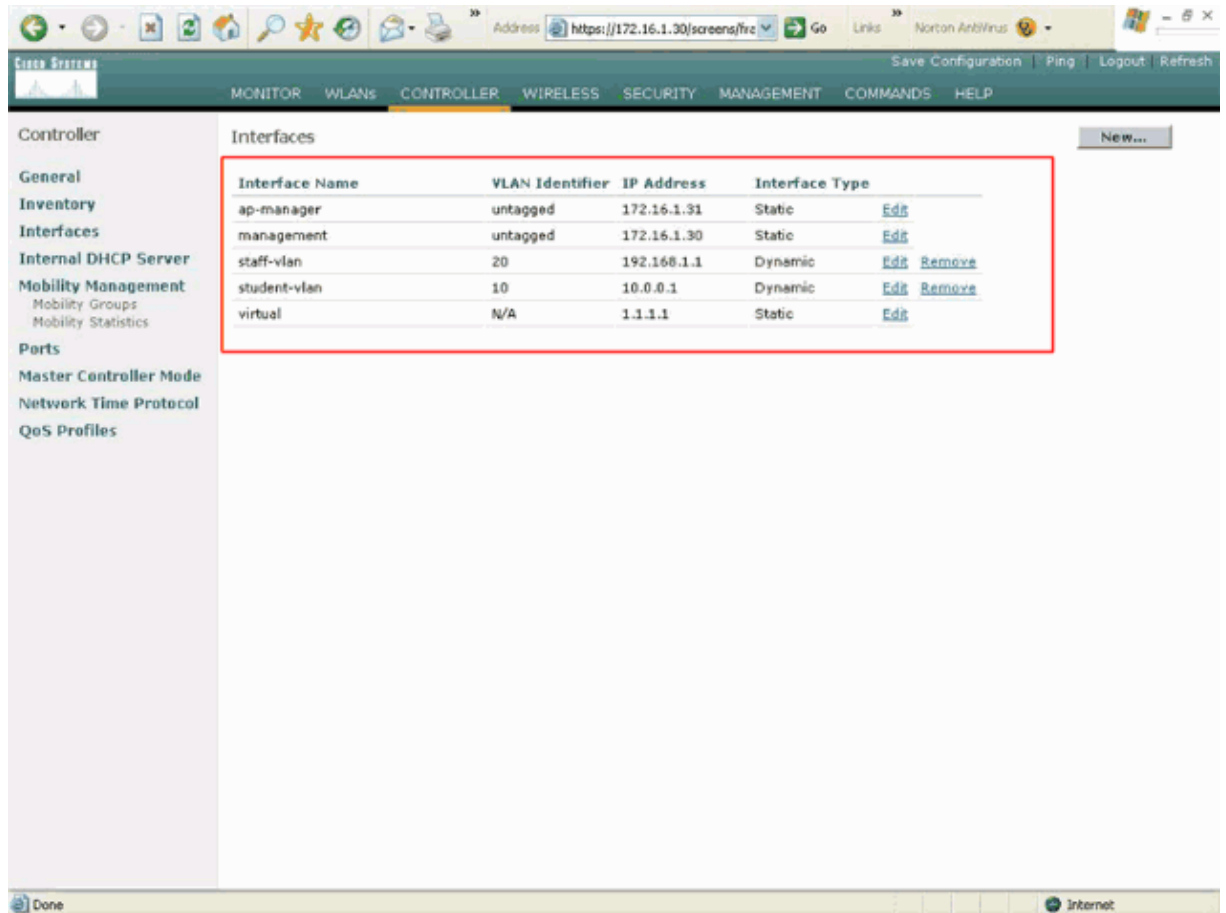
Access Control List

ACL Name: none

Note: Changing the interface parameters causes the WLANs to be temporarily disabled and thus may result in loss of connectivity for some clients.

Browser status bar: Done Internet

Once two dynamic interfaces are created, the Interfaces window summarizes the list of interfaces configured on the controller:



Interface Name	VLAN Identifier	IP Address	Interface Type	
ap-manager	untagged	172.16.1.31	Static	Edit
management	untagged	172.16.1.30	Static	Edit
staff-vlan	20	192.168.1.1	Dynamic	Edit Remove
student-vlan	10	10.0.0.1	Dynamic	Edit Remove
virtual	N/A	1.1.1.1	Static	Edit

The next step is to configure AP groups on the WLC.

Create the AP Groups for Students and Staff

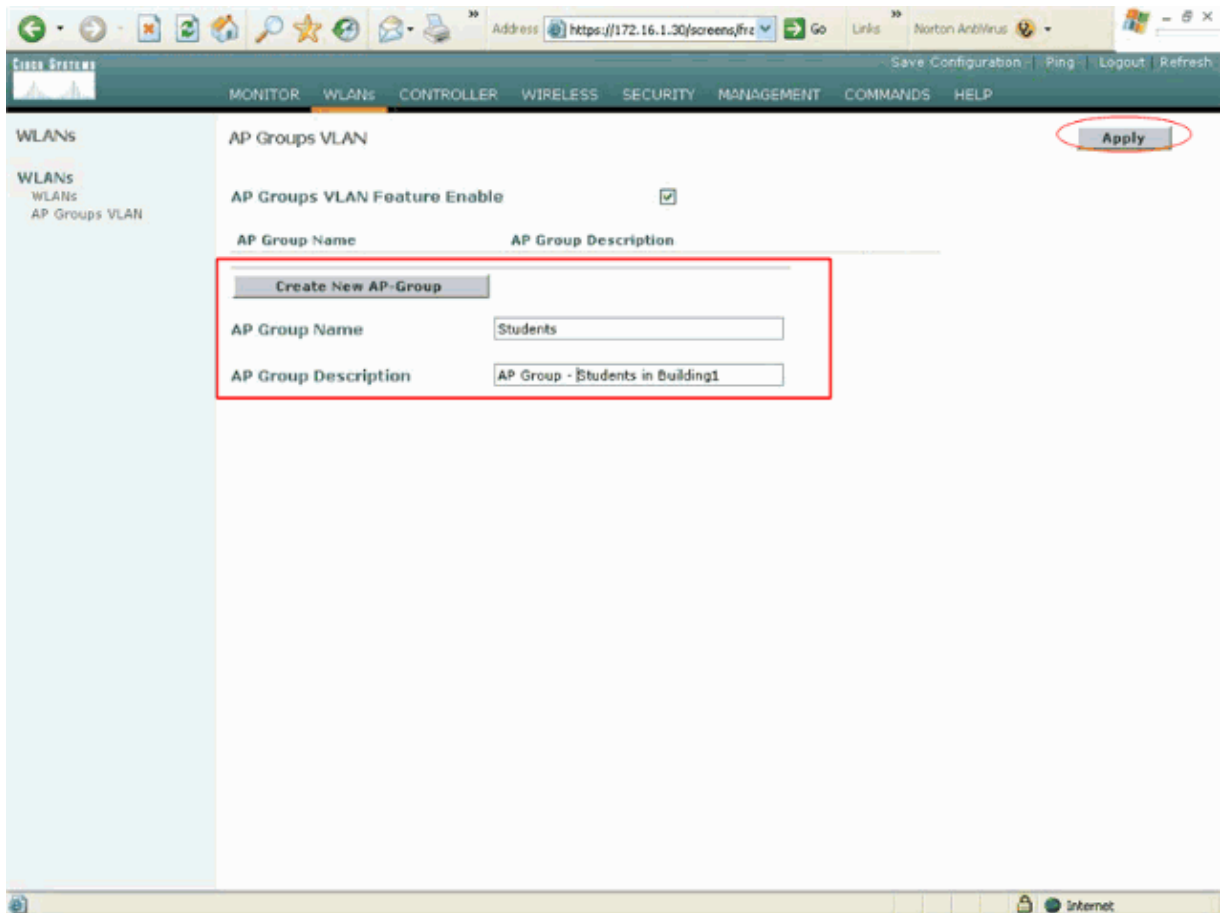
Complete these steps in order to create the AP groups for Students and Staff on the WLC:

1. Go to the controller GUI and choose **WLANs > AP Groups VLANs**.

The AP Group VLANs page appears.

2. Check **AP Group VLANs Feature Enable** and then click **Apply** in order to enable the AP Group VLANs feature.
3. Enter the AP Group Name and Description and then click **Create New AP-Group** in order to create a new AP group.

In this setup, two AP groups are created. One AP group is for the LAPs in Building 1 (for the students to access the WLAN network) and is named **Students**. The second AP group is for LAPs in Building 2 (for the staff to access the WLAN) and is named **Staff**.



Note: Issue this command in order to enable the AP Group VLANs feature from the CLI:

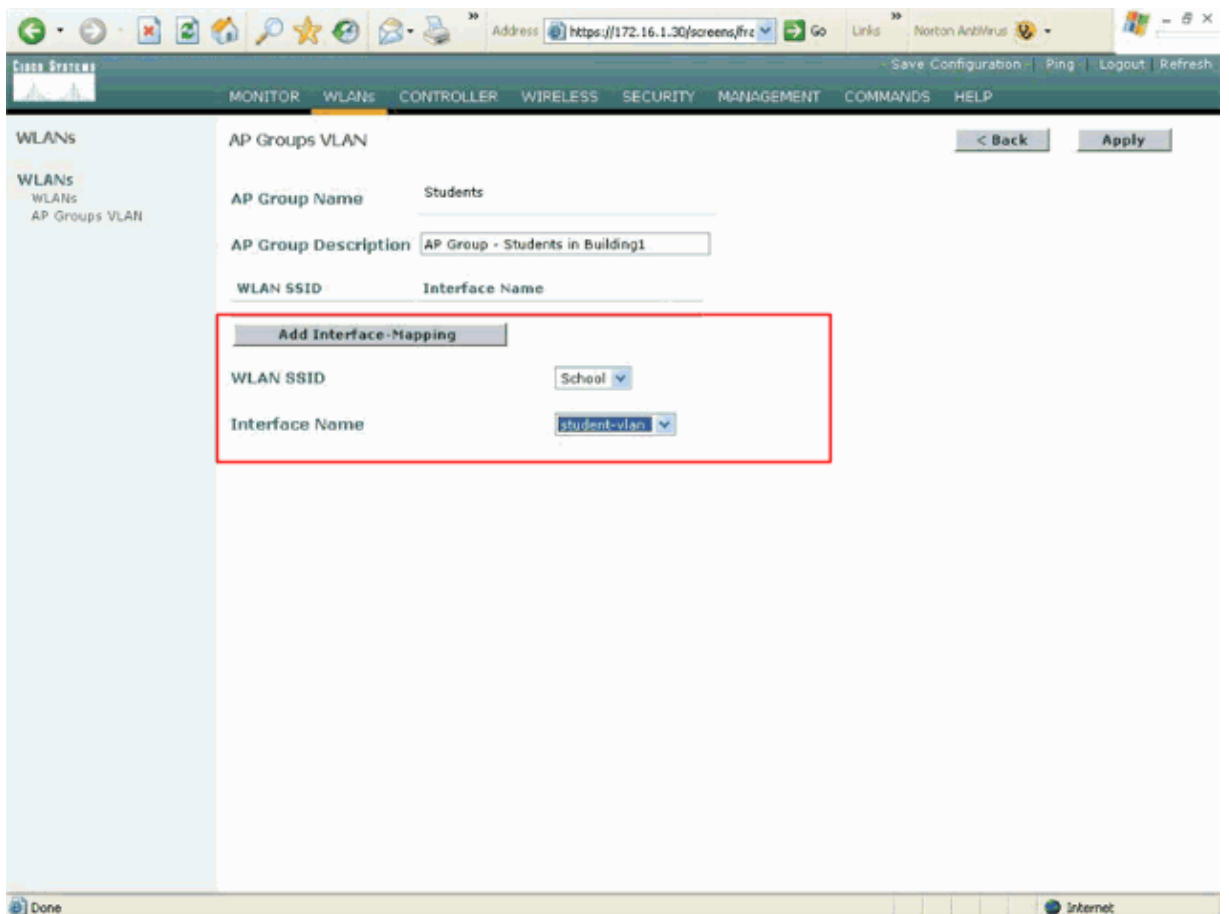
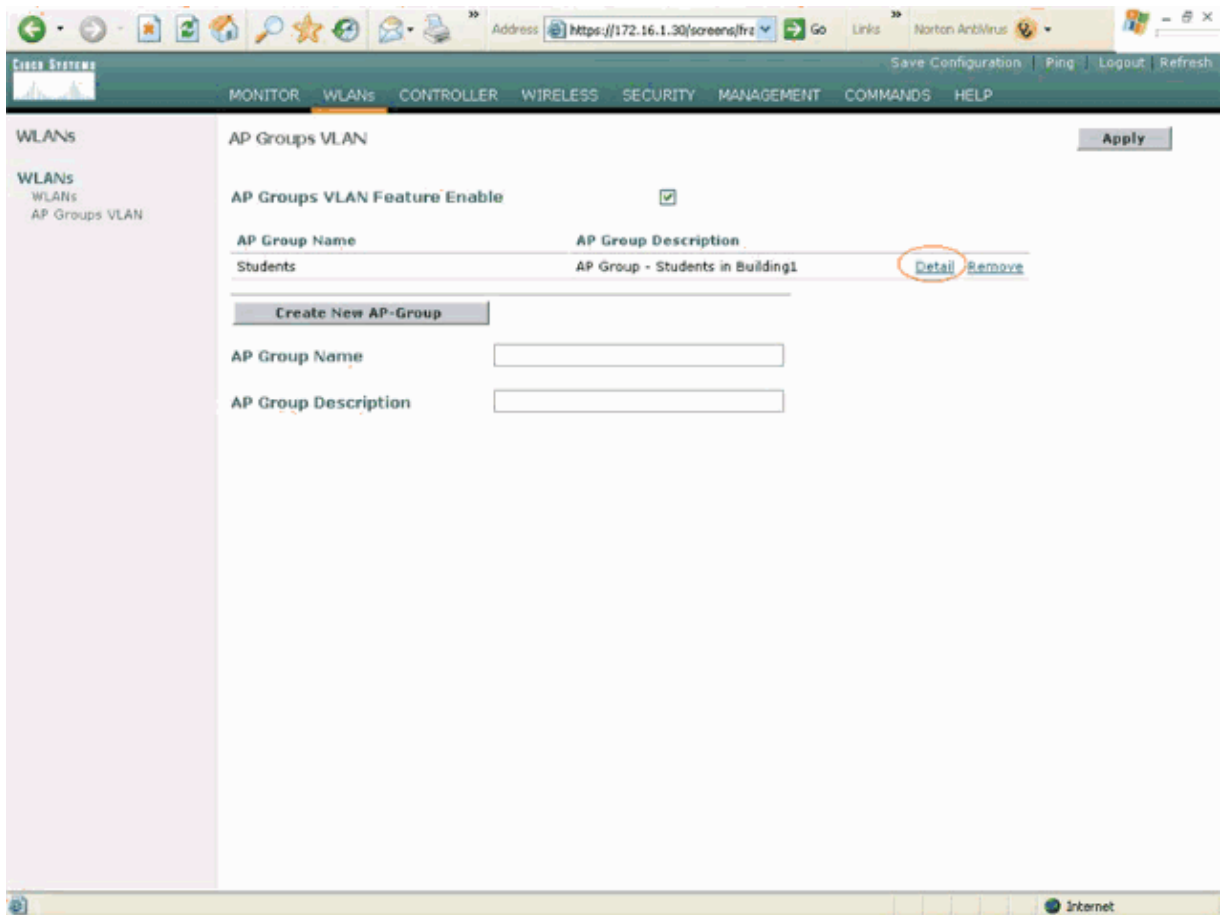
```
config location enable/disable
```

Note: Issue this command in order to define the location string (AP group name) using the CLI:

```
config location add <string value for location>
```

4. For the new AP group called Students, click on **Detail**. Select the appropriate SSID from the WLAN SSID pull-down menu and the interface with which you wish to map this AP group.

For the AP group Students, select the SSID **School** and map it to the **Students-VLAN** interface. Click on **Add Interface Mapping**. These screenshots show an example:



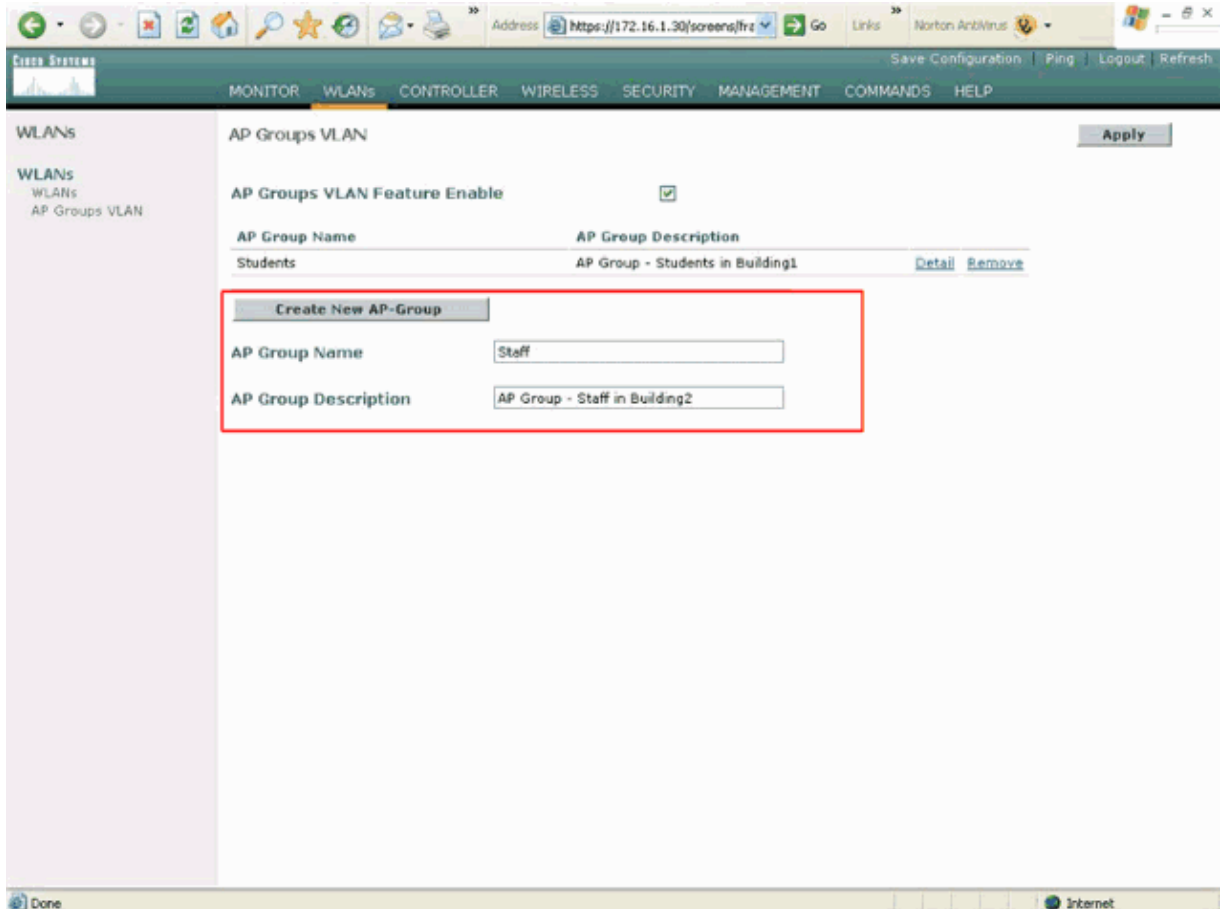
5. Click on **Apply**.

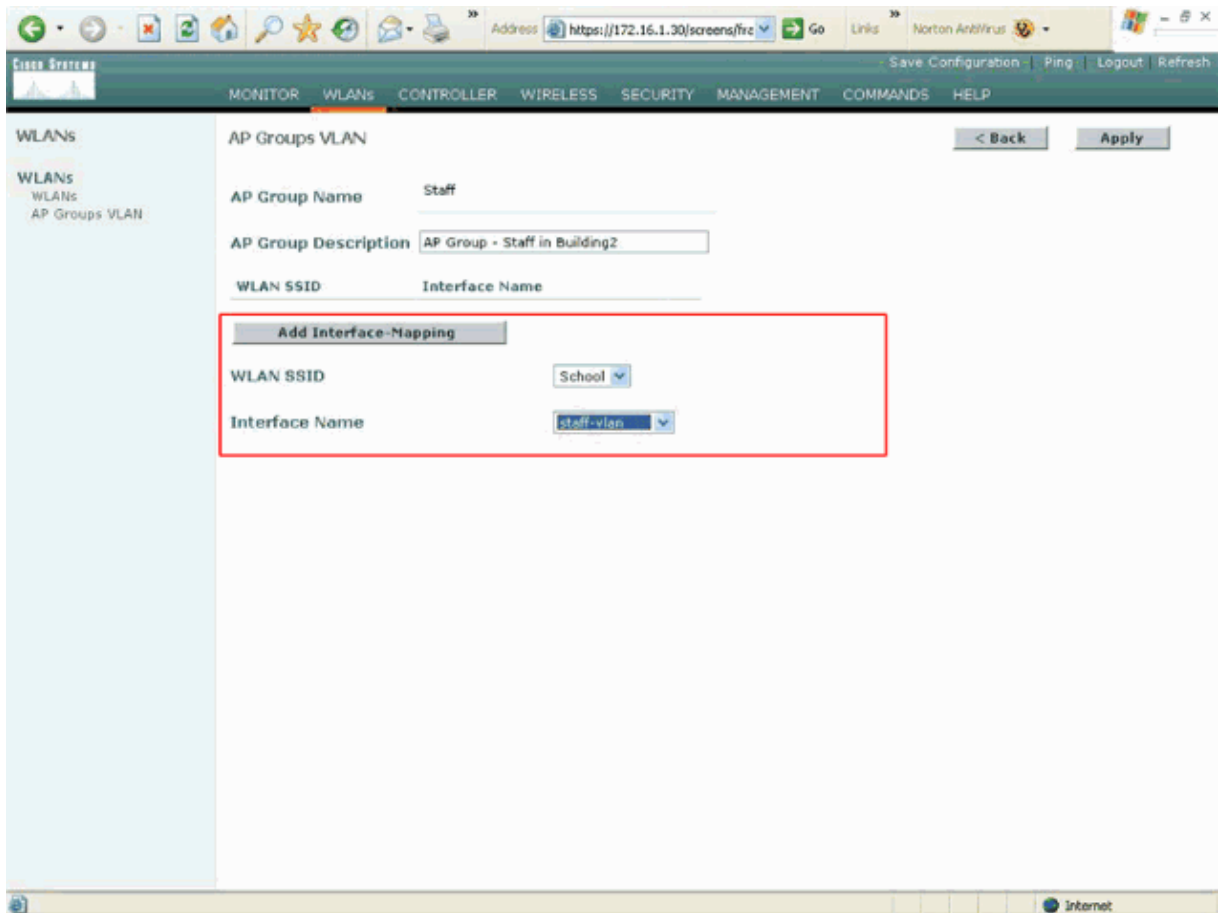
Note: Issue this command in order to map the interface to the AP groups through the CLI:

```
config location interface-mapping add <location> <WLAN id> <Interface Name>
```

6. Repeat steps 3 through 5 in order to create the second AP group called **Staff**.

For the AP group Staff, select the SSID **School** and map it to the interface **Staff-VLAN**. These screenshots show an example:





Starting from Wireless LAN Controller Version 4.1.181.0, the commands to configure AP groups with the CLI have changed. In Version 4.1.181.0, these are the commands used to configure a new AP group with the CLI:

In order to enable an AP group, use this:

```
config wlan apgroup add <apgroup name> <description>
```

In order to delete an existing group, use this:

```
config wlan apgroup delete <apgroup name>
```

In order to add a description to the AP group, use this:

```
config wlan apgroup description <apgroup name> <description>
```

In order to create a new AP group/WLAN/interface mapping, use this:

```
config wlan apgroup interface-mapping add <apgroup name> <WLAN Id> <Interface Name>
```

Assign LAPs to the Appropriate AP Group

The final task is to assign the LAPs to the appropriate AP groups. There are five LAPs in Building 1 and five LAPs in Building 2. Assign LAPs in Building 1 to the Students AP group and the LAPs in Building 2 to the Staff AP group.

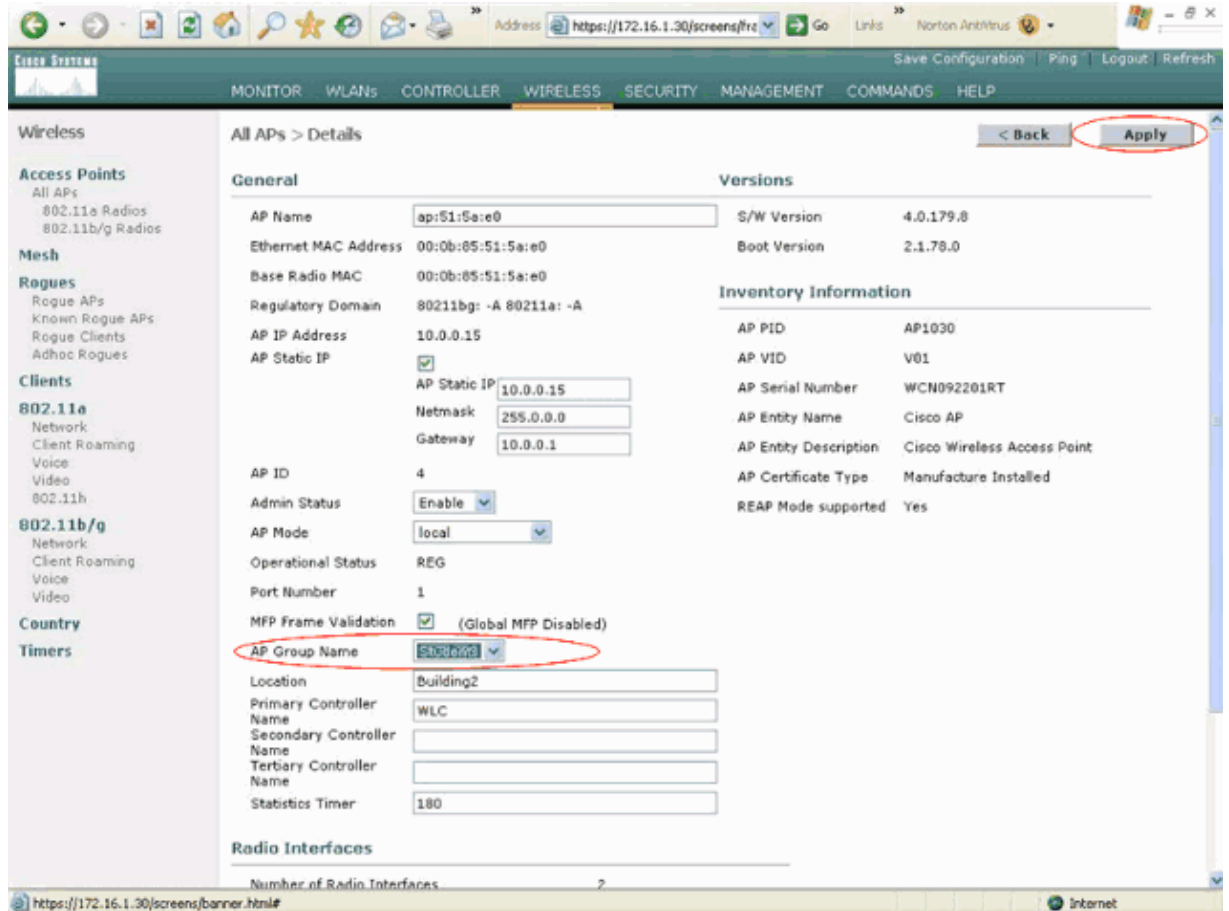
Complete these steps in order to do this:

1. Go to the controller GUI and choose **Wireless > Access Points > All APs**.

The All APs page lists the LAPs that are presently registered to the controller.

2. Click on the **Detail** link for an LAP in order to assign an LAP to an AP group.

In the All APs > Detail page for the selected LAP, choose the appropriate AP group from the AP Group name pull-down menu.



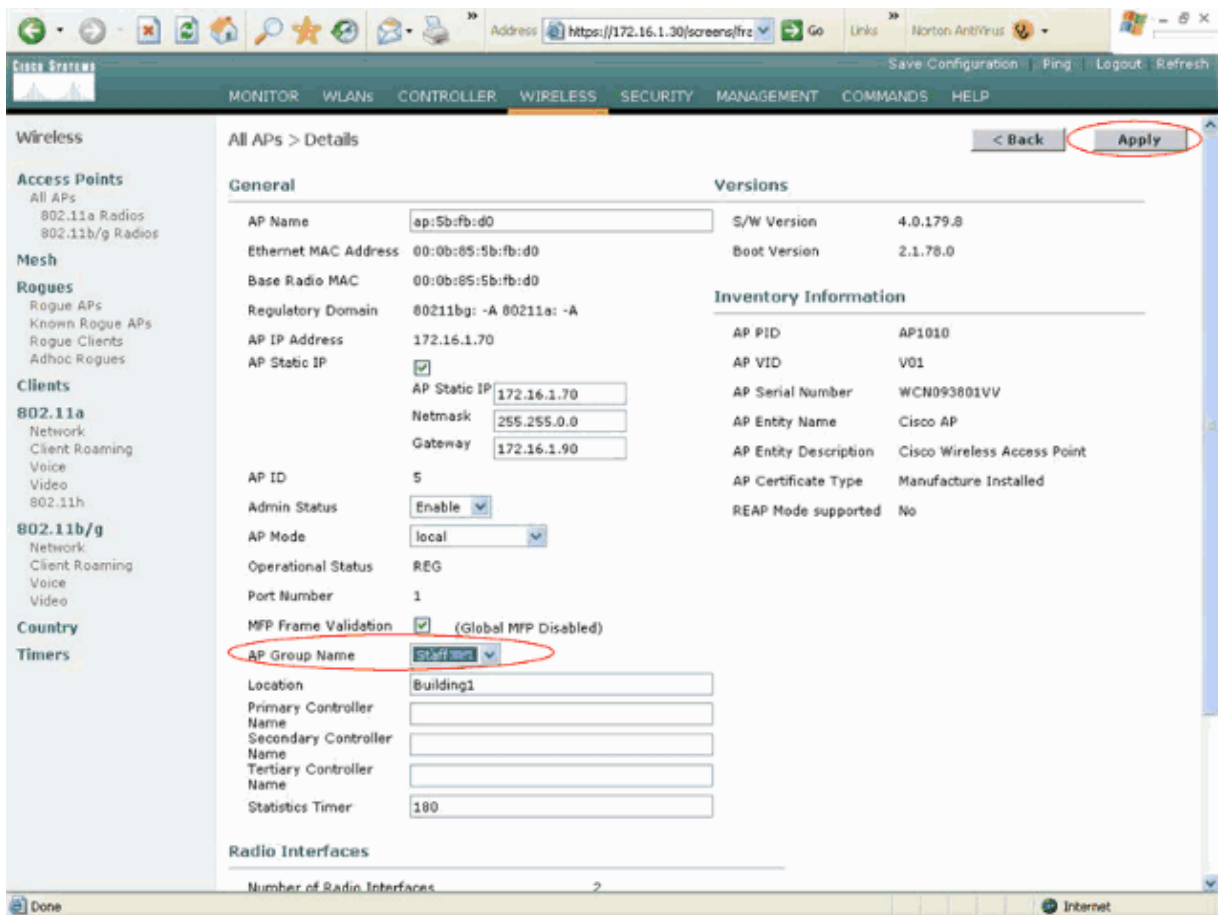
In this example, one of the LAPs in Building 1 is assigned to the Students AP group. Click on **Apply**.

Note: Issue this command from the controller CLI in order to assign an AP group to an LAP:

```
config ap group-name <string value for location> <ap name>
```

3. Repeat steps 1 and 2 for all five LAPs that need to be mapped to the AP group Students and for the five LAPs that need to be mapped to the AP group Staff.

Here are the screenshots for one of the LAPs mapped to the AP group Staff:



Upon completion of these steps, you have configured two AP groups called Staff and Students and mapped five LAPs in Building 1 to AP group Students and five LAPs in Building 2 to the AP group Staff. Now when clients from Building 1 connect to the WLAN using the SSID **School**, they are mapped to AP group Students and are assigned an IP address from the DHCP scope defined for the dynamic interface Student–VLAN. Similarly, when clients from Building 2 connect to the WLAN using the SSID **School**, they are mapped to AP group Staff and are assigned an IP address from the DHCP scope defined for the Staff–VLAN dynamic interface.

Note: When you configure two controllers to allow the APs to join them and define AP groups on them so that the client roams from one AP group to another across different controllers, the SSIDs are mapped to different interfaces on the different AP groups. Clients are not able to receive multicast packets because of your current multicast implementation. Multicast mode does not work with any interface override functionality which includes AP groups, dynamic VLAN assignments, and so forth.

Verify

In order to verify the configuration, you can use the **show location summary** command. Here is an example.

```
(Cisco Controller) >show location summary

Status..... enabled

Site Name..... Staff
Site Description..... AP Group - Staff in Building2
WLAN..... 2
Interface Override..... staff-vlan

Site Name..... Students
Site Description..... AP Group - Students in Building1
```

```
WLAN..... 1
  Interface Override..... student-vlan
```

For WLCs that run version 4.1.181.0 or later, use this command to verify the AP Group VLAN configuration.

```
show wlan apgroups
```

In order to verify this setup, this example shows what happens when a client is associated with one of the LAPs in Building 1. When the client comes up in Building 1, it associates with one of the LAPs in Building 1 using the SSID School. It automatically gets mapped to the dynamic interface Student-VLAN and is assigned an IP address from the scope defined for the Student-VLAN interface.

When a client first associates to LAP1 on a controller, the controller applies the AP Group VLAN override policy as configured. When the client roams to another LAP on the same controller, the policy specified by the LAP1 AP Group VLAN is re-applied. During a single session, a client does not change VLANs when it roams among APs on a single controller to make for seamless roaming.

When roaming across LAPs associated to different controllers, the system behaves according to the regular roaming rules.

When a client associates with an AP on the second controller, the client is mapped to the interface specified by the override. If the AP is a member of the same AP group, you have a Layer 2 mobility event.

If the AP is a member of a different AP group, then you have a Layer 3 mobility event. The VLAN is used to determine the mobility event instead of the configured interface of the WLAN.

Refer to the Overview of Mobility section of Configuring Mobility Groups for more information on how roaming happens in a WLC based WLAN.

Troubleshoot

You can use these debug commands to troubleshoot your configuration.

- **debug dot11 mobile enable** Use this command in order to configure the debug of 802.11 mobile events.

If you test mobility, you can also use these debugs:

- **debug mobility handoff enable** Use this command in order to begin to debug mobility options.
- **debug pem {packet/events}** Use this command in order to configure the access policy manager debug options.

- ◆ Enter **packet** to configure the debug of policy manager events.
- ◆ Enter **events** to configure the debug of policy manager State Machine.

NetPro Discussion Forums – Featured Conversations

Networking Professionals Connection is a forum for networking professionals to share questions, suggestions, and information about networking solutions, products, and technologies. The featured links are some of the most recent conversations available in this technology.

NetPro Discussion Forums – Featured Conversations for Wireless

Wireless – Mobility: WLAN Radio Standards

Wireless – Mobility: Security and Network Management
Wireless – Mobility: Getting Started with Wireless
Wireless – Mobility: General

Related Information

- [Deploying Cisco 440X Series Wireless LAN Controllers](#)
- [Cisco Wireless LAN Controller Configuration Guide, Release 4.1](#)
- [Wireless Support Page](#)
- [Technical Support & Documentation – Cisco Systems](#)

All contents are Copyright © 2006–2007 Cisco Systems, Inc. All rights reserved. Important Notices and Privacy Statement.

Updated: May 11, 2007

Document ID: 71477
