

Unity for Lotus Domino – Manually Update the Lotus Domino Directory

Document ID: 68176

Introduction

Prerequisites

Requirements

Components Used

Conventions

Open the Template and Database

Rename Design Elements

Copy the DUC Design Elements

NetPro Discussion Forums – Featured Conversations

Related Information

Introduction

This is an elaboration of steps documented in the csUCAAdminGuide.nsf section entitled *Installing the DUC administration component for Cisco – To manually update the Domino Directory*.

Due to the design of the csAdmin installation, you can only update names.nsf when you run IBM Lotus Domino Unified Communications (DUC) csAdmin install. Use these steps when you configure a secondary subscriber address book with Cisco Unity 4.0(5) or later.

The procedures in this document explain how to:

1. Open the csucadmin.ntf design template and the secondary subscriber address book database.
2. Rename the design elements.
3. Manually copy design elements from the template to the database.



Caution: Back-up any Lotus databases you plan to alter before you start these procedures.

Prerequisites

Requirements

Cisco recommends that you have knowledge of Lotus Domino administration and design.

Components Used

The information in this document is based on these software and hardware versions:

- Cisco Unity 4.0(5) or later
- Lotus Domino R6 or later
- Lotus DUC 1.2.2 or later

The information in this document was created from the devices in a specific lab environment. All of the devices used in this document started with a cleared (default) configuration. If your network is live, make sure that you understand the potential impact of any command.

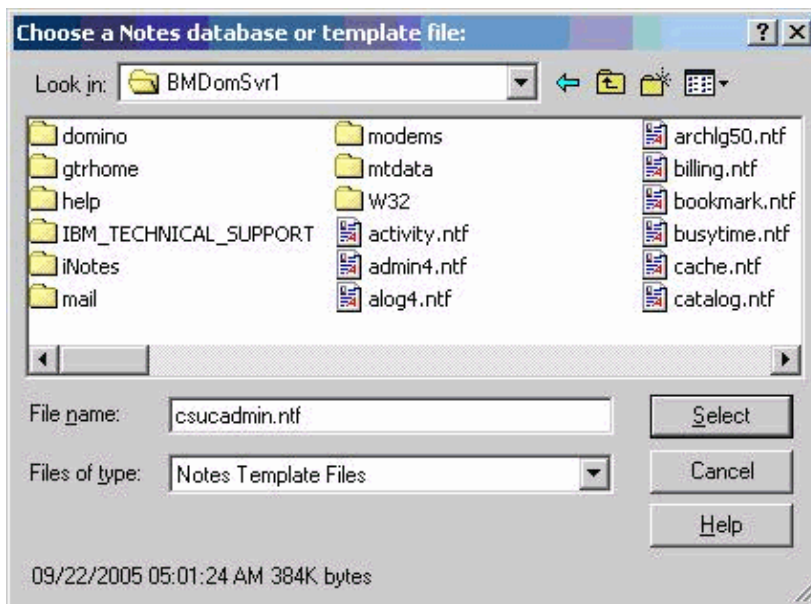
Conventions

Refer to Cisco Technical Tips Conventions for more information on document conventions.

Open the Template and Database

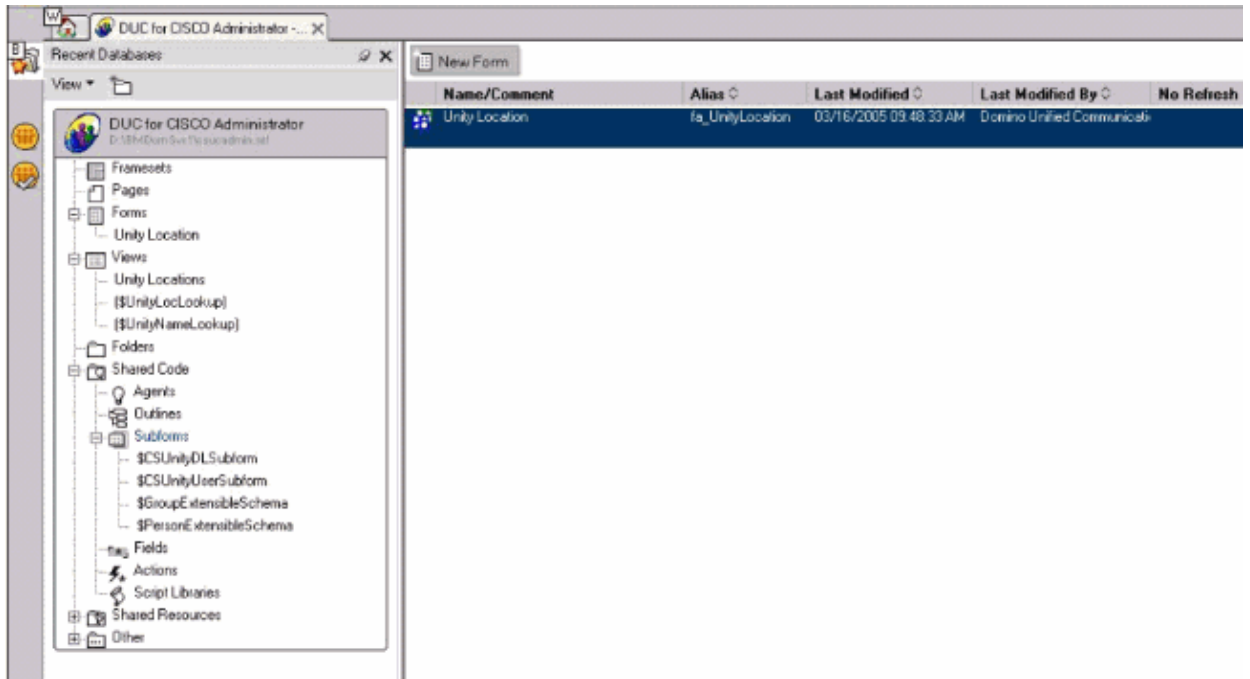
Complete these steps:

1. Open Lotus Domino Designer.
2. Log on as an Administrator who has access to all databases.
3. Select **File > Database > Open**.
4. Choose your Domino server from the Server drop-down.
5. Browse to your Domino data directory from the Look in drop-down in the Choose a Notes Database window.
6. Type **csucadmin.ntf** in the File name field.

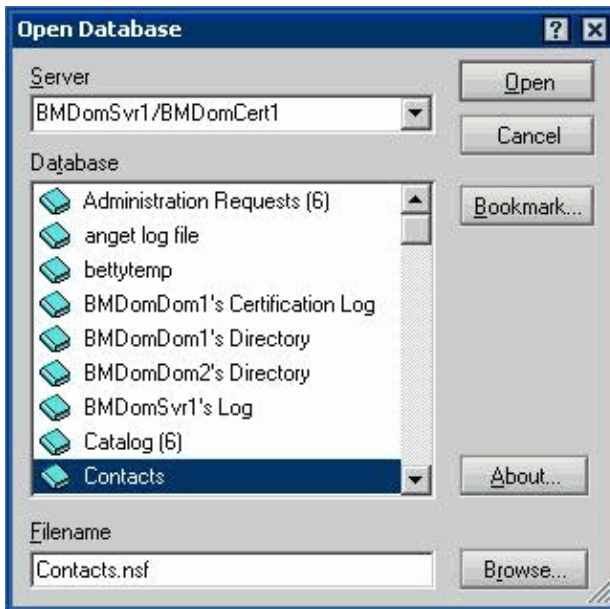


7. Click **Select**.
8. Click **Open**.

Your view appears similar to this window. The csucadmin template shows up as a bookmark on the left-hand side.

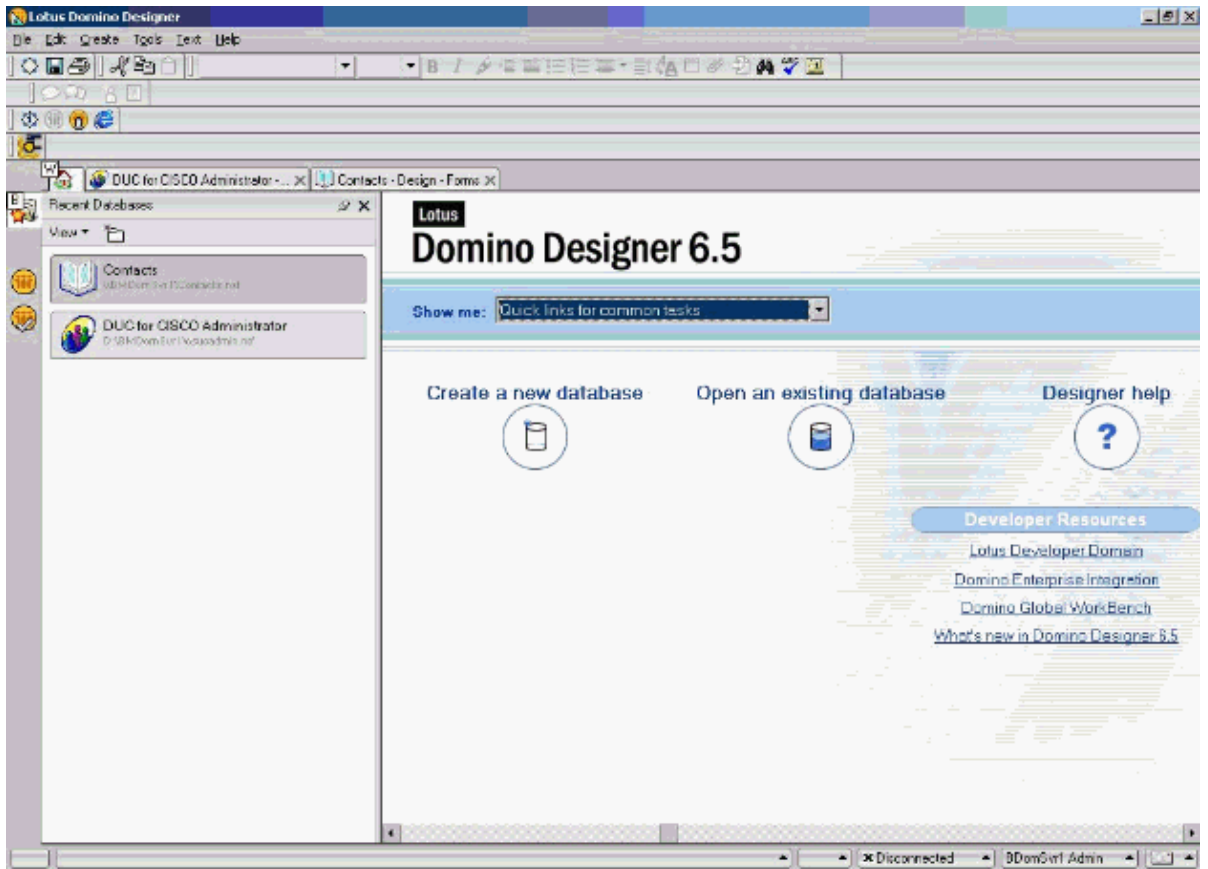


9. Open the address book you wish to add as your secondary subscriber address book. This example uses contacts.nsf as the secondary subscriber address book name.
10. Select **File > Database > Open**.
11. Choose the server with **contacts.nsf** from the Server drop-down in the Open Database window.
12. Choose **contacts.nsf** from the list, or browse to the file.



13. Click **Open** in the Open Database window.

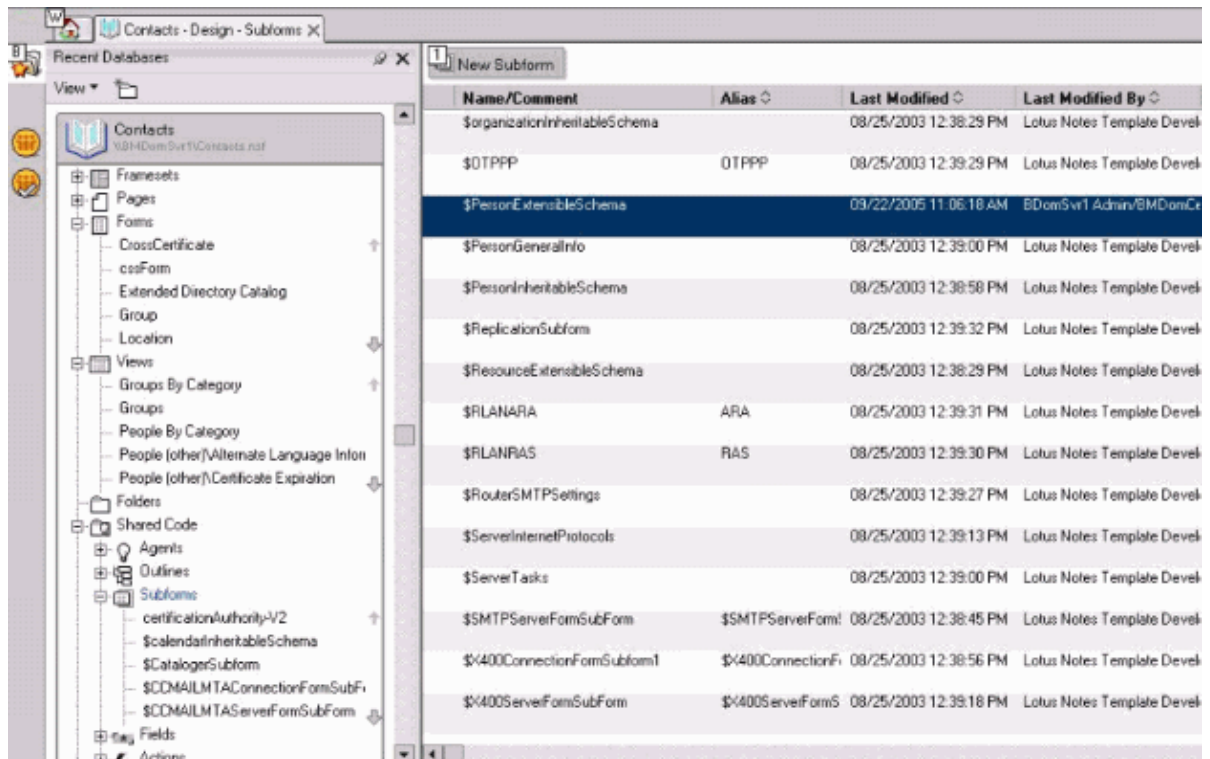
When you have completed these steps, the Domino Designer contains bookmarks for both csucadmin (the template with design elements) and contacts.



Rename Design Elements

In order to complete the updates, copy design elements from csucadmin.ntf to your secondary address book (this example uses contacts.nsf as the secondary address book name). Some Domino directories might already contain the `$GroupExtensibleSchema` and `$PersonExtensibleSchema` elements in the Subforms view. If this is the case for your secondary address book, complete these steps to rename the existing elements before you continue on to copy design elements.

1. Click the **Contacts** bookmark.
2. Click **Shared Code** and then click **Subforms** in the Bookmark view.
3. Double-click **\$PersonExtensibleSchema**.
4. Click **OK** at the window that says your changes may be lost.



5. Go the Design menu and choose **Subform Properties**.
6. Type the new name of the design element in the Subform window.
7. Close the window.
8. Close the \$PersonExtensibleSchema subform and click **Yes** to save the subform.
9. Repeat these steps for the \$GroupExtensibleSchema.

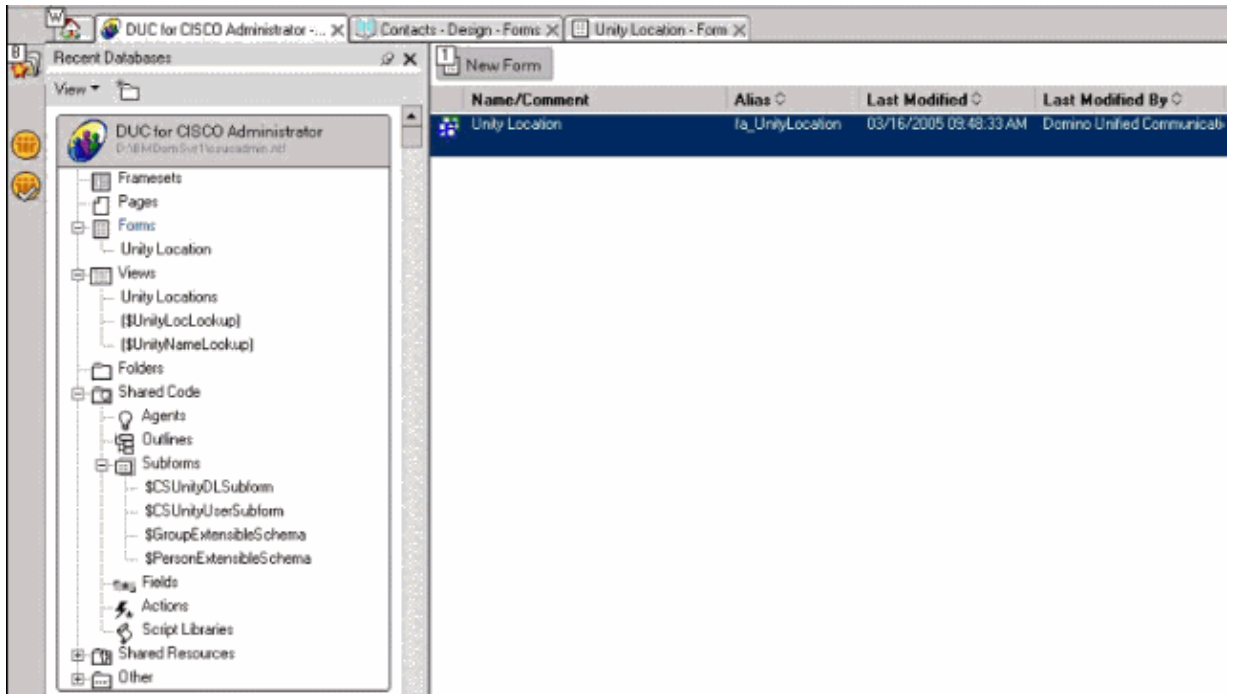
Copy the DUC Design Elements

Copy these eight design elements from csucadmin.ntf to contacts.nsf. In order to do this, highlight one element in csucadmin, copy it, and then paste it to contacts.nsf. Repeat this for all eight design elements.

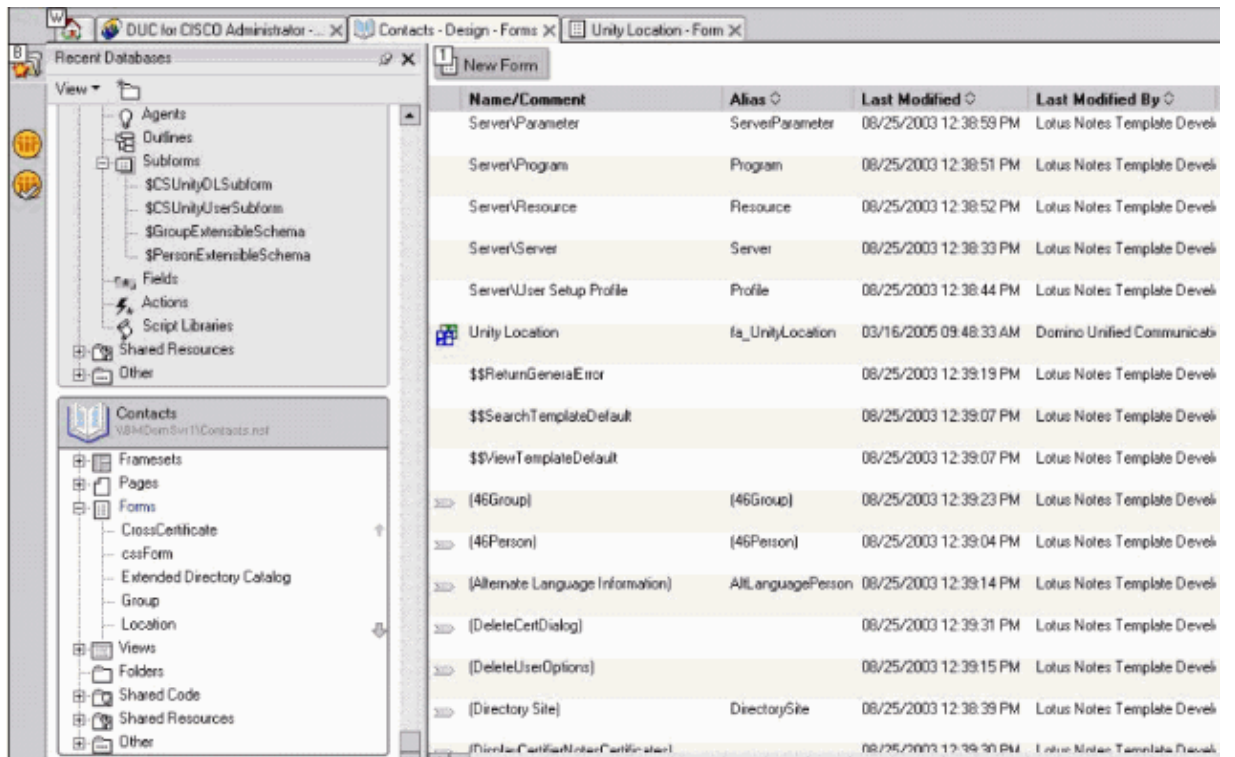
- **Forms**
 - ◆ Unity Location
- **Views**
 - ◆ Unity Locations
 - ◆ (\$UnityLocLookup)
 - ◆ (\$UnityNameLookup)
- **Subforms (under Shared Code)**
 - ◆ \$CSUnityDLSubform
 - ◆ \$CSUnityUserSubform
 - ◆ \$GroupExtensibleSchema
 - ◆ \$PersonExtensibleSchema

Complete these steps:

1. Click **Forms** from csucadmin in the Bookmark view.
2. Right-click **Unity Location** and choose **Copy**.



3. Switch to **contacts.nsf**.
4. Click **Forms** in the Bookmark view.
5. Right-click anywhere in the center window, and choose **Paste**. The Unity Location design element appears.



6. Repeat these steps for the remaining design elements. If your Domino directory already contains the \$GroupExtensibleSchema and \$PersonExtensibleSchema elements in the Subforms view, make sure you follow the instructions in the Rename Design Elements procedure before you copy these elements.

NetPro Discussion Forums – Featured Conversations

Networking Professionals Connection is a forum for networking professionals to share questions, suggestions, and information about networking solutions, products, and technologies. The featured links are some of the most recent conversations available in this technology.

NetPro Discussion Forums – Featured Conversations for Voice
Service Providers: Voice over IP
Voice & Video: Voice over IP
Voice & Video: IP Telephony
Voice & Video: IP Phone Services for End Users
Voice & Video: Unified Communications
Voice & Video: IP Phone Services for Developers
Voice & Video: General

Related Information

- [Voice Technology Support](#)
- [Voice and IP Communications Product Support](#)
- [Recommended Reading: Troubleshooting Cisco IP Telephony](#)
- [Technical Support & Documentation – Cisco Systems](#)

All contents are Copyright © 2006–2007 Cisco Systems, Inc. All rights reserved. Important Notices and Privacy Statement.

Updated: Jul 26, 2007

Document ID: 68176
