

WLAN Radio Coverage Area Extension Methods

Document ID: 66091

Introduction

Prerequisites

Requirements

Components Used

Conventions

Methods You Can Use to Extend the Radio Coverage Area of the WLAN

Use APs in Repeater Mode

Use a Secondary AP in Access Point Mode with Non-overlapping Channels

Change the Transmitter Power Level Parameter of the Existing AP to Extend the Coverage

Position the APs Optimally

Related Information

Introduction

This document explains four possible ways in which you can extend the radio coverage area in a WLAN network.

Prerequisites

Requirements

Cisco recommends that you have knowledge of these topics:

- Configuration of Cisco Aironet Access Points (AP)
- How to perform a site survey

Components Used

The information in this document is based on these software and hardware versions:

- Cisco Aironet 1200 series APs that run Cisco IOS® software
- Cisco Aironet client adapters

The information in this document was created from the devices in a specific lab environment. All of the devices used in this document started with a cleared (default) configuration. If your network is live, make sure that you understand the potential impact of any command.

Conventions

Refer to Cisco Technical Tips Conventions for more information on document conventions.

Methods You Can Use to Extend the Radio Coverage Area of the WLAN

The radio coverage area that a single AP provides is not sufficient to serve the entire WLAN in many situations. The solution is to increase the radio coverage area. There are different options available that you can use to increase the radio coverage area. These sections explain each of these different options, and provide configuration examples:

- Use APs in Repeater Mode
- Use a Secondary AP in Access Point Mode with Non-overlapping Channels
- Change the Transmitter Power Level Parameter of the Existing AP to Extend the Coverage
- Position the APs Optimally

Use APs in Repeater Mode

You can configure APs to act as repeaters. In this mode, the AP is not connected to the wired LAN. Instead, the AP is placed within the radio range of the AP that is connected to the wired LAN (the root AP). In this scenario, the repeater AP associates with the root AP, and extends the range of the radio coverage area. This enables Wireless Clients that reside away from the root AP to gain access to the WLAN network. You can configure either the 2.4 GHz radio or the 5 GHz radio as a repeater. In APs with two radios, only one radio can be a repeater. You must configure the other radio as a root radio.

When you configure an AP as a repeater, the Ethernet port on that AP does not forward traffic. The advantage with the repeater mode in APs is that this mode helps to extend the radio coverage area of a WLAN in situations where connectivity to the wired LAN is not possible. Also, there must be a fifty percent overlap in coverage area with the root AP for the repeater mode to function.

Repeater APs forward traffic from the wireless clients to either a wired AP or to another repeater AP. In cases where there is a redundant path to the wired network, the repeater AP chooses the best path based on signal strength and other performance-based parameters. By default, when there is more than one wired AP, the repeater AP associates to the AP that has the best connectivity. On the other hand, you can also specify the AP to which the repeater must associate manually.

Repeater APs do have disadvantages. When you implement repeater APs in WLANs, the throughput of the network decreases by half with every repeater AP that you add to the chain. This is because the repeater AP must receive and then re-transmit each packet on the same channel. Another disadvantage is that a non-Cisco wireless client device can face some problems when such a device tries to associate with repeater APs. You must enable "Aironet extensions" on the parent (root) AP as well as the repeater APs when you set up APs in repeated mode. Aironet extensions, which are enabled by default, improve the ability of the AP to understand the capabilities of Cisco Aironet client devices associated with the AP. However, some of the non-Cisco wireless clients do not work with Aironet extensions enabled on the APs. So, for WLAN environments where you use a mixture of Cisco and non-Cisco clients, extension of the radio coverage through the repeater mode APs is not a viable option.

The next two sections explain with a configuration example how to set up repeater mode in APs.

Figure 1 Network Diagram for Method 1

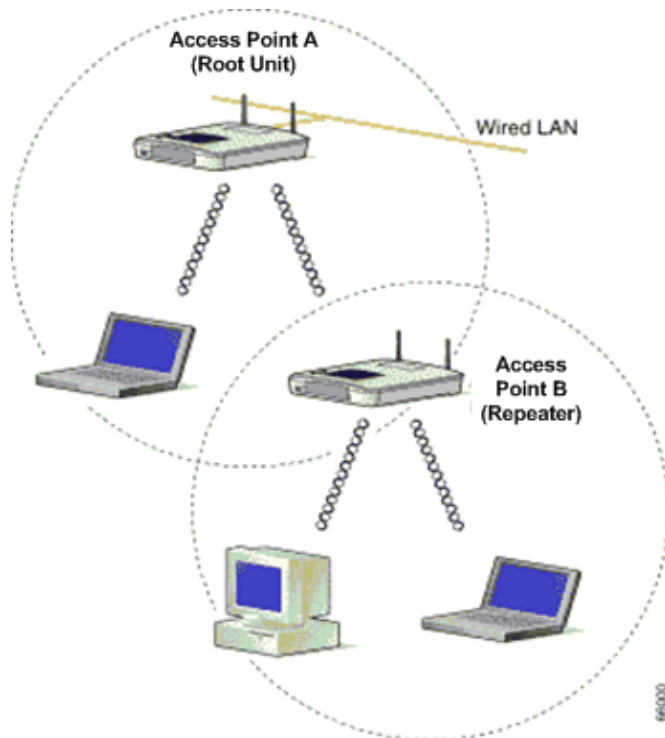


Figure 1 shows two Cisco Aironet APs, namely, AP A and AP B. AP A is connected to the wired network (the root unit). Wireless clients are associated with AP A. AP A uses the SSID "Cisco" for communication.

You need to configure AP B in repeater mode in order to extend the radio coverage area. Both AP A and AP B are configured to be in the same IP subnet.

Note: When you configure an AP as a repeater, ensure that these parameters on the repeater AP are different from that of the root AP.

1. IP address of the Repeater AP
2. Station Role on the Repeater AP (must be Repeater)

Configuration of AP B through the CLI

This section explains the step-by-step configuration required on AP B to set up the AP as a repeater.

```
Access Point B# configure terminal
```

```
!--- Enter global configuration mode.
```

```
Access Point A(config)# interface BVI
```

```
Access Point A(config-if)# ip address 10.0.0.5 255.0.0.0
```

```
!--- Configure an IP address for the bridge virtual interface (BVI) interface.
```

```
!--- The repeater must be in the same subnet as the root AP.
```

```
Access Point B(config)# interface dot11radio 0
```

```
!--- Enter interface configuration mode for the radio interface.
```

```
!--- The 2.4 GHz radio is radio 0, and the 5 GHz radio is radio 1.
```

```

Access Point B(config-if)# ssid Cisco

!--- Create the SSID that the repeater uses to associate to a root AP.

!--- In the next step, designate this SSID as an infrastructure SSID.
!--- If you created an infrastructure SSID on the root AP,
!--- create the same SSID on the repeater. In this case, use "Cisco" as the SSID,
!--- because this is the SSID that is configured on AP A.

Access Point B(config-ssid)# infrastructure-ssid

!--- Designate the SSID as an infrastructure SSID. The repeater uses this SSID
!--- to associate to the root AP. Infrastructure devices must associate
!--- to the repeater AP using this SSID unless you also enter the
!--- optional keyword.

Access Point B(config-ssid)# exit

!--- Exit SSID configuration mode and return to radio interface configuration
!--- mode.

Access Point B(config-if)# station-role repeater

!--- Set the AP's role in the wireless LAN to repeater mode.

Access Point B(config-if)# dot11 extensions aironet

!--- Enables Aironet extensions if disabled previously.

Access Point B(config-if)# parent 1 0987.1234.h345 900
Access Point B(config-if)# parent 2 7809.b123.c345 900

!--- The parent command allows the user to specify a list of APs
!--- with which the repeater associates. The repeater tries to associate
!--- with the APs given using the parent command in a sequential order.

Access Point B(config-if)# end

!--- Return to privileged EXEC mode.

```

The value "900" in the **parent** command specifies the timeout value (optional). The timeout value is the amount of time for which the repeater tries to associate to a parent AP before the repeater tries the next parent. You can enter a timeout value between 0 and 65535 seconds. You can define a maximum of four parent APs with the **parent** command.

Verify Repeater Operation

After you configure AP B as a repeater, the LEDs on the root AP and the repeater AP confirm whether the repeater AP functions properly.

The status LED on the root AP must be steady green. The green light indicates that the repeater AP is associated with the root AP. The assumption is that there are no clients associated with the root AP.

The status LED on the repeater AP also must be steady green when it is associated with the root AP and the repeater has client devices associated to it. The status LED of the repeater flashes (steady green for 7/8 of a second and off for 1/8 of a second) when the repeater AP is associated with the root AP but the repeater has no associated client devices. You can also check the association table on the root AP and the repeater AP to check if the configuration works.

Use a Secondary AP in Access Point Mode with Non-overlapping Channels

The primary use of APs in repeater mode is in situations where you cannot connect the second AP to the wired network. You must consider the use of repeater mode to extend the radio coverage only under these two conditions:

1. In order to serve clients that do not require high throughput, because repeaters extend the coverage area of your wireless LAN, but drastically reduce throughput.
2. When most if not all client devices that associate with the repeaters are Cisco Aironet Clients. Non-Cisco client devices sometimes cannot communicate with repeater APs.

In order to overcome these disadvantages, you can use the second method to extend the coverage area. The second method is to configure the secondary AP in AP mode with non-overlapping channels. You can use this method only if you can connect the second AP to the wired LAN. This method is the easiest to implement because this method does not require any additional configuration other than the basic configuration that you perform on the APs.

Figure 2 Network Diagram for Method 2

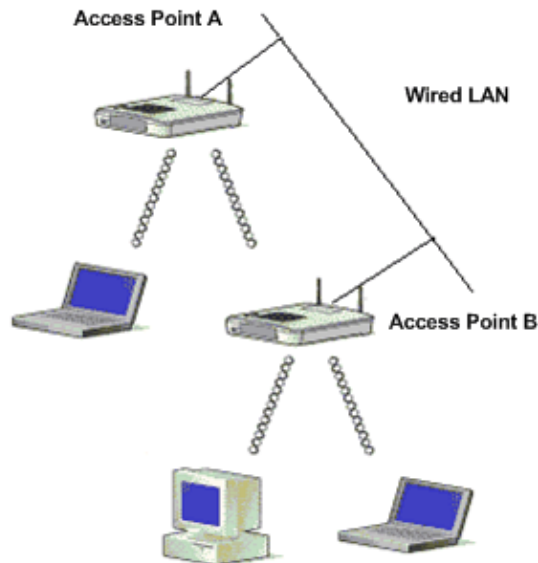


Figure 2 shows two Cisco Aironet APs connected to the same wired LAN. Both APs are in the same IP subnet. Configure all the APs on the same subnet in order to achieve seamless roaming. The connection of the APs in this way helps to extend the radio coverage area of the WLAN. The next section explains the configuration required to set up this scenario.

Secondary AP Configuration through the CLI

Configure AP A with the basic settings that include the setup of the IP address, RF channel, radio settings, SSID, and designate the role of the AP as AP root. Use these configuration commands to configure AP A:

```
Access Point A(config)# interface BVI

Access Point A(config-if)# ip address 10.0.0.1 255.0.0.0
```

When you connect the AP to the wired LAN, the AP links to the network through a BVI that the AP creates automatically. Instead of tracking separate IP addresses for the Ethernet and radio ports of the AP, the network uses the BVI interface. This is why you assign IP addresses to BVI interfaces instead of to individual interfaces.

The default channel setting for the AP radios is **least congested**. At startup, the AP scans for and selects the least-congested channel. For the most consistent performance after a site survey however, Cisco recommends that you assign a static channel setting for each AP. When you configure the channel that the AP uses, you must take care to ensure that non-overlapping channels are configured. In this example output, channels 1 and 6 (which are non-overlapping) are used on AP A and AP B:

```
Access Point A(config)# interface dot11radio 0

Access Point A(config-if)# channel 1

Access Point B(config-if)# ssid Cisco

Access Point B(config-ssid)# exit

Access Point A(config-if)# station-role root

Access Point A(config-if)# speed {[1.0] [11.0] [2.0] [5.5] [basic-1.0]
[basic-11.0] [basic-2.0] [basic-5.5] | range | throughput}
```

Note: The last command in this output appears over two lines here due to spatial considerations.

Note: When you configure the secondary AP in Access Point root mode, ensure that the channels that the adjacent APs use are non-overlapping. Non-overlapping channels are frequency bands that do not have a frequency that is common to each other. For example in the 2.4GHz range there are three channels that are non-overlapping (channels 1,6 and 11) . Therefore, when you deploy a secondary AP to extend the Radio Coverage, you can use the channel 1 for the first AP, channel 6 for the next adjacent AP and channel 11 for the third AP and then start with channel 1. If you use overlapping channels, Radio Frequency interference can occur, which leads to connectivity issues and results in poor throughput.

Set each data rate to **basic** or **enabled**, or enter **range** to optimize AP range or **throughput** to optimize throughput. Refer to Configuring Radio Settings for more information on the basic configuration on the AP.

The previous settings allow the AP to accept associations from wireless clients. In order to extend the radio coverage, apply the same configuration to the second AP (AP B) with some minor changes. These changes include the **BVI IP address**, and the **RF channel** that the secondary AP uses.

```
Access Point B(config)# interface BVI
```

```

Access Point B(config-if)# ip address 10.0.0.6 255.0.0.0

Access Point B(config)# interface dot11radio 0

Access Point B(config-if)# channel 6

Access Point B(config-if)# ssid Cisco

Access Point B(config-ssid)# exit

Access Point B(config-if)# station-role root

Access Point B(config-if)# speed {[1.0] [11.0] [2.0] [5.5] [basic-1.0]
[basic-11.0] [basic-2.0] [basic-5.5] | range | throughput}

```

Note: The last command in this output appears over two lines here due to spatial considerations.

With this setup, clients that are not able to associate with AP A associate with AP B because AP B is on the same wired LAN. This extends the radio coverage area and ensures that the throughput is not affected as in the case of the repeater mode configuration.

When you implement this setup, ensure that you do not place the APs too close to each other. Too many APs in the same vicinity create radio congestion and RF interference that can reduce data throughput. A careful site survey can determine the best placement of APs for maximum radio coverage and optimized throughput.

Change the Transmitter Power Level Parameter of the Existing AP to Extend the Coverage

You can extend the radio coverage area of an AP when you modify the transmitter power level parameter.

The transmitter power (mW) setting determines the power level of the radio transmitter. The default power setting is the highest transmit power allowed in a regulatory domain. Government regulations define the highest power level for radio devices.



Caution: The transmitter power level setting must conform to the established standards of the country in which the setting is used.

Generally, the transmitted power is reduced to limit the effect of RF interference. The reduction has a negative effect on the radio coverage. The transmitted power is directly proportional to the radio coverage area. Therefore, the weaker the transmitted power, the smaller is the radio coverage area.

If you perform a proper site survey, and remove possible sources of RF interference, you can use the highest possible transmitted power value to extend the radio coverage area.

This CLI command under the radio interface changes the transmitted power level to the maximum on an AP:

```

Access Point (config)# interface dot11radio 0

Access Point (config-if)# power local maximum

```

Use this command to set the power level to maximum. Then, check how much throughput you have, and move the power level to a lower value until you reach a high throughput rate that stays consistent. You can also start from the lowest possible power level and increase the level until you reach a consistent throughput. This is because in some cases, if you do not boost the signal to the maximum level, the throughput and signal

strength can change continuously and not remain consistent.

Refer to [Configure Radio Transmit Power](#) for more information on how to configure the power level setting on the AP.

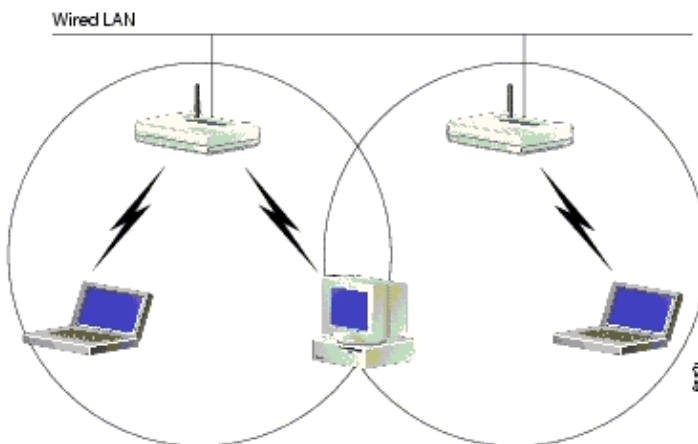
Position the APs Optimally

The placement of the APs at the correct places is an important factor that accounts in the extension of the coverage area of the AP. Too many APs in the same vicinity can create radio congestion and interference, and reduce the throughput.

A careful site survey can determine the best placement of APs for maximum radio coverage and throughput. Refer to [Performing a Site Survey](#) for more information on site survey.

In order to maximize the radio coverage area, ensure a fifteen percent overlap in the coverage area between any two APs in a WLAN. You can cover a large area with minimal system cost when you arrange the APs with minimal overlap in coverage area. The total bandwidth available to each mobile station depends on the amount of data each mobile station needs to transfer, and the number of stations in each cell. Seamless roaming is supported as a mobile station moves in and out of range of each AP, and maintains a constant connection to the wired LAN. Configure each AP (and adapter) with the same SSID to provide the roaming capability.

Figure 3 Position the APs Properly



Related Information

- [Wireless Support Page](#)
 - [Aironet 1200 Series Access Point Installation and Configuration Guide](#)
 - [Radio Coverage Options](#)
 - [Performing a Site Survey](#)
 - [Technical Support & Documentation – Cisco Systems](#)
-

[Contacts & Feedback](#) | [Help](#) | [Site Map](#)

© 2008 – 2009 Cisco Systems, Inc. All rights reserved. [Terms & Conditions](#) | [Privacy Statement](#) | [Cookie Policy](#) | [Trademarks of Cisco Systems, Inc.](#)
