

# Table of Contents

<b><u>CTC Issue with Internet Connection Firewall on Windows XP</u></b> .....	<b>1</b>
<u>Document ID: 65052</u> .....	1
<u>Introduction</u> .....	1
<u>Prerequisites</u> .....	1
<u>Requirements</u> .....	1
<u>Components Used</u> .....	1
<u>Conventions</u> .....	1
<u>Background Information</u> .....	2
<u>Problem</u> .....	2
<u>Cause</u> .....	2
<u>Solution</u> .....	2
<u>NetPro Discussion Forums – Featured Conversations</u> .....	4
<u>Related Information</u> .....	5

# CTC Issue with Internet Connection Firewall on Windows XP

Document ID: 65052

---

## Introduction

### Prerequisites

Requirements

Components Used

Conventions

### Background Information

### Problem

### Cause

### Solution

NetPro Discussion Forums – Featured Conversations

### Related Information

---

## Introduction

This document describes one reason why the Cisco Transport Controller (CTC) frequently loses connection with the Network Element (NE), and provides a solution.

## Prerequisites

### Requirements

Cisco recommends that you have knowledge of these topics:

- Cisco ONS 15454
- CTC
- Microsoft Windows XP Internet Connection Firewall (ICF)

### Components Used

The information in this document is based on these software and hardware versions:

- Cisco ONS 15454
- CTC
- Microsoft Windows XP

The information in this document was created from the devices in a specific lab environment. All of the devices used in this document started with a cleared (default) configuration. If your network is live, make sure that you understand the potential impact of any command.

### Conventions

Refer to Cisco Technical Tips Conventions for more information on document conventions.

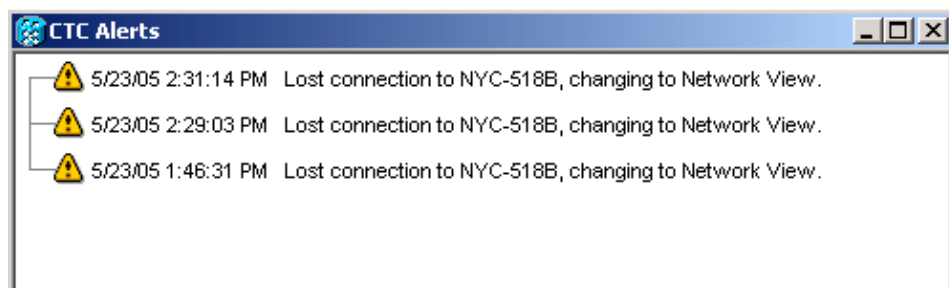
# Background Information

A firewall is a security system that acts as a protective boundary around a network. Windows XP includes Internet Connection Firewall (ICF) software. You can use ICF to restrict the information communicated between the Internet and the internal network. ICF also protects a single computer that is connected to the Internet through a cable modem, a DSL modem, or a dial-up modem.

## Problem

CTC frequently loses connections to one or more NEs, and a CTC alert message that states, "Lost Connection" appears (see Figure 1). Usually, the connection recovers within one to two minutes. However, any unsaved tasks before the disconnection are lost.

**Figure 1 CTC Alerts: Lost Connection Error**



Examine the corresponding ICF security log file, and identify packet drops between CTC and NE. The name of the default ICF security log file is **pfirewall.log**. This log file resides in the C:\windows directory by default.

```
2005-05-24 11:21:52 DROP TCP 172.16.105.216 172.18.3.144
1392 1060 60 S 864357245 0 8192
- - - RECEIVE
2005-05-24 11:21:55 DROP TCP 172.16.105.211
172.18.3.144 2494 1060 60 S 816386595 0 8192
- - - RECEIVE2005-05-24 11:21:55 DROP TCP 172.16.105.213
172.18.3.144 3596 1060 60 S 2821416302 0 8192
- - - RECEIVE
```

## Cause

This problem occurs due to an issue with the Windows XP ICF configuration. If ICF is enabled on a LAN connection with other computers, ICF blocks file and printer sharing. This is the root cause of the issue, and this message appears when ICF is enabled:

```
The ICF on CTC is enabled
```

## Solution

You must disable ICF in order to solve the problem.

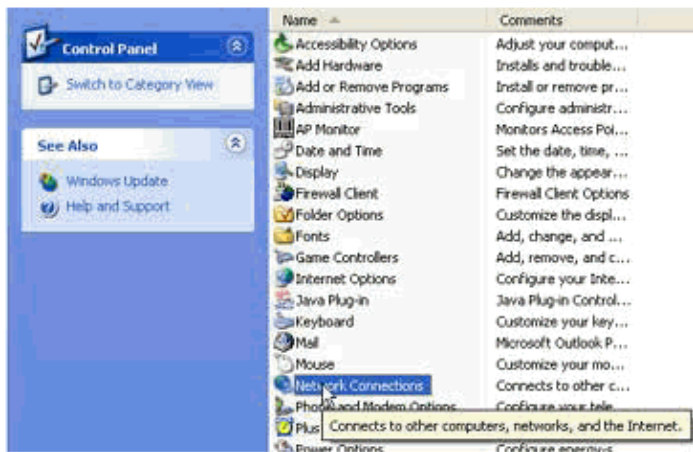
Complete these steps in order to disable ICF:

**Note:** You require **Administrator** privileges to perform these steps.

Cisco – CTC Issue with Internet Connection Firewall on Windows XP

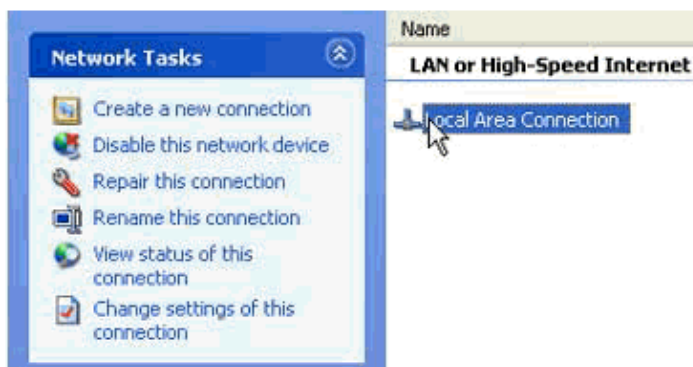
1. Select **Start > Settings > Control Panel**.
2. Double-click **Network Connection**.

**Figure 2 Network Connection**



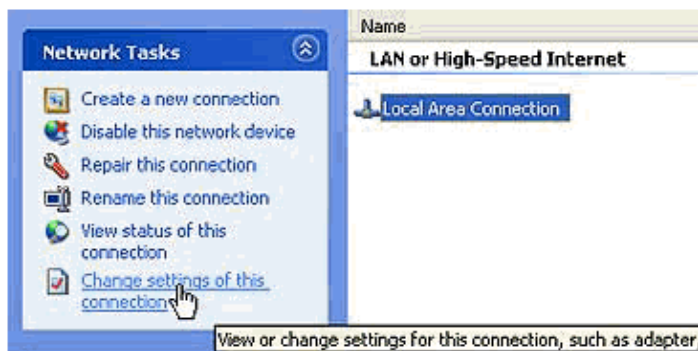
3. Select **Local Area Network**, or **High Speed Internet**, on the basis of whichever connection requires protection.

**Figure 3 Network Tasks: Select LAN or High-Speed Internet**



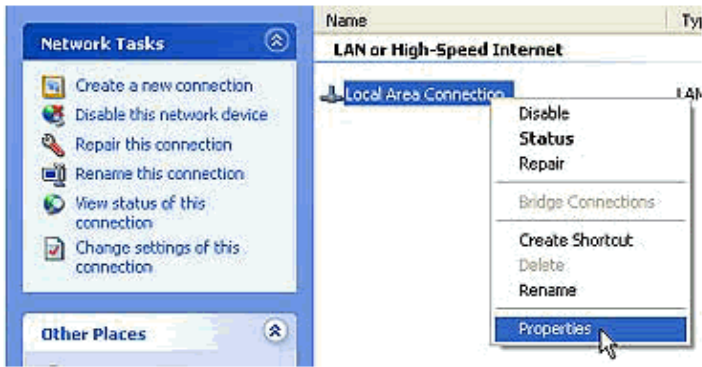
4. Check the **Change settings for this connection** check box in the Network Tasks option list.

**Figure 4 Network Tasks: Change Settings for this Connection**



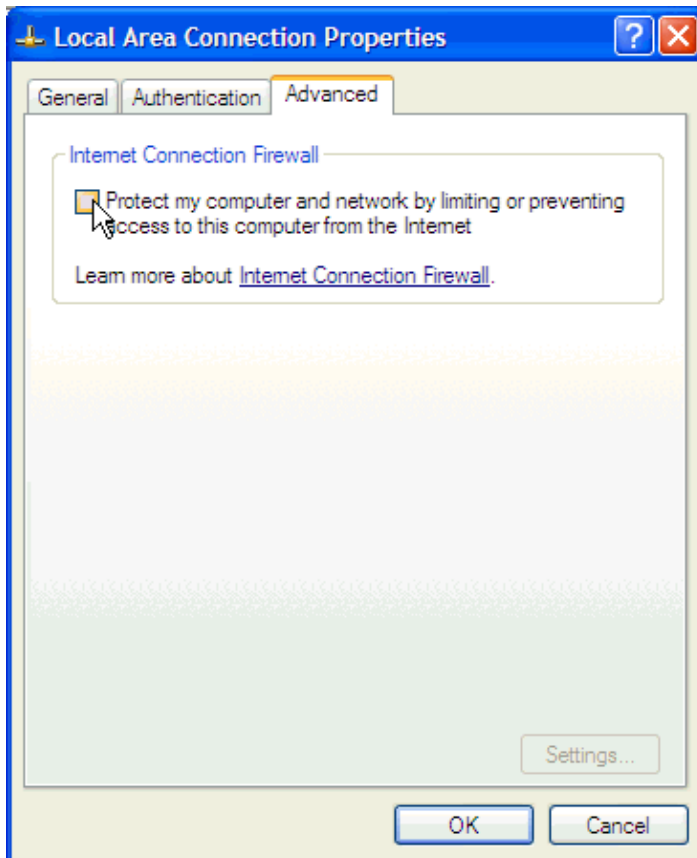
5. Right-click **Local Area Connection**, and select **Properties**.

**Figure 5 Network Tasks: Properties**



6. Click the **Advanced** tab in the Local Area Connection Properties dialog box.

**Figure 6 Local Area Connection Properties**



7. Clear the **Protect my computer and network by limiting or preventing access to this computer from the Internet** check box in the Advanced tab Internet Connection Firewall area in order to disable ICF.

After you disable ICF, CTC no longer loses connectivity, and works properly.

## NetPro Discussion Forums – Featured Conversations

Networking Professionals Connection is a forum for networking professionals to share questions, suggestions, and information about networking solutions, products, and technologies. The featured links are some of the most recent conversations available in this technology.

NetPro Discussion Forums – Featured Conversations for Optical

Service Providers: Optical Networking

Service Providers: Metro

---

## Related Information

- [Technical Support & Documentation – Cisco Systems](#)
- 

All contents are Copyright © 1992–2005 Cisco Systems, Inc. All rights reserved. Important Notices and Privacy Statement.

---

Updated: Dec 01, 2005

Document ID: 65052

---