

ICM Internet Script Editor User Rights

Document ID: 64071

Introduction

Prerequisites

- Requirements
- Components Used
- Conventions

Background Information

Assign User Rights

- Add the User(s)
- Create a Feature Control Set
- Assign the WebView and Internet Script Editor Only Attribute

NetPro Discussion Forums – Featured Conversations

Related Information

Introduction

This document describes how to define user rights when you edit Intelligent Contact Management (ICM) scripts with the Internet Script Editor in an ICM environment.

Prerequisites

Requirements

Readers of this document should have knowledge of:

- Cisco ICM

Components Used

The information in this document is based on:

- Cisco ICM version 5.0 and later

The information in this document was created from the devices in a specific lab environment. All of the devices used in this document started with a cleared (default) configuration. If your network is live, make sure that you understand the potential impact of any command.

Conventions

Refer to the Cisco Technical Tips Conventions for more information on document conventions.

Background Information

The Internet Script Editor uses a feature control to restrict users, or classes of users, from some or all of the ICM Script Editor or Internet Script Editor feature software functionality. For example, an ICM software administrator can restrict certain users from performing specific types of script edits.

The system administrator can use these methods to restrict access to the Internet Script Editor edit features:

- Edit options
- Script node control

An administrator can also use a combination of both feature control options. This document is centered on the script node control.

Assign User Rights

Complete these ordered procedures to assign user rights to the Internet Script Editor:

1. Add the User(s)
2. Create a Feature Control Set
3. Assign the WebView and Internet Script Editor Only Attribute

Add the User(s)

Complete these steps to add the user(s) to which the feature set is to be assigned:

1. Select **Start > Programs > ICM Admin Workstation > Configuration Manager** to start the Configuration Manager.

The Configuration Manager dialog box is displayed.

2. Select **Tools > List Tools > User List**.
3. Click **Add** in the User section (on the left) to add a new user.

The Attributes dialog box is displayed (see Figure 1).

4. Type the appropriate information in the Domain name, User name, Password, and Confirm password fields.

Figure 1 Add a User to Internet Script Editor

Attributes

Domain name * ICM60

User name * johndow

Description

Password *****

Confirm password *****

Can create other user accounts

Read only

WebView and Internet Script Editor only

Customer All Customers

Feature control set testfeatureset

5. Click the **WebView and Internet Script Editor only** check box (see arrow A in Figure 1).
6. Type a description in the Description field (optional).
7. Click the User List window **Save** button.

Create a Feature Control Set

The system administrator can use the ICM Configuration Manager on the ICM distributor to create a feature control set. Complete these steps to create a feature control set:

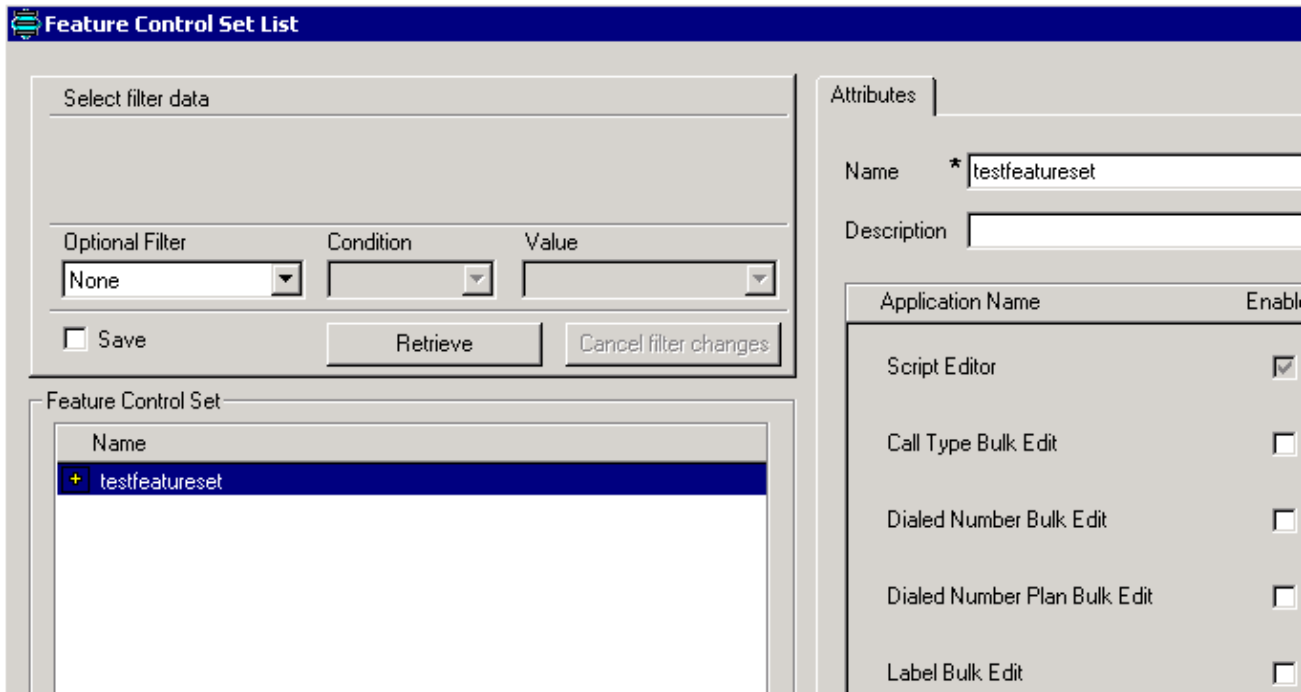
1. Select **Start > Programs > ICM Admin Workstation > Configuration Manager** to start the Configuration Manager.

The Configuration Manager dialog box is displayed.

2. Select **Tools > List Tools > Feature Control Set List**.
3. Click **Add** in the Feature Control Set section (on the left).
4. Click the **Attributes** tab.
5. Type the name of the feature control set in the Attribute tab Name field (see Figure 2).

The name is displayed in the Feature Control Set area (on the left) when you click the Attributes tab.

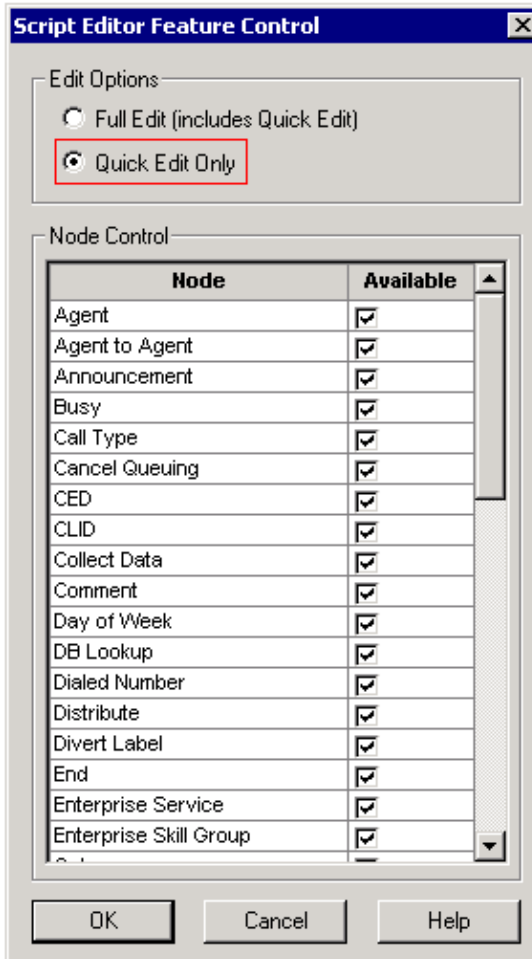
Figure 2 Feature Control Set List



6. Type a description in the Attribute tab Description field (optional).
7. Click the **&** button in the Advanced column (see Figure 2).

The Script Editor Feature Control window is displayed:

Figure 3 Script Editor Feature Control



8. Click the **Quick Edit Only** radio button.
9. Click **OK**.
10. Click the Feature Control Set List window **Save** button.

Assign the WebView and Internet Script Editor Only Attribute

Assign a user with the WebView and Internet Script Editor only attribute to a feature control set

1. Select **Start > Programs > ICM Admin Workstation > Configuration Manager** to start the Configuration Manager.

The Configuration Manager dialog box is displayed.

2. Select **Tools > List Tools > User List**.
3. Select the user for whom the feature control set is to be assigned.
4. Use the Feature control set drop down list box in the Attribute tab (see arrow B in Figure 1) to select the feature set for the user you selected in Step 3 .
5. Click **Save**.

NetPro Discussion Forums – Featured Conversations

Networking Professionals Connection is a forum for networking professionals to share questions, suggestions, and information about networking solutions, products, and technologies. The featured links are some of the most recent conversations available in this technology.

Related Information

- **Technical Support & Documentation – Cisco Systems**
-

All contents are Copyright © 2006–2007 Cisco Systems, Inc. All rights reserved. Important Notices and Privacy Statement.

Updated: Jul 27, 2007

Document ID: 64071
