

# Default Login Name and Password for the Cisco E-Mail Manager Option

Document ID: 63922

---

**Introduction**

**Prerequisites**

Requirements

Components Used

Conventions

**Log In to the Administration Desk**

**Log In to the Cisco E-Mail Manager Configuration**

**NetPro Discussion Forums – Featured Conversations**

**Related Information**

---

## Introduction

This document describes two default login names and their respective passwords for the Cisco E-Mail Manager Option. These default login names and passwords allow you to log in to these applications:

- Administration Desk
- Cisco E-Mail Manager Configuration in a Cisco Intelligent Contact Management (ICM) environment

**Note:** Cisco recommends that you change the default passwords after initial installation in order to enhance the security of your devices.

## Prerequisites

### Requirements

Cisco recommends you have knowledge of these topics:

- Cisco E-Mail Manager Option
- Cisco ICM

### Components Used

The information in this document is based on these software and hardware versions:

- Cisco E-Mail Manager Option version 5.x and later
- Cisco ICM Enterprise Edition version 5.x and later

The information in this document was created from the devices in a specific lab environment. All of the devices used in this document started with a cleared (default) configuration. If your network is live, make sure that you understand the potential impact of any command.

### Conventions

Refer to the Cisco Technical Tips Conventions for more information on document conventions.

# Log In to the Administration Desk

Use these default login values to log in to the Administration Desk:

- Name = admin
- Password = Password

**Note:** The default login values are case sensitive.

Complete these steps to log in to the Administration Desk:

1. Type the name or IP address of the Cisco E-Mail Manager server and **:8088** in your browser Address field (see Figure 1).

**Note:** 8088 is the default port number.

**Figure 1 Server and Port Number**



2. Press **Enter** on your keyboard or click the browser **Go** button.

The Cisco E-Mail Manager Administration login window displays:

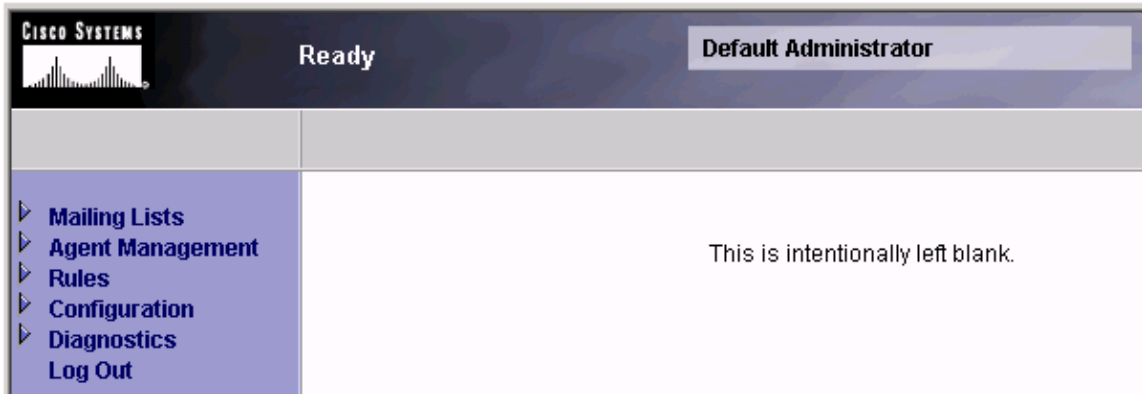
**Figure 2 Cisco E-Mail Manager Administration Login**



3. Type **admin** in the Login Name field, type **Password** in the Password field, and click **Log In**.

The Default Administrator window displays:

**Figure 3 Default Administrator**



## Log In to the Cisco E-Mail Manager Configuration

Use these default login values to log in to Cisco E-Mail Manager Configuration:

- Name = root
- Password = pass

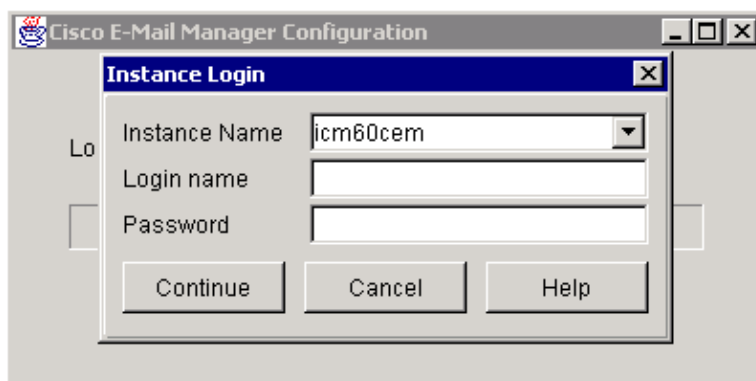
**Note:** The default login values are case sensitive.

Complete these steps to log in to Cisco E-Mail Manager Configuration:

1. Log in to the Cisco E-Mail Manager Server.
2. Select **Start > Programs > E-Mail Manager > Cisco E-Mail Manager Configuration** to run the Configuration Manager for the Cisco E-Mail Manager.

The Instance Login dialog box displays:

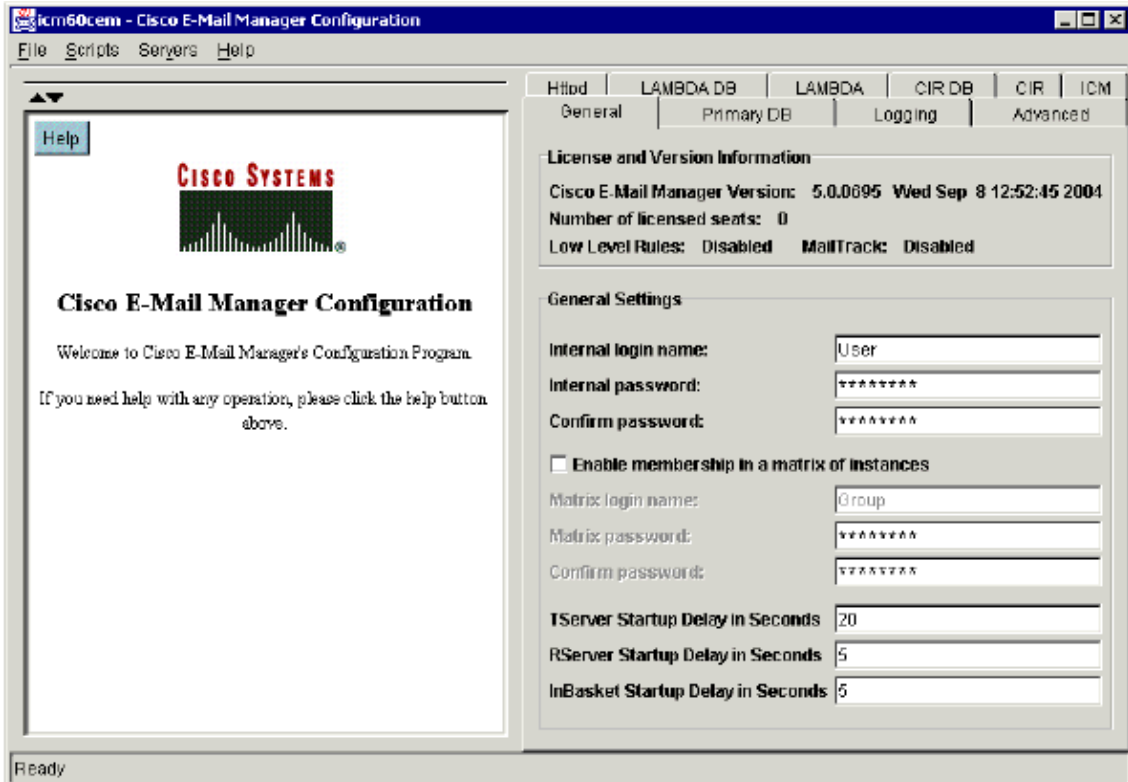
**Figure 4 Instance Login**



3. Type **root** in the Login Name field, type **pass** in the Password field, and click **Continue**

The Cisco E-Mail Manager Configuration window displays:

**Figure 5 Cisco E-Mail Manager Configuration**



## NetPro Discussion Forums – Featured Conversations

Networking Professionals Connection is a forum for networking professionals to share questions, suggestions, and information about networking solutions, products, and technologies. The featured links are some of the most recent conversations available in this technology.

NetPro Discussion Forums – Featured Conversations for Customer Contact Software

IP Communications and Video: Contact Center

## Related Information

- [Technical Support & Documentation – Cisco Systems](#)

All contents are Copyright © 2006–2007 Cisco Systems, Inc. All rights reserved. Important Notices and Privacy Statement.

Updated: Mar 31, 2006

Document ID: 63922