

# Conversion of a Point-to-Point (1+1) Configuration to a Two-Fiber BLSR

Document ID: 63654

---

**Introduction**

**Prerequisites**

Requirements

Components Used

Conventions

**Background Information**

**Convert Point-to-Point (1+1) to BLSR**

**NetPro Discussion Forums – Featured Conversations**

**Related Information**

---

## Introduction

This document describes the procedure to upgrade a point-to-point (1+1) configuration (with two nodes) to a two-fiber bidirection line switched ring (BLSR) in an ONS 15454 network.

## Prerequisites

### Requirements

Cisco recommends that you have knowledge of these topics:

- CISCO ONS 15454

### Components Used

The information in this document is based on these software and hardware versions:

- CISCO ONS 15454 version 4: All
- CISCO ONS 15454 version 3: 3.3.0 and later

The information in this document was created from the devices in a specific lab environment. All of the devices used in this document started with a cleared (default) configuration. If your network is live, make sure that you understand the potential impact of any command.

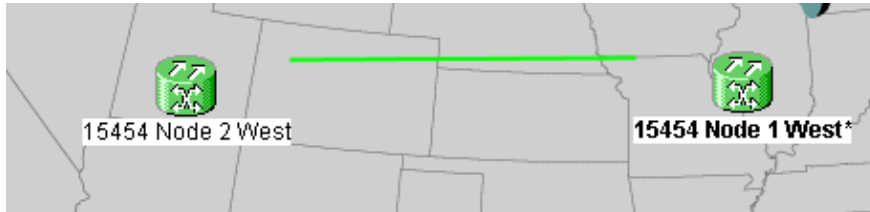
### Conventions

Refer to Cisco Technical Tips Conventions for more information on document conventions.

## Background Information

This document uses a lab setup with two nodes (Node1 and Node2) (see Figure 1).

**Figure 1 Topology**



The current setup is a point-to-point (1+1) configuration. The line capacity is OC-48. The working/active and protect/standby ports reside on slot 5 and slot 6 respectively (see Figure 2).

**Figure 2 Point-to-Point (1+1) Configuration**

Alarms	Conditions	History	Circuits	Provisioning	Inventory	Maintenance
Database		Protection Groups			Selected Group	
Ether Bridge		:  ds3			slot 6 (OC48), port 1, Protect/Standby, IS	
Protection		+  slot 6 (OC48), port 1			slot 5 (OC48), port 1, Working/Active, IS	
BLSR						
Software						

There are currently two circuits (see Figure 3).

**Figure 3 Two Circuits**

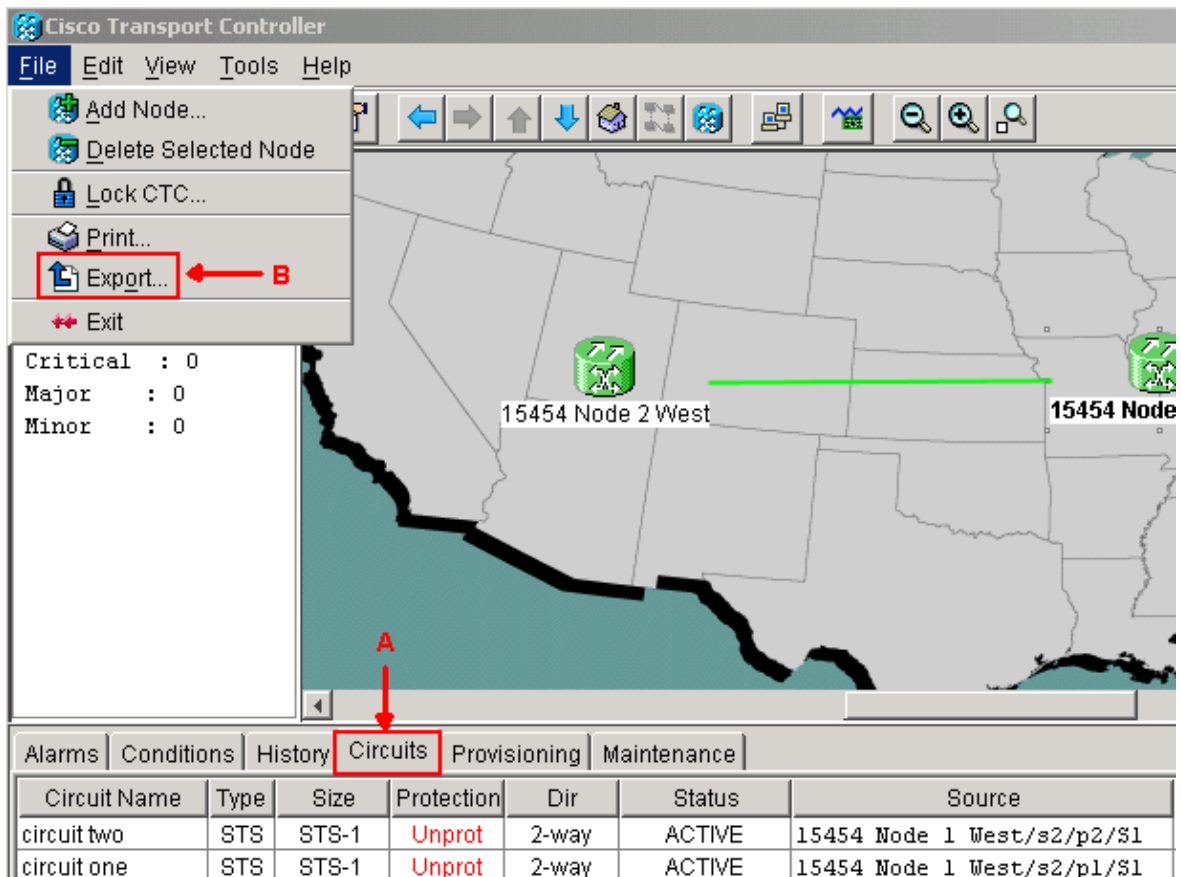
Alarms	Conditions	History	Circuits	Provisioning	Inventory	Maintenance	
Circuit Name	Type	Size	Protection	Dir	Status	Source	Destination
circuit one	STS	STS-1	1+1	2-way	ACTIVE	15454 Node 1 West/s2/p1/S1	15454 Node 2 West/s
circuit two	STS	STS-1	1+1	2-way	ACTIVE	15454 Node 1 West/s2/p2/S1	15454 Node 2 West/s

## Convert Point-to-Point (1+1) to BLSR

Complete these steps in order to convert a point-to-point (1+1) configuration to a two-fiber BLSR ring:

1. Log into one of the two nodes.
2. Check the **Alarms** and **Conditions** tabs to ensure that there are no active alarms or conditions for the network. Resolve any network-related alarms before you proceed.
3. Click the **Circuits** tab (see arrow A in Figure 4).

**Figure 4 Export CTC Data: Circuits**



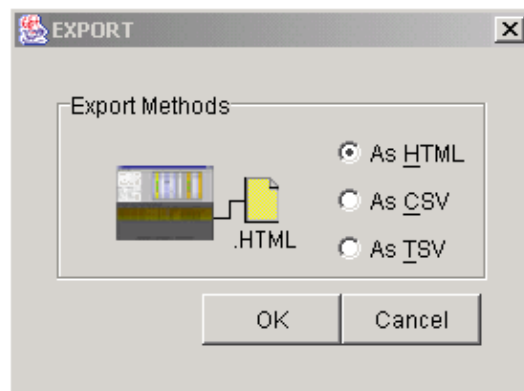
4. Export the CTC (circuits) data for reference, because you need to delete some circuits and create those circuits again later. Complete these steps:

a. Select **File > Export** (see arrow B in Figure 4).

b. Select a data format in the EXPORT dialog box (see Figure 5). You have three options:

- ◇ As HTML This option saves the data as a simple HTML table file without graphics. You can view or edit the file with applications such as Netscape Navigator, Microsoft Internet Explorer, or other applications that have the capability to open HTML files.
- ◇ As CSV This option saves the CTC table as comma-separated values (CSV).
- ◇ As TSV This option saves the CTC table as tab-separated values (TSV).

**Figure 5 EXPORT Dialog Box**

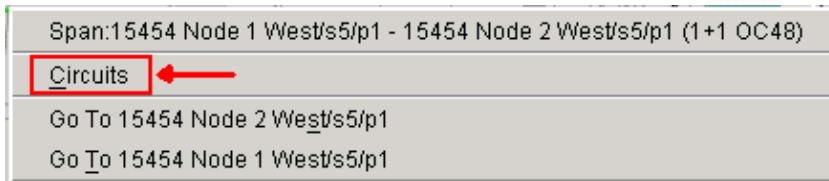


c. Navigate to a directory where you want to store the file.

d. Click **OK**.

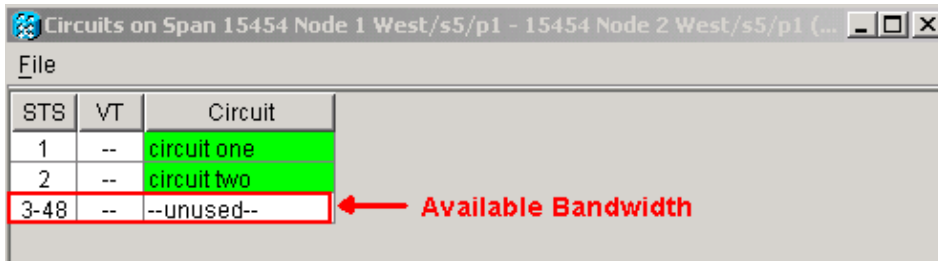
5. Right-click a span adjacent to the logged in node, and click **Circuits** from the shortcut menu (see Figure 6).

**Figure 6 Select Circuits from the Shortcut Menu**



The Circuits on Span window appears (see Figure 7).

**Figure 7 Circuits on Span**

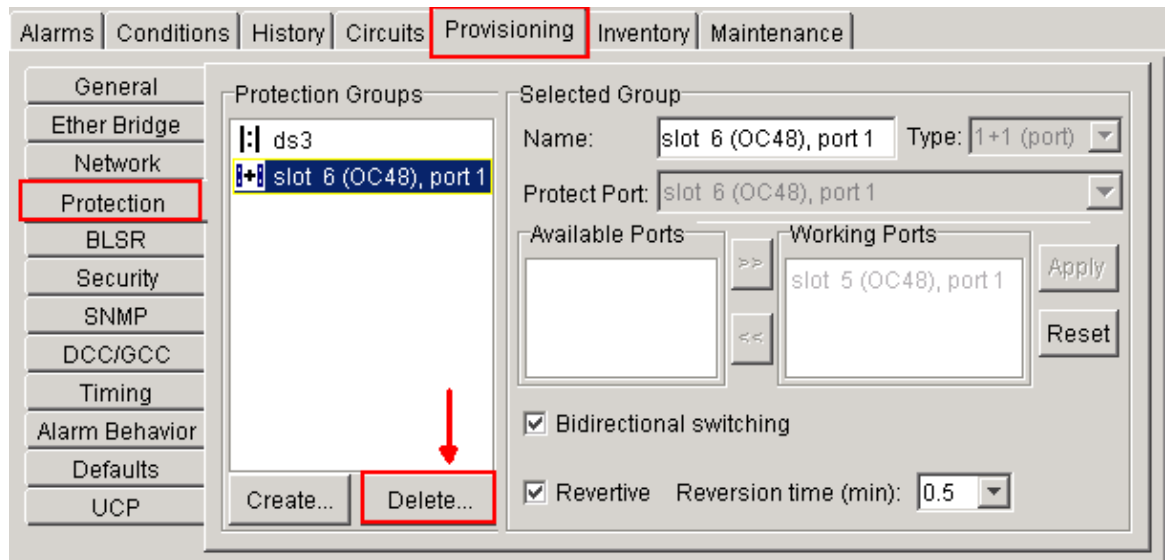


6. Ensure that the total number of active Synchronous Transport Signal (STS) circuits does not exceed 50 percent of the span bandwidth. Use the circuit list that you exported in Step 4 to note any circuits that fall into the upper 50 percent of bandwidth on the span. You need to delete these circuits and create them again later in the procedure.

In the Circuit column, a block titled **Unused** appears (see Figure 7). This number must exceed 50 percent of the span bandwidth. For an OC-48, you must not provision more than 24 STSs on the span. For an OC-12, you must not provision more than 6 STSs on the span.

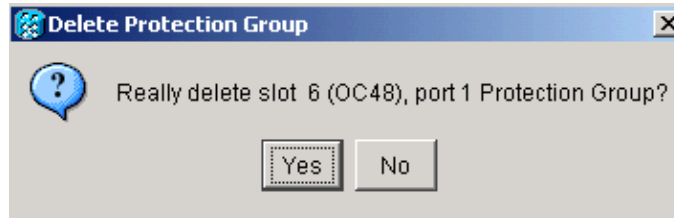
7. Repeat Steps 3 and 4 for each node involved in the point-to-point to BLSR conversion.
8. Ensure that the 1+1 working slot is active at both ends of the span that you want to convert to BLSR. Note down which slots work, and the protect port for reference in Step 12. Complete these steps:
  - a. Click **Maintenance > Protection** in the Node view.
  - b. Verify whether the working slot/port in the Selected Group pane appears as Working/Active under the Selected Group section (see Figure 2).
9. Delete a protection group at each node that supports the point-to-point span. Complete these steps:
  - a. Click the **Provisioning > Protection** tabs in the Node view.
  - b. Select the protection group you want to delete, and click **Delete** (see Figure 8).

**Figure 8 Delete a Protection Group**



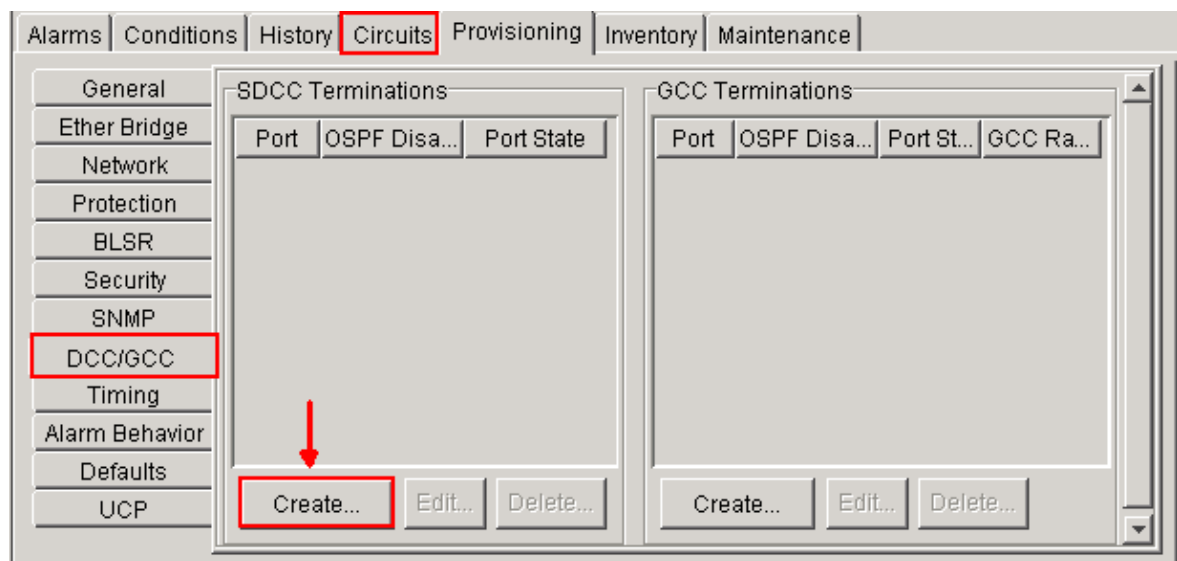
- c. Click **Yes** in the Delete Protection Group confirmation message box.

**Figure 9 Delete Protection Group**



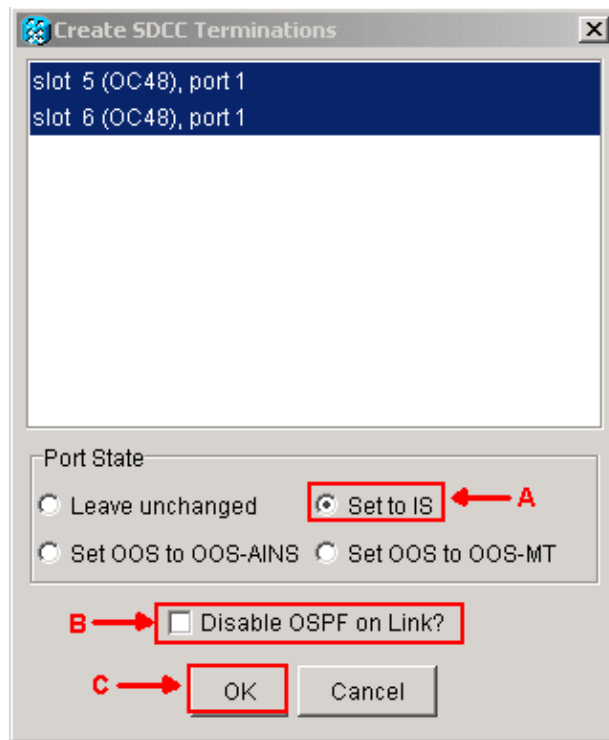
- d. Repeat Steps (a) through (d) to delete the protection group at each end of the span.
10. Verify the fiber from the protect port on one end node to the protect port on the other end node.
  11. Create SONET Data Communication Channel (SDCC) terminations on the previous Protect slots that you noted in Step 8. On both node 1 and node 2, execute this procedure:
    - a. Click **Circuits > DCC/GCC** in the Node view (see Figure 10).

**Figure 10 Create SDCC Terminations**



- b. Click **Create**. The Create SDCC Terminations dialog box appears (see Figure 11).

**Figure 11 Create SDCC Terminations Dialog Box**

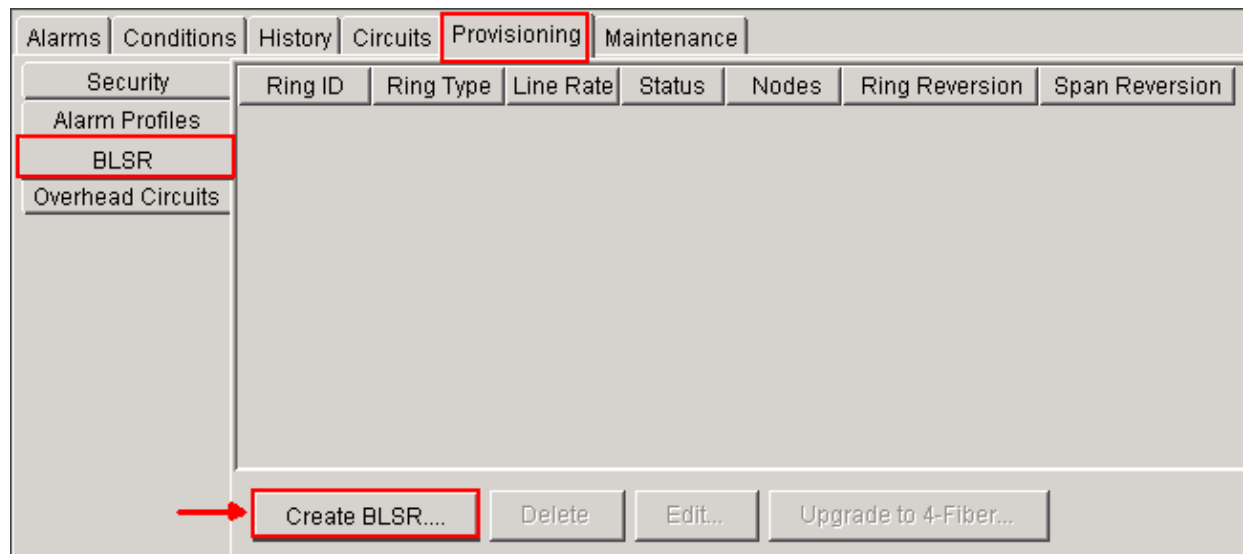


- c. Click the ports for SDCC termination. In order to select more than one port, press the SHIFT key or the CTRL key.
  - d. Click the **Set to IS** radio button in the Port State area (see arrow A in Figure 11).
  - e. Ensure that the **Disable OSPF on DCC Link** check box is not checked (see arrow B in Figure 11).
  - f. Click **OK** (see arrow C in Figure 11).
12. For circuits you provisioned on an STS that is now part of the protection bandwidth (STSs 7 to 12 for an OC12 BLSR, STSs 25 to 48 for an OC-48 BLSR, and STSs 97 to 192 for an OC-192 BLSR), delete each circuit. Refer to the notations on the circuit list from Step 6.

**Note:** Deletion of circuits can affect service.

13. Select **Provisioning > BLSR** in the network view, and click **Create BLSR** (see Figure 12).

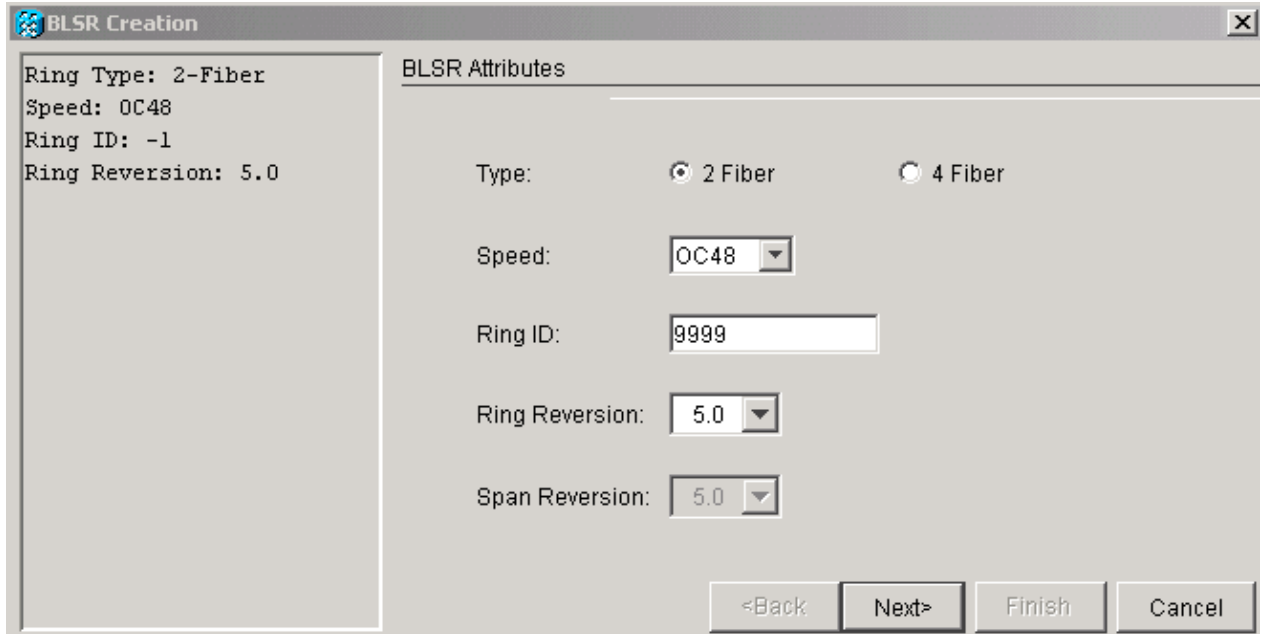
**Figure 12 BLSR Creation**



14. Set the BLSR properties in the BLSR Creation dialog box (see Figure 13).

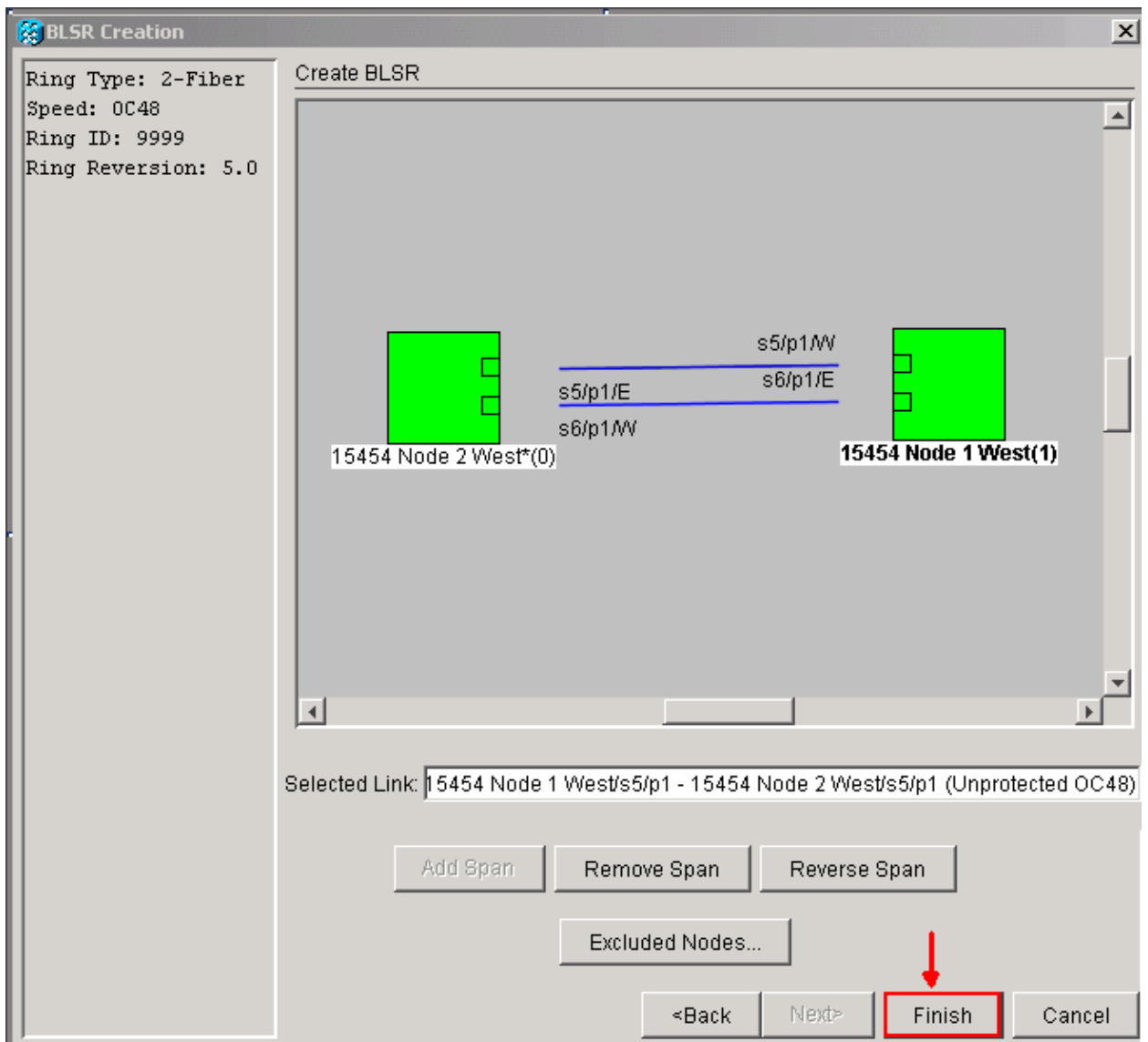
- ◆ **Ring Type:** Choose the BLSR ring type, either two-fiber or four-fiber.
- ◆ **Speed:** Choose the BLSR ring speed
- ◆ **Ring ID:** Assign a ring ID. The value must be between 0 and 9999.
- ◆ **Reversion time** (Ring Reversion or Span Reversion): Set the amount of time to pass before the traffic reverts to the original working path after a ring switch. The default value is 5 minutes.

**Figure 13 BLSR Attributes**



15. Click **Next**. The network graphic appears (see Figure 14).

**Figure 14 BLSR Topology**



16. Double-click a BLSR span line in the network graphic. If the span line is DCC connected to other BLSR cards that constitute a complete ring, the lines turn blue and the **Finish** button appears. If the lines do not form a complete ring, double-click span lines until a complete ring forms.
17. Click **Finish** to complete the two fiber BLSR creation. The BLSR appears (see Figure 15).

**Figure 15 Verification of 2 Fiber BLSR creation**

Alarms	Conditions	History	Circuits	Provisioning	Maintenance	
Security	Ring ID	Ring Type	Line Rate	Status	Nodes	Ring Reversion
Alarm Profiles	9999	2-Fiber	OC48	COMP...	15454 Node 2 West(0), 15454 Node 1 West(1)	5.0
<b>BLSR</b>						
Overhead Circuits						

18. Recreate the circuits that you deleted in step 12.
19. In the network view, click **Circuits**. Under the Protection column, both circuits show 2F-BLSR (see Figure 16). Before the conversion, both circuits show 1+1 (see Figure 3).

**Figure 16 Circuits**

Alarms	Conditions	History	Circuits	Provisioning	Maintenance		
Circuit Name	Type	Size	Protection	Dir	Status	Source	Destination
circuit two	STS	STS-1	2F-BLSR	2-way	ACTIVE	15454 Node 1 West/s2/p2/S1	15454 Node 2 West/s
circuit one	STS	STS-1	2F-BLSR	2-way	ACTIVE	15454 Node 1 West/s2/p1/S1	15454 Node 2 West/s

## NetPro Discussion Forums – Featured Conversations

Networking Professionals Connection is a forum for networking professionals to share questions, suggestions, and information about networking solutions, products, and technologies. The featured links are some of the most recent conversations available in this technology.

NetPro Discussion Forums – Featured Conversations for Optical
Service Providers: Optical Networking
Service Providers: Metro

## Related Information

- [Cisco ONS 15454 Procedure Guide](#)
- [Technical Support & Documentation – Cisco Systems](#)

[Contacts & Feedback](#) | [Help](#) | [Site Map](#)

© 2007 – 2008 Cisco Systems, Inc. All rights reserved. [Terms & Conditions](#) | [Privacy Statement](#) | [Cookie Policy](#) | [Trademarks of Cisco Systems, Inc.](#)

Updated: Sep 13, 2005

Document ID: 63654