

Table of Contents

<u>T3 Troubleshooting Flowchart</u>	1
<u>Document ID: 61241</u>	1
<u>Introduction</u>	1
<u>Prerequisites</u>	1
<u>Requirements</u>	1
<u>Components Used</u>	1
<u>Conventions</u>	1
<u>Flowchart</u>	1
<u>NetPro Discussion Forums – Featured Conversations</u>	2
<u>Related Information</u>	2

T3 Troubleshooting Flowchart

Document ID: 61241

Introduction

Prerequisites

Requirements

Components Used

Conventions

Flowchart

NetPro Discussion Forums – Featured Conversations

Related Information

Introduction

This document shows the flowchart for T3 troubleshooting.

Prerequisites

Requirements

There are no specific requirements for this document.

Components Used

This document is not restricted to specific software and hardware versions.

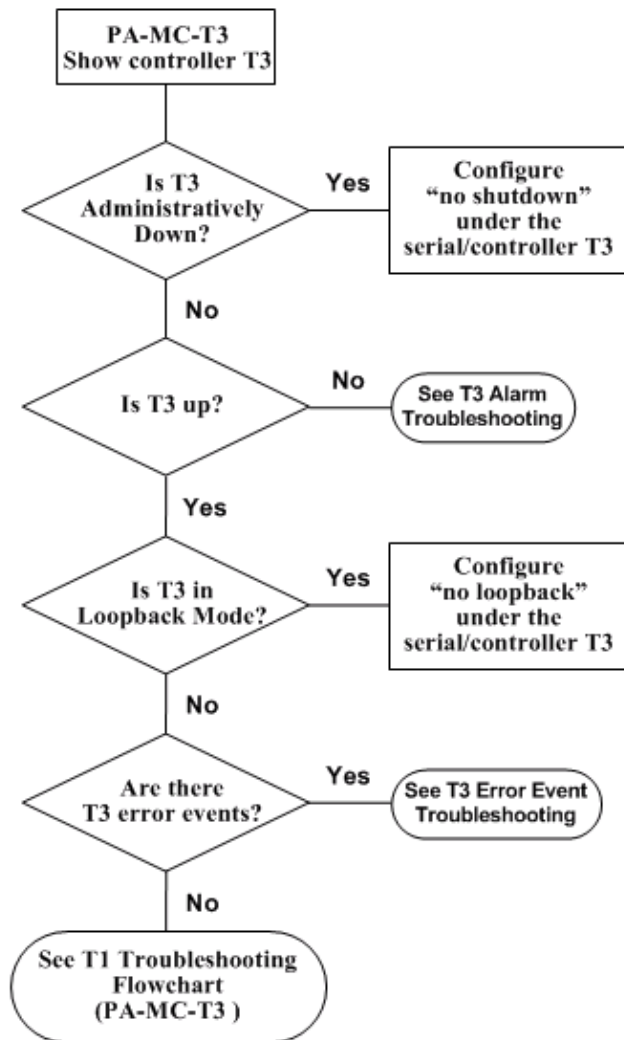
The information in this document was created from the devices in a specific lab environment. All of the devices used in this document started with a cleared (default) configuration. If your network is live, make sure that you understand the potential impact of any command.

Conventions

For more information on document conventions, refer to the Cisco Technical Tips Conventions.

Flowchart

To see more information, click the command boxes.



NetPro Discussion Forums – Featured Conversations

Networking Professionals Connection is a forum for networking professionals to share questions, suggestions, and information about networking solutions, products, and technologies. The featured links are some of the most recent conversations available in this technology.

NetPro Discussion Forums – Featured Conversations for Access
Network Infrastructure: Remote Access

Related Information

- [T3 Alarm Troubleshooting](#)
- [T3 Error Events Troubleshooting](#)
- [T1 Troubleshooting](#)
- [Technical Support – Cisco Systems](#)

All contents are Copyright © 1992–2005 Cisco Systems, Inc. All rights reserved. Important Notices and Privacy Statement.

