

PGW 2200 Softswitch – Check CDR File Creation

Document ID: 60109

Introduction

Prerequisites

Requirements

Components Used

Conventions

Check CDR Information on the Cisco PGW 2200

NetPro Discussion Forums – Featured Conversations

Related Information

Introduction

This document explains how to check the Call Detail Recording (CDR) file creation on the Cisco PGW 2200. With the Cisco PGW 2200 Release 9.2(2) and later, the CDR files are created as binary files. In this case, you need to have a Cisco Billing and Measurements Server (BAMS) that collects the binary files through FTP and processes them into a readable Bellcore AMA Format (BAF) file. This document explains how to check the binary files on the Cisco PGW 2200.

Prerequisites

Requirements

Readers of this document should have knowledge of these topics:

- Cisco Media Gateway Controller Software Release 9
- Cisco Billing and Measurements Server
- The "Configuring Call Detail Record File Output" section of Billing Interfaces

Components Used

The information in this document is based on the Cisco PGW 2200 Software Releases 9.3 and 9.4.

The information in this document was created from the devices in a specific lab environment. All of the devices used in this document started with a cleared (default) configuration. If your network is live, make sure that you understand the potential impact of any command.

Conventions

Refer to Cisco Technical Tips Conventions for more information on document conventions.

Check CDR Information on the Cisco PGW 2200

Use the TAC tool in order to use the CDR information for troubleshooting or validation. This tool also converts the bin format into the txt format by using the `/opt/Toolkit/bin/MGC_Toolkit` command, as shown in this example.

Note: This tool cannot be used for the creation of daily billing record details. This is because the

Protclsh83.bin job (located under the /opt/Toolkit/tcl/TclPro1.4/solaris-sparc/bin/ directory) uses a large percentage of CPU resources. The use of the MGC_Toolkit in a script can drive the Cisco PGW 2200 into congestion. If you want to convert the CDR binary files from the Cisco PGW 2200 for billing customers, use the Cisco BAMS application for this solution. The MGC_TOOLKIT is only part for troubleshooting scenario.

```
Connected to PGW2200A.cisco.com.  
Escape character is '^]'.  
  
SunOS 5.8
```

```
login: mgcusr  
Password:  
PGW2200A% cd /opt/Toolkit/bin/  
/opt/Toolkit/bin  
mgcusr@PGW2200A% MGC_Toolkit cdrconvert -input /opt/CiscoMGC/var/spool/cdr_20020904155525_
```

```
Reading the number 1 TLV record in filename:/opt/CiscoMGC/var/spool/cdr_20020904155525_008
```

```
message tag ID is :1090 (File_Header)  
message tag 1090 length is : 93  
tag ID is :4000 (Ver)  
tag 4000 length is :1  
Conversion Data Type: BE to IA5  
tag 4000 value is : 1  
tag ID is :4001 (Create_Tm)  
tag 4001 length is :4  
Conversion Data Type: BE to DT  
tag 4001 value is : Jan 10 2002 GMT 23:07:26  
tag ID is :4002 (Call_Ref_ID)  
tag 4002 length is :8  
Conversion Data Type: BE to HEX  
tag 4002 value is : 0X0000000000000000  
tag ID is :6001 (File_Start_Time)  
tag 6001 length is :4  
Conversion Data Type: BE to DT  
tag 6001 value is : Jan 10 2002 GMT 23:07:26
```

```
!--- Delete the other information, otherwise you will have four pages of information.  
!--- The tool's MGCC_Toolkit is built to check whether or not the bin files are corrupt.
```

You can also issue the **toolbar.sh cdr** command under the /opt/Toolkit/bin directory to receive the information through the GUI:

```
mgc-bru-20%toolbar.sh cdr
```

Note: If you want to access the Cisco PGW 2200 from a UNIX station, issue the **xhost + UNIX** command (for a description of this user command, issue the **man xhost** command) on your UNIX station. At the prompt, use the **mgcusr** username. It has its own environment settings for this application.

Also add the **DISPLAY** command on the Cisco PGW 2200, as shown in this example:

```
% telnet pgw2200A
```

```
Connected to PGW2200A.cisco.com.  
Escape character is '^]'.  
  
SunOS 5.8
```

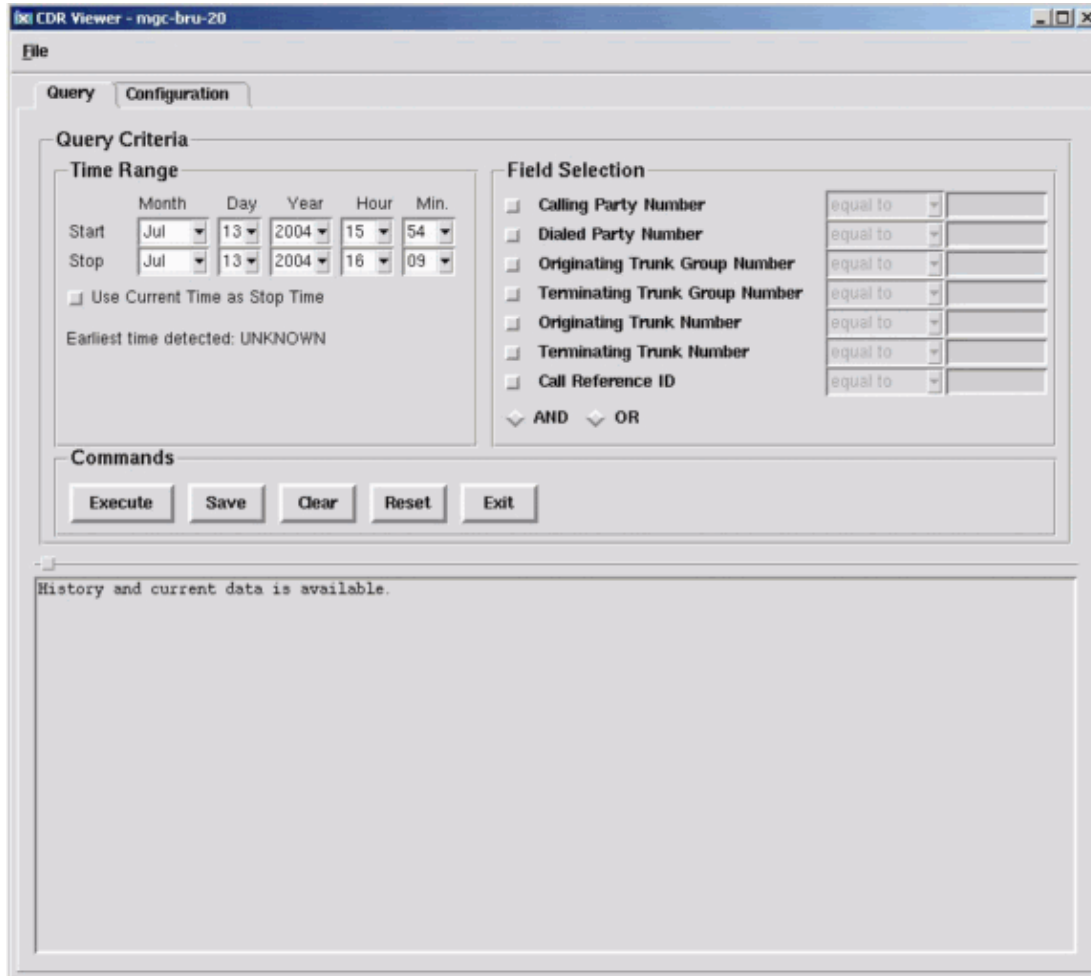
```
login: mgcusr  
Password:  
PGW2200A% cd /opt/Toolkit/bin/
```

```
mgcusr@PGW2200A% setenv DISPLAY workstation_name:0.0
```

```
!--- Replace "workstation_name" with the workstation  
!--- where you wish to display this application.
```

```
mgcusr@PGW2200A% toolbar.sh cdr
```

This is an example of the GUI provided by issuing the **toolbar.sh cdr** command:



NetPro Discussion Forums – Featured Conversations

Networking Professionals Connection is a forum for networking professionals to share questions, suggestions, and information about networking solutions, products, and technologies. The featured links are some of the most recent conversations available in this technology.

NetPro Discussion Forums – Featured Conversations for Voice
Service Providers: Voice over IP
Voice & Video: Voice over IP
Voice & Video: IP Telephony
Voice & Video: IP Phone Services for End Users
Voice & Video: Unified Communications
Voice & Video: IP Phone Services for Developers
Voice & Video: General

Related Information

- **Voice Technology Support**
 - **Voice and IP Communications Product Support**
 - **Recommended Reading: Troubleshooting Cisco IP Telephony**
 - **Technical Support & Documentation – Cisco Systems**
-

All contents are Copyright © 2006–2007 Cisco Systems, Inc. All rights reserved. Important Notices and Privacy Statement.

Updated: Feb 02, 2006

Document ID: 60109
