

VT Advantage Installer Indicates that the CPU does not Meet Minimum Requirements

Document ID: 50116

Introduction

Prerequisites

Requirements

Components Used

Conventions

Troubleshoot CPU Issues

Verifying the CPU Speed

Working Around the Problem

Related Information

Introduction

In the initial phase of the installation, the Cisco VT Advantage (VTA) application checks the speed of the PC's processor. Cisco VTA requires a 1GHz CPU that implements both MMX and SSE instructions. All Pentium IIIs support those instruction sets, but some slower AMD CPUs do not. If the application detects that the processor does not meet minimum requirements, it will abort the installation process.

Prerequisites

Requirements

There are no specific requirements for this document.

Components Used

The information in this document is based on these software and hardware versions:

- The CPU minimum requirement for installation of the Cisco VTA is a 1GHz CPU that implements both MMX and SSE instructions.
- Microsoft Windows 2000 or XP

The information in this document was created from the devices in a specific lab environment. All of the devices used in this document started with a cleared (default) configuration. If your network is live, make sure that you understand the potential impact of any command.

Conventions

For more information on document conventions, refer to the Cisco Technical Tips Conventions.

Troubleshoot CPU Issues

The situation may arise when the installer thinks you have a slower CPU than is actually the case. For example, notebook PCs frequently have software that throttles the CPU to lower speeds, particularly when running off batteries. When the install program does its check, a 1.3 GHz CPU might appear to be running at

900 MHz causing the installation to abort.

Verifying the CPU Speed

To verify what your PC's capabilities are, follow these steps:

1. Go to **My Computer** on your desktop, then right-click and select **System Properties**.
2. The lower right-hand portion of the dialog has one or more lines describing the processor (this includes its absolute speed rating if it is a Pentium P4), followed by a line giving the current CPU speed. This is followed by another line giving the amount of installed memory. Figure 1 provides an example of what you might see.

Figure 1



Working Around the Problem

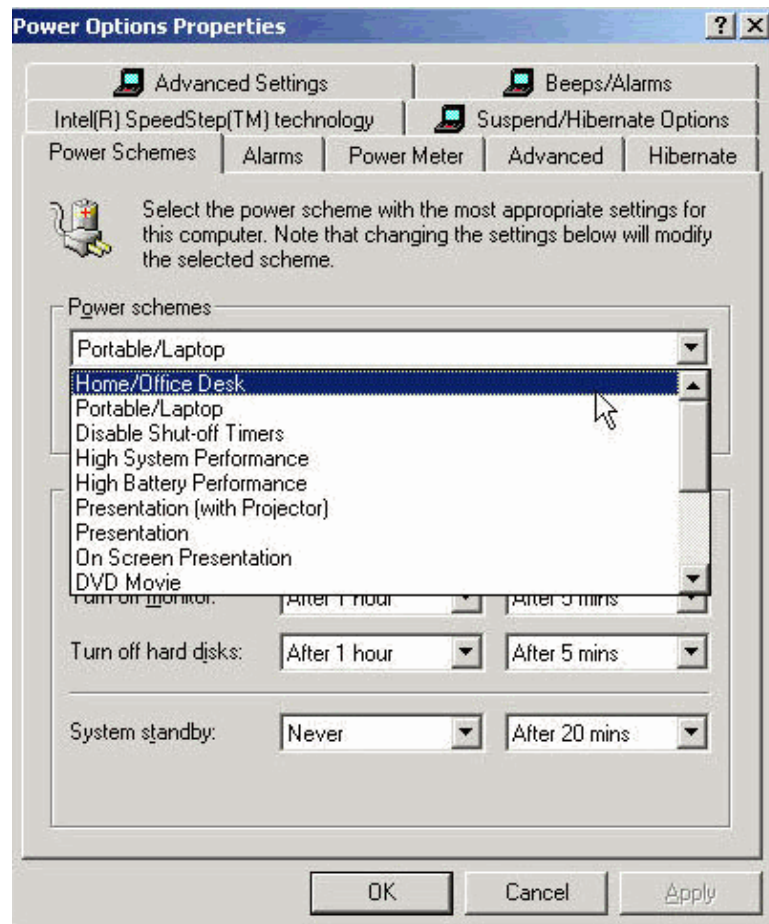
If you do find yourself in this situation, there are two possible ways of working around this problem:

- On most PCs, plugging the computer into an AC power source and ensuring that the current power scheme is Home/Office Desk disables the CPU throttling features, allowing the Cisco VTA to be installed.
- If this does not work, you need to change your power scheme settings. This is accomplished by performing these steps:

1. Go to **Start > Settings > Control Panel > Power Schemes**.

2. Select **Home/Office Desk**, and click **Apply**, as shown in Figure 2.

Figure 2



Once either of these options is used, you should be able to install the Cisco VTA successfully.

For more information, refer to Microsoft document [The Processor Speed May Be Reported Incorrectly in Windows XP](#).

Related Information

- [Voice Technology Support](#)
- [Voice and Unified Communications Product Support](#)
- [Recommended Reading: Troubleshooting Cisco IP Telephony](#)
- [Technical Support – Cisco Systems](#)

[Contacts & Feedback](#) | [Help](#) | [Site Map](#)

© 2009 – 2010 Cisco Systems, Inc. All rights reserved. [Terms & Conditions](#) | [Privacy Statement](#) | [Cookie Policy](#) | [Trademarks of Cisco Systems, Inc.](#)

Updated: Feb 03, 2006

Document ID: 50116
