

PGW 2200 Multiple Originating Point Codes Configuration Example

Document ID: 47722

Introduction

Prerequisites

Requirements

Components Used

Related Products

Conventions

Background Information

Configure

Network Diagram

Configurations

Verify

Troubleshoot

NetPro Discussion Forums – Featured Conversations

Related Information

Introduction

This document provides a sample configuration for the configuration of multiple Originating Point Codes (OPCs) on a Cisco PGW 2200 Softswitch.

Prerequisites

Requirements

Before you attempt this configuration, ensure that you meet these requirements:

- Cisco Media Gateway Controllers
- Cisco Signalling Link Terminals (SLT)
- SS7 Signalling

Components Used

The information in this document is based on these software and hardware versions:

- Cisco Media Gateway Controller – Cisco PGW 2200 Software Release 9.3(2)
- Cisco SLT on Cisco IOS[®] Software Release 12.2(15)T or later

The information in this document was created from the devices in a specific lab environment. All of the devices used in this document started with a cleared (default) configuration. If your network is live, make sure that you understand the potential impact of any command.

Related Products

This configuration can also be used with these hardware and software versions:

- Cisco PGW 2200 Release 9.2(2)
- Cisco PGW 2200 Release 9.4(1)

Conventions

For more information on document conventions, refer to Cisco Technical Tips Conventions.

Background Information

A Cisco PGW 2200 can support up to six True OPCs. However, there are some configuration steps you must follow in order to deploy this configuration. Each OPC is bound to a single SS7 Input Output Channel Controller (IOCC) instance within the PGW 2200 where each IOCC is bound to a unique UDP port. Each unique port is identified when you configure the SESSIONSET that is used by the C7IPLNK in the PGW 2200 configuration. One problem that arises when you configure multiple OPCs is that linksets cannot be shared between IOCCs. As a result, you need to configure multiple entries for your adjacent point codes (APCs) with unique MML names. This allows you to have a unique entry to associate with the LNKSET for each IOCC.

The Cisco SLT functions as an SS7 front-end processor for the Cisco PGW 2200 node. The Cisco SLT is responsible for terminating the Message Transfer Part Level 1 (MTP1) and MTP2 layers of the SS7 protocol stack. The Cisco SLT transports the upper layers of the SS7 signaling (MTP3 and later) to and from the PGW 2200 over an IP network that uses Reliable User Datagram Protocol (RUDP). Prior to Cisco IOS Software Release 12.2(15)T, the SLT was only capable of having a single Active RUDP session between itself and the PGW 2200. The result was that you had to have a different SLT for each IOCC or OPC configured. This limitation was removed with the introduction of Cisco IOS Software Release 12.2(15)T which can now have active RUDP sessions with up to four IOCC's (see Note).

Note: The Cisco 2611XM SLT can only create two RUDP sessions to a Cisco PGW 2200 as opposed to four on the 2651XM, AS5350, or AS5400.

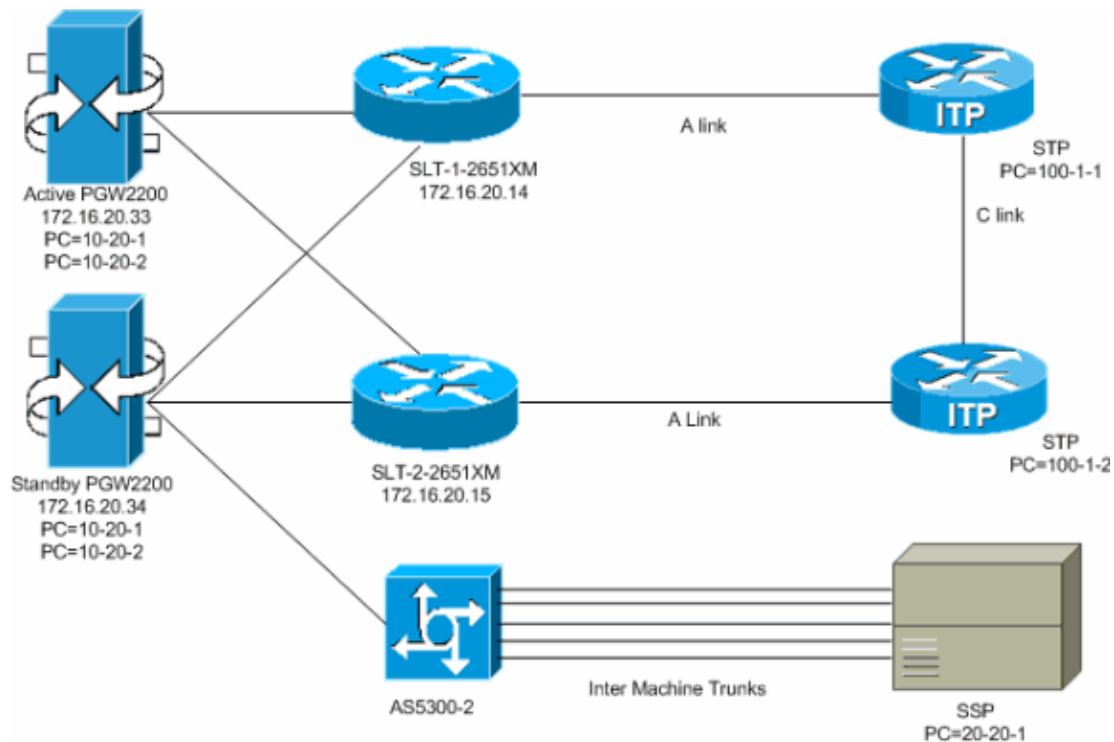
Configure

In this section, you are presented with the information to configure the features described in this document.

Note: To find additional information on the commands used in this document, use the Command Lookup Tool (registered customers only) .

Network Diagram

This document uses this network setup:



Configurations

This document uses these configurations:

- Active PGW 2200 (exported config.mml)
- SLT-1-2651XM (Cisco IOS)

Active PGW 2200 (exported config.mml)

```

!--- Two unique point codes are defined for the PGW 2200.

prov-add:OPC:NAME="opc-1",DESC="Originating Point Code 1",
NETADDR="10.20.1",NETIND=2,TYPE="TRUEOPC"
prov-add:OPC:NAME="opc-2",
DESC="Originating Point Code 2",NETADDR="10.20.2",NETIND=2,TYPE="TRUEOPC"

!--- Destination point codes are defined for the SSPs
!--- that you connect to. For point code 20.20.1 there are duplicate entries.
!--- Each one is associated to a different IOCC that represents each OPC.

prov-add:DPC:NAME="dpc-simplex",DESC="Destination Point Code for BTS Simplex(650)",
NETADDR="20.20.1",NETIND=2
prov-add:DPC:NAME="dpc-simplex-opc2",DESC="Destination Point Code for BTS
Simplex(650)from opc2",NETADDR="20.20.1",NETIND=2

!--- The SS7 variant is defined that is used between you and
!--- the destination SSP.

prov-add:SS7PATH:NAME="ss7p-simplex",DESC="SS7 Signaling Service to
BTS Simplex via opc-1",MDO="ANSISS7_STANDARD",CUSTGRPID="0000",SIDE="network",

```

```
DPC="dpc-simplex",OPC="opc-1"
prov-add:SS7PATH:NAME="ss7p-simplex-opc2",
DESC="SS7 Signaling Service to BTS Simplex via opc-2",MDO="ANSISS7_STANDARD",
CUSTGRPID="0000",SIDE="network",DPC="dpc-simplex-opc2",OPC="opc-2"
```

```
!--- The SLTs are defined and gateways that are part of
!--- the PGW 2200 solution.
```

```
prov-add:EXTNODE:NAME="slt-1",DESC="SLT-1-2651XM",TYPE="SLT"
prov-add:EXTNODE:NAME="slt-2",DESC="SLT-2-2651XM",TYPE="SLT"prov-add:EXTNODE:
NAME="as5300-2",DESC="AS5300-2 Gateway",TYPE="AS5300"
```

```
!--- The RUDP connections are defined between
!--- the PGW 2200 and the two SLTs.
!--- Note that you need to define duplicate entries for the sessionset.
!--- Each one is associated to a different IOCC that represents each OPC.
```

```
prov-add:SESSIONSET:NAME="sset-slt1",EXTNODE="slt-1",IPADDR1="IP_Addr1",
PEERADDR1="172.16.20.14",PORT=7000,PEERPORT=7000,NEXTHOP1="0.0.0.0",
NETMASK1="255.255.255.255",TYPE="BSMV0"
prov-add:SESSIONSET:NAME="sset-slt1-opc2",EXTNODE="slt-1",IPADDR1=
"IP_Addr1",PEERADDR1="172.16.20.14",PORT=7002,PEERPORT=7002,NEXTHOP1=
"0.0.0.0",NETMASK1="255.255.255.255",TYPE="BSMV0"
prov-add:SESSIONSET:NAME="sset-slt2",EXTNODE="slt-2",IPADDR1="IP_Addr1",
PEERADDR1="172.16.20.15",PORT=7000,PEERPORT=7000,NEXTHOP1="0.0.0.0",
NETMASK1="255.255.255.255",TYPE="BSMV0"
prov-add:SESSIONSET:NAME="sset-slt2-opc2",EXTNODE="slt-2",IPADDR1=
"IP_Addr1",PEERADDR1="172.16.20.15",PORT=7002,PEERPORT=7002,NEXTHOP1=
"0.0.0.0",NETMASK1="255.255.255.255",TYPE="BSMV0"
```

```
!--- The point codes of the STPs are defined that you connect to.
!--- Note that you need to define duplicate entries for the APCs.
!--- Each one is associated to a different IOCC that represents each OPC.
```

```
prov-add:APC:NAME="itp-1",DESC="Adjacent Point Code for ITP1(100-1-1)
",NETADDR="100.1.1",NETIND=2
prov-add:APC:NAME="itp-2",DESC="Adjacent Point Code for ITP2 (100-1-2)
",NETADDR="100.1.2",NETIND=2
prov-add:APC:NAME="itp-1-opc2",DESC="Adjacent Point Code for ITP1 (100-1-1)
for opc-2",NETADDR="100.1.1",NETIND=2
prov-add:APC:NAME="itp-2-opc2",DESC="Adjacent Point Code for ITP2 (100-1-2)
for opc-2",NETADDR="100.1.2",NETIND=2
```

```
!--- Define the SS7 links between the PGW 2200 and the STP.
!--- You need to define duplicate entries for the LNKSET.
!--- Each duplicate entry is associated to a different IOCC that
!--- represents each OPC.
```

```
prov-add:LNKSET:NAME="lnkset-itp1",DESC="From 2651XM-1 Lnkset to ITP1
",APC="itp-1",PROTO="SS7-ANSI",TYPE="IP"
prov-add:LNKSET:NAME="lnkset-itp2
",DESC="From 2651XM-1 Lnkset to ITP2",APC="itp-2",PROTO="SS7-ANSI",TYPE=
"IP"
prov-add:LNKSET:NAME="lnkset-itp1-opc2",DESC="From 2651XM-1 Lnkset to
ITP1 for opc-2",APC="itp-1-opc2",PROTO="SS7-ANSI",TYPE="IP"
prov-add:
LNKSET:NAME="lnkset-itp2-opc2",DESC="From 2651XM-1 Lnkset to ITP2 for
opc-2",APC="itp-2-opc2",PROTO="SS7-ANSI",TYPE="IP"
```

```
!--- Define routes to the destination point code via each SLT.
!--- Also, define the routes to the STPs. You need to
!--- define duplicate entries for the SS7ROUTE.
!--- Each duplicate entry is associated to a different
!--- IOCC that represents each OPC.
```

```
prov-add:SS7ROUTE:NAME="ss7r-simplex-1",DESC="SS7 Route to BTS Simplex
via ITP1",OPC="opc-1",DPC="dpc-simplex",LNKSET="lnkset-itp1", PRI=1
prov-add:SS7ROUTE:NAME="ss7r-simplex-2",DESC="SS7 Route to BTS Simplex
via ITP2",OPC="opc-1",DPC="dpc-simplex",LNKSET="lnkset-itp2", PRI=1
prov-add:SS7ROUTE:NAME="ss7r-simplex-1-opc2",DESC="SS7 Route to BTS
Simplex via ITP1 using opc-2",OPC="opc-2",DPC="dpc-simplex-opc2",
LNKSET="lnkset-itp1-opc2",PRI=1
prov-add:SS7ROUTE:NAME="ss7r-simplex-2-opc2",DESC="SS7 Route to
BTS Simplex via ITP2 using opc-2",OPC="opc-2",DPC="dpc-simplex-opc2
",LNKSET="lnkset-itp2-opc2",PRI=1
prov-add:SS7ROUTE:NAME="ss7r-itp1-opc2",DESC="SS7 Route to ITP1
via opc-2",OPC="opc-2",DPC="itp-1-opc2",LNKSET="lnkset-itp1-opc2",PR I=1
prov-add:SS7ROUTE:NAME="ss7r-itp2-opc2",DESC="SS7 Route to ITP2 via
opc-2",OPC="opc-2",DPC="itp-2-opc2",LNKSET="lnkset-itp2-opc2",PR I=1
prov-add:SS7ROUTE:NAME="ss7r-itp1",DESC="SS7 Route to ITP1 via opc-1
",OPC="opc-1",DPC="itp-1",LNKSET="lnkset-itp1",PRI=1
prov-add:SS7ROUTE:NAME="ss7r-itp2",DESC="SS7 Route to ITP2 via opc-1
",OPC="opc-1",DPC="itp-2",LNKSET="lnkset-itp2",PRI=1
```

```
!--- Define the IP link between the PGW 2200 and the SLT.
!--- You need to create duplicate entries for the C7IPLNK.
!--- Each duplicate entry is associated to a different
!--- IOCC that represents each OPC.
```

```
prov-add:C7IPLNK:NAME="c7ip-itp1-0",DESC="C7Iplink to ITP1 SLC 0 via
SLT1",LNKSET="lnkset-itp1",SLC=0,PRI=1,TIMESLOT=0,SESSIONSET="s set-slt1"
prov-add:C7IPLNK:NAME="c7ip-itp2-1",DESC="C7Iplink to ITP2 SLC 1 via
SLT2",LNKSET="lnkset-itp2",SLC=1,PRI=1,TIMESLOT=1,SESSIONSET=" sset-slt2"
prov-add:C7IPLNK:NAME="c7ip-itp1-1-opc2",DESC="C7Iplink to ITP1 SLC 1
via SLT-2 for opc-2",LNKSET="lnkset-itp1-opc2",SLC=1,PRI=1,TIMESLOT=0,
SESSIONSET="sset-slt2-opc2"
prov-add:C7IPLNK:NAME="c7ip-itp2-0-opc2",DESC="C7Iplink to ITP2 SLC 0
via SLT-1 for opc-2",LNKSET="lnkset-itp2-opc2",SLC=0,PRI=1,TIMESLOT=1,
SESSIONSET="sset-slt1-opc2"
```

```
!--- Define the SS7 Subsystems which allow you to route
!--- traffic via the C links. Note that you need to create duplicate
!--- entries for the SS7SUBSYS. Each duplicate entry is
!--- associated to a different IOCC that representis each OPC.
```

```
prov-add:SS7SUBSYS:NAME="subsys-itp1-itp2",DESC="notSet",SVC="itp-1",
PRI=2,MATEDAPC="itp-2",SSN=0,PROTO="SS7-ANSI",STPSCPIND=0,TRANSPROTO="SCCP"
prov-add:SS7SUBSYS:NAME="subsys-itp2-itp1",DESC="notSet",SVC="itp-2",
PRI=2,MATEDAPC="itp-1",SSN=0,PROTO="SS7-ANSI",STPSCPIND=0,TRANSPROTO="SCCP"
prov-add:SS7SUBSYS:NAME="subsys-itp1-itp2-2",DESC="notSet",SVC="itp-1-opc2",
PRI=2,MATEDAPC="itp-2-opc2",SSN=0,PROTO="SS7-ANSI",STPSCPIND=0,TRANSPROTO="SCCP"
prov-add:SS7SUBSYS:NAME="subsys-itp2-itp1-2",DESC="notSet",SVC="itp-2-opc2",
PRI=2,MATEDAPC="itp-1-opc2",SSN=0,PROTO="SS7-ANSI",STPSCPIND=0,TRANSPROTO="SCCP"
```

SLT-1-2651XM (Cisco IOS)

```
SLT-1-2651XM#show running-config
```

```

.
.
.
service timestamps debug datetime msec
service timestamps log datetime msec
!
hostname SLT-1-2651XM
!
!
memory-size iomem 40
clock timezone PST -8
clock summer-time PDT recurring
ip subnet-zero
!
!
no ip domain lookup
!
!
!
!
controller T1 0/0
 framing esf
 clock source internal
 linecode b8zs
 channel-group 0 timeslots 1 speed 64
 description *** Connected to STP-1 ***
!
controller T1 0/1
 framing esf
 clock source line primary
 linecode b8zs
 cablelength short 133
 channel-group 0 timeslots 1 speed 64
 description *** Connected to STP-2 ***
!
!
interface FastEthernet0/0
 ip address 172.16.20.14 255.255.255.192
 duplex auto
 speed auto
!
interface Serial0/0:0
 no ip address
!
interface Serial0/1:0
 no ip address
 session-set 1
!
ip http server
ip classless
ip route 0.0.0.0 0.0.0.0 172.16.20.1
!
!
!

!--- ss7 session 0 and 1 represent the RUDP connections for OPC1.
!--- ss7 session 4 and 5 represent the RUDP connections for OPC2.

ss7 session 0 address 172.16.20.34 7000 172.16.20.14 7000 session-set 0
ss7 session 1 address 172.16.20.33 7000 172.16.20.14 7000 session-set 0
ss7 session 4 address 172.16.20.34 7002 172.16.20.14 7002 session-set 1
ss7 session 5 address 172.16.20.33 7002 172.16.20.14 7002 session-set 1
.
.

```

```
.  
!  
end
```

Verify

From the PGW 2200, verify that all SS7 links are up and in service. This output represents some commands that you can run on the PGW 2200 that provide the status of various components of the configuration.

```
mml> rtrv-ne  
MGC-01 - Media Gateway Controller 2004-03-28 09:03:20.620 PST  
M RTRV  
"Type:MGC"  
"Hardware platform:sun4u sparcsun4u,SUNW,Ultra-60"  
"Vendor:"Cisco Systems, Inc.""  
"Location:MGC-01 - Media Gateway Controller"  
"Version:"9.3(2)"  
"Platform State:ACTIVE"  
;  
  
mml> rtrv-dest:all  
MGC-01 - Media Gateway Controller 2004-03-28 09:19:47.570 PST  
M RTRV  
"ss7p-simplex:PKG=SS7-ANSI,ASSOC=UNK,PST=IS,SST=RSTO"  
"ss7p-simplex-opc2:PKG=SS7-ANSI,ASSOC=signas-3-opc2,PST=IS,SST=RSTO"  
;  
  
mml> rtrv-c7lnk:all  
MGC-01 - Media Gateway Controller 2004-03-28 09:21:53.970 PST  
M RTRV  
"c7ip-itp1-0:lnkset-itp1,LID=0:IS"  
"c7ip-itp2-1:lnkset-itp2,LID=1:IS"  
"c7ip-itp1-1-opc2:lnkset-itp1-opc2,LID=1:IS"  
"c7ip-itp2-0-opc2:lnkset-itp2-opc2,LID=0:IS"  
  
mml> rtrv-rte:all  
MGC-01 - Media Gateway Controller 2004-03-28 09:29:55.370 PST  
M RTRV  
"dpc-simplex:lnkset-itp1:APC=itp-1,OPC=opc-1,PRIO=1,PST=IS,SST=NA"  
"dpc-simplex:lnkset-itp2:APC=itp-2,OPC=opc-1,PRIO=1,PST=IS,SST=NA"  
"dpc-simplex-opc2:lnkset-itp1-opc2:APC=itp-1-opc2,OPC=opc-2,PRIO=1,PST=IS,SST=NA"  
"dpc-simplex-opc2:lnkset-itp2-opc2:APC=itp-2-opc2,OPC=opc-2,PRIO=1,PST=IS,SST=NA"  
"itp-1:lnkset-itp1:APC=itp-1,OPC=opc-1,PRIO=1,PST=IS,SST=NA"  
"itp-2:lnkset-itp2:APC=itp-2,OPC=opc-1,PRIO=1,PST=IS,SST=NA"  
"itp-1-opc2:lnkset-itp1-opc2:APC=itp-1-opc2,OPC=opc-2,PRIO=1,PST=IS,SST=NA"  
"itp-2-opc2:lnkset-itp2-opc2:APC=itp-2-opc2,OPC=opc-2,PRIO=1,PST=IS,SST=NA"  
;
```

Troubleshoot

There is currently no specific troubleshooting information available for this configuration.

NetPro Discussion Forums – Featured Conversations

Networking Professionals Connection is a forum for networking professionals to share questions, suggestions, and information about networking solutions, products, and technologies. The featured links are some of the most recent conversations available in this technology.

NetPro Discussion Forums – Featured Conversations for Voice

Service Providers: Voice over IP

Voice & Video: Voice over IP

Voice & Video: IP Telephony

Voice & Video: IP Phone Services for End Users

Voice & Video: Unified Communications

Voice & Video: IP Phone Services for Developers

Voice & Video: General

Related Information

- **Cisco Media Gateway Controller Software Release 9 Documentation**
- **Multiple OPC Support for Cisco Signalling Link Terminal (SLT)**
- **Voice Technology Support**
- **Voice and Unified Communications Product Support**
- **Recommended Reading: Troubleshooting Cisco IP Telephony Cisco Press, ISBN 1587050757**
- **Technical Support – Cisco Systems**

[Contacts & Feedback](#) | [Help](#) | [Site Map](#)

© 2008 – 2009 Cisco Systems, Inc. All rights reserved. [Terms & Conditions](#) | [Privacy Statement](#) | [Cookie Policy](#) | [Trademarks of Cisco Systems, Inc.](#)

Updated: Feb 02, 2006

Document ID: 47722
