

# Configuring an IPsec Router Dynamic LAN-to-LAN Peer and VPN Clients

Document ID: 46242

---

## Introduction

### Prerequisites

- Requirements
- Components Used
- Conventions

### Configure

- Network Diagram
- Configurations
- VPN Client

### Verify

- Verify Crypto Map Sequence Numbers

### Troubleshoot

### NetPro Discussion Forums – Featured Conversations

### Related Information

---

## Introduction

This configuration shows a LAN-to-LAN configuration between two routers in a hub-spoke environment. Cisco VPN Clients also connect to the hub and use Extended Authentication (Xauth).

The spoke router in this scenario obtains its IP address dynamically via DHCP. The use of Dynamic Host Configuration Protocol (DHCP) is common in situations where the spoke is connected to the Internet via a DSL or cable modem. This is because the ISP often provisions IP addresses dynamically using DHCP on these low-cost connections.

Without further configuration, the use of a wild-card pre-shared key on the hub router is not possible in this situation. This is because Xauth for the VPN Client connections do break the LAN-to-LAN connection. However, when you disable Xauth, it reduces the ability to authenticate VPN Clients.

The introduction of ISAKMP profiles in Cisco IOS® Software Release 12.2(15)T makes this configuration possible since you can match on other properties of the connection (VPN Client group, peer IP address, fully qualified domain name [FQDN], and so forth) rather than just the peer IP address. ISAKMP profiles are the subject of this configuration.

**Note:** You can also use the **no-xauth** keyword with the **crypto isakmp key** command to bypass Xauth for LAN-to-LAN peers. Refer to Ability to Disable Xauth for Static IPsec Peers and Configuring IPsec Between Two Routers and a Cisco VPN Client 4.x for more information.

The spoke router configuration in this document can be replicated on all other spoke routers that connect into the same hub. The only difference between spokes is the access-list that references the traffic to be encrypted.

Refer to EzVPN Client and Server on the Same Router Configuration Example in order to learn more about the scenario where you can configure a router as an EzVPN Client and server on the same interface.

Refer to LAN-to-LAN Tunnels on a VPN 3000 Concentrator With a PIX Firewall Configured for DHCP to configure the Cisco VPN 3000 Concentrator Series to create IPsec tunnels dynamically with remote Cisco

PIX Firewalls that use DHCP to get IP addresses on their public interfaces.

Refer to IPsec LAN-to-LAN Tunnel on a VPN 3000 Concentrator with a Cisco IOS Router Configured for DHCP Configuration Example to configure the VPN 3000 Concentrator Series in order to create IPsec tunnels dynamically with remote VPN devices that receive dynamic IP addresses on their public interfaces.

Refer to IPsec Between a Static IOS Router and a Dynamic PIX/ASA 7.x with NAT Configuration Example in order to enable the PIX/ASA Security Appliance to accept dynamic IPsec connections from the IOS® router.

## Prerequisites

## Requirements

There are no specific requirements for this document.

## Components Used

IPsec profiles were introduced in Cisco IOS Software Release 12.2(15)T. Due to Cisco bug ID CSCea77140 (registered customers only) you need to run Cisco IOS Software Release 12.3(3) or later, or Cisco IOS Software Release 12.3(2)T or later in order for this configuration to work successfully. These configurations were tested using these software versions:

- Cisco IOS Software Release 12.3(6a) on the hub router
- Cisco IOS Software Release 12.2(23a) on the spoke router (this can be any crypto version)
- Cisco VPN Client Version 4.0(4) on Windows 2000

The information in this document was created from the devices in a specific lab environment. All of the devices used in this document started with a cleared (default) configuration. If your network is live, make sure that you understand the potential impact of any command.

## Conventions

Refer to Cisco Technical Tips Conventions for more information on document conventions.

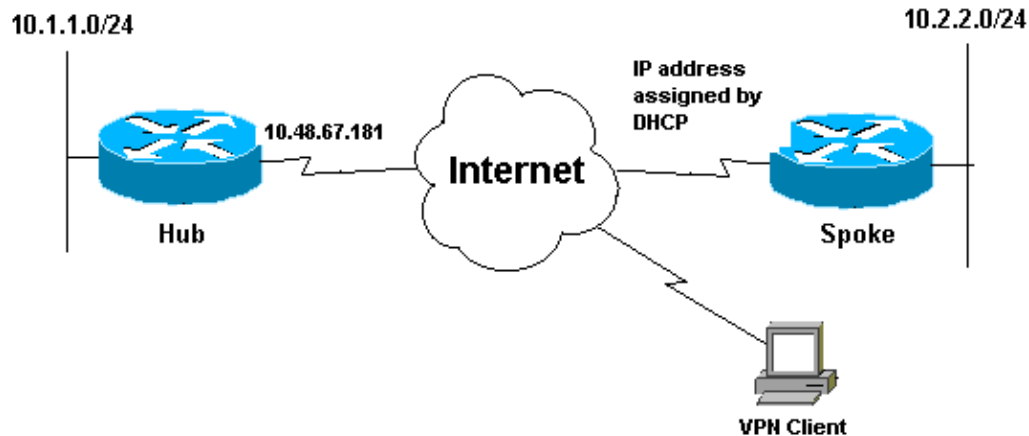
## Configure

In this section, you are presented with the information to configure the features described in this document.

**Note:** Use the Command Lookup Tool (registered customers only) to find more information on the commands used in this document.

## Network Diagram

This document uses the network setup shown in this diagram.



## Configurations

This document uses this network setup:

- Hub Configuration
- Spoke Configuration

### Hub Configuration

```

version 12.3
service timestamps debug datetime msec
service timestamps log datetime msec
service password-encryption
!
hostname Hub
!
no logging on
!
username gfullage password 7 0201024E070A0E2649
aaa new-model
!
!
aaa authentication login clientauth local
aaa authorization network groupauthor local
aaa session-id common
ip subnet-zero
!
!
no ip domain lookup
!
!

!--- Keyring that defines wildcard pre-shared key.

crypto keyring spokes
  pre-shared-key address 0.0.0.0 0.0.0.0 key cisco123
!
crypto isakmp policy 10
  encr 3des
  authentication pre-share
  group 2
!

!--- VPN Client configuration for group "testgroup"
!--- (this name is configured in the VPN Client).

```

```

crypto isakmp client configuration group testgroup
  key cisco321
  dns 1.1.1.1 2.2.2.2
  wins 3.3.3.3 4.4.4.4
  domain cisco.com
  pool ippool
!

!--- Profile for LAN-to-LAN connection, that references
!--- the wildcard pre-shared key and a wildcard
!--- identity (this is what is broken in
!--- Cisco bug ID CSCea77140) and no Xauth.

crypto isakmp profile L2L
  description LAN-to-LAN for spoke router(s) connection
  keyring spokes
  match identity address 0.0.0.0

!--- Profile for VPN Client connections, that matches
!--- the "testgroup" group and defines the Xauth properties.

crypto isakmp profile VPNclient
  description VPN clients profile
  match identity group testgroup
  client authentication list clientauth
  isakmp authorization list groupauthor
  client configuration address respond
!
!
crypto ipsec transform-set myset esp-3des esp-sha-hmac
!

!--- Two instances of the dynamic crypto map
!--- reference the two previous IPsec profiles.

crypto dynamic-map dynmap 5
  set transform-set myset
  set isakmp-profile VPNclient
crypto dynamic-map dynmap 10
  set transform-set myset
  set isakmp-profile L2L
!
!

!--- Crypto-map only references the two
!--- instances of the previous dynamic crypto map.

crypto map mymap 10 ipsec-isakmp dynamic dynmap
!
!
!
interface FastEthernet0/0
  description Outside interface
  ip address 10.48.67.181 255.255.255.224
  no ip mroute-cache
  duplex auto
  speed auto
  crypto map mymap
!
interface FastEthernet0/1
  description Inside interface
  ip address 10.1.1.1 255.255.254.0

duplex auto
speed auto
no keepalive

```

```

!
ip local pool ippool 10.5.5.1 10.5.5.254
no ip http server
no ip http secure-server
ip classless
ip route 0.0.0.0 0.0.0.0 10.48.66.181

!
!
call rsvp-sync
!
!
dial-peer cor custom
!
!
line con 0
  exec-timeout 0 0
  escape-character 27
line aux 0
line vty 0 4
  password 7 121A0C041104
!
!
end

```

### Spoke Configuration

```

version 12.2
service timestamps debug datetime msec
service timestamps log datetime msec
no service password-encryption
!
hostname Spoke
!
no logging on
!
ip subnet-zero
no ip domain lookup
!
ip cef
!
!
crypto isakmp policy 10
  encr 3des
  authentication pre-share
  group 2
crypto isakmp key cisco123 address 10.48.67.181
!
!
crypto ipsec transform-set myset esp-3des esp-sha-hmac
!

!--- Standard crypto map on the spoke router
!--- that references the known hub IP address.

crypto map mymap 10 ipsec-isakmp
  set peer 10.48.67.181
  set transform-set myset
  match address 100
!
!
controller ISA 5/1
!
!
interface FastEthernet0/0

```

```

description Outside interface

ip address dhcp
duplex auto
speed auto
crypto map mymap
!
interface FastEthernet0/1
description Inside interface
ip address 10.2.2.2 255.255.255.0
duplex auto
speed auto
no keepalive
!
interface ATM1/0
no ip address
shutdown
no atm ilmi-keepalive
!
ip classless
ip route 0.0.0.0 0.0.0.0 10.100.2.3
no ip http server
no ip http secure-server
!
!

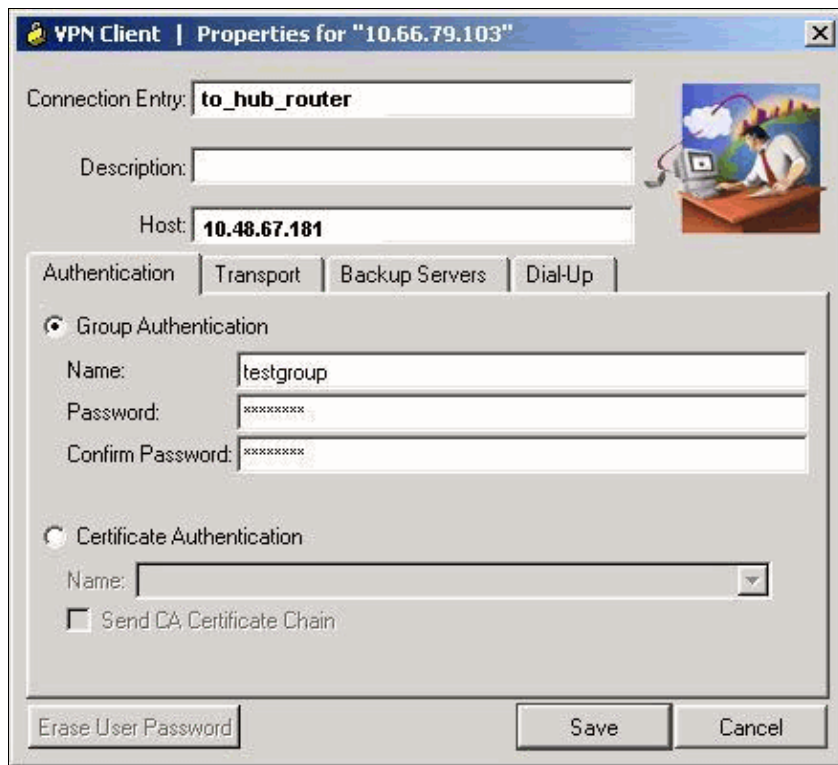
!--- Standard access-list that references traffic to be
!--- encrypted. This is the only thing that needs
!--- to be changed between different spoke routers.

access-list 100 permit ip 10.2.0.0 0.0.255.255 10.1.0.0 0.0.255.255
!
!
call rsvp-sync
!
!
mgcp profile default
!
!
line con 0
  exec-timeout 0 0
line aux 0
line vty 0 4
  password cisco
  login
!
!
end

```

## VPN Client

Create a new connection entry that references the IP address of the hub router. The group name in this example is "testgroup" and the password is "cisco321". This can be seen in the hub router configuration.



## Verify

Use this section to confirm that your configuration works properly.

Debug commands that run on the hub router can confirm that the correct parameters are matched for the spoke and VPN Client connections.

The Output Interpreter Tool (registered customers only) (OIT) supports certain **show** commands. Use the OIT to view an analysis of **show** command output.

**Note:** Refer to Important Information on Debug Commands before you use **debug** commands.

- **show ip interface** Displays the IP address assignment to the spoke router.
- **show crypto isakmp sa detail** Displays the IKE SAs, which have been set-up between the IPsec initiators. For example, the spoke router and the VPN Client, and the hub router.
- **show crypto ipsec sa** Displays the IPsec SAs, which have been set-up between the IPsec initiators. For example, the spoke router and the VPN Client, and the hub router.
- **debug crypto isakmp** Displays messages about Internet Key Exchange (IKE) events.
- **debug crypto ipsec** Displays IPsec events.
- **debug crypto engine** Displays crypto engine events.

This is the output from the **show ip interface f0/0** command.

```
spoke#show ip interface f0/0
FastEthernet0/1 is up, line protocol is up
Internet address is 10.100.2.102/24
Broadcast address is 255.255.255.255
Address determined by DHCP
```

This is the output of the **show crypto isakmp sa detail** command.

```
hub#show crypto isakmp sa detail
```

Codes: C - IKE configuration mode, D - Dead Peer Detection

K - Keepalives, N - NAT-traversal

X - IKE Extended Authentication

psk - Preshared key, rsig - RSA signature

renc - RSA encryption

C-id	Local	Remote	I-VRF	Encr	Hash	Auth	DH	Lifetime	Cap.
1	10.48.67.181	10.100.2.102		3des	sha	psk	2	04:15:43	
2	10.48.67.181	10.51.82.100		3des	sha		2	05:31:58	CX

This is the output of the **show crypto ipsec sa** command.

```
hub#show crypto ipsec sa
```

```
interface: FastEthernet0/0
```

```
Crypto map tag: mymap, local addr. 10.48.67.181
```

```
protected vrf:
```

```
local ident (addr/mask/prot/port): (0.0.0.0/0.0.0.0/0/0)
```

```
remote ident (addr/mask/prot/port): (10.5.5.1/255.255.255.255/0/0)
```

```
current_peer: 10.51.82.100:500
```

```
PERMIT, flags={}
```

```
#pkts encaps: 8, #pkts encrypt: 8, #pkts digest 8
```

```
#pkts decaps: 189, #pkts decrypt: 189, #pkts verify 189
```

```
#pkts compressed: 0, #pkts decompressed: 0
```

```
#pkts not compressed: 0, #pkts compr. failed: 0
```

```
#pkts not decompressed: 0, #pkts decompress failed: 0
```

```
#send errors 0, #recv errors 0
```

```
local crypto endpt.: 10.48.67.181, remote crypto endpt.: 10.51.82.100
```

```
path mtu 1500, ip mtu 1500
```

```
current outbound spi: B0C0F4AC
```

```
inbound esp sas:
```

```
spi: 0x7A1AB8F3(2048571635)
```

```
transform: esp-3des esp-sha-hmac ,
```

```
in use settings ={Tunnel, }
```

```
slot: 0, conn id: 2004, flow_id: 5, crypto map: mymap
```

```
sa timing: remaining key lifetime (k/sec): (4602415/3169)
```

```
IV size: 8 bytes
```

```
replay detection support: Y
```

```
inbound ah sas:
```

```
inbound pcp sas:
```

```
outbound esp sas:
```

```
spi: 0xB0C0F4AC(2965435564)
```

```
transform: esp-3des esp-sha-hmac ,
```

```
in use settings ={Tunnel, }
```

```
slot: 0, conn id: 2005, flow_id: 6, crypto map: mymap
```

```
sa timing: remaining key lifetime (k/sec): (4602445/3169)
```

```
IV size: 8 bytes
```

```
replay detection support: Y
```

```
outbound ah sas:
```

```

outbound pcp sas:

protected vrf:
local ident (addr/mask/prot/port): (10.1.0.0/255.255.0.0/0/0)
remote ident (addr/mask/prot/port): (10.2.0.0/255.255.0.0/0/0)
current_peer: 10.100.2.102:500
PERMIT, flags={}
#pkts encaps: 19, #pkts encrypt: 19, #pkts digest 19
#pkts decaps: 19, #pkts decrypt: 19, #pkts verify 19
#pkts compressed: 0, #pkts decompressed: 0
#pkts not compressed: 0, #pkts compr. failed: 0
#pkts not decompressed: 0, #pkts decompress failed: 0
#send errors 0, #recv errors 0

local crypto endpt.: 10.48.67.181, remote crypto endpt.: 10.100.2.102
path mtu 1500, ip mtu 1500
current outbound spi: 5FBE5408

inbound esp sas:
spi: 0x9CD7288C(2631346316)
transform: esp-3des esp-sha-hmac ,
in use settings ={Tunnel, }
slot: 0, conn id: 2002, flow_id: 3, crypto map: mymap
sa timing: remaining key lifetime (k/sec): (4569060/2071)
IV size: 8 bytes
replay detection support: Y

inbound ah sas:

inbound pcp sas:

outbound esp sas:
spi: 0x5FBE5408(1606308872)
transform: esp-3des esp-sha-hmac ,
in use settings ={Tunnel, }
slot: 0, conn id: 2003, flow_id: 4, crypto map: mymap
sa timing: remaining key lifetime (k/sec): (4569060/2070)
IV size: 8 bytes
replay detection support: Y

outbound ah sas:

outbound pcp sas:

```

This debug output has been collected on the hub router, when the spoke router initiates IKE and IPsec SAs.

```

ISAKMP (0:0): received packet from 10.100.2.102 dport 500 sport 500
          Global (N) NEW SA
ISAKMP: local port 500, remote port 500
ISAKMP: insert sa successfully sa = 63D5BE0C
ISAKMP (0:1): Input = IKE_MSG_FROM_PEER, IKE_MM_EXCH
ISAKMP (0:1): Old State = IKE_READY New State = IKE_R_MM1

ISAKMP (0:1): processing SA payload. message ID = 0
ISAKMP: Looking for a matching key for 10.100.2.102 in default
ISAKMP: Looking for a matching key for 10.100.2.102 in spokes : success
ISAKMP (0:1): found peer pre-shared key matching 10.100.2.102
ISAKMP (0:1) local preshared key found
ISAKMP : Scanning profiles for xauth ... L2L VPNclient
ISAKMP (0:1) Authentication by xauth preshared
ISAKMP (0:1): Checking ISAKMP transform 1 against priority 10 policy
ISAKMP: encryption 3DES-CBC
ISAKMP: hash SHA
ISAKMP: default group 2
ISAKMP: auth pre-share
ISAKMP: life type in seconds

```

```
ISAKMP: life duration (VPI) of 0x0 0x1 0x51 0x80
ISAKMP (0:1): atts are acceptable. Next payload is 0
CryptoEngine0: generate alg parameter
CRYPTO_ENGINE: Dh phase 1 status: 0
CRYPTO_ENGINE: Dh phase 1 status: 0
ISAKMP (0:1): Input = IKE_MSG_INTERNAL, IKE_PROCESS_MAIN_MODE
ISAKMP (0:1): Old State = IKE_R_MM1 New State = IKE_R_MM1

ISAKMP (0:1): sending packet to 10.100.2.102 my_port 500 peer_port
500 (R) MM_SA_SETUP
ISAKMP (0:1): Input = IKE_MSG_INTERNAL, IKE_PROCESS_COMPLETE
ISAKMP (0:1): Old State = IKE_R_MM1 New State = IKE_R_MM2

ISAKMP (0:1): received packet from 10.100.2.102 dport 500 sport 500
Global (R) MM_SA_SETUP
ISAKMP (0:1): Input = IKE_MSG_FROM_PEER, IKE_MM_EXCH
ISAKMP (0:1): Old State = IKE_R_MM2 New State = IKE_R_MM3

ISAKMP (0:1): processing KE payload. message ID = 0
CryptoEngine0: generate alg parameter
ISAKMP (0:1): processing NONCE payload. message ID = 0
ISAKMP: Looking for a matching key for 10.100.2.102 in default
ISAKMP: Looking for a matching key for 10.100.2.102 in spokes : success
ISAKMP (0:1): found peer pre-shared key matching 10.100.2.102
CryptoEngine0: create ISAKMP SKEYID for conn id 1
ISAKMP (0:1): SKEYID state generated
ISAKMP (0:1): processing vendor id payload
ISAKMP (0:1): speaking to another IOS box!
ISAKMP (0:1): Input = IKE_MSG_INTERNAL, IKE_PROCESS_MAIN_MODE
ISAKMP (0:1): Old State = IKE_R_MM3 New State = IKE_R_MM3

ISAKMP (0:1): sending packet to 10.100.2.102 my_port 500 peer_port 500
(R) MM_KEY_EXCH
ISAKMP (0:1): Input = IKE_MSG_INTERNAL, IKE_PROCESS_COMPLETE
ISAKMP (0:1): Old State = IKE_R_MM3 New State = IKE_R_MM4

ISAKMP (0:1): received packet from 10.100.2.102 dport 500 sport 500
Global (R) MM_KEY_EXCH
ISAKMP (0:1): Input = IKE_MSG_FROM_PEER, IKE_MM_EXCH
ISAKMP (0:1): Old State = IKE_R_MM4 New State = IKE_R_MM5

ISAKMP (0:1): processing ID payload. message ID = 0
ISAKMP (0:1): ID payload
next-payload : 8
type : 1
address : 10.100.2.102
protocol : 17
port : 500
length : 12
ISAKMP (0:1): peer matches L2L profile
ISAKMP: Looking for a matching key for 10.100.2.102 in default
ISAKMP: Looking for a matching key for 10.100.2.102 in spokes : success
ISAKMP (0:1): Found ADDRESS key in keyring spokes
ISAKMP (0:1): processing HASH payload. message ID = 0
CryptoEngine0: generate hmac context for conn id 1
ISAKMP (0:1): SA authentication status: authenticated
ISAKMP (0:1): SA has been authenticated with 10.100.2.102
ISAKMP (0:1): Input = IKE_MSG_INTERNAL, IKE_PROCESS_MAIN_MODE
ISAKMP (0:1): Old State = IKE_R_MM5 New State = IKE_R_MM5

ISAKMP (0:1): SA is doing pre-shared key authentication using id type ID_IPV4_ADDR
ISAKMP (0:1): ID payload
next-payload : 8
type : 1
address : 10.48.67.181
protocol : 17
```

```
port : 500
length : 12
ISAKMP (1): Total payload length: 12
CryptoEngine0: generate hmac context for conn id 1
CryptoEngine0: clear dh number for conn id 1
ISAKMP (0:1): sending packet to 10.100.2.102 my_port 500 peer_port 500
(R) MM_KEY_EXCH
ISAKMP (0:1): Input = IKE_MSG_INTERNAL, IKE_PROCESS_COMPLETE
ISAKMP (0:1): Old State = IKE_R_MM5 New State = IKE_P1_COMPLETE

ISAKMP (0:1): Input = IKE_MSG_INTERNAL, IKE_PHASE1_COMPLETE
ISAKMP (0:1): Old State = IKE_P1_COMPLETE New State = IKE_P1_COMPLETE
```

*!--- IKE phase 1 is complete.*

```
ISAKMP (0:1): received packet from 10.100.2.102 dport 500 sport 500 Global
(R) QM_IDLE
ISAKMP: set new node 904613356 to QM_IDLE
CryptoEngine0: generate hmac context for conn id 1
ISAKMP (0:1): processing HASH payload. message ID = 904613356
ISAKMP (0:1): processing SA payload. message ID = 904613356
ISAKMP (0:1): Checking IPsec proposal 1
ISAKMP: transform 1, ESP_3DES
ISAKMP: attributes in transform:
ISAKMP: encaps is 1 (Tunnel)
ISAKMP: SA life type in seconds
ISAKMP: SA life duration (basic) of 3600
ISAKMP: SA life type in kilobytes
ISAKMP: SA life duration (VPI) of 0x0 0x46 0x50 0x0
ISAKMP: authenticator is HMAC-SHA
CryptoEngine0: validate proposal
ISAKMP (0:1): atts are acceptable.
IPSEC(validate_proposal_request): proposal part #1,
(key eng. msg.) INBOUND local= 10.48.67.181, remote= 10.100.2.102,
local_proxy= 10.1.0.0/255.255.0.0/0/0 (type=4),
remote_proxy= 10.2.0.0/255.255.0.0/0/0 (type=4),
protocol= ESP, transform= esp-3des esp-sha-hmac (Tunnel),
lifedur= 0s and 0kb,
spi= 0x0(0), conn_id= 0, keysize= 0, flags= 0x2
CryptoEngine0: validate proposal request
IPSEC(kei_proxy): head = mymap, map->ivrf = , kei->ivrf =
IPSEC(kei_proxy): head = mymap, map->ivrf = , kei->ivrf =
ISAKMP (0:1): processing NONCE payload. message ID = 904613356
ISAKMP (0:1): processing ID payload. message ID = 904613356
ISAKMP (0:1): processing ID payload. message ID = 904613356
ISAKMP (0:1): asking for 1 spis from ipsec
ISAKMP (0:1): Node 904613356, Input = IKE_MSG_FROM_PEER, IKE_QM_EXCH
ISAKMP (0:1): Old State = IKE_QM_READY New State = IKE_QM_SPI_STARVE
IPSEC(key_engine): got a queue event...
IPSEC(spi_response): getting spi 4172528328 for SA from 10.48.67.181 to
10.100.2.102 for prot 3
ISAKMP: received ke message (2/1)
CryptoEngine0: generate hmac context for conn id 1
ISAKMP (0:1): sending packet to 10.100.2.102 my_port 500 peer_port 500 (R) QM_IDLE
ISAKMP (0:1): Node 904613356, Input = IKE_MSG_FROM_IPSEC, IKE_SPI_REPLY
ISAKMP (0:1): Old State = IKE_QM_SPI_STARVE New State = IKE_QM_R_QM2
ISAKMP (0:1): received packet from 10.100.2.102 dport 500 sport 500 Global
(R) QM_IDLE
CryptoEngine0: generate hmac context for conn id 1
CryptoEngine0: ipsec allocate flow
CryptoEngine0: ipsec allocate flow
ISAKMP (0:1): Creating IPsec SAs
inbound SA from 10.100.2.102 to 10.48.67.181 (f/i) 0/ 0
(proxy 10.2.0.0 to 10.1.0.0)
```

```

has spi 0xF8B3BAC8 and conn_id 2000 and flags 2
lifetime of 3600 seconds
lifetime of 4608000 kilobytes
has client flags 0x0
outbound SA from 10.48.67.181 to 10.100.2.102 (f/i) 0/ 0
(proxy 10.1.0.0 to 10.2.0.0 )
has spi 1757151497 and conn_id 2001 and flags A
lifetime of 3600 seconds
lifetime of 4608000 kilobytes
has client flags 0x0
ISAKMP (0:1): deleting node 904613356 error FALSE reason "quick mode done (await)"
ISAKMP (0:1): Node 904613356, Input = IKE_MSG_FROM_PEER, IKE_QM_EXCH
ISAKMP (0:1): Old State = IKE_QM_R_QM2 New State = IKE_QM_PHASE2_COMPLETE
IPSEC(key_engine): got a queue event...
IPSEC(initialize_sas): ,
(key eng. msg.) INBOUND local= 10.48.67.181, remote= 10.100.2.102,
local_proxy= 10.1.0.0/255.255.0.0/0/0 (type=4),
remote_proxy= 10.2.0.0/255.255.0.0/0/0 (type=4),
protocol= ESP, transform= esp-3des esp-sha-hmac (Tunnel),
lifedur= 3600s and 4608000kb,
spi= 0xF8B3BAC8(4172528328), conn_id= 2000, keysize= 0, flags= 0x2
IPSEC(initialize_sas): ,
(key eng. msg.) OUTBOUND local= 10.48.67.181, remote= 10.100.2.102,
local_proxy= 10.1.0.0/255.255.0.0/0/0 (type=4),
remote_proxy= 10.2.0.0/255.255.0.0/0/0 (type=4),
protocol= ESP, transform= esp-3des esp-sha-hmac (Tunnel),
lifedur= 3600s and 4608000kb,
spi= 0x68BC0109(1757151497), conn_id= 2001, keysize= 0, flags= 0xA
IPSEC(kei_proxy): head = mymap, map->ivrf = , kei->ivrf =
IPSEC(kei_proxy): head = mymap, map->ivrf = , kei->ivrf =
IPSEC(add mtree): src 10.1.0.0, dest 10.2.0.0, dest_port 0

IPSEC(create_sa): sa created,
(sa) sa_dest= 10.48.67.181, sa_prot= 50,
sa_spi= 0xF8B3BAC8(4172528328),
sa_trans= esp-3des esp-sha-hmac , sa_conn_id= 2000
IPSEC(create_sa): sa created,
(sa) sa_dest= 10.100.2.102, sa_prot= 50,
sa_spi= 0x68BC0109(1757151497),
sa_trans= esp-3des esp-sha-hmac , sa_conn_id= 2001

```

This debug output has been collected on the hub router, when the VPN Client initiates IKE and IPsec SAs.

```

ISAKMP (0:0): received packet from 10.51.82.100 dport 500 sport 500 Global
(N) NEW SA
ISAKMP: local port 500, remote port 500
ISAKMP: insert sa successfully sa = 63D3D804
ISAKMP (0:2): processing SA payload. message ID = 0
ISAKMP (0:2): processing ID payload. message ID = 0
ISAKMP (0:2): ID payload
next-payload : 13
type : 11
group id : testgroup
protocol : 17
port : 500
length : 17
ISAKMP (0:2): peer matches VPNclient profile
ISAKMP: Looking for a matching key for 10.51.82.100 in default
ISAKMP: Looking for a matching key for 10.51.82.100 in spokes : success
ISAKMP: Created a peer struct for 10.51.82.100, peer port 500
ISAKMP: Locking peer struct 0x644AFC7C, IKE refcount 1 for
crypto_ikmp_config_initialize_sa
ISAKMP (0:2): Setting client config settings 644AFCF8
ISAKMP (0:2): (Re)Setting client xauth list and state
ISAKMP (0:2): processing vendor id payload
ISAKMP (0:2): vendor ID seems Unity/DPD but major 215 mismatch

```

```
ISAKMP (0:2): vendor ID is Xauth
ISAKMP (0:2): processing vendor id payload
ISAKMP (0:2): vendor ID is DPD
ISAKMP (0:2): processing vendor id payload
ISAKMP (0:2): vendor ID seems Unity/DPD but major 123 mismatch
ISAKMP (0:2): vendor ID is NAT-T v2
ISAKMP (0:2): processing vendor id payload
ISAKMP (0:2): vendor ID seems Unity/DPD but major 194 mismatch
ISAKMP (0:2): processing vendor id payload
ISAKMP (0:2): vendor ID is Unity
ISAKMP (0:2) Authentication by xauth preshared
```

*!--- Check of ISAKMP transforms against the configured ISAKMP policy.*

```
ISAKMP (0:2): Checking ISAKMP transform 9 against priority 10 policy
ISAKMP: encryption 3DES-CBC
ISAKMP: hash SHA
ISAKMP: default group 2
ISAKMP: auth XAUTHInitPreShared
ISAKMP: life type in seconds
ISAKMP: life duration (VPI) of 0x0 0x20 0xC4 0x9B
ISAKMP (0:2): atts are acceptable. Next payload is 3
CryptoEngine0: generate alg parameter
CRYPTO_ENGINE: Dh phase 1 status: 0
CRYPTO_ENGINE: Dh phase 1 status: 0
ISAKMP (0:2): processing KE payload. message ID = 0
CryptoEngine0: generate alg parameter
ISAKMP (0:2): processing NONCE payload. message ID = 0
ISAKMP (0:2): vendor ID is NAT-T v2
ISAKMP (0:2): Input = IKE_MESG_FROM_PEER, IKE_AM_EXCH
ISAKMP (0:2): Old State = IKE_READY New State = IKE_R_AM_AAA_AWAIT
```

```
ISAKMP: got callback 1
CryptoEngine0: create ISAKMP SKEYID for conn id 2
ISAKMP (0:2): SKEYID state generated
ISAKMP (0:2): constructed NAT-T vendor-02 ID
ISAKMP (0:2): SA is doing pre-shared key authentication plus XAUTH
                using id type ID_IPV4_ADDR
ISAKMP (0:2): ID payload
next-payload : 10
type : 1
address : 10.48.67.181
protocol : 17
port : 0
length : 12
ISAKMP (2): Total payload length: 12
CryptoEngine0: generate hmac context for conn id 2
ISAKMP (0:2): sending packet to 10.51.82.100 my_port 500 peer_port 500
                (R) AG_INIT_EXCH
ISAKMP (0:2): Input = IKE_MESG_FROM_AAA, PRESHARED_KEY_REPLY
ISAKMP (0:2): Old State = IKE_R_AM_AAA_AWAIT New State = IKE_R_AM2
```

```
ISAKMP (0:2): received packet from 10.51.82.100 dport 500 sport 500 Global
                (R) AG_INIT_EXCH
ISAKMP (0:2): processing HASH payload. message ID = 0
CryptoEngine0: generate hmac context for conn id 2
ISAKMP (0:2): processing NOTIFY INITIAL_CONTACT protocol 1
spi 0, message ID = 0, sa = 63D3D804
ISAKMP (0:2): SA authentication status: authenticated
ISAKMP (0:2): Process initial contact,
bring down existing phase 1 and 2 SA's with local 10.48.67.181 remote
                10.51.82.100 remote port 500
ISAKMP (0:2): returning IP addr to the address pool
IPSEC(key_engine): got a queue event...
```

ISAKMP:received payload type 17  
ISAKMP:received payload type 17  
**ISAKMP (0:2): SA authentication status: authenticated**  
**ISAKMP (0:2): SA has been authenticated with 10.51.82.100**  
CryptoEngine0: clear dh number for conn id 1  
ISAKMP: Trying to insert a peer 10.48.67.181/10.51.82.100/500/,  
and inserted successfully.  
ISAKMP: set new node 1257790711 to CONF\_XAUTH  
CryptoEngine0: generate hmac context for conn id 2  
ISAKMP (0:2): sending packet to 10.51.82.100 my\_port 500 peer\_port 500 (R) QM\_IDLE  
ISAKMP (0:2): purging node 1257790711  
ISAKMP: Sending phase 1 responder lifetime 86400  
  
ISAKMP (0:2): Input = IKE\_MSG\_FROM\_PEER, IKE\_AM\_EXCH  
ISAKMP (0:2): Old State = IKE\_R\_AM2 New State = IKE\_P1\_COMPLETE  
  
ISAKMP (0:2): Need XAUTH  
ISAKMP (0:2): Input = IKE\_MSG\_INTERNAL, IKE\_PHASE1\_COMPLETE  
ISAKMP (0:2): Old State = IKE\_P1\_COMPLETE New State = IKE\_XAUTH\_AAA\_START\_LOGIN\_AWAIT  
  
ISAKMP: got callback 1  
ISAKMP: set new node 955647754 to CONF\_XAUTH

*!--- Extended authentication begins.*

**ISAKMP/xauth: request attribute XAUTH\_USER\_NAME\_V2**  
**ISAKMP/xauth: request attribute XAUTH\_USER\_PASSWORD\_V2**  
CryptoEngine0: generate hmac context for conn id 2  
ISAKMP (0:2): initiating peer config to 10.51.82.100. ID = 955647754  
ISAKMP (0:2): sending packet to 10.51.82.100 my\_port 500 peer\_port 500  
(R) CONF\_XAUTH  
ISAKMP (0:2): Input = IKE\_MSG\_FROM\_AAA, IKE\_AAA\_START\_LOGIN  
ISAKMP (0:2): Old State = IKE\_XAUTH\_AAA\_START\_LOGIN\_AWAIT New State =  
IKE\_XAUTH\_REQ\_SENT  
  
ISAKMP (0:2): received packet from 10.51.82.100 dport 500 sport 500 Global  
(R) CONF\_XAUTH  
ISAKMP (0:2): processing transaction payload from 10.51.82.100. message  
ID = 955647754  
CryptoEngine0: generate hmac context for conn id 2  
ISAKMP: Config payload REPLY

*!--- Username/password received from the VPN Client.*

**ISAKMP/xauth: reply attribute XAUTH\_USER\_NAME\_V2**  
**ISAKMP/xauth: reply attribute XAUTH\_USER\_PASSWORD\_V2**  
ISAKMP (0:2): deleting node 955647754 error FALSE reason "done with  
xauth request/reply exchange"  
ISAKMP (0:2): Input = IKE\_MSG\_FROM\_PEER, IKE\_CFG\_REPLY  
ISAKMP (0:2): Old State = IKE\_XAUTH\_REQ\_SENT New State =  
IKE\_XAUTH\_AAA\_CONT\_LOGIN\_AWAIT  
  
ISAKMP: got callback 1  
ISAKMP: set new node -118110738 to CONF\_XAUTH  
CryptoEngine0: generate hmac context for conn id 2  
ISAKMP (0:2): initiating peer config to 10.51.82.100. ID = -118110738  
ISAKMP (0:2): sending packet to 10.51.82.100 my\_port 500 peer\_port  
500 (R) CONF\_XAUTH  
ISAKMP (0:2): Input = IKE\_MSG\_FROM\_AAA, IKE\_AAA\_CONT\_LOGIN  
ISAKMP (0:2): Old State = IKE\_XAUTH\_AAA\_CONT\_LOGIN\_AWAIT New State =  
IKE\_XAUTH\_SET\_SENT

ISAKMP (0:2): received packet from 10.51.82.100 dport 500 sport 500 Global  
(R) CONF\_XAUTH  
ISAKMP (0:2): processing transaction payload from 10.51.82.100. message  
ID = -1118110738  
CryptoEngine0: generate hmac context for conn id 2

*!--- Success*

ISAKMP: Config payload ACK  
**ISAKMP (0:2): XAUTH ACK Processed**  
ISAKMP (0:2): deleting node -1118110738 error FALSE reason "done with transaction"  
ISAKMP (0:2): Input = IKE\_MSG\_FROM\_PEER, IKE\_CFG\_ACK  
ISAKMP (0:2): Old State = IKE\_XAUTH\_SET\_SENT New State = IKE\_P1\_COMPLETE  
  
ISAKMP (0:2): Input = IKE\_MSG\_INTERNAL, IKE\_PHASE1\_COMPLETE  
ISAKMP (0:2): Old State = IKE\_P1\_COMPLETE New State = IKE\_P1\_COMPLETE  
  
ISAKMP (0:2): received packet from 10.51.82.100 dport 500 sport 500  
Global (R) QM\_IDLE  
ISAKMP: set new node -798495444 to QM\_IDLE  
ISAKMP (0:2): processing transaction payload from 10.51.82.100. message  
ID = -798495444  
CryptoEngine0: generate hmac context for conn id 2  
ISAKMP: Config payload REQUEST  
ISAKMP (0:2): checking request:  
ISAKMP: IP4\_ADDRESS  
ISAKMP: IP4\_NETMASK  
ISAKMP: IP4\_DNS  
ISAKMP: IP4\_NBNS  
ISAKMP: ADDRESS\_EXPIRY  
ISAKMP: UNKNOWN Unknown Attr: 0x7000  
ISAKMP: UNKNOWN Unknown Attr: 0x7001  
ISAKMP: DEFAULT\_DOMAIN  
ISAKMP: SPLIT\_INCLUDE  
ISAKMP: UNKNOWN Unknown Attr: 0x7003  
ISAKMP: UNKNOWN Unknown Attr: 0x7007  
ISAKMP: UNKNOWN Unknown Attr: 0x7009  
ISAKMP: APPLICATION\_VERSION  
ISAKMP: UNKNOWN Unknown Attr: 0x7008  
ISAKMP: UNKNOWN Unknown Attr: 0x700A  
ISAKMP: UNKNOWN Unknown Attr: 0x7005  
ISAKMP (0:2): Input = IKE\_MSG\_FROM\_PEER, IKE\_CFG\_REQUEST  
ISAKMP (0:2): Old State = IKE\_P1\_COMPLETE New State = IKE\_CONFIG\_AUTHOR\_AAA\_AWAIT  
  
ISAKMP: got callback 1  
ISAKMP (0:2): attributes sent in message:  
Address: 0.2.0.0  
**ISAKMP (0:2): allocating address 10.5.5.1**  
**ISAKMP: Sending private address: 10.5.5.1**  
**ISAKMP: Sending IP4\_DNS server address: 1.1.1.1**  
**ISAKMP: Sending IP4\_DNS server address: 2.2.2.2**  
**ISAKMP: Sending IP4\_NBNS server address: 3.3.3.3**  
**ISAKMP: Sending IP4\_NBNS server address: 4.4.4.4**  
ISAKMP: Sending ADDRESS\_EXPIRY seconds left to use the address: 86386  
ISAKMP (0/2): Unknown Attr: UNKNOWN (0x7000)  
ISAKMP (0/2): Unknown Attr: UNKNOWN (0x7001)  
ISAKMP: Sending DEFAULT\_DOMAIN default domain name: cisco.com  
ISAKMP (0/2): Unknown Attr: UNKNOWN (0x7003)  
ISAKMP (0/2): Unknown Attr: UNKNOWN (0x7007)  
ISAKMP (0/2): Unknown Attr: UNKNOWN (0x7009)  
ISAKMP: Sending APPLICATION\_VERSION string: Cisco Internetwork Operating  
System Software  
IOS (tm) 7200 Software (C7200-IK9S-M), Version 12.3(6a), RELEASE SOFTWARE (fc4)  
Copyright (c) 1986-2004 by cisco Systems, Inc.

```
Compiled Fri 02-Apr-04 15:52 by kellythw
ISAKMP (0/2): Unknown Attr: UNKNOWN (0x7008)
ISAKMP (0/2): Unknown Attr: UNKNOWN (0x700A)
ISAKMP (0/2): Unknown Attr: UNKNOWN (0x7005)
CryptoEngine0: generate hmac context for conn id 2
ISAKMP (0:2): responding to peer config from 10.51.82.100. ID = -798495444
ISAKMP (0:2): sending packet to 10.51.82.100 my_port 500 peer_port 500 (R) CONF_ADDR
ISAKMP (0:2): deleting node -798495444 error FALSE reason ""
ISAKMP (0:2): Input = IKE_MSG_FROM_AAA, IKE_AAA_GROUP_ATTR
ISAKMP (0:2): Old State = IKE_CONFIG_AUTHOR_AAA_AWAIT New State = IKE_P1_COMPLETE

ISAKMP (0:2): Input = IKE_MSG_INTERNAL, IKE_PHASE1_COMPLETE
ISAKMP (0:2): Old State = IKE_P1_COMPLETE New State = IKE_P1_COMPLETE

!--- IKE phase 1 and Config Mode complete.
!--- Check of IPsec proposals against configured transform set(s).

ISAKMP (0:2): Checking IPsec proposal 12
ISAKMP: transform 1, ESP_3DES
ISAKMP: attributes in transform:
ISAKMP: authenticator is HMAC-SHA
ISAKMP: encaps is 1 (Tunnel)
ISAKMP: SA life type in seconds
ISAKMP: SA life duration (VPI) of 0x0 0x20 0xC4 0x9B
CryptoEngine0: validate proposal
ISAKMP (0:2): atts are acceptable.
IPSEC(validate_proposal_request): proposal part #1,
(key eng. msg.) INBOUND local= 10.48.67.181, remote= 10.51.82.100,
local_proxy= 0.0.0.0/0.0.0.0/0/0 (type=4),
remote_proxy= 10.5.5.1/255.255.255.255/0/0 (type=1),
protocol= ESP, transform= esp-3des esp-sha-hmac (Tunnel),
lifedur= 0s and 0kb,
spi= 0x0(0), conn_id= 0, keysize= 0, flags= 0x2
CryptoEngine0: validate proposal request
IPSEC(kei_proxy): head = mymap, map->ivrf = , kei->ivrf =
IPSEC(kei_proxy): head = mymap, map->ivrf = , kei->ivrf =
ISAKMP (0:2): processing NONCE payload. message ID = 381726614
ISAKMP (0:2): processing ID payload. message ID = 381726614
ISAKMP (0:2): processing ID payload. message ID = 381726614
ISAKMP (0:2): asking for 1 spis from ipsec
ISAKMP (0:2): Node 381726614, Input = IKE_MSG_FROM_PEER, IKE_QM_EXCH
ISAKMP (0:2): Old State = IKE_QM_READY New State = IKE_QM_SPI_STARVE
IPSEC(key_engine): got a queue event...
IPSEC(spi_response): getting spi 2048571635 for SA
from 10.48.67.181 to 10.51.82.100 for prot 3
ISAKMP: received ke message (2/1)
CryptoEngine0: generate hmac context for conn id 2
ISAKMP (0:2): sending packet to 10.51.82.100 my_port 500 peer_port 500 (R) QM_IDLE
ISAKMP (0:2): Node 381726614, Input = IKE_MSG_FROM_IPSEC, IKE_SPI_REPLY
ISAKMP (0:2): Old State = IKE_QM_SPI_STARVE New State = IKE_QM_R_QM2
ISAKMP (0:2): received packet from 10.51.82.100 dport 500 sport 500 Global
(R) QM_IDLE
CryptoEngine0: generate hmac context for conn id 2
CryptoEngine0: ipsec allocate flow
CryptoEngine0: ipsec allocate flow
ISAKMP: Locking peer struct 0x644AFC7C, IPSEC refcount 1 for for stuff_ke
ISAKMP (0:2): Creating IPsec SAs
inbound SA from 10.51.82.100 to 10.48.67.181 (f/i) 0/ 0
(proxy 10.5.5.1 to 0.0.0.0)
has spi 0x7A1AB8F3 and conn_id 2004 and flags 2
lifetime of 2147483 seconds
has client flags 0x0
outbound SA from 10.48.67.181 to 10.51.82.100 (f/i) 0/ 0 (proxy 0.0.0.0 to 10.5.5.1 )
has spi -1329531732 and conn_id 2005 and flags A
```

```

lifetime of 2147483 seconds
has client flags 0x0
ISAKMP (0:2): deleting node 381726614 error FALSE reason "quick mode done (await)"
ISAKMP (0:2): Node 381726614, Input = IKE_MSG_FROM_PEER, IKE_QM_EXCH
ISAKMP (0:2): Old State = IKE_QM_R_QM2 New State = IKE_QM_PHASE2_COMPLETE
IPSEC(key_engine): got a queue event...
IPSEC(initialize_sas): ,
(key eng. msg.) INBOUND local= 10.48.67.181, remote= 10.51.82.100,
local_proxy= 0.0.0.0/0.0.0.0/0/0 (type=4),
remote_proxy= 10.5.5.1/0.0.0.0/0/0 (type=1),
protocol= ESP, transform= esp-3des esp-sha-hmac (Tunnel),
lifedur= 2147483s and 0kb,
spi= 0x7A1AB8F3(2048571635), conn_id= 2004, keysize= 0, flags= 0x2
IPSEC(initialize_sas): ,
(key eng. msg.) OUTBOUND local= 10.48.67.181, remote= 10.51.82.100,
local_proxy= 0.0.0.0/0.0.0.0/0/0 (type=4),
remote_proxy= 10.5.5.1/0.0.0.0/0/0 (type=1),
protocol= ESP, transform= esp-3des esp-sha-hmac (Tunnel),
lifedur= 2147483s and 0kb,
spi= 0xB0C0F4AC(2965435564), conn_id= 2005, keysize= 0, flags= 0xA
IPSEC(kei_proxy): head = mymap, map->ivrf = , kei->ivrf =
IPSEC(kei_proxy): head = mymap, map->ivrf = , kei->ivrf =
IPSEC(add mtree): src 0.0.0.0, dest 10.5.5.1, dest_port 0

IPSEC(create_sa): sa created,
(sa) sa_dest= 10.48.67.181, sa_prot= 50,
sa_spi= 0x7A1AB8F3(2048571635),
sa_trans= esp-3des esp-sha-hmac , sa_conn_id= 2004
IPSEC(create_sa): sa created,
(sa) sa_dest= 10.51.82.100, sa_prot= 50,
sa_spi= 0xB0C0F4AC(2965435564),
sa_trans= esp-3des esp-sha-hmac , sa_conn_id= 2005

```

## Verify Crypto Map Sequence Numbers

If static and dynamic peers are configured on the same crypto map, the order of the crypto map entries is very important. The sequence number of the dynamic crypto map entry **must be** higher than all of the other static crypto map entries. If the static entries are numbered higher than the dynamic entry, connections with those peers fail.

Here is an example of a properly numbered crypto map that contains a static entry and a dynamic entry. Note that the dynamic entry has the highest sequence number and room has been left to add additional static entries:

```

crypto dynamic-map dynmap 20
set transform-set myset
crypto map mymap 10 ipsec-isakmp
match address 100
set peer 172.16.77.10
set transform-set myset
crypto map mymap 60000 ipsec-isakmp dynamic dynmap

```

## Troubleshoot

There is currently no specific troubleshooting information available for this configuration.

## NetPro Discussion Forums – Featured Conversations

Networking Professionals Connection is a forum for networking professionals to share questions, suggestions, and information about networking solutions, products, and technologies. The featured links are some of the most recent conversations available in this technology.

NetPro Discussion Forums – Featured Conversations for VPN

Service Providers: VPN Service Architectures

Service Providers: Network Management

Virtual Private Networks: General

---

## Related Information

- [IPsec Profile Configuration](#)
- [Cisco IOS Software Release 12.2\(15\)T New Features](#)
- [IPsec Negotiation/IKE Protocol Support Page](#)
- [Technical Support & Documentation – Cisco Systems](#)

---

[Contacts & Feedback](#) | [Help](#) | [Site Map](#)

© 2007 – 2008 Cisco Systems, Inc. All rights reserved. [Terms & Conditions](#) | [Privacy Statement](#) | [Cookie Policy](#) | [Trademarks of Cisco Systems, Inc.](#)

---

Updated: May 10, 2007

Document ID: 46242

---