

# Configuring DLSw Local–Switching from SDLC to Ethernet

Document ID: 30001

---

## Introduction

### Prerequisites

- Requirements

- Components Used

- Conventions

### Configure

- Network Diagram

- Configurations

### Verify

### Troubleshoot

[NetPro Discussion Forums – Featured Conversations](#)

### Related Information

---

## Introduction

This document provides a sample configuration for configuring data–link switching (DLSw) local–switching from Synchronous Data Link Control (SDLC) to Ethernet.

## Prerequisites

### Requirements

There are no specific requirements for this document.

### Components Used

This document is not restricted to specific software and hardware versions.

The information in this document was created from the devices in a specific lab environment. All of the devices used in this document started with a cleared (default) configuration. If your network is live, make sure that you understand the potential impact of any command.

### Conventions

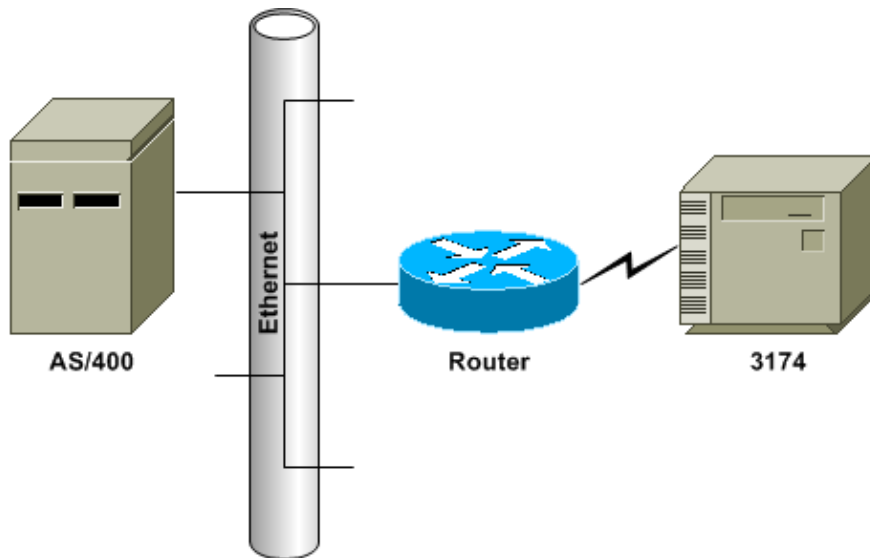
For more information on document conventions, refer to [Cisco Technical Tips Conventions](#).

## Configure

In this section, you are presented with the information to configure the features described in this document.

### Network Diagram

This document uses this network setup:



## Configurations

This document uses these configurations:

- SDLC PU 2.0 to Ethernet–Attached Host Device
- SDLC PU 2.1 to Ethernet–Attached Host Device

SDLC PU 2.0 to Ethernet–Attached Host Device
<pre>dls w local dls w bridge-group 1  interface ethernet0   bridge-group 1  interface serial0   encapsulation sdlc   clock rate 9600   sdlc role primary   sdlc vmac 4000.3174.0000   sdlc address 01   sdlc xid 01 05d2006   sdlc partner 4000.0400.1111 01   sdlc dls w 01</pre>

## Configuration Notes

For SDLC–attached devices, DLSw local–switching can be used to provide Logical Link Control 2 (LLC2) connectivity to a device on the Ethernet. The SDLC partner address references the MAC address with which the 3174 is to be in session. In this configuration, the SDLC partner address is 4000.0400.1111 and is in non–canonical Token Ring format. The MAC address is bitswapped to the canonical Ethernet format of 0200.2000.8888. This is the actual MAC address of the AS/400.

The exchange identification (XID) configured on the serial interface is for sample configuration purposes; the actual XID configured should match host definitions. Clock rate is defined on the serial interface of the router, if the router is the data circuit–terminating equipment (DCE) device and if it has the appropriate cable attached. The SDLC address shown in this configuration is 01; the actual SDLC address should match the controller's definition for it. The actual MAC address used is the SDLC Virtual Media Access Control (VMAC) address combined with the SDLC address. In this sample configuration, the VMAC is 4000.3174.0000 and the SDLC address is inserted into the last byte of the VMAC to become 4000.3174.0001.

When this is bitswapped to Ethernet, it becomes 0200.8c2e.0080.

```
SDLC PU 2.1 to Ethernet-Attached Host Device

dlsw local
dlsw bridge-group 1

interface ethernet0
  bridge-group 1

interface serial0
  encapsulation sdlc
  clock rate 9600
  sdlc role prim-xid-poll
  sdlc vmac 4000.3174.0000
  sdlc address 01
  sdlc partner 4000.0400.1111 01
  sdlc dlsw 01
```

## Configuration Notes

For a Physical Unit type 2.1 (PU 2.1) device, the XID is not configured on the router, nor is it answered by the router. The router sends the XID to the SDLC-attached device, and it and the host device are responsible for XID negotiation. The configuration for a PU 2.1 device is similar, with two differences: the SDLC XID command is not configured in the router, and the command becomes **sdlc prim-xid-poll**. With **sdlc role prim-xid-poll** configured on the router, the SDLC device is polled with XIDs instead of with Set Normal Response Modes (SNRMs).

Alternatively, if the line is multidropped and it includes PU 2.0 devices, you can issue the **sdlc role primary** command and specify **xid-poll** in the **sdlc address** command (for example, **sdlc address c1 xid-poll**). Refer to DLSw for Multidrop SDLC with PU 2.1 and PU 2.0 for more information on how to configure an SDLC interface.

## Verify

There is currently no verification procedure available for this configuration.

## Troubleshoot

This section provides information that you can use to troubleshoot your configuration.

Because this is known as a DLSw local circuit and not known over an IP cloud, you must issue the **show dlsw local-circuit** command. When the connection initializes, the router sends a SNRM frame to the controller. The controller should respond with an unnumbered acknowledgement (UA) frame. At this point, the **show dlsw reachability** command output shows the SDLC VMAC address in local reachability. Next, a test poll frame is sent to the host device.

Upon a test final response from the host device, the router's `dlsw reachability` cache will have found each MAC address attempting to reach a session. The router now sends the XID poll frame to the host and should receive a final XID from the host. The router then sends a set asynchronous balanced mode extended (SABME) and should receive a UA back. Now, the DLSw circuit is connected. During the test poll and XID negotiation period, the router continuously sends receive not ready (RNR) frames to the controller. Once the final XID is received and is correct, the router sends receive ready (RR) to the controller, indicating that the session is up and OK to send data.

If the **show dlsw local-circuit** command output indicates a CKT\_ESTABLISHED state, the XID negotiation is not completing successfully, and the XID and PU status on the host device should be examined for correctness and connectability. When the **show dlsw reachability** command output shows the MAC address of the host device as SEARCHING, the router is sending test poll frames to the host device and is not receiving test finals in return. All **show dlsw** commands will show the MAC address in Token Ring format. Ensure that the host device MAC address is connected, and verify that the bitswap of the MAC addresses is correct by using the Bitswapping Tool ( registered customers only ) .

## NetPro Discussion Forums – Featured Conversations

Networking Professionals Connection is a forum for networking professionals to share questions, suggestions, and information about networking solutions, products, and technologies. The featured links are some of the most recent conversations available in this technology.

NetPro Discussion Forums – Featured Conversations for IBM
Network Infrastructure: Enterprise Data Centers

---

## Related Information

- [Technology Support](#)
- [Product Support](#)
- [Technical Support – Cisco Systems](#)

---

[Contacts & Feedback](#) | [Help](#) | [Site Map](#)

© 2008 – 2009 Cisco Systems, Inc. All rights reserved. [Terms & Conditions](#) | [Privacy Statement](#) | [Cookie Policy](#) | [Trademarks of Cisco Systems, Inc.](#)

---

Updated: Sep 09, 2005

Document ID: 30001

---