

# How to Identify Object Identifiers in Cisco Unity Diagnostics

Document ID: 27013

---

## Introduction

### Prerequisites

Requirements

Components Used

Conventions

### Identifying the OID

Step-by-Step Instructions

An Example of Identifying OID

### Related Information

---

## Introduction

This document describes how to identify the meaning of an Object Identifier (OID) value in Cisco Unity Diagnostics traces. This is useful when you are looking through the traces and want to find out what you are looking at.

## Prerequisites

### Requirements

There are no specific requirements for this document.

### Components Used

The information in this document is based on Cisco Unity 3.1.4 and also applies to Unity 4.0.

The information in this document was created from the devices in a specific lab environment. All of the devices used in this document started with a cleared (default) configuration. If your network is live, make sure that you understand the potential impact of any command.

### Conventions

For more information on document conventions, refer to the Cisco Technical Tips Conventions.

## Identifying the OID

The steps below guide you through a simple overview of how to identify the OID and its meaning.

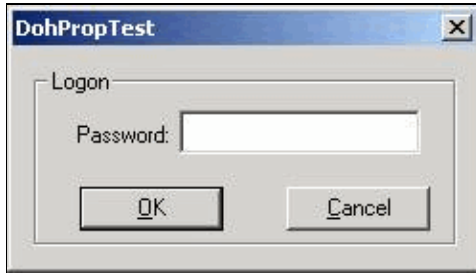
### Step-by-Step Instructions

Complete these steps:

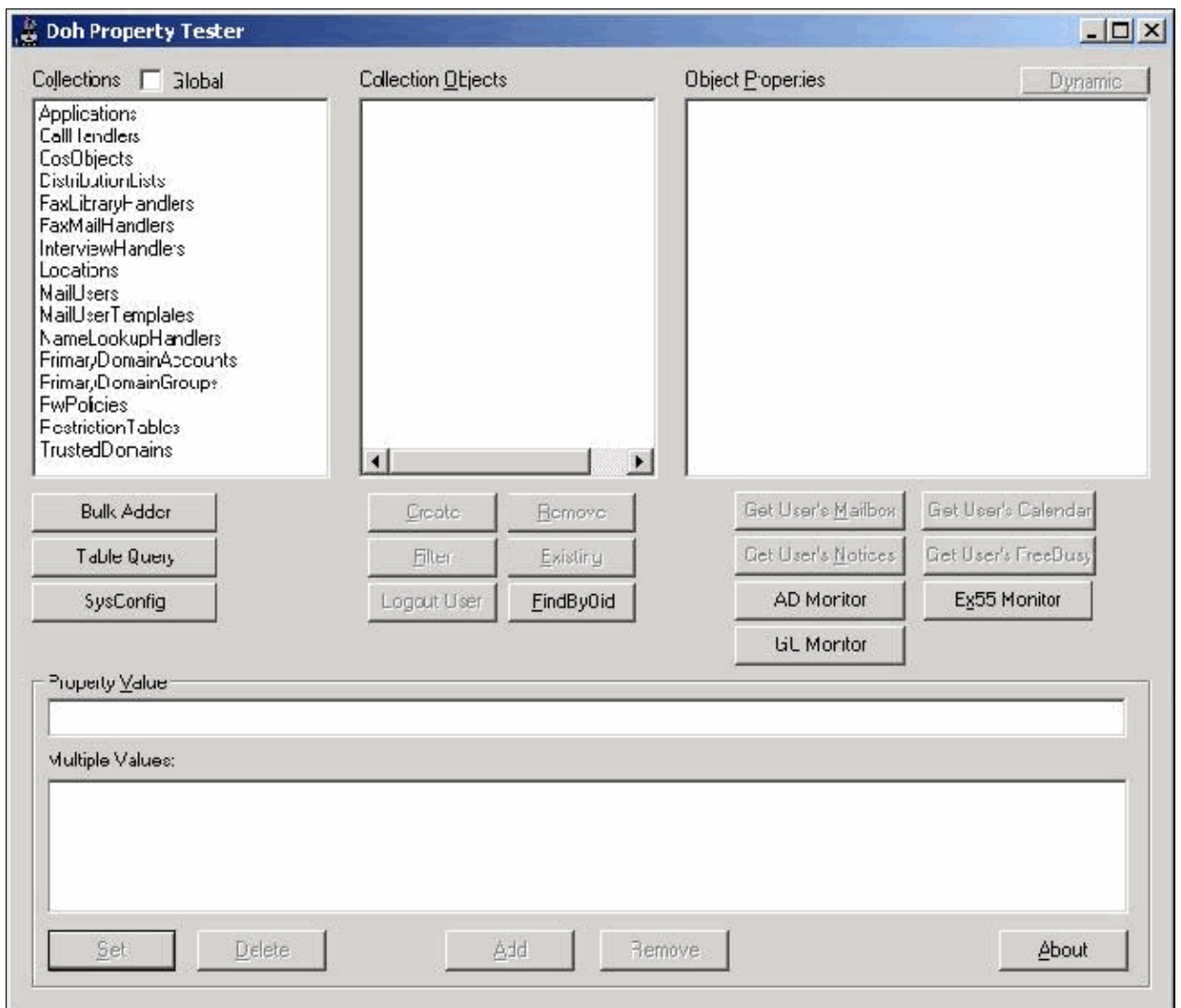
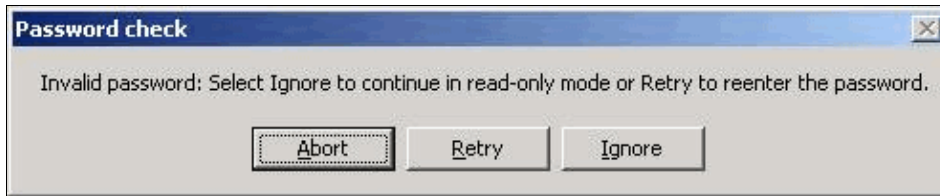
1. Copy the OID from the trace. An example is shown here:

AVP\_OBJECT\_ID,03:{5A42B9DD-B2FD-449D-A0F5-7B7C3AC33C92}

2. Open the DohPropTest window from the Commserver\techtools directory.



3. You can open up this tool without entering the password; this allows read-only access. An error comes up, but you can click **Ignore**.

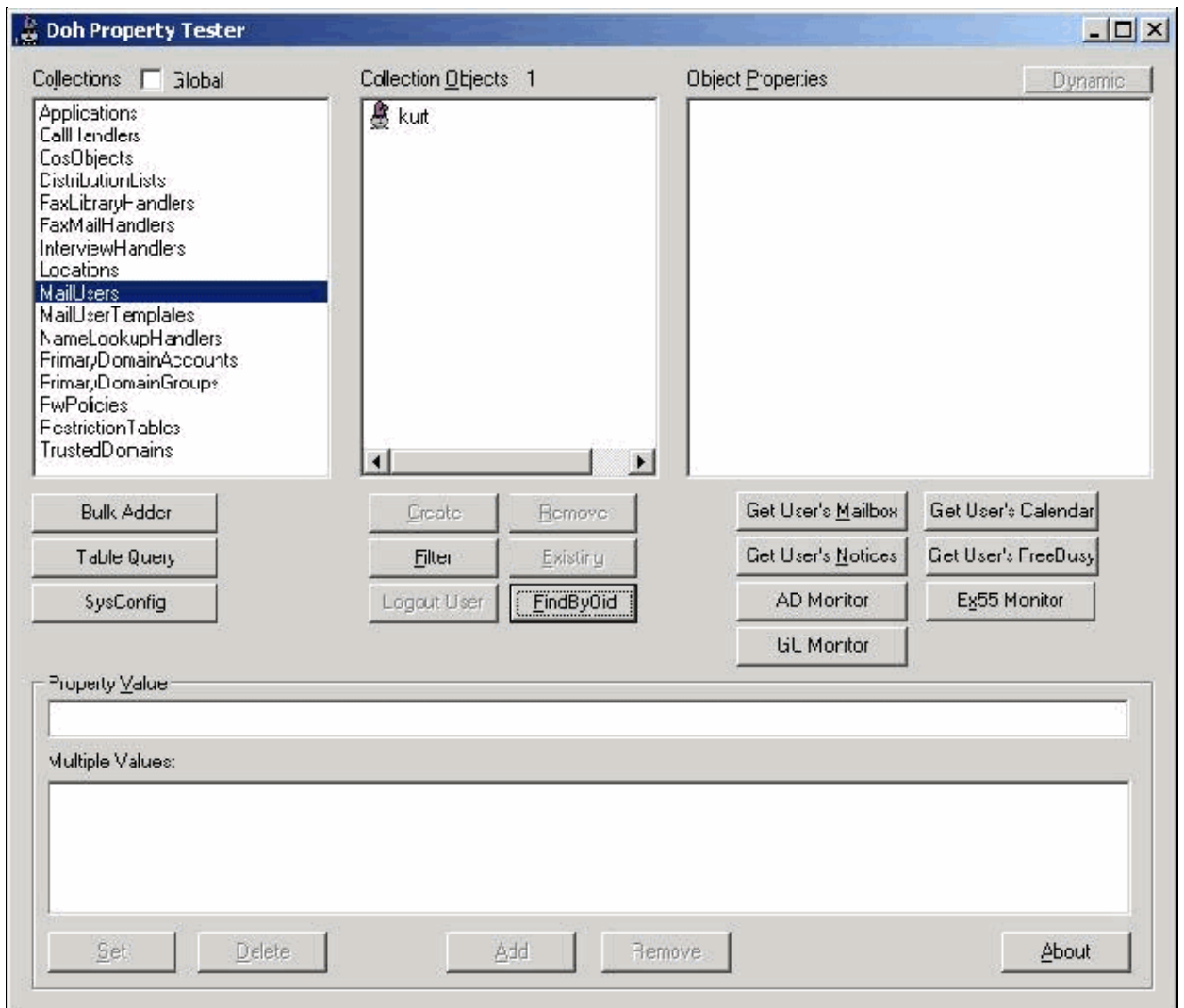


4. Click **FindByOid** and enter the OID string, in this case 03:{5A42B9DD-B2FD-449D-A0F5-7B7C3AC33C92}.



This shows you the OID referred to in the trace file. In this case, it is a mailuser ID.

**Note:** These values have only a local meaning and can only be identified when entered on the local server.



## An Example of Identifying OID

As an example, phone 302 rings to Cisco Unity and transfers out to a subscriber. The external user hears the opening greeting. This example shows a call coming in to Cisco Unity:

```
12:22:50:079,AvMiu_MC,641,-1,-1,MiuGeneral,17,2,CAvMiuCall:
:get_callerID,SysReAllocString,BSTR,8,0x00000E70
12:22:50:078,AvMiu_MC,645,-1,-1,MiuIntegration,10,Line 2,
#00#302##,12:22:50,1,Call Info,Line Call Info:
Origin:Internal Reason:Direct Calling
Number:302,0x00001014
12:22:50:079,AvMiu_MC,556,-1,-1,MiuIntegration,11,[Port 2]
```

```
CAvDigitCollector::EventFired()exited | Queue <>,
0x00001014
```

This example shows that this is a direct call (check this against the settings in the `avanalog.avd` file):

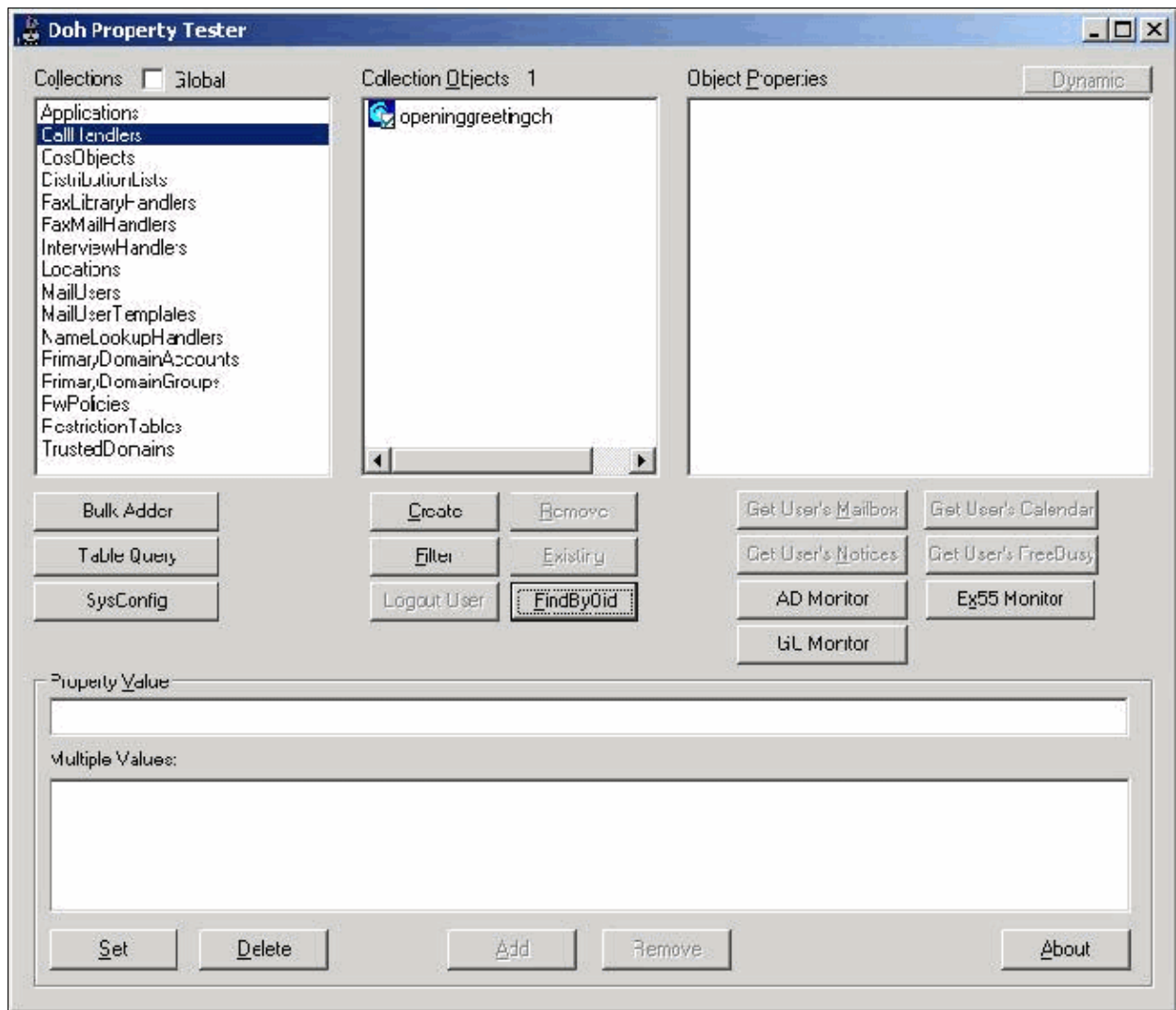
```
Data1= #00#I(3-10)## DIRECT
Data2= 00#I(3-10)## DIRECT
Data3= 0#I(3-10)## DIRECT
```

```
12:22:50:109,AvConvPHTransfer_MC,101,3696,2,ConvPH Transfer,
1,RunInit,PHTransfer
12:22:50:110,AvConvPHTransfer_MC,115,3696,2,ConvPH Transfer,
14,SetPropBool,bUseDialingDomainXfer,0x80040300,1469,
e:\views\cs_ue3.1.3.43\un_Conv2\AvConvPhoneHandler\
AvConvPHTransferSvr\AvConvPHTransfer.cpp
```

The opening greeting is being played, as shown in this example:

```
12:22:50:110,AvConvPHTransfer_MC,119,3696,2,ConvPH Transfer,24,
AVP_OBJECT_ID,03:{5A42B9DD-B2FD-449D-A0F5-7B7C3AC33C92},
1547,e:\views\cs_ue3.1.3.43\un_Conv2\AvConvPhoneHandler\
AvConvPHTransferSvr\AvConvPHTransfer.cpp
```

To check what the OID means, copy the string (in this example, `03:{5A42B9DD-B2FD-449D-A0F5-7B7C3AC33C92}`) and look it up in the `DohPropTest`. That tells you the opening greeting is being streamed.



---

## Related Information

- [Voice Technology Support](#)
- [Voice and Unified Communications Product Support](#)
- [Recommended Reading: Troubleshooting Cisco IP Telephony](#)
- [Technical Support & Documentation – Cisco Systems](#)

---

[Contacts & Feedback](#) | [Help](#) | [Site Map](#)

© 2008 – 2009 Cisco Systems, Inc. All rights reserved. [Terms & Conditions](#) | [Privacy Statement](#) | [Cookie Policy](#) | [Trademarks of Cisco Systems, Inc.](#)

---

Updated: Jan 31, 2006

Document ID: 27013

---