

# Dynamically Configuring DHCP Server Options

Document ID: 22920

---

## **Introduction**

### **Prerequisites**

- Requirements
- Components Used
- Conventions

### **Configure**

- Network Diagram
- Configurations

### **Verify**

### **Troubleshoot**

- Troubleshooting Commands

### **Related Information**

---

## **Introduction**

DHCP enables you to automatically assign reusable IP addresses to DHCP clients. This document provides an example for how to configure DHCP options such as the Domain Name System (DNS) and Windows Internet Name Service (WINS) addresses, to respond to DHCP requests from local clients behind the customer premises equipment (CPE).

Previously, network administrators had to manually configure the Cisco IOS® DHCP server on each device enabled with this feature. After a router is deployed, it is labor-intensive, time consuming, and expensive to go to each location and make modifications.

Consequently, the Cisco IOS DHCP Server was enhanced in order to allow configuration information to be updated automatically. Network administrators can configure one or more centralized DHCP server to update specific DHCP options within the DHCP pools. The remote servers can request or import these option parameters from the centralized servers.

## **Prerequisites**

### **Requirements**

Cisco recommends readers of this document have knowledge of these topics:

- DHCP
- Domain Name System (DNS)
- Windows Internet Name Service (WINS)

### **Components Used**

This configuration was developed and tested with these software and hardware versions:

- Cisco IOS® Software Release 12.2(27)
- Two Cisco 3660 routers with NM-1E used for PC and client connection

The information in this document was created from the devices in a specific lab environment. All of the devices used in this document started with a cleared (default) configuration. If your network is live, make sure that you understand the potential impact of any command.

**Note:** The Cisco IOS DHCP Server feature is introduced in Cisco IOS Software Release 12.0(1)T. You need Cisco IOS® Software Release 12.0(2)T or later for use with Cisco 1700 series routers. For more information on routers that support the DHCP Server feature, see the Supported Platforms section of Cisco IOS DHCP Server document.

## Conventions

For more information on document conventions, refer to the Cisco Technical Tips Conventions.

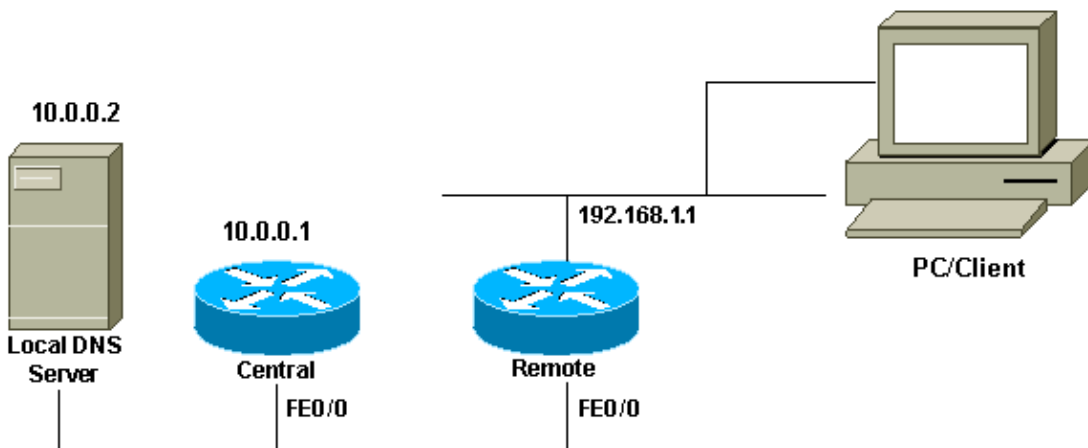
## Configure

In this section, you are presented with the information to configure DHCP Server Options for DNS and WINS. The 'Central' router is configured for these Server options and 'Remote' router imports these options. The remote PC or Client receives these imported options from the 'Remote' router during their DHCPACK stage.

**Note:** In order to find additional information on the commands used in this document, refer to DHCP Commands or use the Command Lookup Tool ( registered customers only) .

## Network Diagram

This document uses the network setup shown in this diagram:



## Configurations

This document uses these configurations:

```
Central (3660)
Central# show running-config
Building configuration...
.
.
.
ip dhcp excluded-address 10.0.0.1 10.0.0.5
```

```

!--- This range must not be assigned to DHCP clients.
!
ip dhcp pool Central
  network 10.0.0.0 255.255.255.0

!--- Specify the network number and mask for DHCP clients.

  domain-name Central

!--- Specify the domain name for the client.

  dns-server 10.0.0.2

!--- Specify the DNS server you want to respond to DHCP clients who

!--- need to correlate the host name to the IP address.

  netbios-name-server 10.0.0.2

!--- Specify the Network Basic Input/Output System (NetBIOS)

!--- WINS server (for Microsoft DHCP clients)

!
.
.
!
interface FastEthernet0/0
  ip address 10.0.0.1 255.255.255.0
  duplex auto
  speed auto
!
.
.
!
end

```

**Note:** When you use a Cisco router as DHCP server, only one domain is allowed per DHCP pool. It is not possible to mix static mapping in a dynamic Pool. If it is mixed, the % This command may not be used with network, origin, vrf, or relay pools error message appears.

#### Remote (3660)

```

Remote# show running-config
Building configuration...
.
.
.
ip dhcp excluded-address 192.168.1.1

!--- This ip address must not be assigned to DHCP clients.

!
ip dhcp pool Client
  import all

!--- Import DHCP option parameters into the database.

  network 192.168.1.0 255.255.255.248

!--- Specify the network number and mask for DHCP clients.

```

```

    default-router 192.168.1.1

!--- Specify the default gateway for DHCP clients.

!
.
.
!
interface FastEthernet0/0
 ip address dhcp
 duplex auto
 speed auto
!
interface FastEthernet1/0
 ip address 192.168.1.1 255.255.255.248
 duplex auto
 speed auto
!
end

```

The **service config** command is used in conjunction with the **boot host** or **boot network** command. The **service config** command is entered to enable the router to automatically configure the system from the file specified by the **boot host** or **boot network** command.

The **service config** command can also be used without the **boot host** or **boot network** command. If you do not specify host or network configuration filenames, the router uses the default configuration files. The default network configuration file is `network-config`. The default host configuration file is `host-config`, where host is the host name of the router. If the Cisco IOS software cannot resolve its host name, the default host configuration file is `router-config`.

Use the **boot host** command along with the **service config** command. Without the **service config** command, the router ignores the **boot host** command and uses the configuration information in NVRAM. If the configuration information in NVRAM is invalid or missing, the **service config** command is enabled automatically. The network server will attempt to load two configuration files from remote hosts. The first is the network configuration file containing commands that apply to all network servers on a network. Use the **boot network** command to identify the network configuration file. The second is the host configuration file that contains commands that apply to one network server in particular. Use the **boot host** command to identify the host configuration file.

The client sends out a broadcast in spite of the fact that the option 150 is configured because of its default nature to look out for the TFTP server and the Option 150 is defined on the server side not the client side. Other than TFTP, 150 option is also available for these:

- 150 Etherboot
- 150 GRUB configuration path name

The DHCP options can be configured with the **option code ascii string tftp-server-name** command. If you do not have the name of the server and if the server is configured only with the IP address, then use the **option code ip ip address** command.

## Verify

This section provides information you can use in order to confirm your configuration works properly.

Certain **show** commands are supported by the Output Interpreter Tool (registered customers only), which allows you to view an analysis of **show** command output.

- **show ip dhcp import** Displays the option parameters imported into the DHCP server database.

```
Remote#show ip dhcp import
Address Pool Name: Client
Domain Name Server(s): 10.0.0.2
NetBIOS Name Server(s): 10.0.0.2
Domain Name Option: Central
```

- **show ip dhcp server statistics** Displays DHCP server statistics.

```
Central#show ip dhcp server statistics
Memory usage          13906
Address pools         1
Database agents       1
Automatic bindings    1
Manual bindings       0
Expired bindings      0
Malformed messages    0

Message               Received
BOOTREQUEST           0
DHCPDISCOVER         1
DHCPREQUEST          1
DHCPDECLINE           0
DHCPRELEASE           0
DHCPINFORM            0

Message               Sent
BOOTREPLY              0
DHCPOFFER            1
DHCPACK              1
DHCPNAK                0
```

- **show ip dhcp binding** Displays address bindings on the Cisco IOSDHCP server.

```
Central#show ip dhcp binding
IP address             Client-ID/Hardware address      Lease expiration           Type
10.0.0.6               0063.6973.636f.2d30.           Apr 25 2005 12:30 AM      Autom
```

## Troubleshoot

This section provides information you can use to troubleshoot your configuration.

### Troubleshooting Commands

**Note:** Before you issue **debug** commands, refer to Important Information on Debug Commands.

- **debug ip dhcp server packet** Decodes DHCP receptions and transmissions.

The output taken from a PC or Client with a Microsoft Windows Operating system with the **ipconfig /all** command gives the TCP/IP configuration values configured by DHCP. Refer to RFC 2132 for more information on DHCP options.

```
C:\>ipconfig /all

Windows 2000 IP Configuration
```

Host Name . . . . . : PC  
Primary DNS Suffix . . . . . : cisco.com  
Node Type . . . . . : Hybrid  
IP Routing Enabled. . . . . : No  
WINS Proxy Enabled. . . . . : No  
DNS Suffix Search List. . . . . : cisco.com

Ethernet adapter Local Area Connection :

Connection-specific DNS Suffix . : Central  
Description . . . . . : 3Com EtherLink XL 10/100 PCI TX NIC(3C905B-TX)  
Physical Address. . . . . : 00-10-5A-86-5A-CA  
DHCP Enabled. . . . . : Yes  
Autoconfiguration Enabled . . . : Yes  
**IP Address. . . . . : 192.168.1.2**  
**Subnet Mask . . . . . : 255.255.255.248**  
**Default Gateway . . . . . : 192.168.1.1**  
**DHCP Server . . . . . : 10.0.0.6**  
**DNS Servers . . . . . : 10.0.0.2**  
**Primary WINS Server . . . . . : 10.0.0.2**  
Lease Obtained. . . . . : Tuesday, April 26, 2005 6:04:29 PM  
Lease Expires . . . . . : Wednesday, April 27, 2005 6:04:29 PM

---

## Related Information

- [DHCP Server Options Import and Autoconfiguration](#)
- [AutoInstall Using DHCP for LAN Interfaces](#)
- [Configuring WINS, DNS and DHCP on Access Servers](#)
- [Using the Cisco IOS DHCP Server on Access Servers](#)
- [Configuring DHCP](#)
- [DHCP Commands](#)
- [Cisco IOS DHCP Server](#)
- [Dynamic Address Allocation and Resolution – Cisco Systems](#)
- [IP Technology Support Page](#)
- [Technical Support & Documentation – Cisco Systems](#)

---

[Contacts & Feedback](#) | [Help](#) | [Site Map](#)

© 2007 – 2008 Cisco Systems, Inc. All rights reserved. [Terms & Conditions](#) | [Privacy Statement](#) | [Cookie Policy](#) | [Trademarks of Cisco Systems, Inc.](#)

---

Updated: Oct 12, 2005

Document ID: 22920

---