

# Configuring IPsec Between a Cisco IOS Router and a Cisco VPN Client 4.x for Windows Using RADIUS for User Authentication

Document ID: 21060

---

## Introduction

### Prerequisites

- Requirements
- Components Used
- Conventions

### Configure

- Network Diagram
- Configure the 2621XM Router

### RADIUS Server Configuration

- Configure the RADIUS Server for User Authentication
- VPN Client 4.8 Configuration
- Enabling Split Tunneling
- Configure RADIUS Server Fallback Feature

### Verify

### Troubleshoot

- Troubleshooting Commands
- Debug Output

### Related Information

---

## Introduction

This document demonstrates how to configure a connection between a router and the Cisco VPN Client 4.x using Remote Authentication Dial-In User Service (RADIUS) for user authentication. Cisco IOS® Software Releases 12.2(8)T and later support connections from Cisco VPN Client 4.x. The VPN Clients 3.x and 4.x use Diffie Hellman (DH) group 2 policy. The **isakmp policy # group 2** command enables the VPN Clients to connect.

This document shows authentication on the RADIUS server, and authorization (such as assigning the Windows Internet Naming Service (WINS) and Domain Naming Service (DNS)) locally by the router. If you are interested in doing both authentication and authorization through the RADIUS server, refer to [Configuring IPsec Between a Cisco IOS Router and a Cisco VPN Client 4.x for Windows Using RADIUS](#).

**Note:** IPsec VPN Accounting is now available. Refer to [IPsec VPN Accounting](#) for more information and sample configurations.

Refer to [IPsec Tunnel Between IOS Router and Cisco VPN Client 4.x for Windows with TACACS+ User Authentication Configuration Example](#) for more information about the scenario where the user authentication occurs externally with TACACS+ protocol.

Refer to [Configuring Cisco VPN Client 3.x for Windows to IOS Using Local Extended Authentication](#) for more information about the scenario where the user authentication occurs locally in the Cisco IOS router.

Refer to [PIX/ASA 7.x and Cisco VPN Client 4.x for Windows with Microsoft Windows 2003 IAS RADIUS Authentication Configuration Example](#) for information on how to set up the remote access VPN connection

between a Cisco VPN Client (4.x for Windows) and the PIX 500 Series Security Appliance 7.x using a Microsoft Windows 2003 Internet Authentication Service (IAS) RADIUS server.

Refer to IPsec – PIX to VPN Client Wild-card, Pre-shared, Mode Configuration with Extended Authentication for information on how to connect a VPN Client to a PIX Firewall using wildcards, mode-config, the **sysopt connection permit-ipsec** command, and extended authentication (Xauth).

Refer to IPsec Between a VPN 3000 Concentrator and a VPN Client 4.x for Windows using RADIUS for User Authentication and Accounting Configuration Example for information on how to establish an IPsec tunnel between a Cisco VPN 3000 Concentrator and a Cisco VPN Client 4.x for Windows using RADIUS for user authentication and accounting.

## Prerequisites

### Requirements

Ensure that you meet these requirements before you attempt this configuration:

- A pool of addresses to be assigned for IPsec
- A group called "3000clients" with a password of "cisco123"
- User authentication on a RADIUS server

### Components Used

The information in this document is based on these software and hardware versions:

- A 2621XM Router that runs Cisco IOS Software Release 12.2(15)T2
- CiscoSecure ACS for Windows 2000 version 4.2 (any RADIUS server should work)
- Cisco VPN Client for Windows version 4.8 (any VPN Client 4.x and later should work)

The information in this document was created from the devices in a specific lab environment. All of the devices used in this document started with a cleared (default) configuration. If your network is live, make sure that you understand the potential impact of any command.

This is output from the **show version** command on the router:

```
vpn2621#show version
Cisco Internetwork Operating System Software
IOS (tm) C2600 Software (C2600-IK9S-M), Version 12.2(15)T2,  RELEASE SOFTWARE (fc2)
TAC Support: http://www.cisco.com/tac
Copyright (c) 1986-2003 by cisco Systems, Inc.
Compiled Thu 01-May-03 10:39 by nmasa
Image text-base: 0x80008098, data-base: 0x81BBB0BC

ROM: System Bootstrap, Version 12.2(7r) [cmong 7r], RELEASE SOFTWARE (fc1)

vpn2621 uptime is 1 hour, 34 minutes
System returned to ROM by reload
System image file is "flash:c2600-ik9s-mz.122-15.T2.bin"
```

This product contains cryptographic features and is subject to United States and local country laws governing import, export, transfer and use. Delivery of Cisco cryptographic products does not imply third-party authority to import, export, distribute or use encryption. Importers, exporters, distributors and users are responsible for compliance with U.S. and local country laws. By using this product you

agree to comply with applicable laws and regulations. If you are unable to comply with U.S. and local laws, return this product immediately.

A summary of U.S. laws governing Cisco cryptographic products may be found at: <http://www.cisco.com/wwl/export/crypto/tool/stqrg.html>

If you require further assistance please contact us by sending email to [export@cisco.com](mailto:export@cisco.com).

```
cisco 2621XM (MPC860P) processor (revision 0x100) with 125952K/5120K bytes of memory.
Processor board ID JAD064503FK (64188517)
M860 processor: part number 5, mask 2
Bridging software.
X.25 software, Version 3.0.0.
2 FastEthernet/IEEE 802.3 interface(s)
2 Serial(sync/async) network interface(s)
1 terminal line(s)
1 Virtual Private Network (VPN) Module(s)
1 cisco content engine(s)
32K bytes of non-volatile configuration memory.
32768K bytes of processor board System flash (Read/Write)
```

Configuration register is 0x2102

## Conventions

Refer to Cisco Technical Tips Conventions for more information on document conventions.

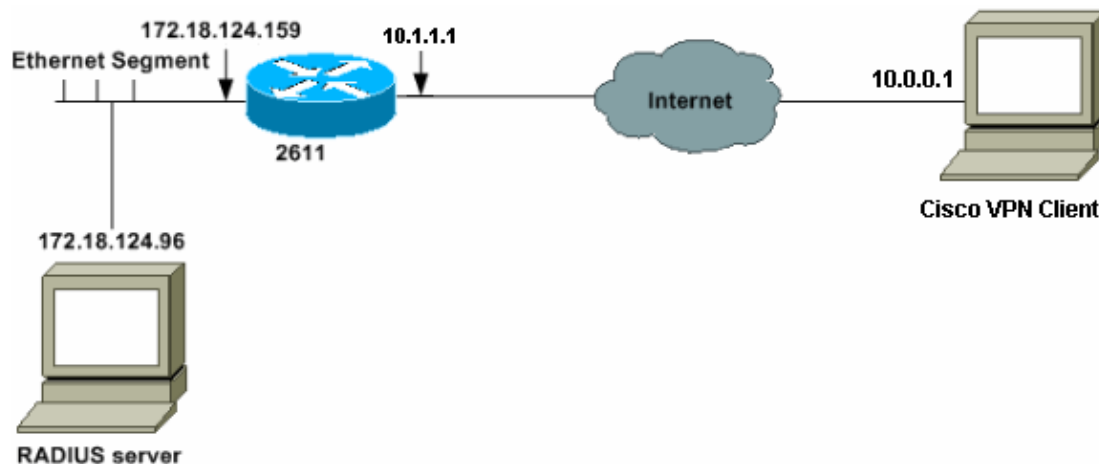
## Configure

In this section, you are presented with the information to configure the features described in this document.

**Note:** Use the Command Lookup Tool ( registered customers only) to find more information on the commands used in this document.

## Network Diagram

This document uses this network setup:



## Configure the 2621XM Router

### 2621XM Router

```
!--- Enable authentication, authorization and accounting (AAA)
!--- for user authentication and group authorization.

aaa new-model
!

!--- In order to enable extended authentication (Xauth) for user authentication,
!--- enable the aaa authentication commands.
!--- "Group radius local" specifies RADIUS user authentication
!--- to be used by default and to use local database if RADIUS server is not reachable.

aaa authentication login userauthen group radius local

!--- In order to enable group authorization,
!--- enable the aaa authorization commands.

aaa authorization network groupauthor local

!--- Create an Internet Security Association and
!--- Key Management Protocol (ISAKMP) policy for Phase 1 negotiations.

crypto isakmp policy 3
encr 3des
authentication pre-share
group 2
!

!--- Create a group that will be used to specify the
!--- Windows Internet Naming Service (WINS) and Domain Naming Service (DNS) server
!--- addresses to the client, along with the pre-shared key for authentication.

crypto isakmp client configuration group 3000client
key cisco123
dns 10.1.1.10
wins 10.1.1.20
domain cisco.com
pool ippool
!

!--- Create the Phase 2 policy for actual data encryption.

crypto ipsec transform-set myset esp-3des esp-sha-hmac
!

!--- Create a dynamic map and
!--- apply the transform set that was created.

crypto dynamic-map dynmap 10
set transform-set myset
!

!--- Create the actual crypto map,
!--- and apply the AAA lists that were created earlier.

crypto map clientmap client authentication list userauthen
crypto map clientmap isakmp authorization list groupauthor
```

```

crypto map clientmap client configuration address respond
crypto map clientmap 10 ipsec-isakmp dynamic dynmap

!--- Apply the crypto map on the outside interface.

interface Ethernet0/0
ip address 10.1.1.1 255.255.255.0
 half-duplex
 crypto map clientmap
interface Ethernet0/1

ip address 172.18.124.159 255.255.255.0
 half-duplex
!

!--- Create a pool of addresses to be assigned to the VPN Clients.

ip local pool ippool 10.16.20.1 10.16.20.200
ip classless
ip route 0.0.0.0 0.0.0.0 10.1.1.2
ip http server
ip pim bidir-enable
!
!
!

!--- Specify the IP address of the RADIUS server,
!--- along with the RADIUS shared secret key.

radius-server host 172.18.124.96 auth-port 1645 acct-port 1646 key cisco123
radius-server retransmit 3

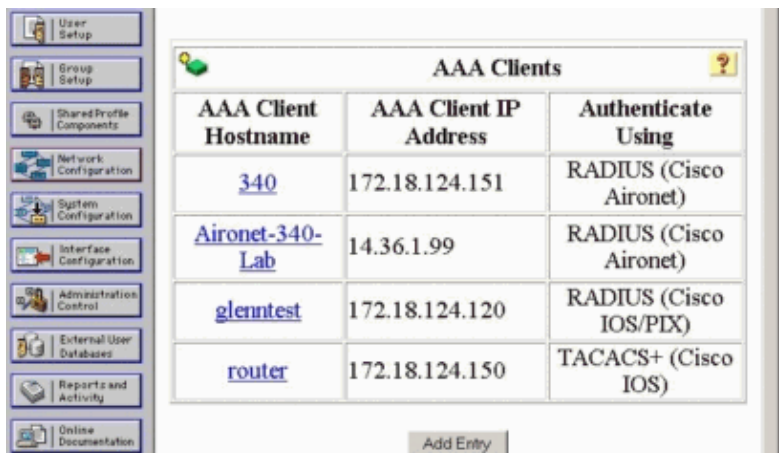
```

## RADIUS Server Configuration

### Configure the RADIUS Server for User Authentication

Complete these steps in order to configure the RADIUS server:

1. Add an Entry for the router in the RADIUS server database.



| AAA Client Hostname             | AAA Client IP Address | Authenticate Using     |
|---------------------------------|-----------------------|------------------------|
| <a href="#">340</a>             | 172.18.124.151        | RADIUS (Cisco Aironet) |
| <a href="#">Aironet-340-Lab</a> | 14.36.1.99            | RADIUS (Cisco Aironet) |
| <a href="#">glenntest</a>       | 172.18.124.120        | RADIUS (Cisco IOS/PIX) |
| <a href="#">router</a>          | 172.18.124.150        | TACACS+ (Cisco IOS)    |

- [Network Device Groups](#)
- [Adding a Network Device Group](#)
- [Renaming a Network Device Group](#)
- [Deleting a Network Device Group](#)
- [AAA Clients](#)
- [Adding a AAA Client](#)
- [Editing a AAA Client](#)
- [Deleting a AAA Client](#)
- [AAA Servers](#)
- [Adding a AAA Server](#)
- [Editing a AAA Server](#)
- [Deleting a AAA Server](#)
- [Proxy Distribution Table](#)
- [Adding a Proxy Distribution Table Entry](#)
- [Sorting Proxy Distribution Table Entries](#)

2. Specify the IP address of the router "172.18.124.159", along with the shared secret key "cisco123". Choose **RADIUS** in the Authenticate Using drop-down box.

**Add AAA Client**

AAA Client Hostname:

AAA Client IP Address:

Key:

Authenticate Using:

Single Connect TACACS+ AAA Client (Record stop in accounting on failure).

Log Update/Watchdog Packets from this AAA Client

Log RADIUS Tunneling Packets from this AAA Client

Submit Submit + Restart Cancel

- [AAA Client Hostname](#)
- [AAA Client IP Address](#)
- [Key](#)
- [Network Device Group](#)
- [Authenticate Using](#)
- [Single Connect TACACS+ AAA Client](#)
- [Log Update/Watchdog Packets from this AAA Client](#)
- [Log RADIUS Tunneling Packets from this AAA Client](#)

**AAA Client Hostname**

The AAA Client Hostname is the name assigned to the AAA client.

[\[Back to Top\]](#)

**AAA Client IP Address**

3. Add the Username for the VPN user in the CiscoSecure database. In the example, the username is cisco.

User:

Find Add/Edit

List users beginning with letter/number:

|   |   |   |   |   |   |   |   |   |   |   |   |   |
|---|---|---|---|---|---|---|---|---|---|---|---|---|
| A | B | C | D | E | F | G | H | I | J | K | L | M |
| N | O | P | Q | R | S | T | U | V | W | X | Y | Z |
| 0 | 1 | 2 | 3 | 4 | 5 | 6 | 7 | 8 | 9 |   |   |   |

List All Users

Back to Help

- [User Setup and External User Databases](#)
- [Finding a Specific User in the CiscoSecure User Database](#)
- [Adding a User to the CiscoSecure User Database](#)
- [Listing Usernames that Begin with a Particular Character](#)
- [Listing All Usernames in the CiscoSecure User Database](#)
- [Changing a Username in the CiscoSecure User Database](#)

User Setup enables you to configure individual user information, add users, and delete users in the database.

4. On the next window, specify the password for the user cisco. In this example, the password is also cisco. You can map the user account to a group. Once you have finished, click **Submit**.

**Supplementary User Info**

Real Name:

Description:

**User Setup**

Password Authentication:

CiscoSecure PAP (Also used for CHAP/MS-CHAP/ARAP, if the Separate field is not checked.)

Password:

Confirm Password:

Separate (CHAP/MS-CHAP/ARAP)

Password:

Confirm Password:

When using a Token Card server for authentication, supplying a separate CHAP password for a token card user allows CHAP authentication. This is especially useful when token caching is enabled.

Group to which the user is assigned:

Submit Cancel

- [Account Disabled](#)
- [Deleting a Username](#)
- [Supplementary User Info](#)
- [Password Authentication](#)
- [Group to which the user is assigned](#)
- [Callback](#)
- [Client IP Address Assignment](#)
- [Advanced Settings](#)
- [Network Access Restrictions](#)
- [Max Sessions](#)
- [Usage Quotas](#)
- [Account Disable](#)
- [Downloadable ACLs](#)
- [Advanced TACACS+ Settings](#)
- [TACACS+ Enable Control](#)
- [TACACS+ Enable Password](#)
- [TACACS+ Outbound Password](#)
- [TACACS+ Shell Command Authorization](#)
- [TACACS+ Unknown Services](#)
- [IETF RADIUS Attributes](#)
- [RADIUS Vendor-Specific Attributes](#)

**Account Disabled Status**

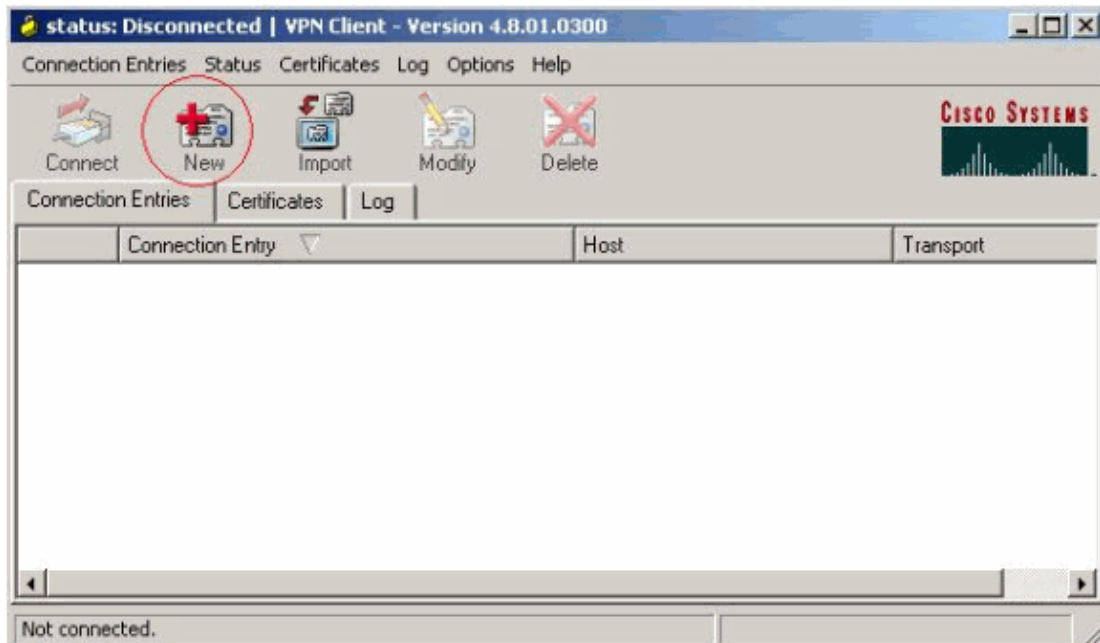
Select the Account Disabled check box to disable this account; clear the check box to enable the account.

[\[Back to Top\]](#)

## VPN Client 4.8 Configuration

Complete these steps in order to configure the VPN Client 4.8:

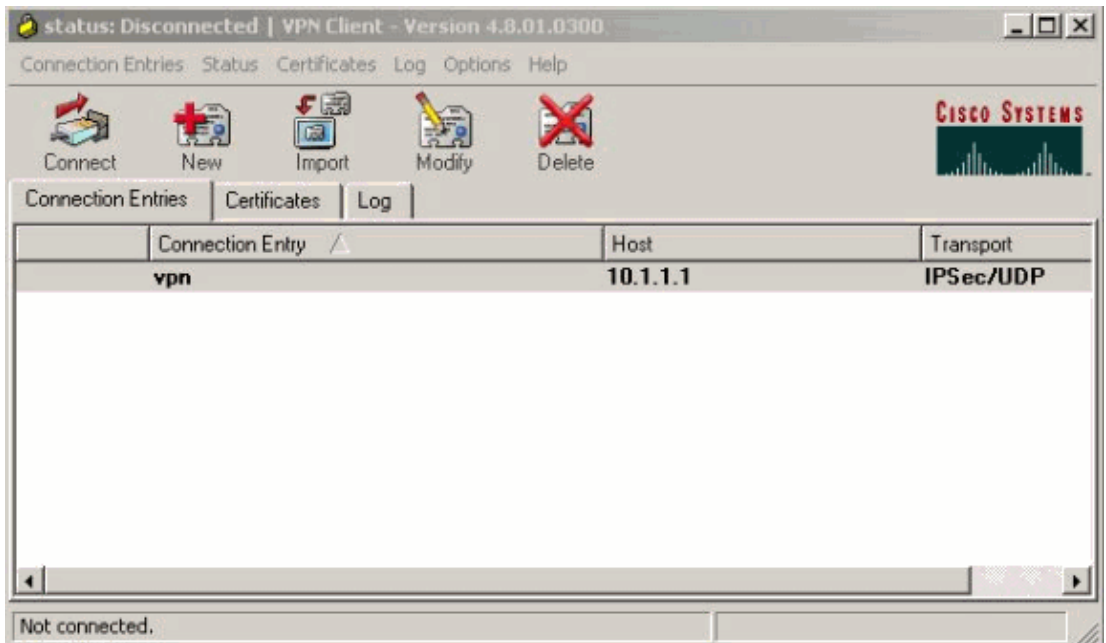
1. Choose **Start > Programs > Cisco Systems VPN Client > VPN Client**.
2. Click **New** to launch the Create New VPN Connection Entry window.



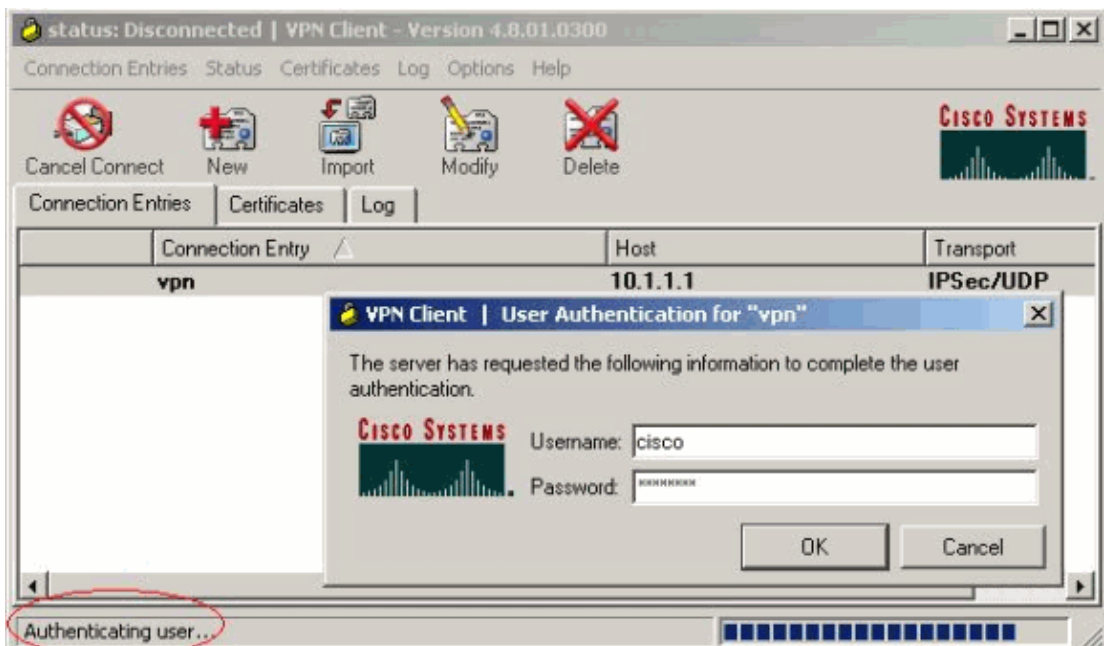
3. Enter the name of the Connection Entry along with a description. Enter the outside IP address of the router in the Host box. Then enter the VPN Group name and password and click **Save**.



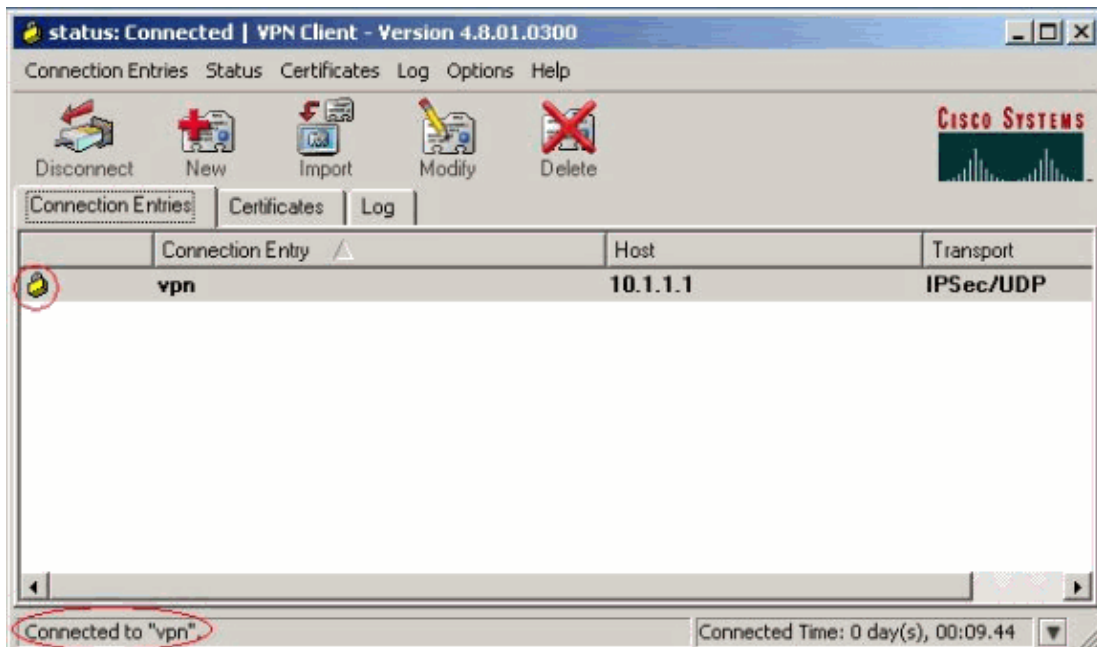
4. Click on the connection you would like to use and click **Connect** from the VPN Client main window.



5. When prompted, enter the Username and Password information for xauth and click **OK** to connect to the remote network.



The VPN Client gets connected with the router at the central site.



## Enabling Split Tunneling

In order to enable split tunneling for the VPN connections, make sure that you have an access control list (ACL) configured on the router. In this example, the **access-list 108** command is associated with the group for split-tunneling purposes, and the tunnel is formed to the 14.38.X.X /16 network. Traffic flows unencrypted to devices not in ACL 108 (for example, the Internet).

```
access-list 108 permit ip 172.18.124.0 0.0.255.255 10.16.20.0 0.0.0.255
```

Apply the ACL on the group properties.

```
crypto isakmp client configuration group 3000client
key cisco123
dns 10.1.1.10
wins 10.1.1.20
domain cisco.com
pool ippool
acl 108
```

## Configure RADIUS Server Fallback Feature

When the primary RADIUS server becomes unavailable, the router will failover to the next active backup RADIUS server. The router will continue to use the secondary RADIUS server forever, even if the primary server is available. Usually the primary server is high performance and the preferred server. If the secondary server is not available, the local database can be used for authentication using the **aaa authentication login userauthen group radius local** command.

## Verify

Use this section to confirm that your configuration works properly.

The Output Interpreter Tool (registered customers only) (OIT) supports certain **show** commands. Use the OIT to view an analysis of **show** command output.

This is output from relevant **show** commands:

vpn2621#show crypto isakmp sa

| dst      | src | state              | conn-id | slot |
|----------|-----|--------------------|---------|------|
| 10.1.1.1 |     | <del>QM_IDLE</del> | 3       | 0    |

vpn2621#show crypto ipsec sa interface: Ethernet0/0

Crypto map tag: clientmap, local addr. 10.1.1.1

local ident (addr/mask/prot/port): (10.1.1.1/255.255.255.255/0/0)  
remote ident (addr/mask/prot/port): (10.16.20.2/255.255.255.255/0/0)

**current\_peer: 10.0.0.1**

PERMIT, flags={}

**#pkts encaps: 5, #pkts encrypt: 5, #pkts digest 5**

**#pkts decaps: 5, #pkts decrypt: 5, #pkts verify 5**

#pkts compressed: 0, #pkts decompressed: 0

#pkts not compressed: 0, #pkts compr. failed: 0, #pkts decompress failed: 0

#send errors 0, #recv errors 0

local crypto endpt.: 10.1.1.1, remote crypto endpt.: 10.0.0.1

path mtu 1500, media mtu 1500

current outbound spi: 77AFCCFA

inbound esp sas:

spi: 0xC7AC22AB(3349947051)

transform: esp-3des esp-sha-hmac ,

in use settings ={Tunnel, }

slot: 0, conn id: 2000, flow\_id: 1, crypto map: clientmap

sa timing: remaining key lifetime (k/sec): (4608000/3444)

IV size: 8 bytes

replay detection support: Y

inbound ah sas:

inbound pcg sas:

outbound esp sas:

spi: 0x77AFCCFA(2008009978)

transform: esp-3des esp-sha-hmac ,

in use settings ={Tunnel, }

slot: 0, conn id: 2001, flow\_id: 2, crypto map: clientmap

sa timing: remaining key lifetime (k/sec): (4608000/3444)

IV size: 8 bytes

replay detection support: Y

outbound ah sas:

outbound pcg sas:

local ident (addr/mask/prot/port): (172.18.124.0/255.255.255.0/0/0)

remote ident (addr/mask/prot/port): (10.16.20.2/255.255.255.255/0/0)

**current\_peer: 10.0.0.1**

PERMIT, flags={}

**#pkts encaps: 4, #pkts encrypt: 4, #pkts digest 4**

**#pkts decaps: 6, #pkts decrypt: 6, #pkts verify 6**

#pkts compressed: 0, #pkts decompressed: 0

#pkts not compressed: 0, #pkts compr. failed: 0, #pkts decompress failed: 0

#send errors 0, #recv errors 0

local crypto endpt.: 10.1.1.1, remote crypto endpt.: 10.0.0.1

path mtu 1500, media mtu 1500

current outbound spi: 2EE5BF09

inbound esp sas:

spi: 0x3565451F(895829279)

transform: esp-3des esp-sha-hmac ,

```

in use settings ={Tunnel, }
slot: 0, conn id: 2002, flow_id: 3, crypto map: clientmap
sa timing: remaining key lifetime (k/sec): (4607999/3469)
IV size: 8 bytes
replay detection support: Y

inbound ah sas:

inbound pcp sas:

outbound esp sas:
spi: 0x2EE5BF09(786808585)
transform: esp-3des esp-sha-hmac ,
in use settings ={Tunnel, }
slot: 0, conn id: 2003, flow_id: 4, crypto map: clientmap
sa timing: remaining key lifetime (k/sec): (4607999/3469)
IV size: 8 bytes
replay detection support: Y

outbound ah sas:

outbound pcp sas:

```

vpn2621#show crypto engine connections active

| ID   | Interface   | IP-Address | State | Algorithm          | Encrypt | Decrypt |
|------|-------------|------------|-------|--------------------|---------|---------|
| 3    | Ethernet0/0 | 10.1.1.1   | set   | HMAC_SHA+3DES_56_C | 0       | 0       |
| 2000 | Ethernet0/0 | 10.1.1.1   | set   | HMAC_SHA+3DES_56_C | 0       | 5       |
| 2001 | Ethernet0/0 | 10.1.1.1   | set   | HMAC_SHA+3DES_56_C | 5       | 0       |
| 2002 | Ethernet0/0 | 10.1.1.1   | set   | HMAC_SHA+3DES_56_C | 0       | 6       |
| 2003 | Ethernet0/0 | 10.1.1.1   | set   | HMAC_SHA+3DES_56_C | 4       | 0       |

vpn2621#show crypto engine accelerator statistic

Virtual Private Network (VPN) Module in aim slot : 0

Statistics for Hardware VPN Module since the last clear

of counters 5570 seconds ago

|                              |                             |                     |
|------------------------------|-----------------------------|---------------------|
| 14 packets in                | 14 packets out              |                     |
| 0 packet overruns            | 0 output packets dropped    |                     |
| 0 packets decompressed       | 0 packets compressed        |                     |
| 0 compressed bytes in        | 0 uncompressed bytes in     |                     |
| 0 decompressed bytes out     | 0 compressed bytes out      |                     |
| 0 packets bypass compression | 0 packets abort compression |                     |
| 0 packets fail decompression | 0 packets fail compression  |                     |
| 7 packets decrypted          | 7 packets encrypted         |                     |
| 532 bytes decrypted          | 532 bytes encrypted         |                     |
| 784 bytes before decrypt     | 19200 bytes after encrypt   |                     |
| 0 paks/sec in                | 0 paks/sec out              |                     |
| 0 Kbits/sec decrypted        | 0 Kbits/sec encrypted       |                     |
| Last 5 minutes:              |                             |                     |
| 14 packets in                | 14 packets out              |                     |
| 7 packets decrypted          | 7 packets encrypted         |                     |
| 532 bytes decrypted          | 420 bytes encrypted         |                     |
| 784 bytes before decrypt     | 672 bytes after encrypt     |                     |
| 0 paks/sec in                | 0 paks/sec out              |                     |
| 0 Kbits/sec decrypted        | 0 Kbits/sec encrypted       |                     |
| rx_no_endp: 0                | rx_hi_discards: 0           | fw_failure: 0       |
| invalid_sa: 0                | invalid_flow: 0             | cgx_errors: 0       |
| fw_qs_filled: 0              | fw_resource_lock: 0         | lotx_full_err: 0    |
| null_ip_error: 0             | pad_size_error: 0           | out_bound_dh_acc: 0 |
| esp_auth_fail: 0             | ah_auth_failure: 0          | crypto_pad_error: 0 |
| ah_prot_absent: 0            | ah_seq_failure: 0           | ah_spi_failure: 0   |

```

esp_prot_absent:      0  esp_seq_fail:      0  esp_spi_failure:    0
obound_sa_acc:       0  invalid_sa:         0  out_bound_sa_flow:  0
invalid_dh:          0  bad_keygroup:       0  out_of_memory:      0
no_sh_secret:        0  no_keys:            0  invalid_cmd:        0
dsp_coproc_err:     0  comp_unsupported:   0  pak_too_big:        0
null packets:        0
pak_mp_length_spec_fault: 0 cmd queue errors:  0
tx_lo_queue_size_max 0 cmd_unimplemented: 0
Interrupts:         439 Immed:            0  HiPri ints:         14
LoPri ints:         425 POST Errs:            0  Alerts:             0
Unk Cmds:           0  UnexpCmds:         0
cgx_cmd_pending:0   packet_loop_max: 0packet_loop_limit: 0
vpn2621#sh crypto engine configuration

```

```

crypto engine name: Virtual Private Network (VPN) Module
crypto engine type: hardware

```

```

Product Name: AIM-VPN/BP
Configuration: 0x000109010F00F00784000000
                : 0x995FB1441BA279D5BD46CF6C
                : 0xECE77614C30835CB0A000300
                : 0x00000000000000000000000000000000
CryptIC Version: 001.000
CGX Version:    001.009
CGX Reserved:   0x000F
PCDB info:     0x07F0 0x0084 0x0000
Serial Number: 0x5F9944B1A21BD57946BD
                : 0x6CCFE7EC14768C3CB35
DSP firmware version: 000.010
DSP Bootstrap Version: 000.003
DSP Bootstrap Info:  0x0000

Compression: Yes
DES: Yes
3 DES: Yes
AES CBC: No
AES CNTR: No
Maximum buffer length: 4096
Maximum DH index: 0210
Maximum SA index: 0420
Maximum Flow index: 0840
Maximum RSA key size: 0000
crypto engine in slot: 0
platform: VPN hardware accelerator

```

```

Crypto Adjacency Counts:
Lock Count: 0
Unlock Count: 0
crypto lib version: 16.0.0
ipsec lib version: 2.0.0

```

## Troubleshoot

Use this section to troubleshoot your configuration.

## Troubleshooting Commands

The Output Interpreter Tool (registered customers only) (OIT) supports certain **show** commands. Use the OIT to view an analysis of **show** command output.

**Note:** Refer to Important Information on Debug Commands before you use **debug** commands.

- **debug crypto ipsec** Displays debug information about IPSec connections.
- **debug crypto isakmp** Displays debug information about IPSec connections, and shows the first set of attributes that is denied due to incompatibilities on both ends.
- **debug crypto engine** Displays information from the crypto engine.
- **debug aaa authentication** Displays information on AAA/Terminal Access Controller Access Control System Plus (TACACS+) authentication.
- **debug aaa authorization radius** Displays information on AAA/TACACS+ authorization.
- **debug radius** Displays information on troubleshooting communication between the RADIUS server and the router.

## Debug Output

This section provides debug information from the router that you can use to troubleshoot your configuration.

### Router Logs

```
vpn2621#show debug
```

```
General OS:
```

```
  AAA Authentication debugging is on
```

```
  AAA Authorization debugging is on
```

```
Radius protocol debugging is on
```

```
Radius packet protocol debugging is on
```

```
Cryptographic Subsystem:
```

```
  Crypto ISAKMP debugging is on
```

```
  Crypto Engine debugging is on
```

```
  Crypto IPSEC debugging is on
```

```
vpn2621#
```

```
*ISAKMP (0:0): received packet from 10.0.0.1 dport 500 sport 500 Global (N) NEW SA
```

```
*ISAKMP: Created a peer struct for 10.0.0.1, peer port 500
```

```
*ISAKMP: Locking peer struct 0x83166B20, IKE refcount 1 for
```

```
  crypto_ikmp_config_initialize_sa
```

```
*ISAKMP (0:0): Setting client config settings 82F0F82C
```

```
*ISAKMP (0:0): (Re)Setting client xauth list and state
```

```
*ISAKMP: local port 500, remote port 500
```

```
*ISAKMP: insert sa successfully sa = 83165694
```

```
*ISAKMP (0:1): processing SA payload. message ID = 0
```

```
*ISAKMP (0:1): processing ID payload. message ID = 0
```

```
*ISAKMP (0:1): peer matches *none* of the profiles
```

```
*ISAKMP (0:1): processing vendor id payload
```

```
*ISAKMP (0:1): vendor ID seems Unity/DPD but major 215 mismatch
```

```
*ISAKMP (0:1): vendor ID is XAUTH
```

```
*ISAKMP (0:1): processing vendor id payload
```

```
*ISAKMP (0:1): vendor ID is DPD
```

```
*ISAKMP (0:1): processing vendor id payload
```

```
*ISAKMP (0:1): vendor ID seems Unity/DPD but major 123 mismatch
```

```
*ISAKMP (0:1): vendor ID is NAT-T v2
```

```
*ISAKMP (0:1): processing vendor id payload
```

```
*ISAKMP (0:1): vendor ID seems Unity/DPD but major 194 mismatch
```

```
*ISAKMP (0:1): processing vendor id payload
```

```
*ISAKMP (0:1): vendor ID is Unity
```

```
*ISAKMP (0:1) Authentication by xauth preshared
```

```
*ISAKMP (0:1): Checking ISAKMP transform 1 against priority 3 policy
```

```
*ISAKMP: encryption AES-CBC
```

```
*ISAKMP: hash SHA
```

```
*ISAKMP: default group 2
```

```
*ISAKMP: auth XAUTHInitPreShared
```

```
*ISAKMP: life type in seconds
```

```
*ISAKMP:      life duration (VPI) of  0x0 0x20 0xC4 0x9B
*ISAKMP:      keylength of 256
*ISAKMP (0:1): Encryption algorithm offered does not match policy!
/en/US/docs/net_mgmt/wan_service_administrator/1.1/administrator/guide/getstart.html
-snip/en/US/docs/net_mgmt/wan_service_administrator/1.1/administrator/guide/getstart.html
/en/US/docs/net_mgmt/wan_service_administrator/1.1/administrator/guide/getstart.html
/en/US/docs/net_mgmt/wan_service_administrator/1.1/administrator/guide/getstart.html
```

```
!--- ISAKMP values are acceptable and then the router continues with the
!--- ISAKMP negotiation process.
```

```
*ISAKMP (0:1): Checking ISAKMP transform 9 against priority 3 policy
*ISAKMP:      encryption 3DES-CBC
*ISAKMP:      hash SHA
*ISAKMP:      default group 2
*ISAKMP:      auth XAUTHInitPreShared
*ISAKMP:      life type in seconds
*ISAKMP:      life duration (VPI) of  0x0 0x20 0xC4 0x9B
*ISAKMP (0:1): atts are acceptable. Next payload is 3
*CryptoEngine0: generate alg parameter
*CryptoEngine0: CRYPTO_ISA_DH_CREATE(hw)(ipsec)
*CRYPTO_ENGINE: Dh phase 1 status: 0
*ISAKMP (0:1): processing KE payload. message ID = 0
*CryptoEngine0: generate alg parameter
*CryptoEngine0: CRYPTO_ISA_DH_SHARE_SECRET(hw)(ipsec)
*ISAKMP (0:1): processing NONCE payload. message ID = 0
*ISAKMP (0:1): vendor ID is NAT-T v2
*AAA: parse name=ISAKMP-ID-AUTH idb type=-1 tty=-1
*AAA/MEMORY: create_user (0x830E12E8) user='3000client' ruser='NULL' ds0=0
port='ISAKMP-ID-AUTH' rem_addr='10.0.0.1' authen_type=NONE service=LOGIN
priv=0 initial_task_id='0', vrf= (id=0)
*ISAKMP (0:1): Input = IKE_MSG_FROM_PEER, IKE_AM_EXCH
*ISAKMP (0:1): Old State = IKE_READY  New State = IKE_R_AM_AAA_AWAIT

*ISAKMP-ID-AUTH AAA/AUTHOR/CRYPTO AAA(54534875): Port='ISAKMP-ID-AUTH'
list='groupauthor' service=NET
*AAA/AUTHOR/CRYPTO AAA: ISAKMP-ID-AUTH(54534875) user='3000client'
*ISAKMP-ID-AUTH AAA/AUTHOR/CRYPTO AAA(54534875): send AV service=ike
*ISAKMP-ID-AUTH AAA/AUTHOR/CRYPTO AAA(54534875): send AV protocol=ipsec
*ISAKMP-ID-AUTH AAA/AUTHOR/CRYPTO AAA(54534875): found list "groupauthor"
*ISAKMP-ID-AUTH AAA/AUTHOR/CRYPTO AAA(54534875): Method=LOCAL
*AAA/AUTHOR (54534875): Post authorization status = PASS_ADD
*ISAKMP: got callback 1
*
AAA/AUTHOR/IKE: Processing AV service=ike
*
AAA/AUTHOR/IKE: Processing AV protocol=ipsec
*
AAA/AUTHOR/IKE: Processing AV tunnel-password=cisco123
*
AAA/AUTHOR/IKE: Processing AV default-domain*cisco.com
*
AAA/AUTHOR/IKE: Processing AV addr-pool*ippool
*
AAA/AUTHOR/IKE: Processing AV key-exchange=ike
*
AAA/AUTHOR/IKE: Processing AV group-lock*0
*
AAA/AUTHOR/IKE: Processing AV timeout*0
*
AAA/AUTHOR/IKE: Processing AV idletime*0
*
AAA/AUTHOR/IKE: Processing AV inacl*108
*
AAA/AUTHOR/IKE: Processing AV dns-servers*10.1.1.10 0.0.0.0
```

```

*
AAA/AUTHOR/IKE: Processing AV wins-servers*10.1.1.20 0.0.0.0
*CryptoEngine0: create ISAKMP SKEYID for conn id 1
*CryptoEngine0: CRYPTO_ISA_SA_CREATE(hw)(ipsec)
*ISAKMP (0:1): SKEYID state generated
*ISAKMP (0:1): constructed NAT-T vendor-02 ID
*ISAKMP (0:1): SA is doing pre-shared key authentication plus XAUTH using
      id type ID_IPV4_ADDR
*ISAKMP (1): ID payload
      next-payload : 10
      type          : 1
      addr          : 10.1.1.1
      protocol      : 17
      port          : 0
      length        : 8
*ISAKMP (1): Toine0: CRYPTO_ISA_IKE_DECRYPT(hw)(ipsec)
*ISAKMP (0:1): processing HASH payload. message ID = 0
*CryptoEngine0: generate hmac context for conn id 1
*CryptoEngine0: CRYPTO_ISA_IKE_HMAC(hw)(ipsec)tal payload length: 12
*CryptoEngine0: generate hmac conte
*ISAKMP (0:1): processing NOTIFY_INITIAL_CONTACT protocol 1
      spi 0, message ID = 0, sa = 83165694
*ISAKMP (0:1): Process initial contact,
bring down existing phase 1 and 2 SA's with local 10.1.1.1 remote
10.0.0.1 remote port 500
*ISAKMP (0:1): returning IP addr to the address pool
*ISAKMP:received payload type 17
*ISAKMP (0:1): Detected NAT-D payload
*ISAKMP (0:1): recalc my hash for NAT-D
*ISAKMP (0:1): NAT match MINE hash
*ISAKMP:received payload type 17xt for conn id 1
*CryptoEngine0: CRYPTO_ISA_IKE_HMAC(hw)(ipsec)
*ISAKMP (0:1): constructed HIS NAT-D
*ISAKMP (0:1): constructed MINE NAT-D
*ISAKMP (0:1): sending packet to 10.0.0.1 my_port 500 peer_port 500 (R) AG_INIT_EXCH
*ISAKMP (0:1): Input = IKE_MESG_FROM_AAA, PRESHARED_KEY_REPLY
*ISAKMP (0:1): Old State = IKE_R_AM_AAA_AWAIT New State = IKE_R_AM2

*AAA/MEMORY: free_user (0x830E12E8) user='3000client' ruser='NULL' port='ISAKMP-ID-AUTH'
      rem_addr='10.0.0.1' authen_type=NONE service=LOGIN priv=0 vrf= (id=0)
*ISAKMP (0:1): received packet from 10.0.0.1 dport 500 sport 500 Global (R) AG_INIT_EXCH
*CryptoEng
*ISAKMP (0:1): Detected NAT-D payload
*ISAKMP (0:1): recalc his hash for NAT-D
*ISAKMP (0:1): NAT match HIS hash
*ISAKMP (0:1): SA has been authenticated with 10.0.0.1
*CryptoEngine0: clear dh number for conn id 1
*ISAKMP: Trying to insert a peer 10.0.0.1/500/, and inserted successfully.
*ISAKMP (0:1): IKE_DPD is enabled, initializing timers
*ISAKMP: set new node 2011892843 to CONF_XAUTH
*CryptoEngine0: generate hmac context for conn id 1
*CryptoEngine0: CRYPTO_ISA_IKE_HMAC(hw)(ipsec)
*IPSEC(key_engine): got a queue event...
*CryptoEngine0: CRYPTO_ISA_DH_DELETE(hw)(ipsec)
*CryptoEngine0: CRYPTO_ISA_IKE_ENCRYPT(hw)(ipsec)
*ISAKMP (0:1): sending packet to 10.0.0.1 my_port 500 peer_port 500 (R) QM_IDLE
*ISAKMP (0:1): purging node 2011892843
*ISAKMP: Sending phase 1 responder lifetime 86400

*ISAKMP (0:1): peer matches *none* of the profiles
*ISAKMP (0:1): Input = IKE_MESG_FROM_PEER, IKE_AM_EXCH
*ISAKMP (0:1): Old State = IKE_R_AM2 New State = IKE_P1_COMPLETE

*ISAKMP (0:1): Need XAUTH
*AAA: parse name=ISAKMP idb type=-1 tty=-1
*AAA/MEMORY: create_user (0x830DE43C) user='NULL' ruser='NULL' ds0=0 port='ISAKMP'

```

```
rem_addr='10.0.0.1' authen_type=ASCII service=LOGIN priv=0 initial_task_id='0',
vrf= (id=0)
*ISAKMP (0:1): Input = IKE_MSG_INTERNAL, IKE_PHASE1_COMPLETE
*ISAKMP (0:1): Old State = IKE_P1_COMPLETE New State = IKE_XAUTH_AAA_START_LOGIN_AWAIT

*AAA/AUTHEN/START (992119247): port='ISAKMP' list='userauthen' action=LOGIN service=LOGIN
*AAA/AUTHEN/START (992119247): found list userauthen
*AAA/AUTHEN/START (992119247): Method=radius (radius)
*AAA/AUTHEN(992119247): Status=GETUSER
*ISAKMP: got callback 1
*ISAKMP: set new node -883516238 to CONF_XAUTH
*ISAKMP/xauth: request attribute XAUTH_USER_NAME_V2
*ISAKMP/xauth: request attribute XAUTH_USER_PASSWORD_V2
*CryptoEngine0: generate hmac context for conn id 1
*CryptoEngine0: CRYPTO_ISA_IKE_HMAC(hw)(ipsec)
*ISAKMP (0:1): initiating peer config to 10.0.0.1. ID = -883516238
*CryptoEngine0: CRYPTO_ISA_IKE_ENCRYPT(hw)(ipsec)
*ISAKMP (0:1): sending packet to 10.0.0.1 my_port 500 peer_port 500 (R) CONF_XAUTH
*ISAKMP (0:1): Input = IKE_MSG_FROM_AAA, IKE_AAA_START_LOGIN
*ISAKMP (0:1): Old State = IKE_XAUTH_AAA_START_LOGIN_AWAIT New State = IKE_XAUTH_REQ_SENT

*ISAKMP (0:1): retransmitting phase 2 CONF_XAUTH -883516238 ...
*ISAKMP (0:1): incrementing error counter on sa: retransmit phase 2
*ISAKMP (0:1): incrementing error counter on sa: retransmit phase 2
*ISAKMP (0:1): retransmitting phase 2 -883516238 CONF_XAUTH
*ISAKMP (0:1): sending packet to 10.0.0.1 my_port 500 peer_port 500 (R) CONF_XAUTH
*ISAKMP (0:1): received packet from 10.0.0.1 dport 500 sport 500 Global (R) CONF_XAUTH
*CryptoEngine0: CRYPTO_ISA_IKE_DECRYPT(hw)(ipsec)
*ISAKMP (0:1): processing transaction payload from 10.0.0.1. message ID = -883516238
*CryptoEngine0: generate hmac context for conn id 1
*CryptoEngine0: CRYPTO_ISA_IKE_HMAC(hw)(ipsec)
*ISAKMP: Config payload REPLY
*ISAKMP/xauth: reply attribute XAUTH_USER_NAME_V2
*ISAKMP/xauth: reply attribute XAUTH_USER_PASSWORD_V2
*ISAKMP (0:1): deleting node -883516238 error FALSE reason
"done with xauth request/reply exchange"
*ISAKMP (0:1): Input = IKE_MSG_FROM_PEER, IKE_CFG_REPLY
*ISAKMP (0:1): Old State = IKE_XAUTH_REQ_SENT New State = IKE_XAUTH_AAA_CONT_LOGIN_AWAIT

*AAA/AUTHEN/CONT (992119247): continue_login (user='(undef)')
*AAA/AUTHEN(992119247): Status=GETUSER
*AAA/AUTHEN(992119247): Method=radius (radius)
*AAA/AUTHEN(992119247): Status=GETPASS
*AAA/AUTHEN/CONT (992119247): continue_login (user='cisco')
*AAA/AUTHEN(992119247): Status=GETPASS
*AAA/AUTHEN(992119247): Method=radius (radius)
*RADIUS: Pick NAS IP for u=0x830DE43C tableid=0 cfg_addr=0.0.0.0 best_addr=10.1.1.1
*RADIUS: ustruct sharecount=2
*Radius: radius_port_info() success=0 radius_nas_port=1
*RADIUS(00000000): Send Access-Request to 172.18.124.96:1645 id 21645/4, len 72
*RADIUS: authenticator F2 7F ED 86 2B D9 80 1F - 74 D7 8F 90 3B EF F0 D5
*RADIUS: NAS-IP-Address [4] 6 10.1.1.1
*RADIUS: NAS-Port-Type [61] 6 Async [0]
*RADIUS: User-Name [1] 9 "cisco"
*RADIUS: Calling-Station-Id [31] 13 "10.0.0.1"
*RADIUS: User-Password [2] 18 *
*RADIUS: Retransmit to (172.18.124.96:1645,1646) for id 21645/4
*RADIUS: Received from id 21645/4 172.18.124.96:1645, Access-Accept, len 62
*RADIUS: authenticator 97 DF CB C8 74 AC 92 D6 - 3B D8 D9 DC 9E 85 94 35
*RADIUS: Framed-IP-Address [8] 6 172.17.8.123
*RADIUS: Class [25] 36
*RADIUS: 43 49 53 43 4F 41 43 53 3A 30 30 30 30 31 38 32 [CISCOACS:0000182]
*RADIUS: 62 2F 61 63 31 32 37 63 39 66 2F 74 6E 65 75 62 [b/ac127c9f/cisco]
*RADIUS: 65 72
*RADIUS: saved authorization data for user 830DE43C at 830DB5FC
*AAA/AUTHEN(992119247): Status=PASS
```

```

*ISAKMP: got callback 1
*ISAKMP: set new node -1874799558 to CONF_XAUTH
*CryptoEngine0: generate hmac context for conn id 1
*CryptoEngine0: CRYPTO_ISA_IKE_HMAC(hw)(ipsec)
*ISAKMP (0:1): initiating peer config to 10.0.0.1. ID = -1874799558
*CryptoEngine0: CRYPTO_ISA_IKE_ENCRYPT(hw)(ipsec)
*ISAKMP (0:1): sending packet to 10.0.0.1 my_port 500 peer_port 500 (R) CONF_XAUTH
*ISAKMP (0:1): Input = IKE_MSG_FROM_AAA, IKE_AAA_CONT_LOGIN
*ISAKMP (0:1): Old State = IKE_XAUTH_AAA_CONT_LOGIN_AWAIT New State = IKE_XAUTH_SET_SENT

*AAA/MEMORY: free_user (0x830DE43C) user='cisco' ruser='NULL' port='ISAKMP'
rem_addr='10.0.0.1' authen_type=ASCII service=LOGIN priv=0 vrf= (id=0)
*ISAKMP (0:1): received packet from 10.0.0.1 dport 500 sport 500 Global (R) CONF_XAUTH
*CryptoEngine0: CRYPTO_ISA_IKE_DECRYPT(hw)(ipsec)
*ISAKMP (0:1): processing transaction payload from 10.0.0.1. message ID = -1874799558
*CryptoEngine0: generate hmac context for conn id 1
*CryptoEngine0: CRYPTO_ISA_IKE_HMAC(hw)(ipsec)
*ISAKMP: Config payload ACK
*ISAKMP (0:1): XAUTH ACK Processed
*ISAKMP (0:1): deleting node -1874799558 error FALSE reason "done with transaction"
*ISAKMP (0:1): Input = IKE_MSG_FROM_PEER, IKE_CFG_ACK
*ISAKMP (0:1): Old State = IKE_XAUTH_SET_SENT New State = IKE_P1_COMPLETE

*ISAKMP (0:1): Input = IKE_MSG_INTERNAL, IKE_PHASE1_COMPLETE
*ISAKMP (0:1): Old State = IKE_P1_COMPLETE New State = IKE_P1_COMPLETE

*ISAKMP (0:1): received packet from 10.0.0.1 dport 500 sport 500 Global (R) QM_IDLE
*ISAKMP: set new node -1474156599 to QM_IDLE
*CryptoEngine0: CRYPTO_ISA_IKE_DECRYPT(hw)(ipsec)
*ISAKMP (0:1): processing transaction payload from 10.0.0.1. message ID = -1474156599
*CryptoEngine0: generate hmac context for conn id 1
*CryptoEngine0: CRYPTO_ISA_IKE_HMAC(hw)(ipsec)
*ISAKMP: Config payload REQUEST
*ISAKMP (0:1): checking request:
*ISAKMP: IP4_ADDRESS
*ISAKMP: IP4_NETMASK
*ISAKMP: IP4_DNS
*ISAKMP: IP4_NBNS
*ISAKMP: ADDRESS_EXPIRY
*ISAKMP: APPLICATION_VERSION
*ISAKMP: UNKNOWN Unknown Attr: 0x7000
*ISAKMP: UNKNOWN Unknown Attr: 0x7001
*ISAKMP: DEFAULT_DOMAIN
*ISAKMP: SPLIT_INCLUDE
*ISAKMP: UNKNOWN Unknown Attr: 0x7003
*ISAKMP: UNKNOWN Unknown Attr: 0x7007
*ISAKMP: UNKNOWN Unknown Attr: 0x7008
*ISAKMP: UNKNOWN Unknown Attr: 0x7009
*ISAKMP: UNKNOWN Unknown Attr: 0x700A
*ISAKMP: UNKNOWN Unknown Attr: 0x7005
*AAA: parse name=ISAKMP-GROUP-AUTH idb type=-1 tty=-1
*AAA/MEMORY: create_user (0x831663A0) user='3000client' ruser='NULL' ds0=0
port='ISAKMP-GROUP-AUTH' rem_addr='10.0.0.1' authen_type=NONE service=LOGIN
priv=0 initial_task_id='0', vrf= (id=0)
*ISAKMP (0:1): Input = IKE_MSG_FROM_PEER, IKE_CFG_REQUEST
*ISAKMP (0:1): Old State = IKE_P1_COMPLETE New State = IKE_CONFIG_AUTHOR_AAA_AWAIT

*ISAKMP-GROUP-AUTH AAA/AUTHOR/CRYPTO AAA(3136771130): Port='ISAKMP-GROUP-AUTH'
list='groupauthor' service=NET
*AAA/AUTHOR/CRYPTO AAA: ISAKMP-GROUP-AUTH(3136771130) user='3000client'
*ISAKMP-GROUP-AUTH AAA/AUTHOR/CRYPTO AAA(3136771130): send AV service=ike
*ISAKMP-GROUP-AUTH AAA/AUTHOR/CRYPTO AAA(3136771130): send AV protocol=ipsec
*ISAKMP-GROUP-AUTH AAA/AUTHOR/CRYPTO AAA(3136771130): found list "groupauthor"
*ISAKMP-GROUP-AUTH AAA/AUTHOR/CRYPTO AAA(3136771130): Method=LOCAL
*AAA/AUTHOR (3136771130): Post authorization status = PASS_ADD
*ISAKMP: got callback 1

```

```
* AAA/AUTHOR/IKE: Processing AV service=ike
* AAA/AUTHOR/IKE: Processing AV protocol=ipsec
*
AAA/AUTHOR/IKE: Processing AV tunnel-password=cisco123
*
AAA/AUTHOR/IKE: Processing AV default-domain*cisco.com
*
AAA/AUTHOR/IKE: Processing AV addr-pool*ippool
*
AAA/AUTHOR/IKE: Processing AV key-exchange=ike
*
AAA/AUTHOR/IKE: Processing AV group-lock*0
*
AAA/AUTHOR/IKE: Processing AV timeout*0
*
AAA/AUTHOR/IKE: Processing AV idletime*0
*
AAA/AUTHOR/IKE: Processing AV inacl*108
*
AAA/AUTHOR/IKE: Processing AV dns-servers*10.1.1.10 0.0.0.0
*
AAA/AUTHOR/IKE: Processing AV wins-servers*10.1.1.20 0.0.0.0
*ISAKMP (0:1): attributes sent in message:
*   Address: 0.2.0.0
*ISAKMP (0:1): allocating address 10.16.20.1
*ISAKMP: Sending private address: 10.16.20.1
*ISAKMP: Sending IP4_DNS server address: 10.1.1.10
*ISAKMP: Sending IP4_NBNS server address: 10.1.1.20
*ISAKMP: Sending ADDRESS_EXPIRY seconds left to use the address: 86388
*ISAKMP: Sending APPLICATION_VERSION string: Cisco Internetwork Operating System Software
IOS (tm) C2600 Software (C2600-IK9S-M), Version 12.2(15)T2, RELEASE SOFTWARE (fc2)
TAC Support: http://www.cisco.com/tac
Copyright (c) 1986-2003 by cisco Systems, Inc.
Compiled Thu 01-May-03 10:39 by nmasa
*ISAKMP (0/1): Unknown Attr: UNKNOWN (0x7000)
*ISAKMP (0/1): Unknown Attr: UNKNOWN (0x7001)
*ISAKMP: Sending DEFAULT_DOMAIN default domain name: cisco.com
*ISAKMP: Sending split include name 108 network 172.18.124.0 mask 255.255.255.0
protocol 0, src port 0, dst port 0

*ISAKMP (0/1): Unknown Attr: UNKNOWN (0x7003)
*ISAKMP (0/1): Unknown Attr: UNKNOWN (0x7007)
*ISAKMP (0/1): Unknown Attr: UNKNOWN (0x7008)
*ISAKMP (0/1): Unknown Attr: UNKNOWN (0x7009)
*ISAKMP (0/1): Unknown Attr: UNKNOWN (0x700A)
*ISAKMP (0/1): Unknown Attr: UNKNOWN (0x7005)
*CryptoEngine0: generate hmac context for conn id 1
*CryptoEngine0: CRYPTO_ISA_IKE_HMAC(hw)(ipsec)
*ISAKMP (0:1): responding to peer config from 10.0.0.1. ID = -1474156599
*CryptoEngi*ISAKMP (0:1): deleting node -1474156599 error FALSE reason
  "ne0: CRYPTO_ISA_IKE_ENCRYPT(hw)(ipsec)
*ISAKMP (0:1): sending packet to 10.0.0.1 my_por231
*ISAKMP (0:1): processing SA payload. message ID = 2058744231
*ISAKMP (0:1): Checking IPSec proposal 1
*ISAKMP: transform 1, ESP_AES
*ISAKMP:   attributes in transform:
*ISAKMP:     authenticator is HMAC-MD5
*ISAKMP:     encaps is 1
*ISAKMP:     key length is 256t 500 peer_port 500 (R) CONF_ADDR

*ISAKMP (0:1): Input = IKE_MESG_FROM_AAA, IKE_AAA_GROUP_ATTR
*ISAKMP (0:1): Old State = IKE_CONFIG_AUTHOR_AAA_AWAIT New State = IKE_P1_COMPLETE

*AAA/MEMORY: free_user (0x831663A0) user='3000client' ruser='NULL' port='ISAKMP-GROUP-AUTH
rem_addr='10.0.0.1' authen_type=NONE service=LOGIN priv=0 vrf= (id=0)
*ISAKMP (0:1): received packet from 10.0.0.1 dport 500 sport 500 Global (R) QM_IDLE
```

```
*ISAKMP: set new node 2058744231 to QM_IDLE
*CryptoEngine0: CRYPTO_ISA_IKE_DECRYPT(hw)(ipsec)
*CryptoEngine0: generate hmac context for conn id 1
*CryptoEngine0: CRYPTO_ISA_IKE_HMAC(hw)(ipsec)
*ISAKMP (0:1): processing HASH payload. message ID = 2058744
*ISAKMP: SA life type in seconds
*ISAKMP: SA life duration (VPI) of 0x0 0x20 0xC4 0x9B
*CryptoEngine0: validate proposal
*ISAKMP (0:1): atts are acceptable.
*ISAKMP (0:1): Checking IPsec proposal 1
*ISAKMP (0:1): transform 1, IPPCP LZS
*ISAKMP: attributes in transform:
*ISAKMP: encaps is 1
*ISAKMP: SA life type in seconds
*ISAKMP: SA life duration (VPI) of 0x0 0x20 0xC4 0x9B
*ISAKMP (0:1): atts are acceptable.
*IPSEC(validate_proposal_request): proposal part #1,
(key eng. msg.) INBOUND local= 10.1.1.1, remote= 10.0.0.1,
local_proxy= 10.1.1.1/255.255.255.255/0/0 (type=1),
remote_proxy= 10.16.20.1/255.255.255.255/0/0 (type=1),
protocol= ESP, transform= esp-aes 256 esp-md5-hmac ,
lifedur= 0s and 0kb,
spi= 0x0(0), conn_id= 0, keysize= 256, flags= 0x2
*IPSEC(validate_proposal_request): proposal part #2,
(key eng. msg.) INBOUND local= 10.1.1.1, remote= 10.0.0.1,
local_proxy= 10.1.1.1/255.255.255.255/0/0 (type=1),
remote_proxy= 10.16.20.1/255.255.255.255/0/0 (type=1),
protocol= PCP, transform= comp-lzs ,
lifedur= 0s and 0kb,
spi= 0x0(0), conn_id= 0, keysize= 0, flags= 0x2
*CryptoEngine0: validate proposal request
*IPSEC(kei_proxy): head = clientmap, map->ivrf = , kei->ivrf =
*IPSEC(validate_transform_proposal): transform proposal not supported for identity:
{esp-aes 256 esp-md5-hmac comp-lzs }
*ISAKMP (0:1): IPsec policy invalidated proposal
*ISAKMP (0:1): Checking IPsec proposal 2
*ISAKMP: transform 1, ESP_AES
*ISAKMP: attributes in transform:
*ISAKMP: authenticator is HMAC-SHA
*ISAKMP: encaps is 1
*ISAKMP: key length is 256
*ISAKMP: SA life type in seconds
*ISAKMP: SA life duration (VPI) of 0x0 0x20 0xC4 0x9B
*CryptoEngine0: validate proposal
*ISAKMP (0:1): atts are acceptable.
*ISAKMP (0:1): Checking IPsec proposal 2
*ISAKMP (0:1): transform 1, IPPCP LZS
*ISAKMP: attributes in transform:
*ISAKMP: encaps is 1
*ISAKMP: SA life type in seconds
*ISAKMP: SA life duration (VPI) of 0x0 0x20 0xC4 0x9B
*ISAKMP (0:1): atts are acceptable.
*IPSEC(validate_proposal_request): proposal part #1,
(key eng. msg.) INBOUND local= 10.1.1.1, remote= 10.0.0.1,
local_proxy= 10.1.1.1/255.255.255.255/0/0 (type=1),
remote_proxy= 10.16.20.1/255.255.255.255/0/0 (type=1),
protocol= ESP, transform= esp-aes 256 esp-sha-hmac ,
lifedur= 0s and 0kb,
spi= 0x0(0), conn_id= 0, keysize= 256, flags= 0x2
*IPSEC(validate_proposal_request): proposal part #2,
(key eng. msg.) INBOUND local= 10.1.1.1, remote= 10.0.0.1,
local_proxy= 10.1.1.1/255.255.255.255/0/0 (type=1),
remote_proxy= 10.16.20.1/255.255.255.255/0/0 (type=1),
protocol= PCP, transform= comp-lzs ,
lifedur= 0s and 0kb,
spi= 0x0(0), conn_id= 0, keysize= 0, flags= 0x2
```

```
*CryptoEngine0: validate proposal request
*IPSEC(kei_proxy): head = clientmap, map->ivrf = , kei->ivrf =
*IPSEC(validate_transform_proposal): transform proposal not supported for identity:
    {esp-aes 256 esp-sha-hmac comp-lzs }
*ISAKMP (0:1): IPSec policy invalidated proposal
*ISAKMP (0:1): Checking IPSec proposal 3
*ISAKMP: transform 1, ESP_AES
*ISAKMP:   attributes in transform:
*ISAKMP:     authenticator is HMAC-MD5
*ISAKMP:     encaps is 1
*ISAKMP:     key length is 128
*ISAKMP:     SA life type in seconds
*ISAKMP:     SA life duration (VPI) of  0x0 0x20 0xC4 0x9B
*CryptoEngine0: validate proposal
*ISAKMP (0:1): atts are acceptable.
*ISAKMP (0:1): Checking IPSec proposal 3
*ISAKMP (0:1): transform 1, IPPCP LZS
*ISAKMP:   attributes in transform:
*ISAKMP:     encaps is 1
*ISAKMP:     SA life type in seconds
*ISAKMP:     SA life duration (VPI) of  0x0 0x20 0xC4 0x9B
*ISAKMP (0:1): atts are acceptable.
*IPSEC(validate_proposal_request): proposal part #1,
    (key eng. msg.) INBOUND local= 10.1.1.1, remote= 10.0.0.1,
    local_proxy= 10.1.1.1/255.255.255.255/0/0 (type=1),
    remote_proxy= 10.16.20.1/255.255.255.255/0/0 (type=1),
    protocol= ESP, transform= esp-aes esp-md5-hmac ,
    lifedur= 0s and 0kb,
    spi= 0x0(0), conn_id= 0, keysize= 128, flags= 0x2
*IPSEC(validate_proposal_request): proposal part #2,
    (key eng. msg.) INBOUND local= 10.1.1.1, remote= 10.0.0.1,
    local_proxy= 10.1.1.1/255.255.255.255/0/0 (type=1),
    remote_proxy= 10.16.20.1/255.255.255.255/0/0 (type=1),
    protocol= PCP, transform= comp-lzs ,
    lifedur= 0s and 0kb,
    spi= 0x0(0), conn_id= 0, keysize= 0, flags= 0x2
*CryptoEngine0: validate proposal request
*IPSEC(kei_proxy): head = clientmap, map->ivrf = , kei->ivrf =
*IPSEC(validate_transform_proposal): transform proposal not supported for identity:
    {esp-aes esp-md5-hmac comp-lzs }
*ISAKMP (0:1): IPSec policy invalidated proposal
*ISAKMP (0:1): Checking IPSec proposal 4
*ISAKMP: transform 1, ESP_AES
*ISAKMP:   attributes in transform:
*ISAKMP:     authenticator is HMAC-SHA
*ISAKMP:     encaps is 1
*ISAKMP:     key length is 128
*ISAKMP:     SA life type in seconds
*ISAKMP:     SA life duration (VPI) of  0x0 0x20 0xC4 0x9B
*CryptoEngine0: validate proposal
*ISAKMP (0:1): atts are acceptable.
*ISAKMP (0:1): Checking IPSec proposal 4
*ISAKMP (0:1): transform 1, IPPCP LZS
*ISAKMP:   attributes in transform:
*ISAKMP:     encaps is 1
*ISAKMP:     SA life type in seconds
*ISAKMP:     SA life duration (VPI) of  0x0 0x20 0xC4 0x9B
*ISAKMP (0:1): atts are acceptable.
*IPSEC(validate_proposal_request): proposal part #1,
    (key eng. msg.) INBOUND local= 10.1.1.1, remote= 10.0.0.1,
    local_proxy= 10.1.1.1/255.255.255.255/0/0 (type=1),
    remote_proxy= 10.16.20.1/255.255.255.255/0/0 (type=1),
    protocol= ESP, transform= esp-aes esp-sha-hmac ,
    lifedur= 0s and 0kb,
    spi= 0x0(0), conn_id= 0, keysize= 128, flags= 0x2
*IPSEC(validate_proposal_request): proposal part #2,
```

```
(key eng. msg.) INBOUND local= 10.1.1.1, remote= 10.0.0.1,
  local_proxy= 10.1.1.1/255.255.255.255/0/0 (type=1),
  remote_proxy= 10.16.20.1/255.255.255.255/0/0 (type=1),
  protocol= PCP, transform= comp-lzs ,
  lifedur= 0s and 0kb,
  spi= 0x0(0), conn_id= 0, keysize= 0, flags= 0x2
*CryptoEngine0: validate proposal request
*IPSEC(kei_proxy): head = clientmap, map->ivrf = , kei->ivrf =
*IPSEC(validate_transform_proposal): transform proposal not supported for identity:
  {esp-aes esp-sha-hmac comp-lzs }
*ISAKMP (0:1): IPSec policy invalidated proposal
*ISAKMP (0:1): Checking IPSec proposal 5
*ISAKMP: transform 1, ESP_AES
*ISAKMP:   attributes in transform:
*ISAKMP:     authenticator is HMAC-MD5
*ISAKMP:     encaps is 1
*ISAKMP:     key length is 256
*ISAKMP:     SA life type in seconds
*ISAKMP:     SA life duration (VPI) of  0x0 0x20 0xC4 0x9B
*CryptoEngine0: validate proposal
*ISAKMP (0:1): atts are acceptable.
*IPSEC(validate_proposal_request): proposal part #1,
  (key eng. msg.) INBOUND local= 10.1.1.1, remote= 10.0.0.1,
  local_proxy= 10.1.1.1/255.255.255.255/0/0 (type=1),
  remote_proxy= 10.16.20.1/255.255.255.255/0/0 (type=1),
  protocol= ESP, transform= esp-aes 256 esp-md5-hmac ,
  lifedur= 0s and 0kb,
  spi= 0x0(0), conn_id= 0, keysize= 256, flags= 0x2
*CryptoEngine0: validate proposal request
*IPSEC(kei_proxy): head = clientmap, map->ivrf = , kei->ivrf =
*IPSEC(validate_transform_proposal): transform proposal not supported for identity:
  {esp-aes 256 esp-md5-hmac }
*ISAKMP (0:1): IPSec policy invalidated proposal
*ISAKMP (0:1): Checking IPSec proposal 6
*ISAKMP: transform 1, ESP_AES
*ISAKMP:   attributes in transform:
*ISAKMP:     authenticator is HMAC-SHA
*ISAKMP:     encaps is 1
*ISAKMP:     key length is 256
*ISAKMP:     SA life type in seconds
*ISAKMP:     SA life duration (VPI) of  0x0 0x20 0xC4 0x9B
*CryptoEngine0: validate proposal
*ISAKMP (0:1): atts are acceptable.
*IPSEC(validate_proposal_request): proposal part #1,
  (key eng. msg.) INBOUND local= 10.1.1.1, remote= 10.0.0.1,
  local_proxy= 10.1.1.1/255.255.255.255/0/0 (type=1),
  remote_proxy= 10.16.20.1/255.255.255.255/0/0 (type=1),
  protocol= ESP, transform= esp-aes 256 esp-sha-hmac ,
  lifedur= 0s and 0kb,
  spi= 0x0(0), conn_id= 0, keysize= 256, flags= 0x2
*CryptoEngine0: validate proposal request
*IPSEC(kei_proxy): head = clientmap, map->ivrf = , kei->ivrf =
*IPSEC(validate_transform_proposal): transform proposal not supported for identity:
  {esp-aes 256 esp-sha-hmac }
*ISAKMP (0:1): IPSec policy invalidated proposal
*ISAKMP (0:1): Checking IPSec proposal 7
*ISAKMP: transform 1, ESP_AES
*ISAKMP:   attributes in transform:
*ISAKMP:     authenticator is HMAC-MD5
*ISAKMP:     encaps is 1
*ISAKMP:     key length is 128
*ISAKMP:     SA life type in seconds
*ISAKMP:     SA life duration (VPI) of  0x0 0x20 0xC4 0x9B
*CryptoEngine0: validate proposal
*ISAKMP (0:1): atts are acceptable.
*IPSEC(validate_proposal_request): proposal part #1,
```

```
(key eng. msg.) INBOUND local= 10.1.1.1, remote= 10.0.0.1,
  local_proxy= 10.1.1.1/255.255.255.255/0/0 (type=1),
  remote_proxy= 10.16.20.1/255.255.255.255/0/0 (type=1),
  protocol= ESP, transform= esp-aes esp-md5-hmac ,
  lifedur= 0s and 0kb,
  spi= 0x0(0), conn_id= 0, keysize= 128, flags= 0x2
*CryptoEngine0: validate proposal request
*IPSEC(kei_proxy): head = clientmap, map->ivrf = , kei->ivrf =
*IPSEC(validate_transform_proposal): transform proposal not supported for identity:
  {esp-aes esp-md5-hmac }
*ISAKMP (0:1): IPsec policy invalidated proposal
*ISAKMP (0:1): Checking IPsec proposal 8
*ISAKMP: transform 1, ESP_AES
*ISAKMP:   attributes in transform:
*ISAKMP:     authenticator is HMAC-SHA
*ISAKMP:     encaps is 1
*ISAKMP:     key length is 128
*ISAKMP:     SA life type in seconds
*ISAKMP:     SA life duration (VPI) of  0x0 0x20 0xC4 0x9B
*CryptoEngine0: validate proposal
*ISAKMP (0:1): atts are acceptable.
*IPSEC(validate_proposal_request): proposal part #1,
  (key eng. msg.) INBOUND local= 10.1.1.1, remote= 10.0.0.1,
  local_proxy= 10.1.1.1/255.255.255.255/0/0 (type=1),
  remote_proxy= 10.16.20.1/255.255.255.255/0/0 (type=1),
  protocol= ESP, transform= esp-aes esp-sha-hmac ,
  lifedur= 0s and 0kb,
  spi= 0x0(0), conn_id= 0, keysize= 128, flags= 0x2
*CryptoEngine0: validate proposal request
*IPSEC(kei_proxy): head = clientmap, map->ivrf = , kei->ivrf =
*IPSEC(validate_transform_proposal): transform proposal not supported for identity:
  {esp-aes esp-sha-hmac }
*ISAKMP (0:1): IPsec policy invalidated proposal
*ISAKMP (0:1): Checking IPsec proposal 9
*ISAKMP: transform 1, ESP_3DES
*ISAKMP:   attributes in transform:
*ISAKMP:     authenticator is HMAC-MD5
*ISAKMP:     encaps is 1
*ISAKMP:     SA life type in seconds
*ISAKMP:     SA life duration (VPI) of  0x0 0x20 0xC4 0x9B
*CryptoEngine0: validate proposal
*ISAKMP (0:1): atts are acceptable.
*ISAKMP (0:1): Checking IPsec proposal 9
*ISAKMP (0:1): transform 1, IPPCP LZS
*ISAKMP:   attributes in transform:
*ISAKMP:     encaps is 1
*ISAKMP:     SA life type in seconds
*IPSEC(spi_response): getting spi 3233689542 for SA
  from 10.1.1.1 to 10.0.0.1 for prot 3
*ISAKMP: received ke message (2/1)
*CryptoEngine0: generate hmac context for conn id 1
*CryptoEngine0: CRYPTO_ISA_IKE_HMAC(hw)(ipsec)
*CryptoEngine0: CRYPTO_ISA_IKE_ENCRYPT(hw)(ipsec)
*ISAKMP (0:1): sending packet to 10.0.0.1 my_port 500 peer_port 500 (R) QM_IDLE
*ISAKMP (0:1): Node 2058744231, Input = IKE_MSG_FROM_IPSEC, IKE_SPI_REPLY
*ISAKMP (0:1): Old State = IKE_QM_SPI_STARVE New State = IKE_QM_R_QM2
*ISAKMP (0:1): received packet from 10.0.0.1 dport 500 sport 500 Global (R) QM_IDLE
*CryptoEngine0: CRYPTO_ISA_IKE_DECRYPT(hw)(ipsec)
*CryptoEngine0: generate hmac context for conn id 1
*CryptoEngine0: CRYPTO_ISA_IKE_HMAC(hw)(ipsec)
*CryptoEngine0: ipsec allocate flow
*CryptoEngine0: ipsec allocate flow
*CryptoEngine0: CRYPTO_ISA_IPSEC_KEY_CREATE(hw)(ipsec)
*CryptoEngine0: CRYPTO_ISA_IPSEC_KEY_CREATE(hw)(ipsec)
*ISAKMP: Locking peer struct 0x83166B20, IPSEC refcount 1 for for stuff_ke
```

*!--- A matching IPSec policy has been negotiated and authenticated.  
!--- Next, the SA's are set up.*

```
*ISAKMP (0:1): Creating IPSec SAs
*   inbound SA from 10.0.0.1 to 10.1.1.1 (f/i)  0/ 0
    (proxy 10.16.20.1 to 10.1.1.1)
*   has spi 0xC0BE2FC6 and conn_id 420 and flags 2
*   lifetime of 2147483 seconds
*   has client flags 0x0
*   outbound SA from 10.1.1.1 to 10.0.0.1      (f/i)  0/ 0
    (proxy 10.1.1.1 to 10.16.20.1      )
*ISAKMP (0:1): received packet from 10.0.0.1 dport 500 sport 500 Global (R) QM_IDLE
*ISAKMP: set new node 1101355775 to QM_IDLE
*CryptoEngine0: CRYPTO_ISA_IKE_DECRYPT(hw)(ipsec)
*CryptoEngine0: generate hmac context for conn id 1
*CryptoEngine0: CRYPTO_ISA_IKE_HMAC(hw)(ipsec)
*ISAKMP (0:1): processing HASH payload. message ID = 1101355775
*ISAKMP (0:1): processing SA payload. message ID = 1101355775
*ISAKMP (0:1): Checking IPSec proposal 1
*ISAKMP: transform 1, ESP_AES
*ISAKMP:   attributes in transform:
*ISAKMP:     authenticator is HMAC-MD5
*ISAKMP:     encaps is 1
*ISAKMP:     key length is 256
*ISAKMP:     SA life type in seconds
*ISAKMP:     SA life duration (VPI) of  0x0 0x20 0xC4 0x9B
*CryptoEngine0: validate proposal
*ISAKMP (0:1): atts are acceptable.
*ISAKMP (0:1): Checking IPSec proposal 1
*ISAKMP (0:1): transform 1, IPPCP LZS
*ISAKMP:   attributes in transform:
*ISAKMP:     encaps is 1
*ISAKMP:     SA life type in seconds
*ISAKMP:     SA life duration (VPI) of  0x0 0x20 0xC4 0x9B
*ISAKMP (0:1): atts are acceptable.
*IPSEC(validate_proposal_request): proposal part #1,
    (key eng. msg.) INBOUND local= 10.1.1.1, remote= 10.0.0.1,
    local_proxy= 172.18.124.0/255.255.255.0/0/0 (type=4),
    remote_proxy= 10.16.20.1/255.255.255.255/0/0 (type=1),
    protocol= ESP, transform= esp-aes 256 esp-md5-hmac ,
    lifedur= 0s and 0kb,
    spi= 0x0(0), conn_id= 0, keysize= 256, flags= 0x2
*IPSEC(validate_proposal_request): proposal part #2,
    (key eng. msg.) INBOUND local= 10.1.1.1, remote= 10.0.0.1,
    local_proxy= 172.18.124.0/255.255.255.0/0/0 (type=4),
    remote_proxy= 10.16.20.1/255.255.255.255/0/0 (type=1),
    protocol= PCP, transform= comp-lzs ,
    lifedur= 0s and 0kb,
    spi= 0x0(0), conn_id= 0, keysize= 0, flags= 0x2
*CryptoEngine0: validate proposal request
*IPSEC(kei_proxy): head = clientmap, map->ivrf = , kei->ivrf =
*IPSEC(kei_proxy): head = clientmap, map->ivrf = , kei->ivrf =
*IPSEC(validate_transform_proposal): transform proposal not supported for identity:
    {esp-aes 256 esp-md5-hmac comp-lzs }
*ISAKMP (0:1): IPSec policy invalidated proposal
*ISAKMP (0:1): Checking IPSec proposal 2
*ISAKMP: transform 1, ESP_AES
*ISAKMP:   attributes in transform:
*ISAKMP:     authenticator is HMAC-SHA
*ISAKMP:     encaps is 1
*ISAKMP:     key length is 256
*ISAKMP:     SA life type in seconds
*ISAKMP:     SA life duration (VPI) of  0x0 0x20 0xC4 0x9B
*CryptoEngine0: validate proposal
*ISAKMP (0:1): atts are acceptable.
*ISAKMP (0:1): Checking IPSec proposal 2
```

```

*ISAKMP (0:1): transform 1, IPPCP LZS
*ISAKMP:   attributes in transform:
*ISAKMP:     encaps is 1
*ISAKMP:     SA life type in seconds
*ISAKMP:     SA life duration (VPI) of  0x0 0x20 0xC4 0x9B
*ISAKMP (0:1): atts are acceptable.
*IPSEC(validate_proposal_request): proposal part #1,
  (key eng. msg.) INBOUND local= 10.1.1.1, remote= 10.0.0.1,
  local_proxy= 172.18.124.0/255.255.255.0/0/0 (type=4),
  remote_proxy= 10.16.20.1/255.255.255.255/0/0 (type=1),
  protocol= ESP, transform= esp-aes 256 esp-sha-hmac ,
  lifedur= 0s and 0kb,
  spi= 0x0(0), conn_id= 0, keysize= 256, flags= 0x2
*IPSEC(validate_proposal_request): proposal part #2,
  (key eng. msg.) INBOUND local= 10.1.1.1, remote= 10.0.0.1,
  local_proxy= 172.18.124.0/255.255.255.0/0/0 (type=4),
  remote_proxy= 10.16.20.1/255.255.255.255/0/0 (type=1),
  protocol= PCP, transform= comp-lzs ,
  lifedur= 0s and 0kb,
  spi= 0x0(0), conn_id= 0, keysize= 0, flags= 0x2
*CryptoEngine0: validate proposal request
*IPSEC(kei_proxy): head = clientmap, map->ivrf = , kei->ivrf =
*IPSEC(kei_proxy): head = clientmap, map->ivrf = , kei->ivrf =
*IPSEC(validate_transform_proposal): transform proposal not supported for identity:
  {esp-aes 256 esp-sha-hmac comp-lzs }
*ISAKMP (0:1): IPSec policy invalidated proposal
*ISAKMP (0:1): Checking IPSec proposal 3
*ISAKMP: transform 1, ESP_AES
*ISAKMP:   attributes in transform:
*ISAKMP:     authenticator is HMAC-MD5
*ISAKMP:     encaps is 1
*ISAKMP:     key length is 128
*ISAKMP:     SA life type in seconds
*ISAKMP:     SA life duration (VPI) of  0x0 0x20 0xC4 0x9B
*CryptoEngine0: validate proposal
*ISAKMP (0:1): atts are acceptable.
*ISAKMP (0:1): Checking IPSec proposal 3
*ISAKMP (0:1): transform 1, IPPCP LZS
*ISAKMP:   attributes in transform:
*ISAKMP:     encaps is 1
*ISAKMP:     SA life type in seconds
*ISAKMP:     SA life duration (VPI) of  0x0 0x20 0xC4 0x9B
*ISAKMP (0:1): atts are acceptable.
*IPSEC(validate_proposal_request): proposal part #1,
  (key eng. msg.) INBOUND local= 10.1.1.1, remote= 10.0.0.1,
  local_proxy= 172.18.124.0/255.255.255.0/0/0 (type=4),
  remote_proxy= 10.16.20.1/255.255.255.255/0/0 (type=1),
  protocol= ESP, transform= esp-aes esp-md5-hmac ,
  lifedur= 0s and 0kb,
  spi= 0x0(0), conn_id= 0, keysize= 128, flags= 0x2
*IPSEC(validate_proposal_request): proposal part #2,
  (key eng. msg.) INBOUND local= 10.1.1.1, remote= 10.0.0.1,
  local_proxy= 172.18.124.0/255.255.255.0/0/0 (type=4),
  remote_proxy= 10.16.20.1/255.255.255.255/0/0 (type=1),
  protocol= PCP, transform= comp-lzs ,
  lifedur= 0s and 0kb,
  spi= 0x0(0), conn_id= 0, keysize= 0, flags= 0x2
*CryptoEngine0: validate proposal request
*IPSEC(kei_proxy): head = clientmap, map->ivrf = , kei->ivrf =
*IPSEC(kei_proxy): head = clientmap, map->ivrf = , kei->ivrf =
*IPSEC(validate_transform_proposal): transform proposal not supported for identity:
  {esp-aes esp-md5-hmac comp-lzs }
*ISAKMP (0:1): IPSec policy invalidated proposal
*ISAKMP (0:1): Checking IPSec proposal 4
*ISAKMP: transform 1, ESP_AES
*ISAKMP:   attributes in transform:

```

```
*ISAKMP:      authenticator is HMAC-SHA
*ISAKMP:      encaps is 1
*ISAKMP:      key length is 128
*ISAKMP:      SA life type in seconds
*ISAKMP:      SA life duration (VPI) of  0x0 0x20 0xC4 0x9B
*CryptoEngine0: validate proposal
*ISAKMP (0:1): atts are acceptable.
*ISAKMP (0:1): Checking IPsec proposal 4
*ISAKMP (0:1): transform 1, IPPCP LZS
*ISAKMP:      attributes in transform:
*ISAKMP:      encaps is 1
*ISAKMP:      SA life type in seconds
*ISAKMP:      SA life duration (VPI) of  0x0 0x20 0xC4 0x9B
*ISAKMP (0:1): atts are acceptable.
*IPSEC(validate_proposal_request): proposal part #1,
  (key eng. msg.) INBOUND local= 10.1.1.1, remote= 10.0.0.1,
  local_proxy= 172.18.124.0/255.255.255.0/0/0 (type=4),
  remote_proxy= 10.16.20.1/255.255.255.255/0/0 (type=1),
  protocol= ESP, transform= esp-aes esp-sha-hmac ,
  lifedur= 0s and 0kb,
  spi= 0x0(0), conn_id= 0, keysize= 128, flags= 0x2
*IPSEC(validate_proposal_request): proposal part #2,
  (key eng. msg.) INBOUND local= 10.1.1.1, remote= 10.0.0.1,
  local_proxy= 172.18.124.0/255.255.255.0/0/0 (type=4),
  remote_proxy= 10.16.20.1/255.255.255.255/0/0 (type=1),
  protocol= PCP, transform= comp-lzs ,
  lifedur= 0s and 0kb,
  spi= 0x0(0), conn_id= 0, keysize= 0, flags= 0x2
*CryptoEngine0: validate proposal request
*IPSEC(kei_proxy): head = clientmap, map->ivrf = , kei->ivrf =
*IPSEC(kei_proxy): head = clientmap, map->ivrf = , kei->ivrf =
*IPSEC(validate_transform_proposal): transform proposal not supported for identity:
  {esp-aes esp-sha-hmac comp-lzs }
*ISAKMP (0:1): IPsec policy invalidated proposal
*ISAKMP (0:1): Checking IPsec proposal 5
*ISAKMP: transform 1, ESP_AES
*ISAKMP:      attributes in transform:
*ISAKMP:      authenticator is HMAC-MD5
*ISAKMP:      encaps is 1
*ISAKMP:      key length is 256
*ISAKMP:      SA life type in seconds
*ISAKMP:      SA life duration (VPI) of  0x0 0x20 0xC4 0x9B
*CryptoEngine0: validate proposal
*ISAKMP (0:1): atts are acceptable.
*IPSEC(validate_proposal_request): proposal part #1,
  (key eng. msg.) INBOUND local= 10.1.1.1, remote= 10.0.0.1,
  local_proxy= 172.18.124.0/255.255.255.0/0/0 (type=4),
  remote_proxy= 10.16.20.1/255.255.255.255/0/0 (type=1),
  protocol= ESP, transform= esp-aes 256 esp-md5-hmac ,
  lifedur= 0s and 0kb,
  spi= 0x0(0), conn_id= 0, keysize= 256, flags= 0x2
*CryptoEngine0: validate proposal request
*IPSEC(kei_proxy): head = clientmap, map->ivrf = , kei->ivrf =
*IPSEC(kei_proxy): head = clientmap, map->ivrf = , kei->ivrf =
*IPSEC(validate_transform_proposal): transform proposal not supported for identity:
  {esp-aes 256 esp-md5-hmac }
*ISAKMP (0:1): IPsec policy invalidated proposal
*ISAKMP (0:1): Checking IPsec proposal 6
*ISAKMP: transform 1, ESP_AES
*ISAKMP:      attributes in transform:
*ISAKMP:      authenticator is HMAC-SHA
*ISAKMP:      encaps is 1
*ISAKMP:      key length is 256
*ISAKMP:      SA life type in seconds
*ISAKMP:      SA life duration (VPI) of  0x0 0x20 0xC4 0x9B
*CryptoEngine0: validate proposal
```

```
*ISAKMP (0:1): atts are acceptable.
*IPSEC(validate_proposal_request): proposal part #1,
  (key eng. msg.) INBOUND local= 10.1.1.1, remote= 10.0.0.1,
  local_proxy= 172.18.124.0/255.255.255.0/0/0 (type=4),
  remote_proxy= 10.16.20.1/255.255.255.255/0/0 (type=1),
  protocol= ESP, transform= esp-aes 256 esp-sha-hmac ,
  lifedur= 0s and 0kb,
  spi= 0x0(0), conn_id= 0, keysize= 256, flags= 0x2
*CryptoEngine0: validate proposal request
*IPSEC(kei_proxy): head = clientmap, map->ivrf = , kei->ivrf =
*IPSEC(kei_proxy): head = clientmap, map->ivrf = , kei->ivrf =
*IPSEC(validate_transform_proposal): transform proposal not supported for identity:
  {esp-aes 256 esp-sha-hmac }
*ISAKMP (0:1): IPSec policy invalidated proposal
*ISAKMP (0:1): Checking IPSec proposal 7
*ISAKMP: transform 1, ESP_AES
*ISAKMP:   attributes in transform:
*ISAKMP:     authenticator is HMAC-MD5
*ISAKMP:     encaps is 1
*ISAKMP:     key length is 128
*ISAKMP:     SA life type in seconds
*ISAKMP:     SA life duration (VPI) of  0x0 0x20 0xC4 0x9B
*CryptoEngine0: validate proposal
*ISAKMP (0:1): atts are acceptable.
*IPSEC(validate_proposal_request): proposal part #1,
  (key eng. msg.) INBOUND local= 10.1.1.1, remote= 10.0.0.1,
  local_proxy= 172.18.124.0/255.255.255.0/0/0 (type=4),
  remote_proxy= 10.16.20.1/255.255.255.255/0/0 (type=1),
  protocol= ESP, transform= esp-aes esp-md5-hmac ,
  lifedur= 0s and 0kb,
  spi= 0x0(0), conn_id= 0, keysize= 128, flags= 0x2
*CryptoEngine0: validate proposal request
*IPSEC(kei_proxy): head = clientmap, map->ivrf = , kei->ivrf =
*IPSEC(kei_proxy): head = clientmap, map->ivrf = , kei->ivrf =
*IPSEC(validate_transform_proposal): transform proposal not supported for identity:
  {esp-aes esp-md5-hmac }
*ISAKMP (0:1): IPSec policy invalidated proposal
*ISAKMP (0:1): Checking IPSec proposal 8
*ISAKMP: transform 1, ESP_AES
*ISAKMP:   attributes in transform:
*ISAKMP:     authenticator is HMAC-SHA
*ISAKMP:     encaps is 1
*ISAKMP:     key length is 128
*ISAKMP:     SA life type in seconds
*ISAKMP:     SA life duration (VPI) of  0x0 0x20 0xC4 0x9B
*CryptoEngine0: validate proposal
*ISAKMP (0:1): atts are acceptable.
*IPSEC(spi_response): getting spi 3438126624 for SA
  from 10.1.1.1 to 10.0.0.1 for prot 3
*ISAKMP: received ke message (2/1)
*CryptoEngine0: generate hmac context for conn id 1
*CryptoEngine0: CRYPTO_ISA_IKE_HMAC(hw)(ipsec)
*CryptoEngine0: CRYPTO_ISA_IKE_ENCRYPT(hw)(ipsec)
*ISAKMP (0:1): sending packet to 10.0.0.1 my_port 500 peer_port 500 (R) QM_IDLE
*ISAKMP (0:1): Node 1101355775, Input = IKE_MSG_FROM_IPSEC, IKE_SPI_REPLY
*ISAKMP (0:1): Old State = IKE_QM_SPI_STARVE New State = IKE_QM_R_QM2
*ISAKMP (0:1): received packet from 10.0.0.1 dport 500 sport 500 Global (R) QM_IDLE
*CryptoEngine0: CRYPTO_ISA_IKE_DECRYPT(hw)(ipsec)
*CryptoEngine0: generate hmac context for conn id 1
*CryptoEngine0: CRYPTO_ISA_IKE_HMAC(hw)(ipsec)
*CryptoEngine0: ipsec allocate flow
*CryptoEngine0: ipsec allocate flow
*CryptoEngine0: CRYPTO_ISA_IPSEC_KEY_CREATE(hw)(ipsec)
*CryptoEngine0: CRYPTO_ISA_IPSEC_KEY_CREATE(hw)(ipsec)
*ISAKMP: Locking peer struct 0x83166B20, IPSEC refcount 2 for for stuff_ke
*ISAKMP (0:1): Creating IPSec SAs
```

```

*      inbound SA from 10.0.0.1 to 10.1.1.1 (f/i)  0/ 0
      (proxy 10.16.20.1 to 172.18.124.0)
*      has spi 0xCCEDA620 and conn_id 422 and flags 2
*      lifetime of 2147483 seconds
*      has client flags 0x0
*      outbound SA from 10.1.1.1 to 10.0.0.1      (f/i)  0/ 0
      (proxy 172.18.124.0      to 10.16.20.1      )

```

## Client Logs

Launch the LogViewer on the VPN Client in order to view the logs. Make sure that the filter is set to High for all the configured classes. This is a sample log output:

```

1      16:52:27.031  06/18/03  Sev=Info/6      DIALER/0x63300002
Initiating connection.

2      16:52:27.041  06/18/03  Sev=Info/4      CM/0x63100002
Begin connection process

3      16:52:27.051  06/18/03  Sev=Info/4      CM/0x63100004
Establish secure connection using Ethernet

4      16:52:27.051  06/18/03  Sev=Info/4      CM/0x63100024
Attempt connection with server "10.1.1.1"

5      16:52:27.101  06/18/03  Sev=Info/6      IKE/0x6300003B
Attempting to establish a connection with 10.1.1.1.

6      16:52:27.481  06/18/03  Sev=Info/4      IKE/0x63000013
SENDING >>> ISAKMP OAK AG (SA, KE, NON, ID, VID, VID, VID, VID, VID)
      to 10.1.1.1

7      16:52:27.612  06/18/03  Sev=Info/4      IPSEC/0x63700014
Deleted all keys

8      16:52:27.722  06/18/03  Sev=Info/5      IKE/0x6300002F
Received ISAKMP packet: peer = 10.1.1.1

9      16:52:27.722  06/18/03  Sev=Info/4      IKE/0x63000014
RECEIVING <<< ISAKMP OAK AG (SA, VID, VID, VID, VID, VID, KE, ID, NON, HASH, NAT-D, NAT-D)
      from 10.1.1.1

10     16:52:27.722  06/18/03  Sev=Info/5      IKE/0x63000059
Vendor ID payload = 12F5F28C457168A9702D9FE274CC0100

11     16:52:27.722  06/18/03  Sev=Info/5      IKE/0x63000001
Peer is a Cisco-Unity compliant peer

12     16:52:27.722  06/18/03  Sev=Info/5      IKE/0x63000059
Vendor ID payload = AFCAD71368A1F1C96B8696FC77570100

13     16:52:27.722  06/18/03  Sev=Info/5      IKE/0x63000001
Peer supports DPD

14     16:52:27.722  06/18/03  Sev=Info/5      IKE/0x63000059
Vendor ID payload = 4F6CF9393C7749D894C6C92D2131AE04

15     16:52:27.722  06/18/03  Sev=Info/5      IKE/0x63000059
Vendor ID payload = 09002689DFD6B712

16     16:52:27.722  06/18/03  Sev=Info/5      IKE/0x63000001
Peer supports XAUTH

17     16:52:27.722  06/18/03  Sev=Info/5      IKE/0x63000059
Vendor ID payload = 90CB80913EBB696E086381B5EC427B1F

```

18 16:52:27.722 06/18/03 Sev=Info/5 IKE/0x63000001  
Peer supports NAT-T

19 16:52:27.782 06/18/03 Sev=Info/4 IKE/0x63000013  
SENDING >>> ISAKMP OAK AG \*(HASH, NOTIFY:STATUS\_INITIAL\_CONTACT, NAT-D, NAT-D)  
to 10.1.1.1

20 16:52:27.822 06/18/03 Sev=Info/5 IKE/0x6300002F  
Received ISAKMP packet: peer = 10.1.1.1

21 16:52:27.822 06/18/03 Sev=Info/4 IKE/0x63000014  
RECEIVING <<< ISAKMP OAK INFO \*(HASH, NOTIFY:STATUS\_RESP\_LIFETIME)  
from 10.1.1.1

22 16:52:27.822 06/18/03 Sev=Info/5 IKE/0x63000044  
RESPONDER-LIFETIME notify has value of 86400 seconds

23 16:52:27.822 06/18/03 Sev=Info/5 IKE/0x63000046  
This SA has already been alive for 0 seconds, setting expiry to 86400 seconds from now

24 16:52:27.842 06/18/03 Sev=Info/5 IKE/0x6300002F  
Received ISAKMP packet: peer = 10.1.1.1

25 16:52:27.842 06/18/03 Sev=Info/4 IKE/0x63000014  
RECEIVING <<< ISAKMP OAK TRANS \*(HASH, ATTR) from 10.1.1.1

26 16:52:27.842 06/18/03 Sev=Info/4 CM/0x63100015  
Launch xAuth application

27 16:52:32.449 06/18/03 Sev=Info/5 IKE/0x6300002F  
Received ISAKMP packet: peer = 10.1.1.1

28 16:52:32.449 06/18/03 Sev=Info/4 IKE/0x63000014  
RECEIVING <<< ISAKMP OAK TRANS \*(Retransmission) from 10.1.1.1

29 16:52:32.809 06/18/03 Sev=Info/4 CM/0x63100017  
xAuth application returned

30 16:52:32.809 06/18/03 Sev=Info/4 IKE/0x63000013  
SENDING >>> ISAKMP OAK TRANS \*(HASH, ATTR) to 10.1.1.1

31 16:52:37.626 06/18/03 Sev=Info/5 IKE/0x6300002F  
Received ISAKMP packet: peer = 10.1.1.1

32 16:52:37.636 06/18/03 Sev=Info/4 IKE/0x63000014  
RECEIVING <<< ISAKMP OAK TRANS \*(HASH, ATTR) from 10.1.1.1

33 16:52:37.636 06/18/03 Sev=Info/5 IKE/0x63000071  
Automatic NAT Detection Status:  
Remote end is NOT behind a NAT device  
This end is NOT behind a NAT device

34 16:52:37.636 06/18/03 Sev=Info/4 CM/0x6310000E  
Established Phase 1 SA. 1 Phase 1 SA in the system

35 16:52:37.656 06/18/03 Sev=Info/4 IKE/0x63000013  
SENDING >>> ISAKMP OAK TRANS \*(HASH, ATTR) to 10.1.1.1

36 16:52:37.987 06/18/03 Sev=Info/5 IKE/0x6300005D  
Client sending a firewall request to concentrator

37 16:52:37.987 06/18/03 Sev=Info/5 IKE/0x6300005C  
Firewall Policy: Product=Cisco Integrated Client, Capability=  
(Centralized Protection Policy).

38 16:52:38.007 06/18/03 Sev=Info/4 IKE/0x63000013  
SENDING >>> ISAKMP OAK TRANS \*(HASH, ATTR) to 10.1.1.1

39 16:52:38.087 06/18/03 Sev=Info/5 IKE/0x6300002F  
Received ISAKMP packet: peer = 10.1.1.1

40 16:52:38.087 06/18/03 Sev=Info/4 IKE/0x63000014  
RECEIVING <<< ISAKMP OAK TRANS \*(HASH, ATTR) from 10.1.1.1

41 16:52:38.097 06/18/03 Sev=Info/5 IKE/0x63000010  
MODE\_CFG\_REPLY: Attribute = INTERNAL\_IPV4\_ADDRESS: , value = 10.16.20.1

42 16:52:38.097 06/18/03 Sev=Info/5 IKE/0x63000010  
MODE\_CFG\_REPLY: Attribute = INTERNAL\_IPV4\_DNS(1): , value = 10.1.1.10

43 16:52:38.097 06/18/03 Sev=Info/5 IKE/0x63000010  
MODE\_CFG\_REPLY: Attribute = INTERNAL\_IPV4\_NBNS(1) (a.k.a. WINS) : , value = 10.1.1.20

44 16:52:38.097 06/18/03 Sev=Info/5 IKE/0xA3000017  
MODE\_CFG\_REPLY: The received (INTERNAL\_ADDRESS\_EXPIRY) attribute and value (86388)  
is not supported

45 16:52:38.097 06/18/03 Sev=Info/5 IKE/0x6300000E  
MODE\_CFG\_REPLY: Attribute = APPLICATION\_VERSION, value = Cisco Internetwork  
Operating System Software IOS (tm) C2600 Software (C2600-IK9S-M), Version 12.2(15)T2,  
RELEASE SOFTWARE (fc2)  
TAC Support: <http://www.cisco.com/tac>  
Copyright (c) 1986-2003 by cisco Systems, Inc.  
Compiled Thu 01-May-03 10:39 by nmasa

46 16:52:38.097 06/18/03 Sev=Info/5 IKE/0x6300000E  
MODE\_CFG\_REPLY: Attribute = MODECFG\_UNITY\_DEFDOMAIN: , value = cisco.com

47 16:52:38.097 06/18/03 Sev=Info/5 IKE/0x6300000D  
MODE\_CFG\_REPLY: Attribute = MODECFG\_UNITY\_SPLIT\_INCLUDE (# of split\_nets),  
value = 0x00000001

48 16:52:38.097 06/18/03 Sev=Info/5 IKE/0x6300000F  
SPLIT\_NET #1  
subnet = 172.18.124.0  
mask = 255.255.255.0  
protocol = 0  
src port = 0  
dest port=0

49 16:52:38.097 06/18/03 Sev=Info/4 CM/0x63100019  
Mode Config data received

50 16:52:38.347 06/18/03 Sev=Info/5 IKE/0x63000055  
Received a key request from Driver for IP address 10.1.1.1,  
GW IP = 10.1.1.1

51 16:52:38.347 06/18/03 Sev=Info/4 IKE/0x63000013  
SENDING >>> ISAKMP OAK QM \*(HASH, SA, NON, ID, ID) to 10.1.1.1

52 16:52:38.728 06/18/03 Sev=Info/5 IKE/0x6300002F  
Received ISAKMP packet: peer = 10.1.1.1

53 16:52:38.728 06/18/03 Sev=Info/4 IKE/0x63000014  
RECEIVING <<< ISAKMP OAK QM \*(HASH, SA, NON, ID, ID, NOTIFY:STATUS\_RESP\_LIFETIME)  
from 10.1.1.1

54 16:52:38.738 06/18/03 Sev=Info/5 IKE/0x63000044  
RESPONDER-LIFETIME notify has value of 3600 seconds

55 16:52:38.738 06/18/03 Sev=Info/5 IKE/0x63000045

RESPONDER-LIFETIME notify has value of 4608000 kb

56 16:52:38.738 06/18/03 Sev=Info/4 IKE/0x63000013  
SENDING >>> ISAKMP OAK QM \*(HASH) to 10.1.1.1

57 16:52:38.738 06/18/03 Sev=Info/5 IKE/0x63000058  
Loading IPsec SA (Message ID = 0x7AB5F1A7 OUTBOUND SPI = 0xC0BE2FC6  
INBOUND SPI = 0x56FFC535)

58 16:52:38.788 06/18/03 Sev=Info/5 IKE/0x63000025  
Loaded OUTBOUND ESP SPI: 0xC0BE2FC6

59 16:52:38.798 06/18/03 Sev=Info/5 IKE/0x63000026  
Loaded INBOUND ESP SPI: 0x56FFC535

60 16:52:38.798 06/18/03 Sev=Info/4 CM/0x6310001A  
One secure connection established

61 16:52:38.828 06/18/03 Sev=Info/6 DIALER/0x63300003  
Connection established.

62 16:52:38.868 06/18/03 Sev=Info/6 CVPND/0x63400011  
Found matching adapter

63 16:52:38.968 06/18/03 Sev=Info/6 CVPND/0x63400011  
Found matching adapter

64 16:52:39.819 06/18/03 Sev=Info/4 CM/0x63100037  
Address watch added for 10.0.0.1. Current address(es): 10.0.0.1.

65 16:52:40.280 06/18/03 Sev=Info/4 IPSEC/0x63700014  
Deleted all keys

66 16:52:40.280 06/18/03 Sev=Info/4 IPSEC/0x63700010  
Created a new key structure

67 16:52:40.290 06/18/03 Sev=Info/4 IPSEC/0x6370000F  
Added key with SPI=0xc62fbec0 into key list

68 16:52:40.290 06/18/03 Sev=Info/4 IPSEC/0x63700010  
Created a new key structure

69 16:52:40.290 06/18/03 Sev=Info/4 IPSEC/0x6370000F  
Added key with SPI=0x35c5ff56 into key list

70 16:52:41.562 06/18/03 Sev=Info/6 DIALER/0x63300008  
MAPI32 Information - Outlook not default mail client

71 16:52:54.230 06/18/03 Sev=Info/5 IKE/0x63000055  
Received a key request from Driver for IP address 1.1.1.2, GW IP = 10.1.1.1

72 16:52:54.250 06/18/03 Sev=Info/4 IKE/0x63000013  
SENDING >>> ISAKMP OAK QM \*(HASH, SA, NON, ID, ID) to 10.1.1.1

73 16:52:54.731 06/18/03 Sev=Info/5 IKE/0x6300002F  
Received ISAKMP packet: peer = 10.1.1.1

74 16:52:54.731 06/18/03 Sev=Info/4 IKE/0x63000014  
RECEIVING <<< ISAKMP OAK QM \*(HASH, SA, NON, ID, ID, NOTIFY:STATUS\_RESP\_LIFETIME)  
from 10.1.1.1

75 16:52:54.741 06/18/03 Sev=Info/5 IKE/0x63000044  
RESPONDER-LIFETIME notify has value of 3600 seconds

76 16:52:54.741 06/18/03 Sev=Info/5 IKE/0x63000045  
RESPONDER-LIFETIME notify has value of 4608000 kb

77 16:52:54.741 06/18/03 Sev=Info/4 IKE/0x63000013  
SENDING >>> ISAKMP OAK QM \*(HASH) to 10.1.1.1

78 16:52:54.741 06/18/03 Sev=Info/5 IKE/0x63000058  
Loading IPsec SA (Message ID = 0x41A55AFF OUTBOUND SPI = 0xCCEDA620  
INBOUND SPI = 0x0C5B3DB2)

79 16:52:54.771 06/18/03 Sev=Info/5 IKE/0x63000025  
Loaded OUTBOUND ESP SPI: 0xCCEDA620

80 16:52:54.781 06/18/03 Sev=Info/5 IKE/0x63000026  
Loaded INBOUND ESP SPI: 0x0C5B3DB2

81 16:52:54.781 06/18/03 Sev=Info/4 CM/0x63100021  
Additional Phase 2 SA established.

82 16:52:55.472 06/18/03 Sev=Info/4 IPSEC/0x63700010  
Created a new key structure

83 16:52:55.472 06/18/03 Sev=Info/4 IPSEC/0x6370000F  
Added key with SPI=0x20a6edcc into key list

84 16:52:55.472 06/18/03 Sev=Info/4 IPSEC/0x63700010  
Created a new key structure

85 16:52:55.472 06/18/03 Sev=Info/4 IPSEC/0x6370000F  
Added key with SPI=0xb23d5b0c into key list

86 16:52:55.472 06/18/03 Sev=Info/4 IPSEC/0x63700019  
Activate outbound key with SPI=0x20a6edcc for inbound key with SPI=0xb23d5b0c

---

## Related Information

- [RADIUS in Cisco IOS Software Documentation](#)
  - [RADIUS Technology Support Page](#)
  - [IPSec Negotiation/IKE Protocols Support Page](#)
  - [Cisco VPN Client Support Page](#)
  - [Request for Comments \(RFCs\)](#)
  - [Technical Support & Documentation – Cisco Systems](#)
- 

[Contacts & Feedback](#) | [Help](#) | [Site Map](#)

© 2008 – 2009 Cisco Systems, Inc. All rights reserved. [Terms & Conditions](#) | [Privacy Statement](#) | [Cookie Policy](#) | [Trademarks of Cisco Systems, Inc.](#)

---

Updated: Feb 07, 2007

Document ID: 21060

---