

Using Telnet to Run Utilities on Remote Cisco ICM Terminals

Document ID: 20436

Introduction

Prerequisites

Requirements

Components Used

Conventions

Connect to a Remote ICM System

NetPro Discussion Forums – Featured Conversations

Related Information

Introduction

This document explains how to connect to and exit from Telnet, a standard terminal emulation protocol in the TCP/IP protocol stack. Telnet is loaded on your computer when you install Cisco Intelligent Contact Management (ICM). You can use Telnet to connect to and run utilities on remote ICM terminals, such as **dumplog** , **OPCTest** , and **rttest** . You can also use Telnet to start and stop ICM services and to review ICM log files.

Prerequisites

Requirements

Cisco recommends that you have knowledge of this topic:

- Telnet

Components Used

This document is not restricted to specific software and hardware versions.

The information in this document was created from the devices in a specific lab environment. All of the devices used in this document started with a cleared (default) configuration. If your network is live, make sure that you understand the potential impact of any command.

Conventions

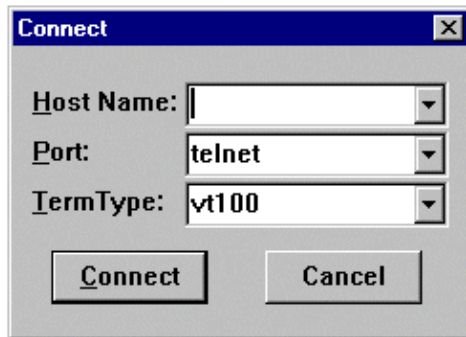
Refer to Cisco Technical Tips Conventions for more information on document conventions.

Connect to a Remote ICM System

Complete these steps to access Telnet:

1. Start Telnet in one of two ways:

- ◆ Select **Start > Run** and enter **Telnet**.
 - ◆ Select **Start > Programs > Accessories** and click **Telnet**.
2. In Telnet, select **Connect > Remote System**. This Connect dialog box displays:



3. In the Host Name field, enter the name or IP address of the remote system you want to connect to. For example, geociscortra or 179.x.x.x.
4. Select **Telnet** in the Port field.
5. Select **vt100** in the TermType field.
6. Click **Connect**.
7. When a connection is made, the title bar of the Telnet window displays the host name or IP address of the system to which you are connected.
8. Log in with a valid account name and password. Typically, this is your customer username. Refer to Cisco ICM Hand-off documents for the correct account name.
9. Enter **n** for no when prompted if you want to use advanced features.
10. Enter **exit** to quit Telnet when you are finished using the remote system.

NetPro Discussion Forums – Featured Conversations

Networking Professionals Connection is a forum for networking professionals to share questions, suggestions, and information about networking solutions, products, and technologies. The featured links are some of the most recent conversations available in this technology.

[NetPro Discussion Forums – Featured Conversations for Customer Contact Software](#)

[IP Communications and Video: Contact Center](#)

Related Information

- [How to Use the Dumplog Utility](#)
- [Using the OPCTest Command Line Utility](#)
- [The Cisco ICM rttest Utility](#)
- [Technical Support & Documentation – Cisco Systems](#)

All contents are Copyright © 2006–2007 Cisco Systems, Inc. All rights reserved. Important Notices and Privacy Statement.

Updated: Jul 26, 2007

Document ID: 20436