

# Table of Contents

<b><u>Setting the Optical Amplifier Line Direction</u></b> .....	<b>1</b>
<u>Document ID: 19340</u> .....	1
<u>Introduction</u> .....	1
<u>Prerequisites</u> .....	1
<u>Requirements</u> .....	1
<u>Components Used</u> .....	1
<u>Conventions</u> .....	2
<u>Procedure</u> .....	2
<u>Related Information</u> .....	3

# Setting the Optical Amplifier Line Direction

Document ID: 19340

---

**Introduction**

**Prerequisites**

Requirements

Components Used

Conventions

**Procedure**

**Related Information**

---

## Introduction

This procedure explains how to set the line direction (west-to-east, east-to-west) on an ONS1580x system on all types of optical amplifiers.

It is necessary to have right line direction on all optical amplifiers so that system can work properly. If line directions are wrong, the system does not start. This procedure is traffic-affecting.

## Prerequisites

### Requirements

Readers of this document should have knowledge of these topics:

- Be familiar with CPTK in order to establish a connection with network elements (NE).

### Components Used

In order to follow this procedure, it is necessary to have Cisco Photonics Tool Kit (CPTK) software installed on a PC running Windows 95 Windows 98 or Windows 2000.

Depending on how you plan to establish the connection with an ONS1580x, it is necessary to have right cable. There are two possibilities:

The information in this document is based on these software and hardware versions:

- Ethernet connection
- Point to Point Protocol (PPP) connection

For more information, refer to the CPTK software administration manual.

The information in this document was created from the devices in a specific lab environment. All of the devices used in this document started with a cleared (default) configuration. If your network is live, make sure that you understand the potential impact of any command.

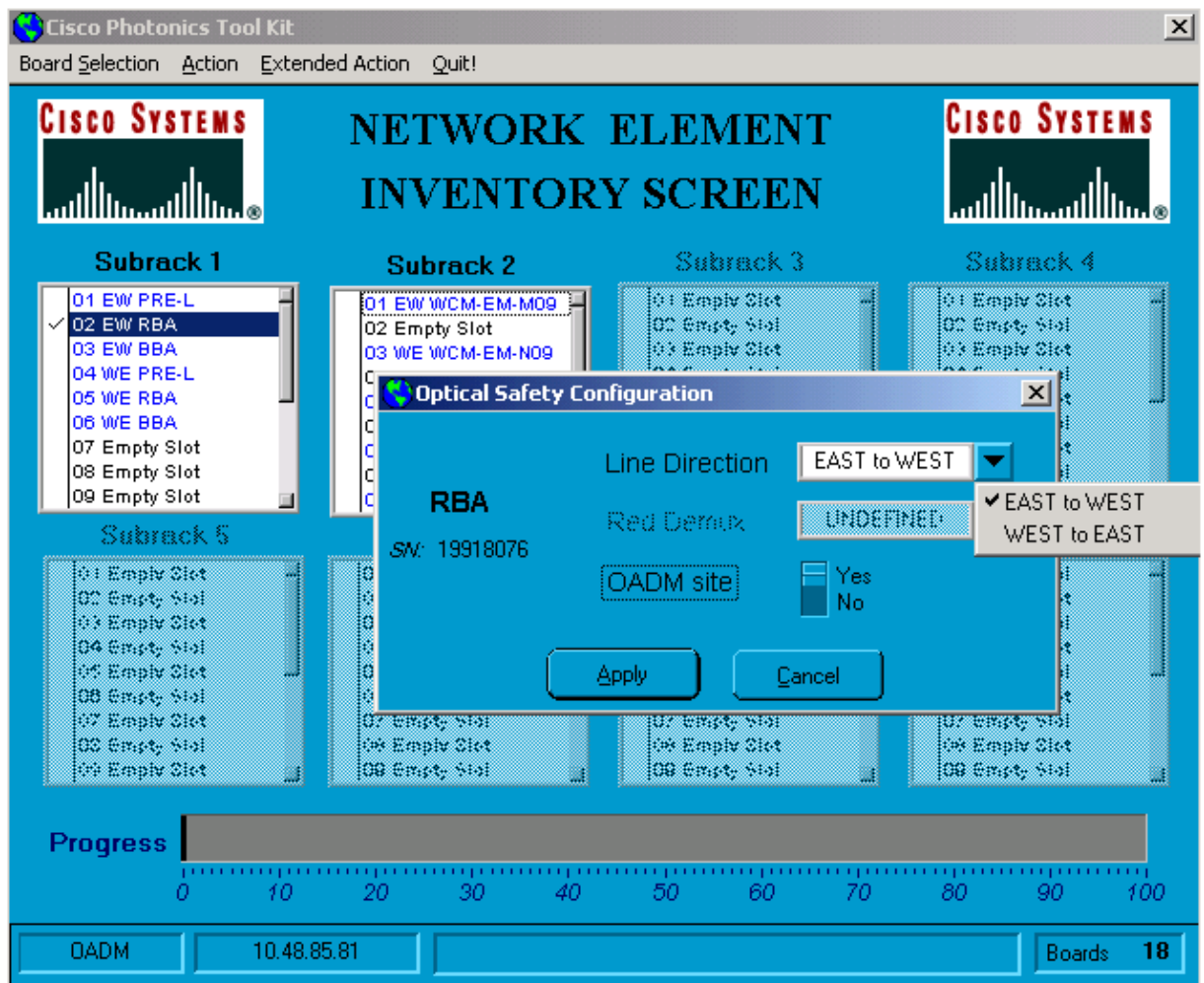
## Conventions

For more information on document conventions, refer to the Cisco Technical Tips Conventions.

## Procedure

To change the line direction of an amplifier:

1. Connect to the ONS 1580x system (as described in the CPTK software administration manual). The **Network Element Inventory Screen** opens.
2. Select an amplifier module by clicking in the column to the left of the module name.
3. Click on the **Action** menu and select the **Optical Safety Configuration** option. The **Optical Safety Configuration** window opens.
4. Choose **East to West** or **West to East** from the **Line Direction** list.



5. If the module being configured is an RBA-10G, select **No 24WD-RX** or **24WD-RX** (enabled or disabled) from the **Red Demux** drop-down list to specify the red band demultiplexer type required for the module.

**Note:** Specifying the wrong demultiplexer type can result in a lack of continuous output power in the RBA-10G module.

6. If the module being configured is a Red band Booster Amplifier (RBA) or Blue band Booster Amplifier (BBA) module, click **Yes** or **No** in the **Optical Add Drop Multiplexer (OADM) site** field

to indicate if the module is in an optical add/drop multiplexing site or an optical line site.  
7. Click **Apply**.

---

## **Related Information**

- **Technical Support – Cisco Systems**
- 

All contents are Copyright © 1992–2005 Cisco Systems, Inc. All rights reserved. Important Notices and Privacy Statement.

---

Updated: Dec 15, 2005

Document ID: 19340

---