

Customized Polling and Threshold Groups in Device Fault Manager

Document ID: 19001

Introduction

Prerequisites

- Requirements

- Components Used

- Conventions

Create and Populate a Threshold Group

- Step-by-Step Instructions

Related Information

Introduction

This document describes how to create new polling and threshold groups with threshold values and settings different from the default groups. In certain network environments you might need to place critical routers in a group different than the default router group and set the thresholds and polling values accordingly. To accomplish this, you must create new polling or threshold groups and add the members to that group.

In version 1.1 of Device Fault Manager (DFM), you cannot drag and drop devices to a group. The DFM must add the devices through its Matching Criteria facility.

Prerequisites

Requirements

There are no specific requirements for this document.

Components Used

The information in this document is based on the Device Fault Manager Version 1.1.

Note: This procedure is for NT and Solaris versions only.

The information in this document was created from the devices in a specific lab environment. All of the devices used in this document started with a cleared (default) configuration. If your network is live, make sure that you understand the potential impact of any command.

Conventions

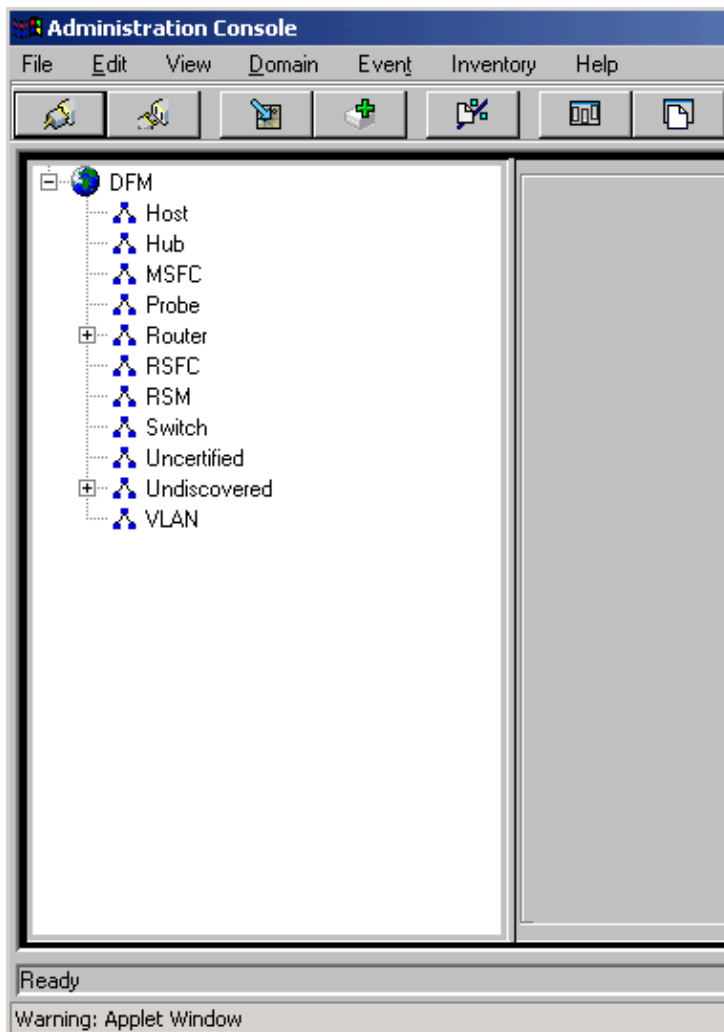
For more information on document conventions, refer to the Cisco Technical Tips Conventions.

Create and Populate a Threshold Group

Step-by-Step Instructions

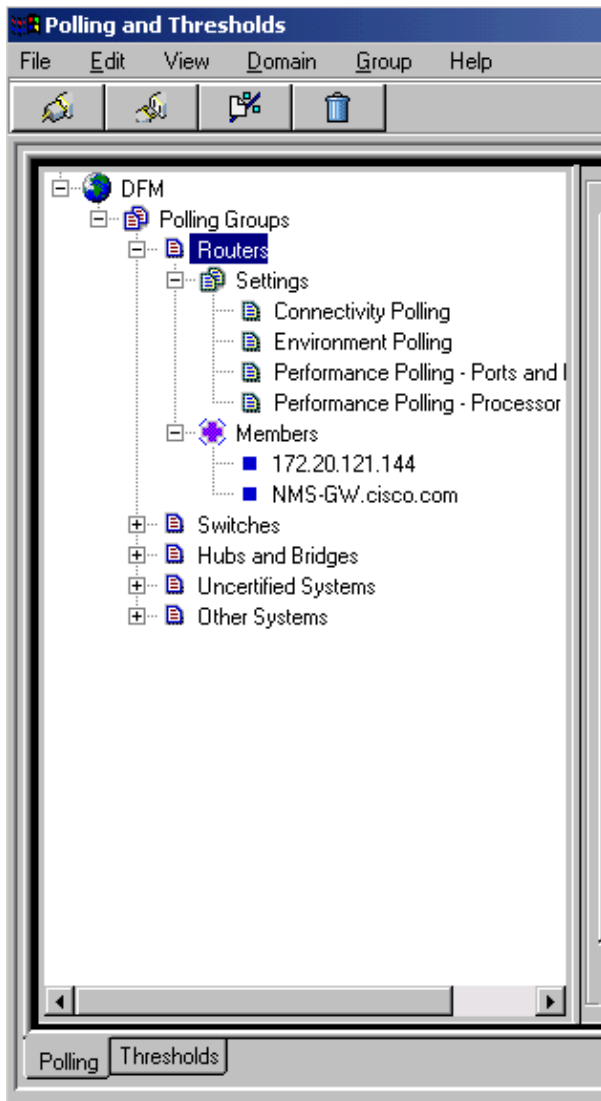
These steps guide you through how to create and add members to a Polling/Threshold group.

1. From the DFM administration console, select **Edit** and then **Polling and Thresholds**.



The DFM has default polling and threshold groups, such as **Routers**, **Switches**, and **Hubs and Bridges**. If you highlight **Polling Groups**, you see the DFM in the left panel and the default polling groups under.

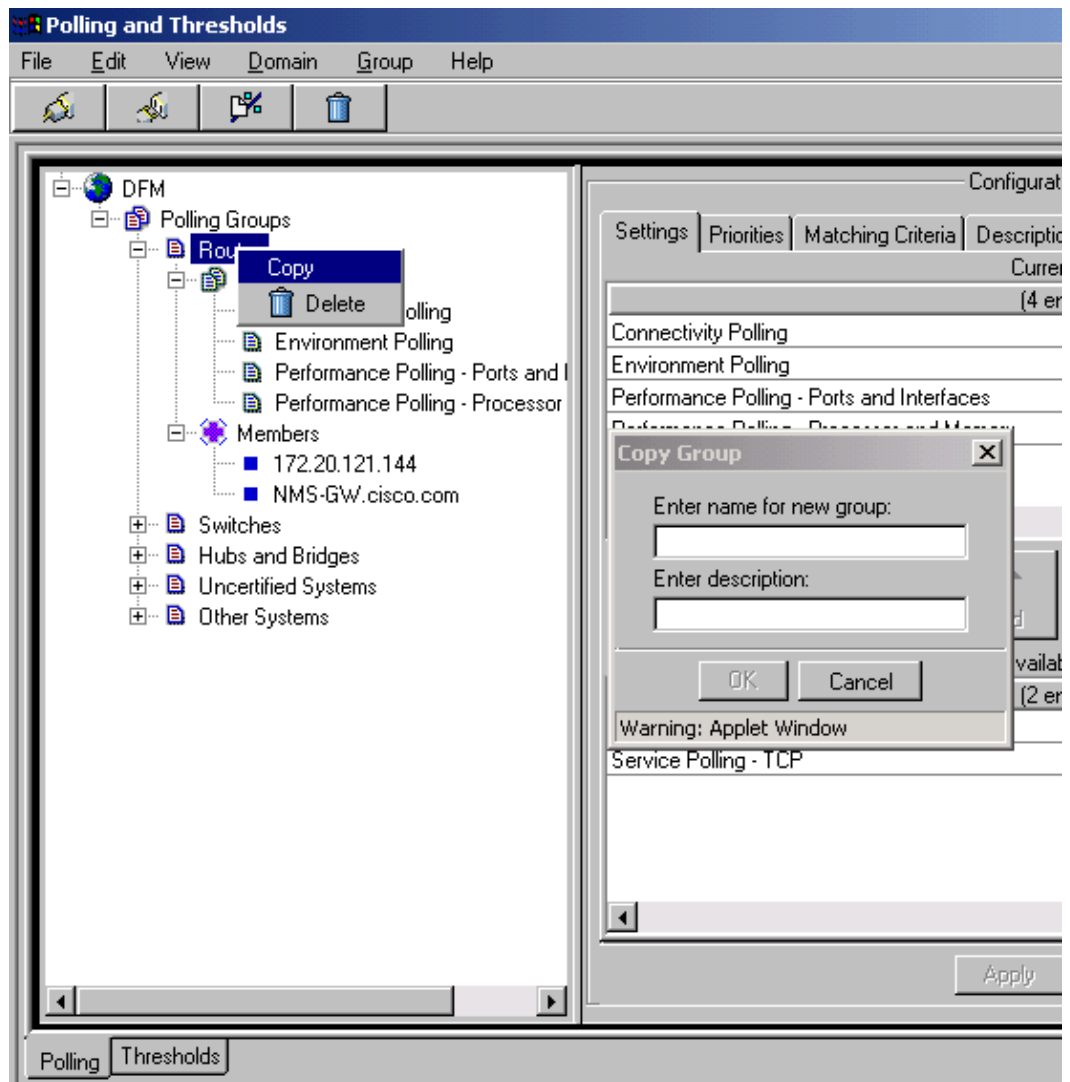
The **Router** group has two members: **172.20.121.144** and **NMS-GW.Cisco.com**.



2. To create a polling group you can either copy and modify an existing group or create a new group.

a. To copy and modify an existing group:

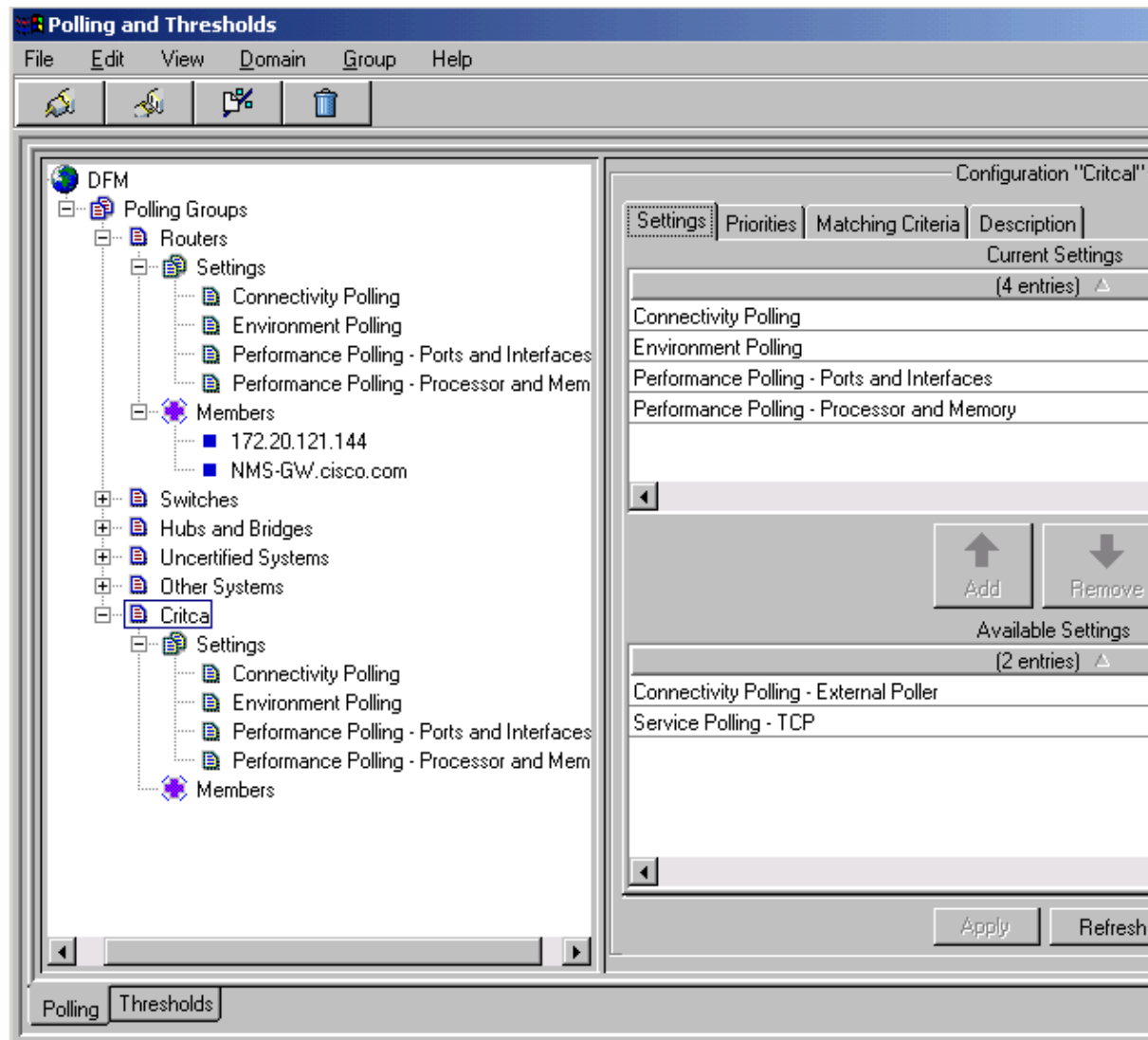
- a. Highlight the group and right click your mouse.
- b. Click **Copy** and you are prompted for a group name and description.
- c. Name the new group.
- d. Click **OK** and the new group appears.



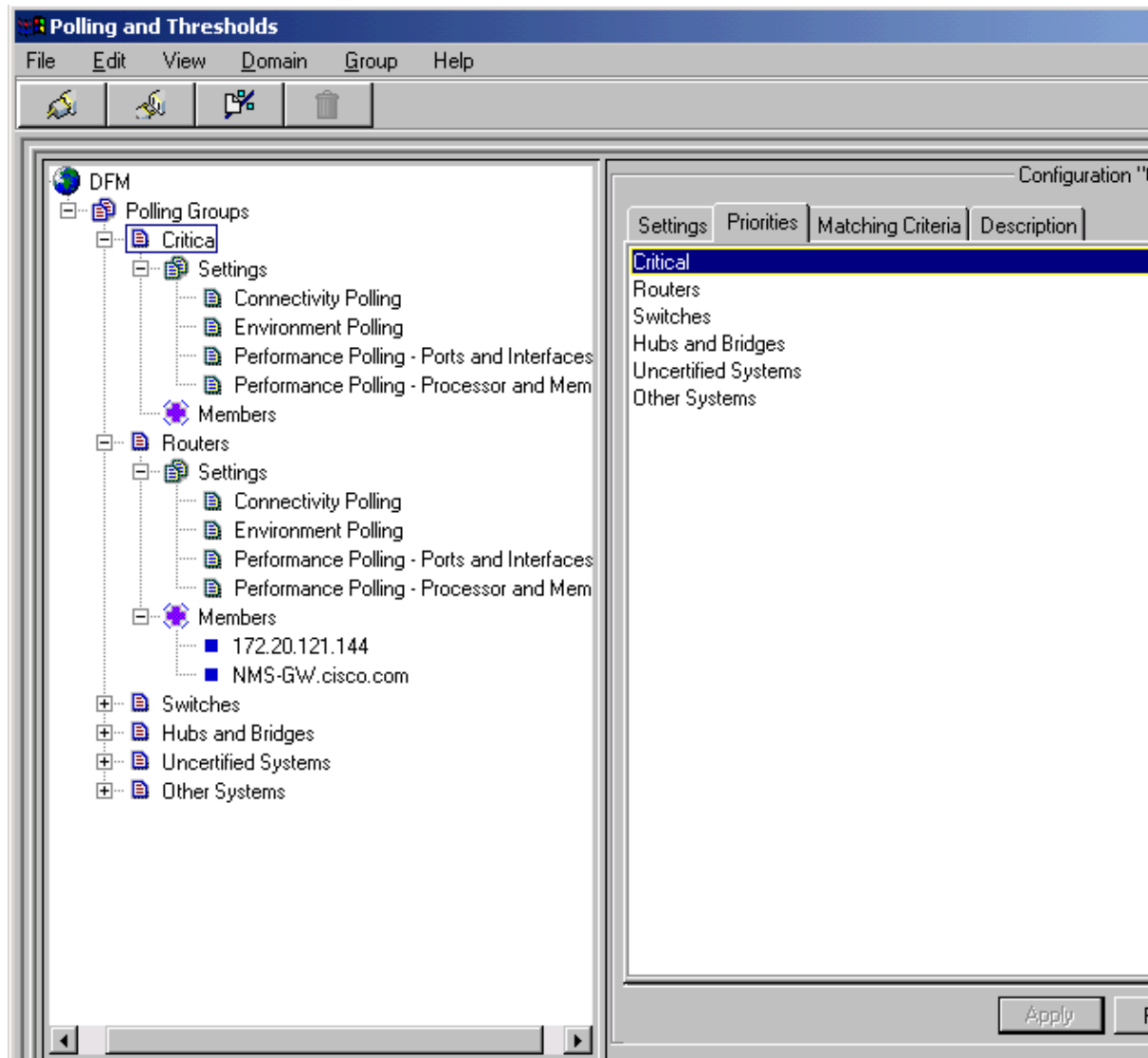
b. Create a new group, by going to **Group** and selecting **New Group**.

Note: Make sure that **Polling Groups** is highlighted in the left panel, otherwise the **New Group** option is unavailable.

Note: If you choose to copy the new group to create it, the new group inherits its **Properties** from the parent group and you can modify the settings. However, if you create an entirely new group, you must configure all the settings. For example, you must configure the **Settings** in the right panel with the kind of polling you want for this group. The figure shows a new polling group in the left panel, named **Critical**.



When you highlight the group in the left panel, the **Settings** options appear. You can modify the settings. To populate the group, you must change its **Priority** to the top position in the list. In the right panel, select the new group and use the arrow to move the priority to highest.



3. Next you must set the match criteria. The DFM populates groups on the basis of the match criteria. You can select one or more match criteria for your polling group from the list.

a. Use the arrow key to select a match criteria and move it to the upper window.

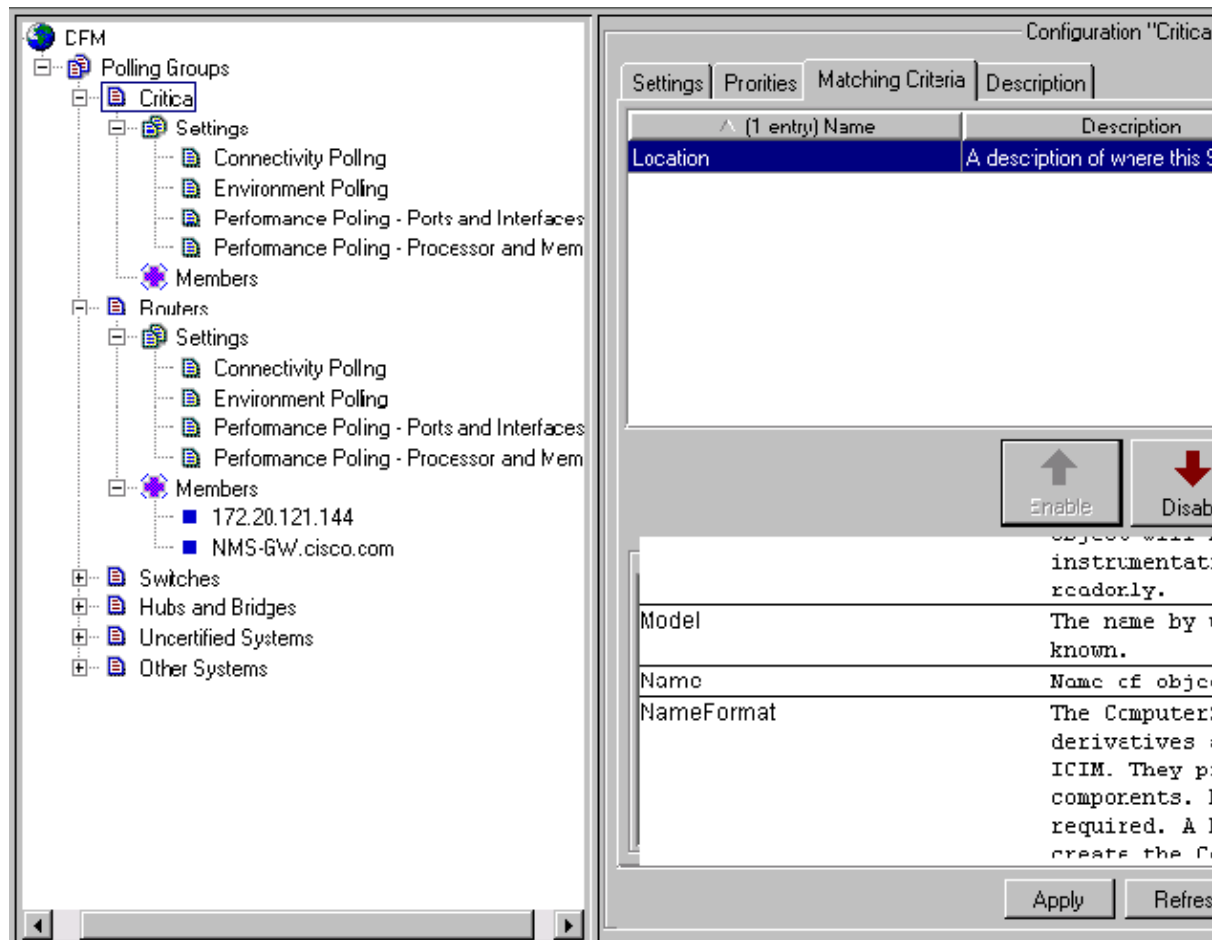
In this example, **Location** is selected as the match criteria and the value set for **Location** is **SJ-K1**.

b. Set this value on the router using the **snmp-server location** command:

```
NMS-GW(config)# snmp-server location SJ-K1
```

The DFM polls the devices. If a device has **Location** set to **SJ-K1**, it is added to the polling group, in this case the group **Critical**.

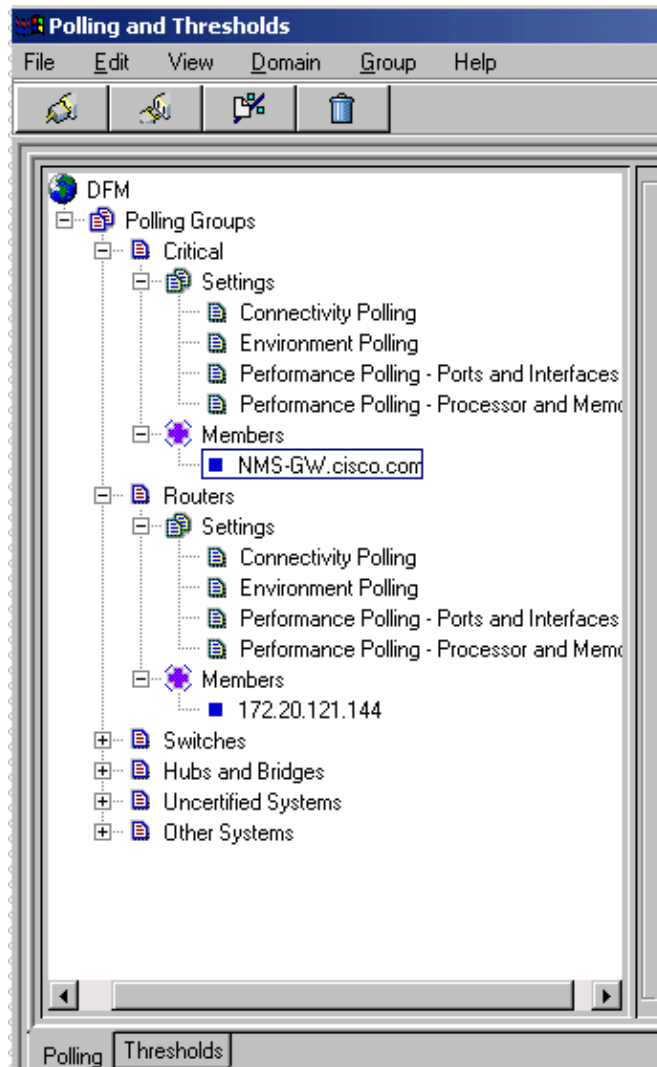
Note: You can select any option from the list.



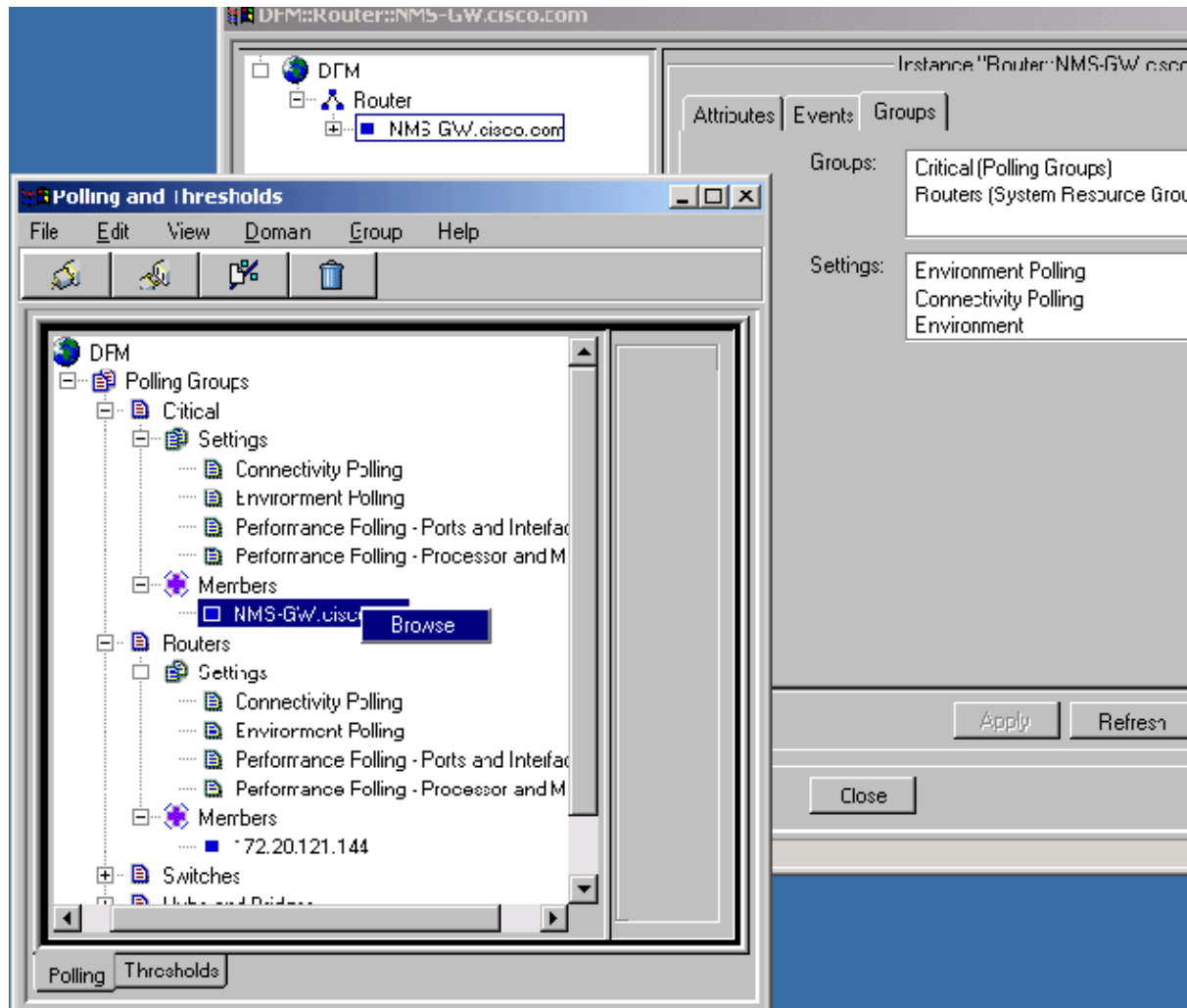
- c. After entering the value for the match criteria, click **Enter**.
4. These steps force the DFM to reconfigure devices and populate the groups with new settings.
- a. From the group configuration right panel, click **Apply**.
 - b. Click **Group**.
 - c. Select **Reconfigure**.

The devices must be present in some other group or, in other words, must already be managed by the DFM. If the devices are not managed, go to the Administration Console, click **Inventory** and then **Add Agent**. This allows you to add devices to the DFM directly without importing from other sources like Resource Manager Essentials (RME). The DFM automatically puts the new device in a group based upon the match criteria.

After refreshing the view, the **NMS-GW.Cisco.com**, which was in the **Router** polling group, appears in the **Critical** polling group. When reconfiguring, the DFM determined all the devices with location set to **SJ-K1**, and placed them in the **Critical** group.



You can browse the device by highlighting it and right clicking. This provides information about the device, such as the groups it belongs to and the type of polling setting.



Troubleshoot the Reconfiguration

If you apply and reconfigure the device, and it does not appear in the group, follow these steps:

1. Manually delete the device.
2. Add the device that is already present in an existing group.
3. If the device is still not present in the group, go to the Administration Console, click **Inventory** and then **Add Agent**.

Note: You must highlight the group for which you are trying to create another group. For example, if you want to create a new group for routers, you must highlight the **Router** group and then create a new group from **Group**→**New Group**. When you highlight the group that your new group is based upon, your new group inherits the originating groups match criteria and you can modify it.

Related Information

- [Device Fault Manager Documentation](#)
 - [Technical Support – Cisco Systems](#)
-

