

Loading VPN 3000 Series Concentrator MIBs

Document ID: 18938

Introduction

Prerequisites

Requirements

Components Used

Conventions

Enable SNMP on the VPN 3000 Concentrator

Loading Order for the VPN 3000 Concentrator MIBs

Essential MIBs and Optional MIBs

NetPro Discussion Forums – Featured Conversations

Related Information

Introduction

This document provides information about how to load VPN 3000 Series Concentrator Management Information Bases (MIBs) onto your system.

Prerequisites

Requirements

Cisco recommends that you have knowledge of these topics:

- Your network management platform (for example, CiscoWorks or HP OpenView)
- Simple Network Management Protocol (SNMP)

Components Used

The information in this document is based on all software and hardware versions for the VPN 3000 Series Concentrator.

Note: Use the Software Center (registered customers only) to download MIBs.

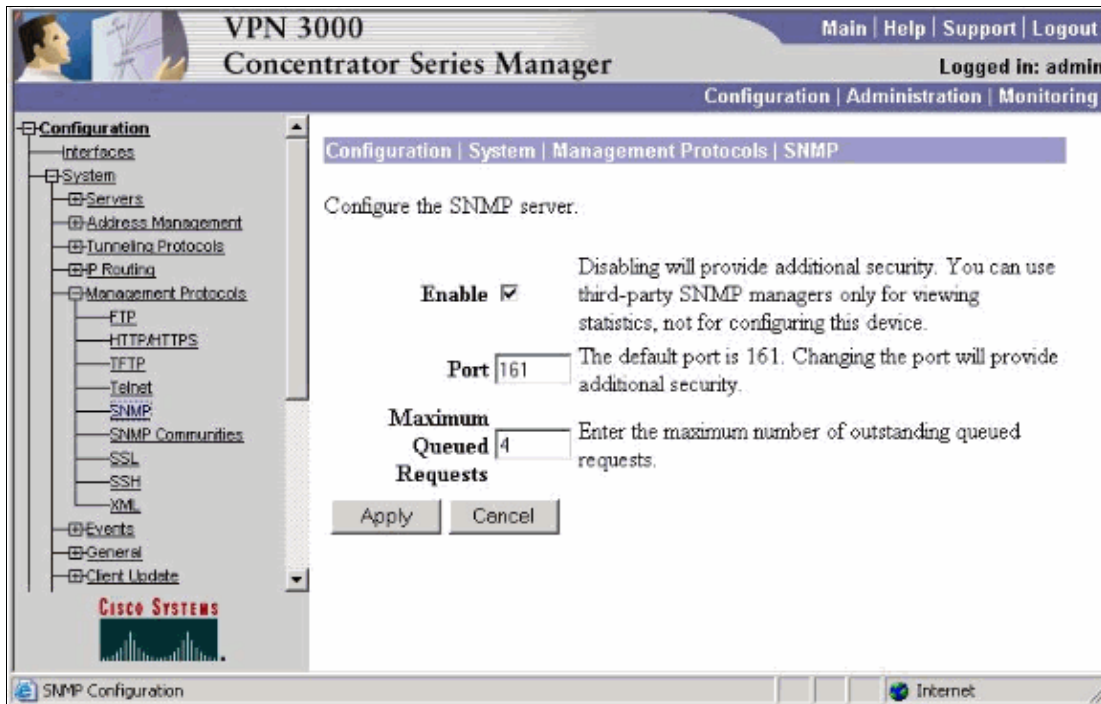
The information in this document was created from the devices in a specific lab environment. All of the devices used in this document started with a cleared (default) configuration. If your network is live, make sure that you understand the potential impact of any command.

Conventions

Refer to Cisco Technical Tips Conventions for more information on document conventions.

Enable SNMP on the VPN 3000 Concentrator

Select **Configuration > System > Management Protocols > SNMP**, check **Enable**, and then click **Apply** to enable SNMP on VPN 3000 Concentrator. The default options are displayed as this window shows:



Loading Order for the VPN 3000 Concentrator MIBs

Load the VPN 3000 Concentrator MIBs on your system in this order:

```

ALTIGA-GLOBAL-REG.my
ALTIGA-MIB.my
ALTIGA-CAP.my
altiga-compl.mi2
ALTIGA-DHCP-STATS.my
ALTIGA-DNS-STATS-MIB.my
ALTIGA-EVENT-STATS-MIB.my
ALTIGA-FILTER-STATS-MIB.my
ALTIGA-HARDWARE-STATS-MIB.my
ALTIGA-HTTP-STATS-MIB.my
cisco-smi.mib
*

```

Note: If you use Cisco Network Management applications, include `cisco-cdp.mib` and `cisco-tc.mib` where the asterisk (*) is located.

```

CISCO-IPSEC-FLOW-MONITOR-MIB.my
ALTIGA-SESSION-STATS-MIB.my
ALTIGA-L2TP-STATS-MIB.my
ALTIGA-PPP-STATS-MIB.my
ALTIGA-PPTP-STATS-MIB.my
ALTIGA-TELNET-STATS-MIB.my
ALTIGA-VERSION-STATS-MIB.my
vrrp.mi2
ALTIGA-LBSSF-STATS-MIB.my
ADMIN-AUTH-STATS-MIB.my
draft-ietf-radius-auth-clientmib.mi2
draft-ietf-radius-acc-clientmib.mi2

```

Essential MIBs and Optional MIBs

Loading all of the MIBs listed in the Loading Order section is not required. Only these MIBs are essential:

ALTIGA-GLOBAL-REG.my
ALTIGA-MIB.my

You must load these MIBs if you want to manage IPsec functionality:

cisco-smi.mib
CISCO-IPSEC-FLOW-MONITOR-MIB.my

Load additional MIBs, in the order previously specified, according to the functionality you want to manage.

NetPro Discussion Forums – Featured Conversations

Networking Professionals Connection is a forum for networking professionals to share questions, suggestions, and information about networking solutions, products, and technologies. The featured links are some of the most recent conversations available in this technology.

NetPro Discussion Forums – Featured Conversations for VPN
Service Providers: VPN Service Architectures
Service Providers: Network Management
Virtual Private Networks: General

Related Information

- [Cisco VPN 3000 Series Concentrator Support Page](#)
- [Cisco VPN 3000 Series Client Support Page](#)
- [IPsec Negotiation/IKE Protocols Support Page](#)
- [Technical Support & Documentation – Cisco Systems](#)

All contents are Copyright © 2006–2007 Cisco Systems, Inc. All rights reserved. Important Notices and Privacy Statement.

Updated: Mar 02, 2006

Document ID: 18938