

Adding and Dropping Nodes in Unidirectional Path Switched Rings

Document ID: 18480

Introduction

Prerequisites

- Requirements
- Components Used
- Background Information
- Conventions

How to Add a Node to the UPSR

- Check Circuit Integrity
- Initiate a Forced Protection Switch
- Connect Fibers to the New Node
- Re-launch CTC
- Update Circuits
- Release the Protection Switch

How to Remove a Node From the UPSR

- Delete Circuits Dropped at the Node Being Removed

Related Information

Introduction

This document describes how to add and remove a 15454 node in a Unidirectional Path Switched Ring (UPSR). With the use of a fully documented lab setup with detailed explanations, the document walks the reader through the steps necessary to first add and then remove a node in a UPSR.

Prerequisites

Requirements

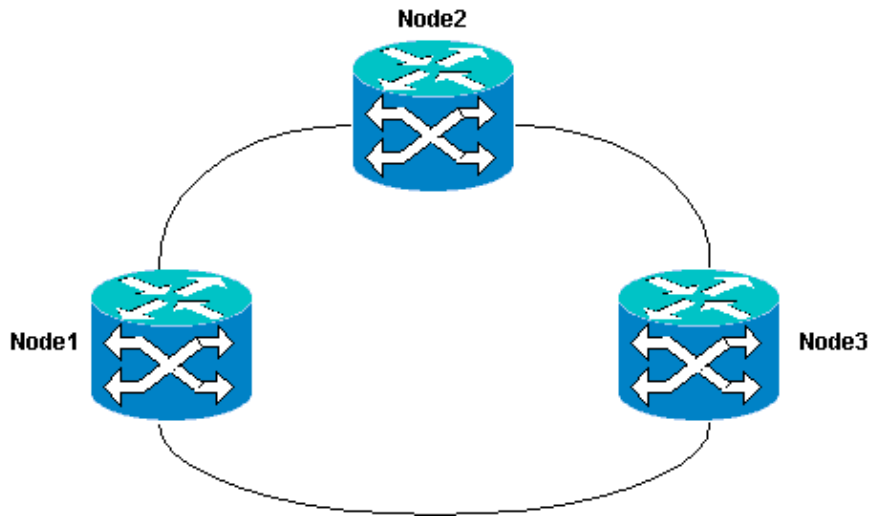
There are no specific prerequisites for this document.

Components Used

This document is not restricted to specific software and hardware versions.

Background Information

This document uses a sample lab setup with three nodes (Node1, Node2 and Node3) in order to demonstrate how to add and then remove a fourth node (Node4) between Node1 and Node3. This network diagram shows the setup used here:



In this document, it is assumed that the new node is racked and powered up with all of its cards installed and their provisioning completed. Provisioning includes:

- General
- Network
- Timing
- SONET Data Communications Channels (SDCCs)
- Place the optical ports in service

References for the previous tasks can be found in the Setting Up a UPSR section of the Cisco ONS 15454 Procedure Guide, Release 3.4. Be sure to run test traffic through the new node in order to verify that all hardware is operational. Do this prior to the start of the procedure. You should also identify and tag all fibers involved before you begin.

Note: You can only add one node to a UPSR at a time.



Caution: The procedures to add a node and remove a node are service-affecting and should be performed during a maintenance window due to the protection switching involved. Disruptions of traffic up to three minutes are possible for any Ethernet traffic due to **Spanning Tree** re-convergence. All other traffic endures up to a 50 ms hit. In addition, the procedure to remove a node causes each circuit that changed Synchronous Transport Signal (STS) or Virtual Tributary (VT) while it passes through the removed node in order to incur an outage for the length of time that it takes to delete and rebuild. This depends on operator proficiency with Cisco Transport Controller (CTC).

Conventions

Refer to Cisco Technical Tips Conventions for more information on document conventions.

How to Add a Node to the UPSR

This procedure involves you to:

- Check circuit integrity.
- Initiate a forced protection switch.
- Connect fibers to the new node.

- Re-launch CTC.
- Update circuits.
- Release the forced protection switch.

This is the UPSR ring topology in the lab setup as seen from the CTC network view:



Check Circuit Integrity

Complete the steps in the instructions provided in order to check the circuit integrity:

1. From the CTC network view confirm all circuits are in an **Active** state.

If any circuits are in an **Incomplete** state then do not continue. Refer to the Best Practices When Configuring Circuits on the ONS 15454 document in order to resolve issues with circuits in an **Incomplete** state.

Circuit Name	Type	Size	Dir	State	Source	Destination	VLANs	Spans
Test0004	VT	1.5	2-way	ACTIVE	Node1/s16/S1/W4-1	Node3/s16/S1/V5-1		3
Test0003	VT	1.5	2-way	ACTIVE	Node1/s16/S1/W3-1	Node3/s16/S1/V4-1		3
Test0006	VT	1.5	2-way	ACTIVE	Node1/s16/S1/W6-1	Node3/s16/S1/V7-1		3
Test0002	VT	1.5	2-way	ACTIVE	Node1/s16/S1/W2-1	Node3/s16/S1/V3-1		3
Test0005	VT	1.5	2-way	ACTIVE	Node1/s16/S1/W5-1	Node3/s16/S1/V6-1		3
Test0001	VT	1.5	2-way	ACTIVE	Node1/s16/S1/W1-1	Node3/s16/S1/V1-1		3

2. Confirm all circuits are in an **Active** state before you continue.

Initiate a Forced Protection Switch

Complete these instructions in order to initiate a forced protection switch:

1. Manually force traffic from the span where the new node (Node4) is inserted.
2. A forced protection switch can cause a service disruption if the UPSR ring is not free from errors. Check the **PM Stats** for all of the optical cards in the UPSR:
 - a. Log into each shelf in the ring.
 - b. Click on each UPSR optical card.
 - c. Choose **Performance**.
 - d. Click **Refresh**.
 - e. Verify that all fields contain zero values.

If you see zero values in all fields, then the span runs free of errors.



Caution: Traffic is unprotected during a forced protection switch.

3. From the Network view locate the span where the new node is to be inserted, Node1 to Node3 in the lab setup.

Right-click on the span and choose **Circuits** from the menu. This brings up a window that displays the circuits on the span.

STS	VT	UPSR	Circuit	Switch State
1	1-1	<input checked="" type="checkbox"/>	Test:0001	CLEAR
1	2-1	<input checked="" type="checkbox"/>	Test:0005	CLEAR
1	3-1 to 7-1		--unused--	
1	1-2	<input checked="" type="checkbox"/>	Test:0002	CLEAR
1	2-2	<input checked="" type="checkbox"/>	Test:0006	CLEAR
1	3-2 to 7-2		--unused--	
1	1-3	<input checked="" type="checkbox"/>	Test:0003	CLEAR
1	2-3 to 7-3		--unused--	
1	1-4	<input checked="" type="checkbox"/>	Test:0004	CLEAR
1	2-4 to 7-4		--unused--	
2-48	--		--unused--	

Switch all UPSR circuits away: **FORCE** [Apply] [Close]

4. Choose **Force** from the **UPSR Switch Selector** drop-down menu.
5. Click **Apply**.
6. Click **Yes** on the confirmation dialog box prompt in order for the change to take effect.

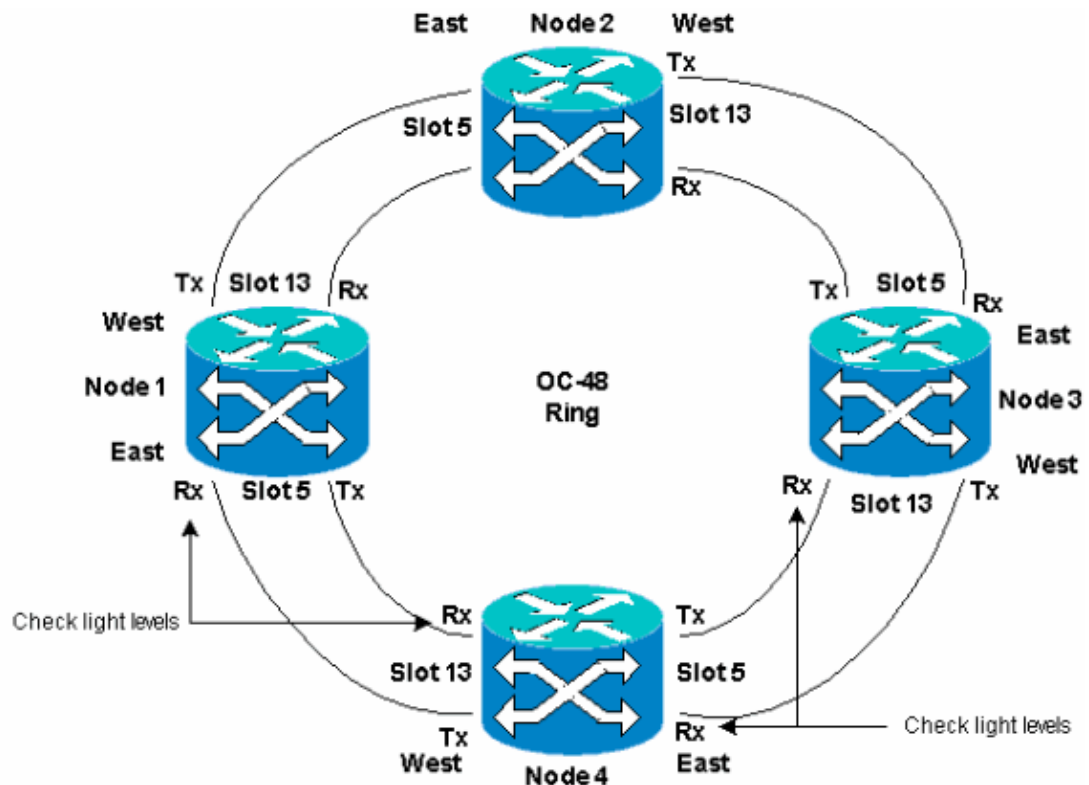
Note: All traffic is now forced from this span. The traffic now takes an alternate path around the other side of the ring.

7. Click **OK** at the informational dialog box.

Connect Fibers to the New Node

Complete these instructions in order to connect fibers to the new node:

1. Manually disconnect the fibers between Node1 and Node3 and then connect the fibers from Node1 and Node3 to the new Node4.



2. Ensure that you have an East to West configuration around the ring.

Note: It is a recommended best practice to consider the optical trunk card furthest to the right in the shelf as the East fiber, and the optical trunk card furthest to the left in the shelf as the West fiber.

In the previous lab setup we connect:

- ◆ Slot 13 Node3 to Slot 5 Node4
- ◆ Slot 13 Node4 to Slot 5 Node1

In each case, it is a recommended best practice to connect only the Tx fibers and check the light levels before you connect the Rx fibers. Rx levels can be found in the Card Reference section of the Cisco ONS 15454 Reference Guide, Release 3.4.

Re-launch CTC

Shut down and re-launch the CTC application.

Note: At this point it is normal to see Unequipped Path (UNEQ-P) alarms on the optical cards at Node1 and Node3 adjacent to the new Node4.

From the Network view, the new node is visible:



Update Circuits

Complete these steps in order to update the circuits:

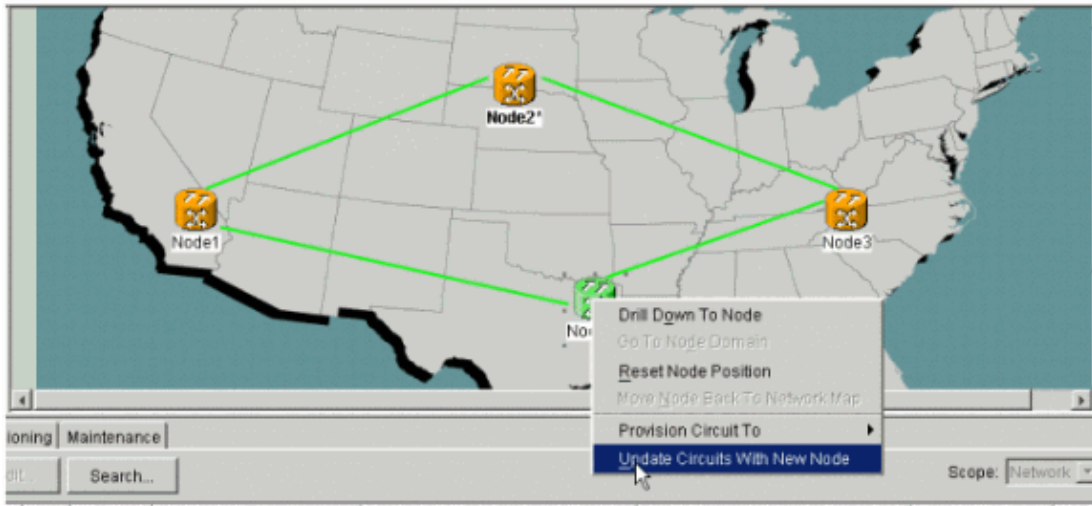
1. Click on the **Circuits** tab and wait a few minutes for the circuits to finish loading, that includes spans.

Once the circuits finish loading, notice that some are in an **Incomplete** state. Make a note of the number of **Incomplete** circuits.

Circuit Name	Type	Size	Dir	State	Source	Destination	VLANs	Spans
Test0006	VT	1.5	2-way	INCOMPLETE	Node1/s16/S1/W6-1	Node3/s16/S1/W7-1		2
Test0005	VT	1.5	2-way	INCOMPLETE	Node1/s16/S1/W5-1	Node3/s16/S1/W6-1		2
Test0004	VT	1.5	2-way	INCOMPLETE	Node1/s16/S1/W4-1	Node3/s16/S1/W5-1		2
Test0001	VT	1.5	2-way	INCOMPLETE	Node1/s16/S1/W1-1	Node3/s16/S1/W2-1		2
Test0003	VT	1.5	2-way	INCOMPLETE	Node1/s16/S1/W3-1	Node3/s16/S1/W4-1		2
Test0002	VT	1.5	2-way	INCOMPLETE	Node1/s16/S1/W2-1	Node3/s16/S1/W3-1		2

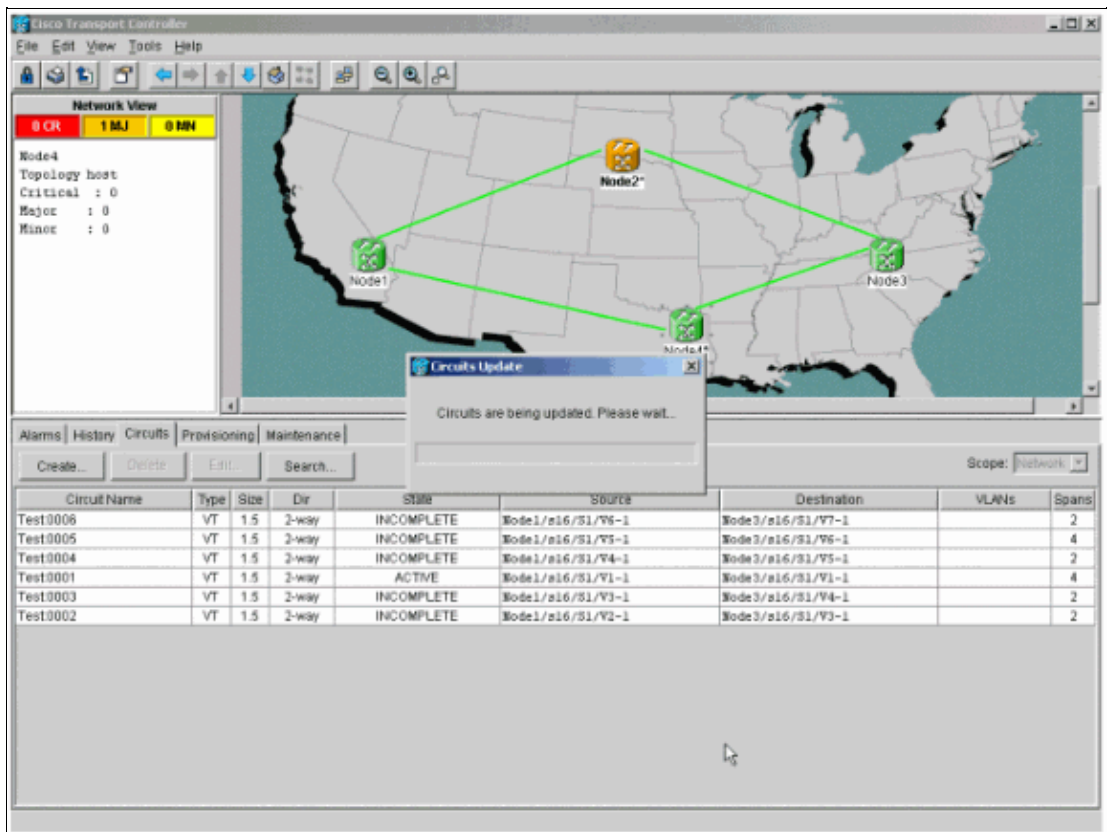
2. All **Incomplete** circuits need to be updated in order to account for the added new Node4.

Right-click on **Node4** and choose **Update Circuits With New Node** from the menu.



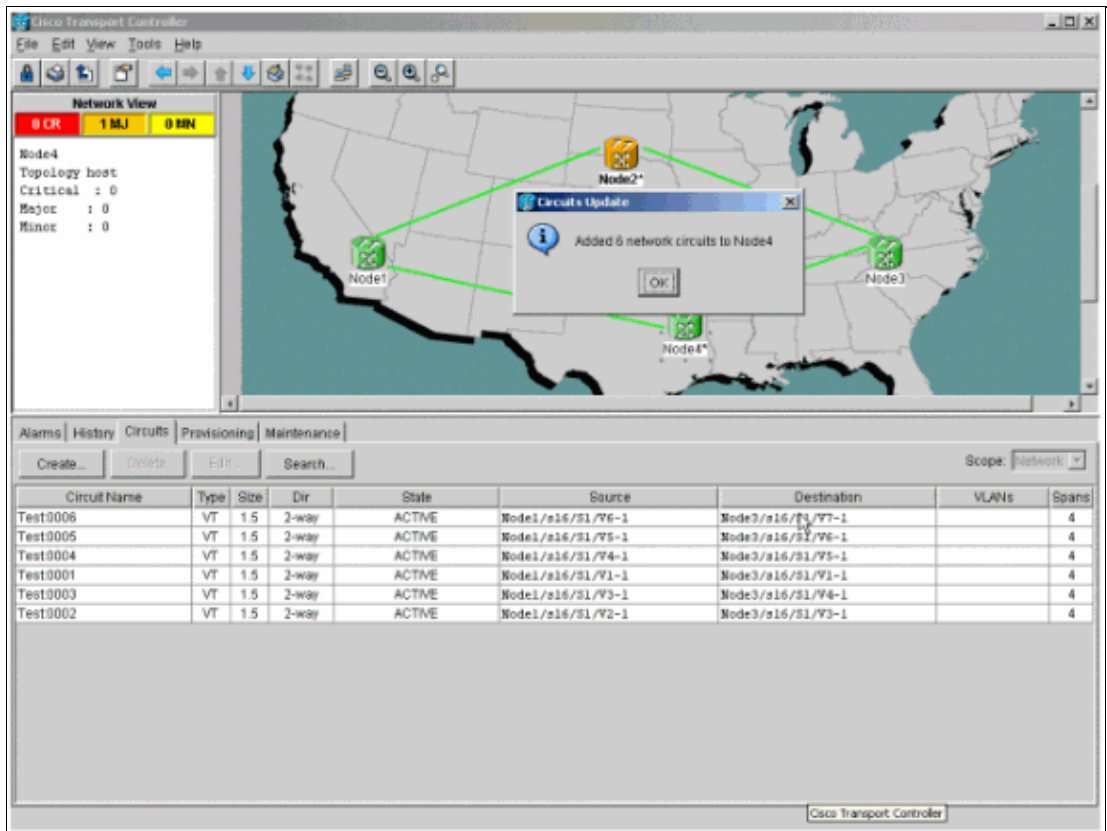
3. A dialog box appears, which indicates that circuits are updated.

The circuits become **Active** one at a time.



4. When all circuits are updated, a confirmation dialog box appears, which indicates the number of circuits updated.

This number should match the number of **Incomplete** circuits noted in step 1. At this point all circuits should be **Active**.



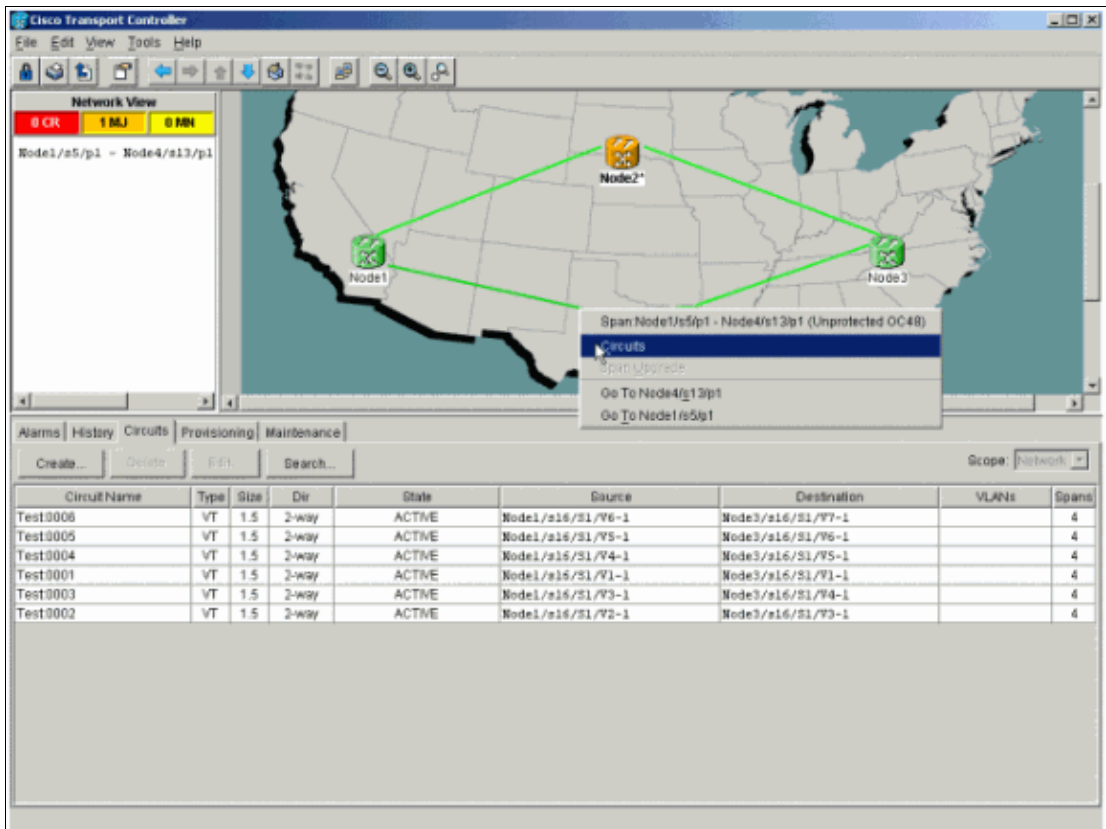
5. Click **OK** in the dialog box.

Note: If the number of updated circuits does not match the number noted in step 1, or if there are still **Incomplete** circuits, then repeat steps 2 through 5.

Release the Protection Switch

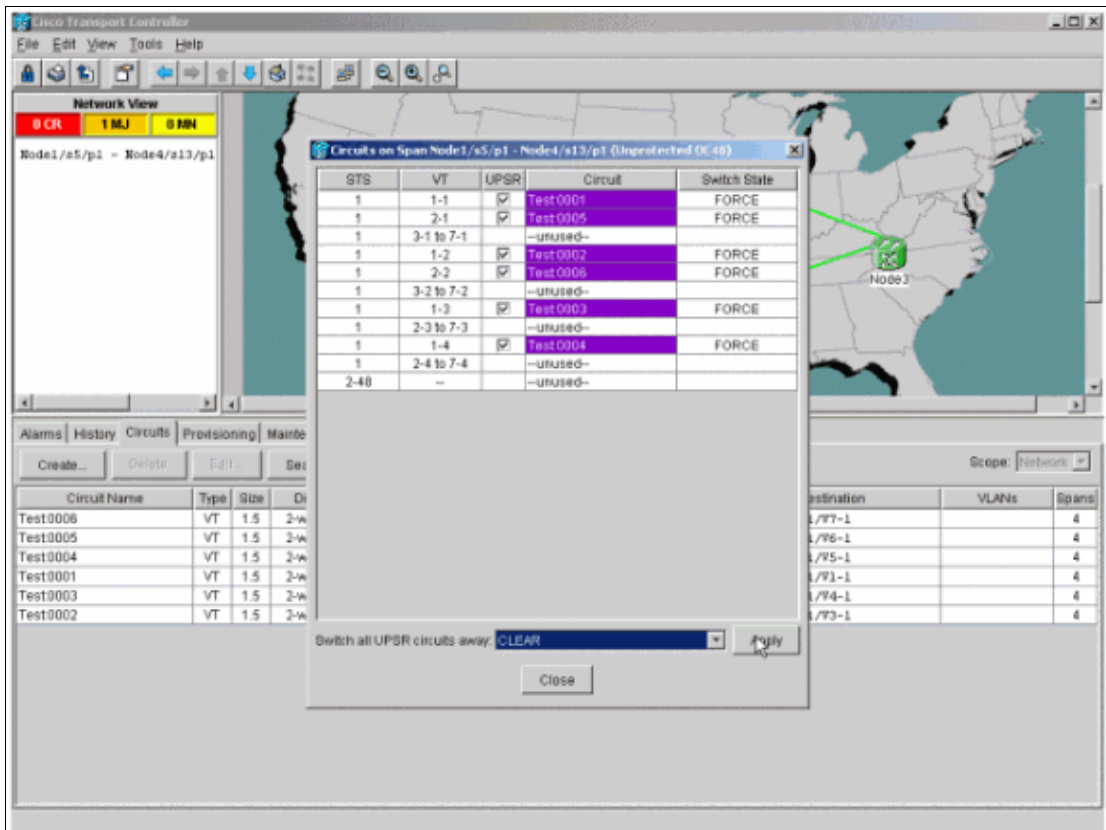
Complete these steps in order to release the protection switch:

1. Right-click on either of the spans adjacent to the new Node4 and choose **Circuits**.

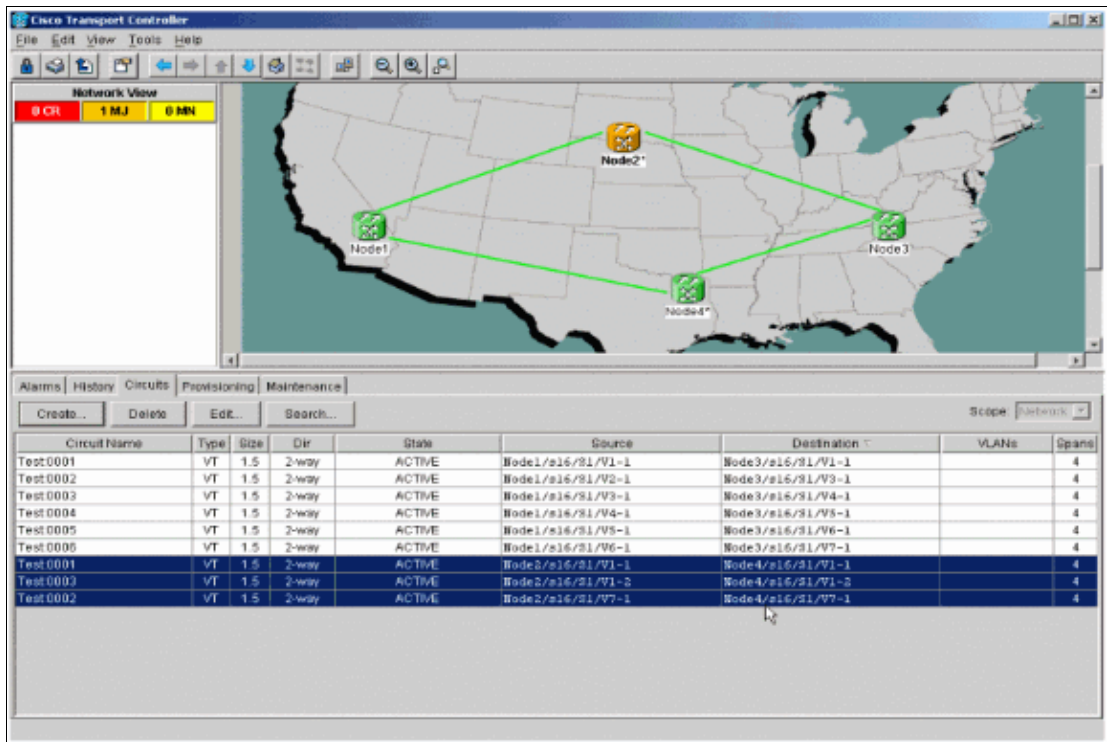


2. From the **UPSR Switch** drop-down menu, choose **Clear** and then **Apply**.

Click **Yes** when the confirmation dialog box appears.

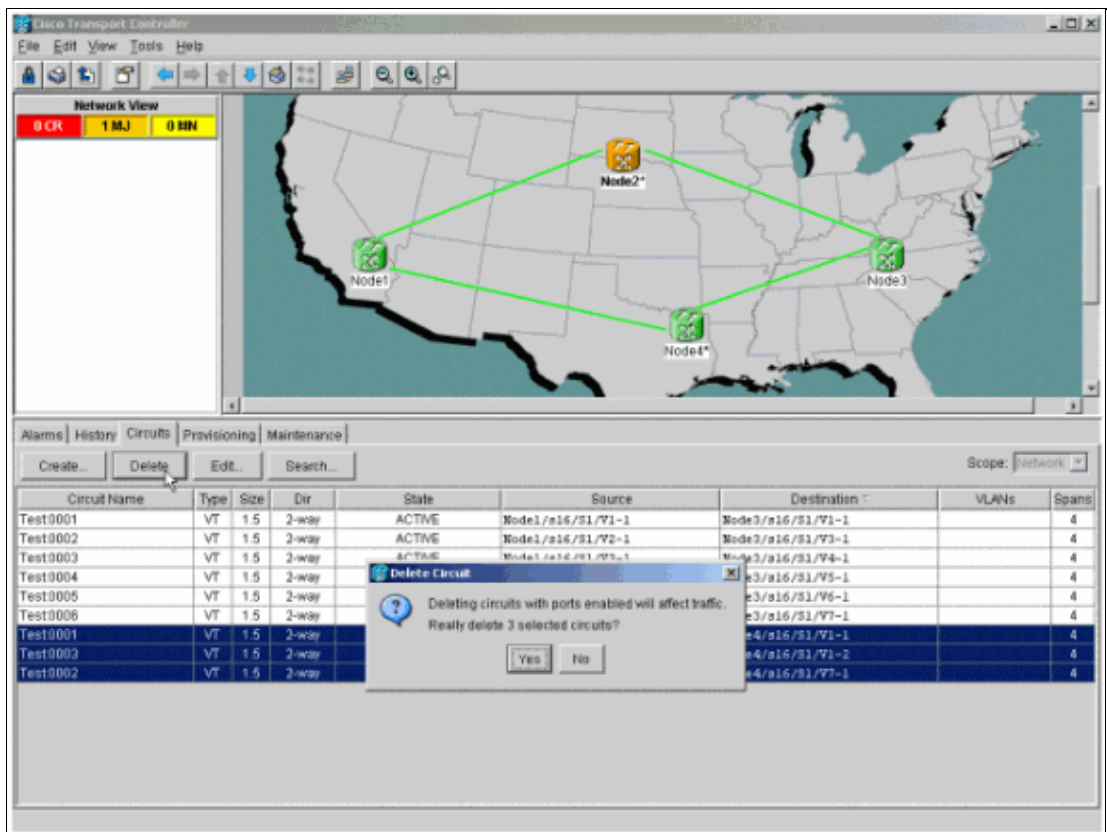


3. Click **OK** in the information dialog box.



2. Click on the circuit to highlight it in order to delete these circuits, then click **Delete**.

Click **Yes** when the confirmation dialog box appears.

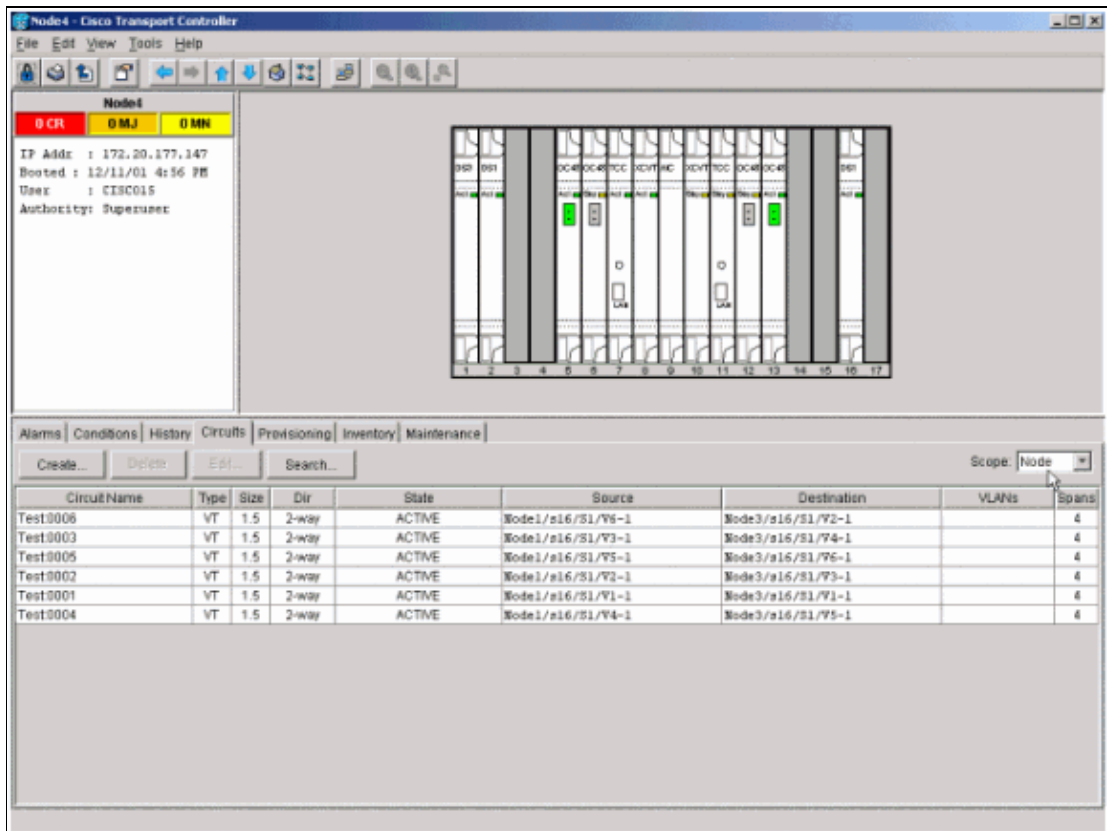


3. Click **OK** when the informational dialog box appears.

Press the **Ctrl** or **Shift** key in order for multiple circuits to be highlighted for deletion.

- Identify and document the parameters for any circuits that change STS or VT while they pass through the node (Node4) to be removed.

These circuits are deleted and recreated in the final step of this procedure. This task is best accomplished from the shelf view of the node (Node4) to be removed.

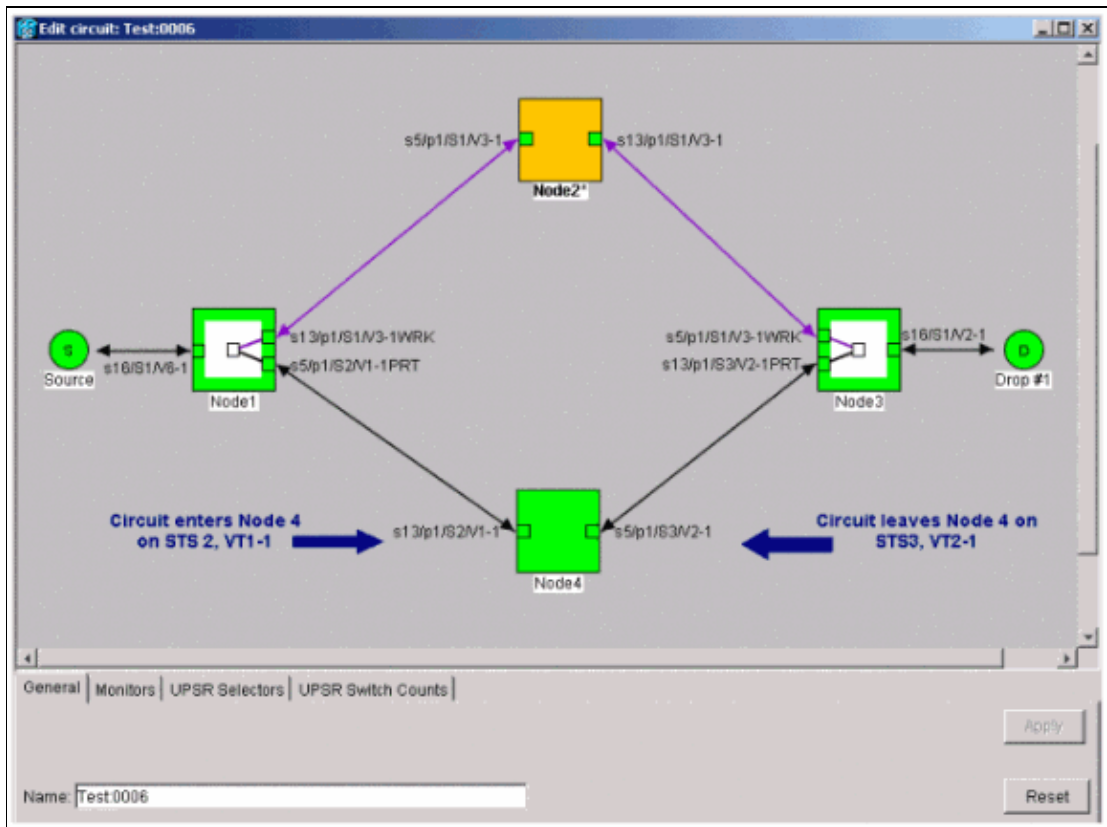


- At the Shelf view, click **Circuits** and ensure that the **Scope** is set to **Node** from the drop down menu.

This allows you to only see circuits that pass through or drop at this node.

- Individually highlight each circuit and click **Edit**.

From the Edit window make sure the **Show Detailed Map** box is checked. You should now see on which STS and VT the circuit enters and leaves the node. If these do not match then document the circuit for deletion and recreation in the final step 15 of this procedure.



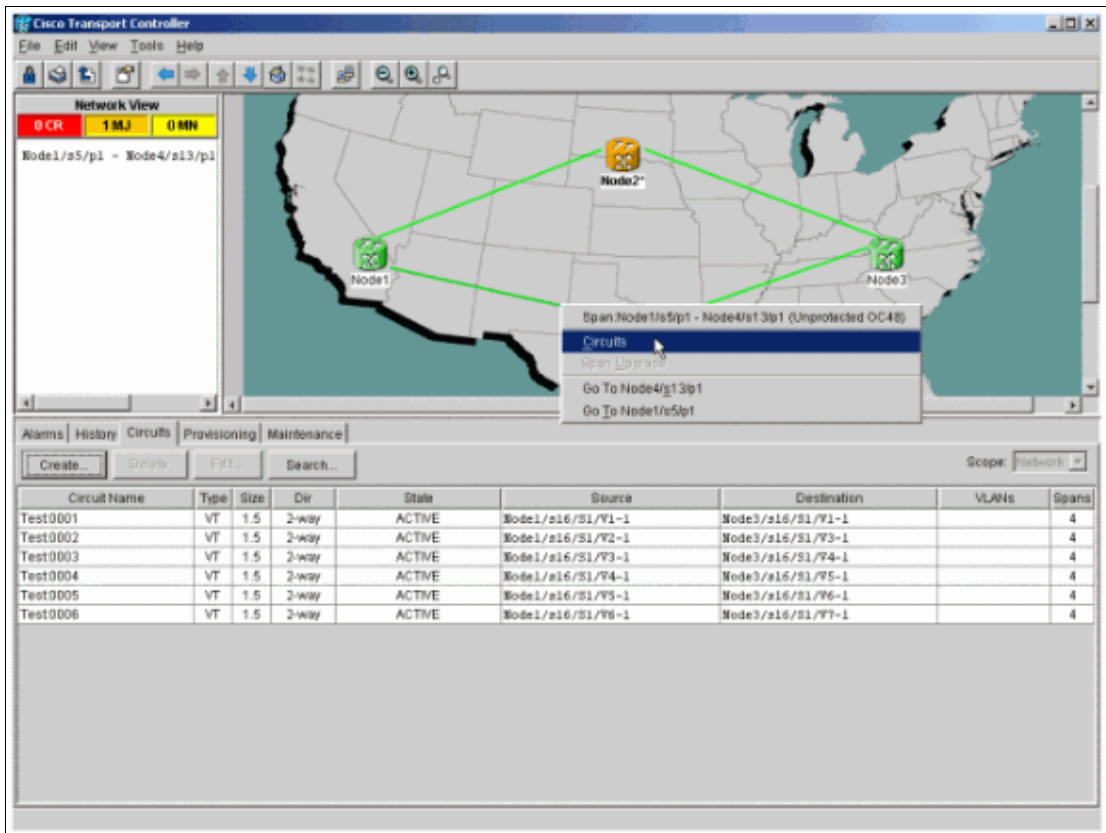
In the previous screenshot from the lab setup, you can see that the circuit actually changes STS and VT through Node4. It enters through **STS2, VT1-1**, and exits via **STS3, VT2-1**. This circuit needs to be deleted and recreated at the last step in this procedure.

7. Repeat step 6 for all circuits that appear in the node view.
8. Manually force traffic away from all spans connected to Node4.
9. A forced protection switch can cause service disruption if the UPSR ring is not free of errors.

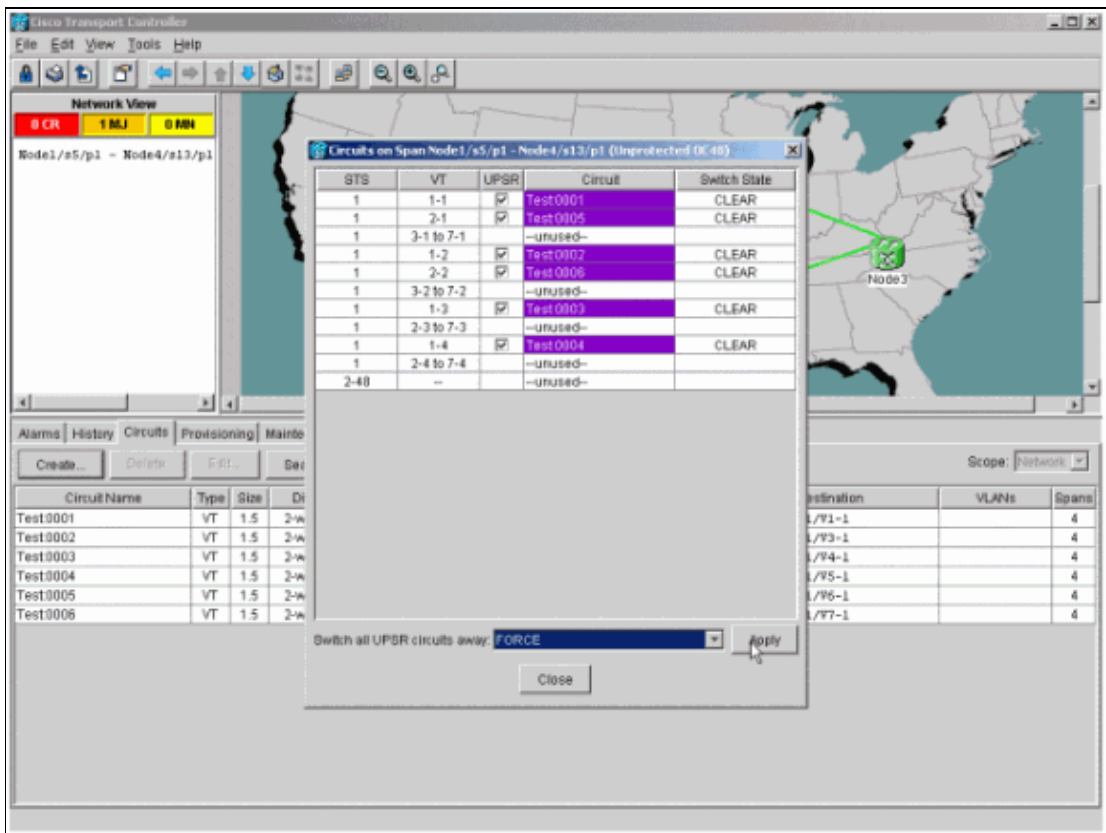
Check the **PM Stats** for all of the optical cards in the UPSR:

- ◆ Log into each shelf in the ring.
 - ◆ Click on each **UPSR optical card**.
 - ◆ Choose **Performance**.
 - ◆ Click **Refresh**.
 - ◆ Verify that all fields contain zero values.
- Caution:** Traffic is unprotected during a forced protection switch.

10. From the Network view, right-click on a span that connects to Node4 and choose **Circuits** from the menu.



11. From the **UPSR Switch Selector**, choose **Force** from the drop-down menu and then click **Apply**.



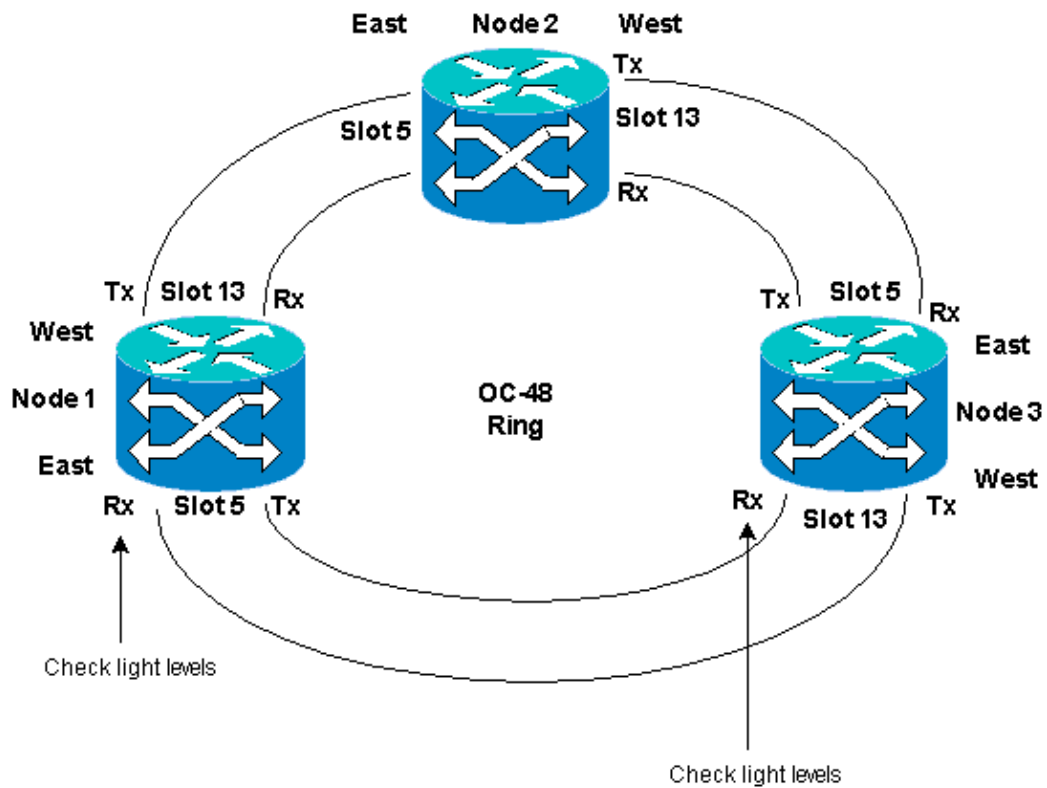
Click **Yes** in the confirmation dialog box. This forces all traffic from the span, which causes it to take an alternate path around the other side of the ring.

12. Repeat step 11 for all spans that connect to Node4.

Once completed, Node4 is completely isolated.

13. Reconnect the fibers between adjacent Node1 and Node3.

In this example, you connect Slot 5 Node1 to slot 13 Node3.



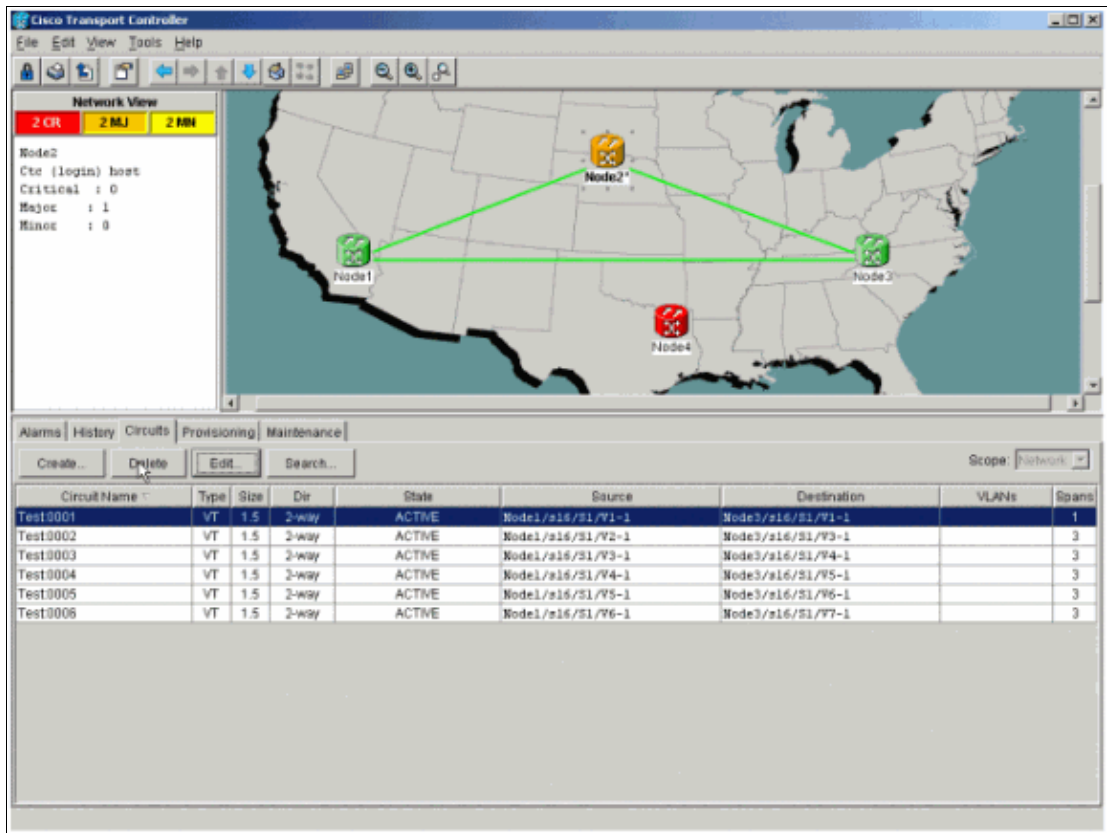
When you reconnect fibers to adjacent nodes, it is a recommended best practice to first connect only the Tx fibers and check the light levels before you connect the Rx fibers. Rx levels can be found in the Card Reference section of the Cisco ONS 15454 Reference Guide, Release 3.4.

14. Once all fibers are reconnected, open the **Alarms** tab of the newly connected Node3 and Node4 and verify that the span cards are free of alarms.

Resolve any alarms before you proceed.

15. Now delete and rebuild the circuits identified in step 4. From the Network view, locate each circuit.

One at a time, highlight the circuit and click the **Delete** button. After circuit deletion is complete, click **OK** in the dialog box. Click the **Create** button and rebuild the circuit with the same parameters documented in step 4 of this procedure.



Related Information

- [Best Practices When Configuring Circuits on the ONS 15454](#)
- [Technical Support & Documentation – Cisco Systems](#)

All contents are Copyright © 2006–2007 Cisco Systems, Inc. All rights reserved. Important Notices and Privacy Statement.

Updated: Jul 24, 2007

Document ID: 18480