

# Troubleshooting TFTP Problems on Resource Manager Essentials

Document ID: 18246

---

## Introduction

### Prerequisites

Requirements

Components Used

Conventions

### Configuring Configuration Archive for TFTP as the Preferred Protocol

Correct Device Attributes -- SNMP and Telnet Credentials

### TFTPD

Running TFTP

Entry not Found

Verifying TFTP Operation

Verifying that CW2000 can use this TFTP

### Related Information

---

## Introduction

The configuration archive can use three different transport protocols to download configurations from devices.

1. Trivial File Transfer Protocol (TFTP)
2. Telnet
3. Remote Copy Protocol (RCP)

The configuration archive uses the first protocol on the list. If that protocol fails, the archive uses the second protocol and then the third, until it finds a transport protocol that can download the configuration. Software Image Management (SWIM) uses the TFTP to copy images from devices to the CiscoWorks 2000 (CW2000) server.

This document explains how to configure and troubleshoot the configuration archive while using TFTP on UNIX. NT users do not have to worry about this because CW2000 installs a TFTP service for you. If you are using SWIM and you configured RCP, refer to Configuring RCP as Transport Protocol in Cisco Resource Manager Essentials.

## Prerequisites

### Requirements

There are no specific requirements for this document.

### Components Used

The information in this document applies to RME versions 3.0, 3.1, 3.2, and 3.3 on Windows and Solaris platforms.

The information in this document was created from the devices in a specific lab environment. All of the devices used in this document started with a cleared (default) configuration. If your network is live, make sure

that you understand the potential impact of any command.

## Conventions

Refer to Cisco Technical Tips Conventions for more information on document conventions.

# Configuring Configuration Archive for TFTP as the Preferred Protocol

Follow these steps to set TFTP as the preferred protocol in configuration archive:

1. Log on to CW2000 as **admin**.
2. Select **resource manager essentials**.
3. Select **administration**.
4. Select **configuration management**.
5. Select **general setup**.
6. Verify TFTP is the first protocol.

### Configuration Manager Admin

#### Transport Protocol Order

There are three protocols used by the configuration archive to download configurations from the device: TFTP, RCP, and Telnet. Set the protocol order.

TFTP  
TELNET  
RCP

UP DOWN

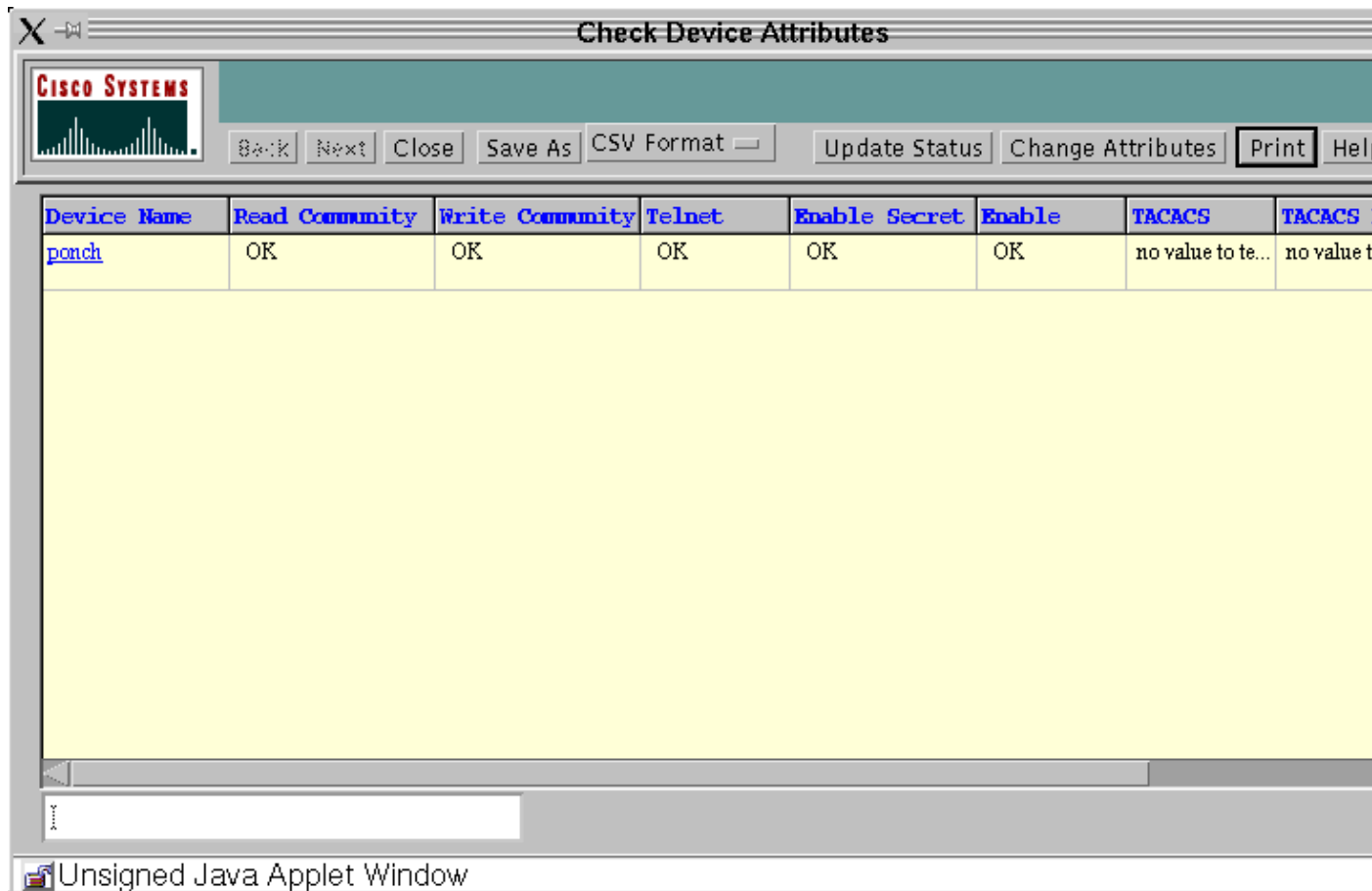
Disable RCP

Apply

## Correct Device Attributes -- SNMP and Telnet Credentials

Follow these steps to verify that your device attributes are correct:

1. Logon to CW2000 as **admin**.
2. Select **resource manager essentials**.
3. Select **administration**.
4. Select **inventory**.
5. Select **device attributes**.
6. Select your device and click **finish**.



## TFTPD

TFTPD is a server that supports the Internet TFTP. This server is normally started by **inetd** (daemon) and operates at the port indicated in the TFTP Internet service description in the **/etc/inetd.conf** file. By default, the entry for TFTP in **etc/inetd.conf** is commented out.

### Running TFTPD

Verify that the **/etc /inetd.conf** has the following entries and that the entry starting with **TFTP** is not commented out (a hash sign "#" at the beginning is used to comment out the entry).

```
# Next line added by Cisco Works Resource Manager postinstall.  
tftp dgram udp wait root /usr/sbin/in.tftpd in.tftpd -s /tftpboot
```

**Note:** CW2000 requires the **-s**.

You may see an entry like this in **inetd.conf**:

```
tftp  dgram  udp  wait  root  /usr/sbin/in.tftpd  in.tftpd -s \  
/tftpboot
```

However, CW2000 doesn't recognize it when the tftpboot directory entry is split between lines. You can have multiple tftpboot directories and can enter them as shown below.

```
tftp  dgram  udp  wait  root  /usr/sbin/in.tftpd  in.tftpd -s /tftpboot /ust/tftpboot
```

CW2000 picks the first directory you list. For example, if you want CW2000 to use **/usr/tftpboot** as tftpd, then change the above entry to the following:

```
tftp  dgram  udp  wait  root  /usr/sbin/in.tftpd  in.tftpd -s /ust/tftpboot /tftpboot
```

## Entry not Found

If you cannot find this entry, you can add it manually. Make sure that you use tabs as separators, except with the **-s** you must use spaces.

If the entry is there, but commented out, remove the comment (**#**) and save the file.

After you have finished modifying the file, stop and restart the **inetd** as follows:

```
# ps -ef | grep inetd  
root  134      1  0   Jun 21 ?   0:06 /usr/sbin/inetd -s
```

Where 134 is the PID for the **inetd** (your server may have a different PID).

```
# kill -HUP 134
```

This command sends a HUB signal to the **inetd** process so that the process is reinitiated and rereads the **inetd.conf** file.

## Verifying TFTP Operation

Follow these steps to be certain TFTP is operational on your system:

1. Go to the directory you are using for your TFTP server (possibly **/tftpboot**).

```
# cd / tftpboot
```

2. Create an empty file.

```
# touch test.cfg
```

3. Change the permission on this file as follows:

```
# chmod 666 test.cfg
```

4. Go to one of your devices and do the following:

**Note:** This example is done on a 3640 router, if you have a switch please consult the documentation for the proper syntax.

```
ponch#copy running-config tftp:  
Address or name of remote host []? 172.17.246.240  
  
! -- IP address of CW2000 server
```

```
Destination filename [ponch-config]? test.cfg
!!!
5237 bytes copied in 1.44 secs (5237 bytes/sec)ponch#
```

The exclamation marks (!!!) signify that the copy to the TFTP server was successful.

## Verifying that CW2000 can use this TFTP

Follow these steps to verify that CW2000 can use this TFTP successfully:

1. Issue this command to verify that you have enough disk space:

```
# df -k /tftpboot
Filesystem kbytes  used    avail    capacity  Mounted on
/dev/dsk/c0t0d0s0 7989885 5802105 2107882    74%      /
```

2. Verify that the proper permissions are set on the following files:

```
# ls -l /etc/inetd.conf
lrwxrwxrwx  1 root  root    17 Dec  8  2000 /etc/inetd.conf -> ./inet/
inetd.conf
```

```
# ls -l /etc/inet/inetd.conf
-rw-r--r--  1 root    sys    5270 Nov 18 22:22 /etc/inet/inetd.conf
```

**Note:** The permissions for both files should be exactly like the lines above.

```
# ls -l | grep tftpboot
drwxrwxrwx  3 root  other 6656 Dec 10 09:20 tftpboot/
```

3. Use the following command to verify that CW2000 knows the location of the TFTP home directory:

```
#!/opt/CSCOpX/bin/perl /opt/CSCOpX/objects/cmfb/bin/tftpSvcS.pm
/tftpboot#
```

Verify that the command returns the path to the home directory of the TFTP. In the above example the command returned `/tftpboot`, which is the TFTP home directory.

---

## Related Information

- [Cisco Network Management CiscoWorks](#)
- [Technical Support & Documentation – Cisco Systems](#)

---

[Contacts & Feedback](#) | [Help](#) | [Site Map](#)

© 2008 – 2009 Cisco Systems, Inc. All rights reserved. [Terms & Conditions](#) | [Privacy Statement](#) | [Cookie Policy](#) | [Trademarks of Cisco Systems, Inc.](#)

---

Updated: Aug 31, 2009

Document ID: 18246

---