

Table of Contents

<u>Configuring Cisco 700 Series IDSL Routers to Use PPP</u>	1
<u>Document ID: 17877</u>	1
<u>Introduction</u>	1
<u>Before You Begin</u>	1
<u>Conventions</u>	1
<u>Prerequisites</u>	1
<u>Components Used</u>	1
<u>Background Information</u>	2
<u>Configure</u>	2
<u>Network Diagram</u>	2
<u>Configurations</u>	2
<u>Verify</u>	4
<u>Troubleshoot</u>	4
<u>Related Information</u>	4

Configuring Cisco 700 Series IDSL Routers to Use PPP

Document ID: 17877

Introduction

Before You Begin

- Conventions

- Prerequisites

- Components Used

- Background Information

Configure

- Network Diagram

- Configurations

Verify

Troubleshoot

Related Information

Introduction

The sample configuration in this document shows a Cisco 700 Series ISDN Digital Subscriber Line (IDSL) router connecting to a Digital Subscriber Line Access Multiplexer (DSLAM) and terminating on a Cisco 6400 Universal Access Concentrator (UAC). The Cisco 766 has been configured with routing and Point-to-Point Protocol (PPP) encapsulation.

Before You Begin

Conventions

For more information on document conventions, see the Cisco Technical Tips Conventions.

Prerequisites

There are no specific prerequisites for this document.

Components Used

Cisco 700 series routers do not use Cisco IOS® Software. For information about the Cisco 700 series router software they do use and about commands, refer to Cisco 700 Series Router Software Release Notes.

Note: The Cisco 762, 766, 772, and 776 support IDSL using software versions 4.1 and later.

The information presented in this document was created from devices in a specific lab environment. All of the devices used in this document started with a cleared (default) configuration. If you are working in a live network, ensure that you understand the potential impact of any command before using it.

Background Information

The Cisco 766 is end-of-sale (EOS), but this configuration will be useful if you are still using Cisco 700 series routers.

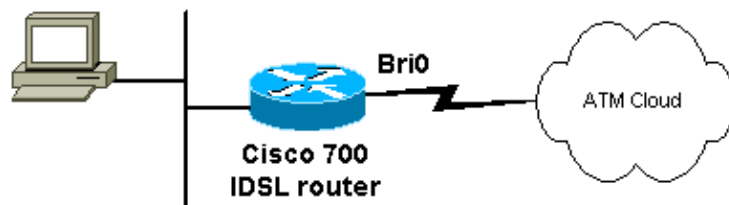
Configure

In this section, you are presented with the information to configure the features described in this document.

Note: To find additional information on the commands used in this document, use the Command Lookup Tool (registered customers only).

Network Diagram

This document uses the network setup shown in the diagram below.



Configurations

The Internet Service Provider (ISP) has given the subscriber IP address 192.168.221.13 and subnet mask 255.255.255.252. This configuration sets the loop speed to 128 kbps but 56, 64, and 144-kbps speeds are also supported.

```
Cisco 700 IDSL

set system 770

!--- Configures the router name as the system prompt. For
!--- Point-to-Point Protocol (PPP) authentication use the
!--- set system <system name> command.

set ppp authentication in chap
set ppp authentication out chap

!--- Sets the PPP Challenge Handshake Authentication Protocol (CHAP)
!--- authentication for incoming and outgoing ISDN calls.
!--- (You can also configure the router for PAP authentication.)

set ppp secret client
sanjose
sanjose

!--- CHAP password sent in response to a CHAP authentication
!--- challenge from a remote router.

set ppp secret host
sanjose
```

```
sanjose

!--- The CHAP password the router expects a remote router to supply
!--- to successfully pass CHAP authentication.

set switch perm128

!--- Sets a 128-kbps leased-line mode.

cd lan

!--- Creates a profile. To enter an existing profile or return to system
!--- mode, use the cd command (also known as the change user command).

set ip address 192.168.221.13

!--- Sets the IP address.

set ip netmask 255.255.255.252

!--- Sets the subnet mask for an interface.
!--- To delete the subnet mask for an interface, enter
!--- this command with 0.0.0.0 as the subnet node.

set ip routing on

!--- Enables IP routing.

set bridging off

!--- Determines what to do with packets that cannot be routed.

cd

!--- This is a navigation command used to switch between user and system
!--- profiles. The command changes the router command prompt to the profile
!--- matching the supplied username. If no username is supplied, the command
!--- returns the router command prompt to the system level.

set user 7500

!--- Creates a new user-defined profile or modifies the name
!--- of an existing user-defined profile.

set ip route des 0.0.0.0/0 gateway 192.168.220.2 propagate on cost 2

!--- Sets the default gateway IP address to 192.168.220.2.

reb
```

Verify

There is currently no verification procedure available for this configuration.

Troubleshoot

There is currently no specific troubleshooting information available for this configuration.

Related Information

- [DSL Technical Support](#)
 - [Product Support](#)
 - [Technical Support – Cisco Systems](#)
-

All contents are Copyright © 1992–2005 Cisco Systems, Inc. All rights reserved. Important Notices and Privacy Statement.

Updated: May 17, 2005

Document ID: 17877
