

Configuring Multiple DSPU to Upstream 3172

Document ID: 17575

Introduction

Prerequisites

- Requirements

- Components Used

- Conventions

Configure

- Network Diagram

- Configurations

Verify

Troubleshoot

Related Information

Introduction

This document provides a sample configuration for how to configure multiple Downstream Physical Units (DSPUs) to the Upstream 3172.

Prerequisites

Requirements

There are no specific requirements for this document.

Components Used

This document is not restricted to specific software and hardware versions.

Conventions

Refer to Cisco Technical Tips Conventions for more information on document conventions.

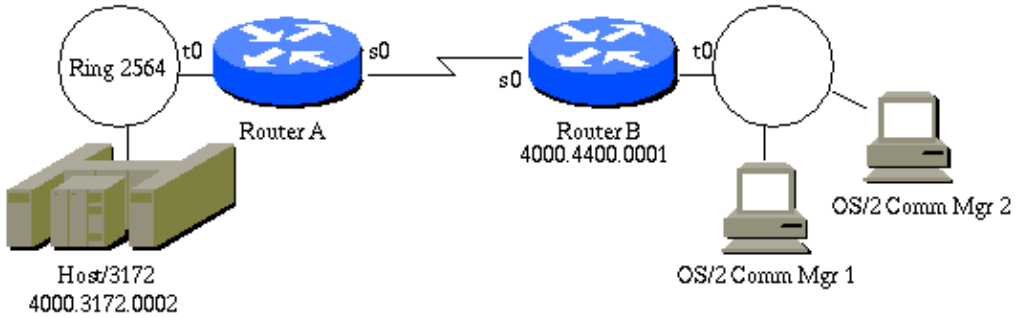
Configure

In this section, you are presented with the information to configure the features described in this document.

Note: Use the Command Lookup Tool (registered customers only) to find more information on the commands used in this document.

Network Diagram

This document uses this network setup:



Configurations

This document uses these configurations:

- RouterA
- RouterB
- CommMgr/2 #1 def
- CommMgr/2 #2 def
- VTAM Switched Major Node def

RouterA
<pre>hostname RouterA source-bridge ring-group 2989 dlsw local-peer peer-id 198.92.0.235 dlsw remote-peer 0 tcp 192.190.226.148 interface Serial0 ip address 193.100.1.1 255.255.255.0 interface TokenRing0 ip address 198.92.0.235 255.255.255.0 ring-speed 16 source-bridge 2564 1 2989 source-bridge spanning</pre>

RouterB
<pre>hostname RouterB source-bridge ring-group 2989 dlsw local-peer peer-id 192.190.226.148 dlsw remote-peer 0 tcp 198.92.0.235 dspu vdlc 2989 4000.4400.0001 dspu vdlc enable-host lsap 4 dspu host HOST3172 xid-snd 05d05197 rmac 4000.3172.0002 lsap 4 dspu pool pool3172 host HOST3172 lu 2 16 dspu vdlc start VDLC dspu default-pu dspu lu 2 4 pool pool3172 interface Serial0 ip address 193.100.1.2 255.255.255.0 interface TokenRing0 ip address 192.190.226.148 255.255.255.0</pre>

```
no ip route-cache
ring-speed 16
```

```
source-bridge 1 1 2989
dspu enable-pu lsap 4
dspu enable-pu lsap 8
```

CommMgr/2 #1 def

Communications Manager config

>From the CM Setup icon
Click on the setup button
Specify the config name, click on OK
Specify the config type, click on Configure...

Parameters

Netid - NETA
Local Node Name - DSPUA
Local Node ID - 05DAA005
LAN Destination - 4000.4400.0001

CommMgr/2 #2 def

Communications Manager config

>From the CM Setup icon
Click on the setup button
Specify the config name, click on OK
Specify the config type, click on Configure...

Parameters

Netid - NETA
Local Node Name - DSPUA
Local Node ID - 05D10001
LAN Destination - 400044000001

VTAM Switched Major Node def

```
SWCERT5A VBUILD TYPE=SWNET,MAXGRP=4,MAXNO=4
```

*

```
DSPUA    PU      ADDR=01,
          PUTYPE=2,
          IDBLK=05D,
          IDNUM=05197,
          MODETAB=ALAMODE,
          DLOGMOD= SX32702S,
          DISCNT=(NO),
          USSTAB=USSSNA,
          ISTATUS=ACTIVE,
          MAXDATA=521,
          IRETRY=YES,
          MAXOUT=7,
          PASSLIM=5,
          MAXPATH=4
```

*

```
DSPAL00 LU      LOCADDR=02
DSPAL01 LU      LOCADDR=03
DSPAL02 LU      LOCADDR=04
.
.
.
DSPAL20 LU      LOCADDR=22
```

Notes:

- This example uses DSPU over DLSw+ using Virtual Data-Link Control.
- DSPU is configured to accept connection from any device.
- Sniffer trace taken between CommMgr/2 and RouterB.

Verify

There is currently no verification procedure available for this configuration.

Troubleshoot

There is currently no specific troubleshooting information available for this configuration.

Related Information

- [Technical Support & Documentation – Cisco Systems](#)
-

[Contacts & Feedback](#) | [Help](#) | [Site Map](#)

© 2008 – 2009 Cisco Systems, Inc. All rights reserved. [Terms & Conditions](#) | [Privacy Statement](#) | [Cookie Policy](#) | [Trademarks of Cisco Systems, Inc.](#)

Updated: Jan 30, 2007

Document ID: 17575
