

# Configuring DSPU to Upstream 3172

Document ID: 17574

---

## Introduction

### Before You Begin

Conventions

Prerequisites

Components Used

Design Notes

### Configure

Network Diagram

Configurations

### Verify

### Troubleshoot

### Related Information

---

## Introduction

This document provides a sample configuration for configuring Downstream Physical Unit (DSPU) to upstream 3172.

## Before You Begin

### Conventions

For more information on document conventions, see the Cisco Technical Tips Conventions.

### Prerequisites

There are no specific prerequisites for this document.

### Components Used

This document is not restricted to specific software and hardware versions.

The information presented in this document was created from devices in a specific lab environment. All of the devices used in this document started with a cleared (default) configuration. If you are working in a live network, ensure that you understand the potential impact of any command before using it.

### Design Notes

- These configurations use Remote Source–Route Bridging (RSRB). DSPU can be used over Data Link Switching Plus (DLSw+) ( recommended ) using Virtual Data–Link Control (VDLC). Refer to Configuring DSPU and SNA Service Point Support for more information.
- DSPU is configured to use dedicated Logical Unit (LU) resources and allow connections from any device with a listed MAC address, the correct Exchange Identification (XID), and LSAP.
- A sniffer trace was taken between CommMgr/2 and RouterB.

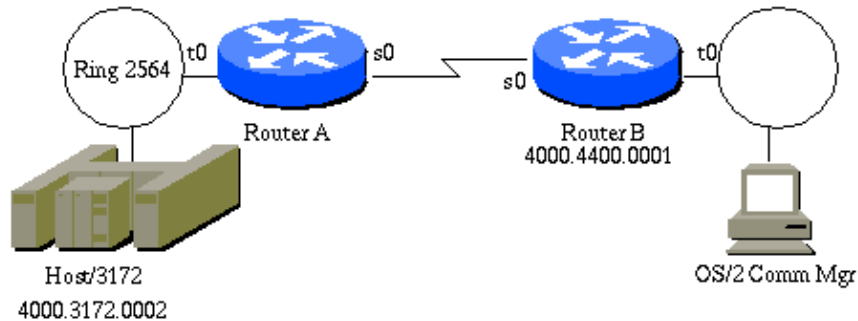
# Configure

In this section, you are presented with the information to configure the features described in this document.

**Note:** To find additional information on the commands used in this document, use the Command Lookup Tool (registered customers only).

## Network Diagram

This document uses the network setup shown in the diagram below.



## Configurations

This document uses the configurations shown below.

- RouterA
- RouterB
- CommMgr/2 def
- VTAM Switched Major Node def

RouterA
<pre>hostname RouterA  source-bridge ring-group 2989 source-bridge remote-peer 2989 tcp 198.92.0.235 source-bridge remote-peer 2989 tcp 192.190.226.148  interface Serial0 ip address 193.100.1.1 255.255.255.0  interface TokenRing0 ip address 198.92.0.235 255.255.255.0 ring-speed 16 source-bridge 2564 1 2989 source-bridge spanning</pre>

RouterB
<pre>hostname RouterB  source-bridge ring-group 2989 source-bridge remote-peer 2989 tcp 192.190.226.148 source-bridge remote-peer 2989 tcp 198.92.0.235  dspu rsrb 77 1 2989 4000.ffff.0001</pre>

```

dspu rsrb enable-host lsap 4
dspu host HOST3172 xid-snd 05d05197 rmac 4000.3172.0002 lsap 4 rsap 4
dspu rsrb start HOST3172
dspu pu CMSRVTOK xid-rcv 05d10001
dspu lu 2 4 host HOST3172 2

interface Serial0
ip address 193.100.1.2 255.255.255.0

interface TokenRing0
mac-address 4000.4400.0001
ip address 192.190.226.148 255.255.255.0
no ip route-cache
ring-speed 16
dspu enable-pu lsap 4
dspu enable-pu lsap 8

```

### CommMgr/2 def

Communications Manager config

```

>From the CM Setup icon
Click on the setup button
Specify the config name, click on OK
Specify the config type, click on Configure...

```

Parameters

```

Netid - NETA
Local Node Name - DSPUA
Local Node ID - 05D10001
LAN Destination - 400044000001

```

### VTAM Switched Major Node def

SWCERT5A VBUILD TYPE=SWNET,MAXGRP=4,MAXNO=4

\*

```

DSPUA    PU      ADDR=01,
          PUTYPE=2,
          IDBLK=05D,
          IDNUM=05197,
          MODETAB=ALAMODE,
          DLOGMOD= SX32702S,
          DISCNT=(NO),
          USSTAB=USSSNA,
          ISTATUS=ACTIVE,
          MAXDATA=521,
          IRETRY=YES,
          MAXOUT=7,
          PASSLIM=5,
          MAXPATH=4

```

\*

```

DSPAL00 LU      LOCADDR=02
DSPAL01 LU      LOCADDR=03
DSPAL02 LU      LOCADDR=04
.
.
.
DSPAL20 LU      LOCADDR=22

```

## Verify

There is currently no verification procedure available for this configuration.

# Troubleshoot

There is currently no specific troubleshooting information available for this configuration.

---

## Related Information

- **Technical Support – Cisco Systems**
- 

[Contacts & Feedback](#) | [Help](#) | [Site Map](#)

© 2008 – 2009 Cisco Systems, Inc. All rights reserved. [Terms & Conditions](#) | [Privacy Statement](#) | [Cookie Policy](#) | [Trademarks of Cisco Systems, Inc.](#)

---

Updated: Sep 09, 2005

Document ID: 17574

---