

Configuring DSPU to Upstream FEP

Document ID: 17572

Introduction

Prerequisites

Requirements

Components Used

Conventions

Configure

Verify

Troubleshoot

NetPro Discussion Forums – Featured Conversations

Related Information

Introduction

This document provides a sample configuration for configuring downstream physical unit (DSPU) to upstream front-end processor (FEP).

Prerequisites

Requirements

There are no specific requirements for this document.

Components Used

This document is not restricted to specific software and hardware versions.

The information in this document was created from the devices in a specific lab environment. All of the devices used in this document started with a cleared (default) configuration. If your network is live, make sure that you understand the potential impact of any command.

Conventions

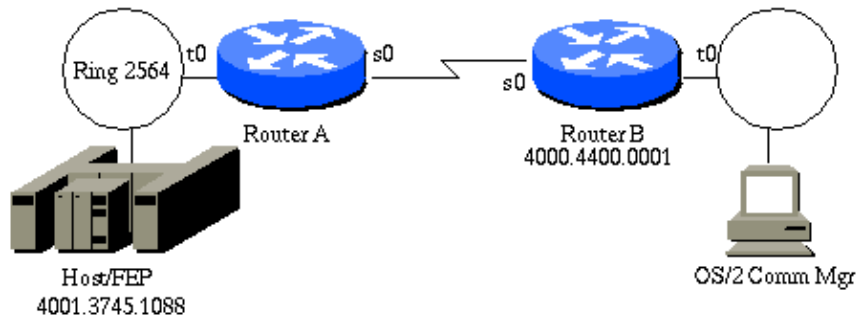
Refer to Cisco Technical Tips Conventions for more information on document conventions.

Configure

This example uses remote source-route bridging (RSRB). DSPU can be used over DLSw+ (recommended) using Virtual Data-Link Control.

DSPU is configured to use pooled LU resources and allow connections from any device specifying the correct XID and LSAP.

Note: Sniffer trace taken between CommMgr/2 and RouterB.



RouterA

```
hostname RouterA

source-bridge ring-group 2989
source-bridge remote-peer 2989 tcp 198.92.0.235
source-bridge remote-peer 2989 tcp 192.190.226.148

interface Serial0
ip address 193.100.1.1 255.255.255.0

interface TokenRing0
ip address 198.92.0.235 255.255.255.0
ring-speed 16
source-bridge 2564 1 2989
source-bridge spanning
```

RouterB

```
hostname RouterB

source-bridge ring-group 2989
source-bridge remote-peer 2989 tcp 192.190.226.148
source-bridge remote-peer 2989 tcp 198.92.0.235

dspu rsrb 77 1 2989 4000.ffff.0001
dspu rsrb enable-host lsap 4
dspu host HOST3745 xid-snd 05d05197 rmac 4001.3745.1088 lsap 4
dspu pool pool3745 host HOST3745 lu 2 16
dspu rsrb start HOST3745
dspu pu CMSRVOK xid-rcv 05d10001 lsap 4
dspu lu 2 16 pool pool3745

interface Serial0
ip address 193.100.1.2 255.255.255.0

interface TokenRing0
mac-address 4000.4400.0001
ip address 192.190.226.148 255.255.255.0
no ip route-cache
ring-speed 16
dspu enable-pu lsap 4
dspu enable-pu lsap 8
```

CommMgr/2 def

```
Communications Manager config

>From the CM Setup icon
Click on the setup button
Specify the config name, click on OK
```

Specify the config type, click on Configure...

Parameters

Netid - NETA
Local Node Name - DSPUA
Local Node ID - 05D10001
LAN Destination - 400044000001

VTAM Switched Major Node def

```
SWCERT5A VBUILD TYPE=SWNET,MAXGRP=4,MAXNO=4
*
DSPUA    PU      ADDR=01,
          PUTYPE=2,
          IDBLK=05D,
          IDNUM=05197,
          MODETAB=ALAMODE,
          DLOGMOD=SX32702S,
          DISCNT=(NO),
          USSTAB=USSSNA,
          ISTATUS=ACTIVE,
          MAXDATA=521,
          IRETRY=YES,
          MAXOUT=7,
          PASSLIM=5,
          MAXPATH=4
*
DSPAL00 LU      LOCADDR=02
DSPAL01 LU      LOCADDR=03
DSPAL02 LU      LOCADDR=04
.
.
.
DSPAL20 LU      LOCADDR=22
```

Verify

There is currently no verification procedure available for this configuration.

Troubleshoot

There is currently no specific troubleshooting information available for this configuration.

NetPro Discussion Forums – Featured Conversations

Networking Professionals Connection is a forum for networking professionals to share questions, suggestions, and information about networking solutions, products, and technologies. The featured links are some of the most recent conversations available in this technology.

NetPro Discussion Forums – Featured Conversations for IBM

Network Infrastructure: Enterprise Data Centers

Related Information

- [DSPU to Upstream FEP Sniffer Trace](#)
- [Technical Support & Documentation – Cisco Systems](#)

[Contacts & Feedback](#) | [Help](#) | [Site Map](#)

© 2007 – 2008 Cisco Systems, Inc. All rights reserved. [Terms & Conditions](#) | [Privacy Statement](#) | [Cookie Policy](#) | [Trademarks of Cisco Systems, Inc.](#)

Updated: Sep 09, 2005

Document ID: 17572
