

# IOS Router : Auth-proxy Authentication Inbound with ACS for IPsec and VPN Client Configuration

Document ID: 14294

---

## Introduction

### Prerequisites

- Requirements
- Components Used
- Conventions

### Configure

- Network Diagram
- Configuration
- VPN Client 4.8 Configuration
- Configure the TACACS+ Server Using Cisco Secure ACS
- Configure the Fallback Feature

### Verify

### Troubleshoot

### Related Information

---

## Introduction

The authentication proxy feature allows users to log in to a network or access the Internet via HTTP, with their specific access profiles automatically retrieved and applied from a TACACS+ or RADIUS server. The user profiles are active only when there is active traffic from the authenticated users.

This configuration is designed to bring up the web browser on 10.1.1.1 and aim it at 10.17.17.17. Because the VPN Client is configured to go through tunnel end-point 10.31.1.111 to get to the 10.17.17.x network, the IPsec tunnel is built and the PC gets the IP address out of the pool RTP-POOL (since mode-configuration is performed). Authentication is then requested by the Cisco 3640 Router. After the user enters a username and password (stored on the TACACS+ server at 10.14.14.3), the access list passed down from the server gets added to access list 118.

## Prerequisites

### Requirements

Before attempting this configuration, ensure that you meet these requirements:

- Cisco VPN Client is configured to establish an IPsec tunnel with the Cisco 3640 Router.
- The TACACS+ server is configured for authentication proxy. See the Related Information section for more information.

### Components Used

The information in this document is based on these software and hardware versions:

- Cisco IOS® Software Release 12.4
- Cisco 3640 Router
- Cisco VPN Client for Windows version 4.8 (any VPN Client 4.x and later should work)

**Note:** The `ip auth-proxy` command was introduced in Cisco IOS Software Release 12.0.5.T. This configuration was tested with Cisco IOS Software Release 12.4.

The information in this document was created from the devices in a specific lab environment. All of the devices used in this document started with a cleared (default) configuration. If your network is live, make sure that you understand the potential impact of any command.

## Conventions

For more information on document conventions, refer to the Cisco Technical Tips Conventions.

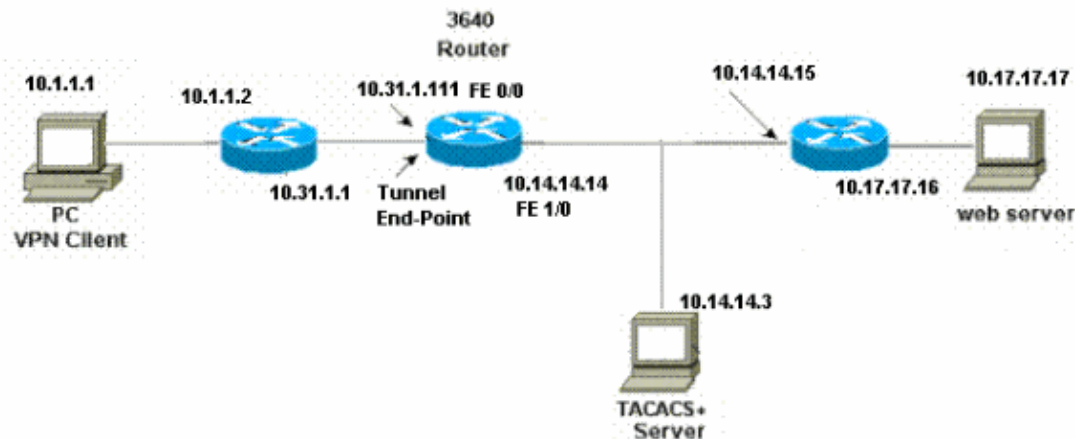
## Configure

In this section, you are presented with the information to configure the features described in this document.

**Note:** To find additional information on the commands used in this document, use the Command Lookup Tool (registered customers only).

## Network Diagram

This document uses this network setup:



## Configuration

### 3640 Router

```
Current configuration:
!
version 12.4
service timestamps debug uptime
service timestamps log uptime
no service password-encryption
!
hostname 3640
!

!--- The username and password is used during local authentication.

username rtpuser password 0 rtpuserpass
```

```
!--- Enable AAA.
```

```
aaa new-model
```

```
!--- Define server-group and servers for TACACS+.
```

```
aaa group server tacacs+ RTP  
  server 10.14.14.3  
!
```

```
!--- In order to set authentication, authorization, and accounting (AAA) authentication at login  
use the aaa authentication login command in global configuration mode
```

```
aaa authentication login default group RTP local  
aaa authentication login userauth local  
aaa authorization exec default group RTP none  
aaa authorization network groupauth local  
aaa authorization auth-proxy default group RTP  
enable secret 5 $1$CQHC$R/07uQ44E2JgVuCsOUWdG1  
enable password ww  
!  
ip subnet-zero  
!
```

```
!--- Define auth-proxy banner, timeout, and rules.
```

```
ip auth-proxy auth-proxy-banner http ^C  
Please Enter Your Username and Password:  
^C  
ip auth-proxy auth-cache-time 10  
ip auth-proxy name list_a http  
ip audit notify log  
ip audit po max-events 100  
cns event-service server  
!
```

```
!--- Define ISAKMP policy.
```

```
crypto isakmp policy 10  
  hash md5  
  authentication pre-share  
  group 2
```

```
!--- These commands define the group policy that  
!--- is enforced for the users in the group RTPUSERS.  
!--- This group name and the key should match what  
!--- is configured on the VPN Client. The users from this  
!--- group are assigned IP addresses from the pool RTP-POOL.
```

```
crypto isakmp client configuration group RTPUSERS  
  key cisco123  
  pool RTP-POOL  
!
```

```
!--- Define IPsec transform set and apply it to the dynamic crypto map.
```

```

crypto ipsec transform-set RTP-TRANSFORM esp-des esp-md5-hmac
!
crypto dynamic-map RTP-DYNAMIC 10
  set transform-set RTP-TRANSFORM
!

!--- Define extended authentication (X-Auth) using the local database.
!--- This is to authenticate the users before they can
!--- use the IPsec tunnel to access the resources.

crypto map RTPCLIENT client authentication list userauth

!--- Define authorization using the local database.
!--- This is required to push the 'mode configurations' to the VPN Client.

crypto map RTPCLIENT isakmp authorization list groupauth
crypto map RTPCLIENT client configuration address initiate
crypto map RTPCLIENT client configuration address respond
crypto map RTPCLIENT 10 ipsec-isakmp dynamic RTP-DYNAMIC
!
interface FastEthernet0/0
  ip address 10.31.1.111 255.255.255.0
  ip access-group 118 in
  no ip directed-broadcast

!--- Apply the authentication-proxy rule to the interface.

ip auth-proxy list_a
  no ip route-cache
  no ip mroute-cache
  speed auto
  half-duplex

!--- Apply the crypto-map to the interface.

crypto map RTPCLIENT
!
interface FastEthernet1/0
  ip address 10.14.14.14 255.255.255.0
  no ip directed-broadcast
  speed auto
  half-duplex
!

!--- Define the range of addresses in the pool.
!--- VPN Clients will have thier 'internal addresses' assigned
!--- from this pool.

ip local pool RTP-POOL 10.20.20.25 10.20.20.50
ip classless
ip route 0.0.0.0 0.0.0.0 10.14.14.15
ip route 10.1.1.0 255.255.255.0 10.31.1.1

!--- Turn on the HTTP server and authentication.
!--- This is required for http auth-proxy to work.

ip http server

```

```

ip http authentication aaa
!

!--- The access-list 118 permits ISAKMP and IPsec packets
!--- to enable the Cisco VPN Client to establish the IPsec tunnel.
!--- The last line of the access-list 118 permits communication
!--- between the TACACS+ server and the 3640 router to enable
!--- authentication and authorization. All other traffic is denied.

access-list 118 permit esp 10.1.1.0 0.0.0.255 host 10.31.1.111
access-list 118 permit udp 10.1.1.0 0.0.0.255 host 10.31.1.111 eq isakmp
access-list 118 permit tcp host 10.14.14.3 host 10.31.1.111
!

!--- Define the IP address and the key for the TACACS+ server.

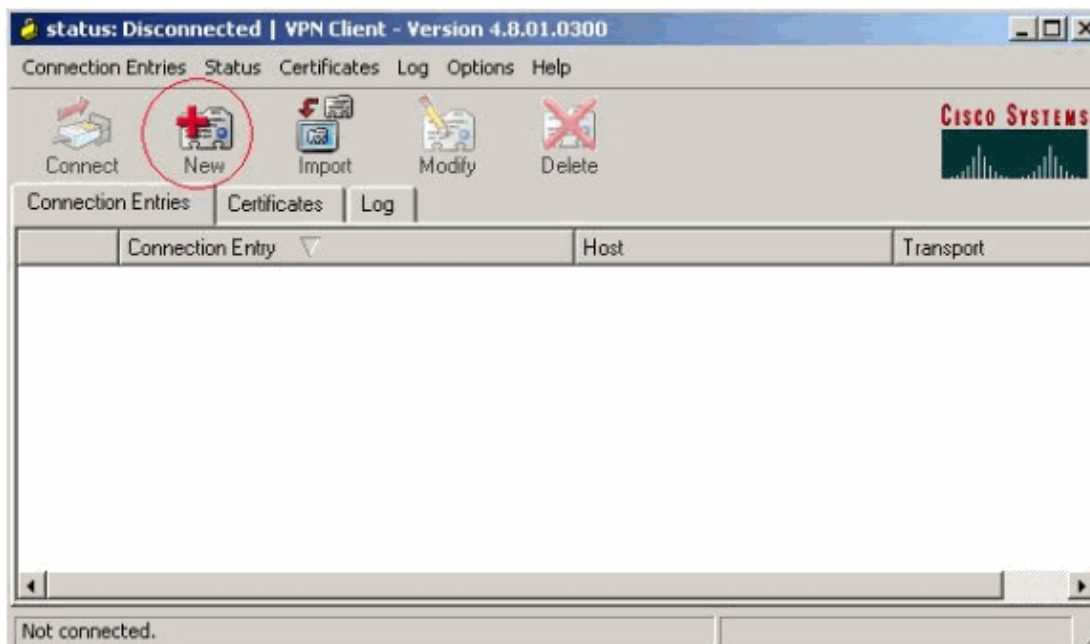
tacacs-server host 10.14.14.3 key cisco
!
line con 0
  transport input none
line aux 0
line vty 0 4
  password ww
!
end

```

## VPN Client 4.8 Configuration

Complete these steps in order to configure the VPN Client 4.8:

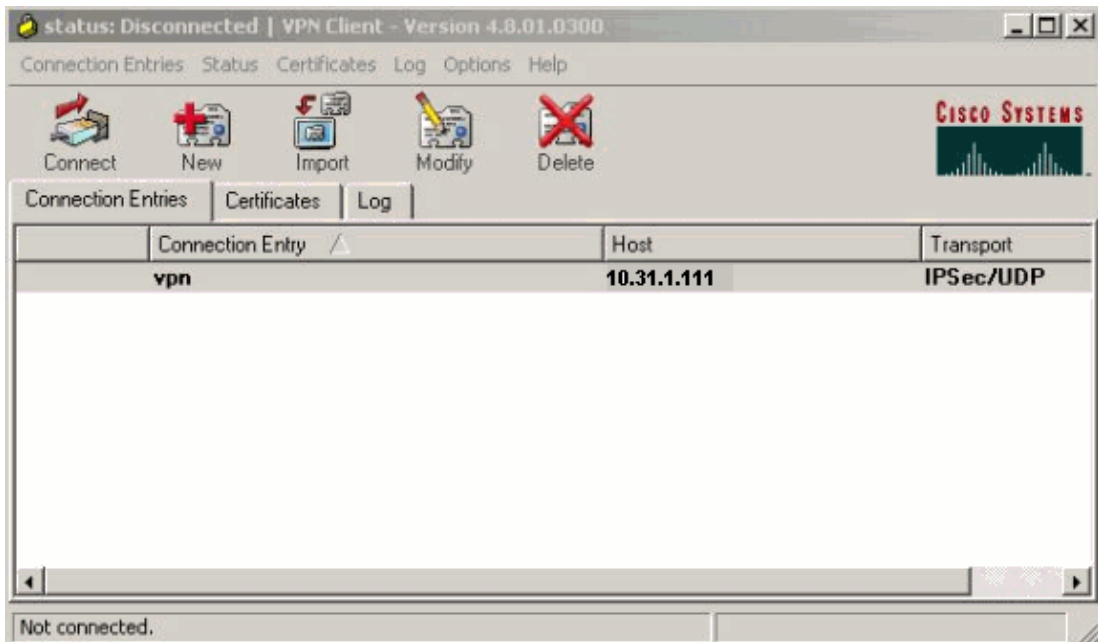
1. Choose **Start > Programs > Cisco Systems VPN Client > VPN Client**.
2. Click **New** to launch the Create New VPN Connection Entry window.



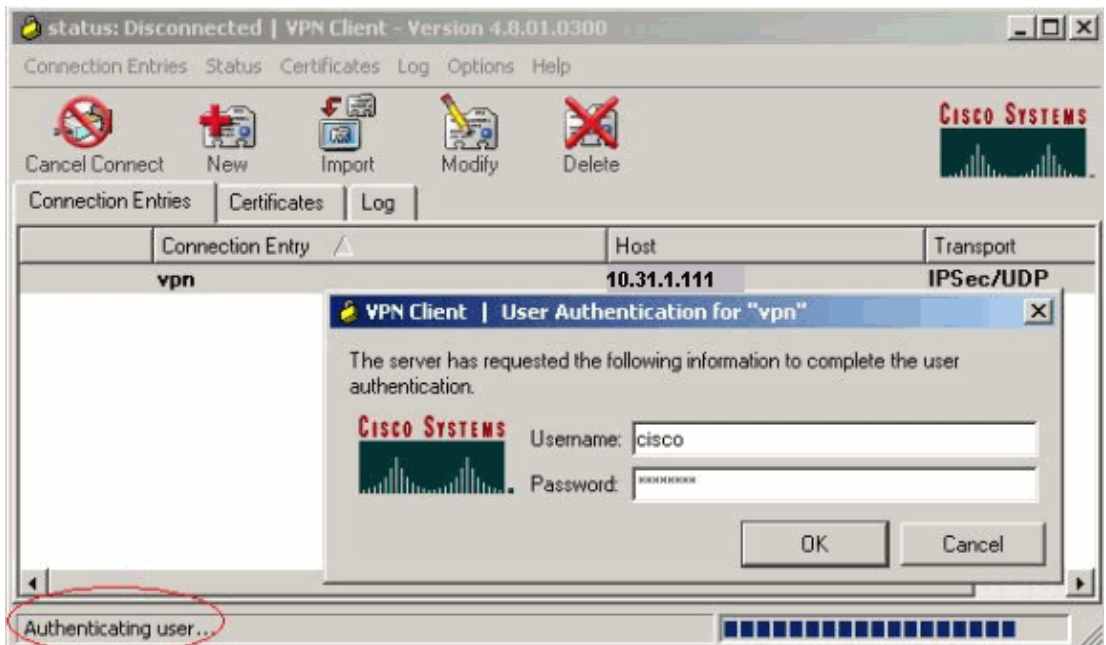
3. Enter the name of the Connection Entry along with a description. Enter the outside IP address of the router in the Host box. Then enter the VPN Group name and password, and click **Save**.



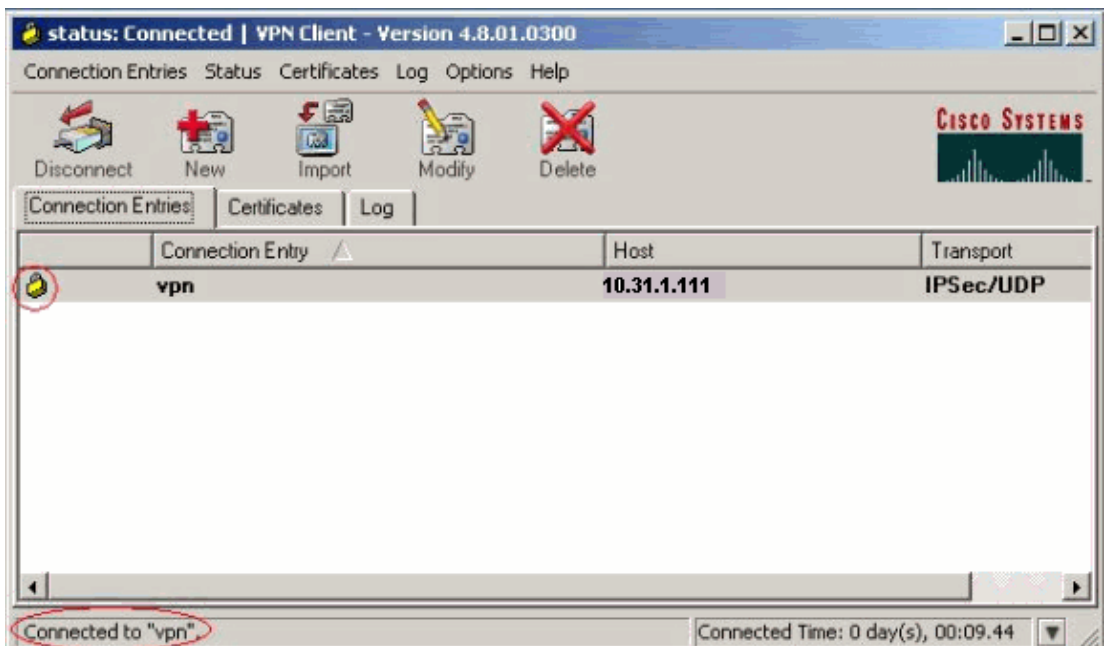
4. Click on the connection you would like to use and click **Connect** from the VPN Client main window.



5. When prompted, enter the Username and Password information for xauth and click **OK** to connect to the remote network.



The VPN Client gets connected with the router at the central site.



## Configure the TACACS+ Server Using Cisco Secure ACS

Complete these steps in order to configure TACACS+ in a Cisco Secure ACS:

1. You must configure the router to locate the Cisco Secure ACS in order to check the user credentials.

For example:

```
3640(config)#
aaa group server tacacs+ RTP

3640(config)#
tacacs-server host 10.14.14.3 key cisco
```

2. Choose **Network Configuration** on the left and click **Add Entry** to add an entry for the router in either the TACACS+ server database. Choose the server database according to the router configuration.

**CISCO SYSTEMS**

## Network Configuration

Select

AAA Client Hostname	AAA Client IP Address	Authenticate Using
<a href="#">3640</a>	10.14.14.14	TACACS+ (Cisco IOS)
<a href="#">PDX-A</a>	172.16.1.85	RADIUS (Cisco IOS/PIX)
<a href="#">VPN3000</a>	172.16.5.2	TACACS+ (Cisco IOS)
<a href="#">WLC</a>	172.16.1.31	RADIUS (Cisco Aironet)
<a href="#">WLC Main</a>	172.16.1.50	RADIUS (Cisco Aironet)

Add Entry Search

3. The key is used to authenticate between the 3640 Router and Cisco Secure ACS server. If you want to select the TACACS+ protocol for authentication, then choose **TACACS+ (Cisco IOS)** in the Authenticate Using drop down menu.



# Network Configuration

Edit

User Setup

Group Setup

Shared Profile Components

Network Configuration

System Configuration

Interface Configuration

Administration Control

External User Databases

Reports and Activity

Online Documentation

## Add AAA Client

AAA Client Hostname	<input type="text" value="3640"/>
AAA Client IP Address	<input type="text" value="10.14.14.14"/>
Key	<input type="text" value="cisco123"/>
Authenticate Using	<input type="text" value="TACACS+ (Cisco IOS)"/>
<input type="checkbox"/> Single Connect TACACS+ AAA Client (Record stop in accounting on failure).	
<input type="checkbox"/> Log Update/Watchdog Packets from this AAA Client	
<input type="checkbox"/> Log RADIUS Tunneling Packets from this AAA Client	
<input type="checkbox"/> Replace RADIUS Port info with Username from this AAA Client	

4. Enter the username in the User field in the Cisco Secure database, then click **Add/Edit**.

In this example, the username is rtpuser.



# User Setup

## Select

- User Setup
- Group Setup
- Shared Profile Components
- Network Configuration
- System Configuration
- Interface Configuration
- Administration Control
- External User Databases
- Reports and Activity
- Online Documentation

User:

List users beginning with letter/number:

[A](#) [B](#) [C](#) [D](#) [E](#) [F](#) [G](#) [H](#) [I](#) [J](#) [K](#) [L](#) [M](#)  
[N](#) [O](#) [P](#) [Q](#) [R](#) [S](#) [T](#) [U](#) [V](#) [W](#) [X](#) [Y](#) [Z](#)  
[0](#) [1](#) [2](#) [3](#) [4](#) [5](#) [6](#) [7](#) [8](#) [9](#)

5. In the next window, enter the password for rtpuser.

In this example, the password is rtpuserpass. You can map the user account to a group if you wish. When you have finished, click **Submit**.



## User Setup

**User Setup** ?

Real Name

Description

---

**User Setup** ?

Password Authentication:

CiscoSecure PAP (Also used for CHAP/MS-CHAP/ARAP, if the Separate field is not checked.)

Password

Confirm Password

Separate (CHAP/MS-CHAP/ARAP)

Password

Confirm Password

When a token server is used for authentication, supplying a separate CHAP password for a token card user allows CHAP authentication. This is

### Configure the Fallback Feature

When the primary RADIUS server becomes unavailable, the router will failover to the next active backup RADIUS server. The router will continue to use the secondary RADIUS server forever even if the primary server is available. Usually the primary server is high performance and the preferred server. If the secondary server is not available the local database can be used for authentication using the **aaa authentication login default group RTP local** command.

### Verify

This section provides information you can use to confirm your configuration is working properly.

Establish an IPSec tunnel between the PC and the Cisco 3640 Router.

Open a browser on the PC and point it to **http://10.17.17.17**. The Cisco 3640 Router intercepts this HTTP traffic, triggers authentication proxy, and prompts you for a username and password. The Cisco 3640 sends the username/password to the TACACS+ server for authentication. If the authentication is successful, you should be able to see the web pages on the Web server at 10.17.17.17.

Certain **show** commands are supported by the Output Interpreter Tool ( registered customers only) , which allows

you to view an analysis of **show** command output.

- **show ip access-lists** Displays the standard and extended ACLs configured on the firewall router (includes dynamic ACL entries). The dynamic ACL entries are added and removed periodically based on whether the user authenticates or not.

This output shows access-list 118 before auth-proxy was triggered:

```
3640#show ip access-lists 118
Extended IP access list 118
10 permit esp 10.1.1.0 0.0.0.255 host 10.31.1.111 (321 matches)
20 permit udp 10.1.1.0 0.0.0.255 host 10.31.1.111 eq isakmp (276 matches)
30 permit tcp host 10.14.14.3 host 10.31.1.111 (174 matches)
```

This output shows access-list 118 after auth-proxy was triggered and the user successfully authenticates:

```
3640#show ip access-lists 118
Extended IP access list 118
permit tcp host 10.20.20.26 any (7 matches)
permit udp host 10.20.20.26 any (14 matches)
permit icmp host 10.20.20.26 any
10 permit esp 10.1.1.0 0.0.0.255 host 10.31.1.111 (379 matches)
20 permit udp 10.1.1.0 0.0.0.255 host 10.31.1.111 eq isakmp (316 matches)
30 permit tcp host 10.14.14.3 host 10.31.1.111 (234 matches)
```

The first three lines of the access-list are the entries defined for this user and downloaded from the TACACS+ server.

- **show ip auth-proxy cache** Displays either the authentication proxy entries or the running authentication proxy configuration. The cache keyword to list the host IP address, the source port number, the timeout value for the authentication proxy, and the state for connections that use authentication proxy. If the authentication proxy state is ESTAB, the user authentication is a success.

```
3640#show ip auth-proxy cache
Authentication Proxy Cache
Client IP 10.20.20.26 Port 1705, timeout 5, state ESTAB
```

## Troubleshoot

For the verification and debugging commands, along with other troubleshooting information, refer to Troubleshooting Authentication Proxy.

**Note:** Before issuing **debug** commands, refer to Important Information on Debug Commands.

---

## Related Information

- [Configuring Authentication Proxy](#)
- [Authentication Proxy Configurations in Cisco IOS](#)
- [Implementing Authentication Proxy in TACACS+ and RADIUS Servers](#)
- [Cisco VPN Client Support Page](#)
- [IOS Firewall Support Page](#)
- [IPSec Support Page](#)
- [RADIUS Support Page](#)
- [RADIUS in IOS Documentation](#)
- [Requests for Comments \(RFCs\)](#)
- [TACACS/TACACS+ Support Page](#)

- **TACACS+ in IOS Documentation**
  - **Technical Support – Cisco Systems**
- 

[Contacts & Feedback](#) | [Help](#) | [Site Map](#)

© 2008 – 2009 Cisco Systems, Inc. All rights reserved. [Terms & Conditions](#) | [Privacy Statement](#) | [Cookie Policy](#) | [Trademarks of Cisco Systems, Inc.](#)

---

Updated: Jan 14, 2008

Document ID: 14294

---